

V&V Reference Report

L2 ASCDS Version : 8.4.5

Observation 10639 - L2 Version 3
Chandra X-Ray Center

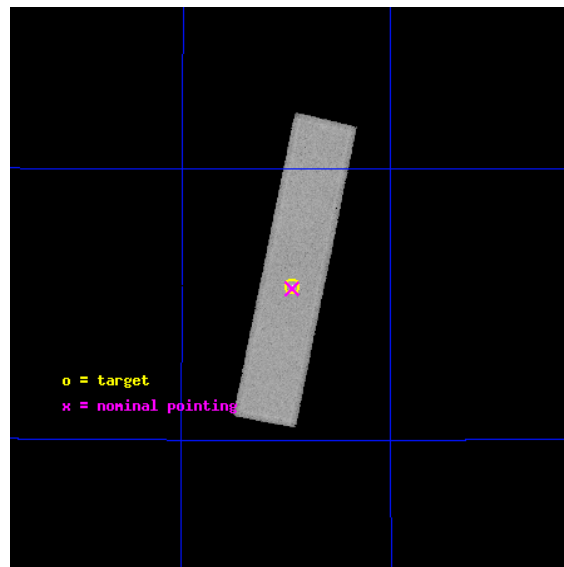
L2 Processing Date : Aug 13 2012

Contents

1	Front	2
2	OBI	3
2.1	OBI	3
2.1.1	Images	3
2.1.2	Parameters	4
2.1.3	Events	4
2.2	Compared Parameters	5
2.3	Aspect	6
2.4	Star Slots	9
2.4.1	Slot 3	9
2.4.2	Slot 4	10
2.4.3	Slot 5	11
2.4.4	Slot 6	12
2.4.5	Slot 7	13
2.5	FID Slots	14
2.5.1	Slot 0	14
2.5.2	Slot 1	15
2.5.3	Slot 2	16
A	Summary	17
A.1	Status	17
A.2	Comments	17

1 Front

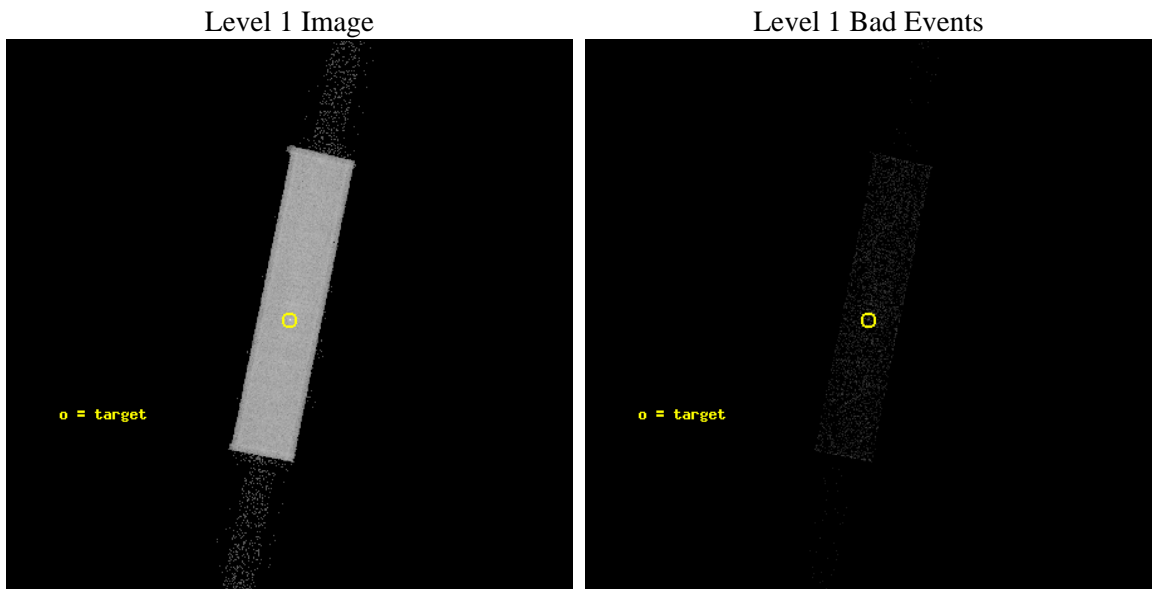
seq_num	290875	Sequence number
obs_id	10639	Observation id
title	AO-10 Measurements of the optical/UV Transmission of the HRC Filters.	Proposal title
observer	Dr. CXC Calibration	Principal investigator
object	Vega	Source name
ra_targ	279.235	Observer's specified target RA [deg]
dec_targ	38.783778	Observer's specified target Dec [deg]
ra_nom	279.23649949498	Nominal RA [deg]
dec_nom	38.779096310948	Nominal Dec [deg]
roll_nom	281.59844002109	Nominal Roll [deg]
revision	3	Processing version of data
ontime	2159.931358695	[s]
livetime	2138.2509606671	Ontime multiplied by DTCOR
l2events	152561	Number of level 2 events



2 OBI

2.1 OBI

2.1.1 Images



2.1.2 Parameters

obi_num	0	Obi number	sched_exp_time	2000.000000	[s] Scheduled observation exposure time
ascdsver	8.4.5	Processing system revision	ontime	2159.931358695	[s]
caldsver	4.5.1.1	 	l1events	195408	Number of level 1 events
date	2012-08-13T17:43:23	Date and time of file creation			
revision	3	Processing version of data			

2.1.3 Events

Level 1 Events

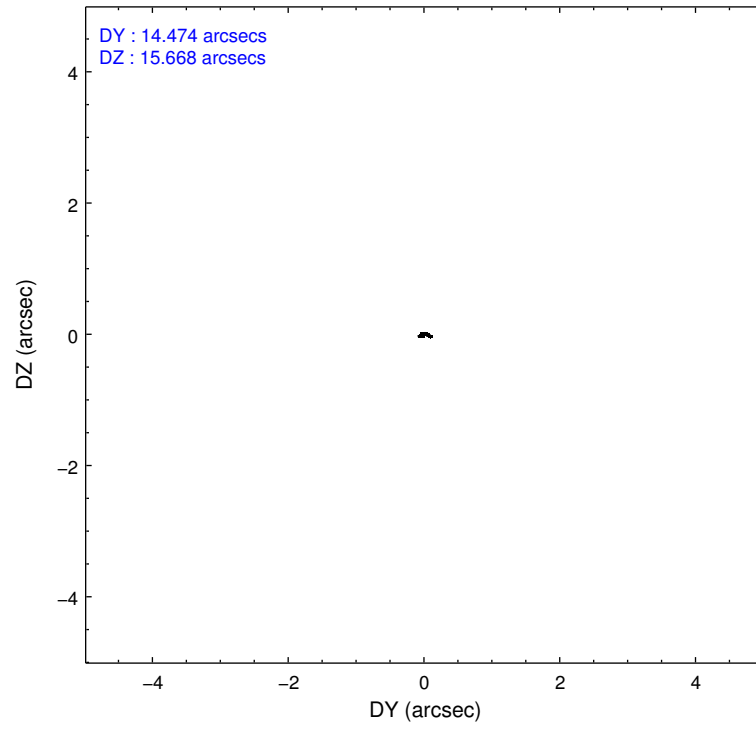
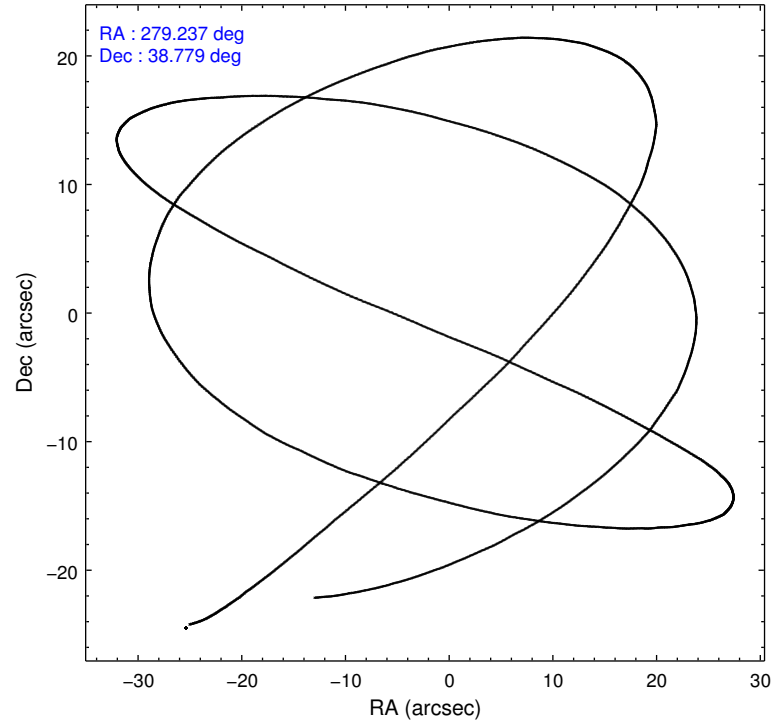
	segment 1	segment 2	segment 3
level 1 events	1120	193175	1113
rejected events	1120	12552	1113
rejected %	100%	6%	100%

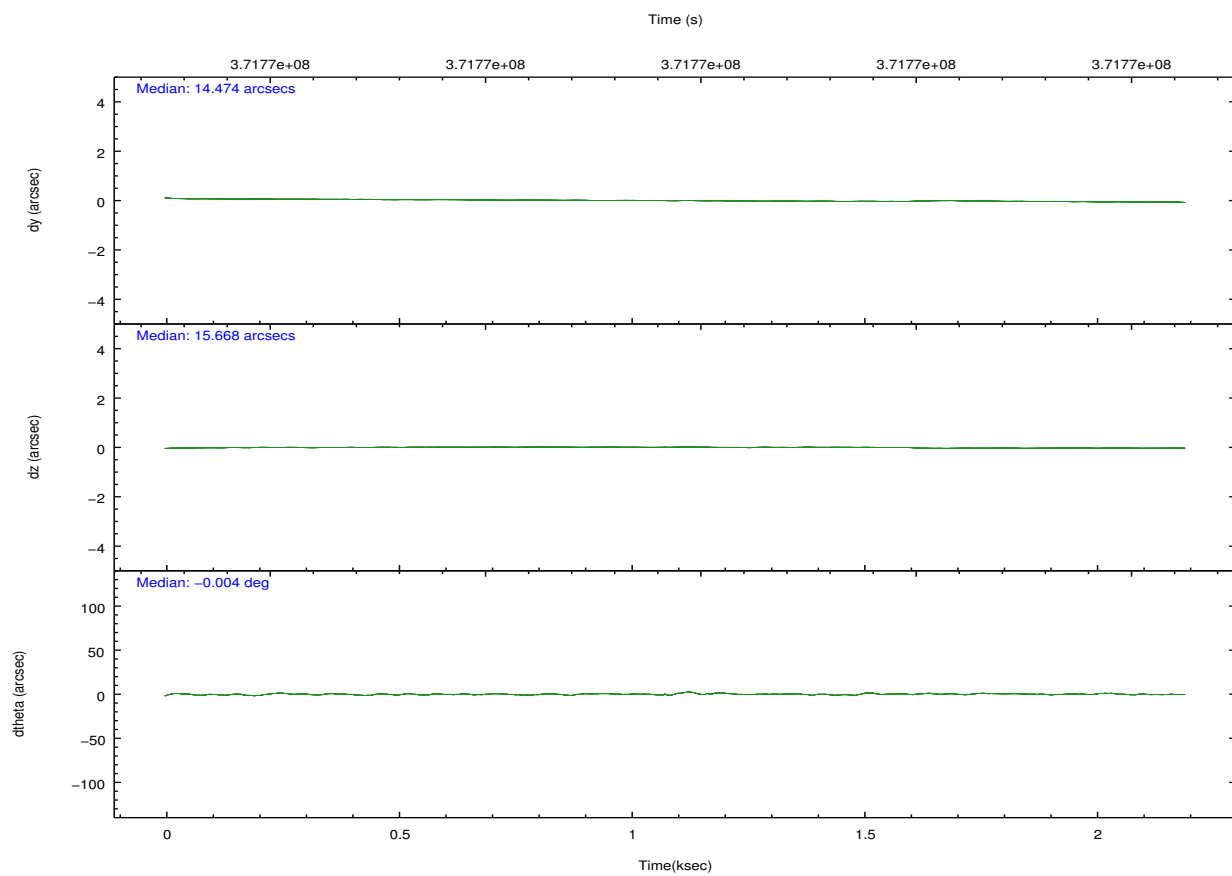
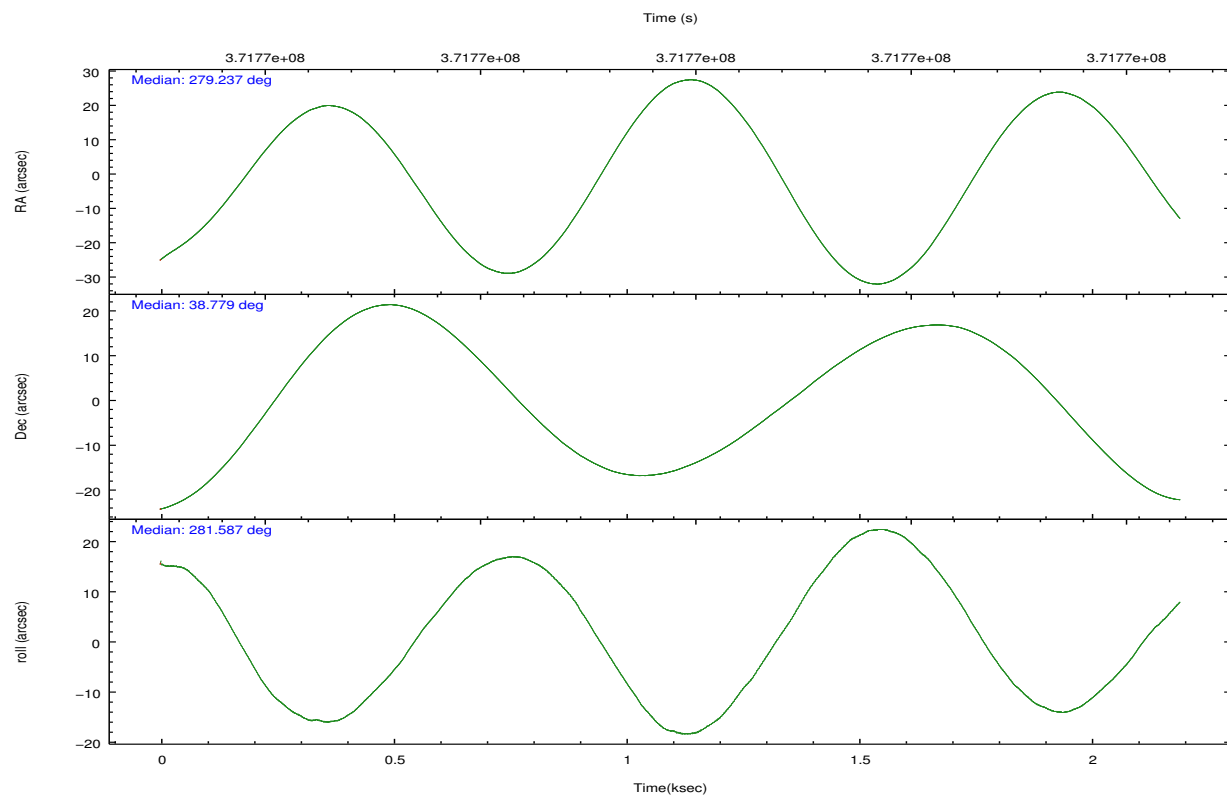
2.2 Compared Parameters

Parameter	Planned	Actual
Instrument	HRC	HRC
Detector	HRC-S	HRC-S
Grating	NONE	NONE
Data mode	OBSERVING	OBSERVING
Observation mode	POINTING	POINTING
[deg] Pointing RA	279.210350	279.2364994949834
[deg] Pointing Dec	38.799585	38.77909631094838
[deg] Pointing Roll	281.547476	281.5984400210939
[s] Window start time (MET)	368150466.184000	368150466.184000
[s] Window stop time (MET)	375926466.184000	375926466.184000
[mm] SIM focus pos	-1.533336	-1.526339935833849
[mm] SIM defocus	7.710433287538843e-07	0.006996703570447904
[mm] SIM translation stage pos	250.455976	250.466033080201
[mm] SIM translation stage offset	0	-0.01005468664627074
[s] Observation start time (MET)	371772539.184000	371772160.31275
Observation start date	2009-10-12T22:07:53	2009-10-12T22:02:40
[s] Observation end time (MET)	371774539.184000	371774673.61287
Observation end date	2009-10-12T22:41:13	2009-10-12T22:44:33

Parameter	Planned	Actual
Obspar format version number	7	7
Obspar file type	PREDICTED	ACTUAL
Obspar update status	NONE	UPDATED

2.3 Aspect



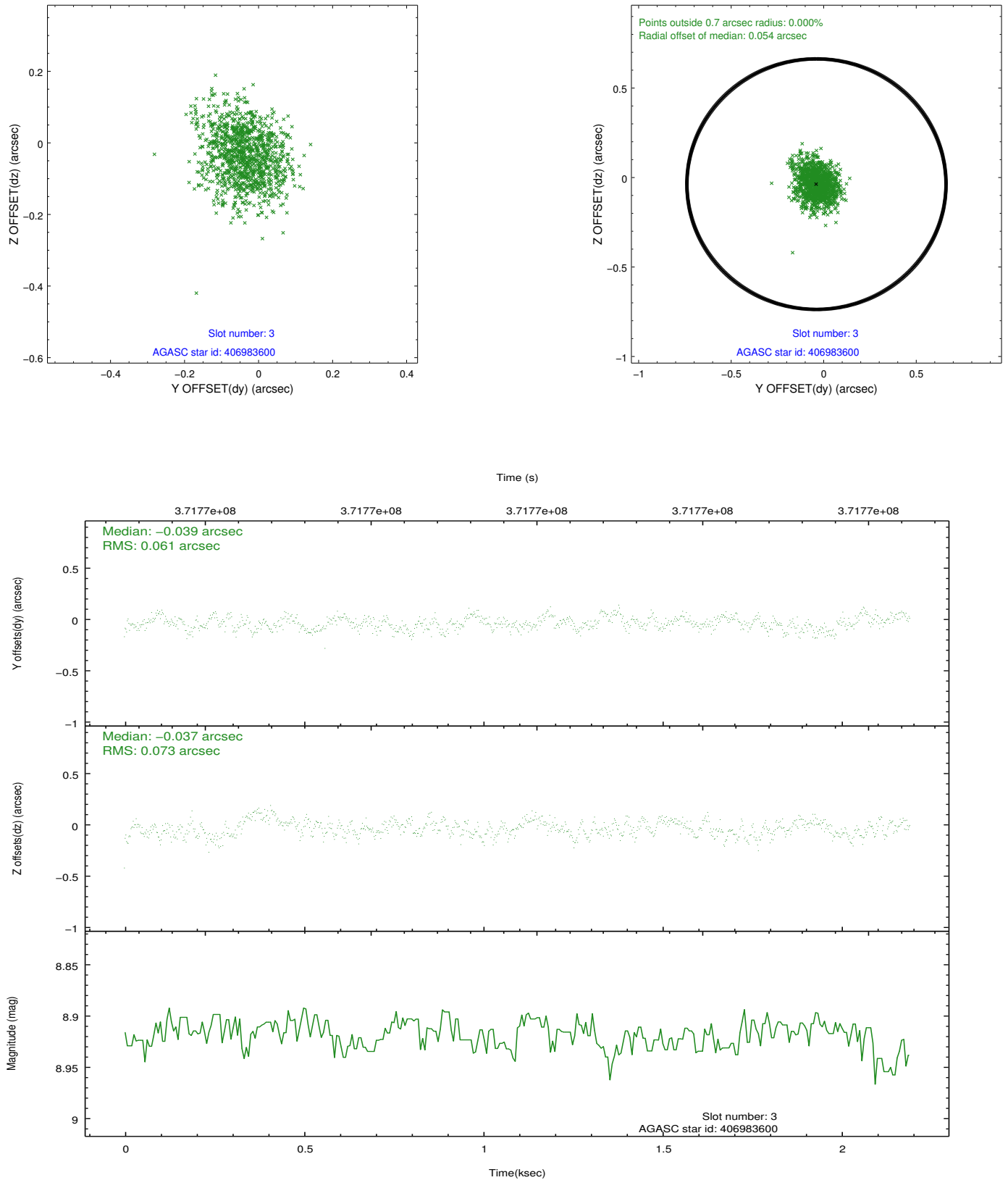


Slot Statistics

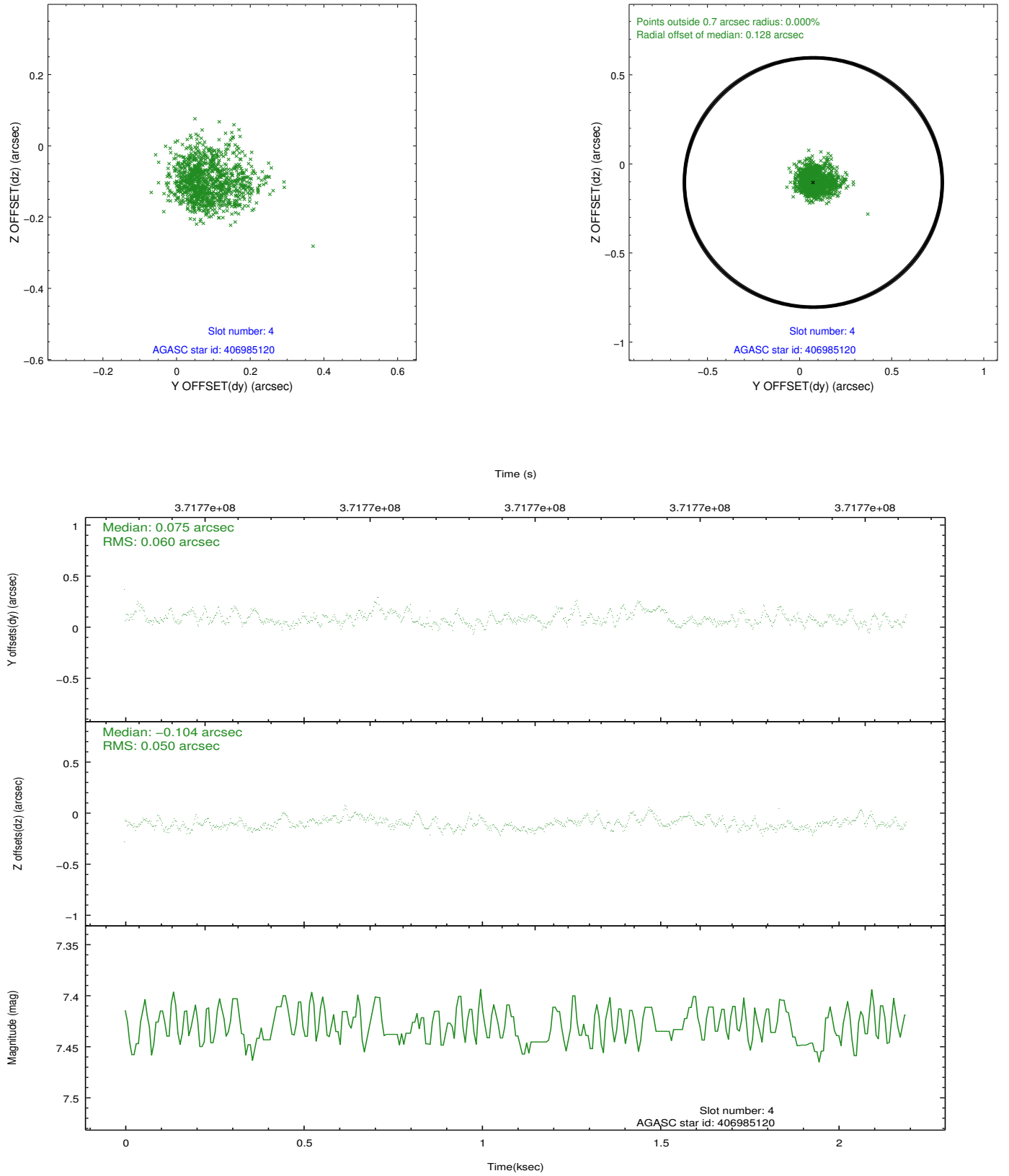
slot	status	id	mag	n_pts	med_dy	med_dz	dr1	dr2	ra	dec	mean_y	mean_z
0	FID	HRC-S-1	7.00	535	0.057	-0.195	0.007	0.012	0.000000	0.000000	-1168.87	-464.57
1	FID	HRC-S-2	6.99	535	0.229	-0.111	0.005	0.010	0.000000	0.000000	1228.77	-457.98
2	FID	HRC-S-3	7.01	535	0.104	0.005	0.007	0.014	0.000000	0.000000	-1169.25	564.30
3	GUIDE	406983600	8.92	1069	-0.039	-0.037	0.100	0.163	279.940957	39.020708	-378.24	2163.01
4	GUIDE	406985120	7.43	1069	0.075	-0.104	0.080	0.136	278.839732	38.894839	-545.88	-947.16
5	GUIDE	406987272	6.94	1070	-0.087	0.147	0.062	0.102	278.536588	38.437504	889.37	-2122.37
6	GUIDE	407521232	8.63	1070	0.012	0.121	0.091	0.150	279.628883	39.431715	-1998.63	1593.46
7	GUIDE	406979352	9.25	1069	0.029	-0.144	0.115	0.188	279.968297	39.230258	-1105.20	2383.41

2.4 Star Slots

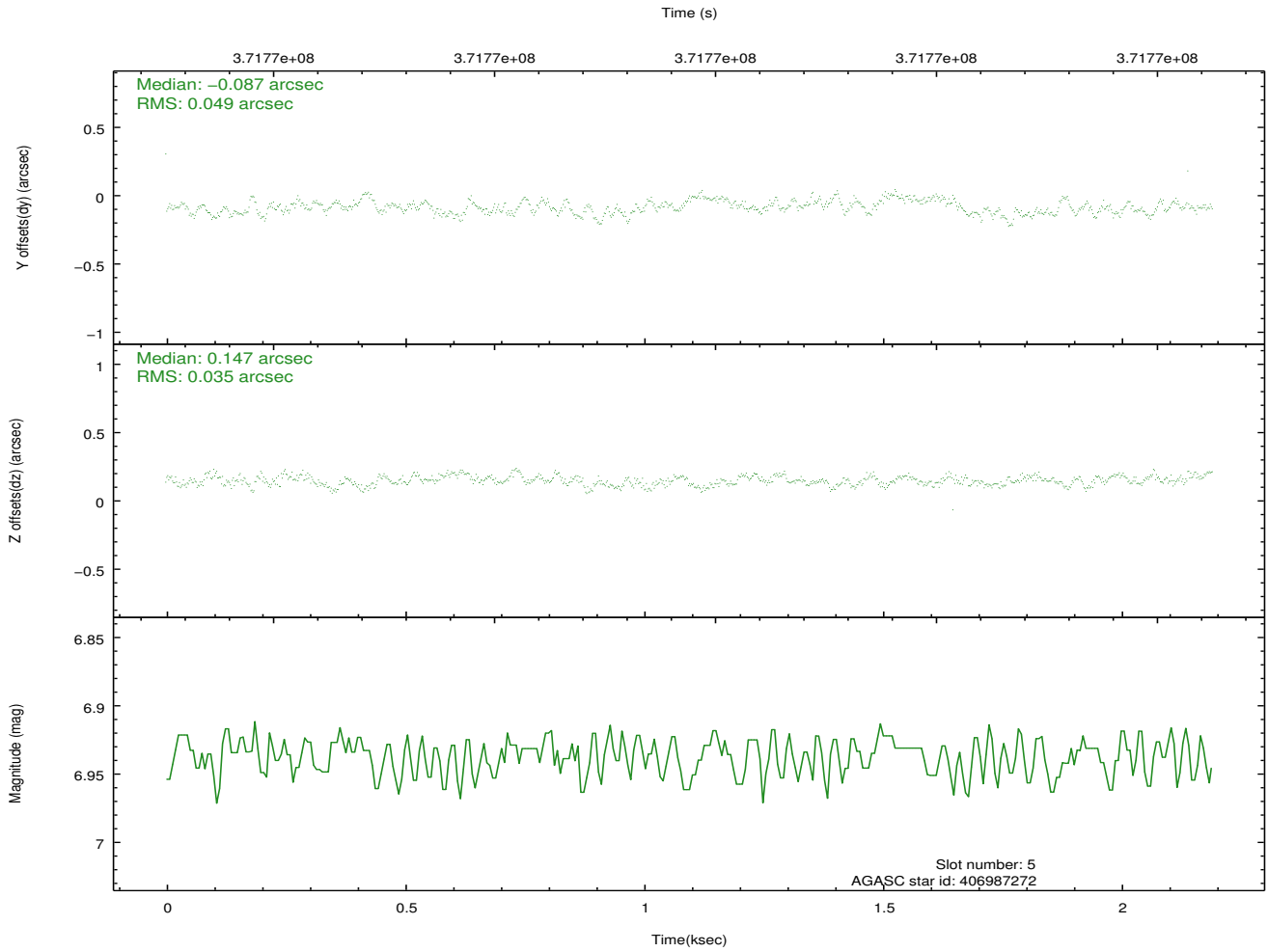
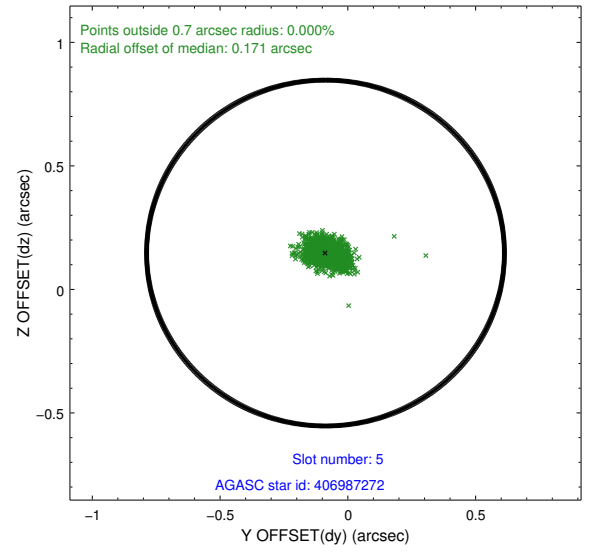
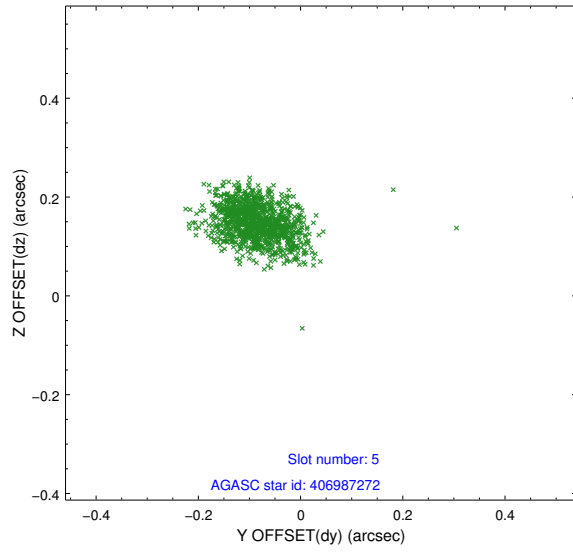
2.4.1 Slot 3



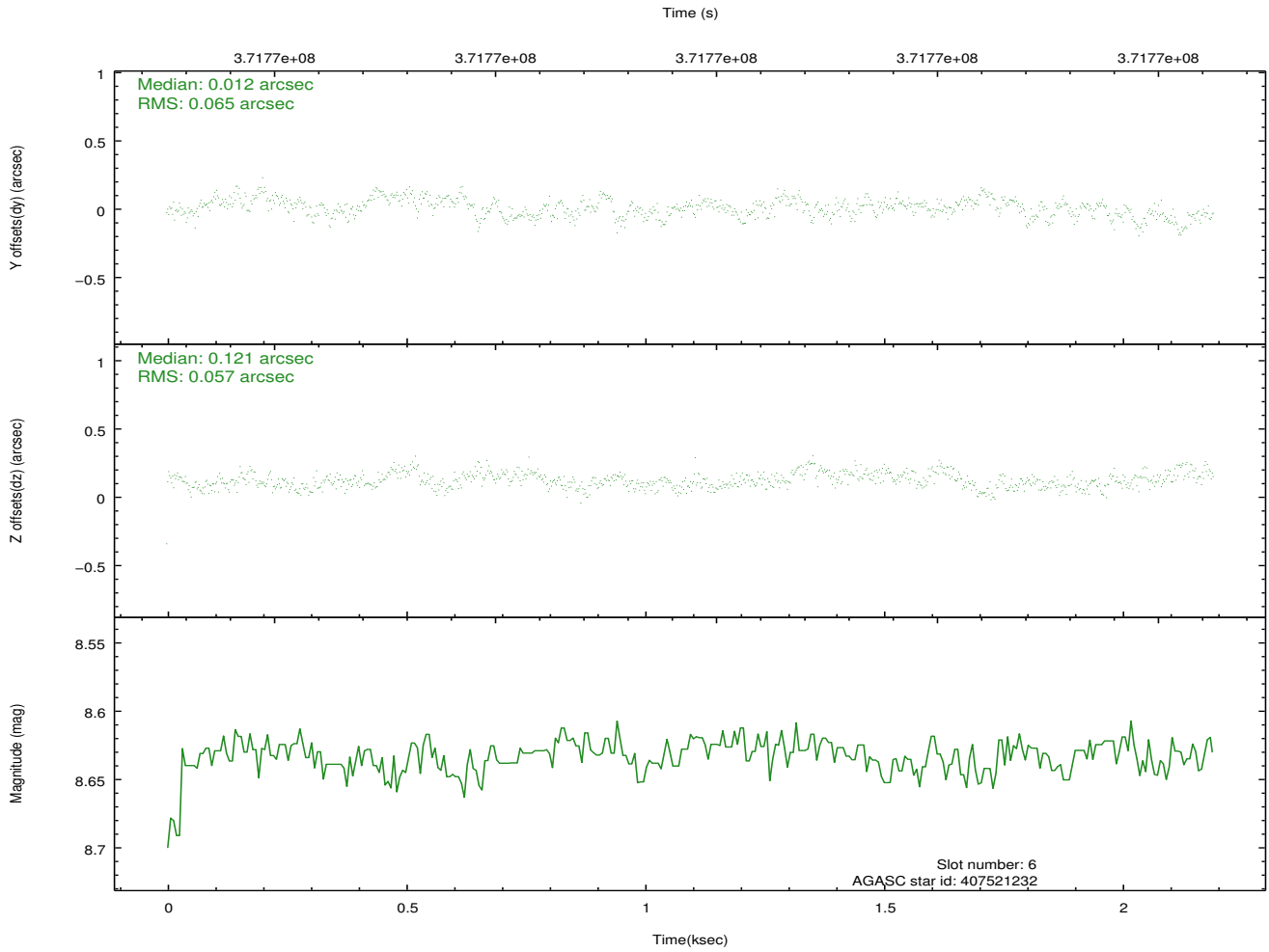
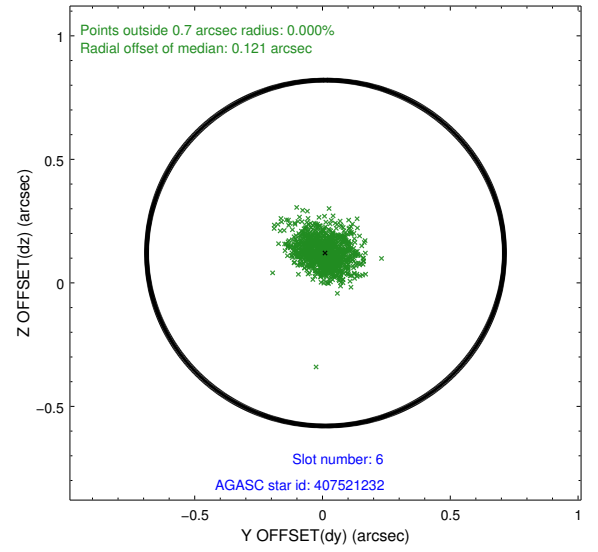
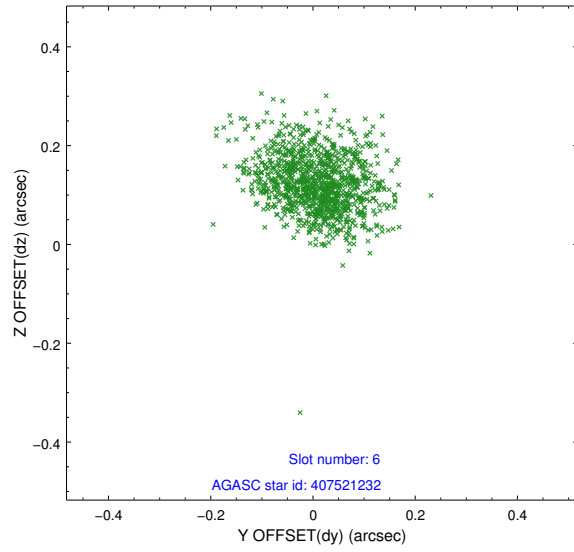
2.4.2 Slot 4



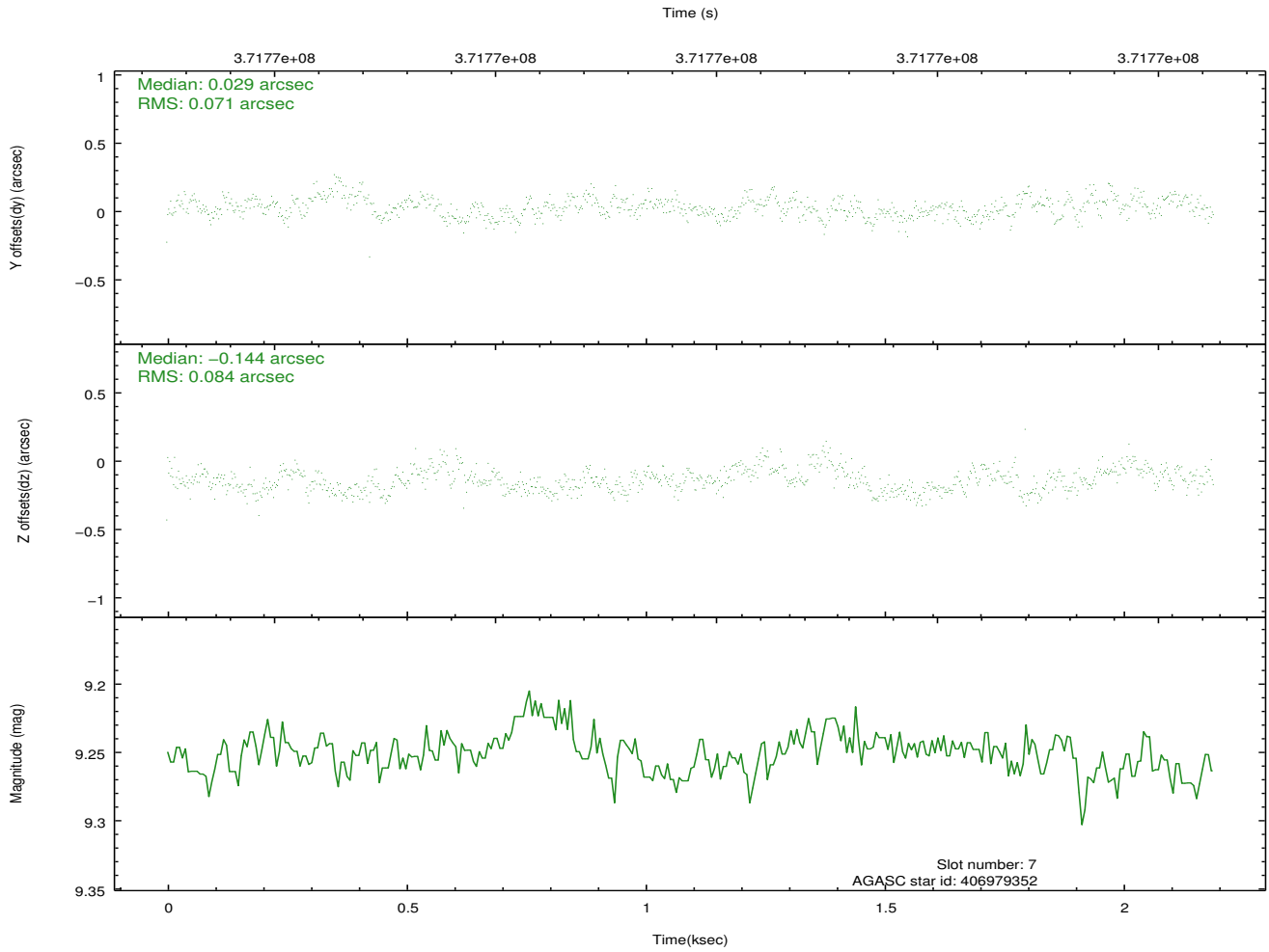
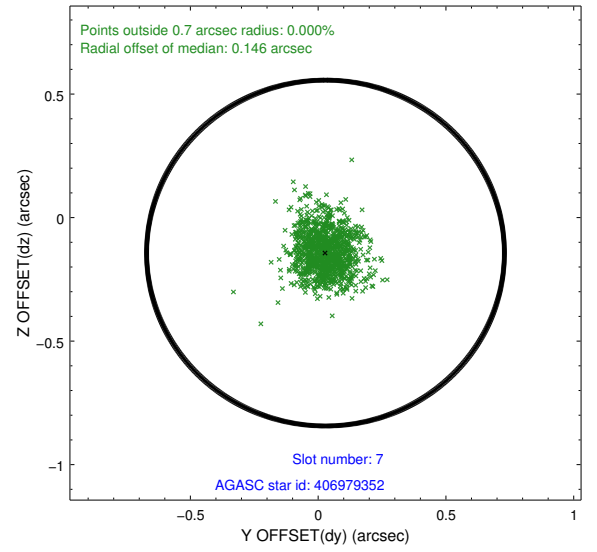
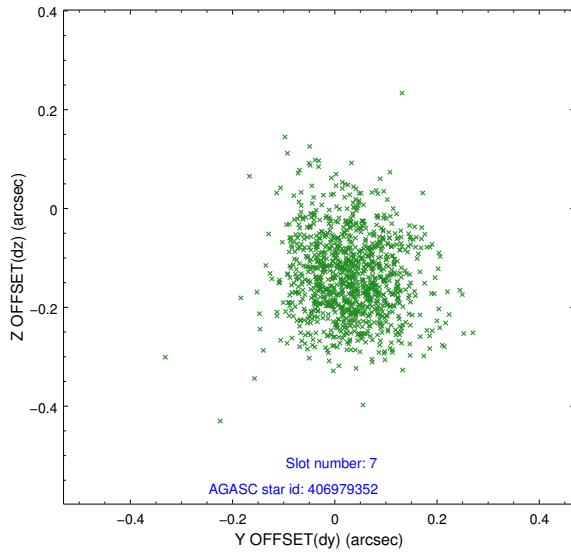
2.4.3 Slot 5



2.4.4 Slot 6

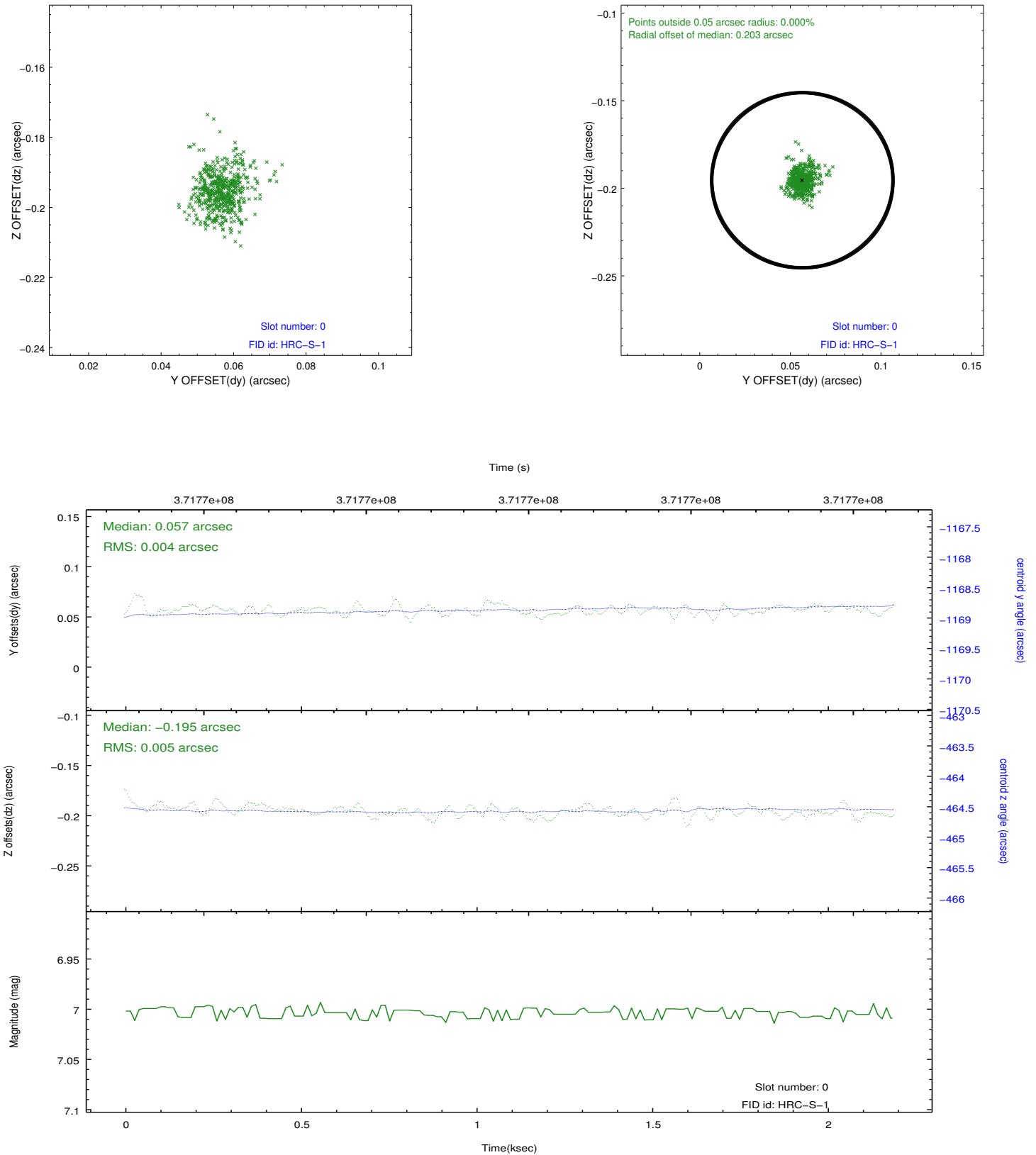


2.4.5 Slot 7

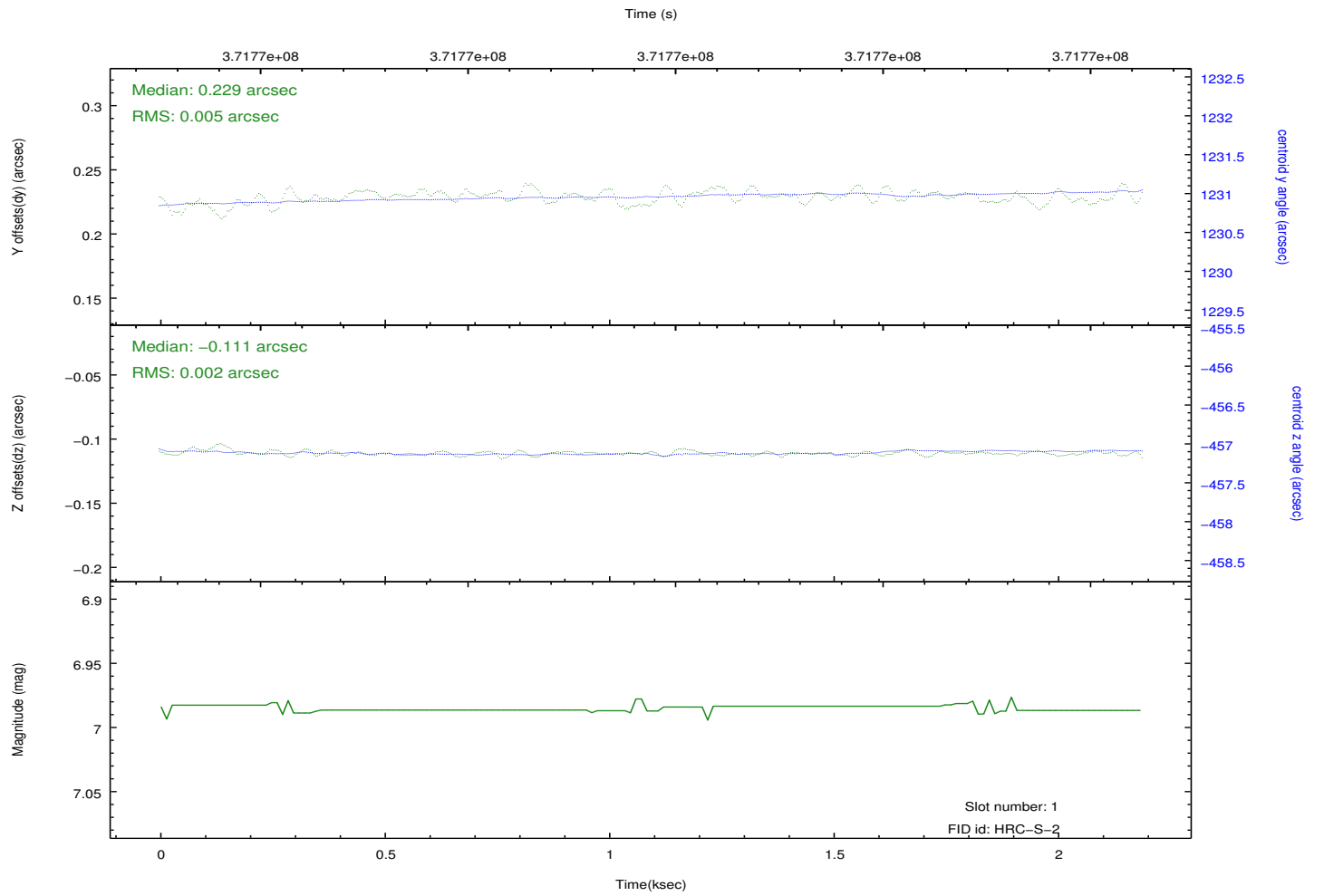
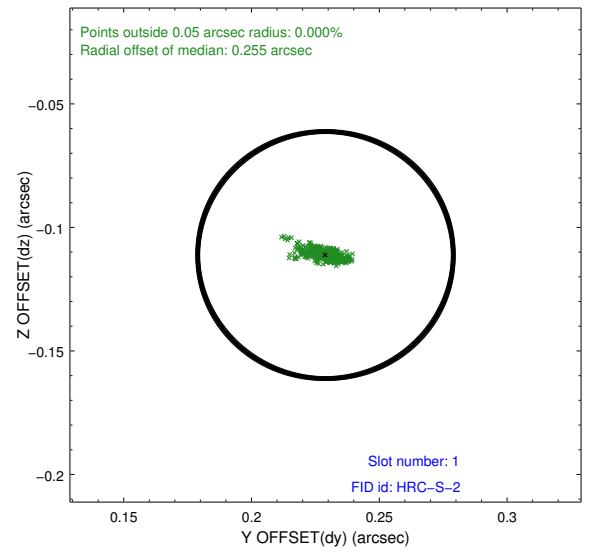
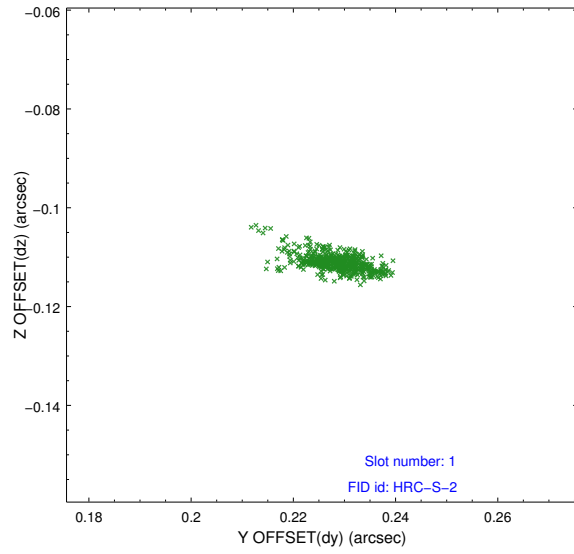


2.5 FID Slots

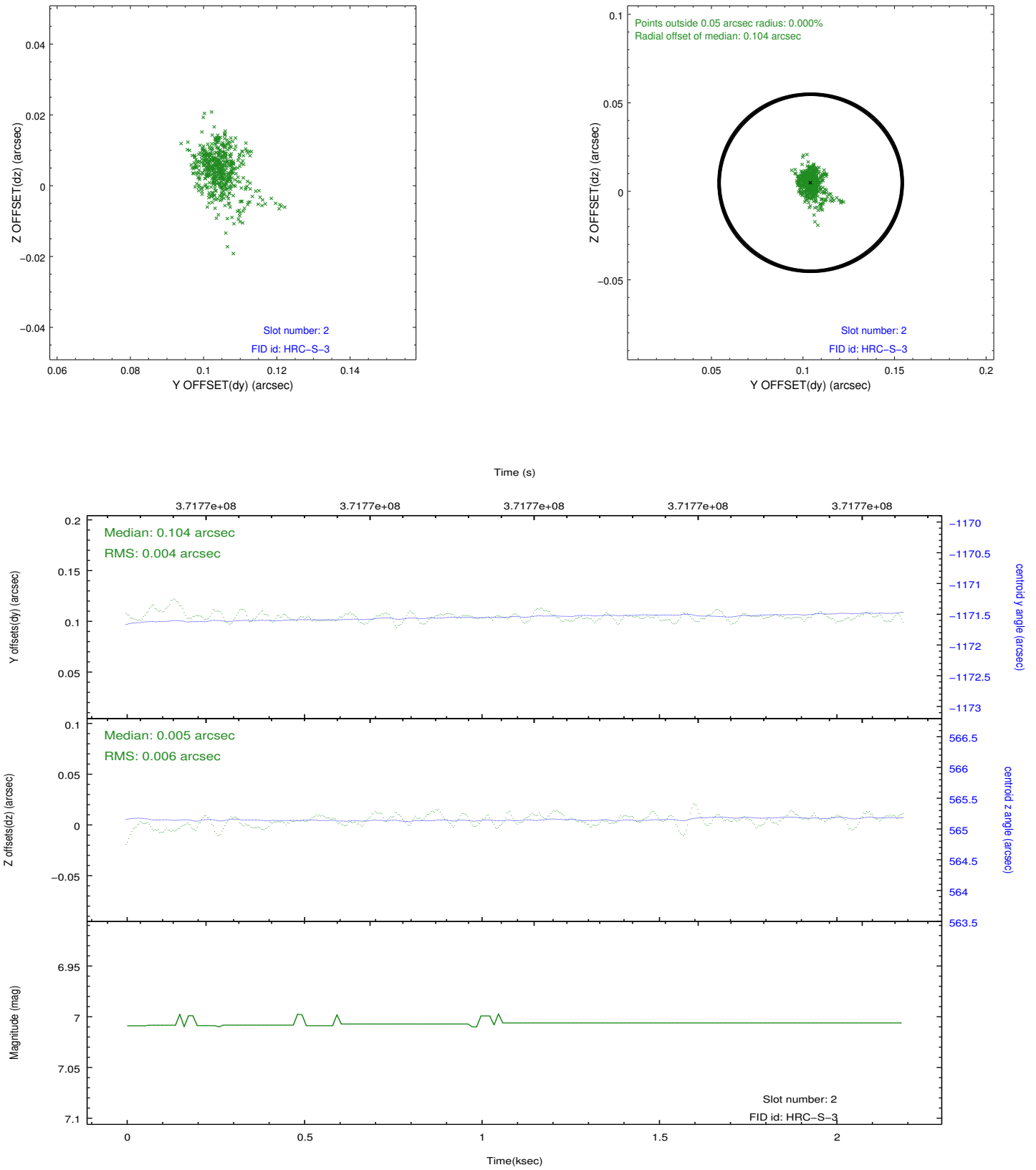
2.5.1 Slot 0



2.5.2 Slot 1



2.5.3 Slot 2



A Summary

A.1 Status

V&V Scientist	Jen Lauer
V&V Date (YYYY-MM-DD)	2012.08.22
V&V Edition	1
V&V Disposition and Status	OK
V&V Charge Time	2.1599313587546

A.2 Comments

Window preference met.