

V&V Reference Report

L2 ASCDS Version : 8.4.5

Observation 10119 - L2 Version 2
Chandra X-Ray Center

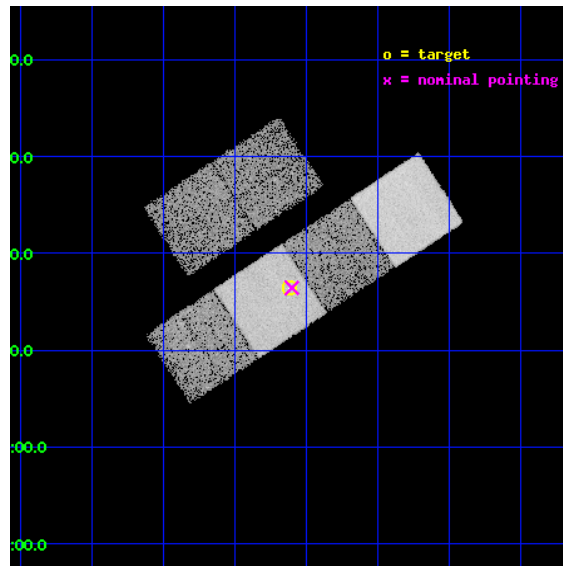
L2 Processing Date : Jun 6 2012

Contents

1	Front	2
2	OBI	3
2.1	OBI	3
2.1.1	Images	3
2.1.2	Bias	3
2.1.3	Parameters	4
2.1.4	Events	4
2.2	Compared Parameters	5
2.3	Aspect	6
2.4	Star Slots	9
2.4.1	Slot 3	9
2.4.2	Slot 4	10
2.4.3	Slot 5	11
2.4.4	Slot 6	12
2.4.5	Slot 7	13
2.5	FID Slots	14
2.5.1	Slot 0	14
2.5.2	Slot 1	15
2.5.3	Slot 2	16
A	Summary	17
A.1	Status	17
A.2	Comments	17

1 Front

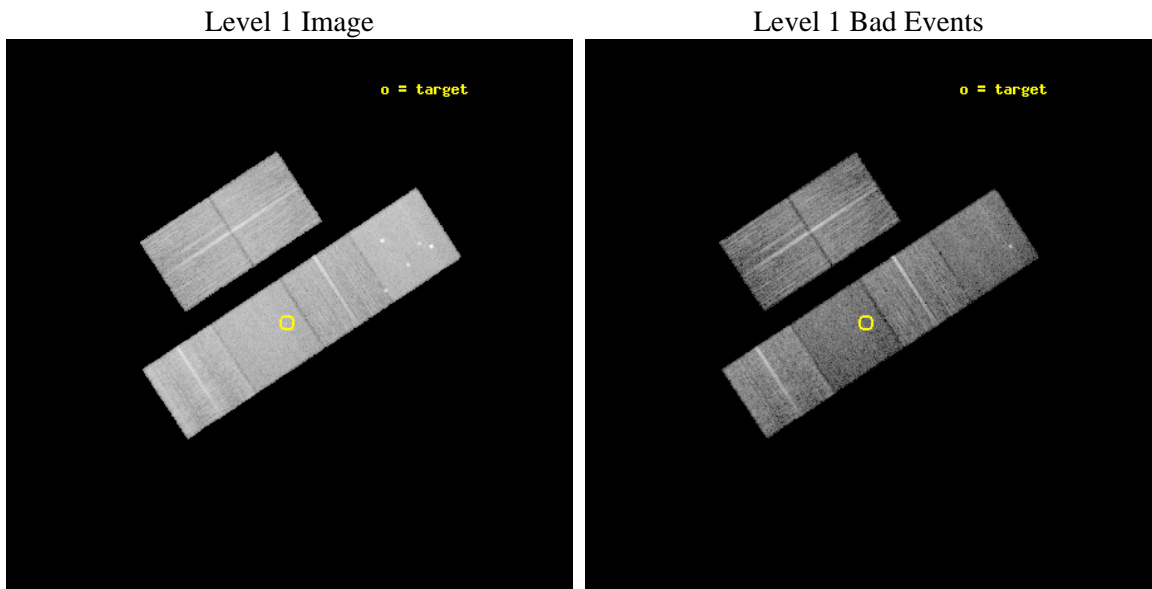
seq_num	501046	Sequence number
obs_id	10119	Observation id
title	Chandra Observations of New X-ray Supernovae	Proposal title
observer	Prof. David Pooley	Principal investigator
object	CSS080928	Source name
dtcycle	0	
cycle	P	events from which exps? Prim/Second/Both
ra_targ	242.155125	Observer's specified target RA [deg]
dec_targ	4.274083	Observer's specified target Dec [deg]
ra_nom	242.15028490922	Nominal RA [deg]
dec_nom	4.2742016230815	Nominal Dec [deg]
roll_nom	146.67675703781	Nominal Roll [deg]
revision	2	Processing version of data
ontime	10038.399962664	Sum of GTIs [s]
livetime	9911.2876979376	Livetime [s]
ontime2	10038.399962664	Sum of GTIs [s]
ontime3	10038.399962664	Sum of GTIs [s]
ontime5	10038.399962664	Sum of GTIs [s]
ontime6	10038.399962664	Sum of GTIs [s]
ontime7	10038.399962664	Sum of GTIs [s]
ontime8	10038.399962664	Sum of GTIs [s]
l2events	135291	Number of level 2 events



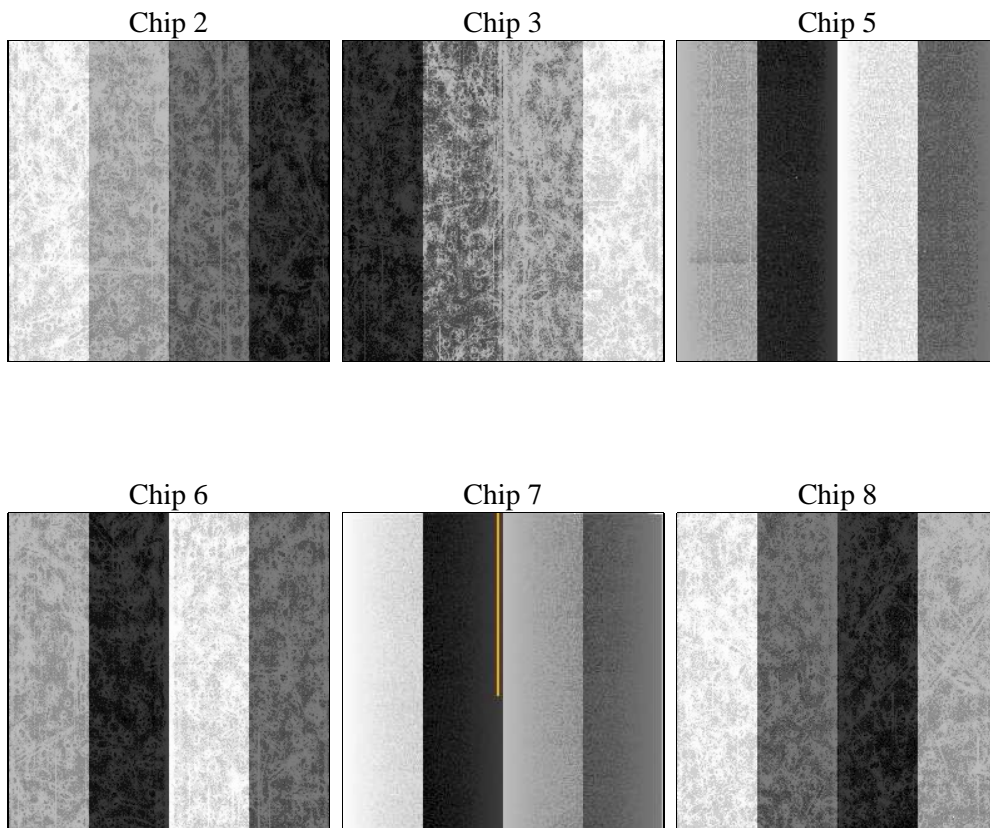
2 OBI

2.1 OBI

2.1.1 Images



2.1.2 Bias



2.1.3 Parameters

obi_num	0	Obi number	sched_exp_time	10000.000000	[s] Scheduled observation exposure time
ascdsver	8.4.5	Processing system revision	ontime	10038.399962664	Sum of GTIs [s]
caldsver	4.4.10	 	ontime2	10038.399962664	Sum of GTIs [s]
date	2012-06-06T23:42:24	Date and time of file creation	ontime3	10038.399962664	Sum of GTIs [s]
revision	2	Processing version of data	ontime5	10038.399962664	Sum of GTIs [s]
			ontime6	10038.399962664	Sum of GTIs [s]
			ontime7	10038.399962664	Sum of GTIs [s]
			ontime8	10038.399962664	Sum of GTIs [s]
			l1events	609146	Number of level 1 events

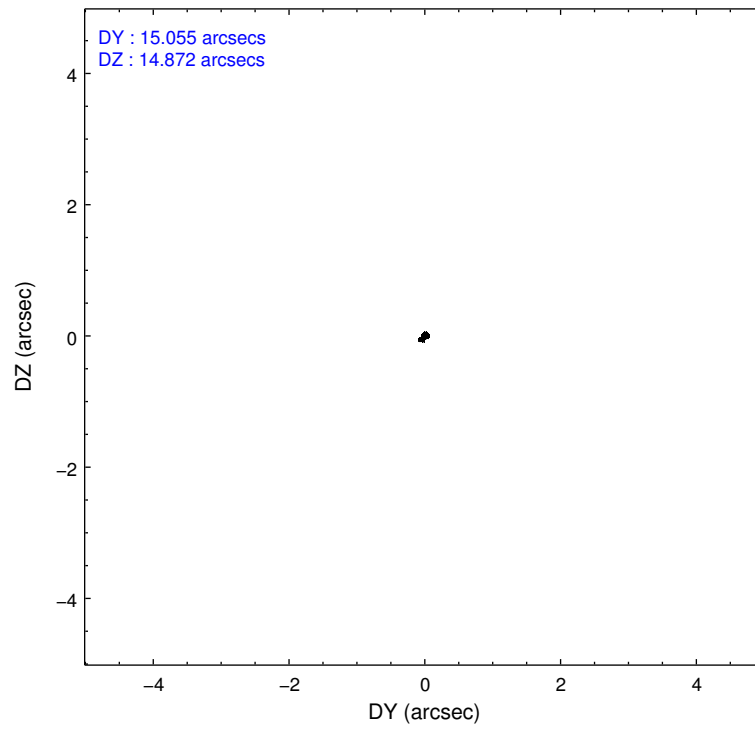
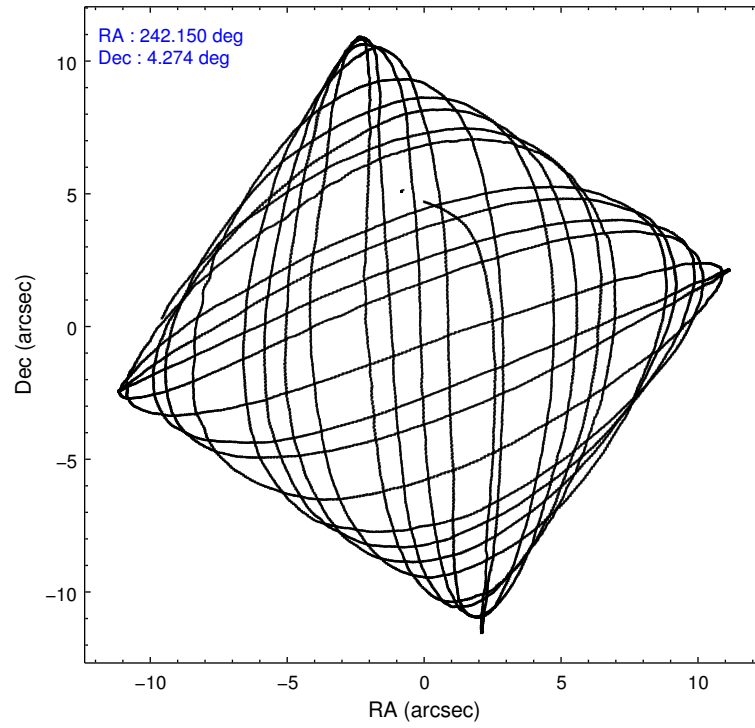
2.1.4 Events

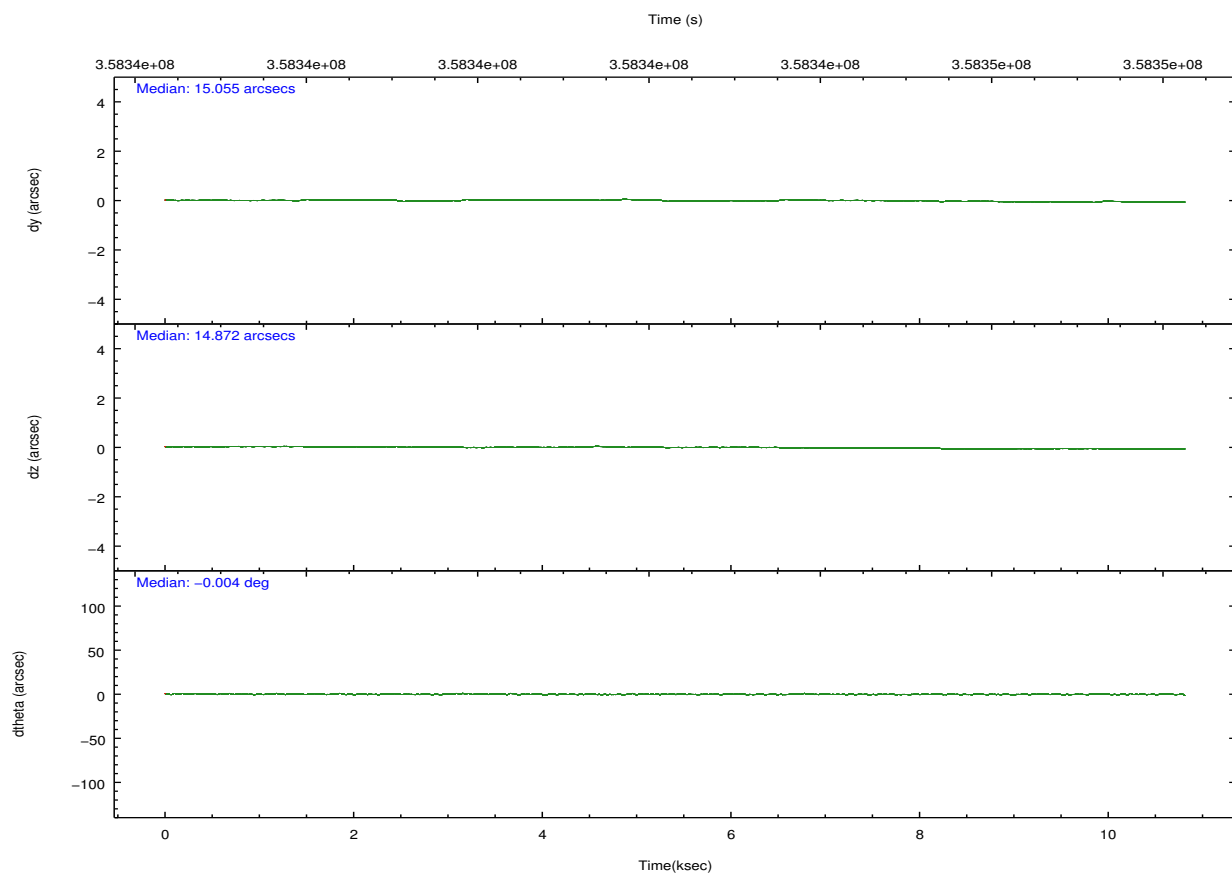
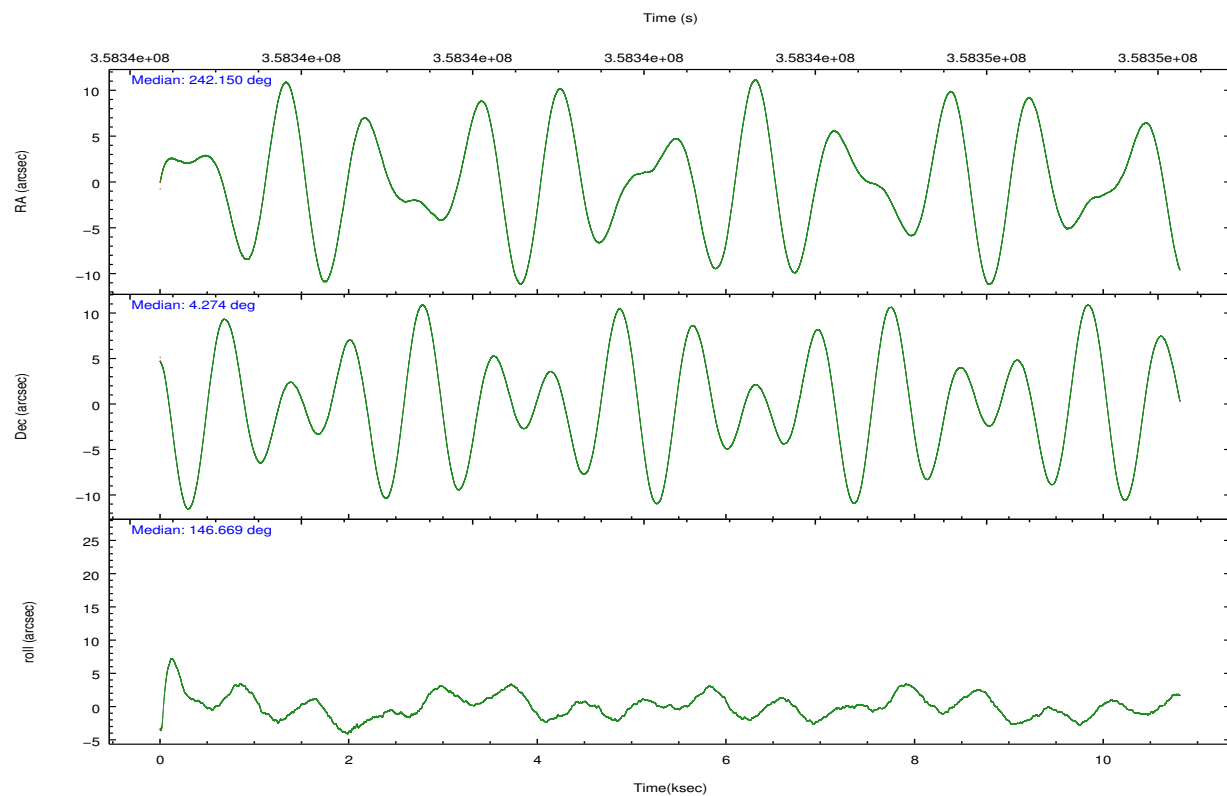
	ccd 2	ccd 3	ccd 5	ccd 6	ccd 7	ccd 8		ccd 2	ccd 3	ccd 5	ccd 6	ccd 7	ccd 8
level 1 events	95326	85635	126133	88258	99690	114104	grade 0 events	3455	3142	7386	3518	4425	8210
rejected events	85995	77156	62624	78739	54178	85836		3%	3%	5%	3%	4%	7%
rejected %	90%	90%	49%	89%	54%	75%	grade 1 events	66	49	285	60	143	95
								0%	0%	0%	0%	0%	0%
							grade 2 events	2266	1889	19178	2018	9168	6854
								2%	2%	15%	2%	9%	6%
							grade 3 events	911	938	2446	983	4066	2881
								0%	1%	1%	1%	4%	2%
							grade 4 events	1007	893	2407	964	4188	2702
								1%	1%	1%	1%	4%	2%
							grade 5 events	3110	3488	9507	3724	10313	5307
								3%	4%	7%	4%	10%	4%
							grade 6 events	1697	1619	32111	2041	23675	7641
								1%	1%	25%	2%	23%	6%
							grade 7 events	82814	73617	52813	74950	43712	80414
								86%	85%	41%	84%	43%	70%

2.2 Compared Parameters

Parameter	Planned	Actual	Parameter	Planned	Actual
Instrument	ACIS	ACIS	Obspar format version number	7	7
Detector	ACIS-235678	ACIS-235678	Obspar file type	PREDICTED	ACTUAL
Grating	NONE	NONE	Obspar update status	NONE	UPDATED
Data mode	VFAINT	VFAINT	CCD I0 on	N	N
Observation mode	POINTING	POINTING	CCD I1 on	N	N
[deg] Pointing RA	242.177653	242.1502849092155	CCD I2 on	O2	Y
[deg] Pointing Dec	4.273009	4.274201623081495	CCD I3 on	O1	Y
[deg] Pointing Roll	146.518092	146.6767570378143	CCD S0 on	N	N
[mm] SIM focus pos	-0.684267	-0.6828225247311905	CCD S1 on	Y	Y
[mm] SIM defocus	0	0.001444936568705701	CCD S2 on	Y	Y
[mm] SIM translation stage pos	-190.132523	-190.1425803651734	CCD S3 on	Y	Y
[mm] SIM translation stage offset	0	0.01005778216563158	CCD S4 on	Y	Y
[s] Observation start time (MET)	358337711.184000	358336390.96536	CCD S5 on	N	N
Observation start date	2009-05-10T10:14:05	2009-05-10T09:53:10	Number of optional ACIS chips dropped	0	0
[s] Observation end time (MET)	358347711.184000	358348694.04097	On-chip summing requested	N	N
Observation end date	2009-05-10T13:00:45	2009-05-10T13:18:14	Subarray requested	NONE	NONE
Read mode	TIMED	TIMED	Alternating exposures requested	N	N
			[s] Primary exposure time	0.000000	3.2

2.3 Aspect



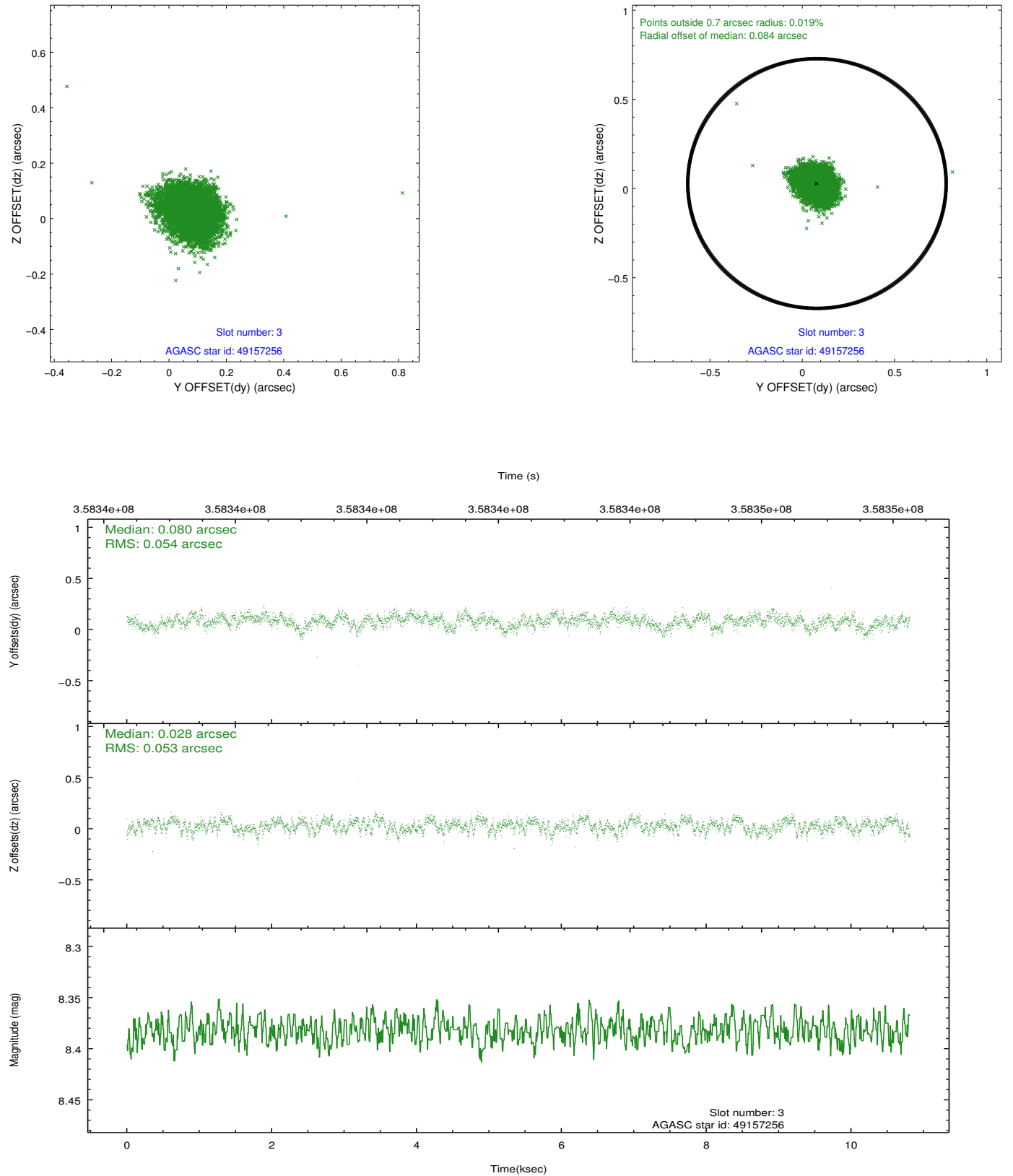


Slot Statistics

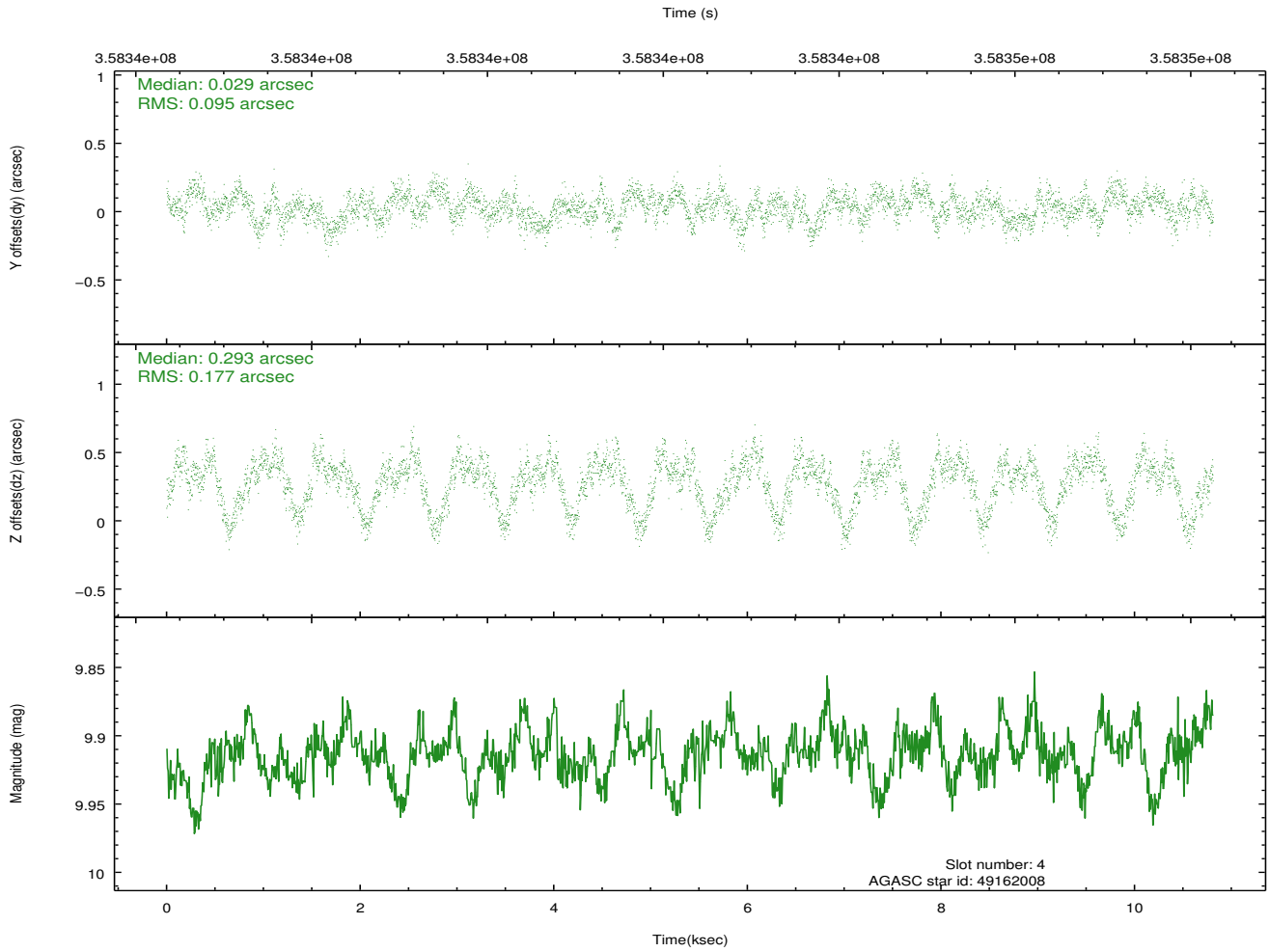
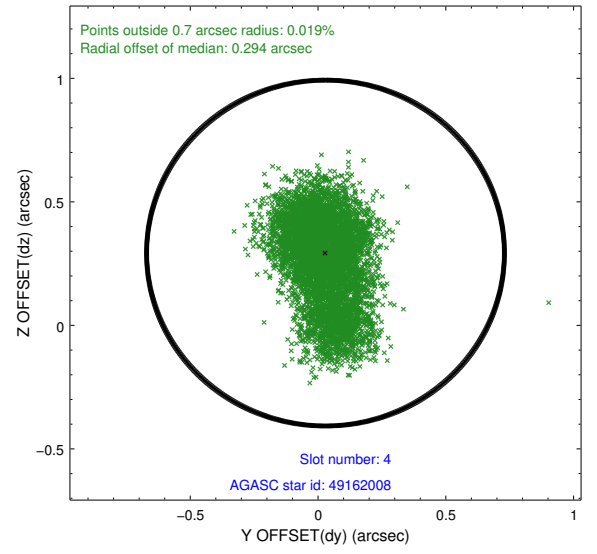
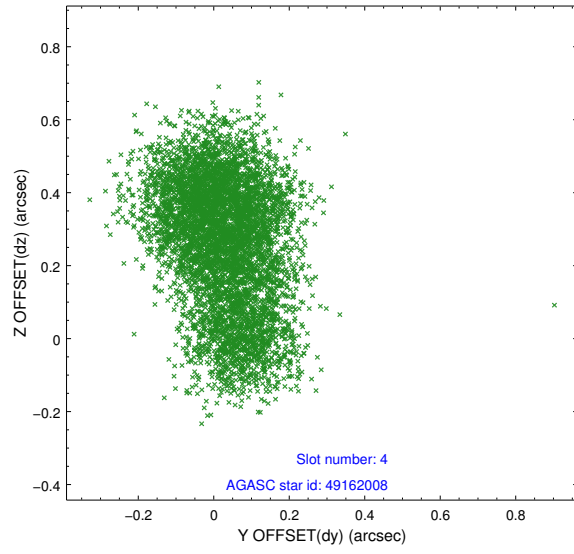
slot	status	id	mag	n_pts	med_dy	med_dz	dr1	dr2	ra	dec	mean_y	mean_z
0	FID	ACIS-S-2	6.94	2638	-0.096	-0.029	0.006	0.010	0.000000	0.000000	-768.10	-1736.22
1	FID	ACIS-S-4	7.02	2638	0.203	0.054	0.005	0.010	0.000000	0.000000	2145.24	171.87
2	FID	ACIS-S-5	7.05	2637	-0.139	-0.016	0.006	0.010	0.000000	0.000000	-1820.39	165.99
3	GUIDE	49157256	8.38	5273	0.080	0.028	0.080	0.127	242.160322	4.815394	1128.96	-1592.95
4	GUIDE	49162008	9.91	5265	0.029	0.293	0.210	0.363	242.815112	4.426724	-1601.64	-1724.37
5	GUIDE	49162896	9.40	5273	0.067	-0.039	0.100	0.160	242.414916	3.819517	-1611.63	891.37
6	GUIDE	49025408	9.05	5269	-0.088	-0.118	0.097	0.156	241.605615	4.246380	1660.24	1212.88
7	GUIDE	49163448	8.30	5273	-0.086	-0.141	0.073	0.120	242.314940	3.752178	-1445.47	1291.97

2.4 Star Slots

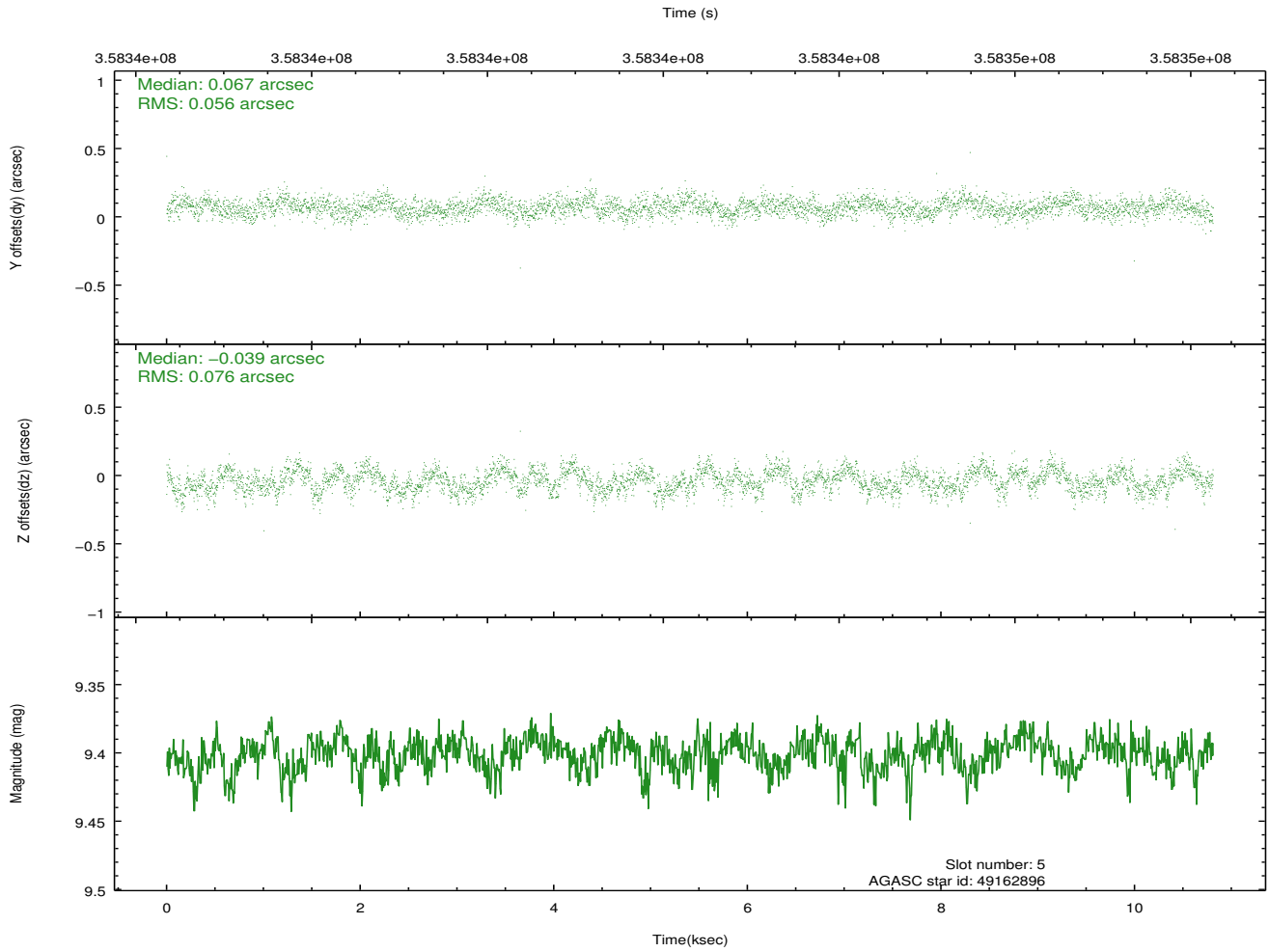
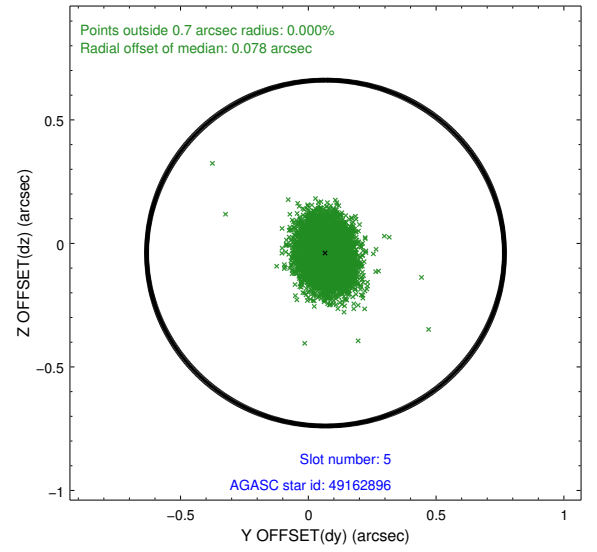
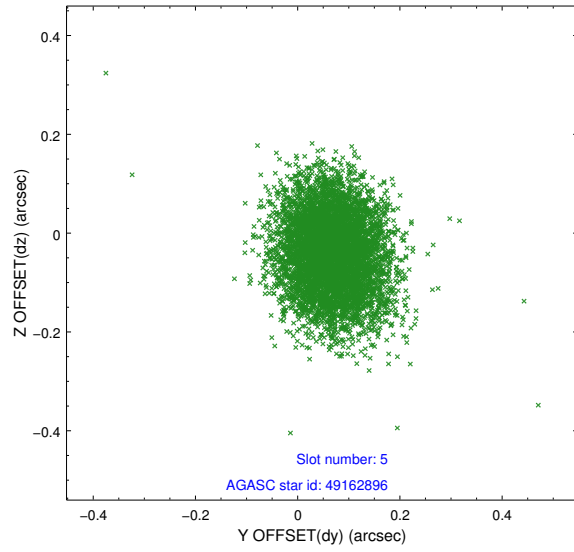
2.4.1 Slot 3



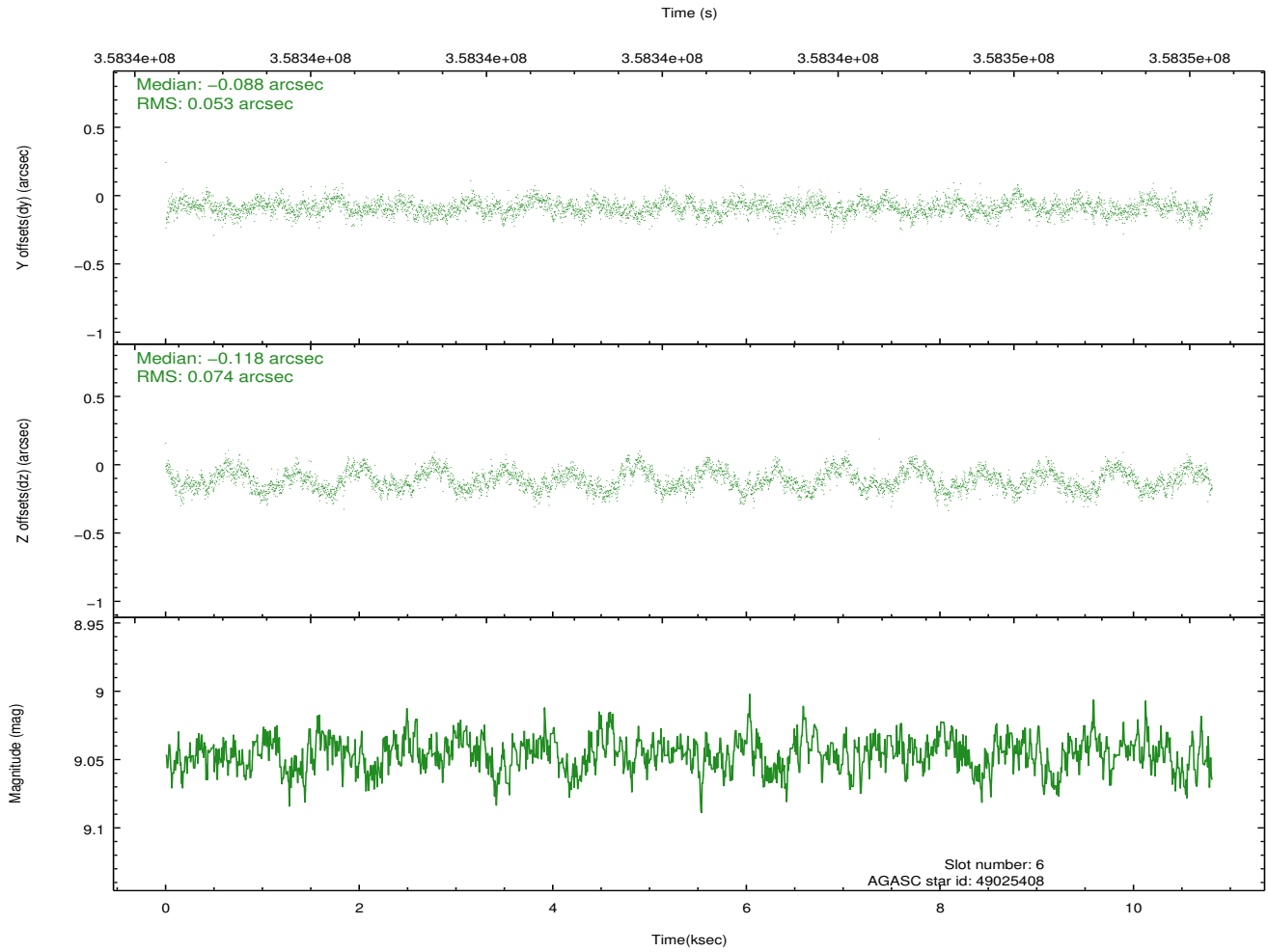
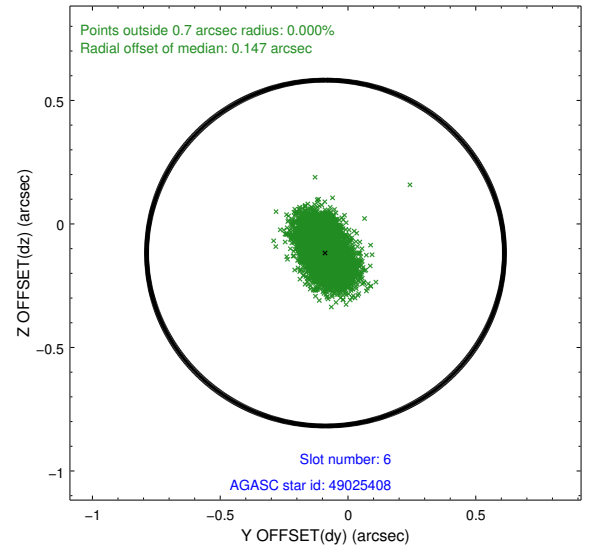
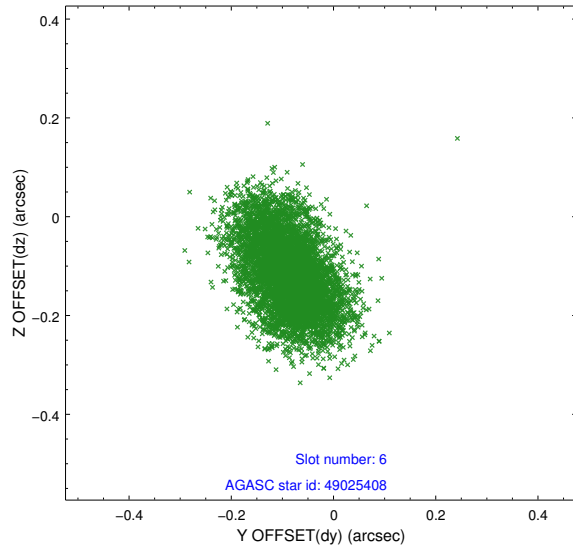
2.4.2 Slot 4



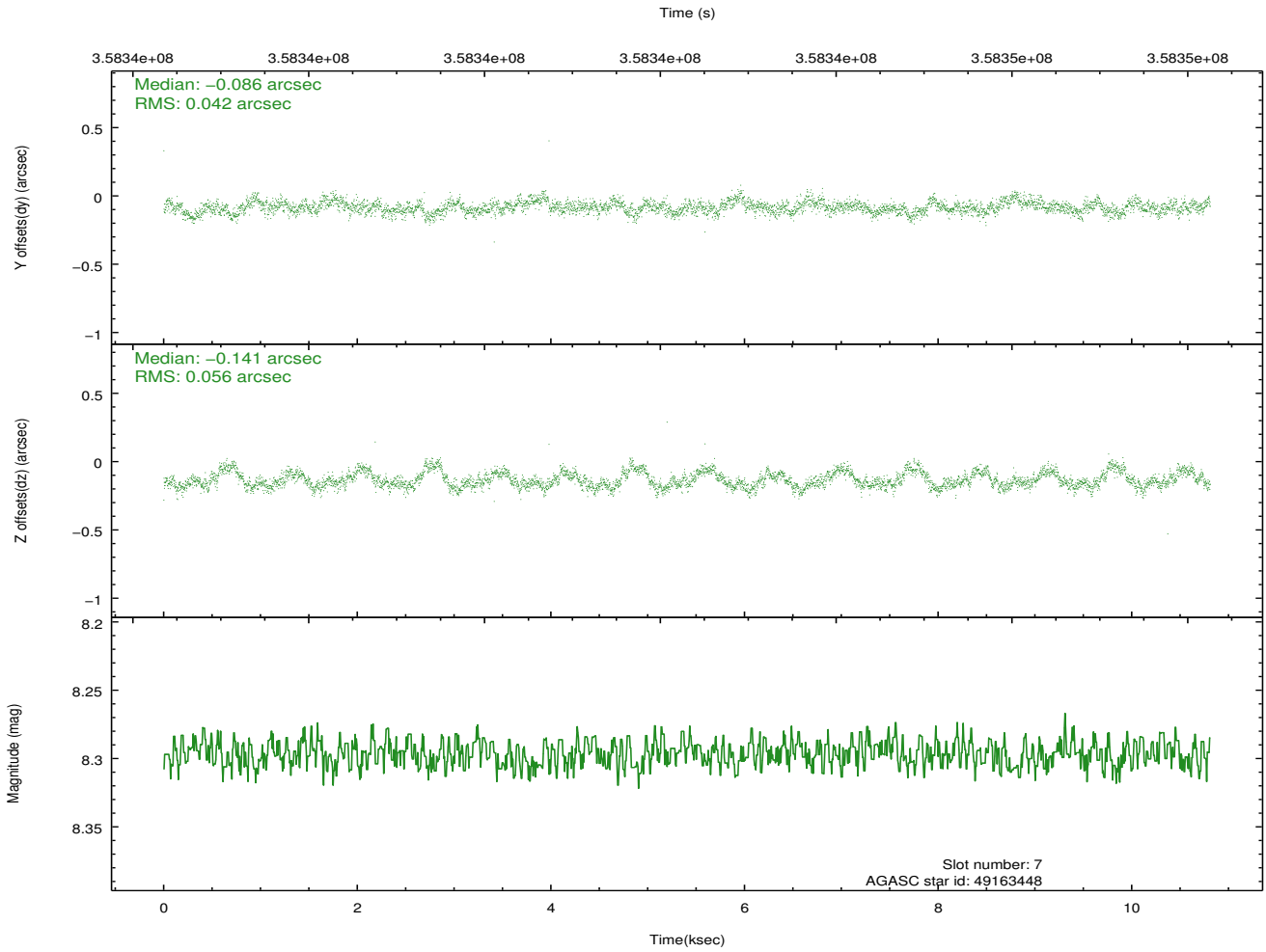
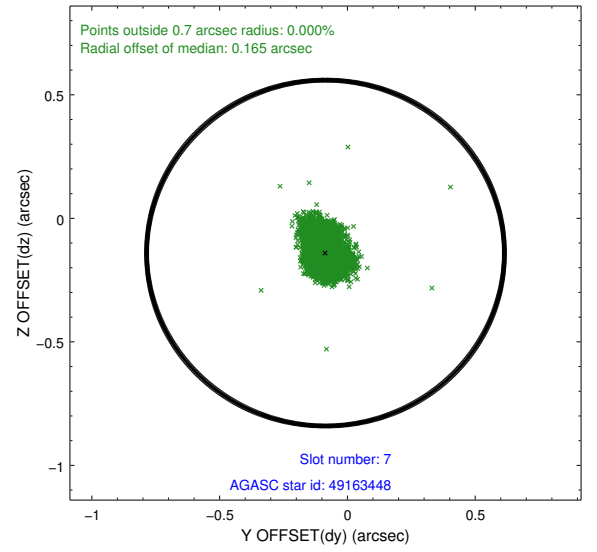
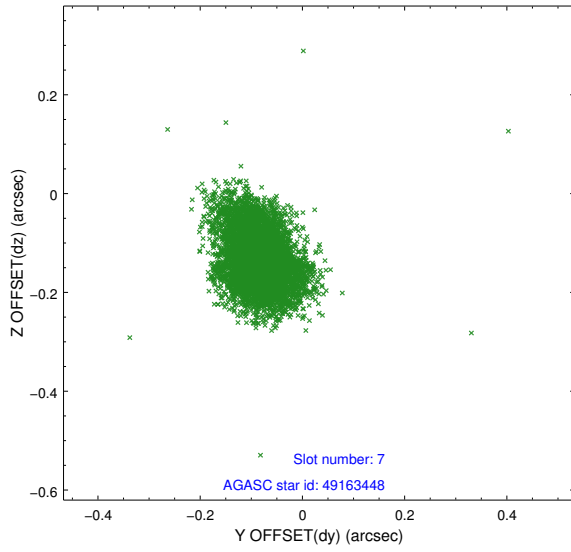
2.4.3 Slot 5



2.4.4 Slot 6

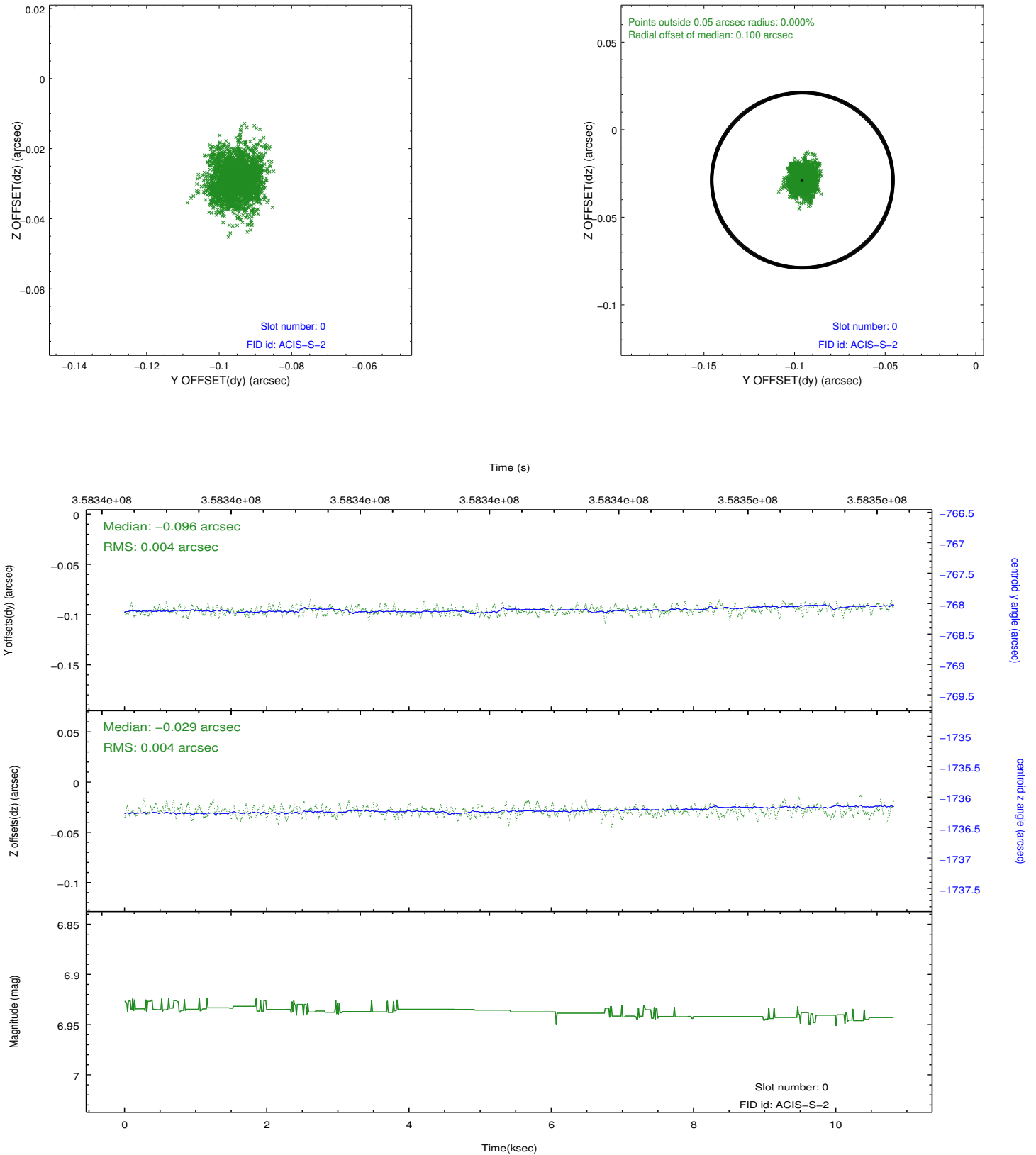


2.4.5 Slot 7

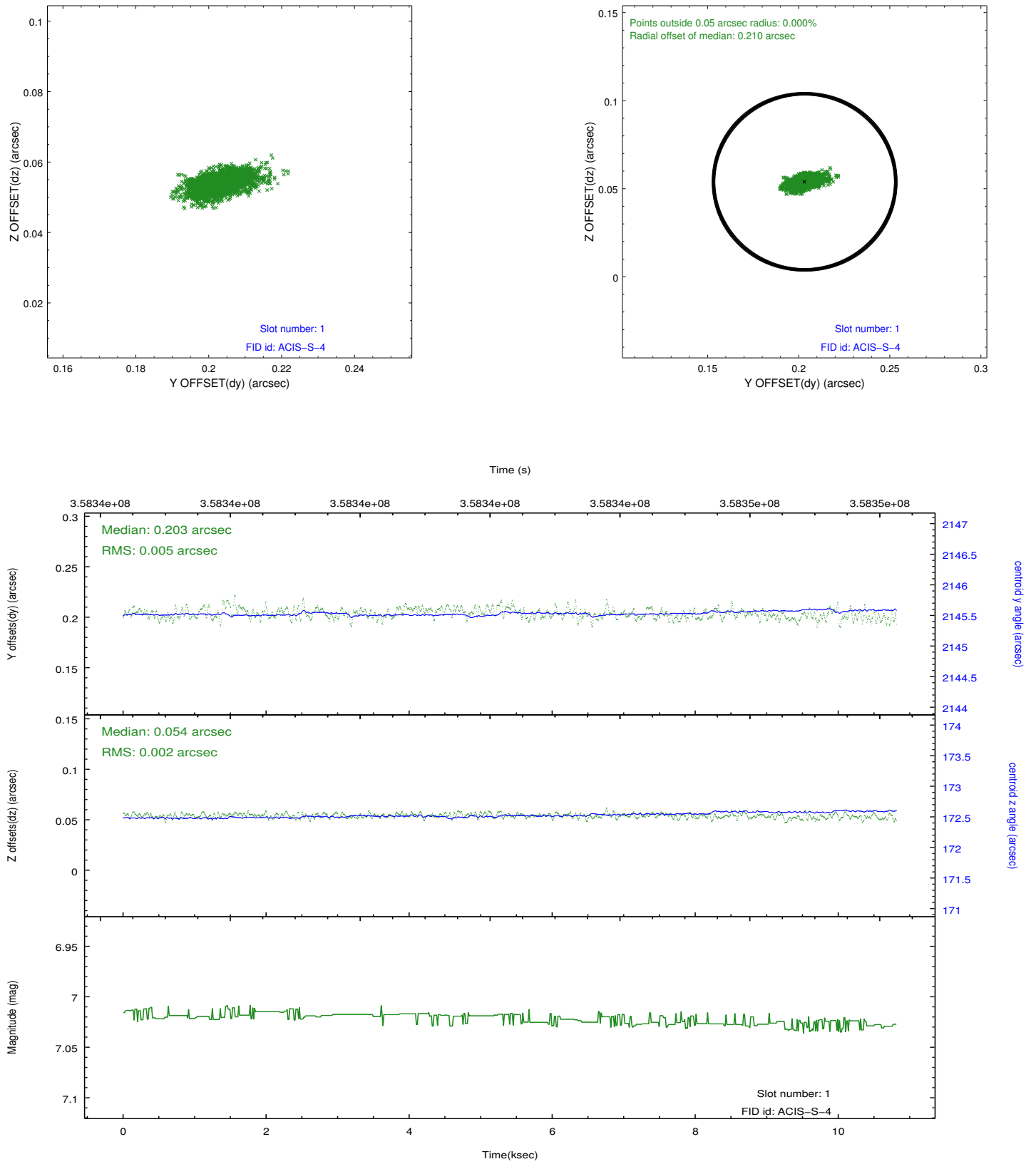


2.5 FID Slots

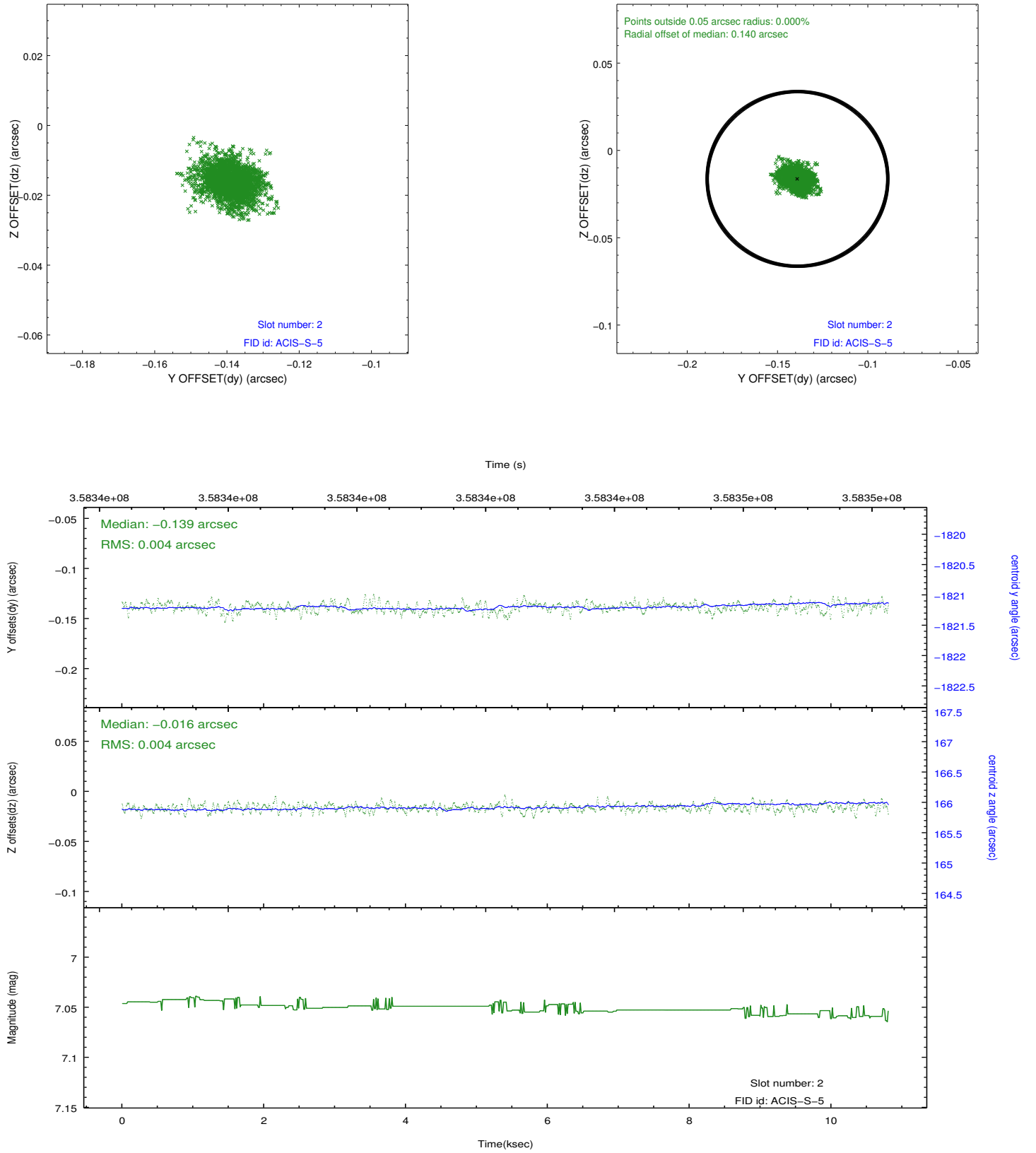
2.5.1 Slot 0



2.5.2 Slot 1



2.5.3 Slot 2



A Summary

A.1 Status

V&V Scientist	Beth Sundheim
V&V Date (YYYY-MM-DD)	2012.06.08
V&V Edition	1
V&V Disposition and Status	OK
V&V Charge Time	10.0383999

A.2 Comments