

V&V Reference Report

L2 ASCDS Version : 8.4.4

Observation 9798 - L2 Version 2
Chandra X-Ray Center

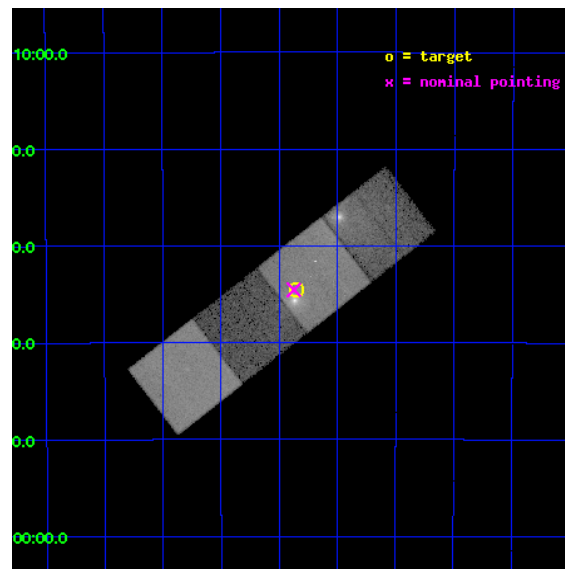
L2 Processing Date : May 6 2012

Contents

1	Front	2
2	OBI	3
2.1	OBI	3
2.1.1	Images	3
2.1.2	Bias	3
2.1.3	Parameters	4
2.1.4	Events	4
2.2	Compared Parameters	5
2.3	Aspect	6
2.4	Star Slots	9
2.4.1	Slot 3	9
2.4.2	Slot 4	10
2.4.3	Slot 5	11
2.4.4	Slot 6	12
2.4.5	Slot 7	13
2.5	FID Slots	14
2.5.1	Slot 0	14
2.5.2	Slot 1	15
2.5.3	Slot 2	16
A	Summary	17
A.1	Status	17
A.2	Comments	17

1 Front

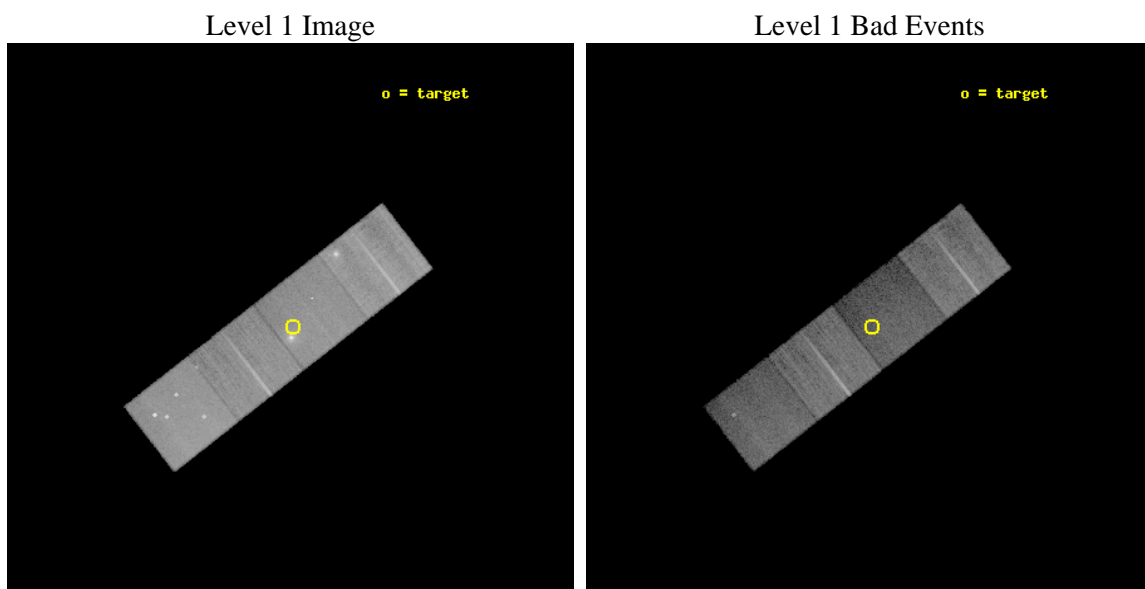
seq_num	501014	Sequence number
obs_id	9798	Observation id
title	Chandra observations of a nearby supernova	Proposal title
observer	Dr Gijs Roelofs	Principal investigator
object	SN2007on	Source name
dtcycle	0	
cycle	P	events from which exps? Prim/Second/Both
ra_targ	54.7125	Observer's specified target RA [deg]
dec_targ	-35.575278	Observer's specified target Dec [deg]
ra_nom	54.718424694848	Nominal RA [deg]
dec_nom	-35.575786029324	Nominal Dec [deg]
roll_nom	322.05007339714	Nominal Roll [deg]
revision	2	Processing version of data
ontime	18542.769351542	Sum of GTIs [s]
livetime	18300.494418976	Livetime [s]
ontime5	18542.728311539	Sum of GTIs [s]
ontime6	18542.687271535	Sum of GTIs [s]
ontime7	18542.769351542	Sum of GTIs [s]
ontime8	18542.646231532	Sum of GTIs [s]
l2events	226790	Number of level 2 events



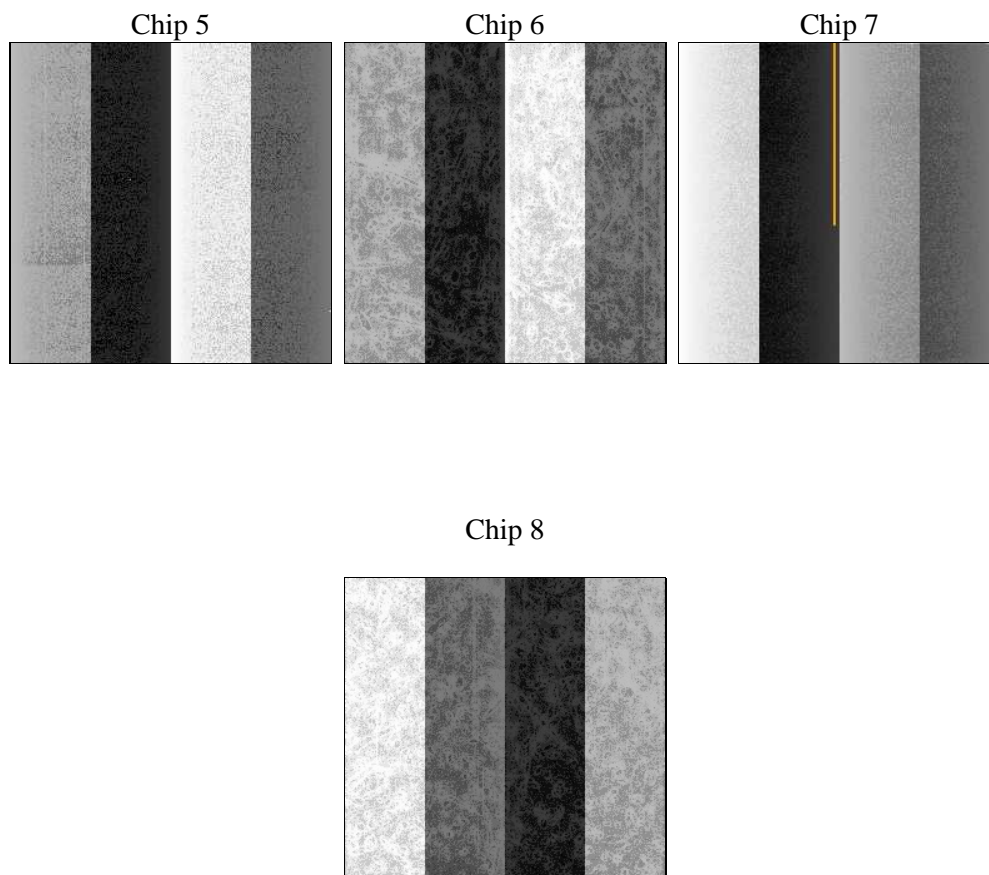
2 OBI

2.1 OBI

2.1.1 Images



2.1.2 Bias



2.1.3 Parameters

obi_num	0	Obi number	sched_exp_time	18500.000000	[s] Scheduled observation exposure time
ascdsver	8.4.4	Processing system revision	ontime	18542.769351542	Sum of GTIs [s]
caldsver	4.4.9	 	ontime5	18542.728311539	Sum of GTIs [s]
date	2012-05-06T14:34:35	Date and time of file creation	ontime6	18542.687271535	Sum of GTIs [s]
revision	2	Processing version of data	ontime7	18542.769351542	Sum of GTIs [s]
			ontime8	18542.646231532	Sum of GTIs [s]
			l1events	681076	Number of level 1 events

2.1.4 Events

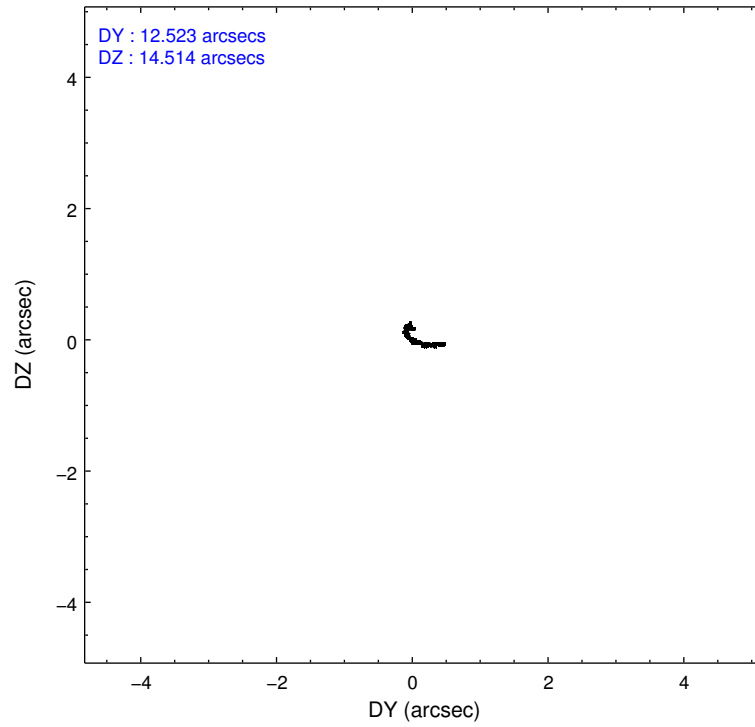
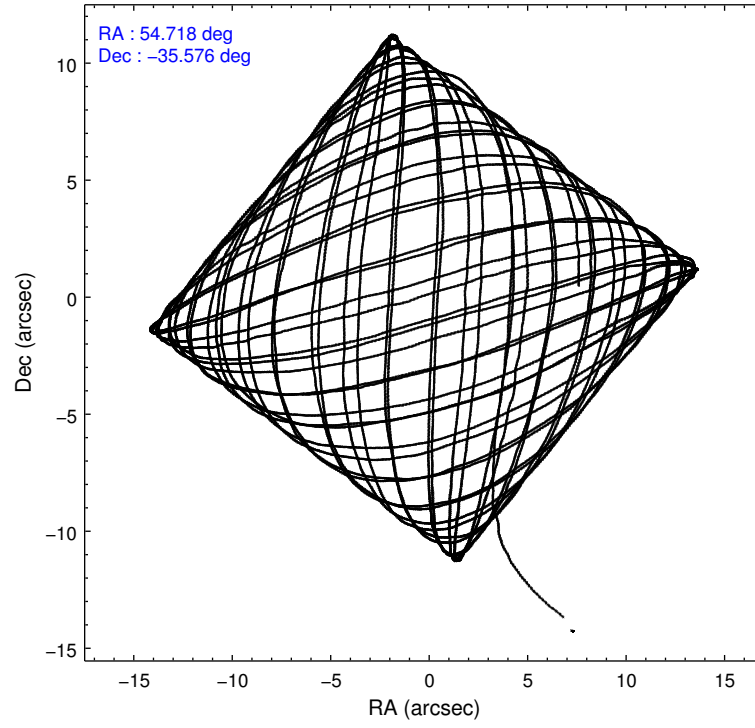
	ccd 5	ccd 6	ccd 7	ccd 8
level 1 events	183394	144435	158647	194600
rejected events	81971	126213	67642	131781
rejected %	44%	87%	42%	67%

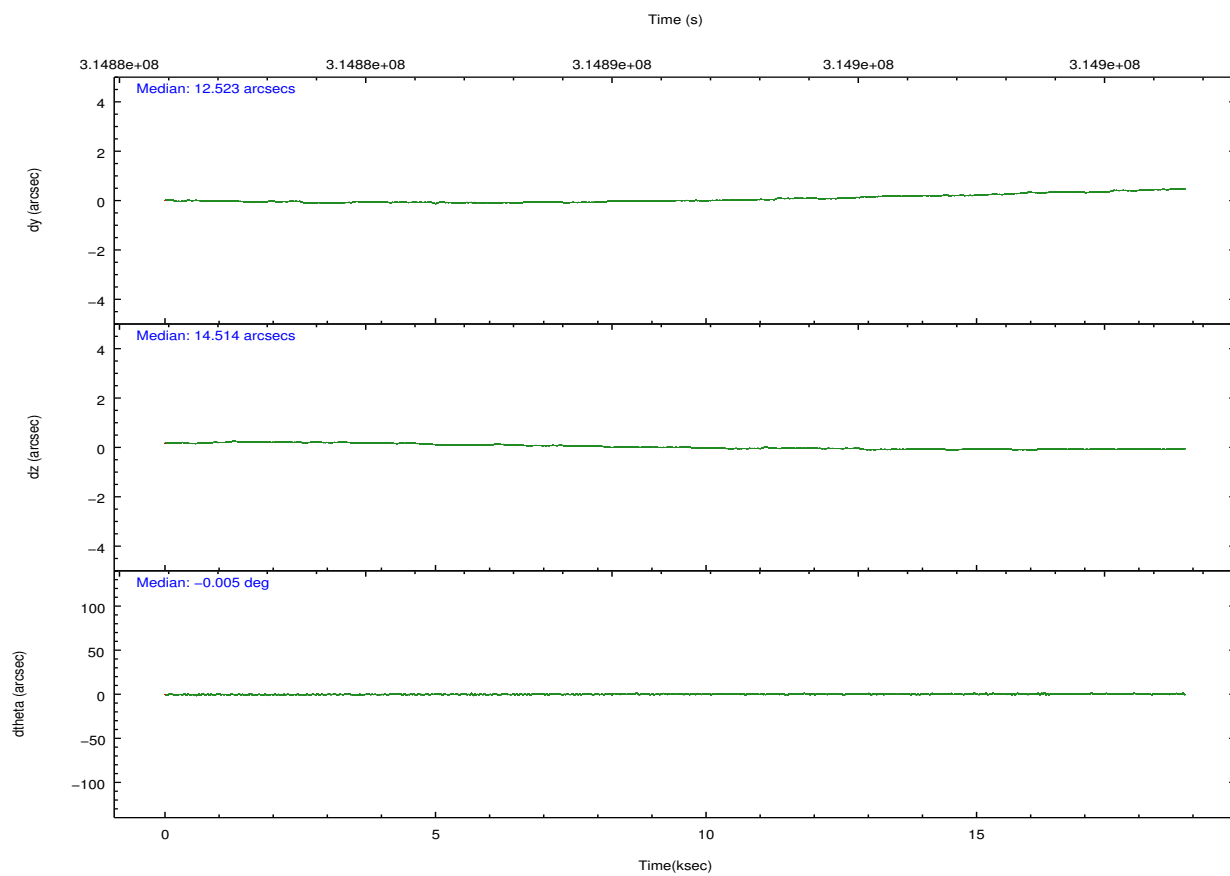
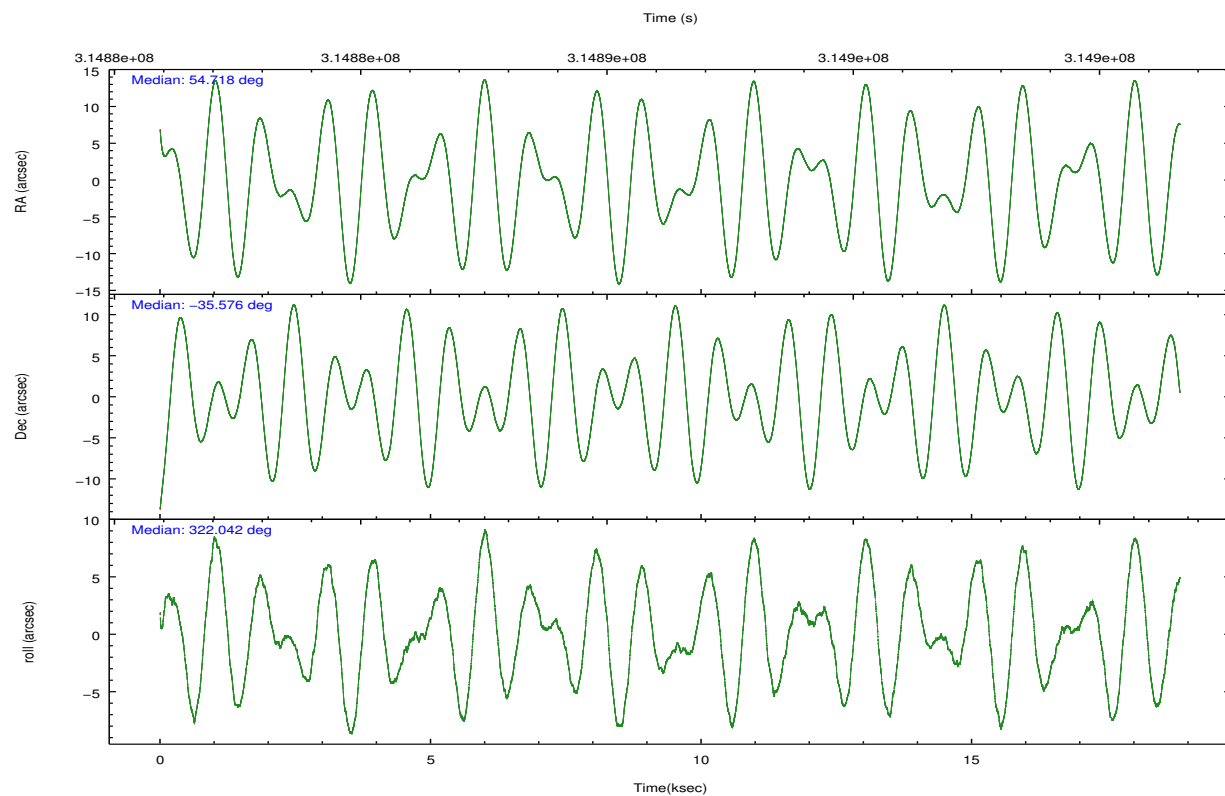
	ccd 5	ccd 6	ccd 7	ccd 8
grade 0 events	16515	8486	14840	29254
	9%	5%	9%	15%
grade 1 events	892	90	226	199
	0%	0%	0%	0%
grade 2 events	29109	3478	20802	11939
	15%	2%	13%	6%
grade 3 events	4452	1748	9278	5165
	2%	1%	5%	2%
grade 4 events	4460	1655	9234	4832
	2%	1%	5%	2%
grade 5 events	14311	4913	14314	7640
	7%	3%	9%	3%
grade 6 events	46924	2861	36879	11658
	25%	1%	23%	5%
grade 7 events	66731	121204	53074	123913
	36%	83%	33%	63%

2.2 Compared Parameters

Parameter	Planned	Actual	Parameter	Planned	Actual
Instrument	ACIS	ACIS	Obspar format version number	7	7
Detector	ACIS-5678	ACIS-5678	Obspar file type	PREDICTED	ACTUAL
Grating	NONE	NONE	Obspar update status	NONE	UPDATED
Data mode	VFAINT	VFAINT	Number of optional ACIS chips dropped	0	0
Observation mode	POINTING	POINTING	On-chip summing requested	N	N
[deg] Pointing RA	54.685064	54.71842469484837	Subarray requested	NONE	NONE
[deg] Pointing Dec	-35.572388	-35.57578602932441	Alternating exposures requested	N	N
[deg] Pointing Roll	321.874036	322.0500733971425	[s] Primary exposure time	0.000000	3.1
[mm] SIM focus pos	-0.684267	-0.6828225247311905			
[mm] SIM defocus	0	0.001444936568705701			
[mm] SIM translation stage pos	-190.132523	-190.1400660498719			
[mm] SIM translation stage offset	0	0.00754346686406393			
[s] Observation start time (MET)	314882207.184000	314881255.24635			
Observation start date	2007-12-24T11:15:42	2007-12-24T11:00:55			
[s] Observation end time (MET)	314900707.184000	314901338.58483			
Observation end date	2007-12-24T16:24:02	2007-12-24T16:35:38			
Read mode	TIMED	TIMED			

2.3 Aspect



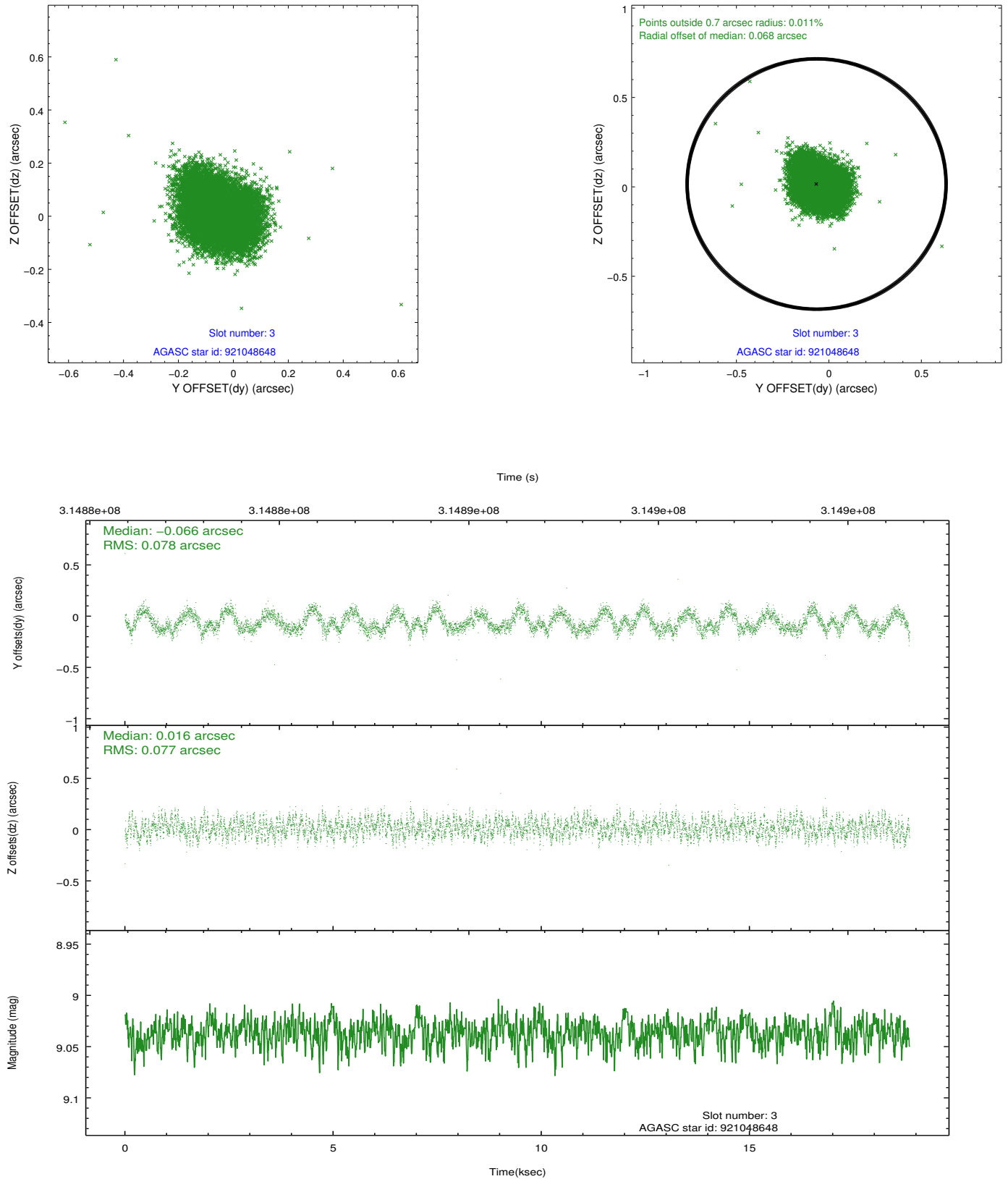


Slot Statistics

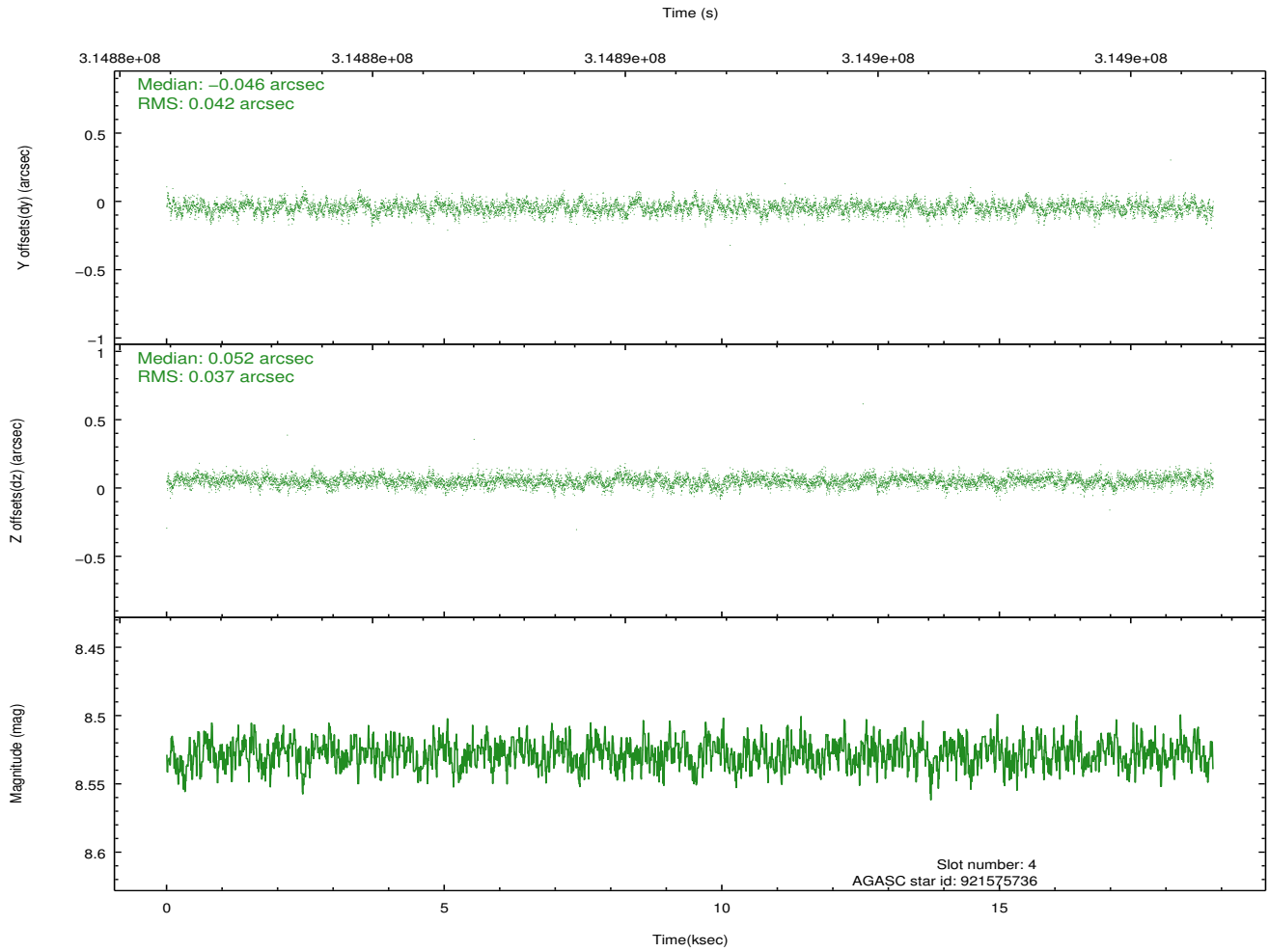
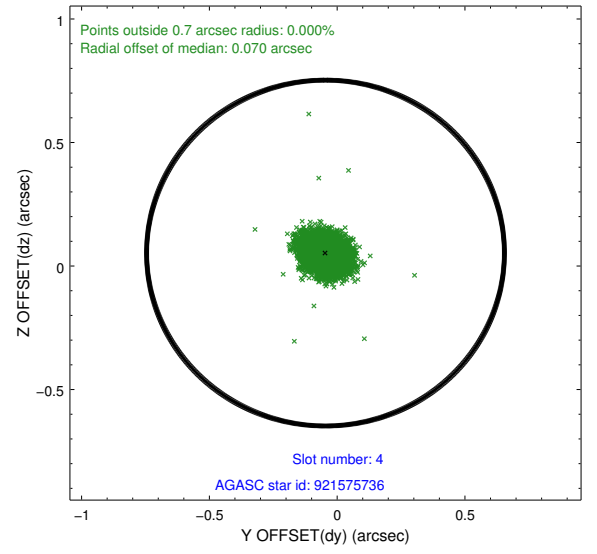
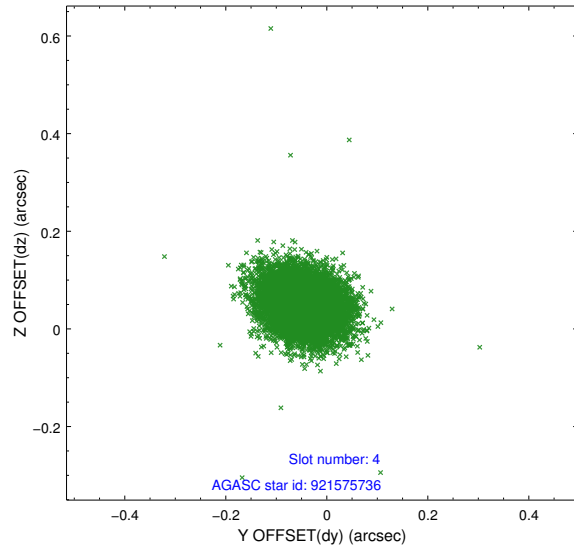
slot	status	id	mag	n_pts	med_dy	med_dz	dr1	dr2	ra	dec	mean_y	mean_z
0	FID	ACIS-S-2	7.09	4598	-0.049	-0.036	0.008	0.013	0.000000	0.000000	-765.53	-1735.96
1	FID	ACIS-S-4	7.19	4597	0.152	0.034	0.008	0.016	0.000000	0.000000	2147.83	172.41
2	FID	ACIS-S-5	7.23	4598	-0.133	0.012	0.009	0.017	0.000000	0.000000	-1818.21	166.25
3	GUIDE	921048648	9.04	9188	-0.066	0.016	0.120	0.180	53.884610	-35.870023	-1169.18	-2291.59
4	GUIDE	921575736	8.53	9194	-0.046	0.052	0.059	0.097	54.586331	-34.827401	-1885.47	1929.42
5	GUIDE	921965624	8.62	9192	0.254	0.065	0.074	0.121	54.900706	-35.940077	1312.51	-653.11
6	GUIDE	921966528	6.75	9195	-0.080	-0.007	0.061	0.099	54.675841	-35.204254	-839.39	1025.98
7	GUIDE	921970016	9.38	9183	-0.069	-0.125	0.135	0.206	54.228536	-36.081558	90.28	-2263.06

2.4 Star Slots

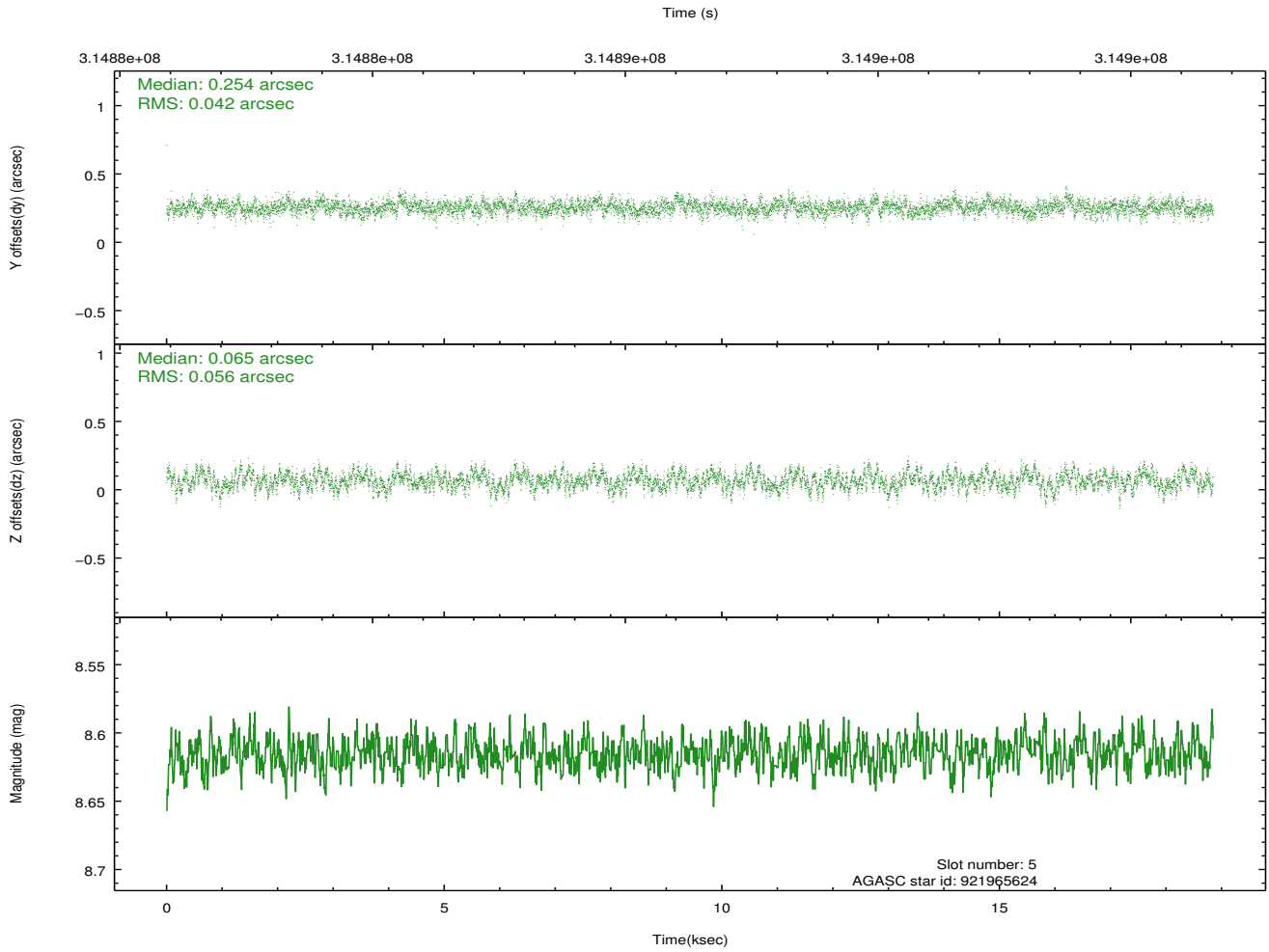
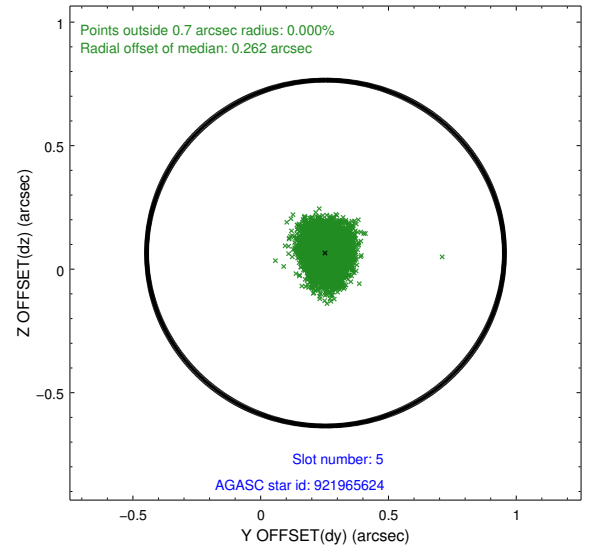
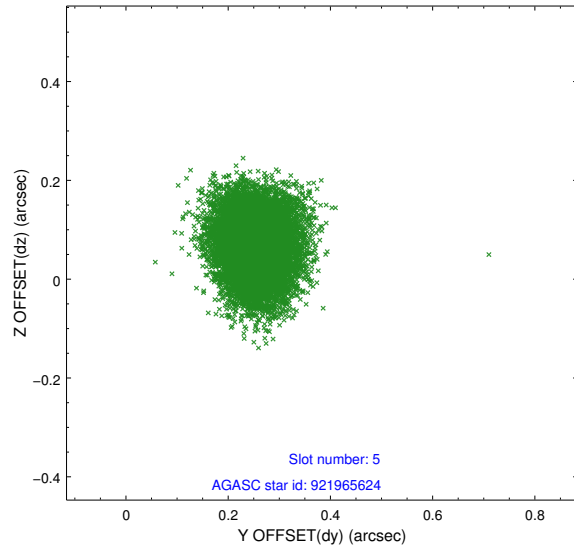
2.4.1 Slot 3



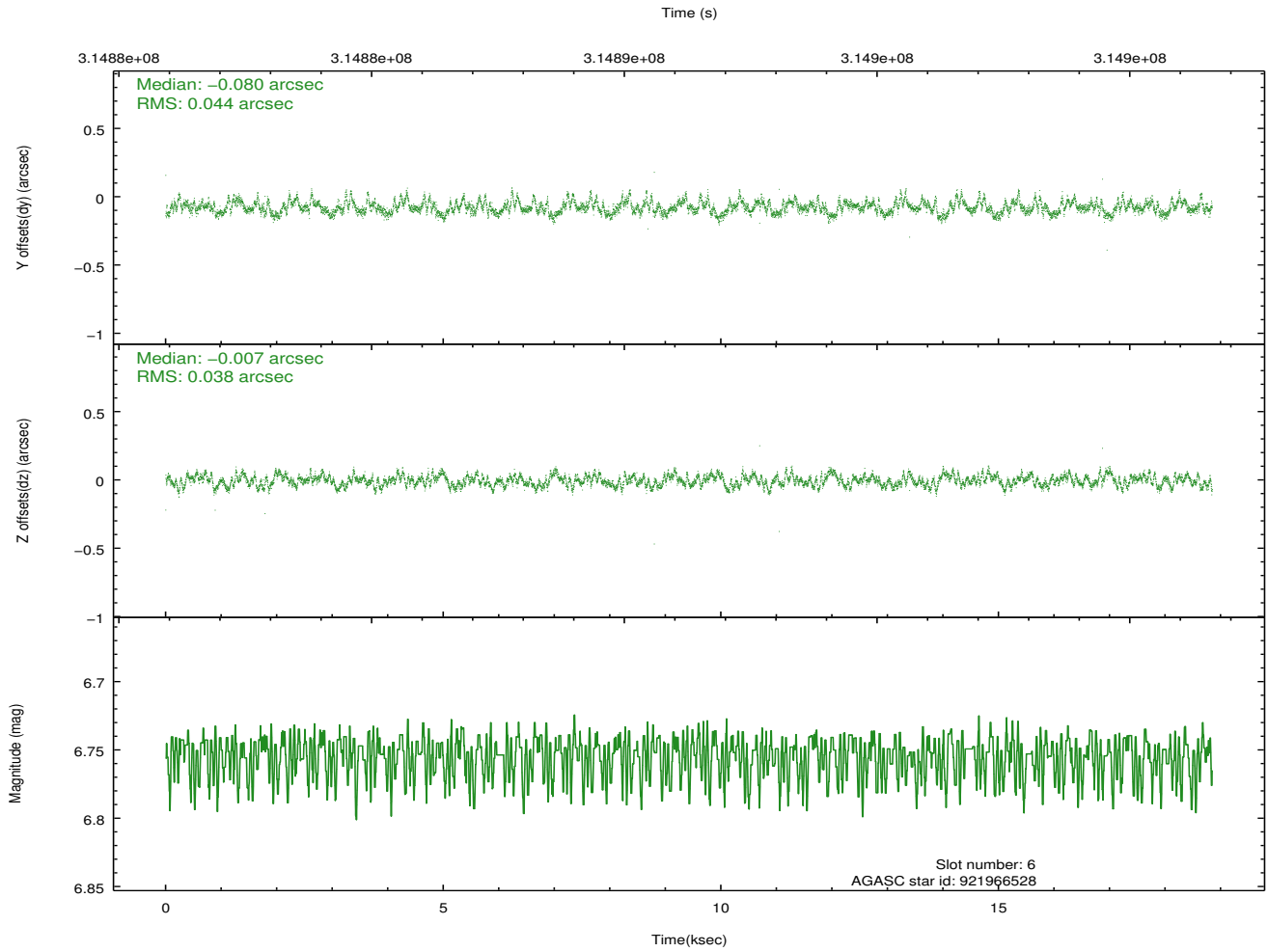
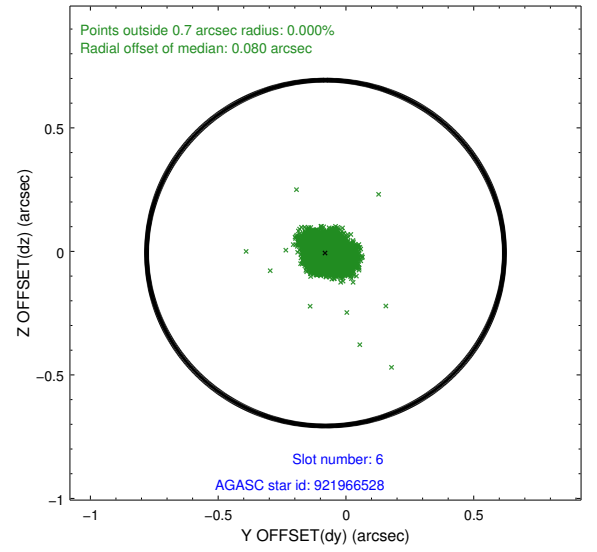
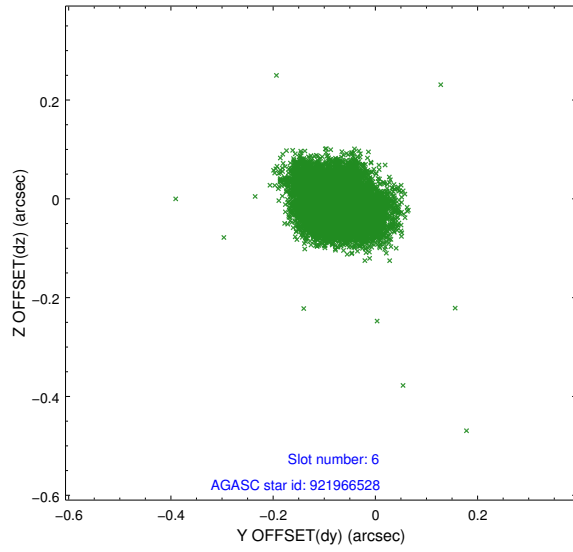
2.4.2 Slot 4



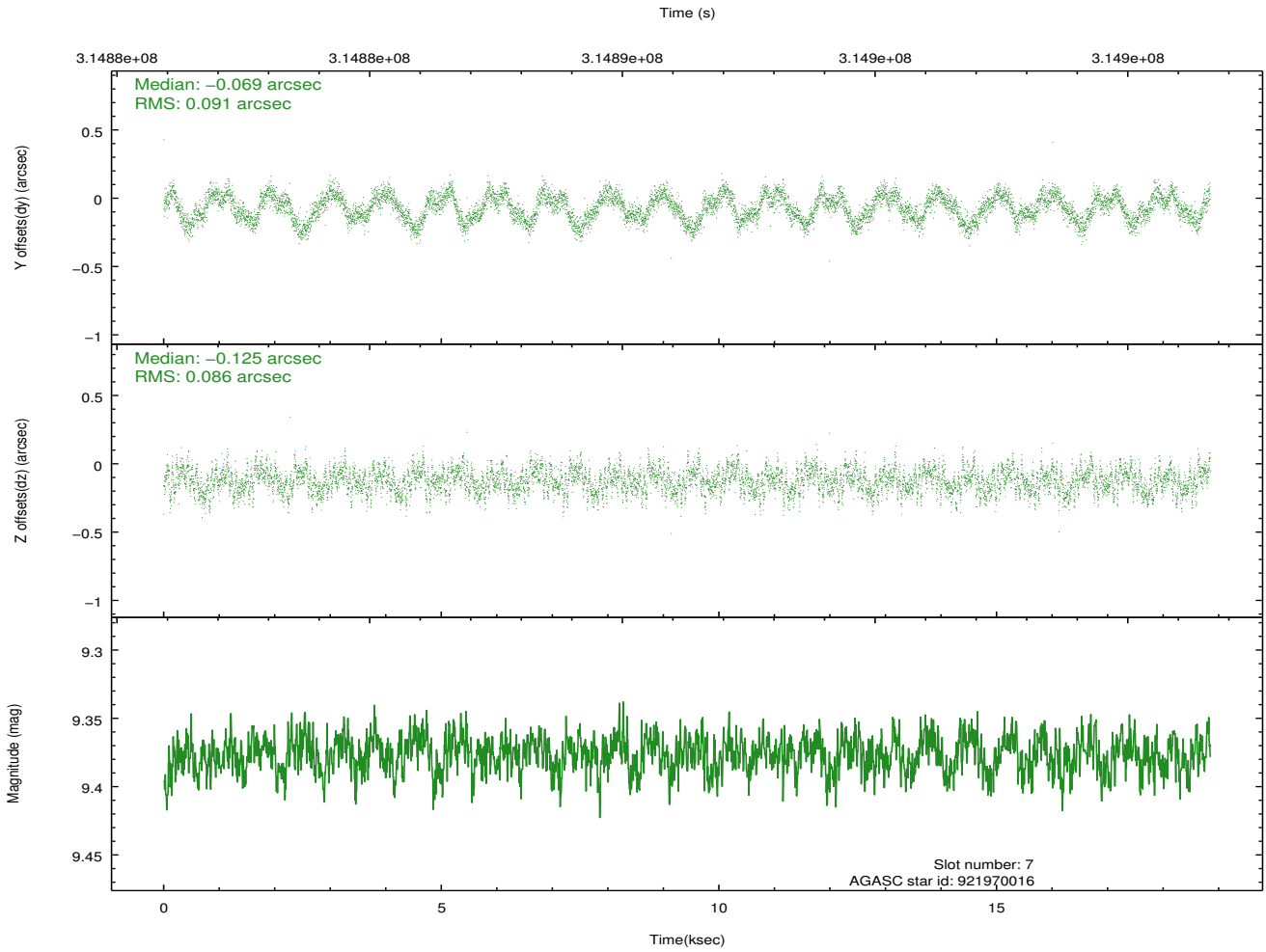
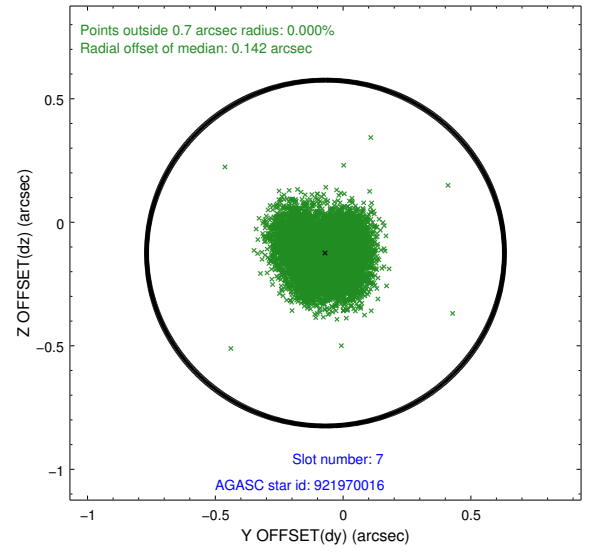
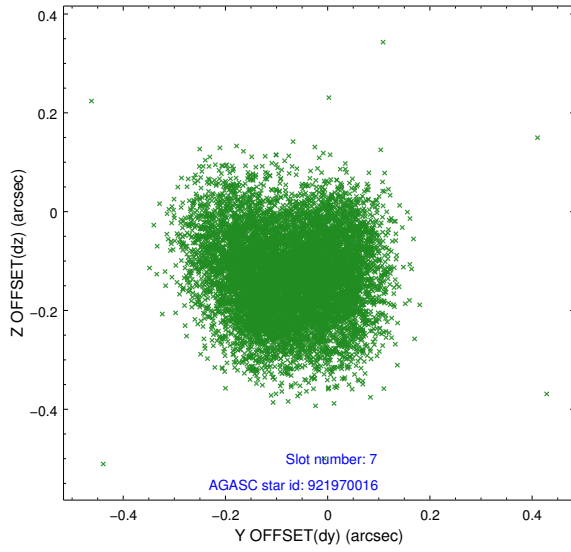
2.4.3 Slot 5



2.4.4 Slot 6

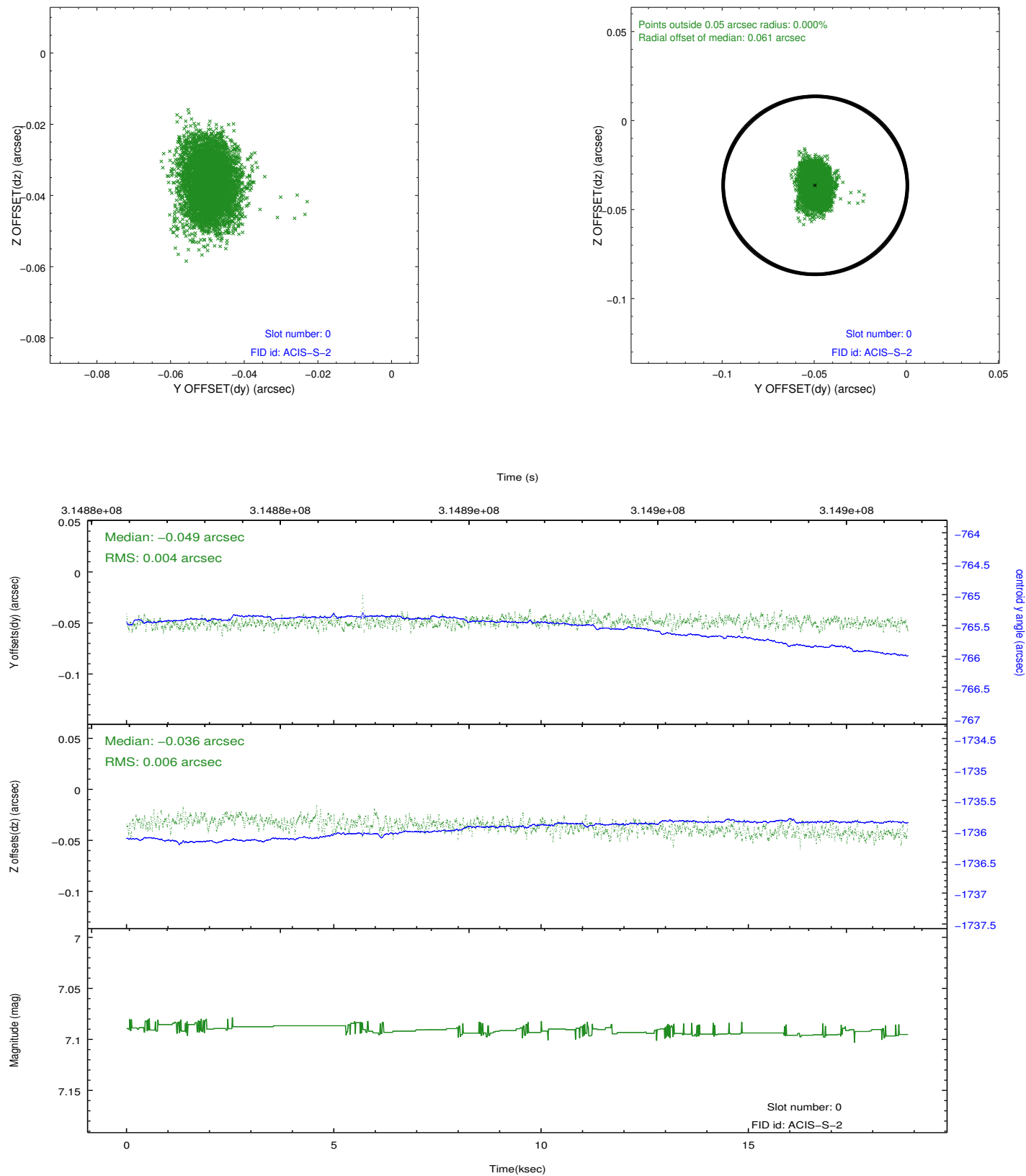


2.4.5 Slot 7

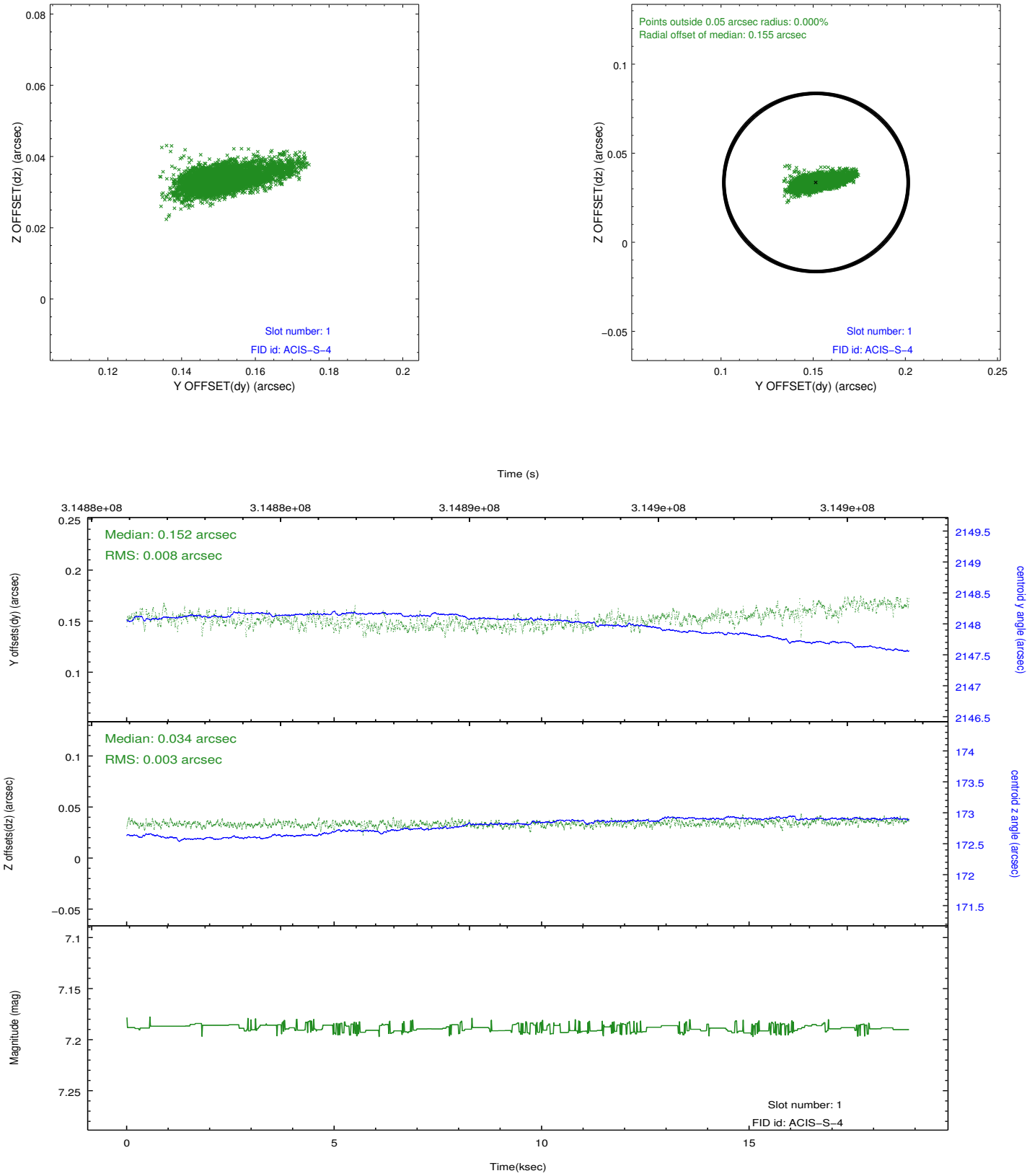


2.5 FID Slots

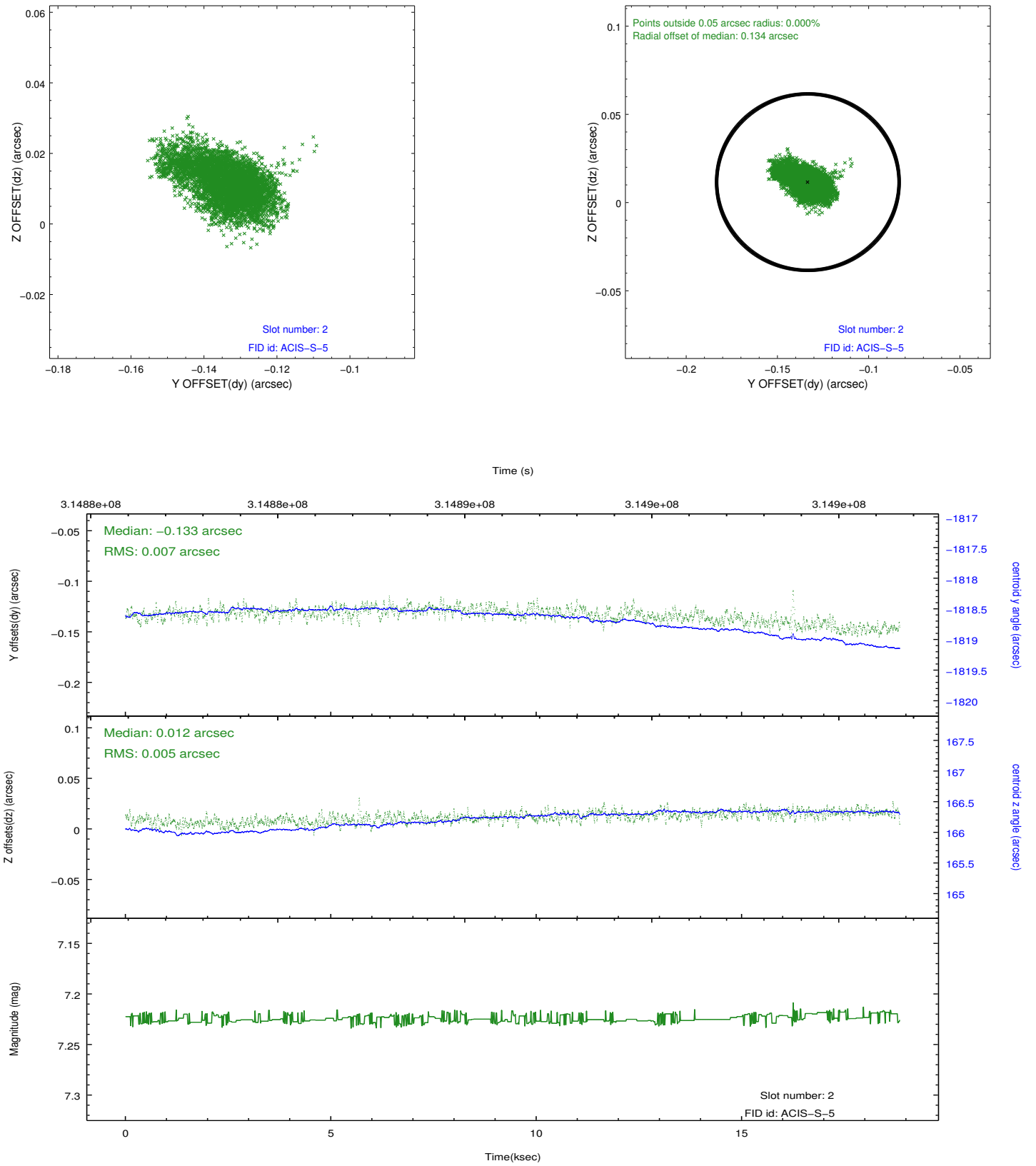
2.5.1 Slot 0



2.5.2 Slot 1



2.5.3 Slot 2



A Summary

A.1 Status

V&V Scientist	Jen Lauer
V&V Date (YYYY-MM-DD)	2012.05.08
V&V Edition	1
V&V Disposition and Status	OK
V&V Charge Time	18.5442001

A.2 Comments