

# V&V Reference Report

## L2 ASCDS Version : 7.6.10

Observation 938 - L2 Version 001  
Chandra X-Ray Center

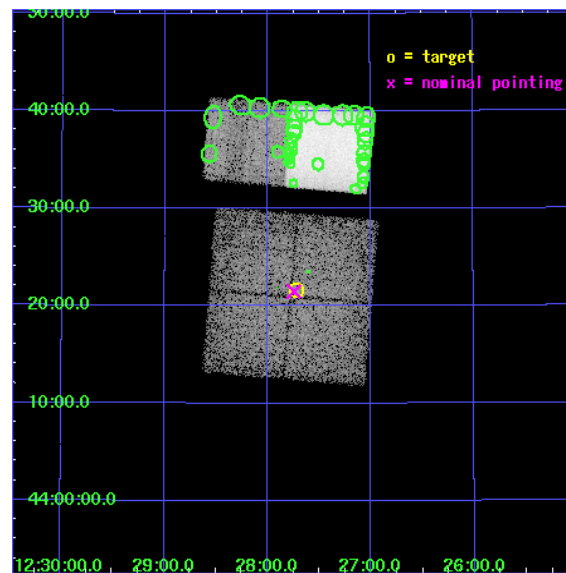
L2 Processing Date : Jun 9 2007

## Contents

<b>1</b>	<b>Front</b>	<b>2</b>
<b>2</b>	<b>OBI</b>	<b>3</b>
2.1	OBI . . . . .	3
2.1.1	Images . . . . .	3
2.1.2	Bias . . . . .	3
2.1.3	Parameters . . . . .	4
2.1.4	Events . . . . .	4
2.2	Compared Parameters . . . . .	5
2.3	Aspect . . . . .	6
2.4	Star Slots . . . . .	9
2.4.1	Slot 3 . . . . .	9
2.4.2	Slot 4 . . . . .	10
2.4.3	Slot 5 . . . . .	11
2.4.4	Slot 6 . . . . .	12
2.4.5	Slot 7 . . . . .	13
2.5	FID Slots . . . . .	14
2.5.1	Slot 0 . . . . .	14
2.5.2	Slot 1 . . . . .	15
2.5.3	Slot 2 . . . . .	16
<b>3</b>	<b>Point Sources</b>	<b>17</b>
<b>A</b>	<b>Summary</b>	<b>18</b>
A.1	Status . . . . .	18
A.2	Comments . . . . .	18

# 1 Front

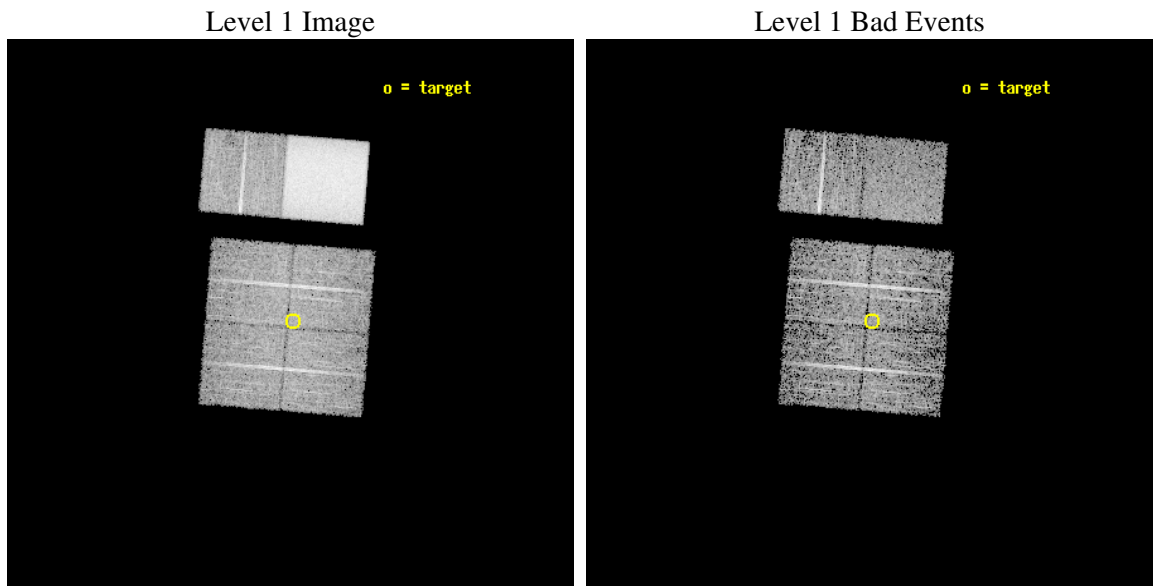
seq_num	900010
obs_id	938
title	AXAF OBSERVATION OF FAINT HARD X-RAY SOURCES DISCOVERED WITH ASCA
observer	DR. TADAYUKI TAKAHASHI
object	AX J1227+4421
dtcycle	0
cycle	P
ra_targ	186.93
dec_targ	44.359806
ra_nom	186.93638596429
dec_nom	44.358254850933
roll_nom	4.7304399280981
revision	2
ontime	5645.5465568602
livetime	5574.0592470172
ontime0	5655.2696170062
ontime1	5658.5109960437
ontime2	5571.0041325837
ontime3	5645.5465568602
ontime6	5677.9563785195
ontime7	5921.0293329358
l2events	174936



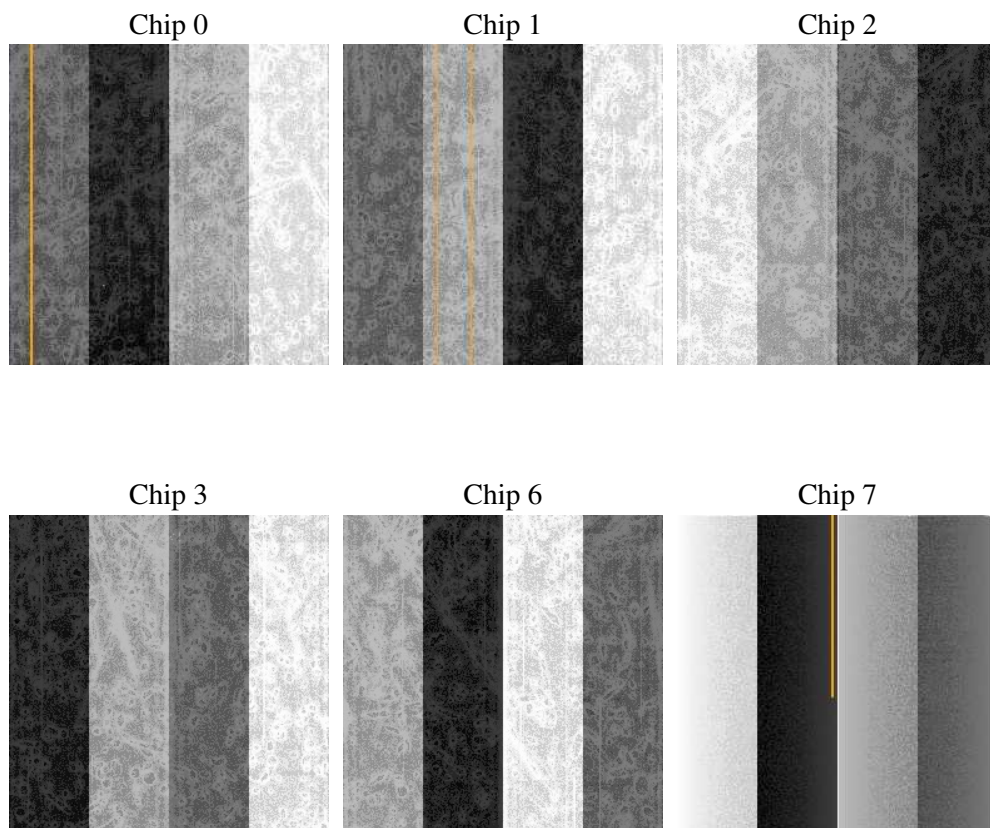
## 2 OBI

### 2.1 OBI

#### 2.1.1 Images



#### 2.1.2 Bias



### 2.1.3 Parameters

obi_num	0
ascdsver	7.6.10
caldbver	3.4.0
date	2007-06-09T16:45:57
revision	2

sched_exp_time	6338.118000
ontime	5645.5465568602
ontime0	5655.2696170062
ontime1	5658.5109960437
ontime2	5571.0041325837
ontime3	5645.5465568602
ontime6	5677.9563785195
ontime7	5921.0293329358
llevents	355424

### 2.1.4 Events

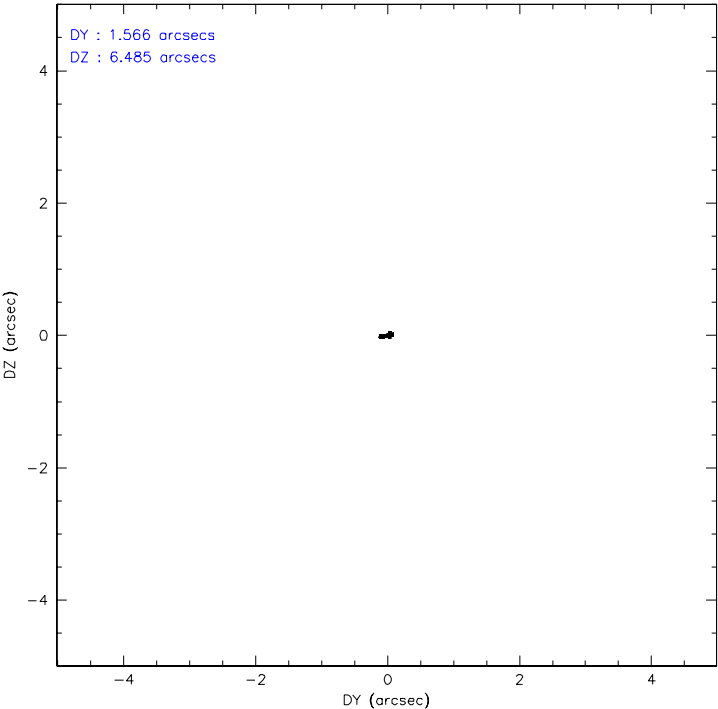
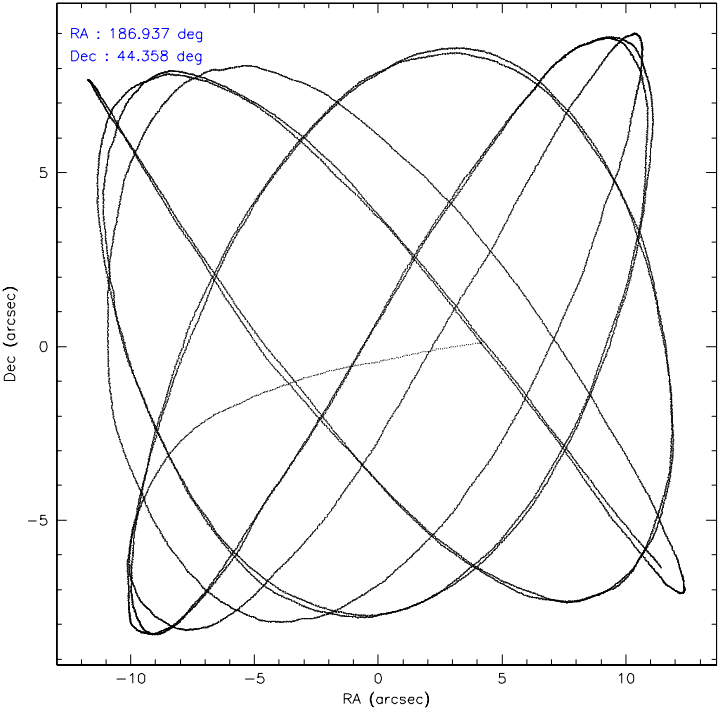
	ccd 0	ccd 1	ccd 2	ccd 3	ccd 6	ccd 7
level 1 events	35647	37385	39297	39216	46141	157738
rejected events	26407	27722	30226	30276	31624	28446
rejected %	74%	74%	76%	77%	68%	18%

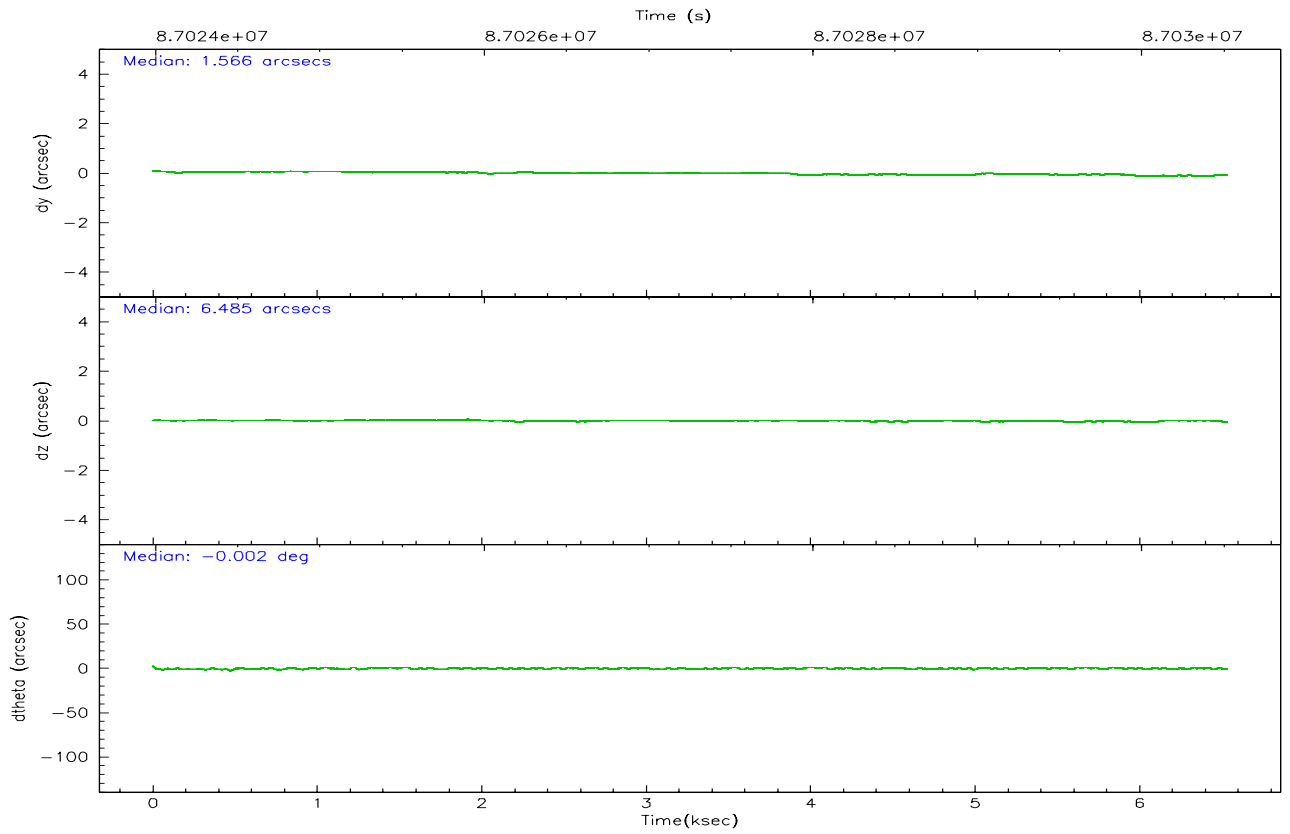
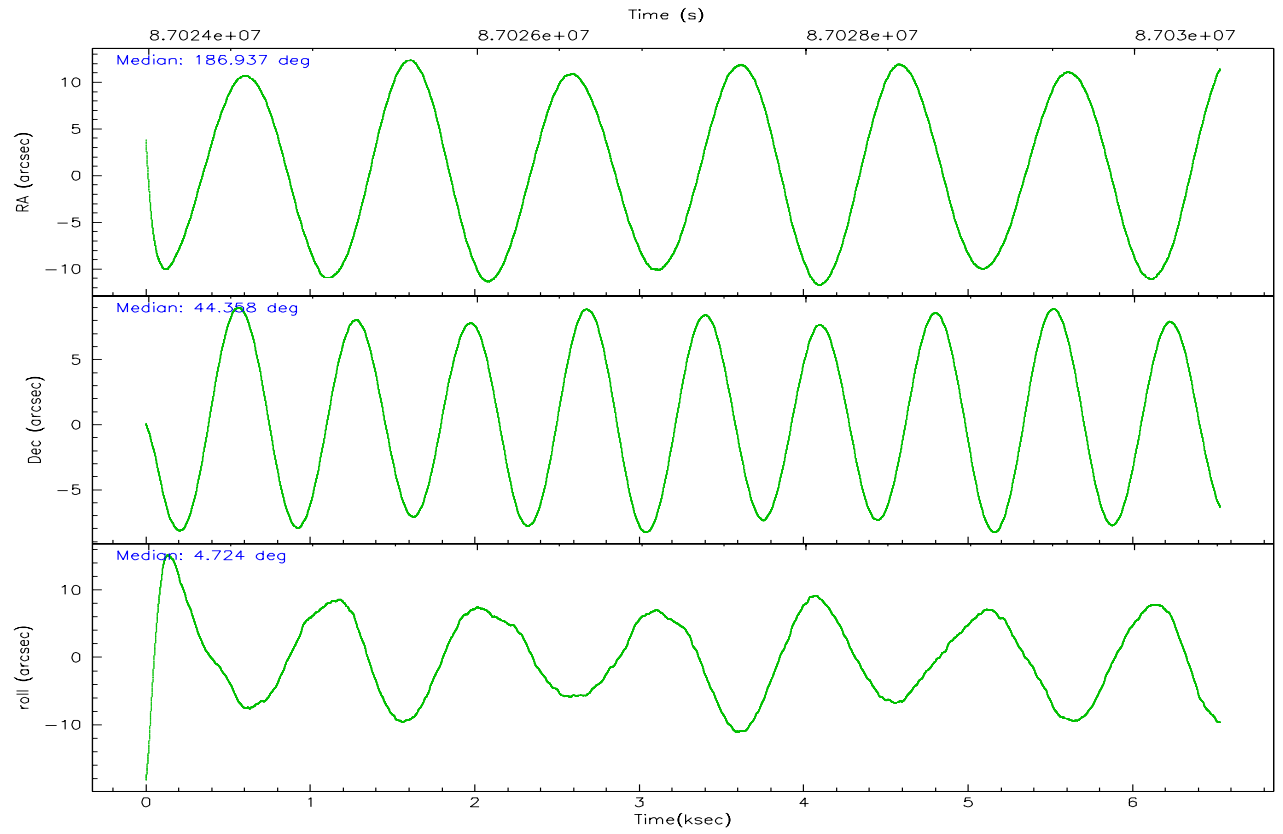
	ccd 0	ccd 1	ccd 2	ccd 3	ccd 6	ccd 7
grade 0 events	6009	6108	5938	5696	10391	15501
	16%	16%	15%	14%	22%	9%
grade 1 events	17	31	44	39	43	48
	0%	0%	0%	0%	0%	0%
grade 2 events	1569	1655	1526	1573	2164	22804
	4%	4%	3%	4%	4%	14%
grade 3 events	413	497	424	459	510	10121
	1%	1%	1%	1%	1%	6%
grade 4 events	464	506	429	468	511	10269
	1%	1%	1%	1%	1%	6%
grade 5 events	1234	1300	1126	1285	1415	4797
	3%	3%	2%	3%	3%	3%
grade 6 events	794	905	762	756	957	70705
	2%	2%	1%	1%	2%	44%
grade 7 events	25147	26383	29048	28940	30150	23493
	70%	70%	73%	73%	65%	14%

## 2.2 Compared Parameters

Parameter	Planned	Actual	Parameter	Planned	Actual
Instrument	ACIS	ACIS	Obspar format version number	6	6
Detector	ACIS-012367	ACIS-012367	Obspar file type	PREDICTED	ACTUAL
Grating	NONE	NONE	Obspar update status	NONE	UPDATED
Data mode	VFAINT	VFAINT	Number of optional ACIS chips dropped	0	0
Observation mode	POINTING	POINTING	On-chip summing requested	N	N
Pointing RA	186.904780	186.9363859642861	Subarray requested	NONE	NONE
Pointing Dec	44.342655	44.35825485093343	Alternating exposures requested	N	N
Pointing Roll	4.543891	4.730439928098058	Primary exposure time	3.200000	3.2
SIM focus pos (mm)	-0.782348	-0.7809083437167272			
SIM defocus (mm)	0	0.001439871863259334			
SIM translation stage pos (mm)	-233.592463	-233.5874344608287			
SIM translation stage offset (mm)	0	-0.005018542100998502			
Observation start time	87024179.184000	87023516.709556			
Observation start date	2000-10-04T05:21:55	2000-10-04T05:11:56			
Observation end time	87030517.184000	87030831.109832			
Observation end date	2000-10-04T07:07:33	2000-10-04T07:13:51			
Read mode	TIMED	TIMED			

## 2.3 Aspect





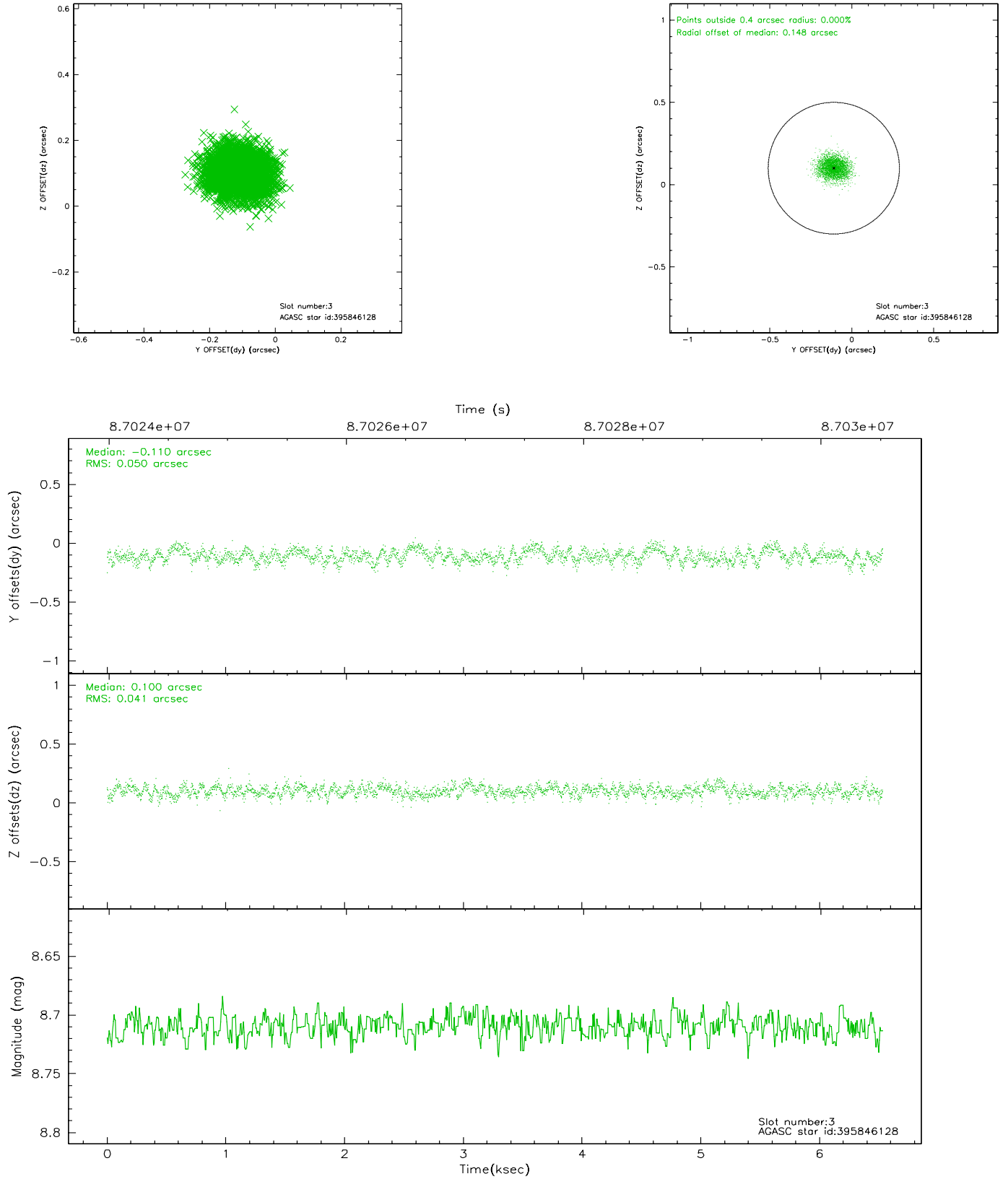
### Slot Statistics

slot	status	id	mag	n_pts	med_dy	med_dz	dr1	dr2	ra	dec	mean_y	mean_z
0	FID	ACIS-I-2	7.16	1594	-0.032	-0.044	0.009	0.015	0.000000	0.000000	-755.93	-836.28
1	FID	ACIS-I-4	7.18	1594	-0.091	0.038	0.006	0.010	0.000000	0.000000	2157.66	1069.54
2	FID	ACIS-I-5	7.23	1594	0.022	0.075	0.009	0.014	0.000000	0.000000	-1808.55	1068.43
3	GUIDE	395846128	8.71	3187	-0.110	0.100	0.069	0.110	187.720764	44.188706	2055.89	-708.88
4	GUIDE	395846264	9.48	3188	-0.029	0.047	0.078	0.130	187.191241	44.211279	699.45	-529.12
5	GUIDE	395855224	9.65	3187	0.110	-0.111	0.117	0.199	186.279112	44.799118	-1463.18	1770.14
6	GUIDE	395855392	9.86	3186	0.058	-0.003	0.103	0.163	186.593517	44.710998	-689.94	1386.66
7	GUIDE	395854648	9.97	3187	-0.037	-0.035	0.108	0.175	187.682941	44.741066	2096.82	1281.96

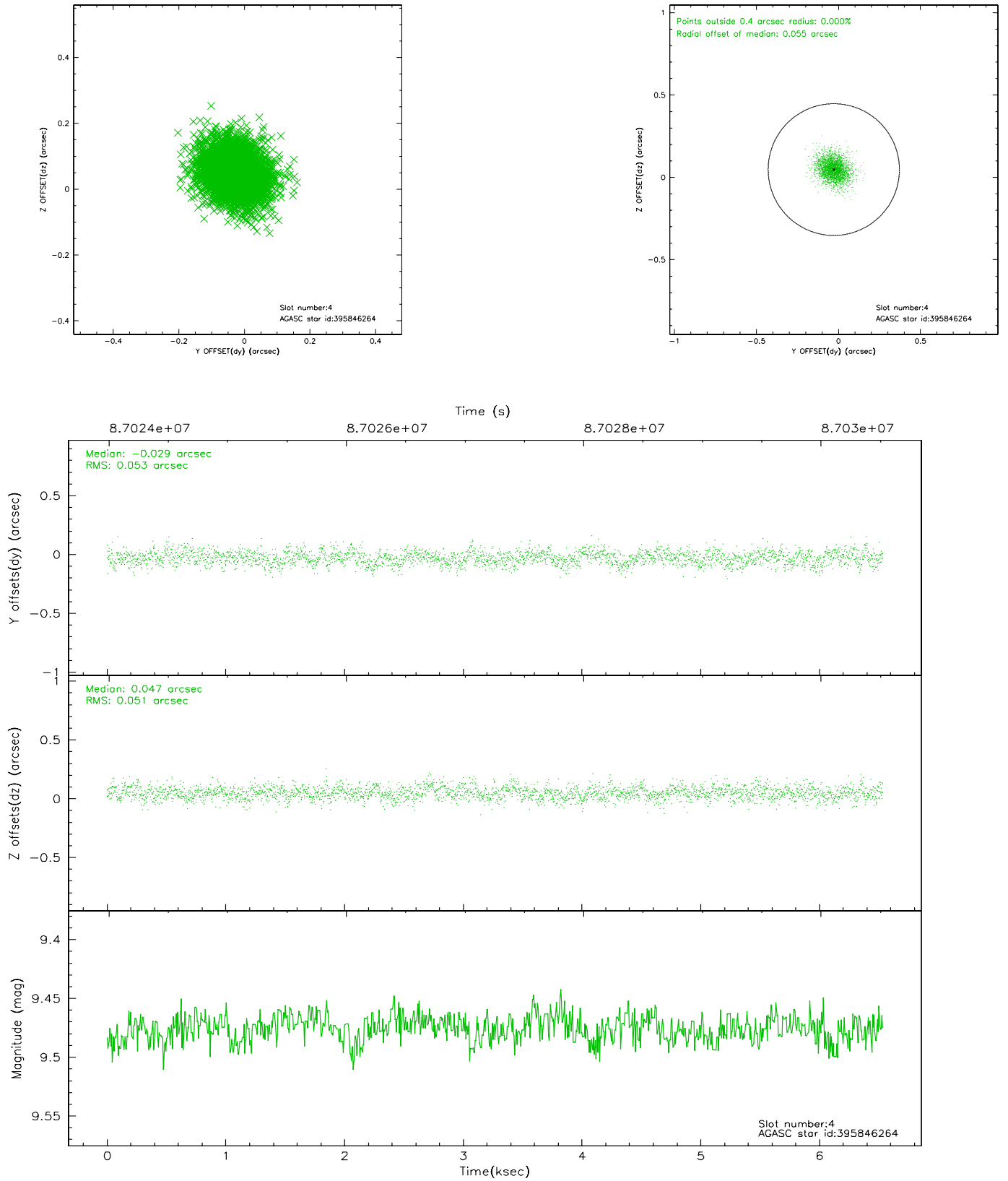


## 2.4 Star Slots

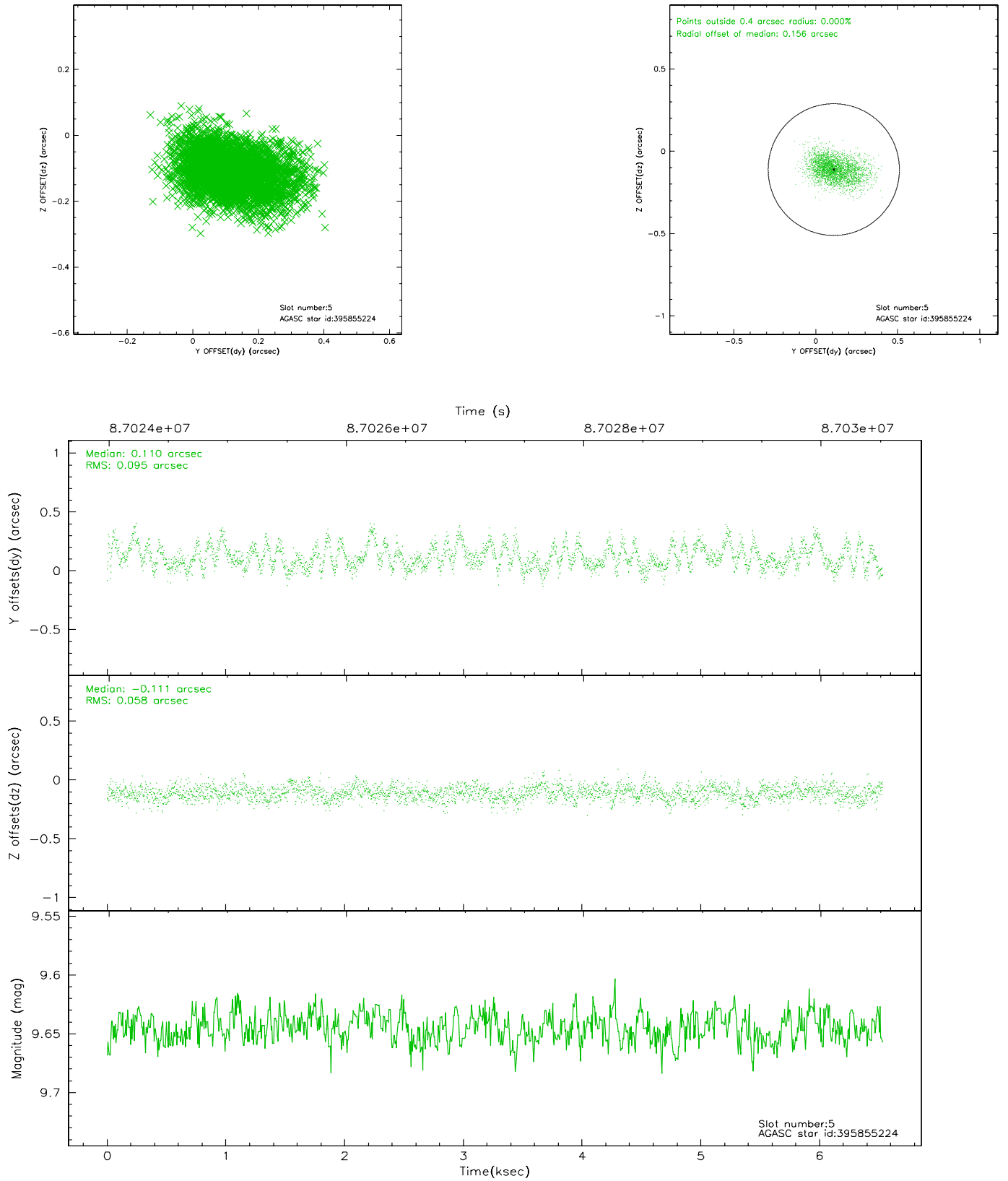
### 2.4.1 Slot 3



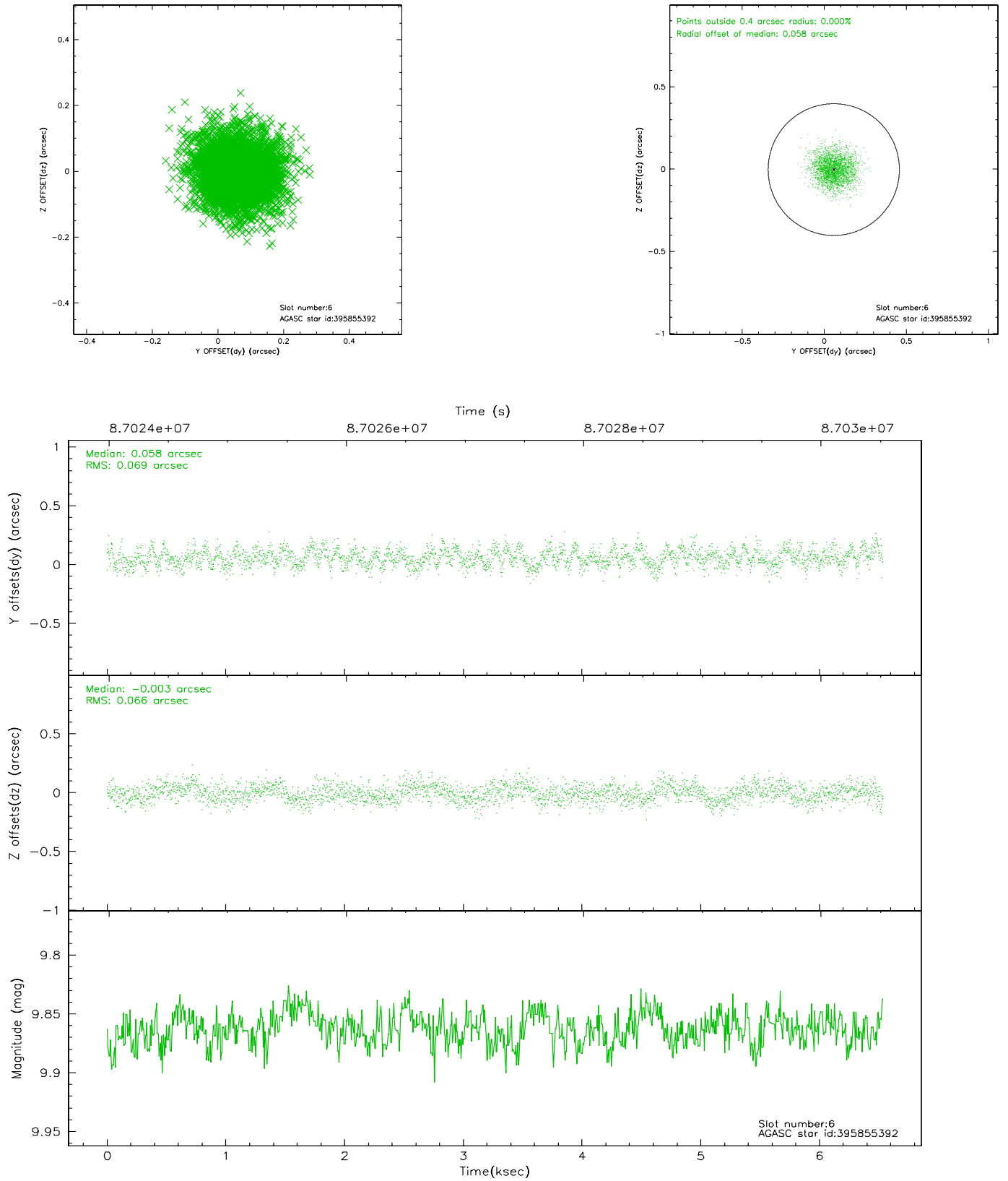
## 2.4.2 Slot 4



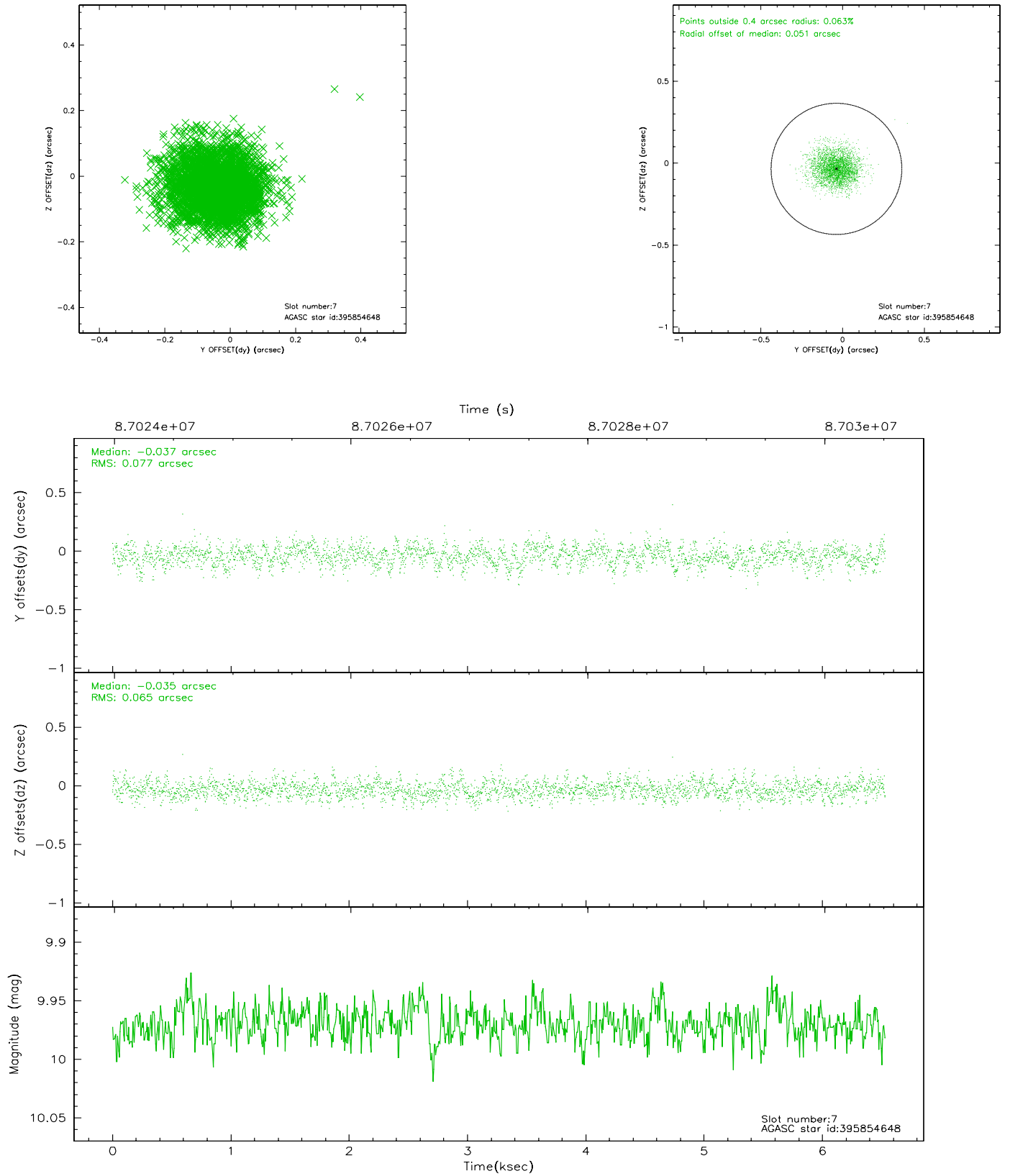
### 2.4.3 Slot 5



## 2.4.4 Slot 6

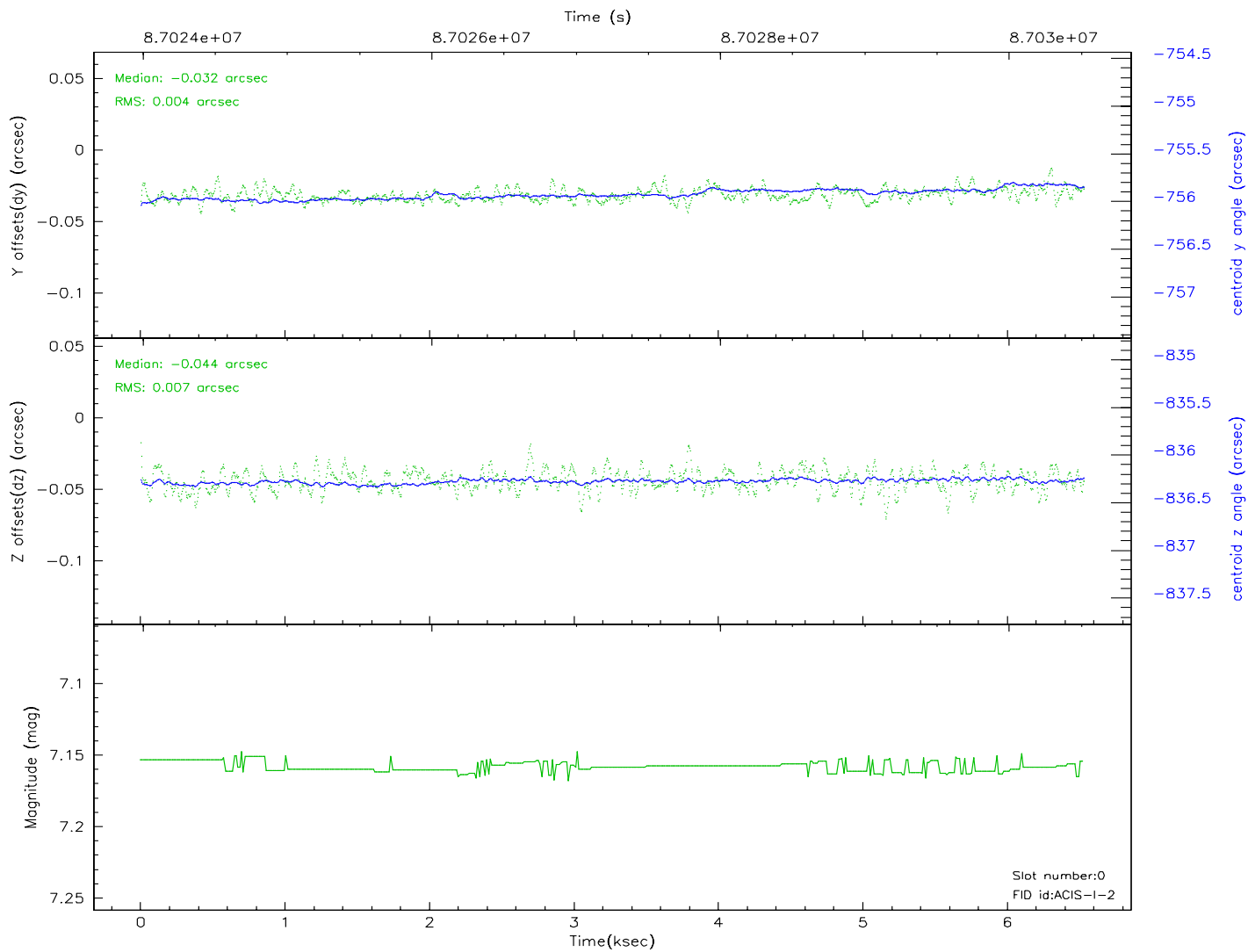
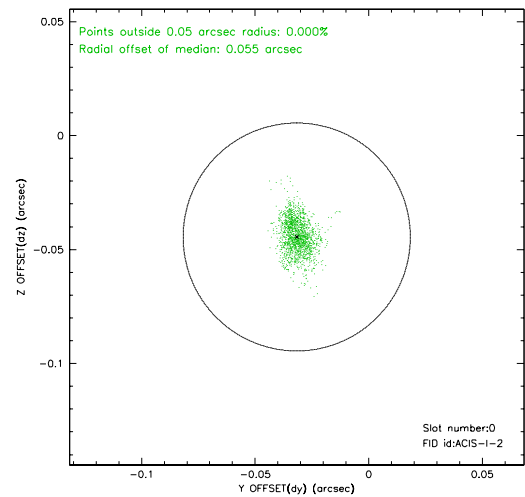
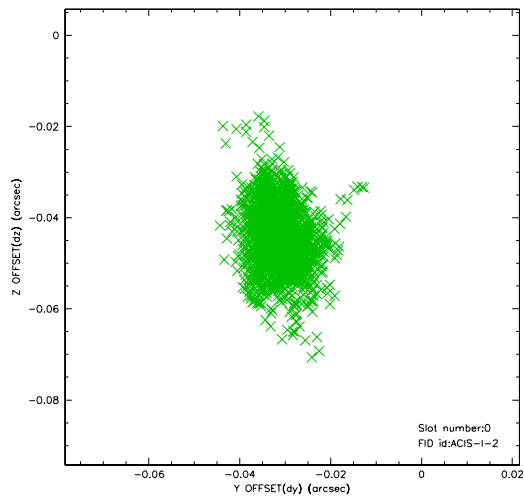


## 2.4.5 Slot 7

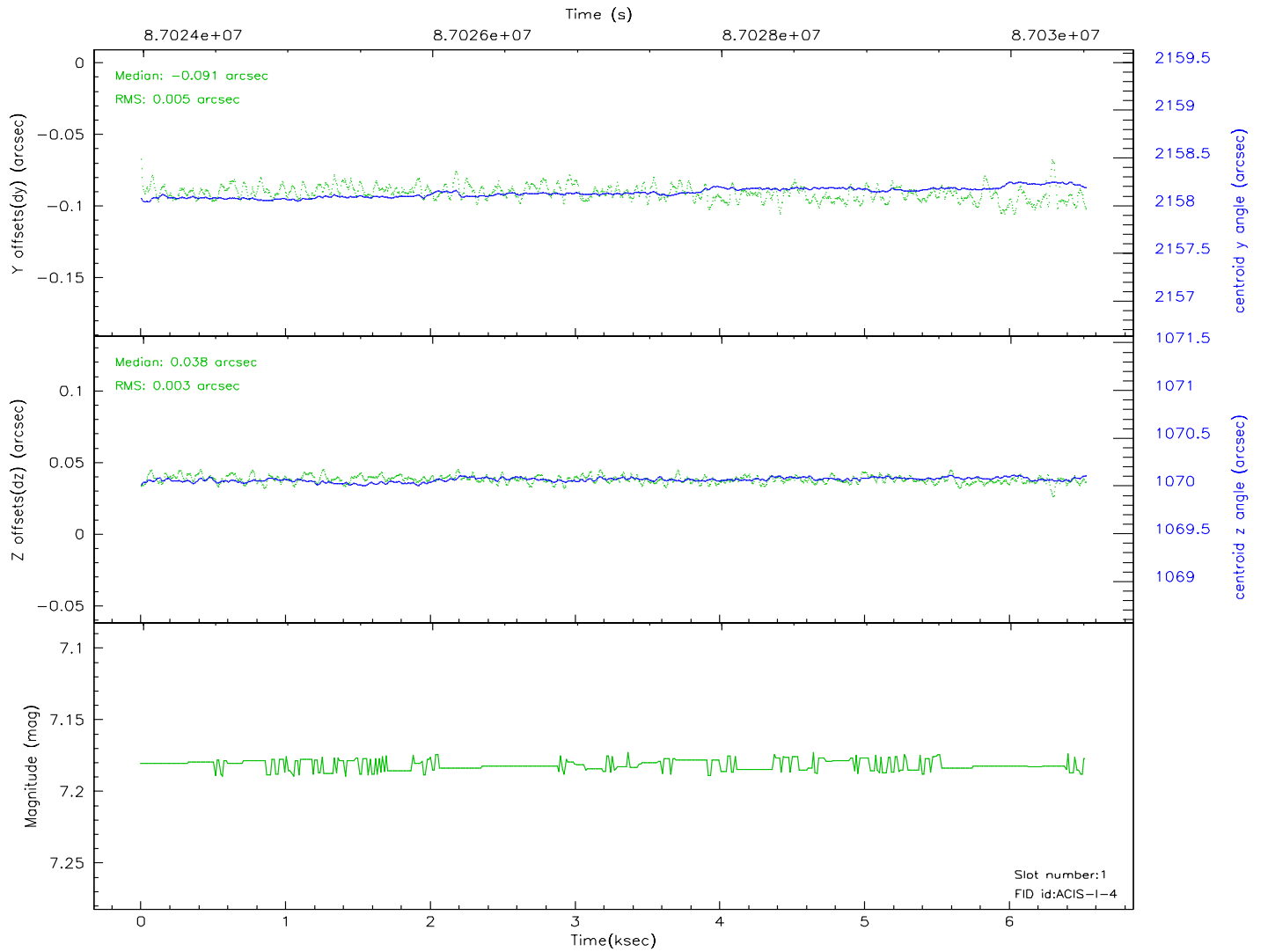
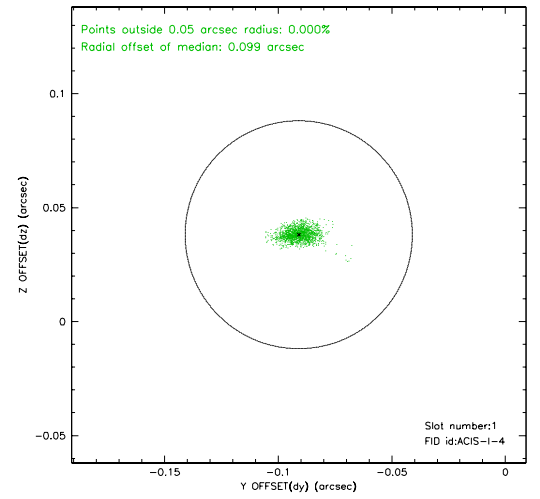
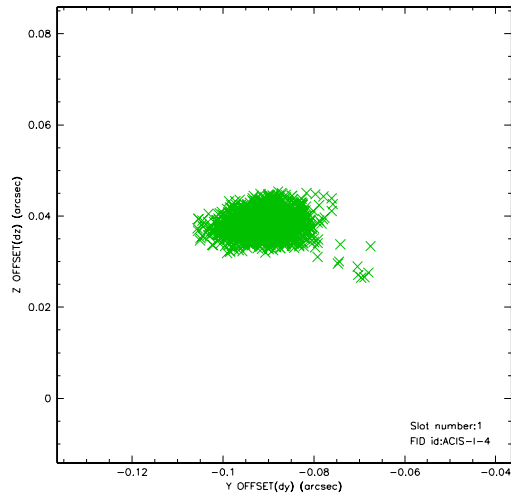


## 2.5 FID Slots

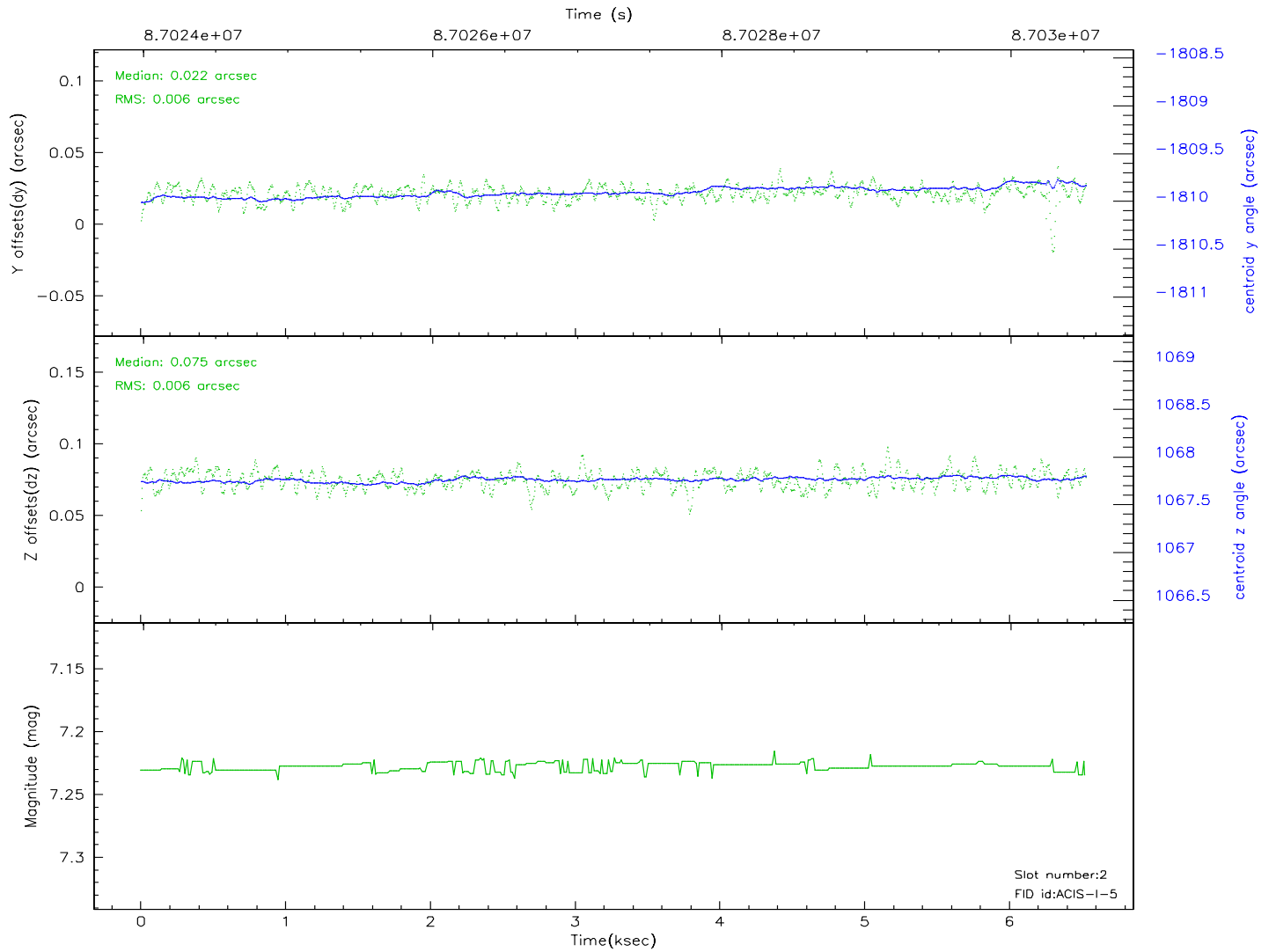
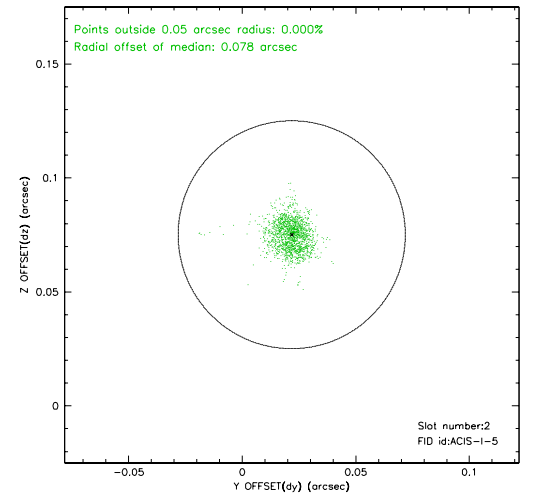
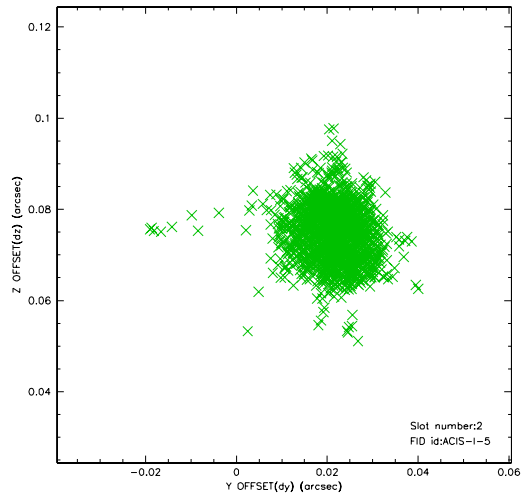
### 2.5.1 Slot 0



## 2.5.2 Slot 1

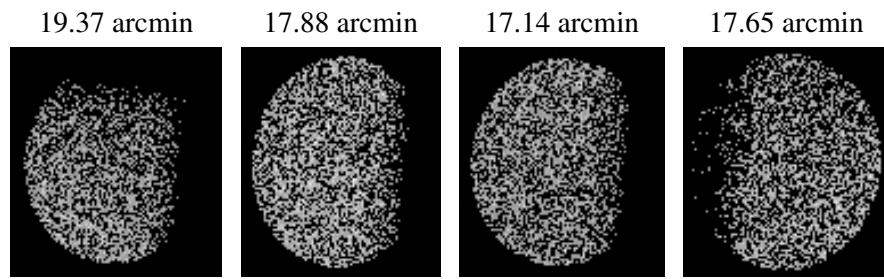


## 2.5.3 Slot 2





### 3 Point Sources



## A Summary

### A.1 Status

V&V Scientist	Beth Sundheim
V&V Date (YYYY-MM-DD)	2007.06.11
V&V Edition	1
V&V Disposition and Status	OK
V&V Charge Time	5.651

### A.2 Comments