

V&V Reference Report

L2 ASCDS Version : 8.4.4

Observation 9168 - L2 Version 2
Chandra X-Ray Center

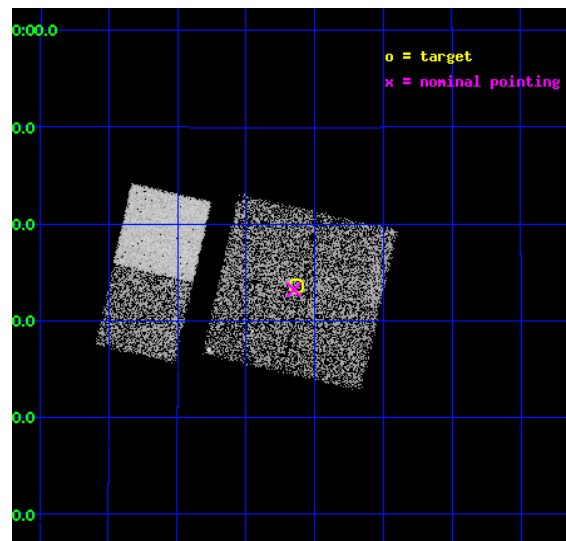
L2 Processing Date : May 8 2012

Contents

1	Front	2
2	OBI	3
2.1	OBI	3
2.1.1	Images	3
2.1.2	Bias	3
2.1.3	Parameters	4
2.1.4	Events	4
2.2	Compared Parameters	5
2.3	Aspect	6
2.4	Star Slots	9
2.4.1	Slot 3	9
2.4.2	Slot 4	10
2.4.3	Slot 5	11
2.4.4	Slot 6	12
2.4.5	Slot 7	13
2.5	FID Slots	14
2.5.1	Slot 0	14
2.5.2	Slot 1	15
2.5.3	Slot 2	16
A	Summary	17
A.1	Status	17
A.2	Comments	17

1 Front

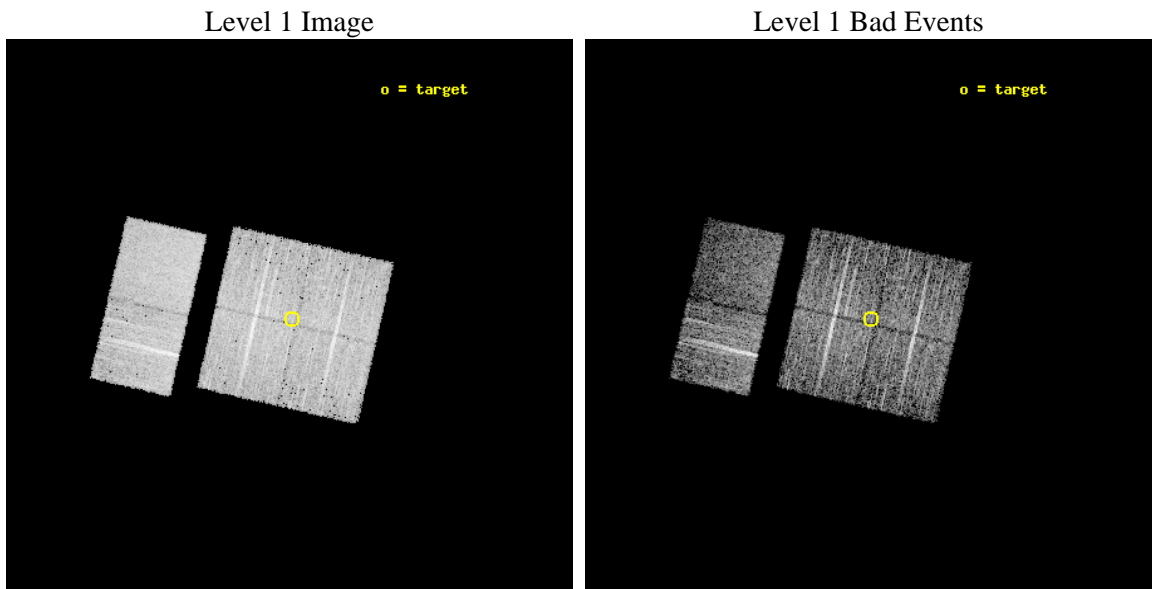
seq_num	701610	Sequence number
obs_id	9168	Observation id
title	Chandra follow-up observations of Swift/BAT unidentified sources: Searching for obscured type II quasars	Proposal title
observer	Dr. Peter Predehl	Principal investigator
object	J0517.1+1633	Source name
dtcycle	0	
cycle	P	events from which exps? Prim/Second/Both
ra_targ	79.28375	Observer's specified target RA [deg]
dec_targ	16.5605	Observer's specified target Dec [deg]
ra_nom	79.288111992156	Nominal RA [deg]
dec_nom	16.553451830048	Nominal Dec [deg]
roll_nom	282.9297813801	Nominal Roll [deg]
revision	2	Processing version of data
ontime	5041.7828781605	Sum of GTIs [s]
livetime	4977.94078756	Livetime [s]
ontime0	5041.6597581506	Sum of GTIs [s]
ontime1	5041.7007981539	Sum of GTIs [s]
ontime2	5041.7418381572	Sum of GTIs [s]
ontime3	5041.7828781605	Sum of GTIs [s]
ontime6	5041.8649581671	Sum of GTIs [s]
ontime7	5041.8239181638	Sum of GTIs [s]
l2events	36806	Number of level 2 events



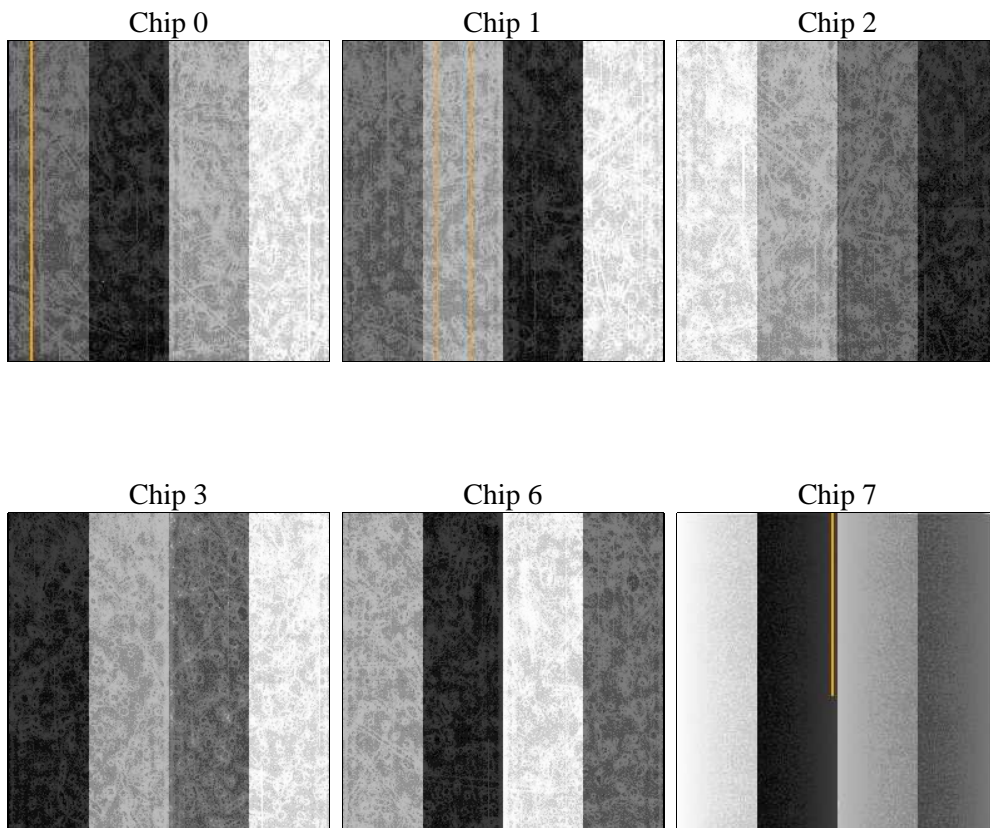
2 OBI

2.1 OBI

2.1.1 Images



2.1.2 Bias



2.1.3 Parameters

obi_num	0	Obi number	sched_exp_time	5000.000000	[s] Scheduled observation exposure time
ascdsver	8.4.4	Processing system revision	ontime	5041.7828781605	Sum of GTIs [s]
caldsver	4.4.9	 	ontime0	5041.6597581506	Sum of GTIs [s]
date	2012-05-08T03:02:31	Date and time of file creation	ontime1	5041.7007981539	Sum of GTIs [s]
revision	2	Processing version of data	ontime2	5041.7418381572	Sum of GTIs [s]
			ontime3	5041.7828781605	Sum of GTIs [s]
			ontime6	5041.8649581671	Sum of GTIs [s]
			ontime7	5041.8239181638	Sum of GTIs [s]
			l1events	239546	Number of level 1 events

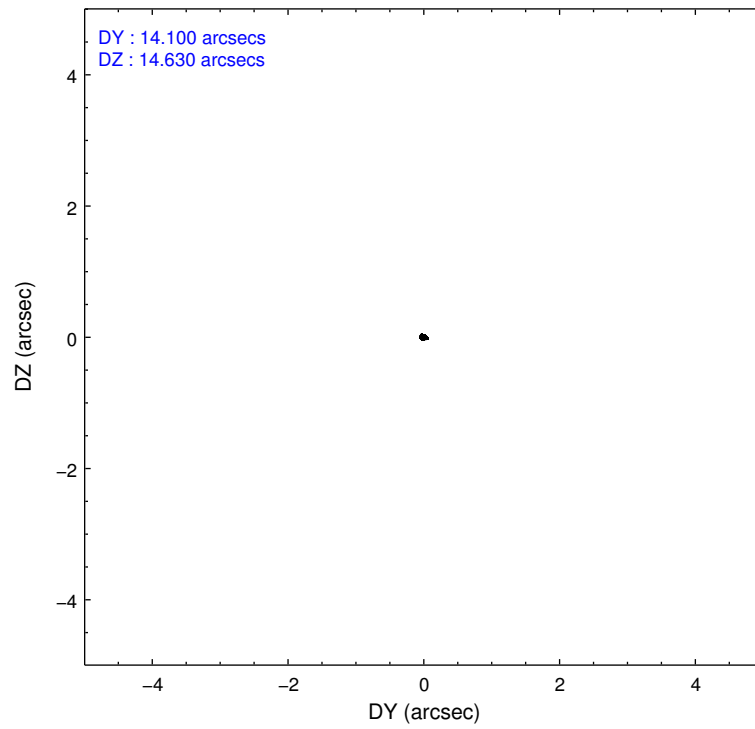
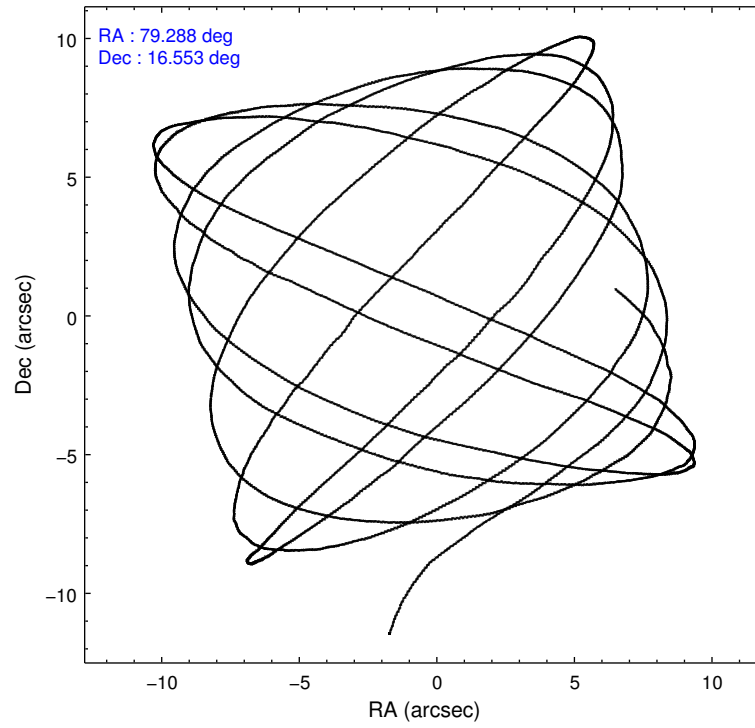
2.1.4 Events

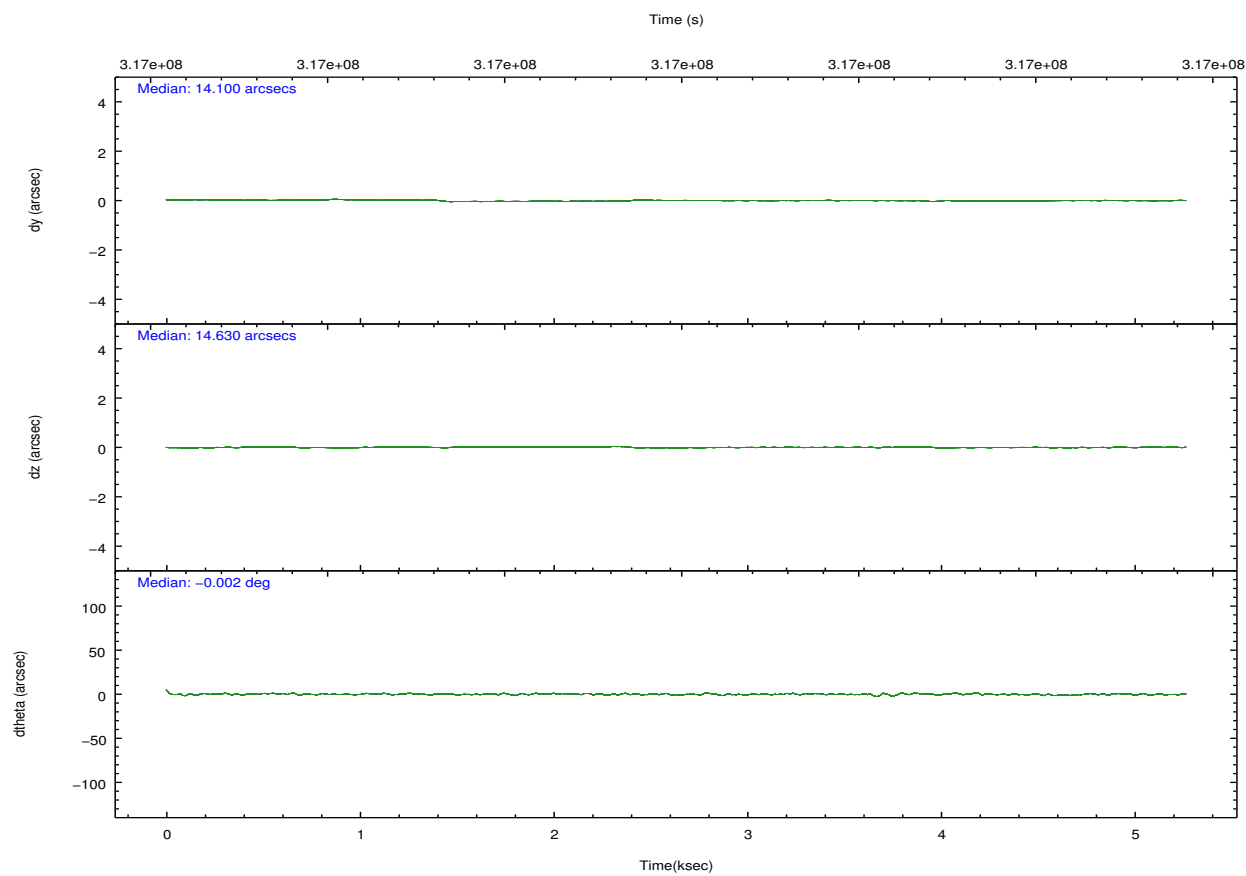
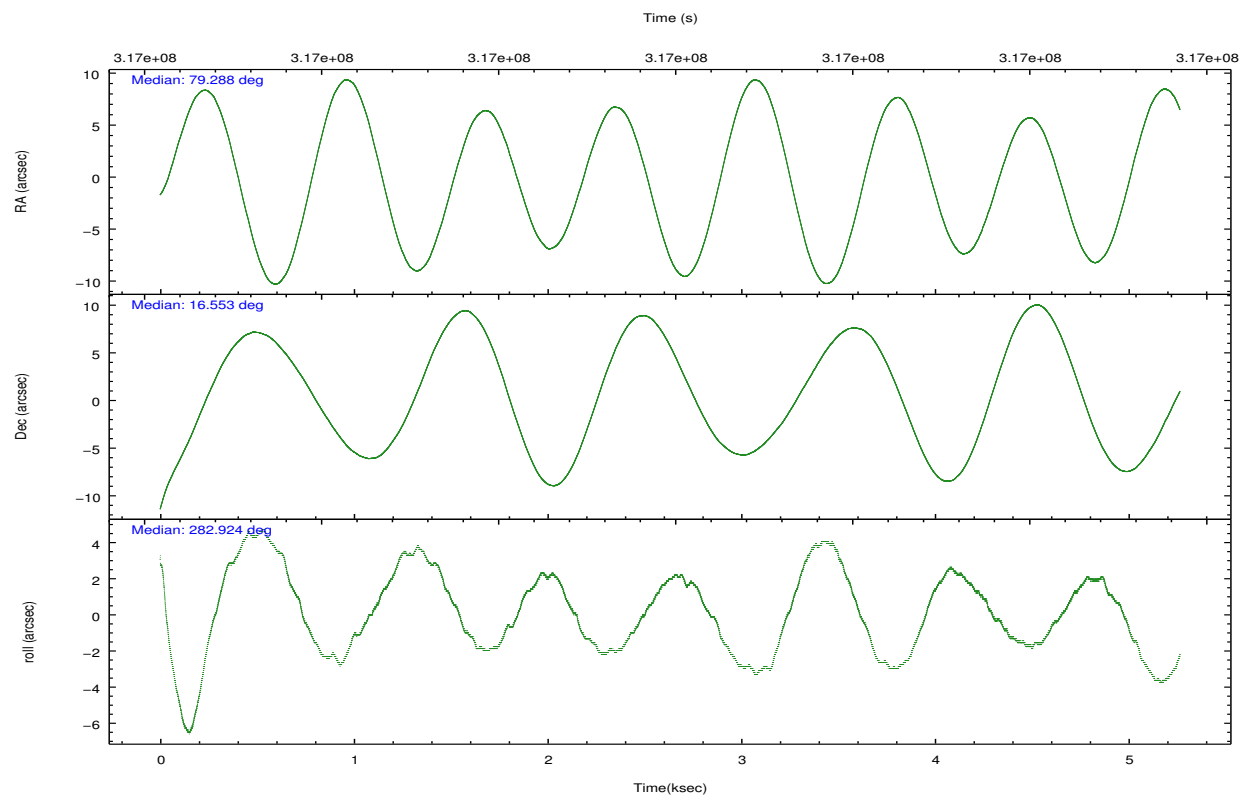
	ccd 0	ccd 1	ccd 2	ccd 3	ccd 6	ccd 7		ccd 0	ccd 1	ccd 2	ccd 3	ccd 6	ccd 7
level 1 events	35614	38116	40313	38351	42414	44738	grade 0 events	1351	1670	1495	1362	1513	1937
rejected events	31615	33581	36356	34524	38058	24499		3%	4%	3%	3%	3%	4%
rejected %	88%	88%	90%	90%	89%	54%	grade 1 events	20	22	30	28	21	61
								0%	0%	0%	0%	0%	0%
							grade 2 events	960	1041	879	812	973	4123
								2%	2%	2%	2%	2%	9%
							grade 3 events	492	464	413	456	471	1853
								1%	1%	1%	1%	1%	4%
							grade 4 events	450	459	440	418	455	1806
								1%	1%	1%	1%	1%	4%
							grade 5 events	1383	1504	1334	1576	1722	4717
								3%	3%	3%	4%	4%	10%
							grade 6 events	750	910	732	781	948	10541
								2%	2%	1%	2%	2%	23%
							grade 7 events	30208	32046	34990	32918	36311	19700
								84%	84%	86%	85%	85%	44%

2.2 Compared Parameters

Parameter	Planned	Actual	Parameter	Planned	Actual
Instrument	ACIS	ACIS	Obspar format version number	7	7
Detector	ACIS-012367	ACIS-012367	Obspar file type	PREDICTED	ACTUAL
Grating	NONE	NONE	Obspar update status	NONE	UPDATED
Data mode	FAINT	FAINT	CCD I0 on	Y	Y
Observation mode	POINTING	POINTING	CCD I1 on	Y	Y
[deg] Pointing RA	79.268367	79.28811199215551	CCD I2 on	Y	Y
[deg] Pointing Dec	16.573577	16.55345183004753	CCD I3 on	Y	Y
[deg] Pointing Roll	282.726703	282.9297813801027	CCD S0 on	N	N
[mm] SIM focus pos	-0.782348	-0.7809083437167272	CCD S1 on	N	N
[mm] SIM defocus	0	0.001439871863259334	CCD S2 on	O2	Y
[mm] SIM translation stage pos	-233.592463	-233.5874344608287	CCD S3 on	O1	Y
[mm] SIM translation stage offset	0	-0.005018542100998502	CCD S4 on	N	N
[s] Observation start time (MET)	316997606.184000	316996501.72378	CCD S5 on	N	N
Observation start date	2008-01-17T22:52:21	2008-01-17T22:35:01	Number of optional ACIS chips dropped	0	0
[s] Observation end time (MET)	317002606.184000	317003240.0741	On-chip summing requested	N	N
Observation end date	2008-01-18T00:15:41	2008-01-18T00:27:20	Subarray requested	NONE	NONE
Read mode	TIMED	TIMED	Alternating exposures requested	N	N
			[s] Primary exposure time	0.000000	3.2

2.3 Aspect



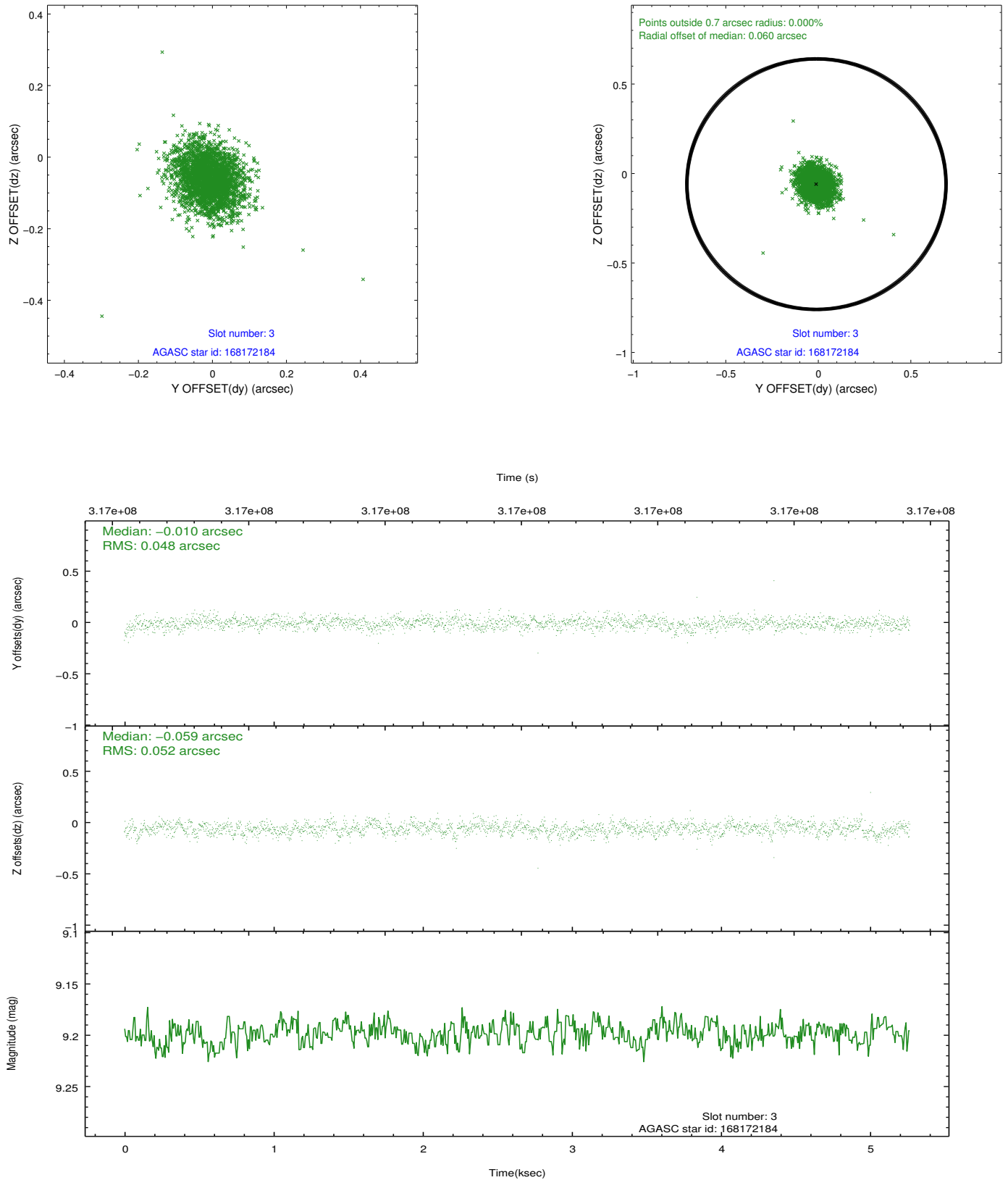


Slot Statistics

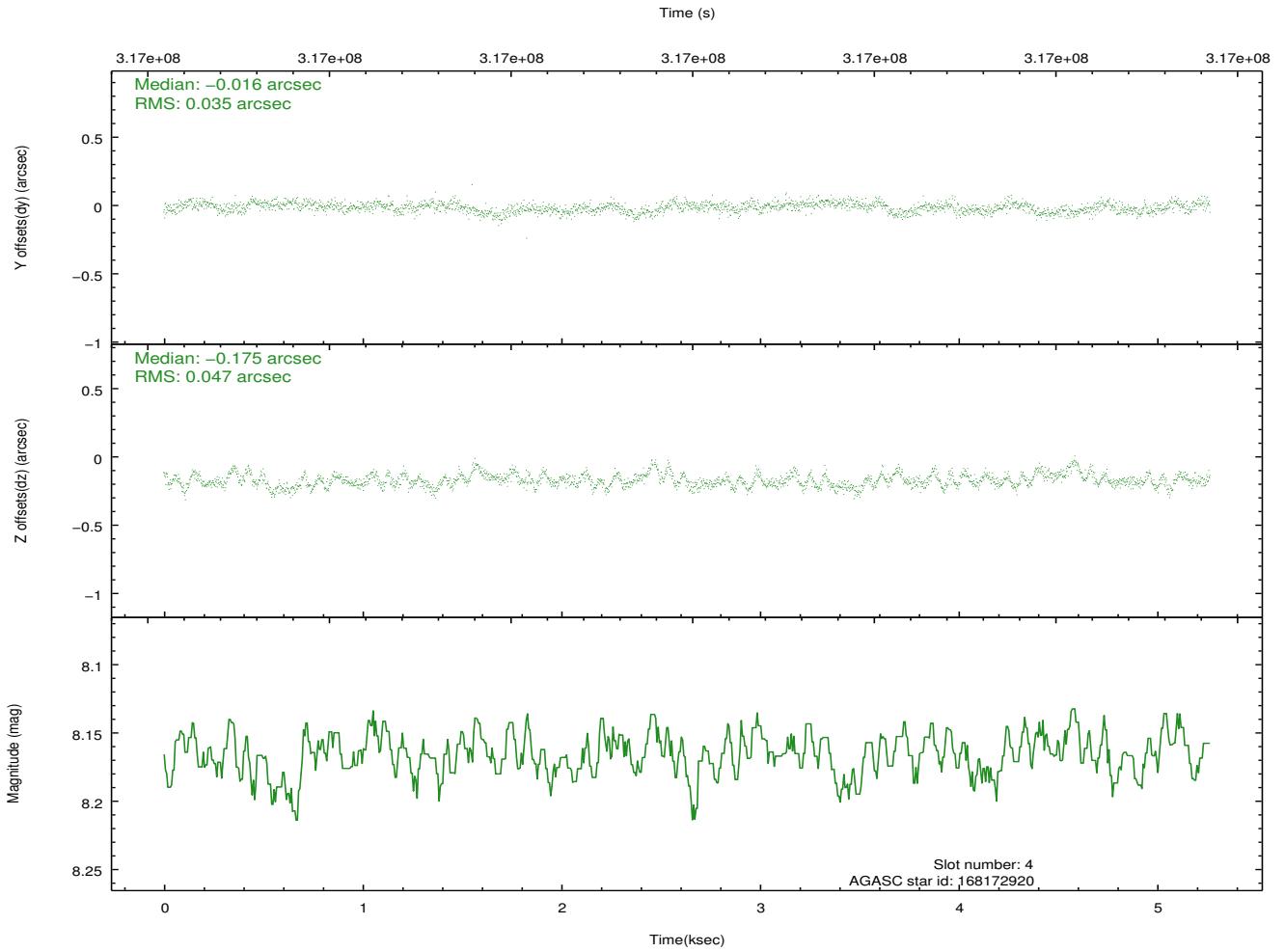
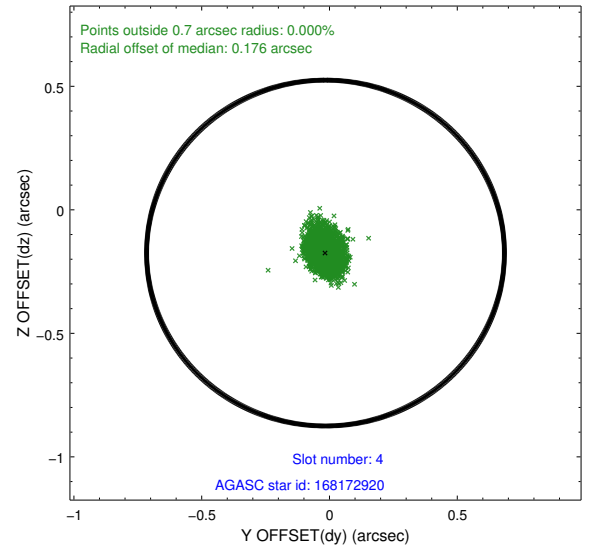
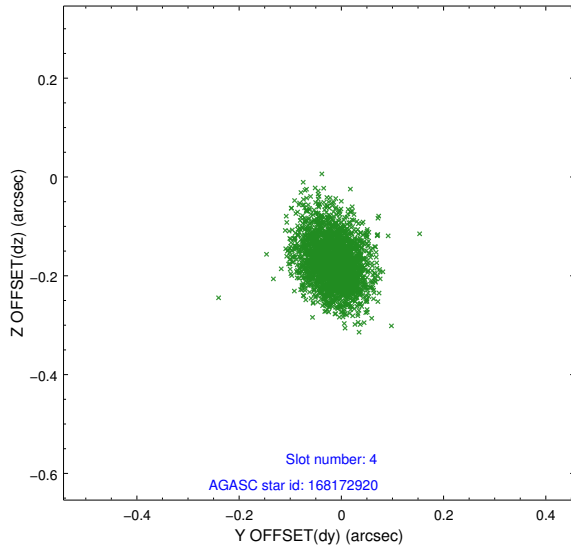
slot	status	id	mag	n_pts	med_dy	med_dz	dr1	dr2	ra	dec	mean_y	mean_z
0	FID	ACIS-I-2	7.13	1285	-0.094	-0.073	0.009	0.015	0.000000	0.000000	-768.88	-844.65
1	FID	ACIS-I-4	7.15	1285	0.215	0.076	0.006	0.010	0.000000	0.000000	2144.96	1061.08
2	FID	ACIS-I-5	7.22	1285	-0.223	0.066	0.009	0.015	0.000000	0.000000	-1821.36	1060.24
3	GUIDE	168172184	9.20	2570	-0.010	-0.059	0.073	0.123	79.432658	16.696382	-306.31	649.96
4	GUIDE	168172920	8.17	2565	-0.016	-0.175	0.061	0.102	79.442923	16.449564	567.81	489.52
5	GUIDE	168173376	7.30	2570	0.200	0.089	0.068	0.106	79.273374	16.351594	783.76	-159.03
6	GUIDE	168173472	7.87	2569	-0.094	0.067	0.058	0.090	78.583856	16.678845	-893.22	-2218.49
7	GUIDE	168173904	9.15	2566	-0.077	0.076	0.087	0.138	79.871784	16.367969	1177.45	1869.73

2.4 Star Slots

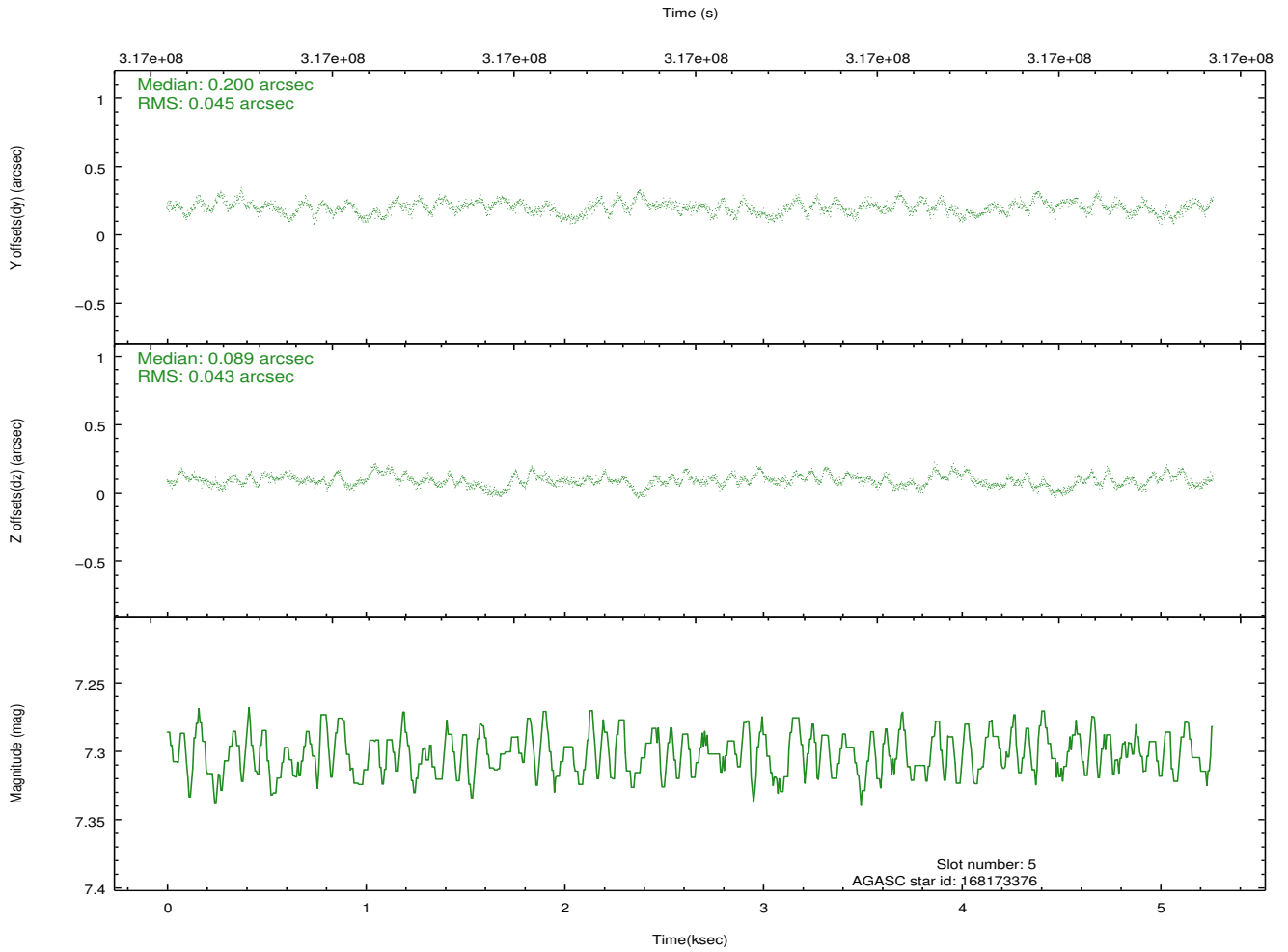
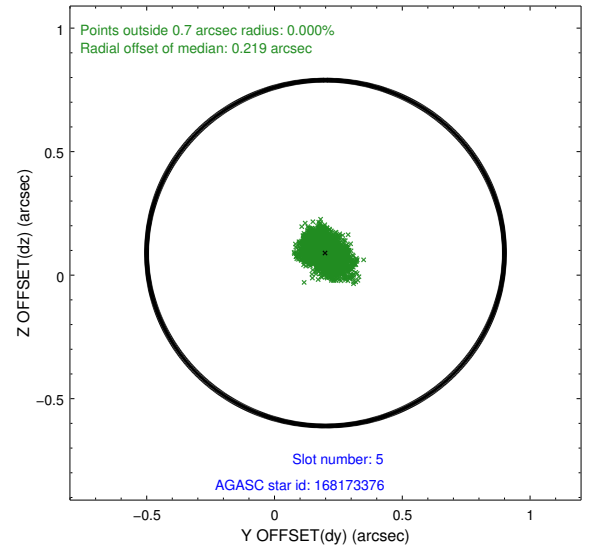
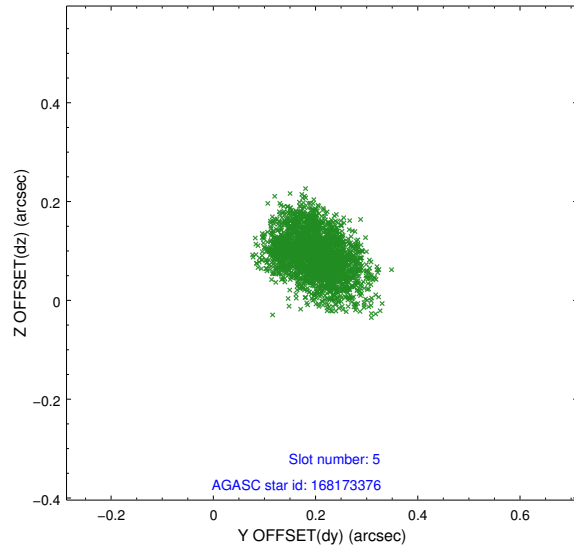
2.4.1 Slot 3



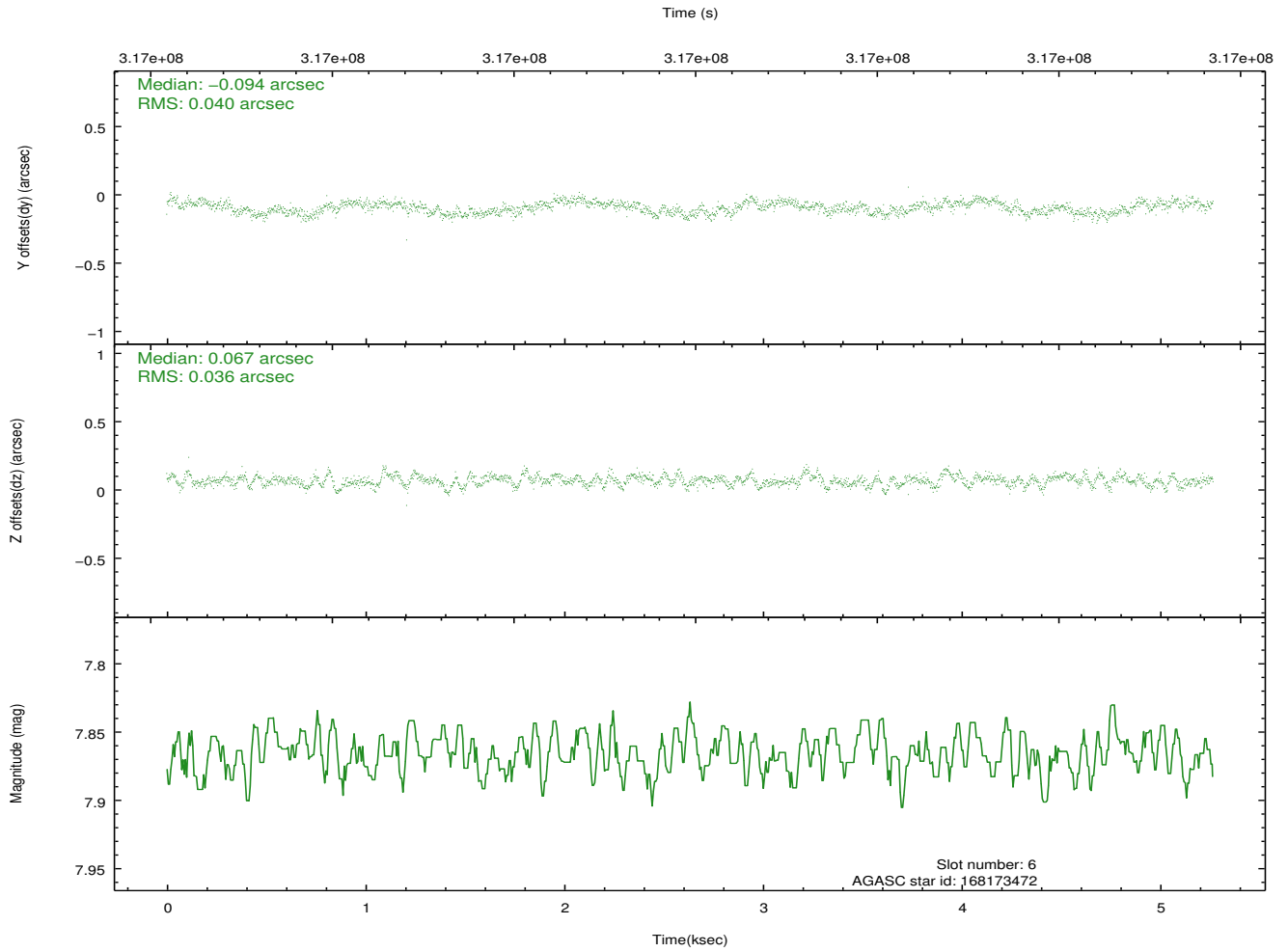
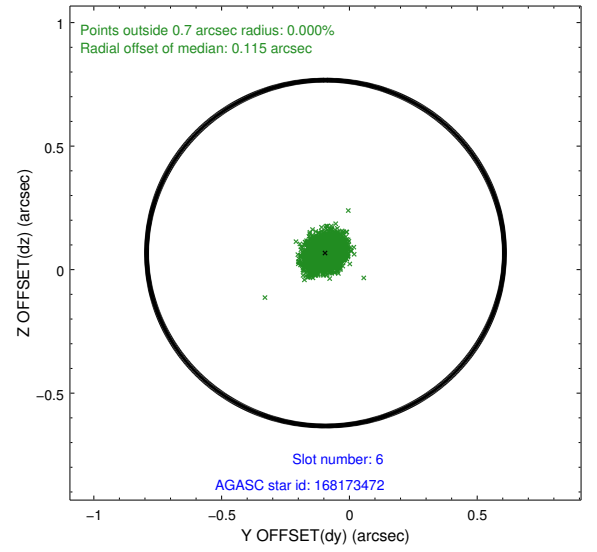
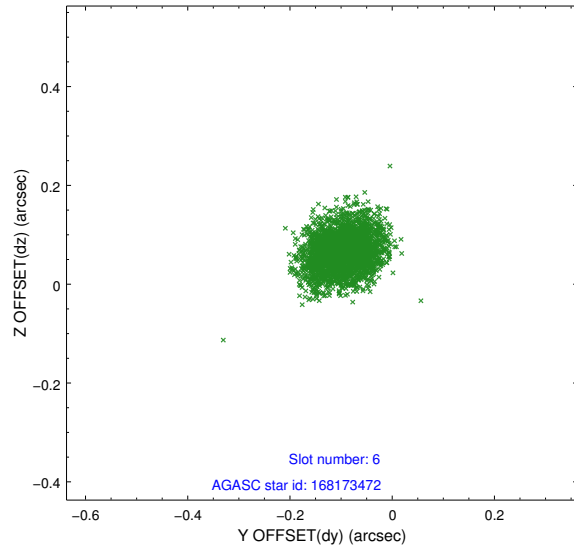
2.4.2 Slot 4



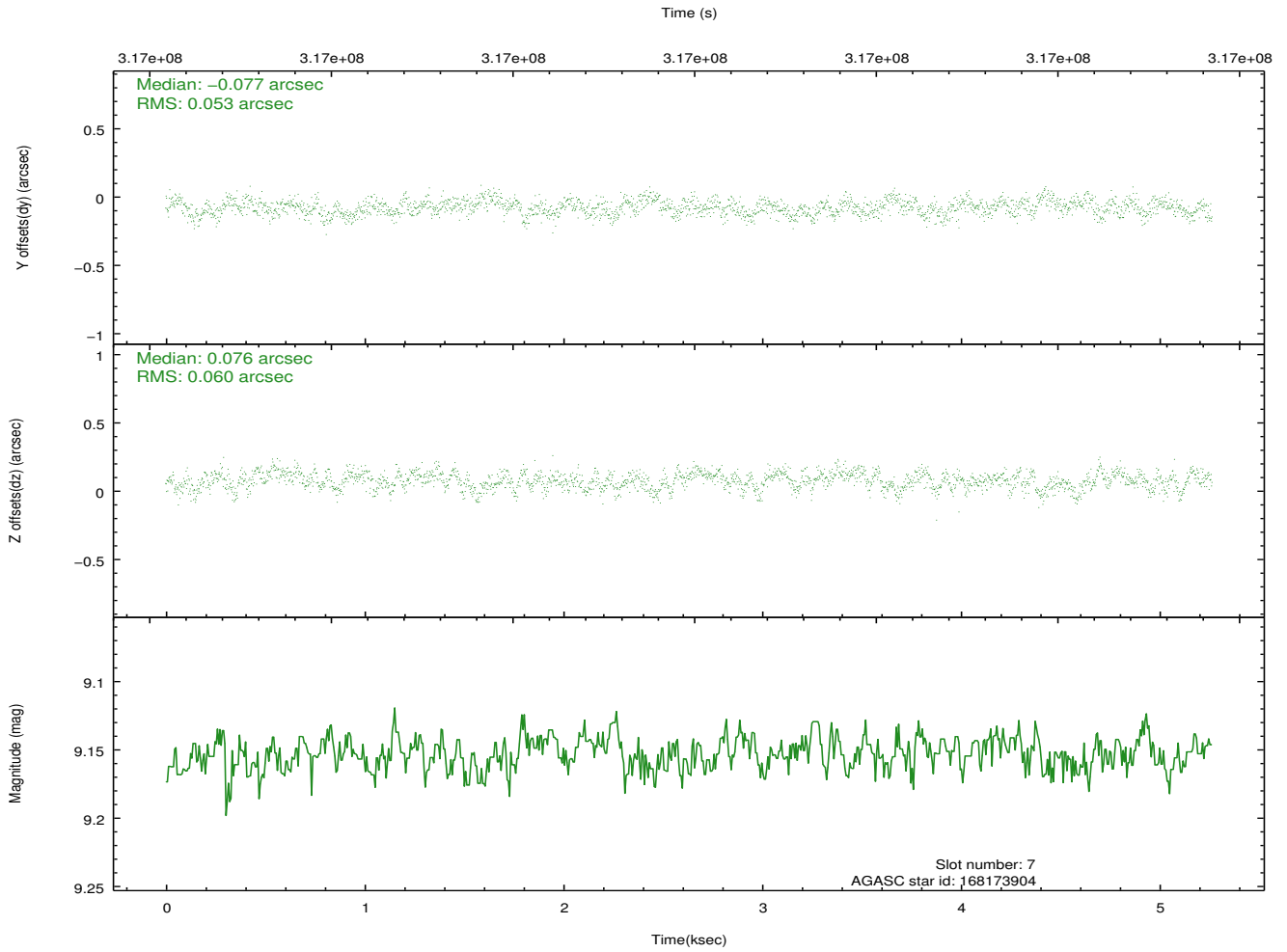
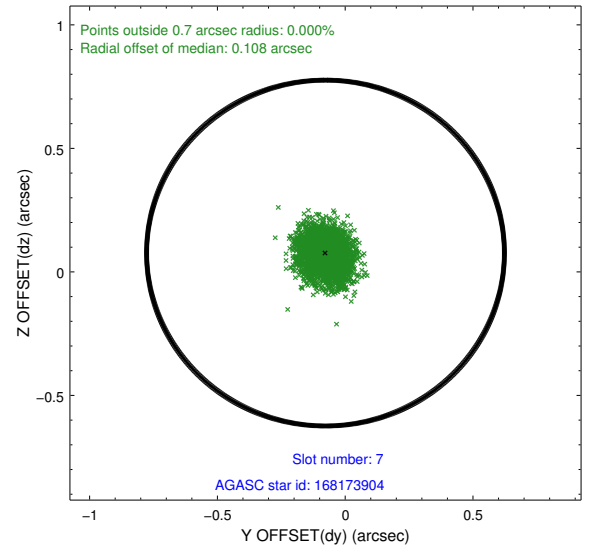
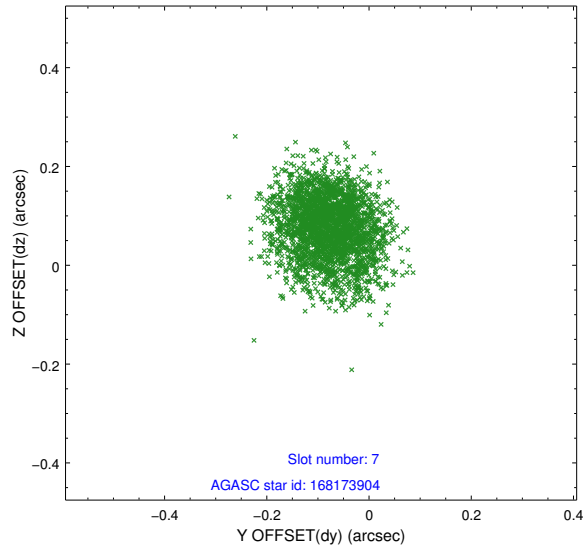
2.4.3 Slot 5



2.4.4 Slot 6

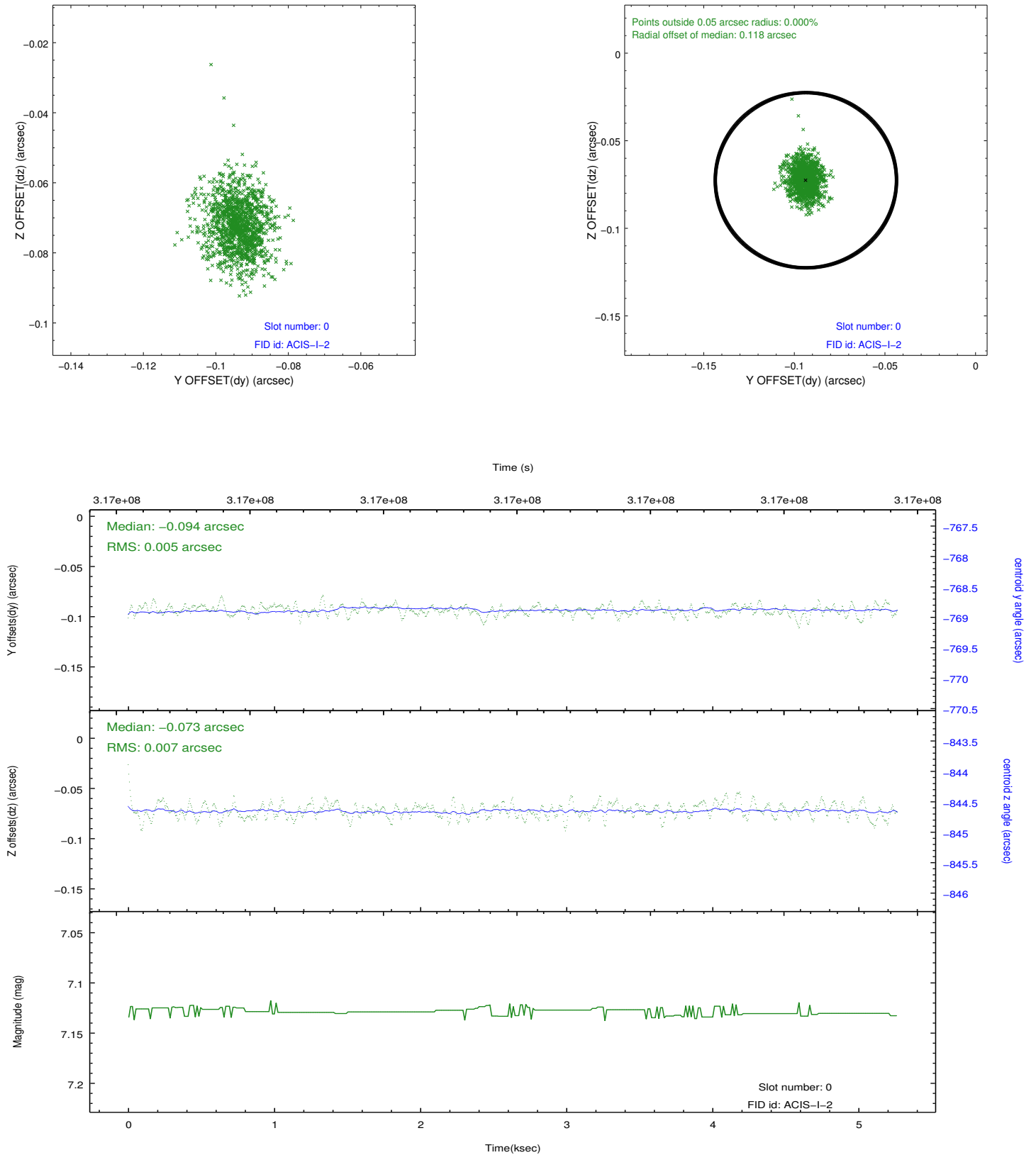


2.4.5 Slot 7

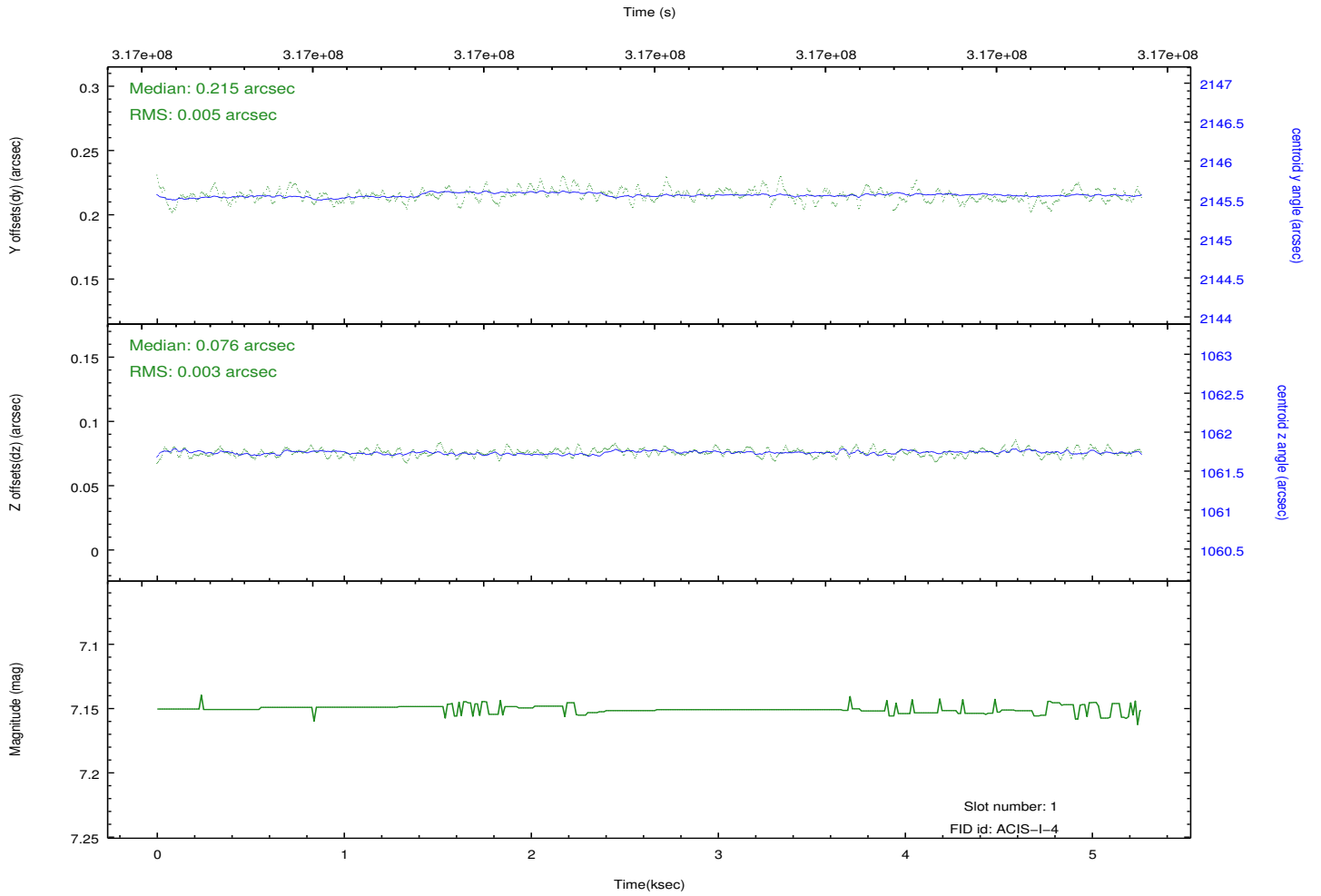
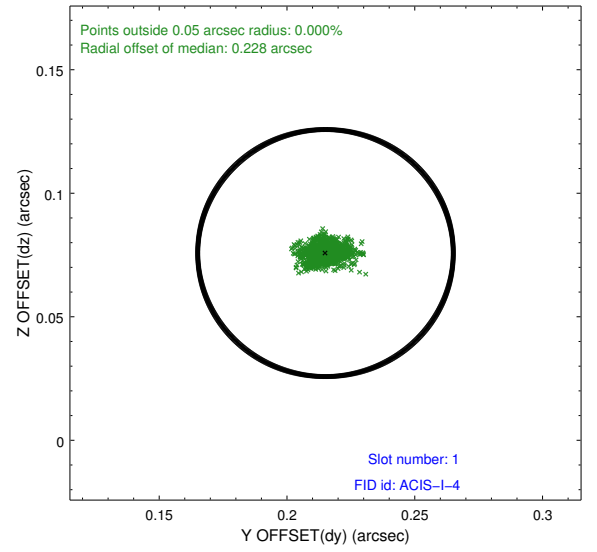
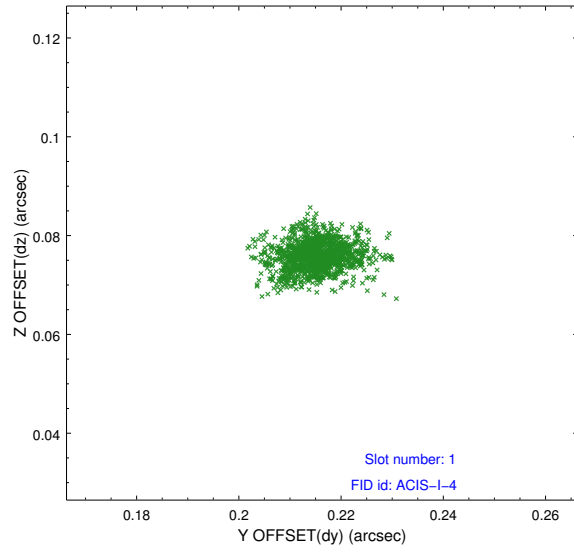


2.5 FID Slots

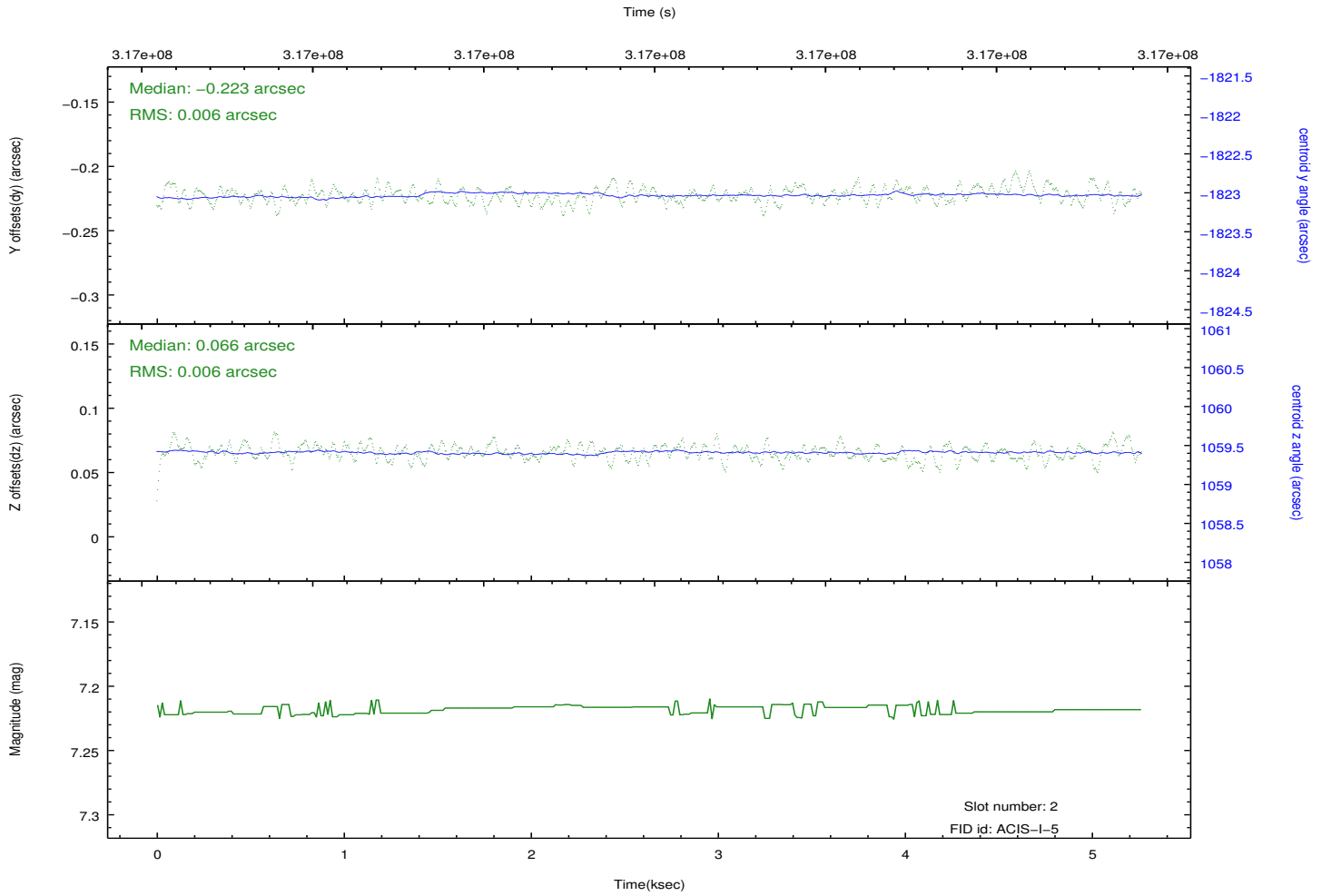
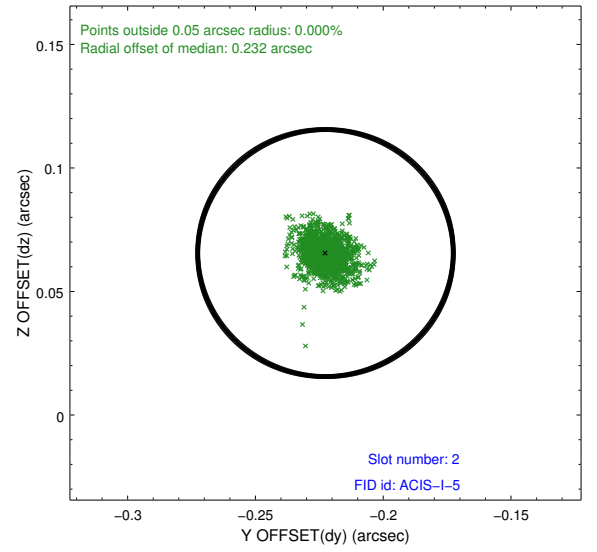
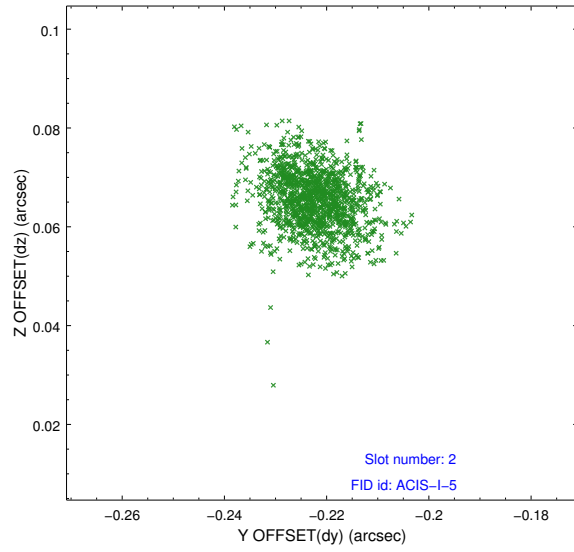
2.5.1 Slot 0



2.5.2 Slot 1



2.5.3 Slot 2



A Summary

A.1 Status

V&V Scientist	Jen Lauer
V&V Date (YYYY-MM-DD)	2012.05.10
V&V Edition	1
V&V Disposition and Status	OK
V&V Charge Time	5.04319998

A.2 Comments