

V&V Reference Report

L2 ASCDS Version : 8.4.4

Observation 9058 - L2 Version 2
Chandra X-Ray Center

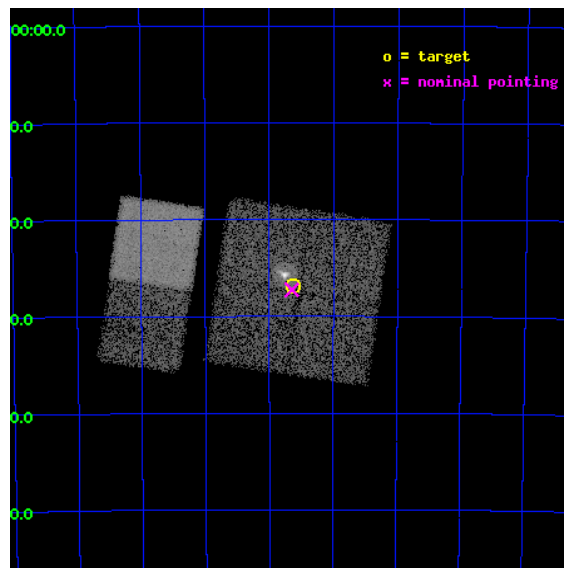
L2 Processing Date : May 17 2012

Contents

1	Front	2
2	OBI	3
2.1	OBI	3
2.1.1	Images	3
2.1.2	Bias	3
2.1.3	Parameters	4
2.1.4	Events	4
2.2	Compared Parameters	5
2.3	Aspect	6
2.4	Star Slots	9
2.4.1	Slot 3	9
2.4.2	Slot 4	10
2.4.3	Slot 5	11
2.4.4	Slot 6	12
2.4.5	Slot 7	13
2.5	FID Slots	14
2.5.1	Slot 0	14
2.5.2	Slot 1	15
2.5.3	Slot 2	16
A	Summary	17
A.1	Status	17
A.2	Comments	17

1 Front

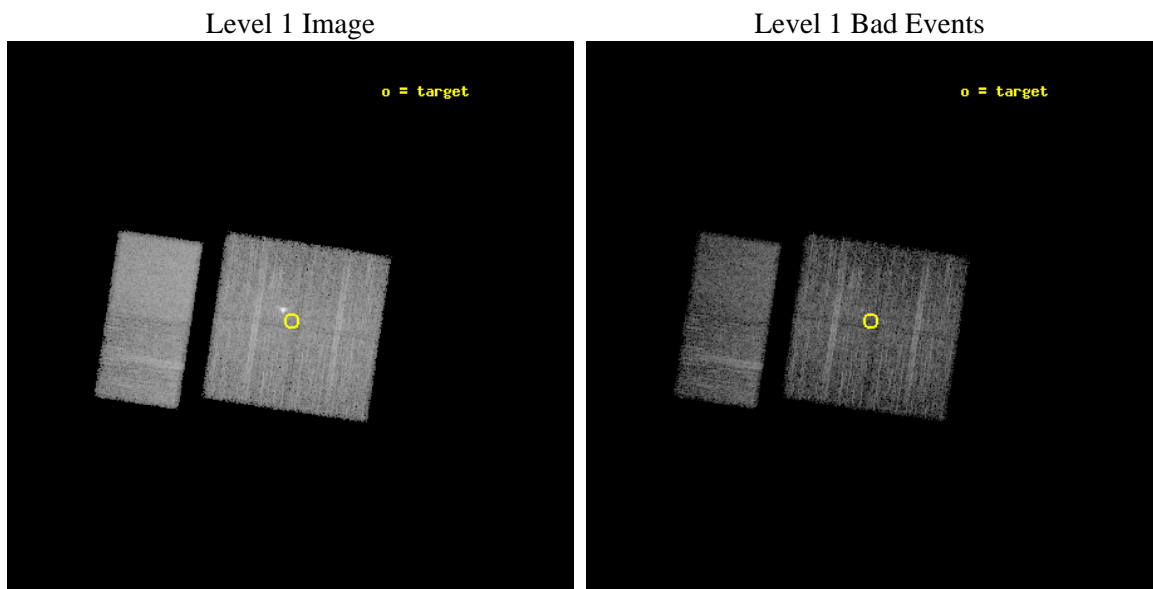
seq_num	400909	Sequence number
obs_id	9058	Observation id
title	Localization and Spectra of INTEGRAL-Selected Sources in the Galactic Plane	Proposal title
observer	Dr. John Tomsick	Principal investigator
object	IGR J14003-6326	Source name
dtcycle	0	
cycle	P	events from which exps? Prim/Second/Both
ra_targ	210.154167	Observer's specified target RA [deg]
dec_targ	-63.446944	Observer's specified target Dec [deg]
ra_nom	210.16164041759	Nominal RA [deg]
dec_nom	-63.454468399665	Nominal Dec [deg]
roll_nom	278.53189767828	Nominal Roll [deg]
revision	2	Processing version of data
ontime	5142.3999809027	Sum of GTIs [s]
livetime	5077.283815963	Livetime [s]
ontime0	5142.3999809027	Sum of GTIs [s]
ontime1	5142.3999809027	Sum of GTIs [s]
ontime2	5142.3999809027	Sum of GTIs [s]
ontime3	5142.3999809027	Sum of GTIs [s]
ontime6	5142.3999809027	Sum of GTIs [s]
ontime7	5142.3999809027	Sum of GTIs [s]
l2events	59250	Number of level 2 events



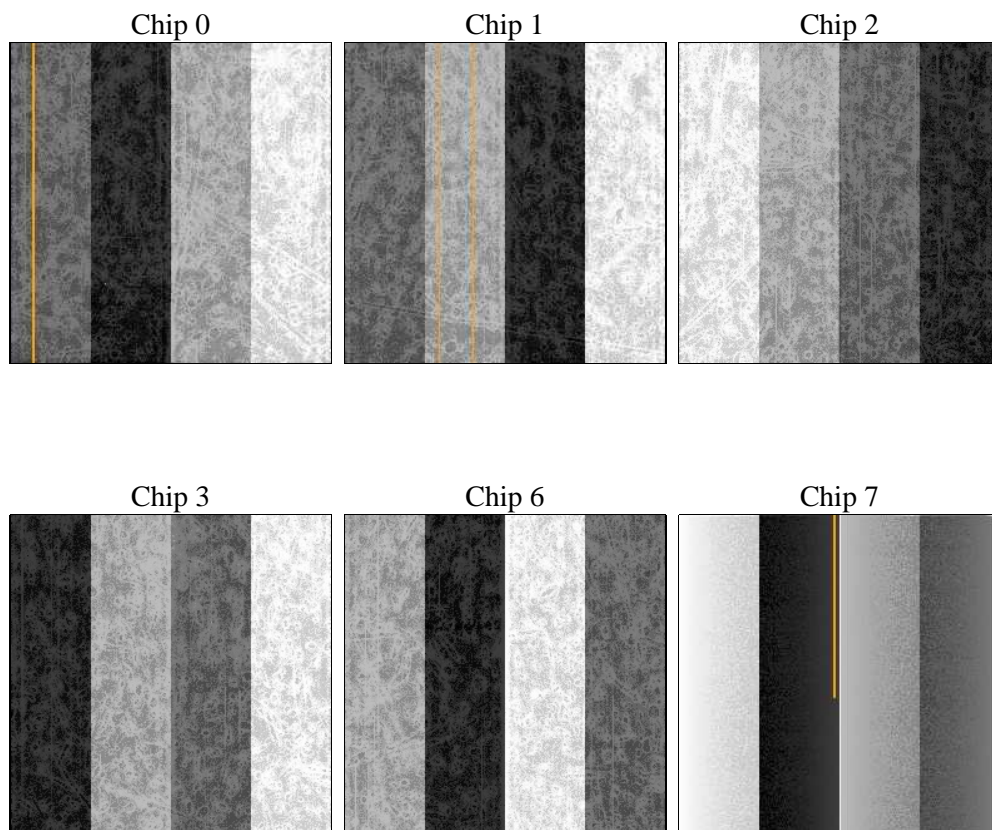
2 OBI

2.1 OBI

2.1.1 Images



2.1.2 Bias



2.1.3 Parameters

obi_num	0	Obi number	sched_exp_time	5000.000000	[s] Scheduled observation exposure time
ascdsver	8.4.4	Processing system revision	ontime	5142.3999809027	Sum of GTIs [s]
caldsver	4.4.9	 	ontime0	5142.3999809027	Sum of GTIs [s]
date	2012-05-17T03:53:42	Date and time of file creation	ontime1	5142.3999809027	Sum of GTIs [s]
revision	2	Processing version of data	ontime2	5142.3999809027	Sum of GTIs [s]
			ontime3	5142.3999809027	Sum of GTIs [s]
			ontime6	5142.3999809027	Sum of GTIs [s]
			ontime7	5142.3999809027	Sum of GTIs [s]
			l1events	338050	Number of level 1 events

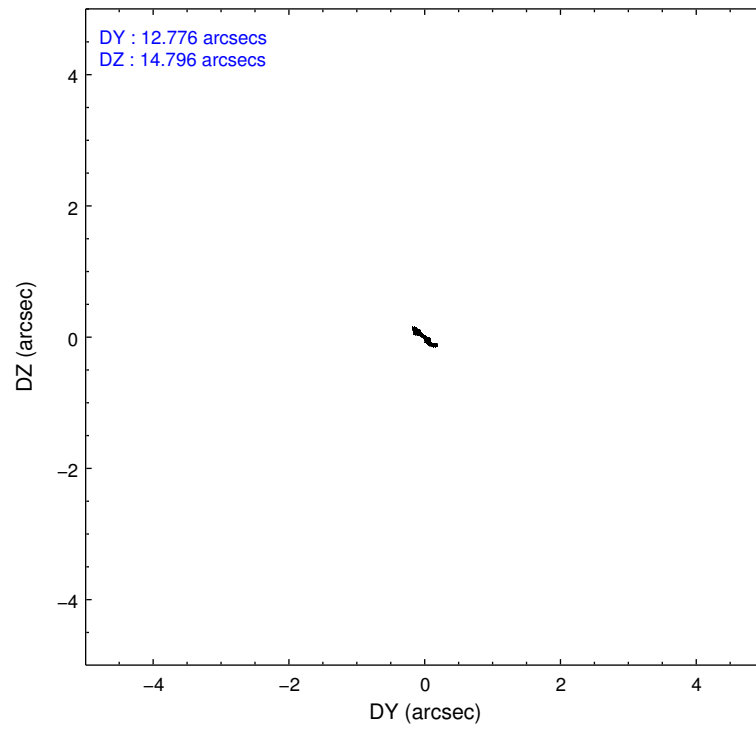
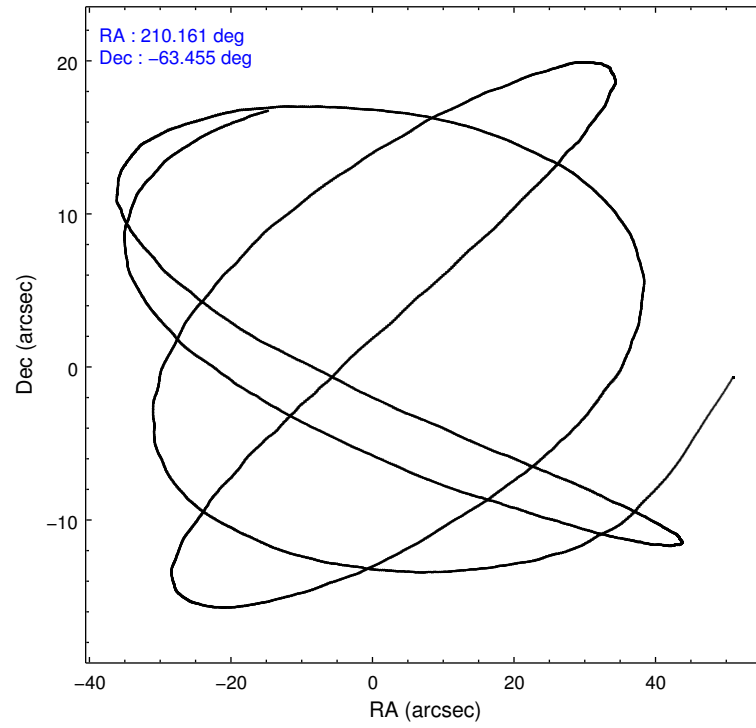
2.1.4 Events

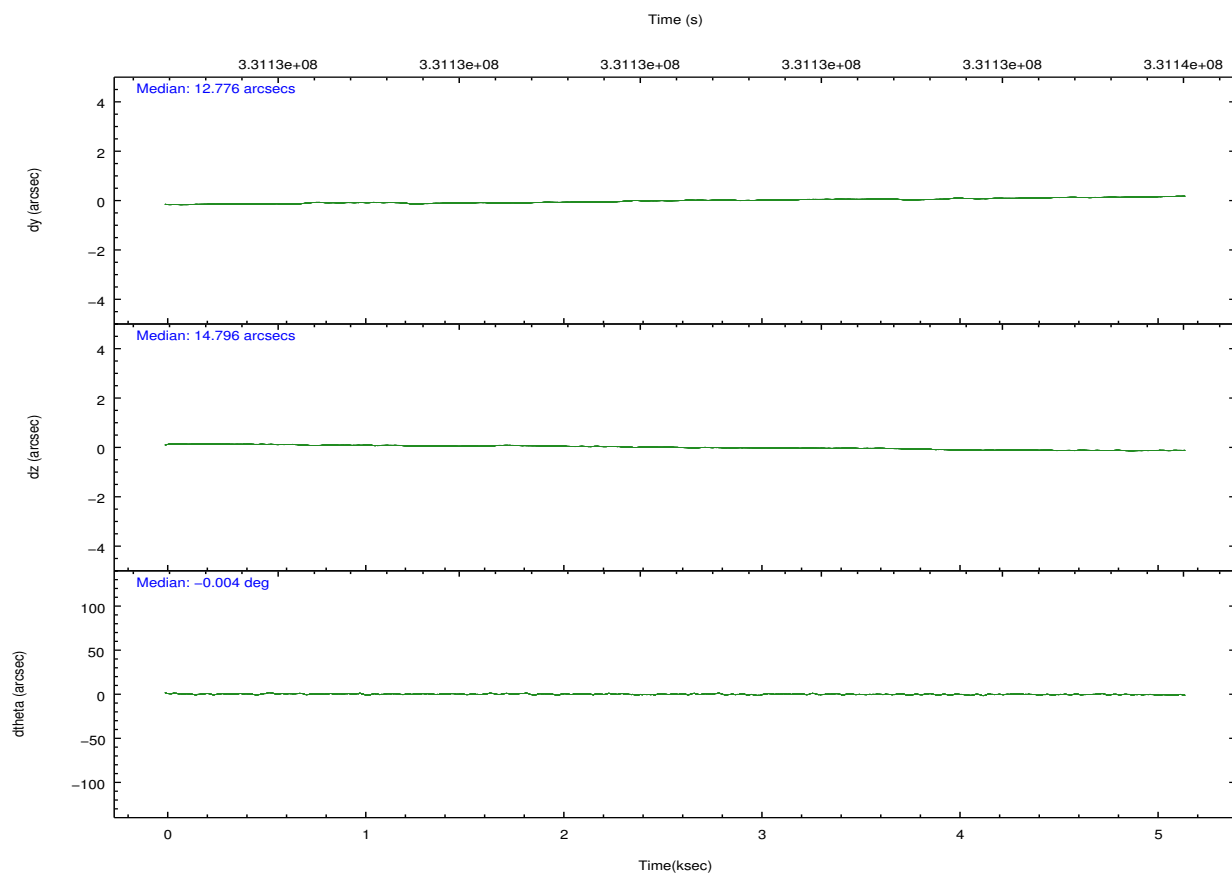
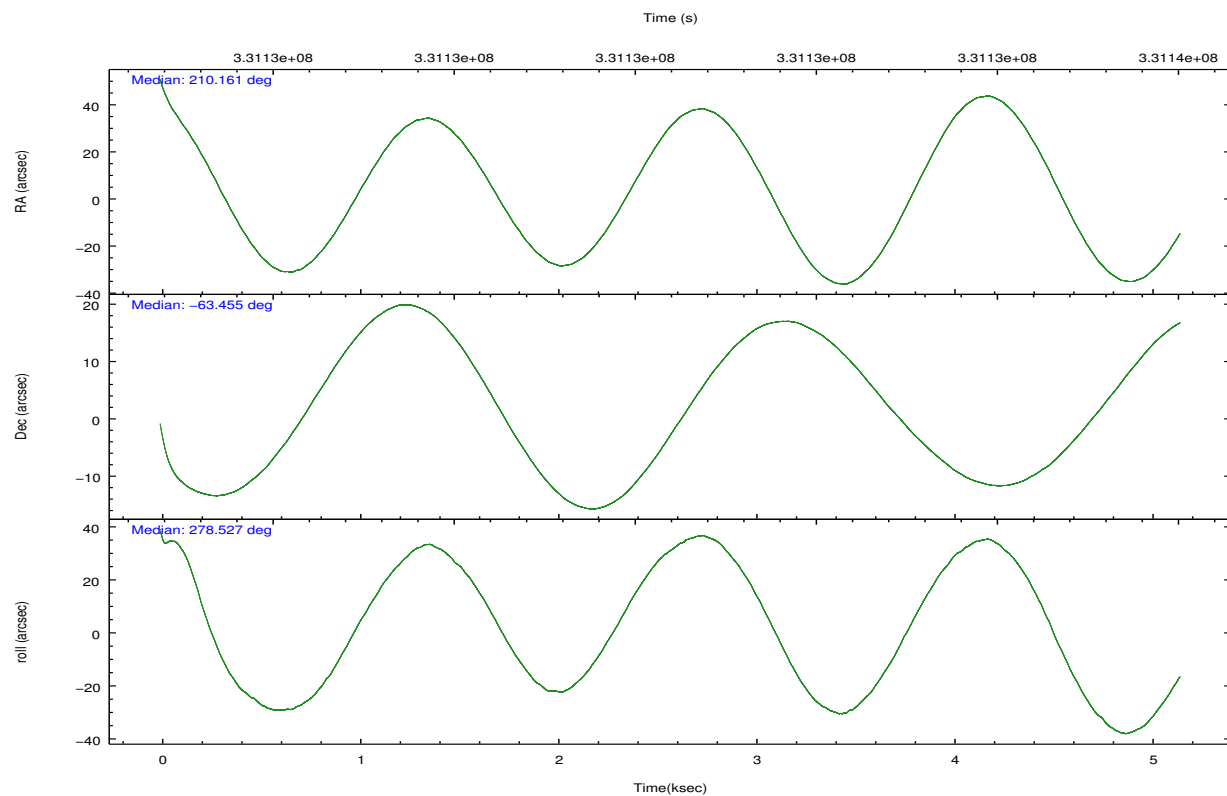
	ccd 0	ccd 1	ccd 2	ccd 3	ccd 6	ccd 7		ccd 0	ccd 1	ccd 2	ccd 3	ccd 6	ccd 7
level 1 events	49338	48690	53658	56307	54535	75522	grade 0 events	3021	3018	3132	6171	2622	2703
rejected events	42986	41962	47514	45929	48508	46921		6%	6%	5%	10%	4%	3%
rejected %	87%	86%	88%	81%	88%	62%	grade 1 events	28	22	52	81	22	81
								0%	0%	0%	0%	0%	0%
							grade 2 events	1578	1674	1349	1831	1404	6391
								3%	3%	2%	3%	2%	8%
							grade 3 events	612	660	549	830	614	2620
								1%	1%	1%	1%	1%	3%
							grade 4 events	573	629	609	836	636	2528
								1%	1%	1%	1%	1%	3%
							grade 5 events	2229	2416	2133	2632	2671	6947
								4%	4%	3%	4%	4%	9%
							grade 6 events	1168	1380	1098	1388	1329	17072
								2%	2%	2%	2%	2%	22%
							grade 7 events	40129	38891	44736	42538	45237	37180
								81%	79%	83%	75%	82%	49%

2.2 Compared Parameters

Parameter	Planned	Actual	Parameter	Planned	Actual
Instrument	ACIS	ACIS	Obspar format version number	7	7
Detector	ACIS-012367	ACIS-012367	Obspar file type	PREDICTED	ACTUAL
Grating	NONE	NONE	Obspar update status	NONE	UPDATED
Data mode	FAINT	FAINT	CCD I0 on	Y	Y
Observation mode	POINTING	POINTING	CCD I1 on	Y	Y
[deg] Pointing RA	210.123544	210.1616404175867	CCD I2 on	Y	Y
[deg] Pointing Dec	-63.432780	-63.45446839966484	CCD I3 on	Y	Y
[deg] Pointing Roll	278.289158	278.5318976782807	CCD S0 on	N	N
[mm] SIM focus pos	-0.782348	-0.7809083437167272	CCD S1 on	N	N
[mm] SIM defocus	0	0.001439871863259334	CCD S2 on	O1	Y
[mm] SIM translation stage pos	-233.592463	-233.5874344608287	CCD S3 on	O2	Y
[mm] SIM translation stage offset	0	-0.005018542100998502	CCD S4 on	N	N
[s] Observation start time (MET)	331129767.184000	331128472.09926	CCD S5 on	N	N
Observation start date	2008-06-29T12:28:22	2008-06-29T12:07:52	Number of optional ACIS chips dropped	0	0
[s] Observation end time (MET)	331134767.184000	331135332.4246	On-chip summing requested	N	N
Observation end date	2008-06-29T13:51:42	2008-06-29T14:02:12	Subarray requested	NONE	NONE
Read mode	TIMED	TIMED	Alternating exposures requested	N	N
			[s] Primary exposure time	0.000000	3.2

2.3 Aspect



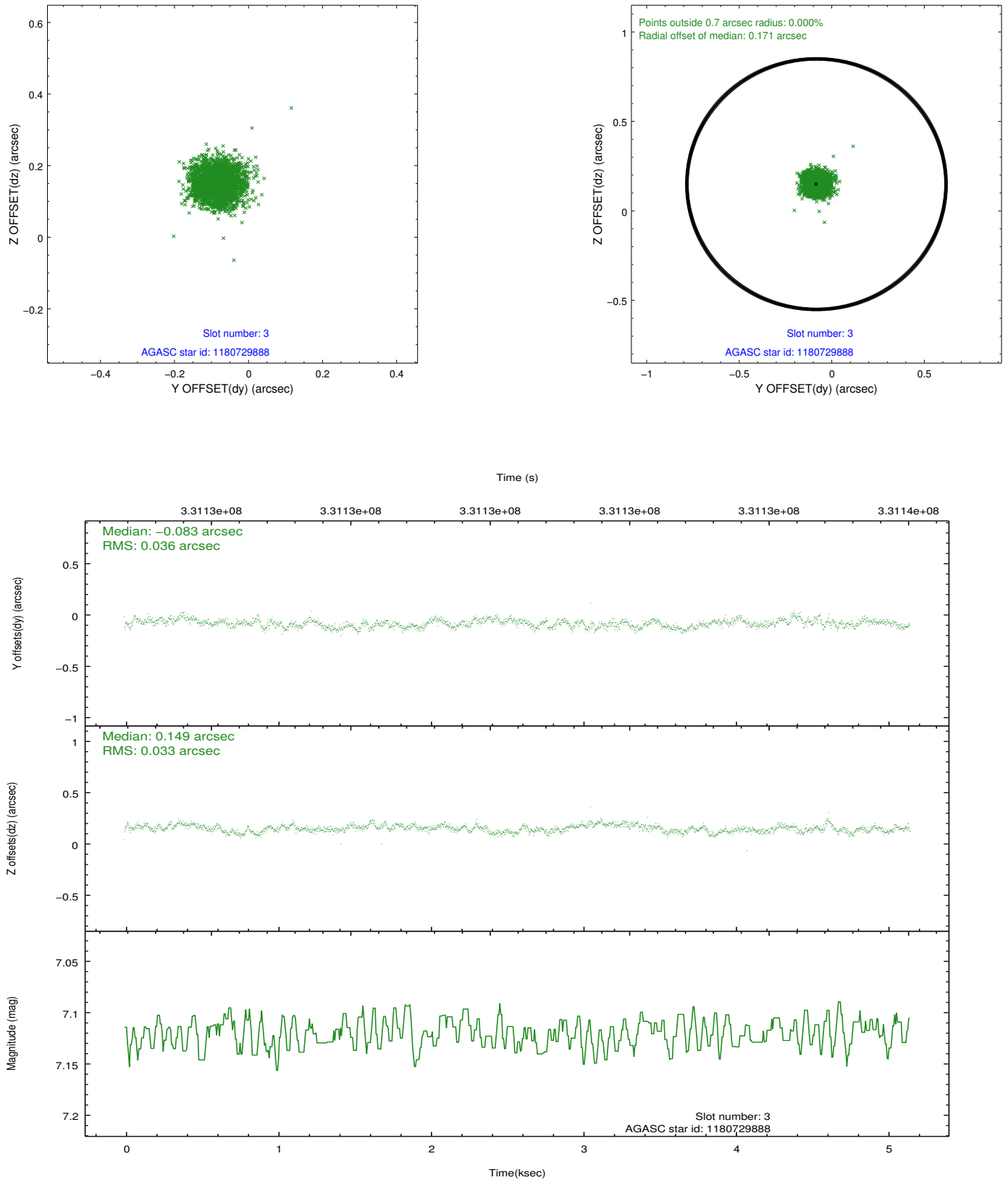


Slot Statistics

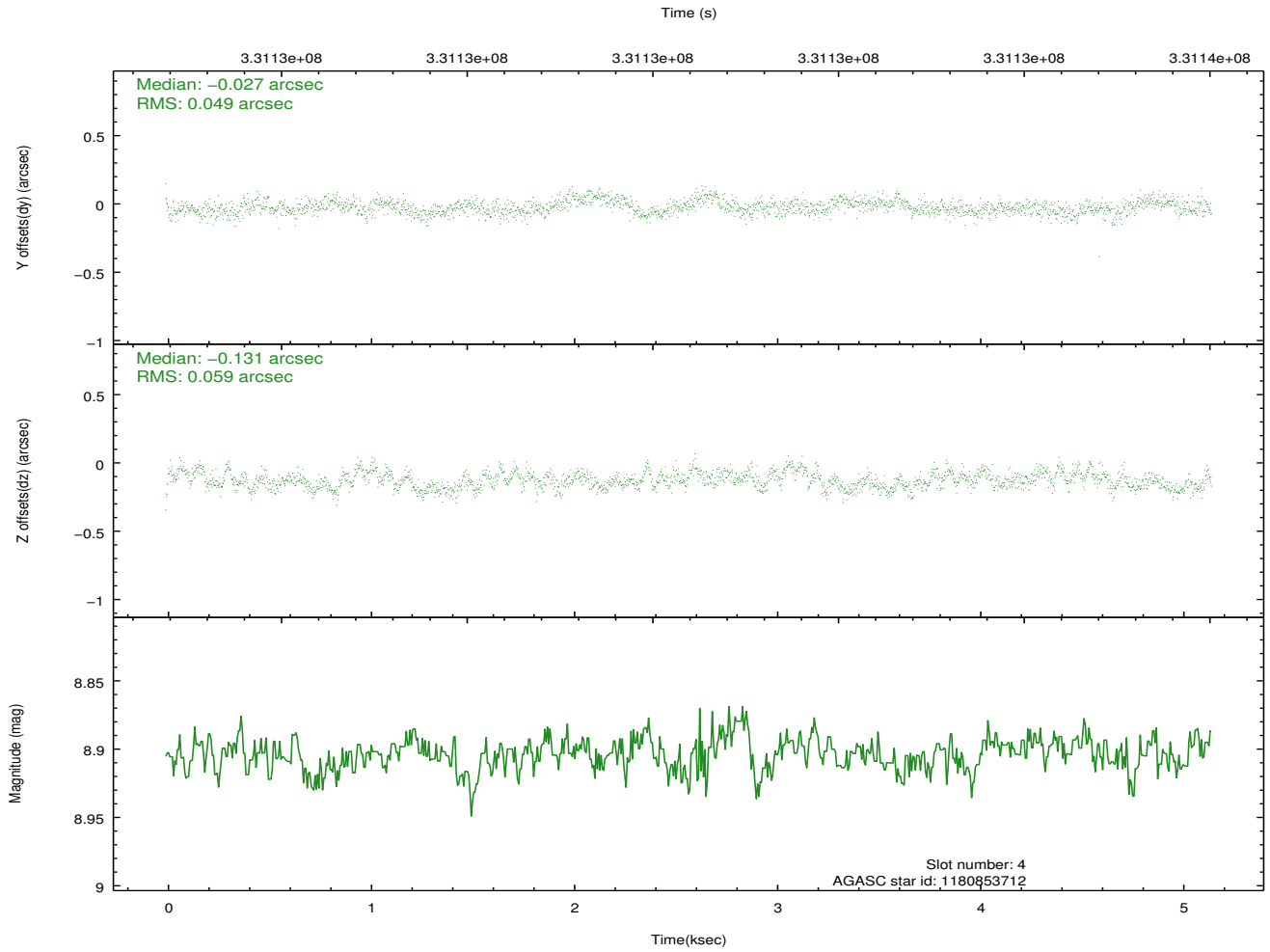
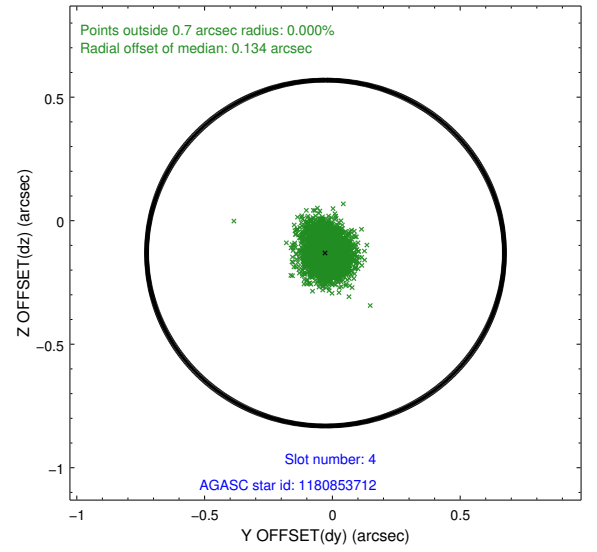
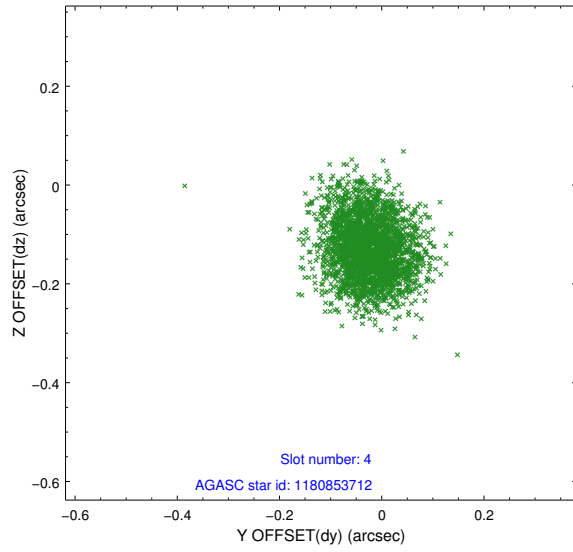
slot	status	id	mag	n_pts	med_dy	med_dz	dr1	dr2	ra	dec	mean_y	mean_z
0	FID	ACIS-I-1	6.99	1256	0.015	0.020	0.009	0.015	0.000000	0.000000	926.81	-838.33
1	FID	ACIS-I-2	6.92	1256	-0.028	-0.053	0.013	0.027	0.000000	0.000000	-766.67	-845.51
2	FID	ACIS-I-5	6.98	1257	-0.080	0.105	0.009	0.016	0.000000	0.000000	-1822.17	1058.52
3	GUIDE	1180729888	7.12	2513	-0.083	0.149	0.052	0.082	209.075631	-63.565145	242.62	-1731.73
4	GUIDE	1180853712	8.90	2510	-0.027	-0.131	0.082	0.132	210.053788	-63.077742	-1281.55	71.63
5	GUIDE	1181358272	8.56	2512	0.018	0.036	0.061	0.101	210.845135	-63.958092	2041.10	856.06
6	GUIDE	1180858176	8.75	2511	-0.024	-0.077	0.088	0.145	211.543919	-63.606624	972.07	2156.43
7	GUIDE	1181358704	9.35	2509	0.114	0.029	0.092	0.146	210.964162	-63.823492	1592.92	1118.81

2.4 Star Slots

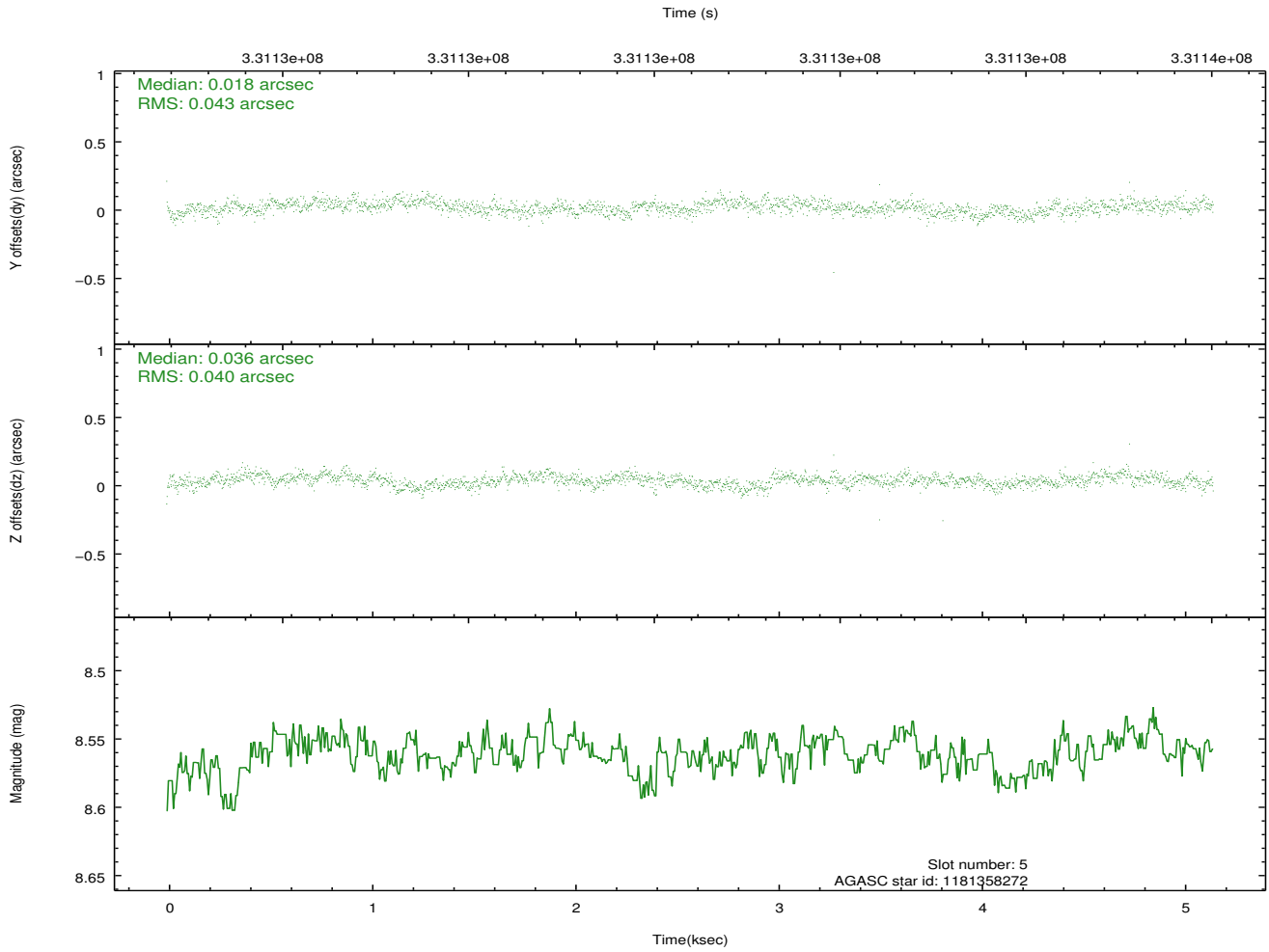
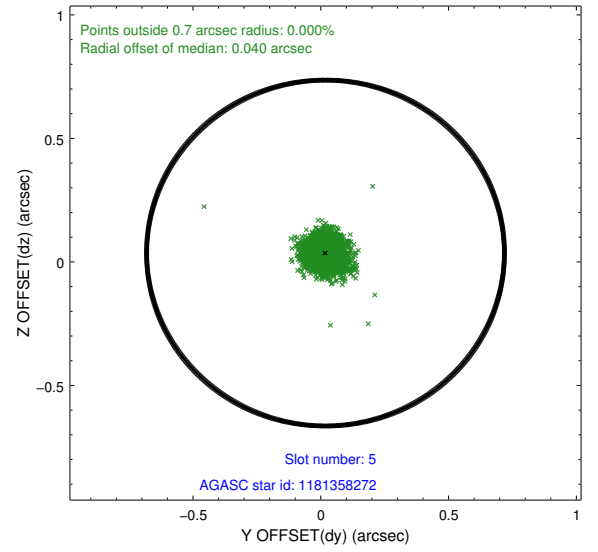
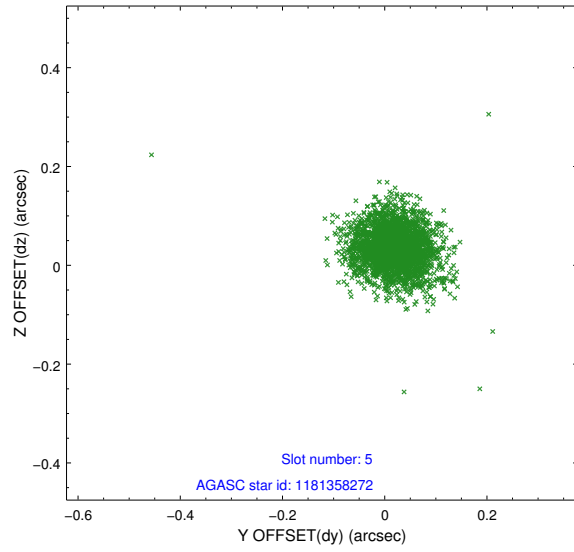
2.4.1 Slot 3



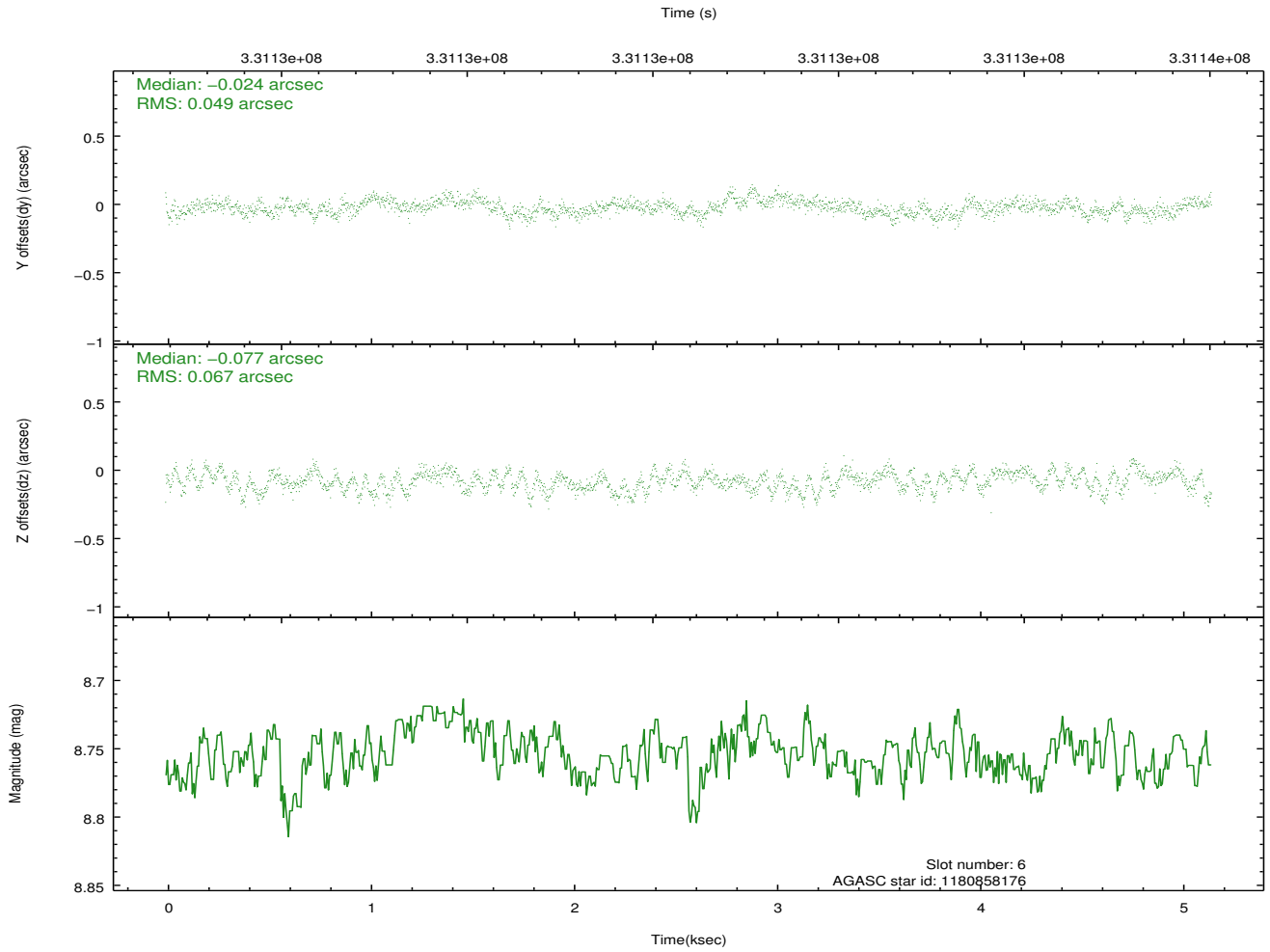
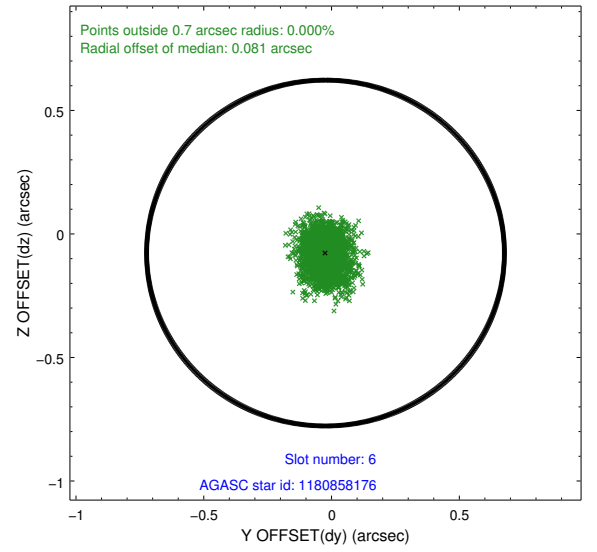
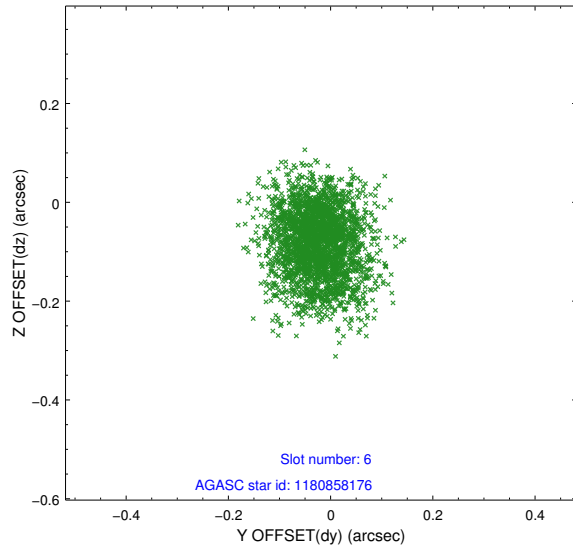
2.4.2 Slot 4



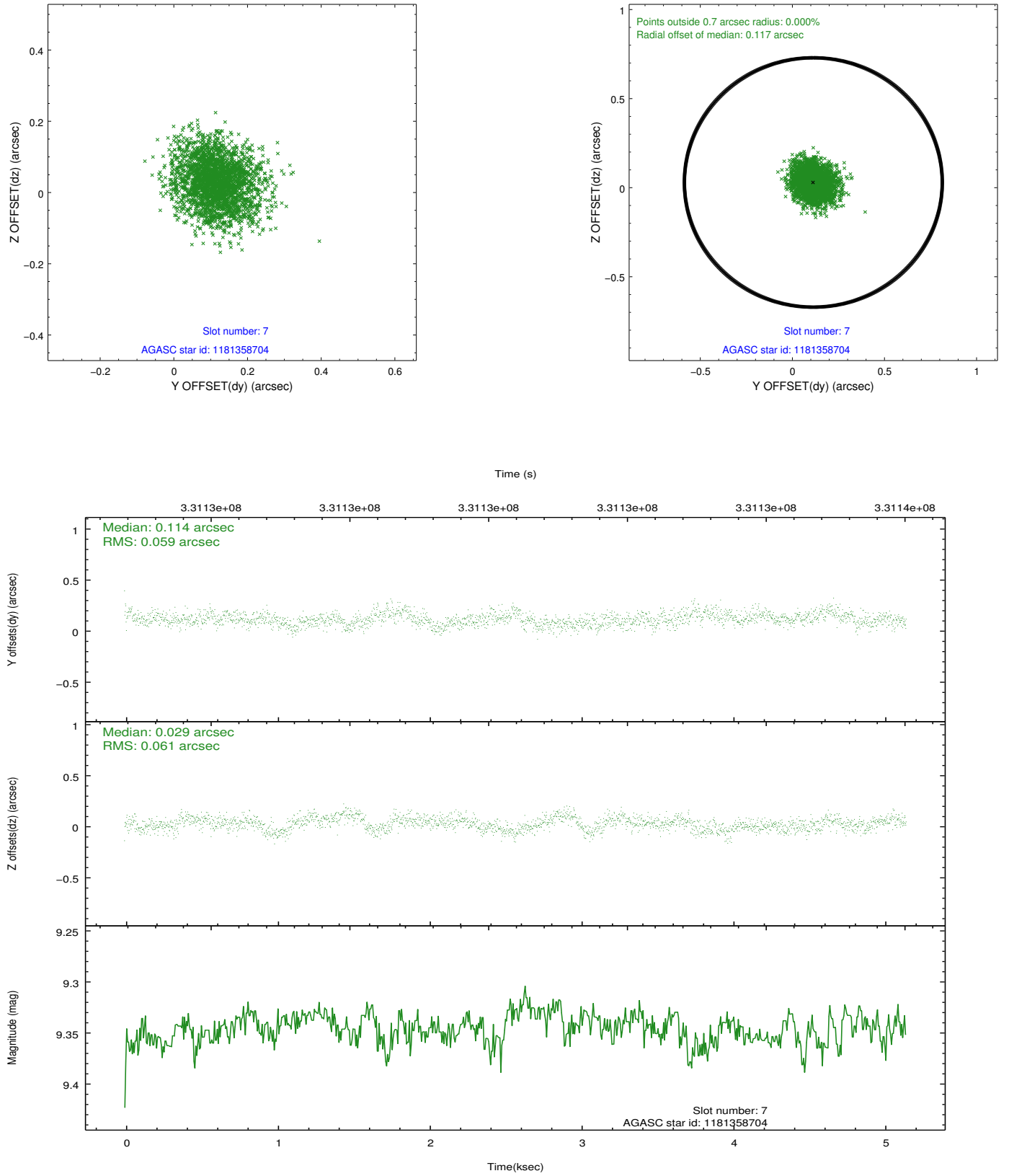
2.4.3 Slot 5



2.4.4 Slot 6

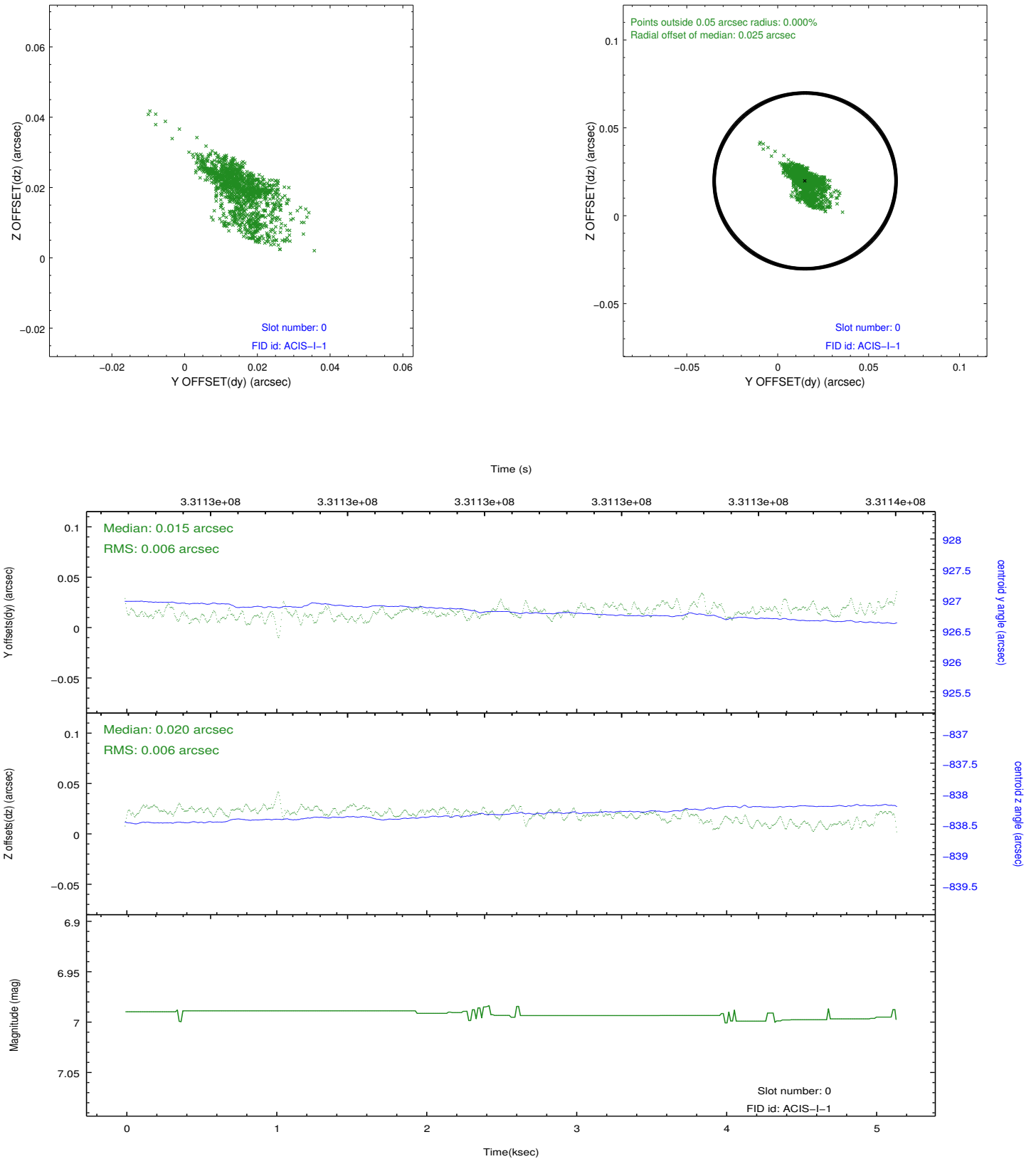


2.4.5 Slot 7

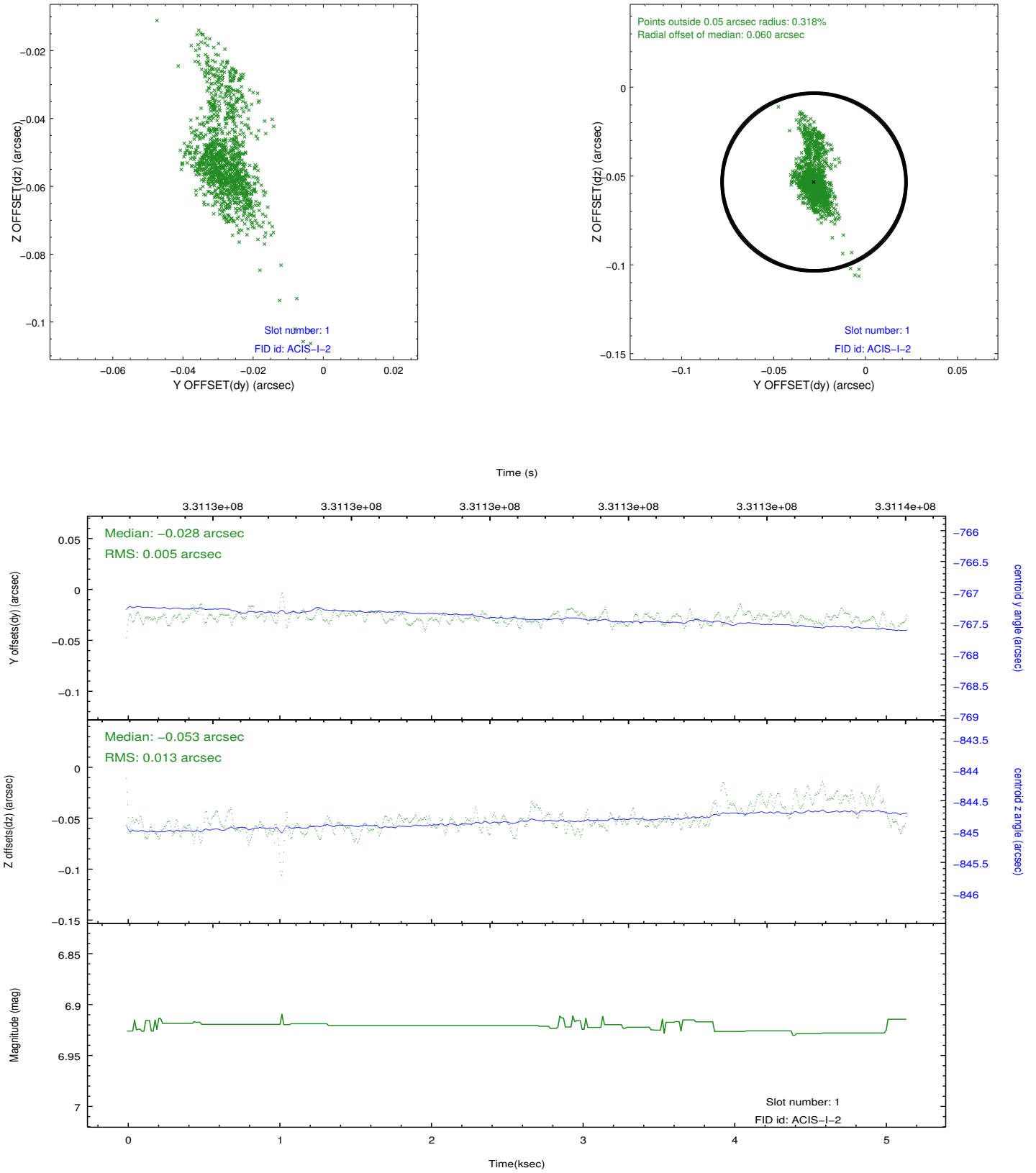


2.5 FID Slots

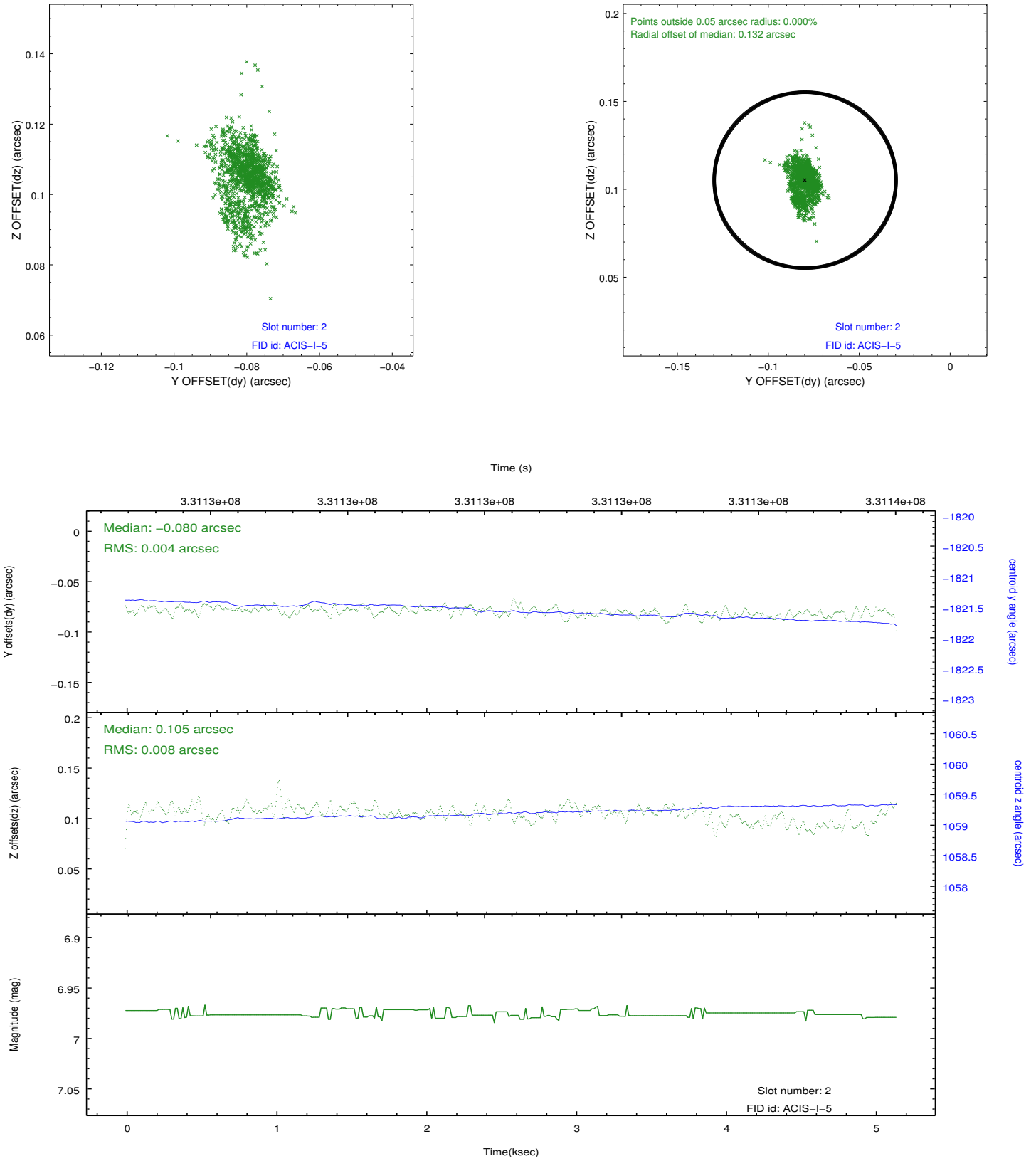
2.5.1 Slot 0



2.5.2 Slot 1



2.5.3 Slot 2



A Summary

A.1 Status

V&V Scientist	Beth Sundheim
V&V Date (YYYY-MM-DD)	2012.05.23
V&V Edition	1
V&V Disposition and Status	OK
V&V Charge Time	5.14239998

A.2 Comments

Joint proposal with NOAO.