

V&V Reference Report

L2 ASCDS Version : 8.4.4

Observation 8918 - L2 Version 2
Chandra X-Ray Center

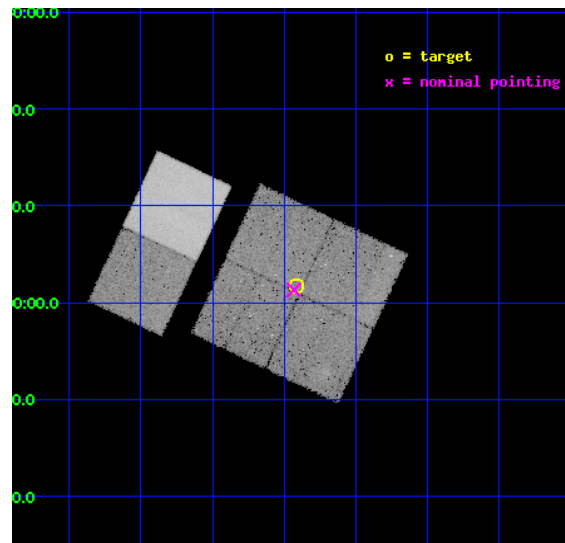
L2 Processing Date : May 25 2012

Contents

1	Front	2
2	OBI	3
2.1	OBI	3
2.1.1	Images	3
2.1.2	Bias	3
2.1.3	Parameters	4
2.1.4	Events	4
2.2	Compared Parameters	5
2.3	Aspect	6
2.4	Star Slots	9
2.4.1	Slot 3	9
2.4.2	Slot 4	10
2.4.3	Slot 5	11
2.4.4	Slot 6	12
2.4.5	Slot 7	13
2.5	FID Slots	14
2.5.1	Slot 0	14
2.5.2	Slot 1	15
2.5.3	Slot 2	16
A	Summary	17
A.1	Status	17
A.2	Comments	17

1 Front

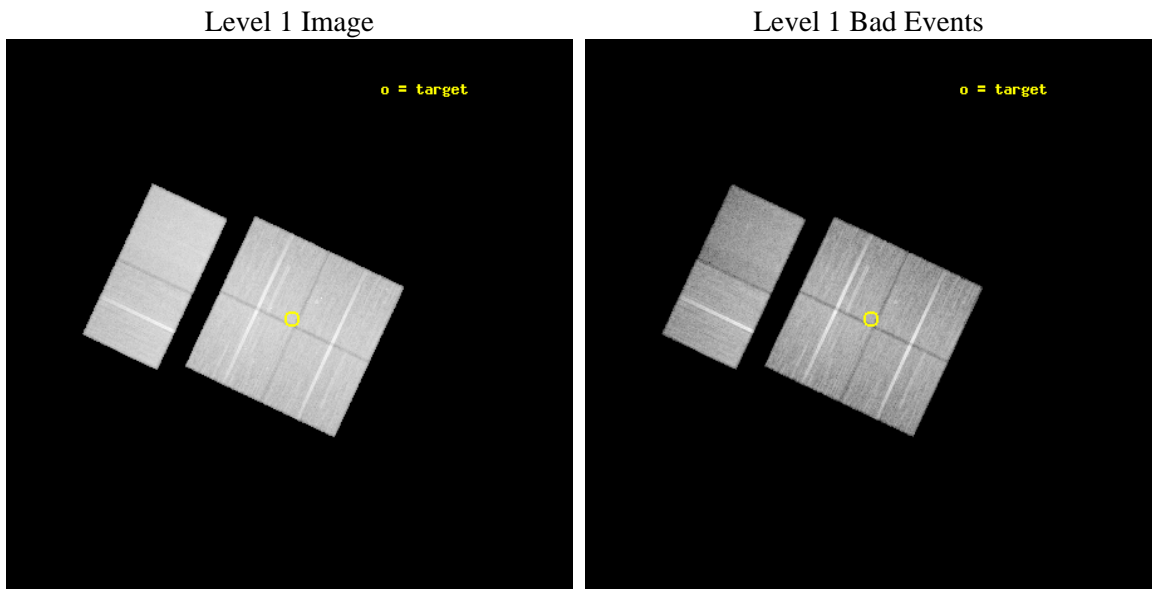
seq_num	200499	Sequence number
obs_id	8918	Observation id
title	The Full Picture of Magnetic Activity in Ultracool Dwarfs: Simultaneous Observations of Coronae and Chromospheres	Proposal title
observer	Prof. Edo Berger	Principal investigator
object	BRI0021-0214	Source name
dtcycle	0	
cycle	P	events from which exps? Prim/Second/Both
ra_targ	6.1025	Observer's specified target RA [deg]
dec_targ	-1.972222	Observer's specified target Dec [deg]
ra_nom	6.1079740170927	Nominal RA [deg]
dec_nom	-1.9781654357049	Nominal Dec [deg]
roll_nom	295.20887760206	Nominal Roll [deg]
revision	2	Processing version of data
ontime	30179.199887633	Sum of GTIs [s]
livetime	29797.052686924	Livetime [s]
ontime0	30179.199887633	Sum of GTIs [s]
ontime1	30175.958886862	Sum of GTIs [s]
ontime2	30179.199887633	Sum of GTIs [s]
ontime3	30179.199887633	Sum of GTIs [s]
ontime6	30175.958867431	Sum of GTIs [s]
ontime7	30179.199887633	Sum of GTIs [s]
l2events	230069	Number of level 2 events



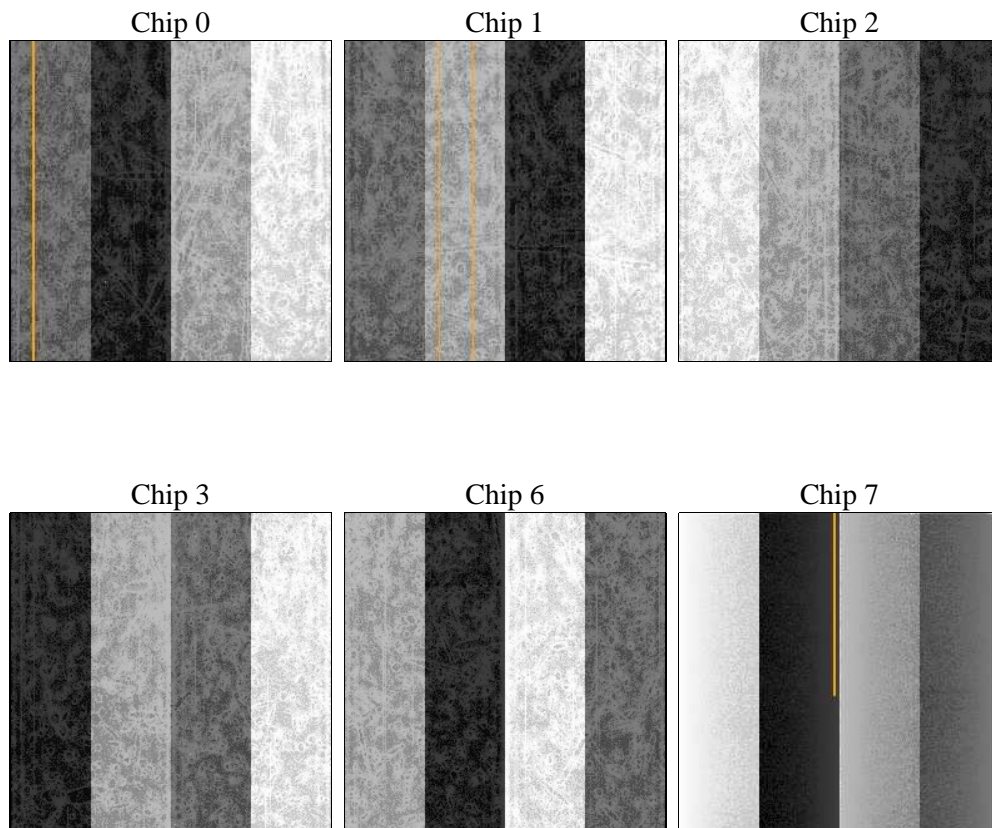
2 OBI

2.1 OBI

2.1.1 Images



2.1.2 Bias



2.1.3 Parameters

obi_num	0	Obi number	sched_exp_time	30000.000000	[s] Scheduled observation exposure time
ascdsver	8.4.4	Processing system revision	ontime	30179.199887633	Sum of GTIs [s]
caldsver	4.4.9	 	ontime0	30179.199887633	Sum of GTIs [s]
date	2012-05-25T05:36:28	Date and time of file creation	ontime1	30175.958886862	Sum of GTIs [s]
revision	2	Processing version of data	ontime2	30179.199887633	Sum of GTIs [s]
			ontime3	30179.199887633	Sum of GTIs [s]
			ontime6	30175.958867431	Sum of GTIs [s]
			ontime7	30179.199887633	Sum of GTIs [s]
			l1events	1489554	Number of level 1 events

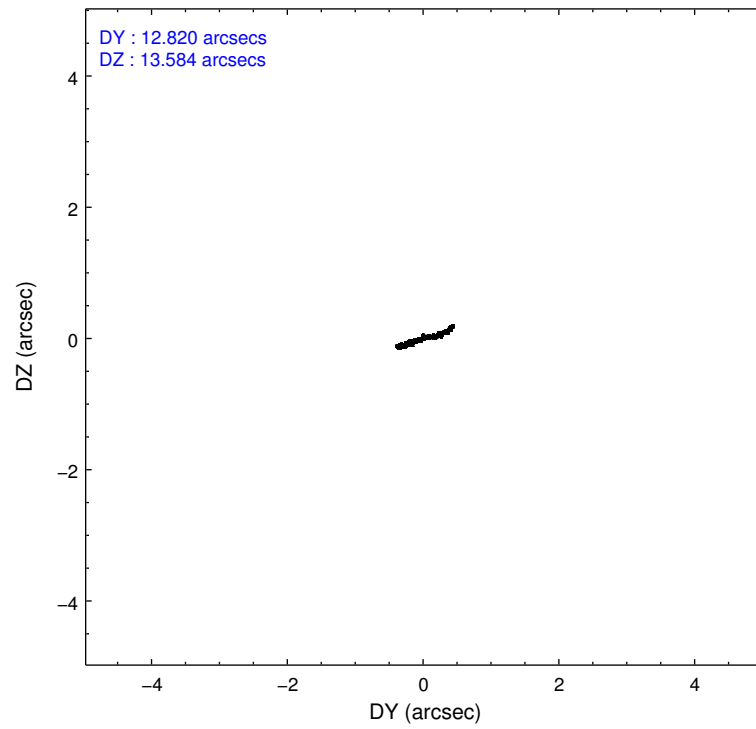
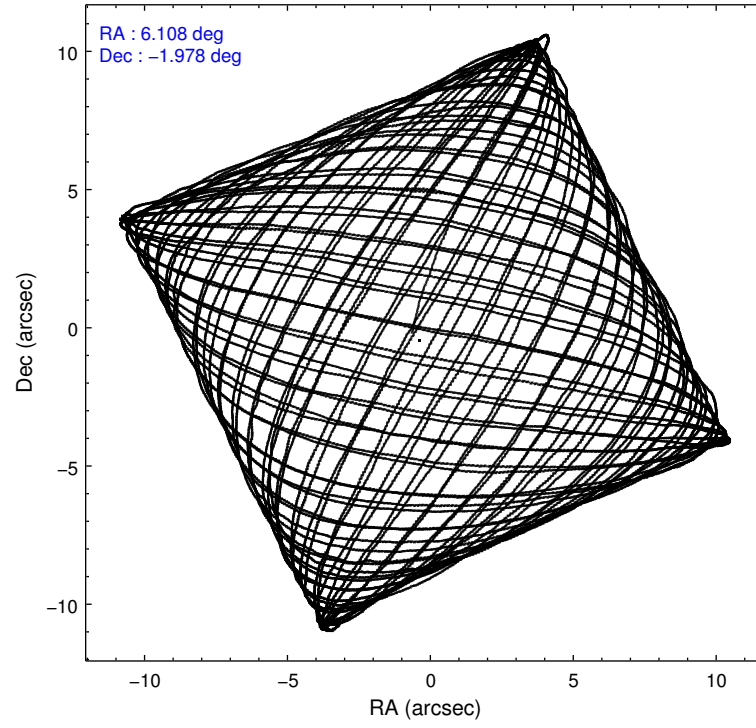
2.1.4 Events

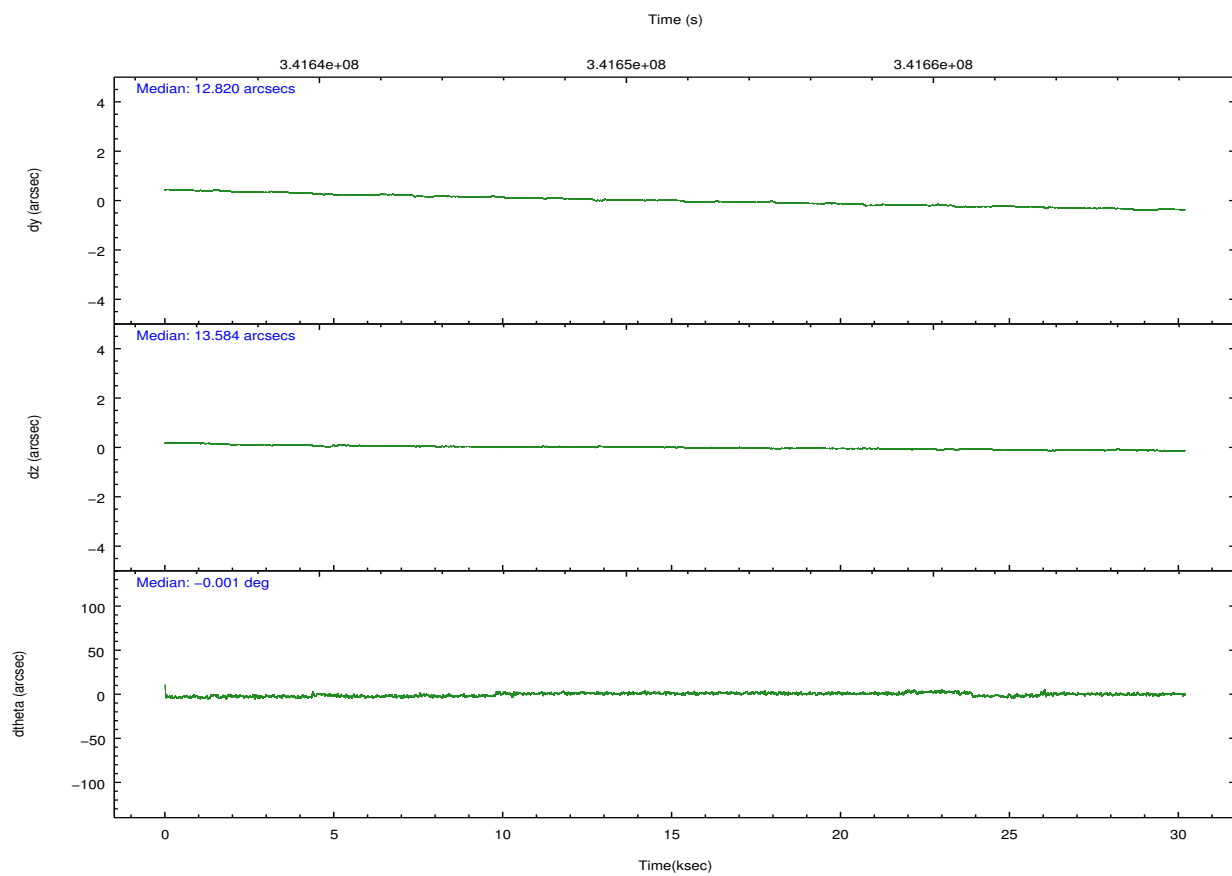
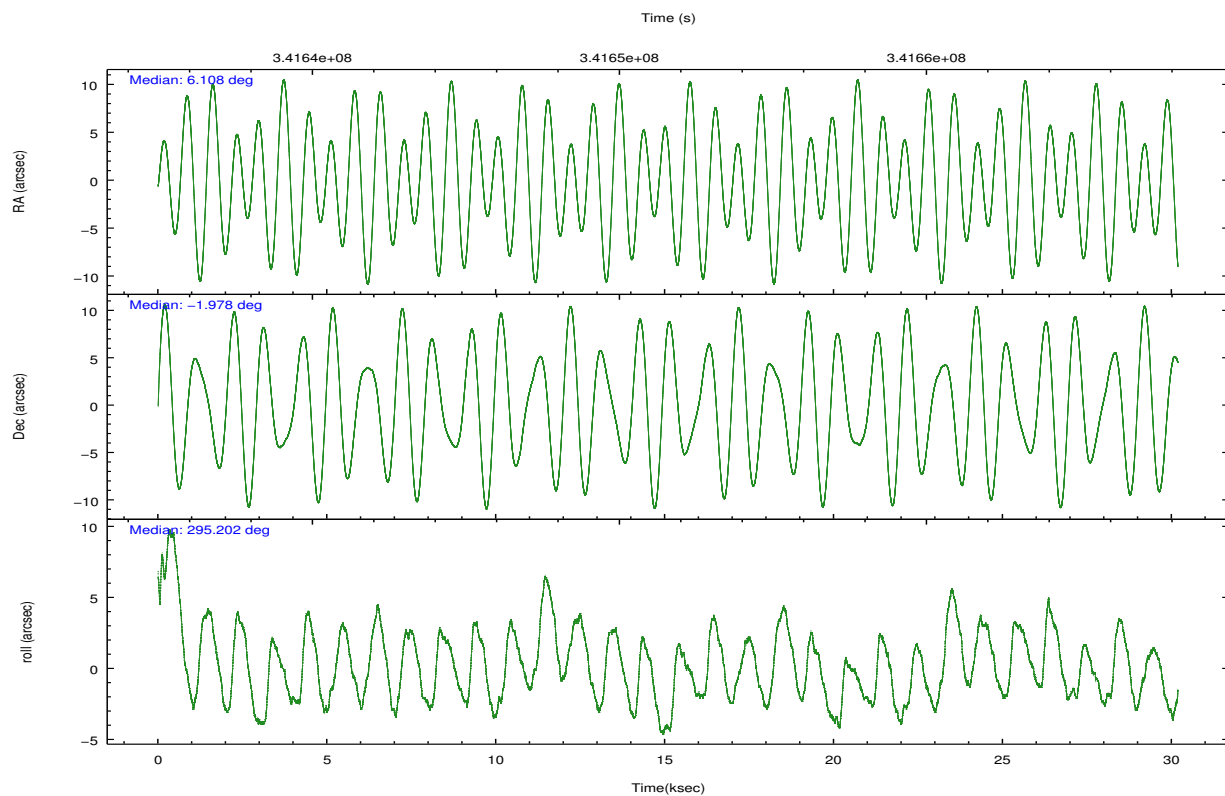
	ccd 0	ccd 1	ccd 2	ccd 3	ccd 6	ccd 7		ccd 0	ccd 1	ccd 2	ccd 3	ccd 6	ccd 7
level 1 events	224437	228922	257686	240973	253950	283586	grade 0 events	9106	10435	9047	8290	9054	11781
rejected events	199447	200652	233134	217566	227866	156247		4%	4%	3%	3%	3%	4%
rejected %	88%	87%	90%	90%	89%	55%	grade 1 events	140	135	146	138	129	400
								0%	0%	0%	0%	0%	0%
							grade 2 events	5937	6469	5926	5256	6054	26511
								2%	2%	2%	2%	2%	9%
							grade 3 events	2750	2988	2604	2618	2823	11683
								1%	1%	1%	1%	1%	4%
							grade 4 events	2552	3035	2667	2649	2598	11474
								1%	1%	1%	1%	1%	4%
							grade 5 events	8848	10061	8301	10140	10313	29736
								3%	4%	3%	4%	4%	10%
							grade 6 events	4906	5643	4562	4834	5797	67267
								2%	2%	1%	2%	2%	23%
							grade 7 events	190198	190156	224433	207048	217182	124734
								84%	83%	87%	85%	85%	43%

2.2 Compared Parameters

Parameter	Planned	Actual	Parameter	Planned	Actual
Instrument	ACIS	ACIS	Obspar format version number	7	7
Detector	ACIS-012367	ACIS-012367	Obspar file type	PREDICTED	ACTUAL
Grating	NONE	NONE	Obspar update status	NONE	UPDATED
Data mode	VFAINT	VFAINT	CCD I0 on	Y	Y
Observation mode	POINTING	POINTING	CCD I1 on	Y	Y
[deg] Pointing RA	6.085303	6.107974017092747	CCD I2 on	Y	Y
[deg] Pointing Dec	-1.962583	-1.97816543570488	CCD I3 on	Y	Y
[deg] Pointing Roll	294.999409	295.2088776020643	CCD S0 on	N	N
[s] Window start time (MET)	336614465.184000	336614465.184000	CCD S1 on	N	N
[s] Window stop time (MET)	344476865.184000	344476865.184000	CCD S2 on	O2	Y
[mm] SIM focus pos	-0.782348	-0.7809083437167272	CCD S3 on	O1	Y
[mm] SIM defocus	0	0.001439871863259334	CCD S4 on	N	N
[mm] SIM translation stage pos	-233.592463	-233.5874344608287	CCD S5 on	N	N
[mm] SIM translation stage offset	0	-0.005018542100998502	Number of optional ACIS chips dropped	0	0
[s] Observation start time (MET)	341636674.184000	341635442.96257	On-chip summing requested	N	N
Observation start date	2008-10-29T03:03:29	2008-10-29T02:44:02	Subarray requested	NONE	NONE
[s] Observation end time (MET)	341666674.184000	341667211.81414	Alternating exposures requested	N	N
Observation end date	2008-10-29T11:23:29	2008-10-29T11:33:31	[s] Primary exposure time	0.000000	3.2
Read mode	TIMED	TIMED			

2.3 Aspect



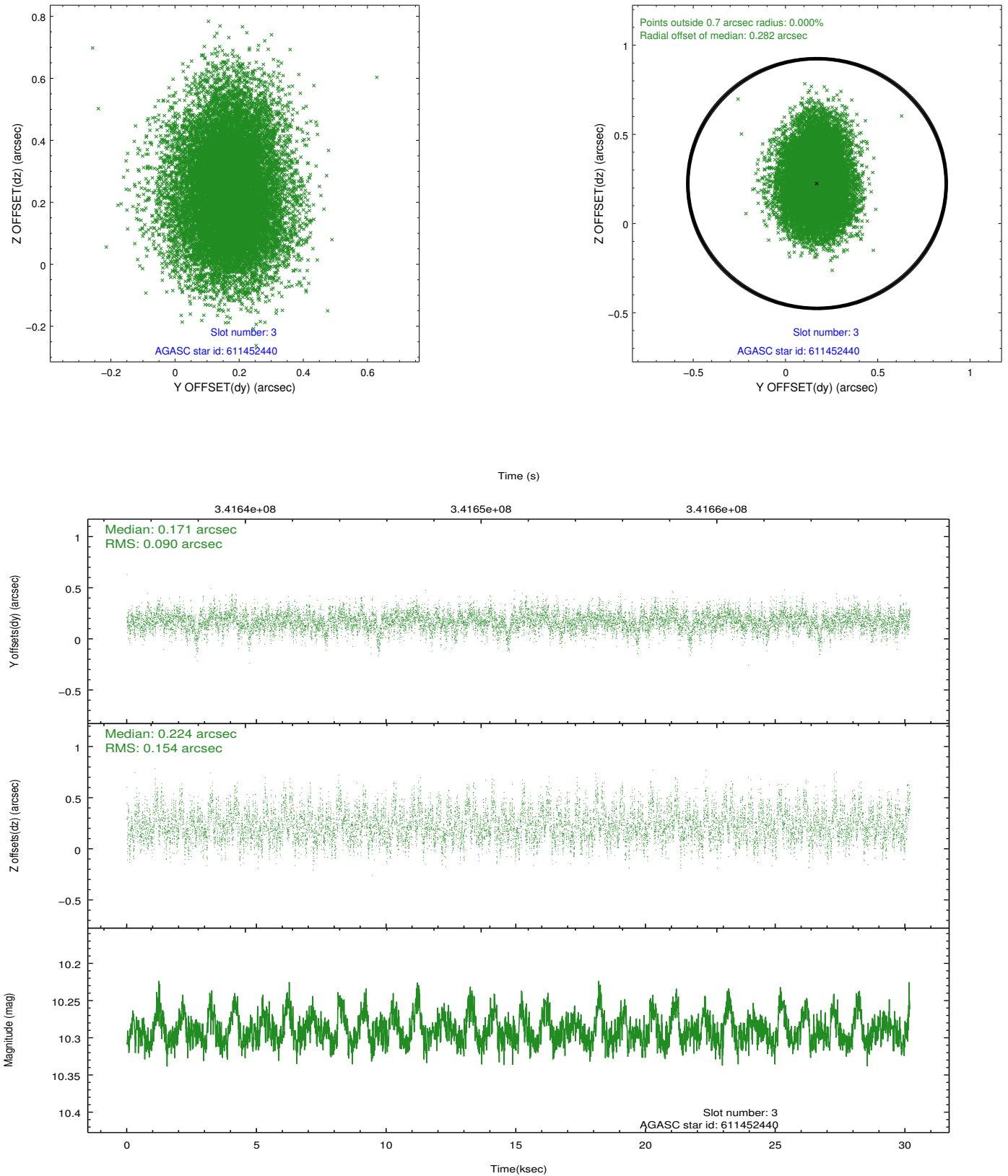


Slot Statistics

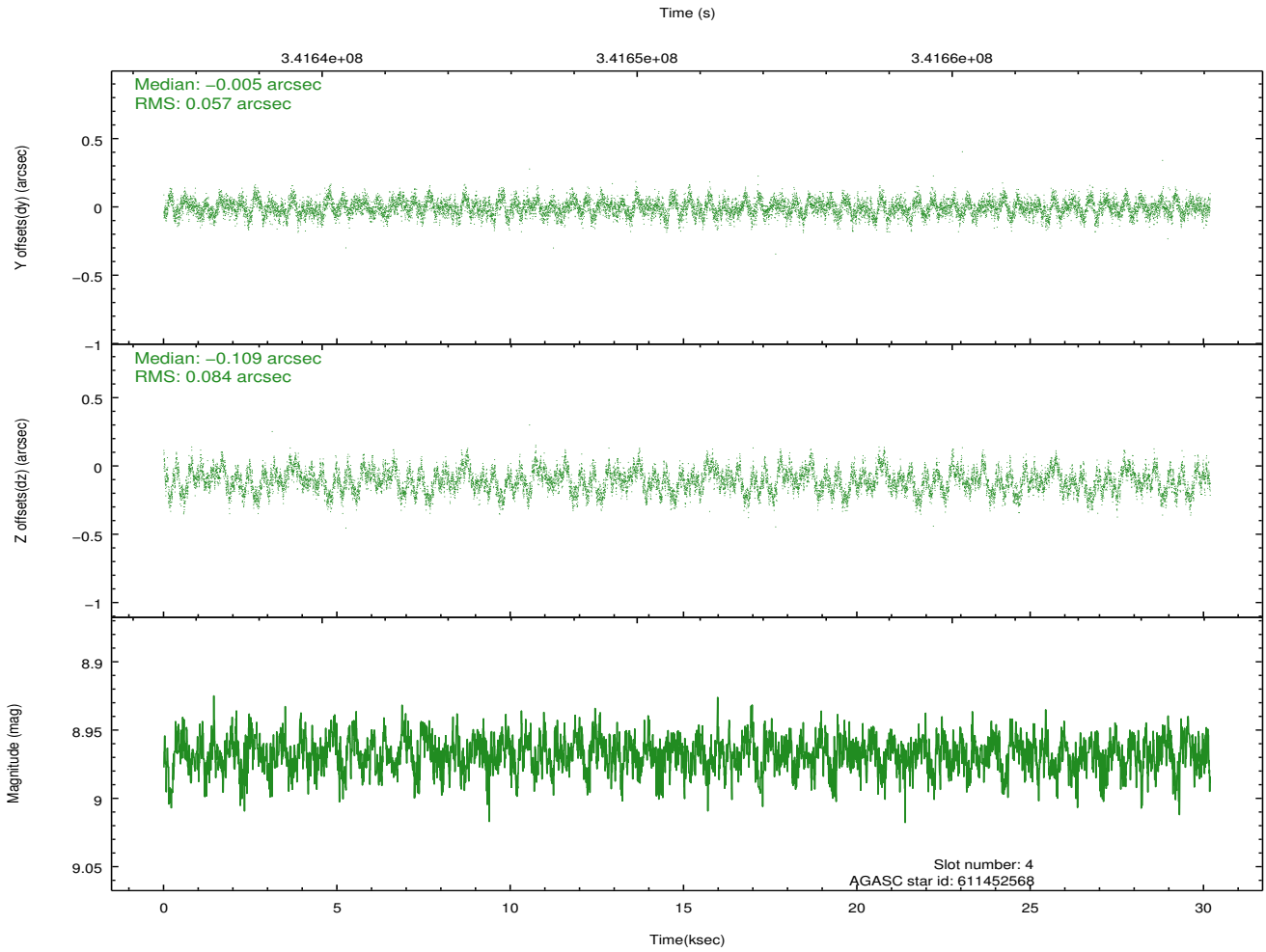
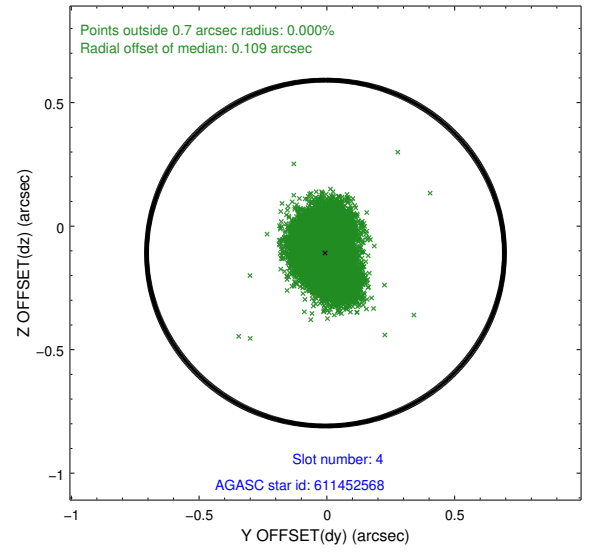
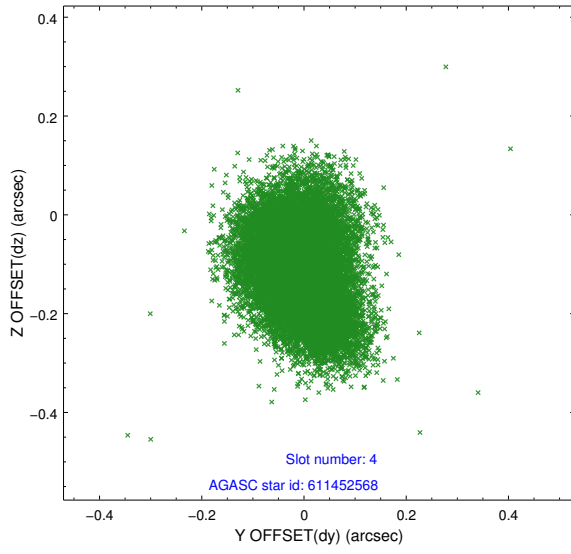
slot	status	id	mag	n_pts	med_dy	med_dz	dr1	dr2	ra	dec	mean_y	mean_z
0	FID	ACIS-I-1	7.04	7362	-0.054	0.086	0.014	0.026	0.000000	0.000000	926.62	-837.08
1	FID	ACIS-I-2	6.95	7360	-0.156	-0.102	0.017	0.029	0.000000	0.000000	-767.53	-843.70
2	FID	ACIS-I-4	6.97	7362	0.111	0.080	0.025	0.039	0.000000	0.000000	2146.69	1062.66
3	GUIDE	611452440	10.29	14690	0.171	0.224	0.188	0.314	5.395016	-2.043965	-782.86	-2374.42
4	GUIDE	611452568	8.97	14716	-0.005	-0.109	0.108	0.177	6.308705	-1.833133	-82.55	925.44
5	GUIDE	611456000	10.01	14636	0.209	-0.247	0.203	0.314	6.481161	-1.475710	-986.22	2031.83
6	GUIDE	611458248	9.00	14649	-0.220	0.155	0.092	0.146	5.827673	-1.559564	-1706.54	-226.63
7	GUIDE	611458256	7.83	14724	-0.151	-0.043	0.074	0.117	6.076809	-1.241285	-2366.50	1069.63

2.4 Star Slots

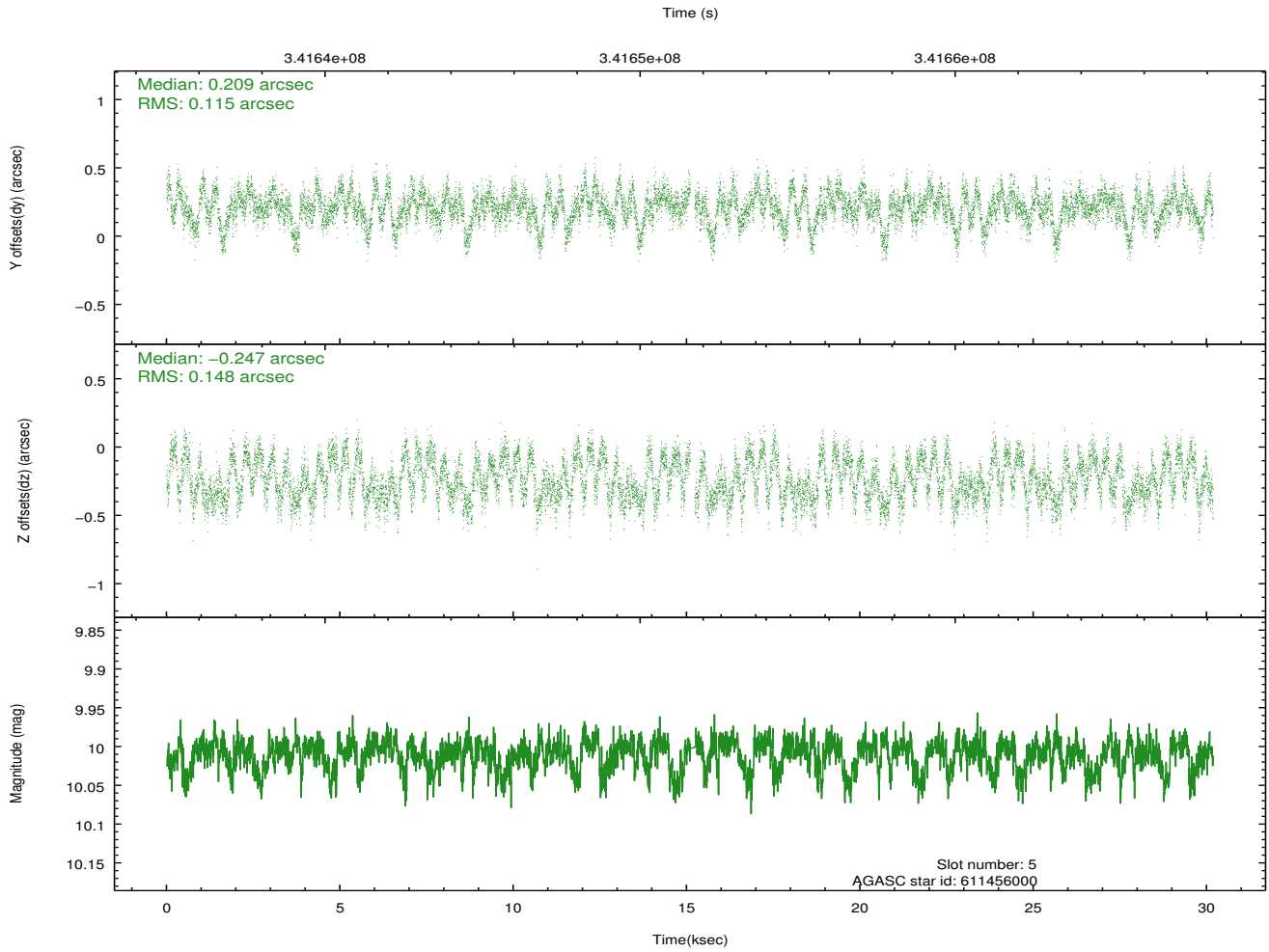
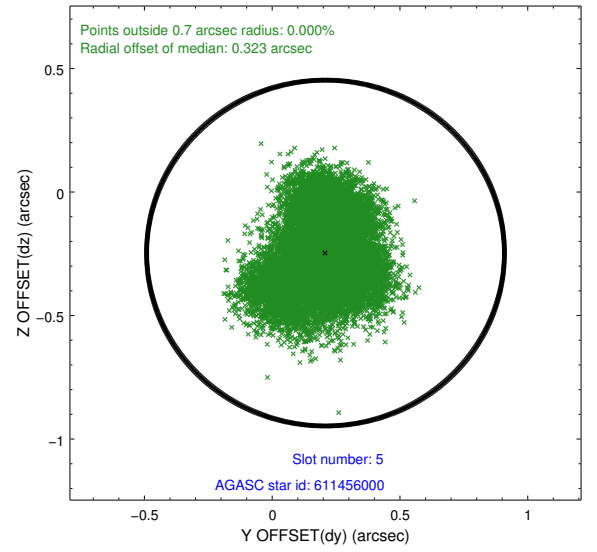
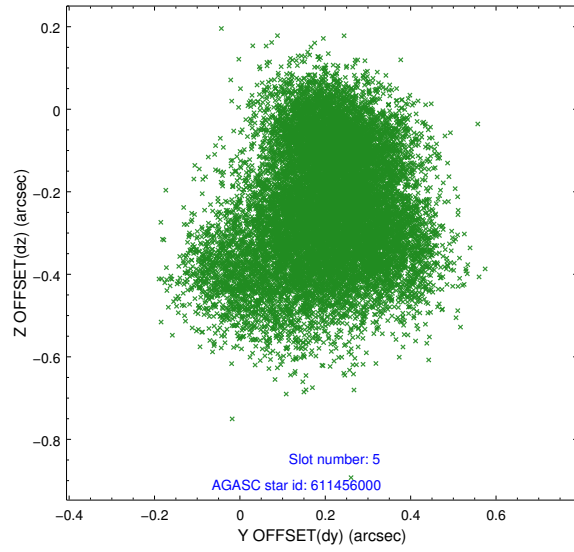
2.4.1 Slot 3



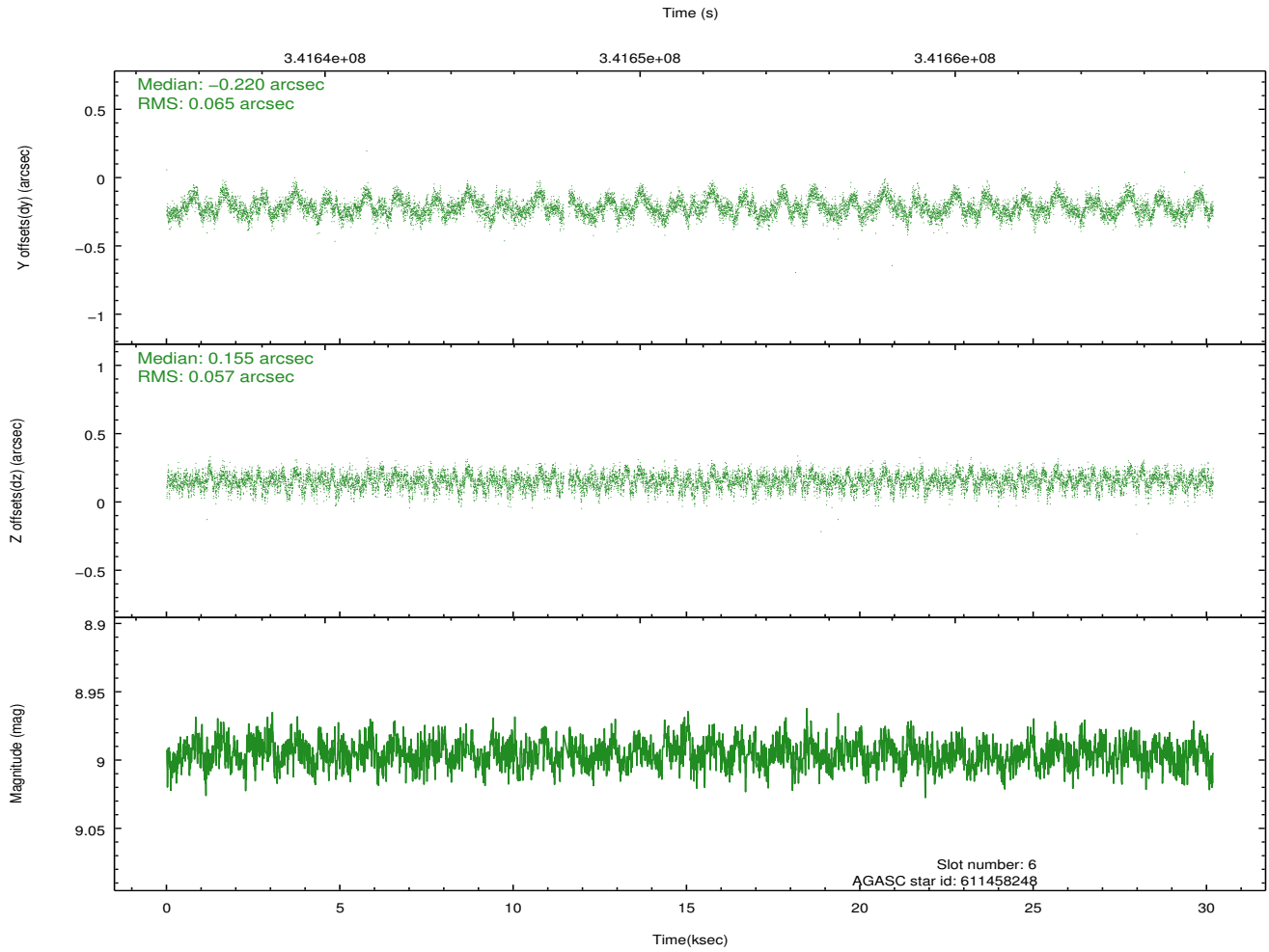
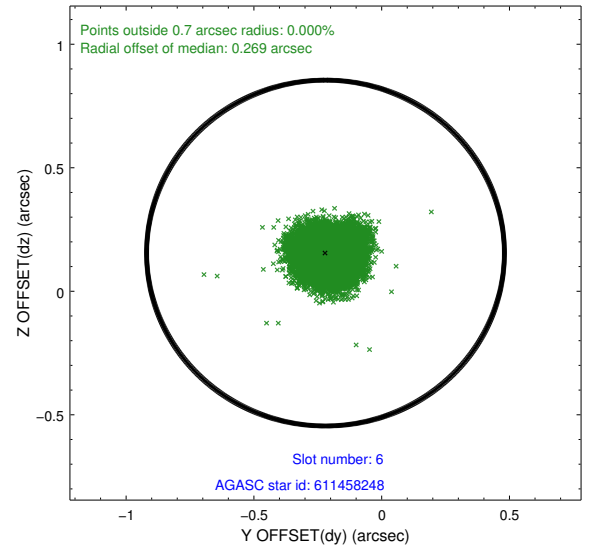
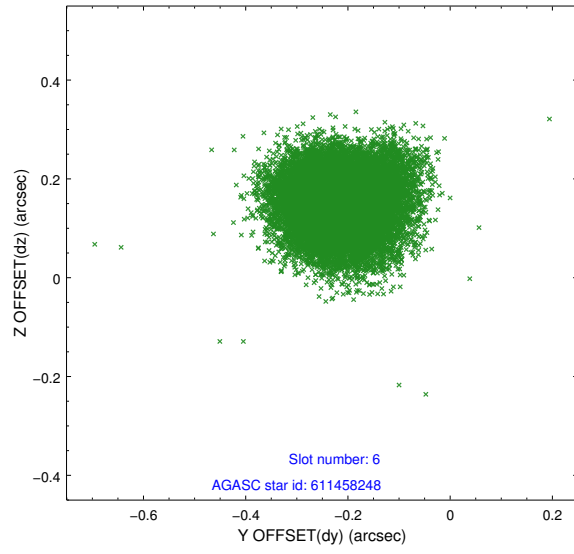
2.4.2 Slot 4



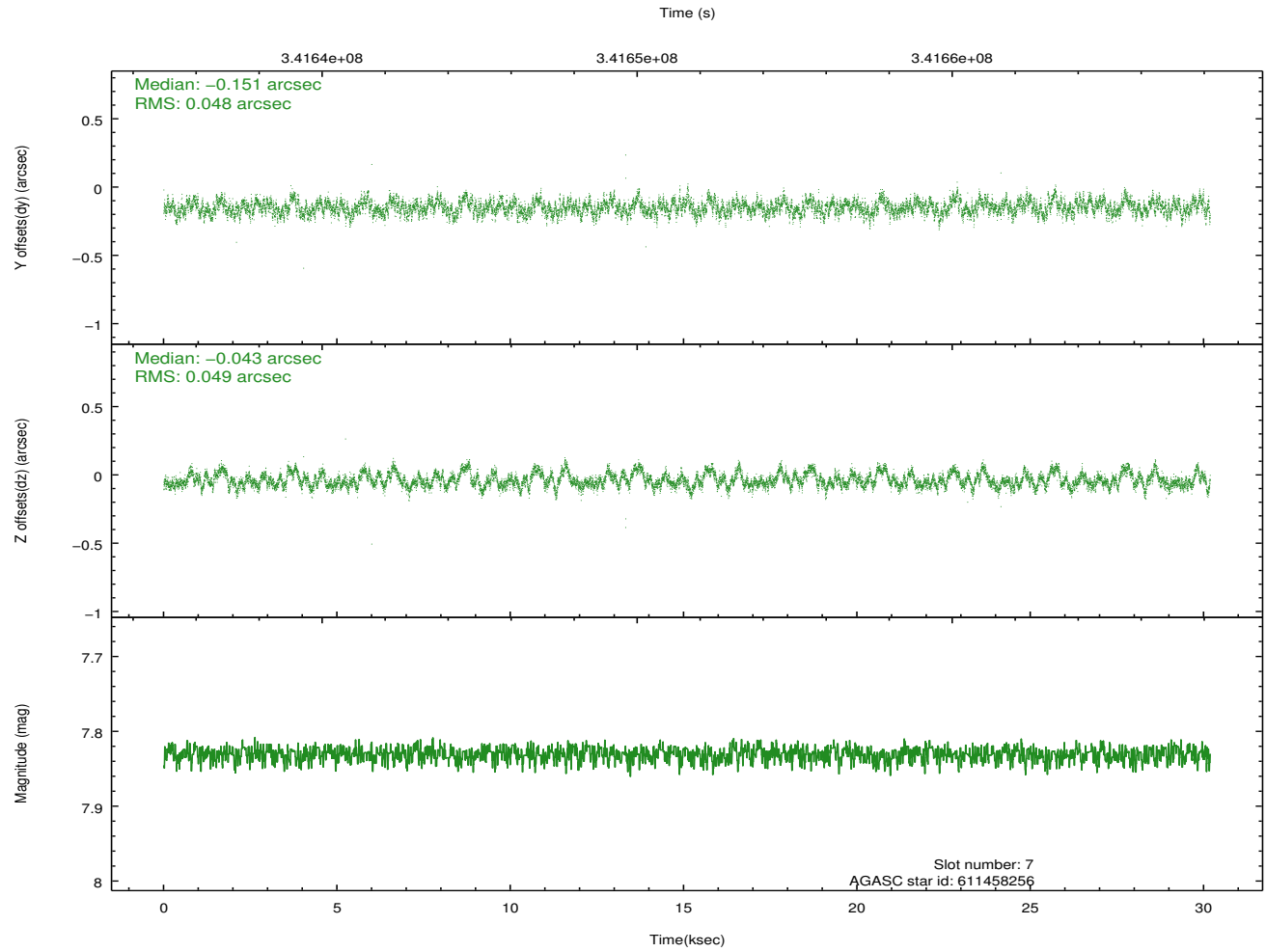
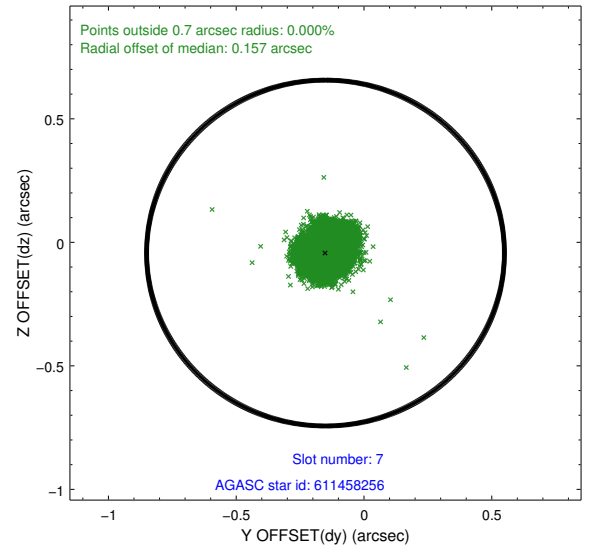
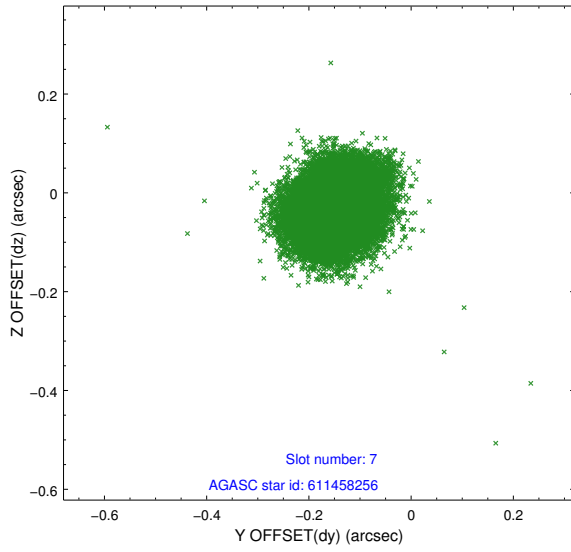
2.4.3 Slot 5



2.4.4 Slot 6

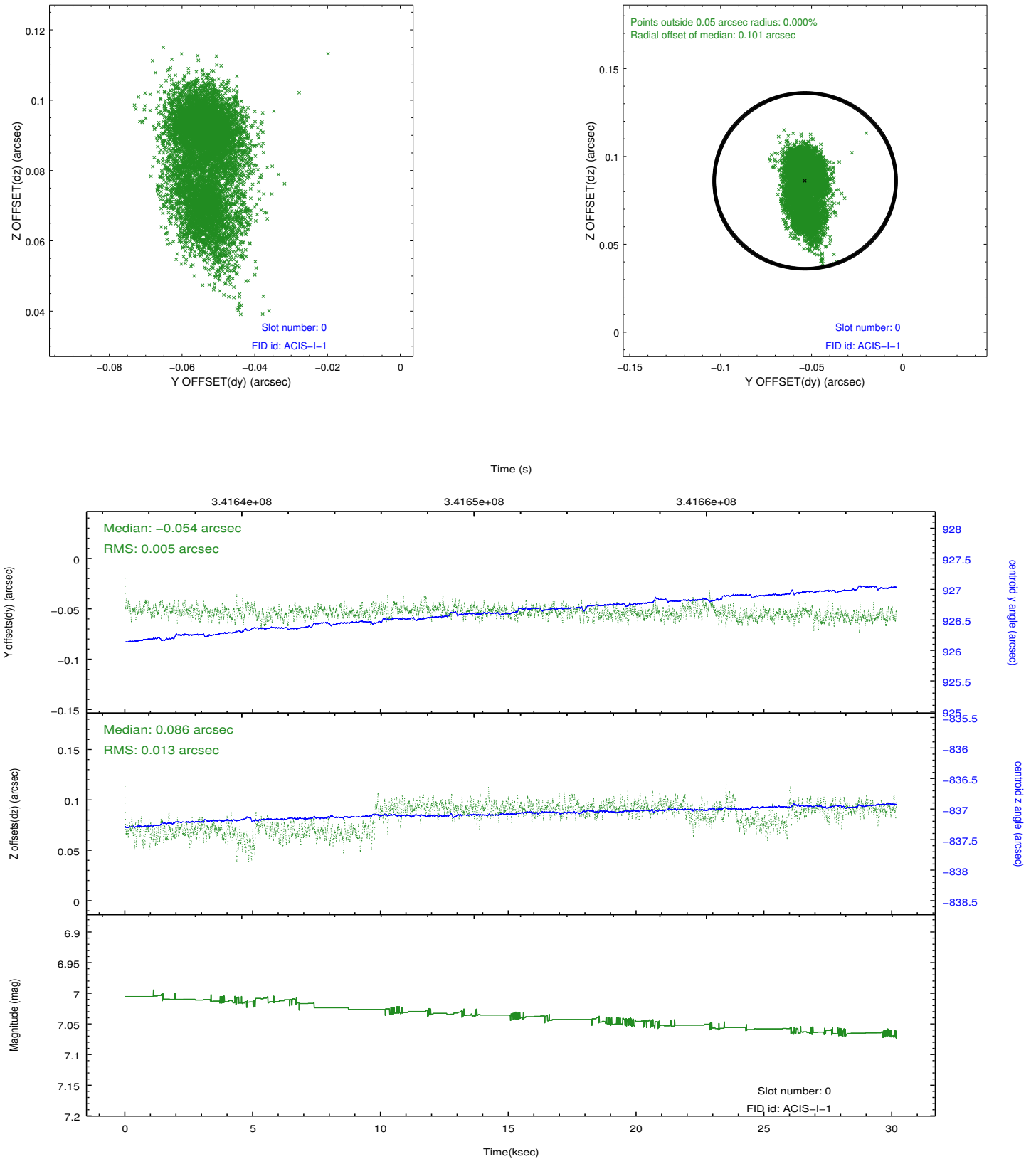


2.4.5 Slot 7

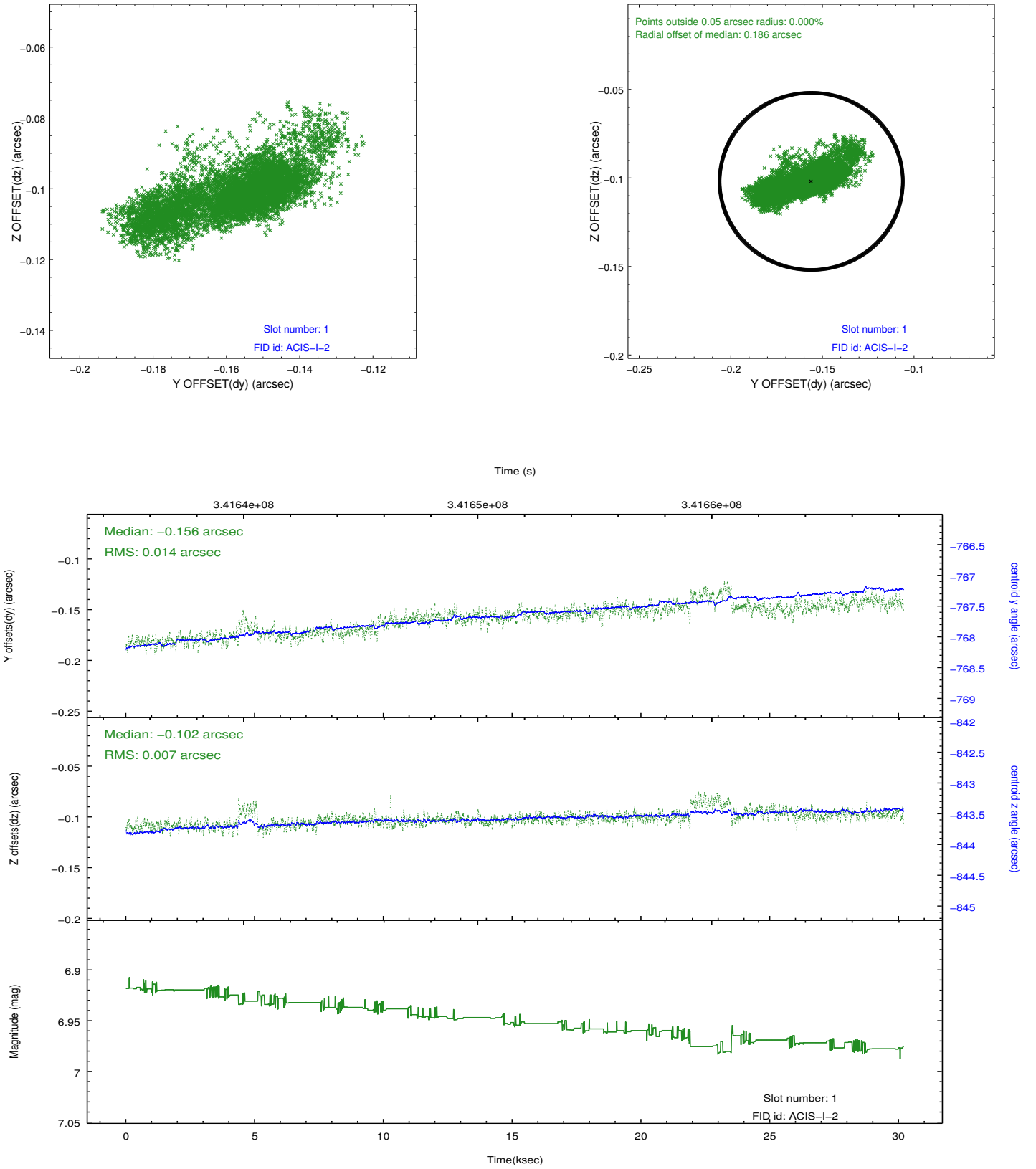


2.5 FID Slots

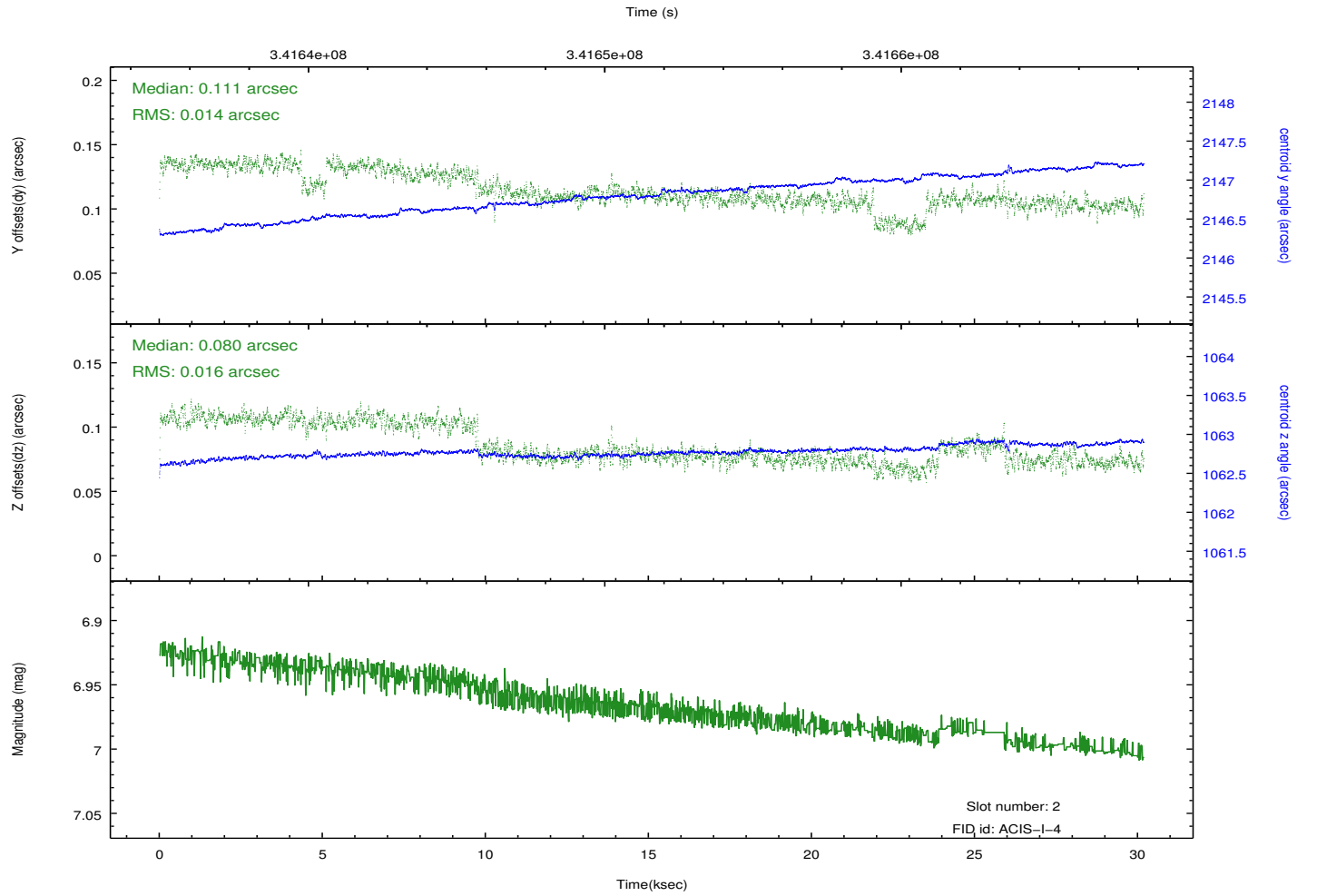
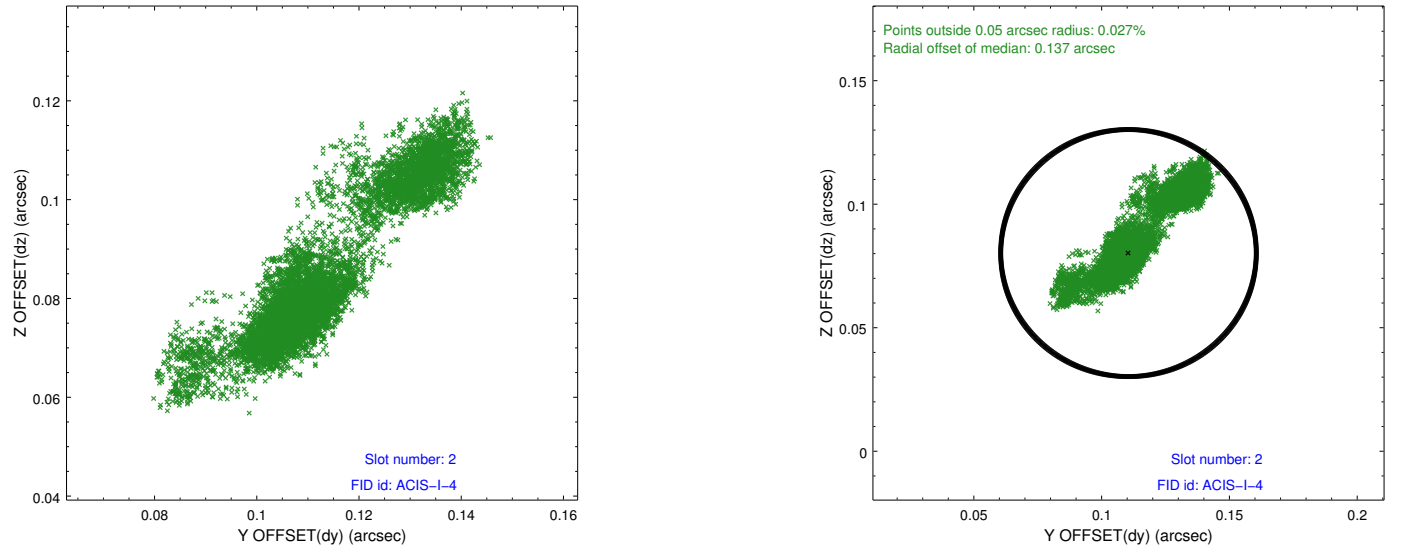
2.5.1 Slot 0



2.5.2 Slot 1



2.5.3 Slot 2



A Summary

A.1 Status

V&V Scientist	Jen Lauer
V&V Date (YYYY-MM-DD)	2012.06.01
V&V Edition	1
V&V Disposition and Status	OK
V&V Charge Time	30.1791998

A.2 Comments

Joint Proposal: NRAO. Window constraint met.