

V&V Reference Report

L2 ASCDS Version : 7.6.10

Observation 828 - L2 Version 001
Chandra X-Ray Center

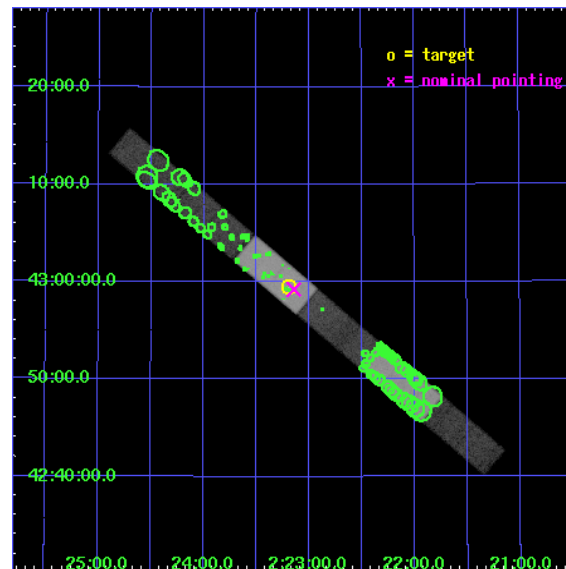
L2 Processing Date : Jun 16 2007

Contents

1	Front	2
2	OBI	3
2.1	OBI	3
2.1.1	Images	3
2.1.2	Bias	3
2.1.3	Parameters	4
2.1.4	Events	4
2.2	Compared Parameters	5
2.3	Aspect	6
2.4	Star Slots	9
2.4.1	Slot 3	9
2.4.2	Slot 4	10
2.4.3	Slot 5	11
2.4.4	Slot 6	12
2.4.5	Slot 7	13
2.5	FID Slots	14
2.5.1	Slot 0	14
2.5.2	Slot 1	15
2.5.3	Slot 2	16
3	Point Sources	17
A	Summary	18
A.1	Status	18
A.2	Comments	18

1 Front

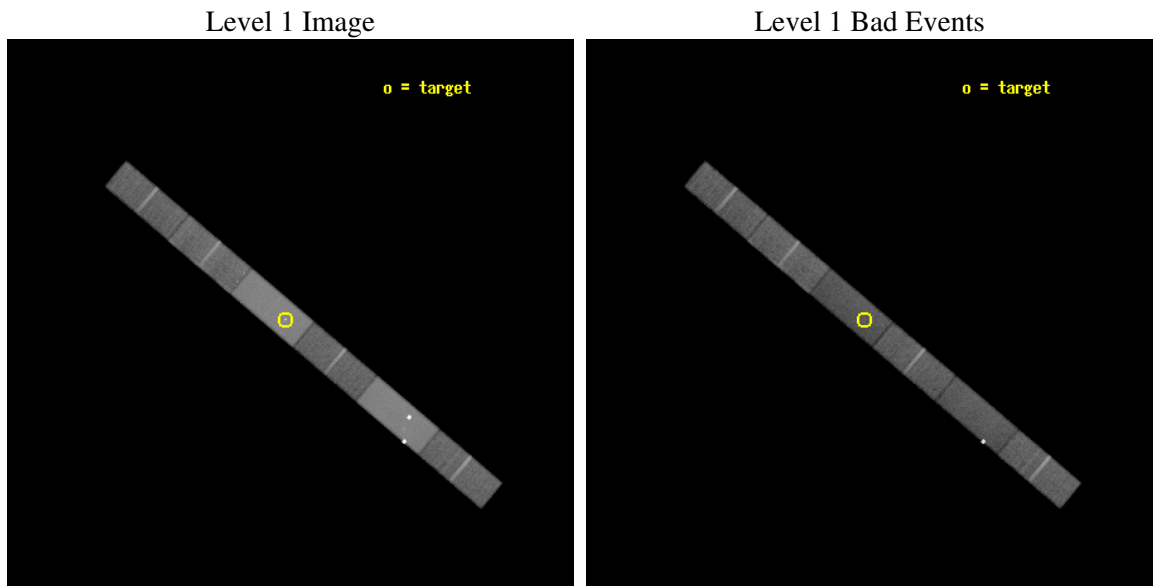
seq_num	700133
obs_id	828
title	X-RAY EMISSION FROM THE OPTICAL JET OF THE RADIO GALAXY 3C 66B: TESTING THEORIES OF PARTICLE ACCELERATION
observer	Dr Martin Hardcastle
object	3C 66B
dtcycle	0
cycle	P
ra_targ	35.797917
dec_targ	42.992056
ra_nom	35.786209126658
dec_nom	42.987163375176
roll_nom	220.16459816275
revision	2
ontime	45169.007828996
livetime	43966.095457284
ontime4	45170.548799232
ontime5	45169.007809073
ontime6	45170.548799232
ontime7	45169.007828996
ontime8	45170.548819155
ontime9	45170.548799232
l2events	468191



2 OBI

2.1 OBI

2.1.1 Images

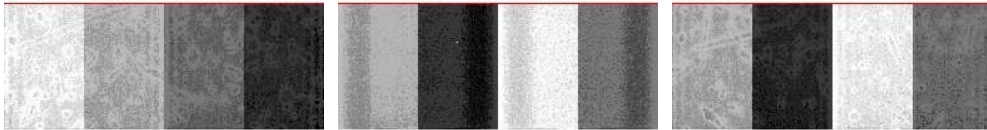


2.1.2 Bias

Chip 4

Chip 5

Chip 6



Chip 7

Chip 8

Chip 9



2.1.3 Parameters

obi_num	0
ascdsver	7.6.10
caldsver	3.4.0
date	2007-06-16T21:25:40
revision	2

sched_exp_time	45008.025000
ontime	45169.007828996
ontime4	45170.548799232
ontime5	45169.007809073
ontime6	45170.548799232
ontime7	45169.007828996
ontime8	45170.548819155
ontime9	45170.548799232
l1events	1214933

2.1.4 Events

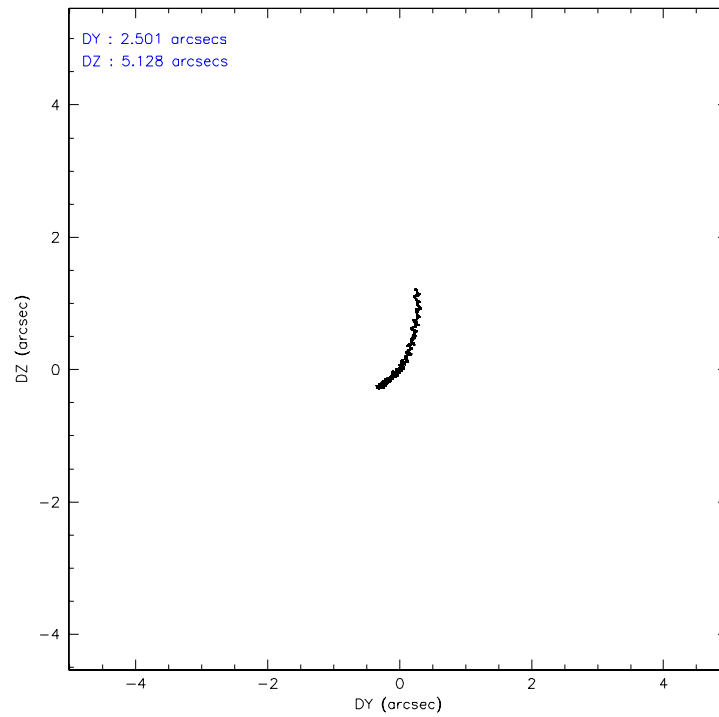
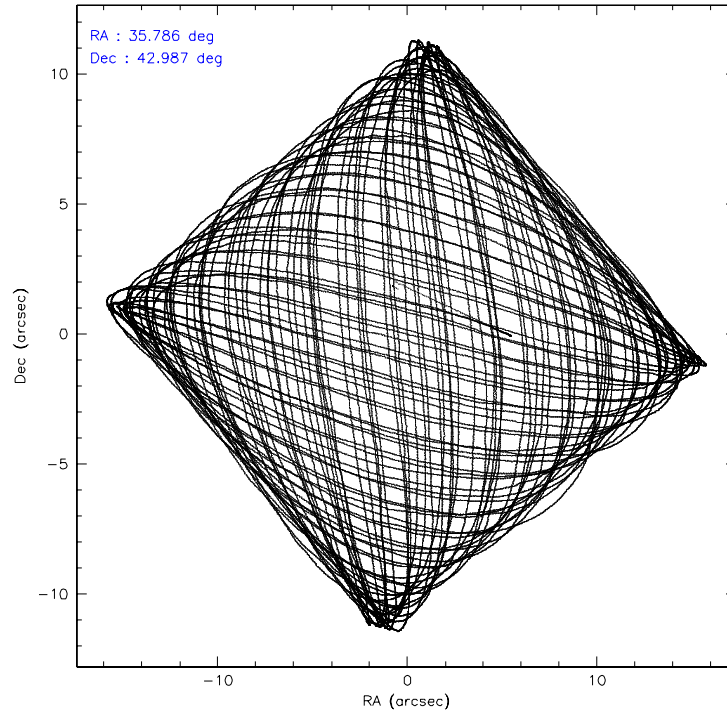
	ccd 4	ccd 5	ccd 6	ccd 7	ccd 8	ccd 9
level 1 events	146925	339600	137800	291894	167880	130834
rejected events	126436	109337	113474	84108	131102	110240
rejected %	86%	32%	82%	28%	78%	84%

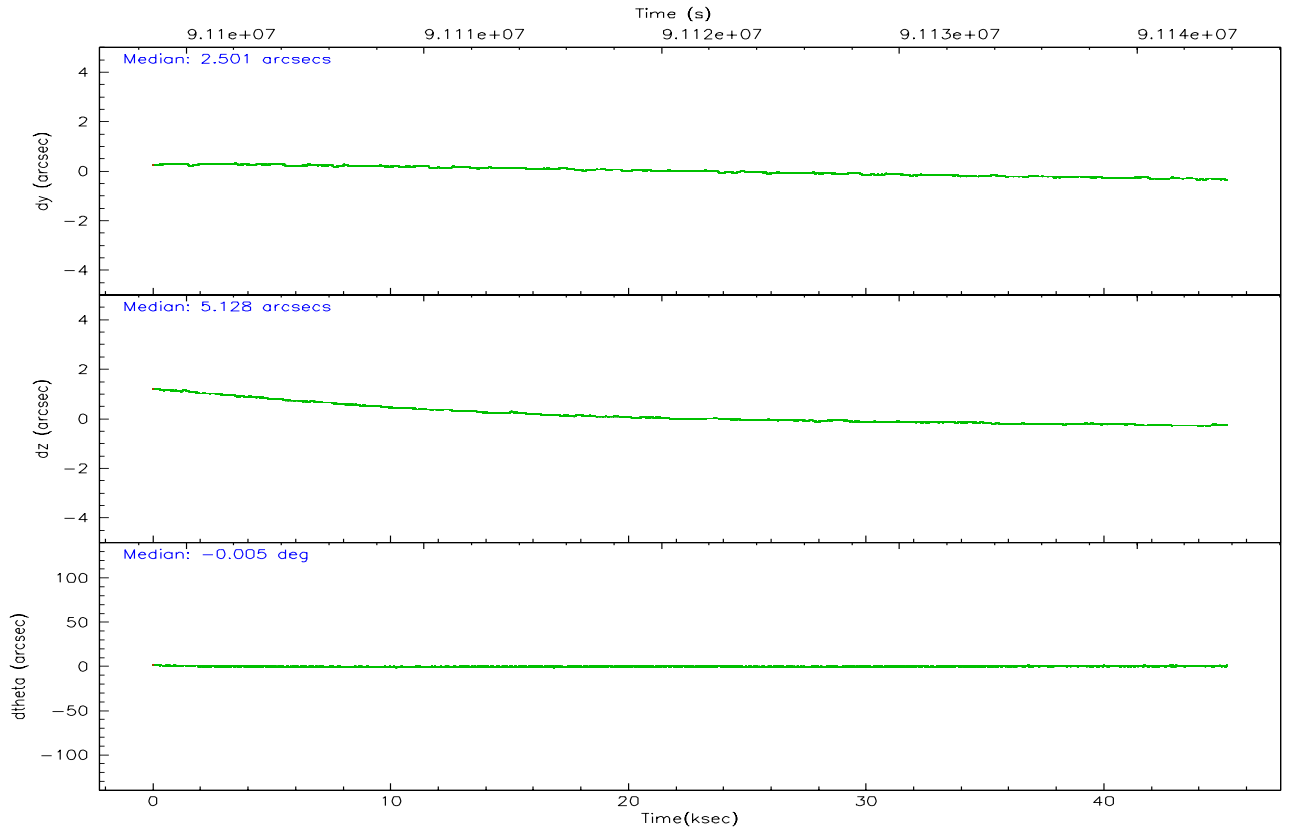
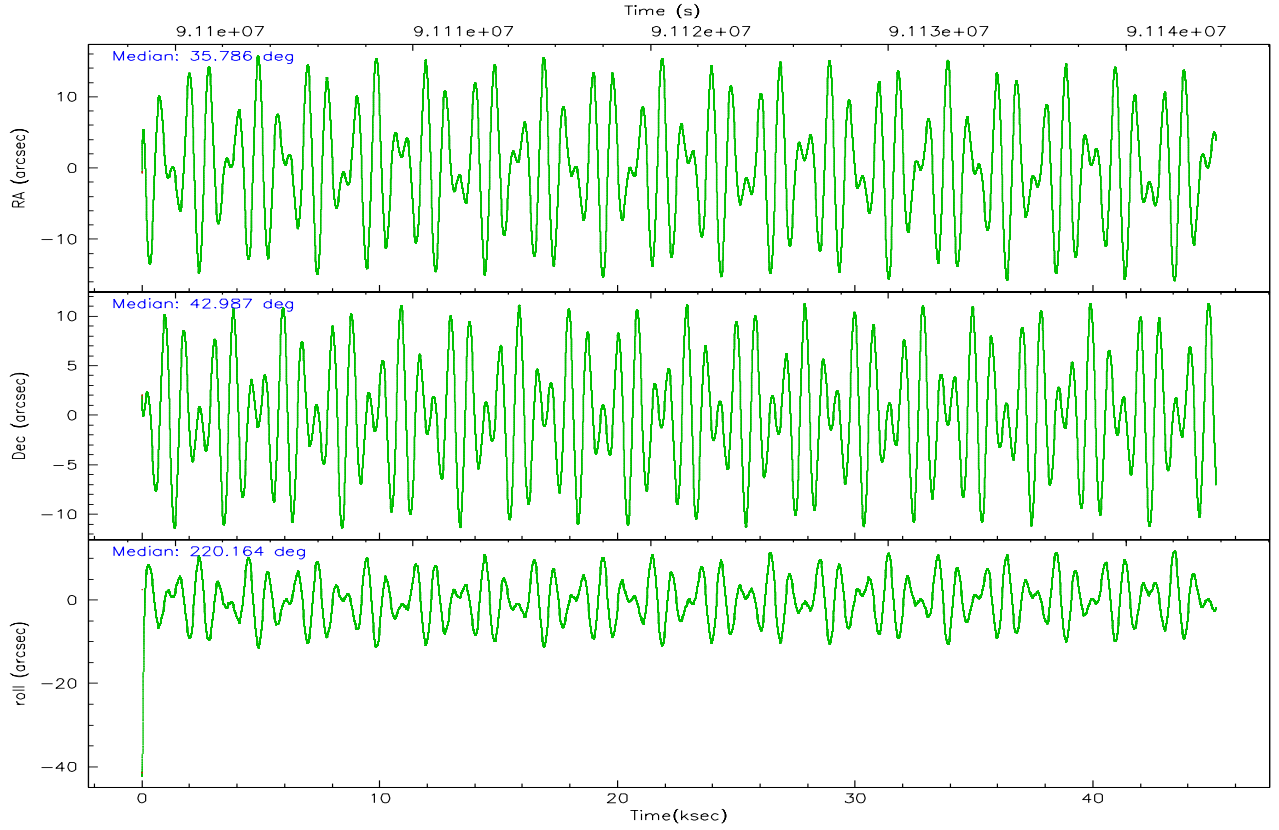
	ccd 4	ccd 5	ccd 6	ccd 7	ccd 8	ccd 9
grade 0 events	10629	62899	14470	28721	16007	11221
	7%	18%	10%	9%	9%	8%
grade 1 events	53	353	43	161	78	44
	0%	0%	0%	0%	0%	0%
grade 2 events	4039	58428	3586	40906	6895	3281
	2%	17%	2%	14%	4%	2%
grade 3 events	1865	16124	1953	18745	3384	1855
	1%	4%	1%	6%	2%	1%
grade 4 events	1677	12991	1852	18673	3225	1824
	1%	3%	1%	6%	1%	1%
grade 5 events	4029	24518	4726	14243	5810	4703
	2%	7%	3%	4%	3%	3%
grade 6 events	2463	81267	2659	101557	7620	2606
	1%	23%	1%	34%	4%	1%
grade 7 events	122170	83020	108511	68888	124861	105300
	83%	24%	78%	23%	74%	80%

2.2 Compared Parameters

Parameter	Planned	Actual	Parameter	Planned	Actual
Instrument	ACIS	ACIS	Obspar format version number	6	6
Detector	ACIS-456789	ACIS-456789	Obspar file type	PREDICTED	ACTUAL
Grating	NONE	NONE	Obspar update status	NONE	UPDATED
Data mode	FAINT	FAINT	Number of optional ACIS chips dropped	0	0
Observation mode	POINTING	POINTING	On-chip summing requested	N	N
Pointing RA	35.798632	35.78620912665761	Subarray requested	CUSTOM	CUSTOM
Pointing Dec	43.012947	42.98716337517567	Subarray start row	312	312
Pointing Roll	219.999504	220.1645981627545	Subarray row count	400	400
SIM focus pos (mm)	-0.684267	-0.6828225247311905	Alternating exposures requested	N	N
SIM defocus (mm)	0	0.001444936568705701	Primary exposure time	0.000000	1.5
SIM translation stage pos (mm)	-190.132523	-190.1425803651734			
SIM translation stage offset (mm)	0	0.01005778216563158			
Observation start time	91098784.184000	91097682.763776			
Observation start date	2000-11-20T09:12:00	2000-11-20T08:54:42			
Observation end time	91143792.184000	91144106.040549			
Observation end date	2000-11-20T21:42:08	2000-11-20T21:48:26			
Read mode	TIMED	TIMED			

2.3 Aspect



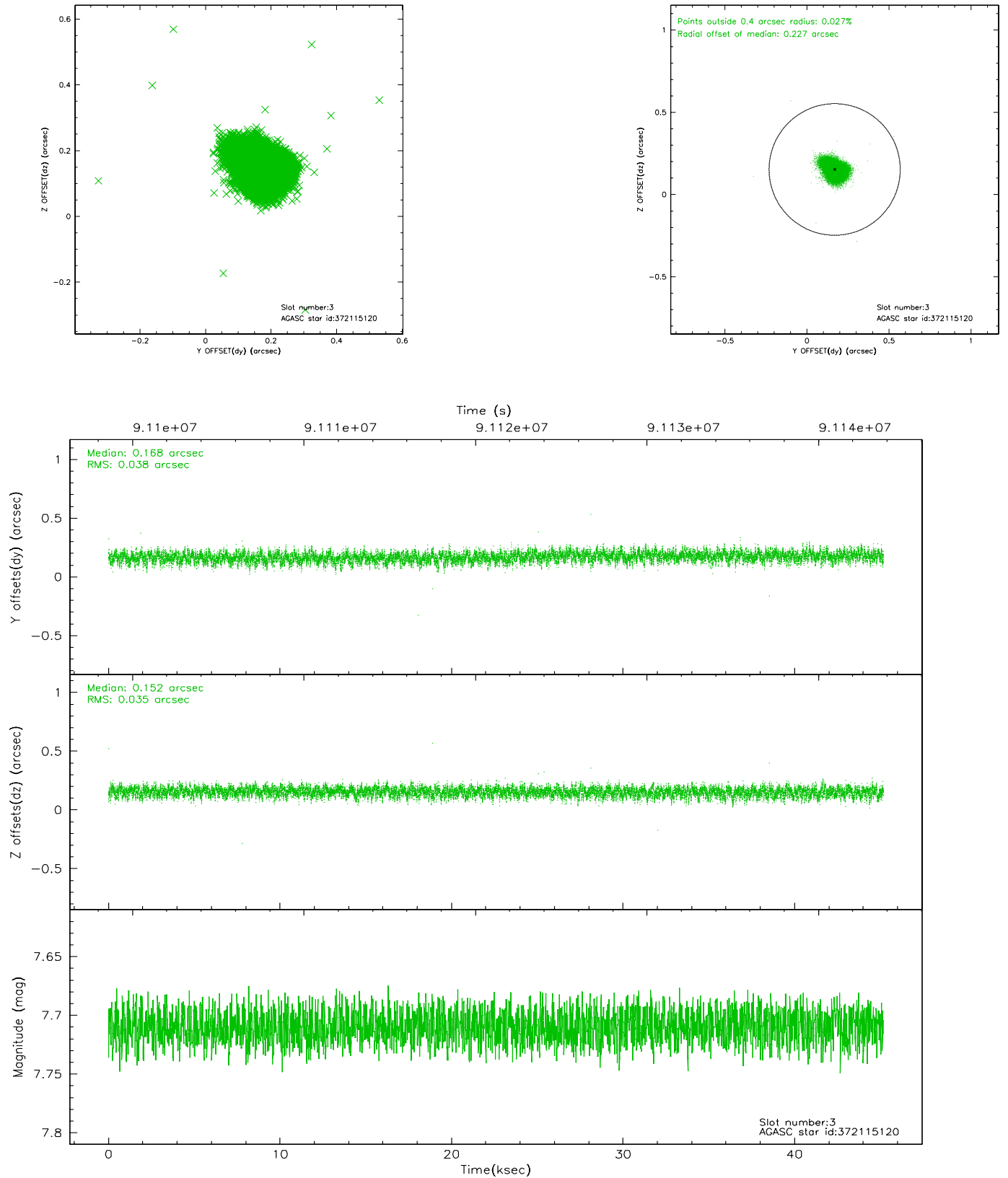


Slot Statistics

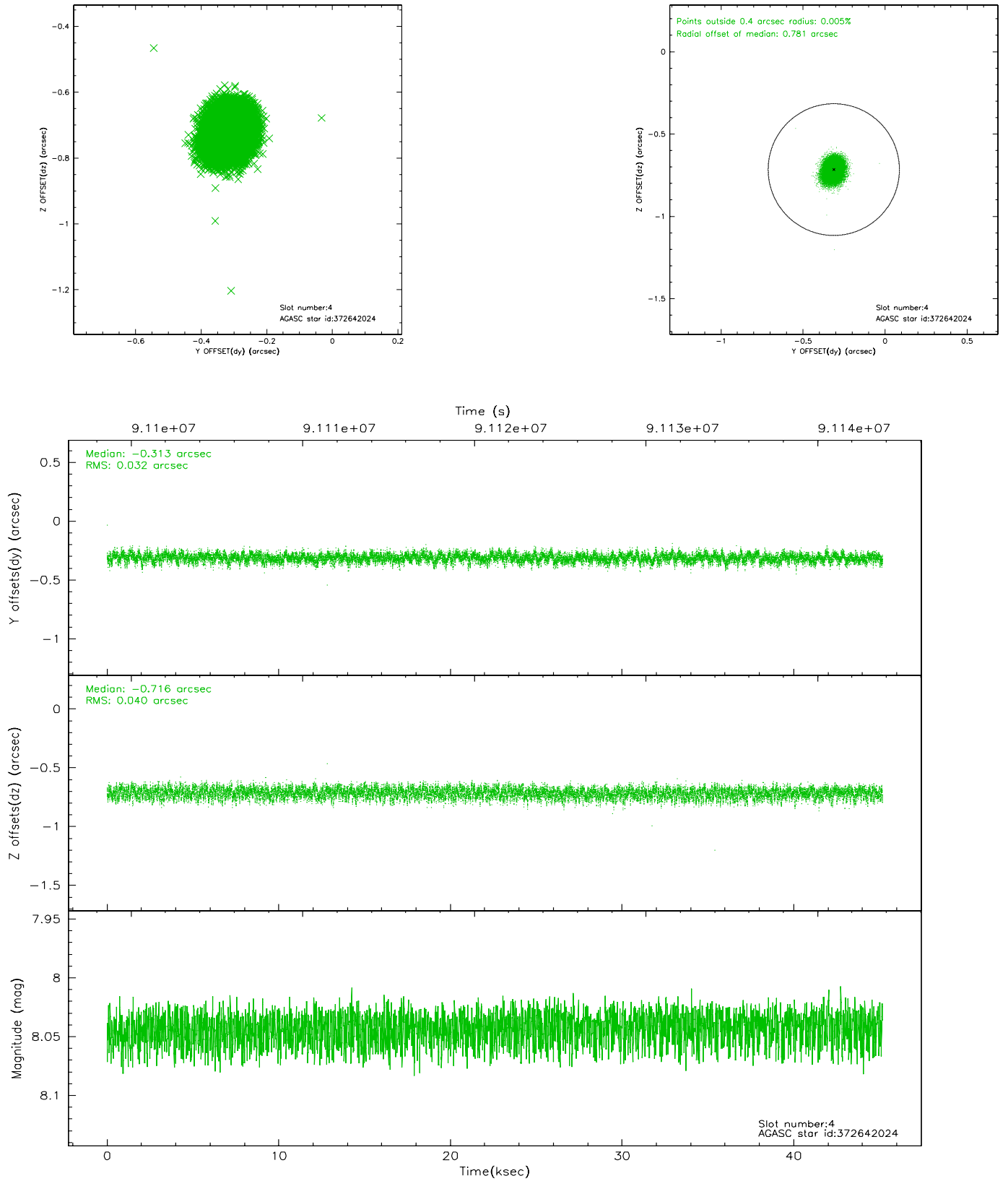
slot	status	id	mag	n_pts	med_dy	med_dz	dr1	dr2	ra	dec	mean_y	mean_z
0	FID	ACIS-S-2	7.11	11018	-0.021	0.026	0.017	0.025	0.000000	0.000000	-755.13	-1726.34
1	FID	ACIS-S-4	7.21	11017	-0.065	0.003	0.022	0.029	0.000000	0.000000	2158.09	182.16
2	FID	ACIS-S-5	7.24	11017	0.050	-0.019	0.014	0.021	0.000000	0.000000	-1807.93	175.76
3	GUIDE	372115120	7.71	22033	0.168	0.152	0.055	0.089	35.261123	42.943957	1242.33	-722.48
4	GUIDE	372642024	8.04	22034	-0.313	-0.716	0.055	0.088	35.710546	43.517454	-991.27	-1538.97
5	GUIDE	372642296	7.63	22032	-0.016	0.245	0.049	0.077	36.293649	43.545428	-2223.86	-639.96
6	GUIDE	372642872	8.72	22031	0.050	0.133	0.057	0.095	36.621364	43.186601	-2062.71	902.23
7	GUIDE	372125032	8.72	22034	0.112	0.189	0.056	0.093	35.265346	42.773671	1630.81	-247.93

2.4 Star Slots

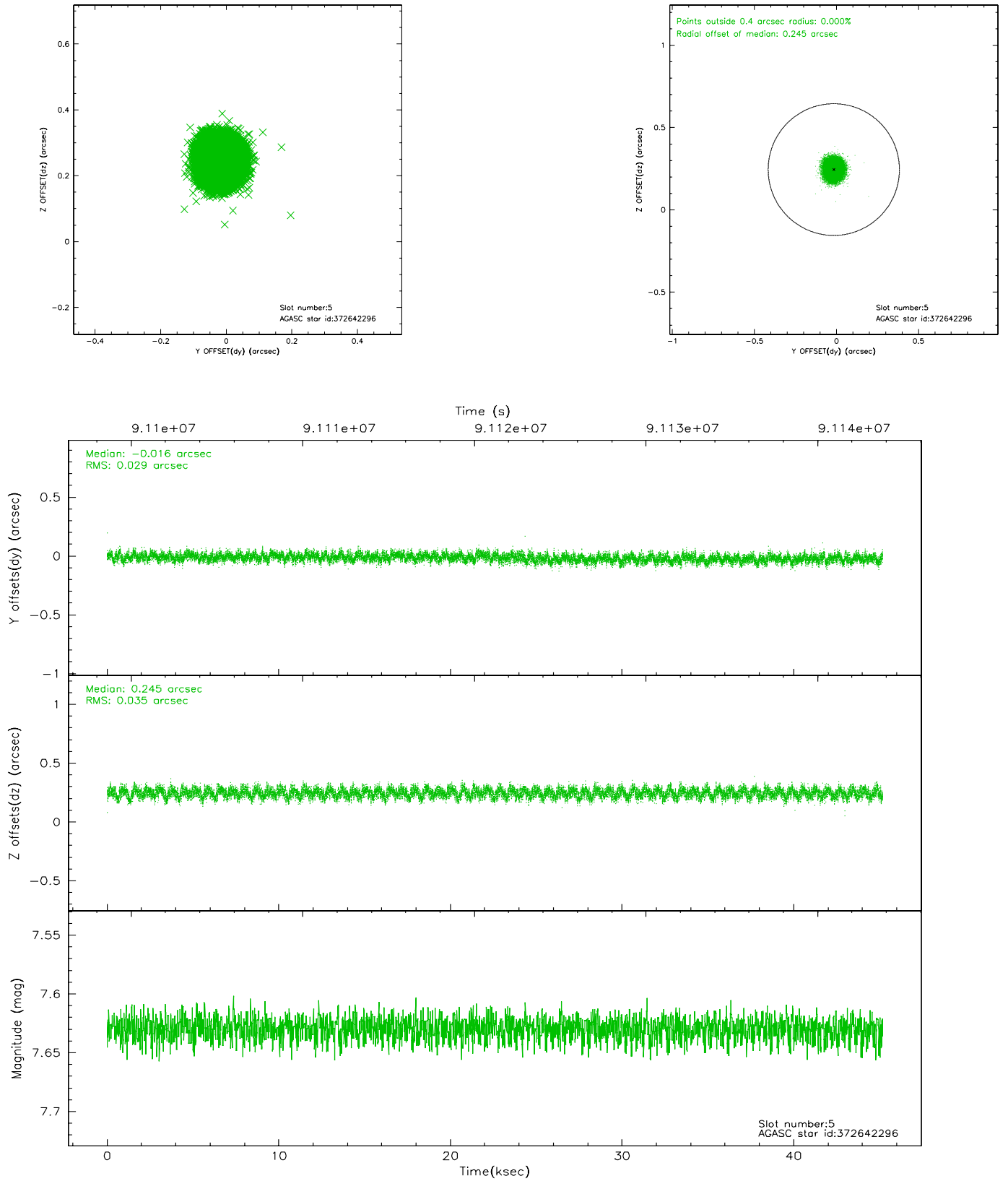
2.4.1 Slot 3



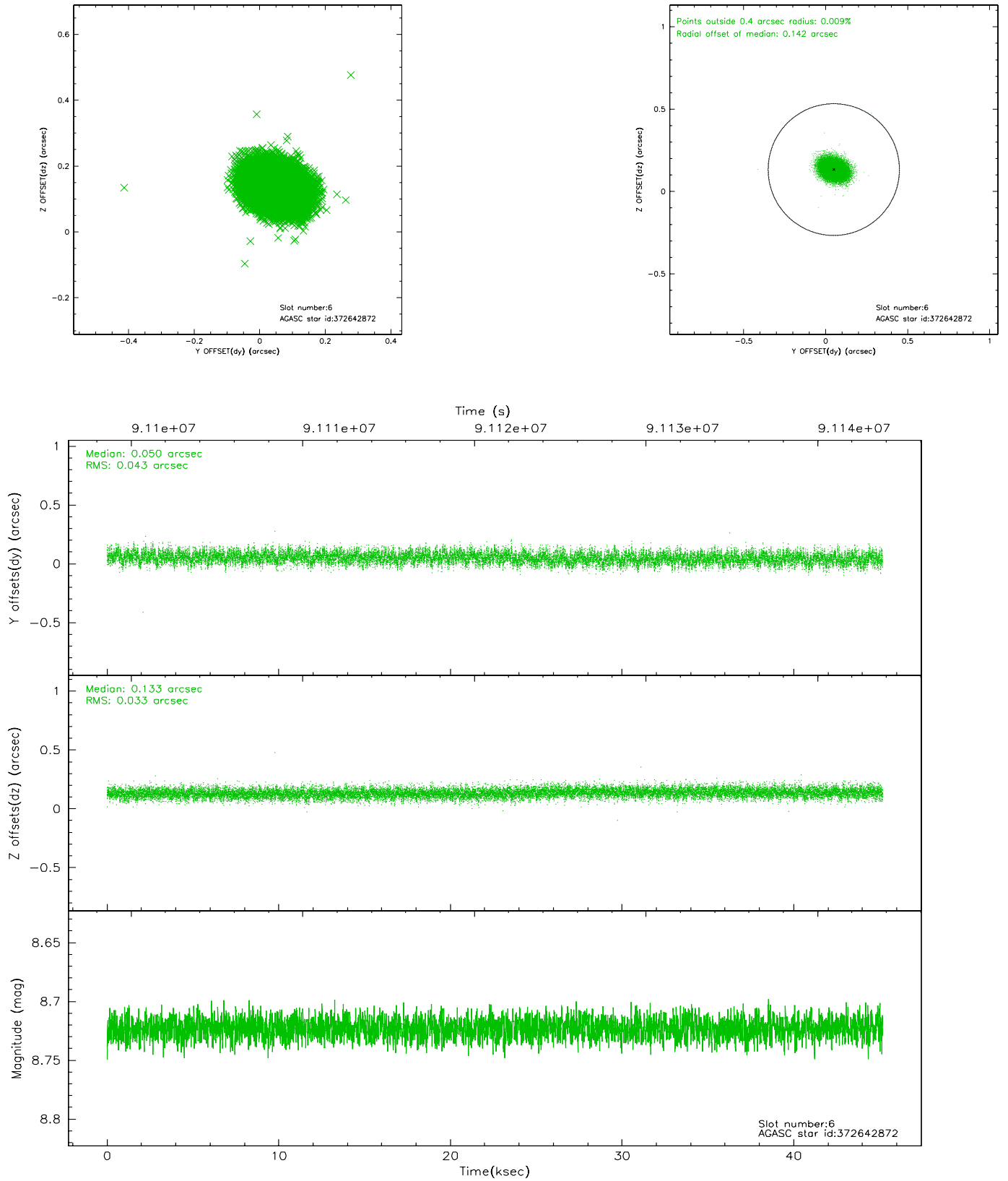
2.4.2 Slot 4



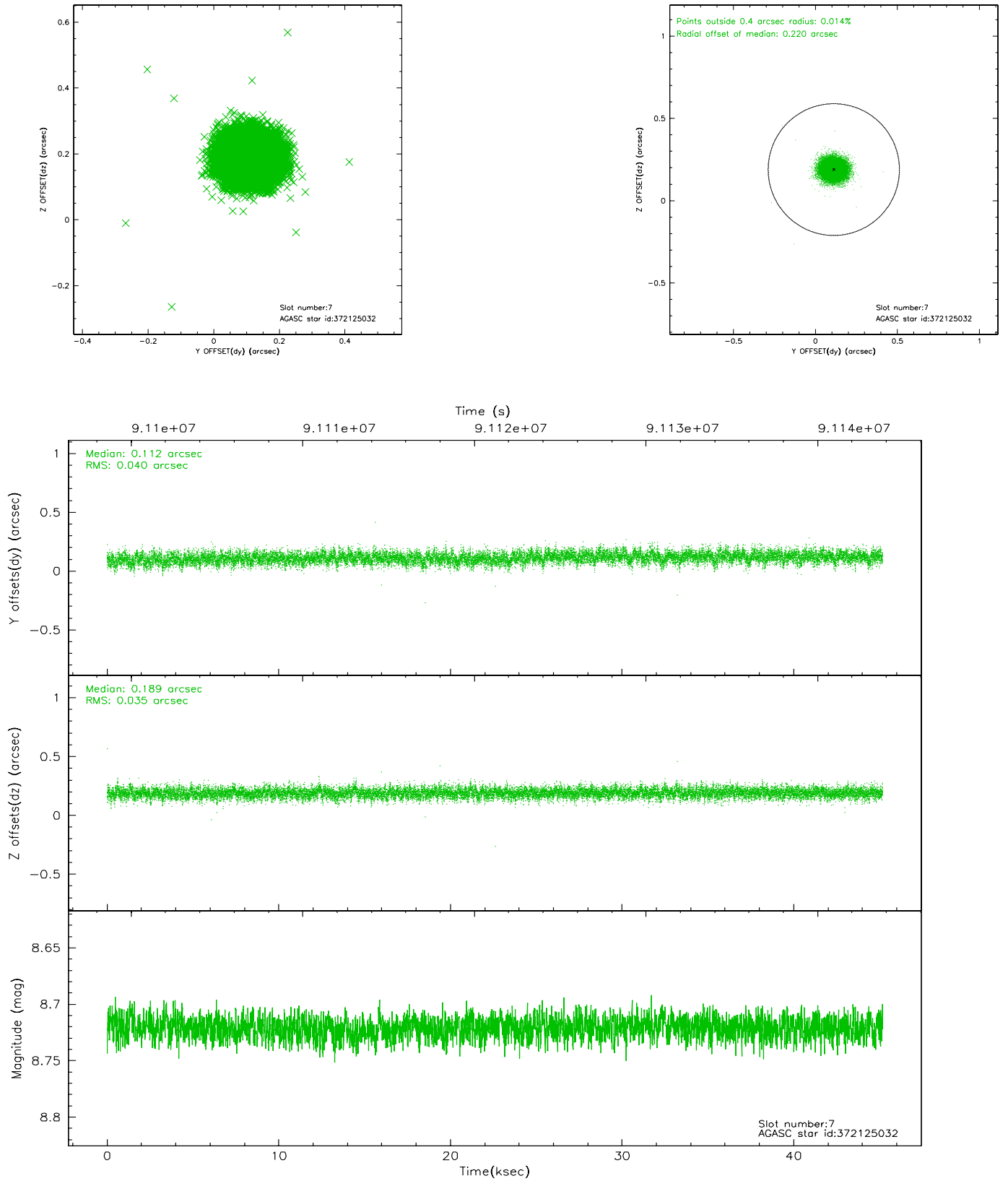
2.4.3 Slot 5



2.4.4 Slot 6

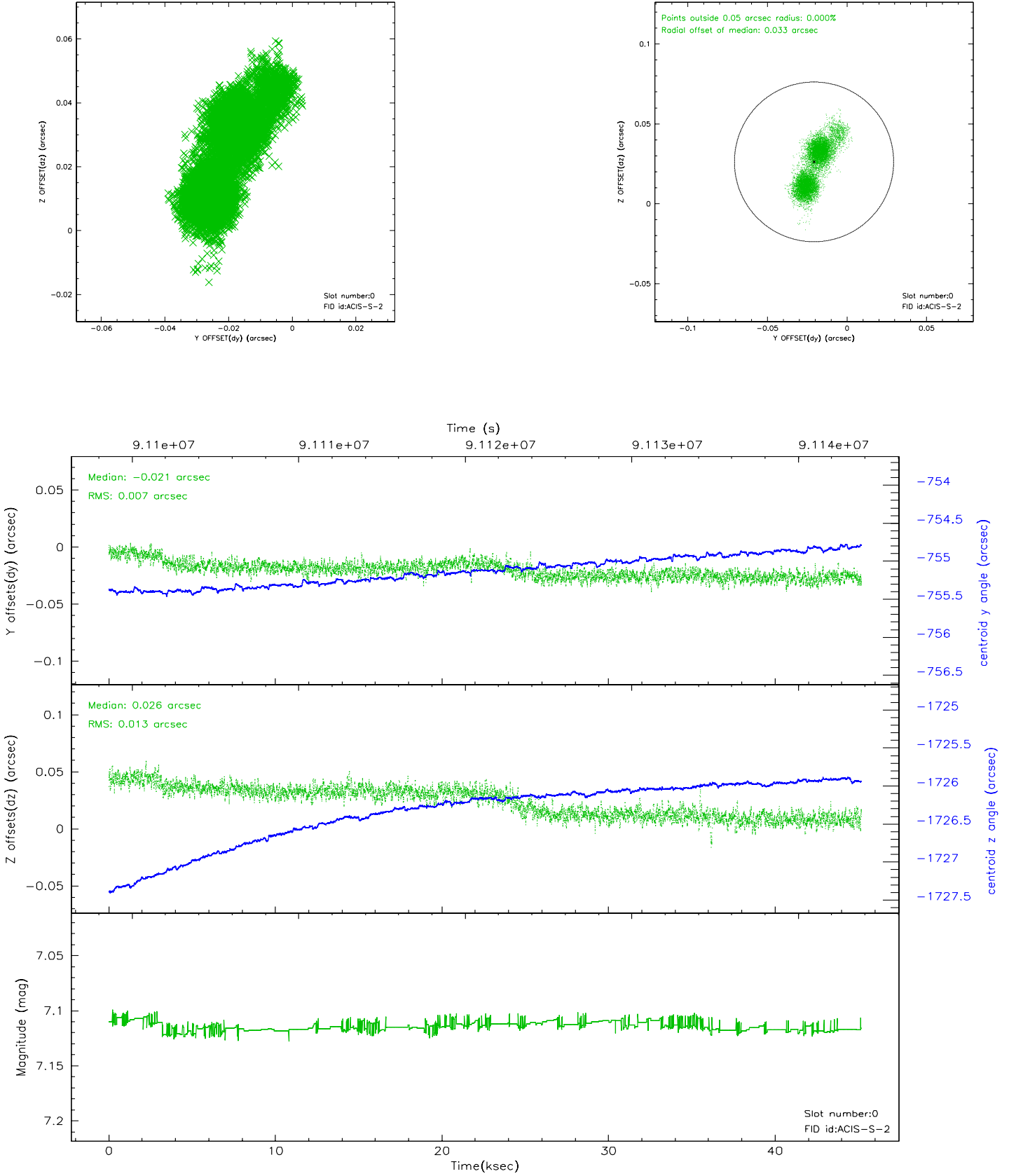


2.4.5 Slot 7

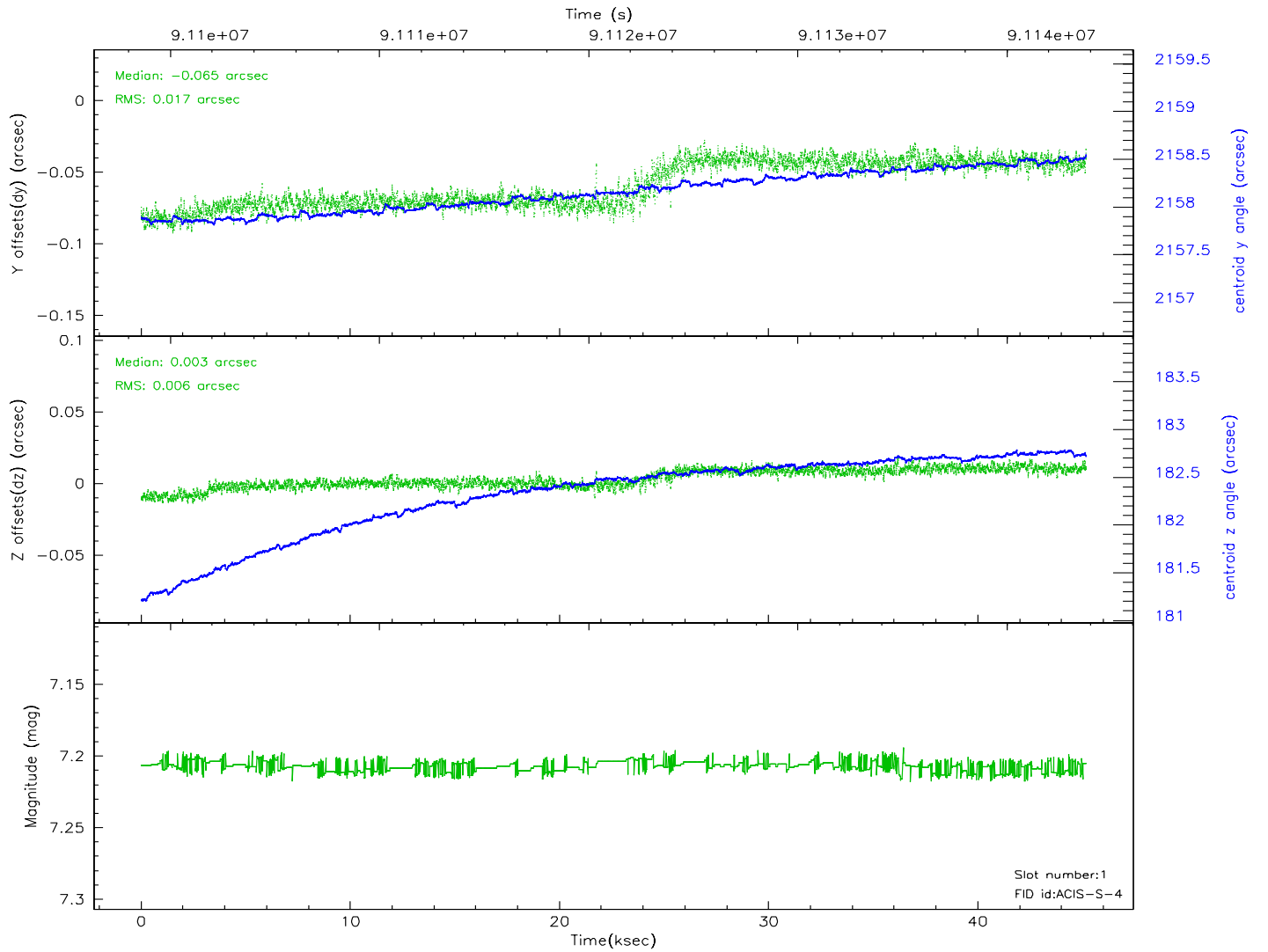
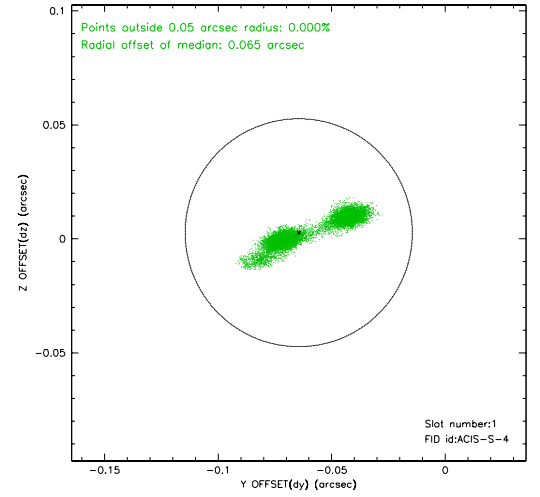
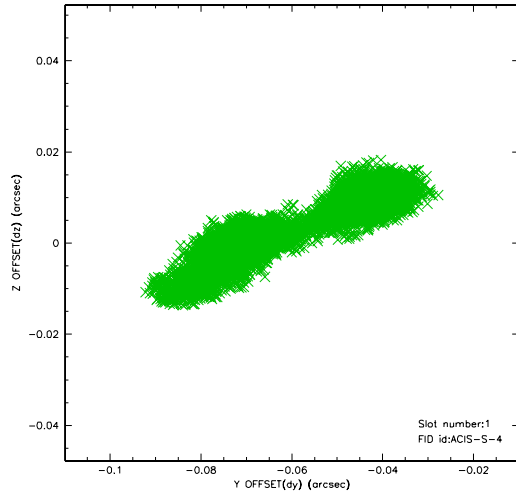


2.5 FID Slots

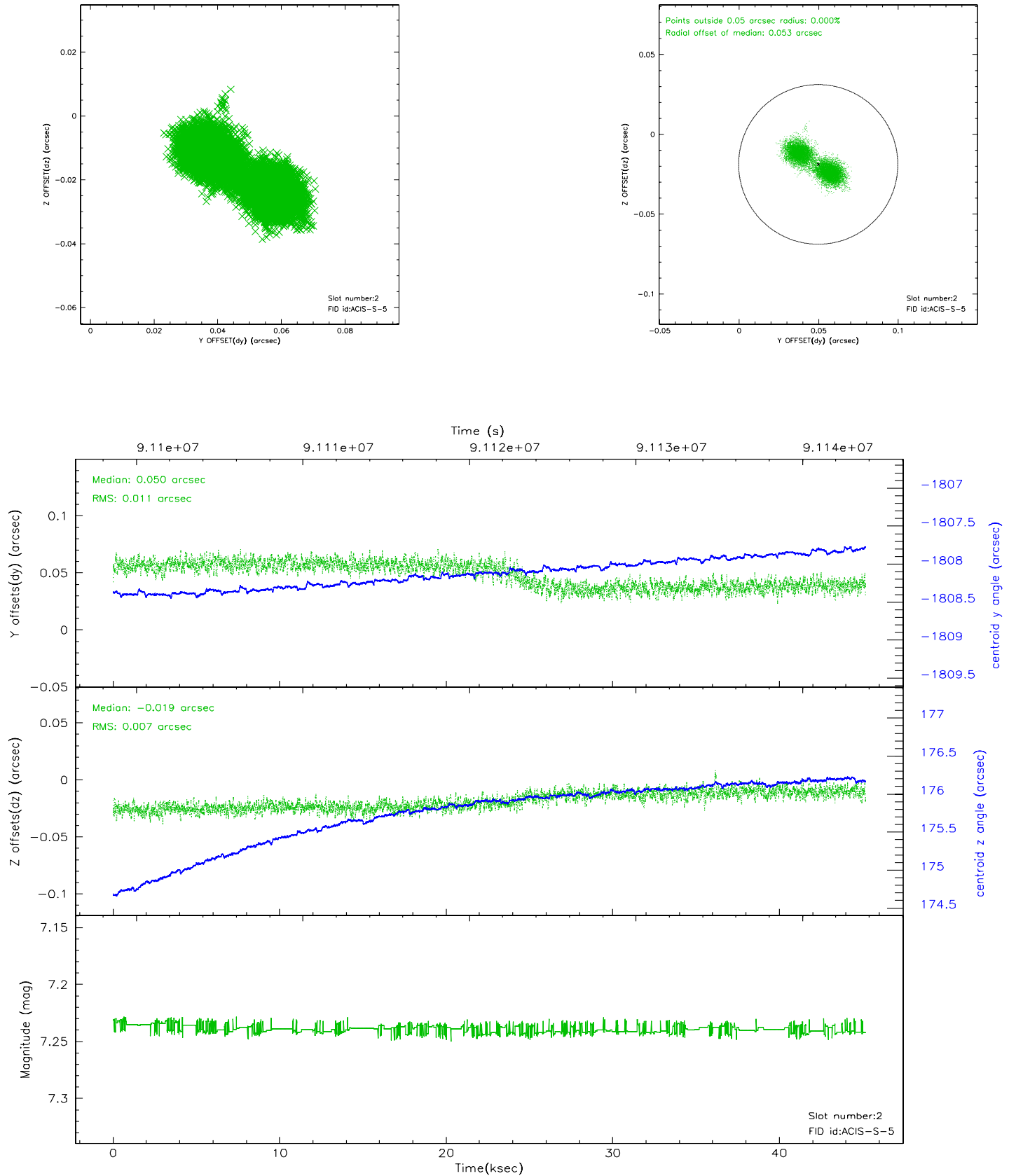
2.5.1 Slot 0



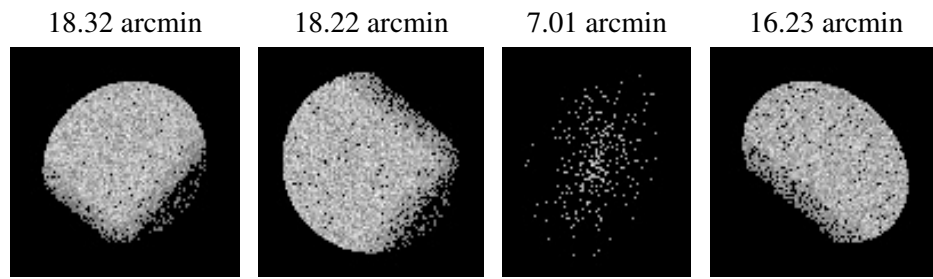
2.5.2 Slot 1



2.5.3 Slot 2



3 Point Sources



A Summary

A.1 Status

V&V Scientist	Beth Sundheim
V&V Date (YYYY-MM-DD)	2007.06.18
V&V Edition	1
V&V Disposition and Status	OK
V&V Charge Time	45.169

A.2 Comments