

V&V Reference Report

L2 ASCDS Version : 8.4.4

Observation 8168 - L2 Version 2
Chandra X-Ray Center

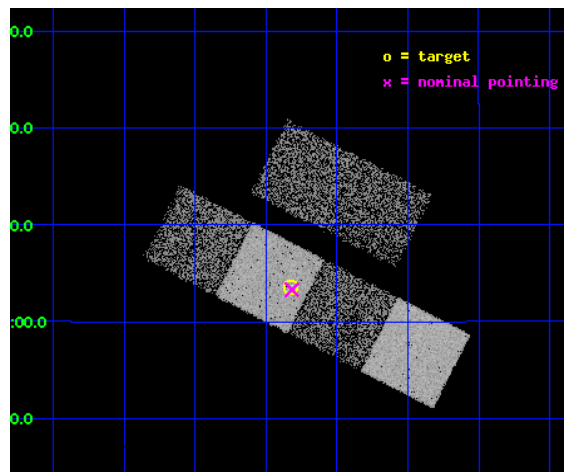
L2 Processing Date : Apr 28 2012

Contents

1	Front	2
2	OBI	3
2.1	OBI	3
2.1.1	Images	3
2.1.2	Bias	3
2.1.3	Parameters	4
2.1.4	Events	4
2.2	Compared Parameters	5
2.3	Aspect	6
2.4	Star Slots	9
2.4.1	Slot 3	9
2.4.2	Slot 4	10
2.4.3	Slot 5	11
2.4.4	Slot 6	12
2.4.5	Slot 7	13
2.5	FID Slots	14
2.5.1	Slot 0	14
2.5.2	Slot 1	15
2.5.3	Slot 2	16
A	Summary	17
A.1	Status	17
A.2	Comments	17

1 Front

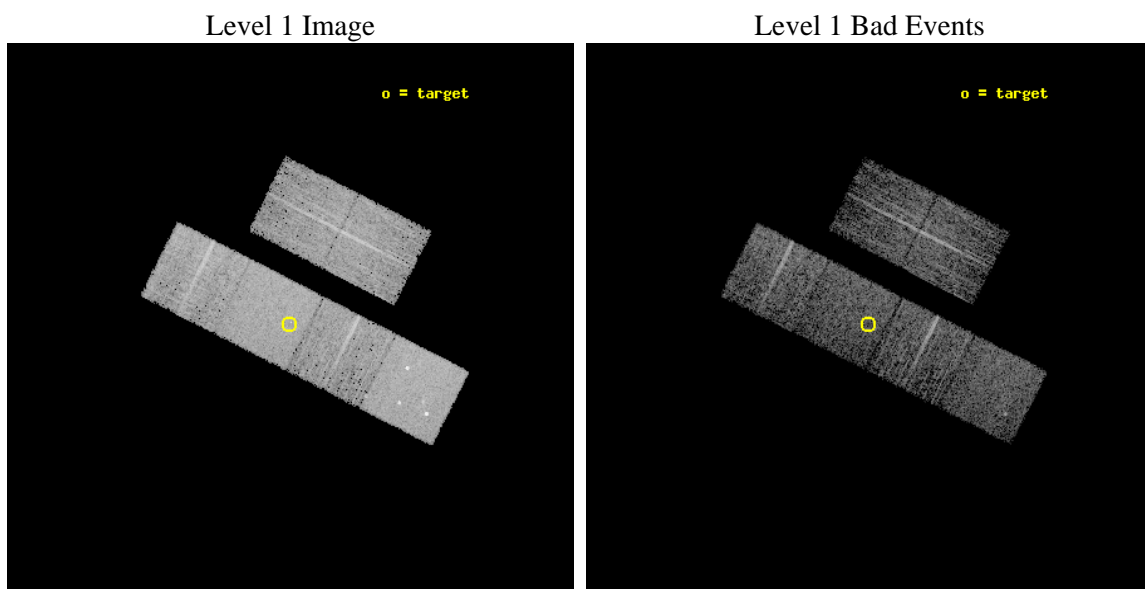
seq_num	900709	Sequence number
obs_id	8168	Observation id
title	ChICAGO GTO: Chandra Identification of Compact ASCA Galactic Objects	
observer	Dr. Stephen Murray	Principal investigator
object	AX J190749+0803	Source name
dtcycle	0	
cycle	P	events from which exps? Prim/Second/Both
ra_targ	286.957083	Observer's specified target RA [deg]
dec_targ	8.059	Observer's specified target Dec [deg]
ra_nom	286.95439207446	Nominal RA [deg]
dec_nom	8.0547579338804	Nominal Dec [deg]
roll_nom	206.9749061386	Nominal Roll [deg]
revision	2	Processing version of data
ontime	3251.1999879479	Sum of GTIs [s]
livetime	3210.0313360629	Livetime [s]
ontime2	3251.1999879479	Sum of GTIs [s]
ontime3	3251.1999879479	Sum of GTIs [s]
ontime5	3251.1999879479	Sum of GTIs [s]
ontime6	3251.1999879479	Sum of GTIs [s]
ontime7	3251.1999879479	Sum of GTIs [s]
ontime8	3251.1999879479	Sum of GTIs [s]
l2events	50976	Number of level 2 events



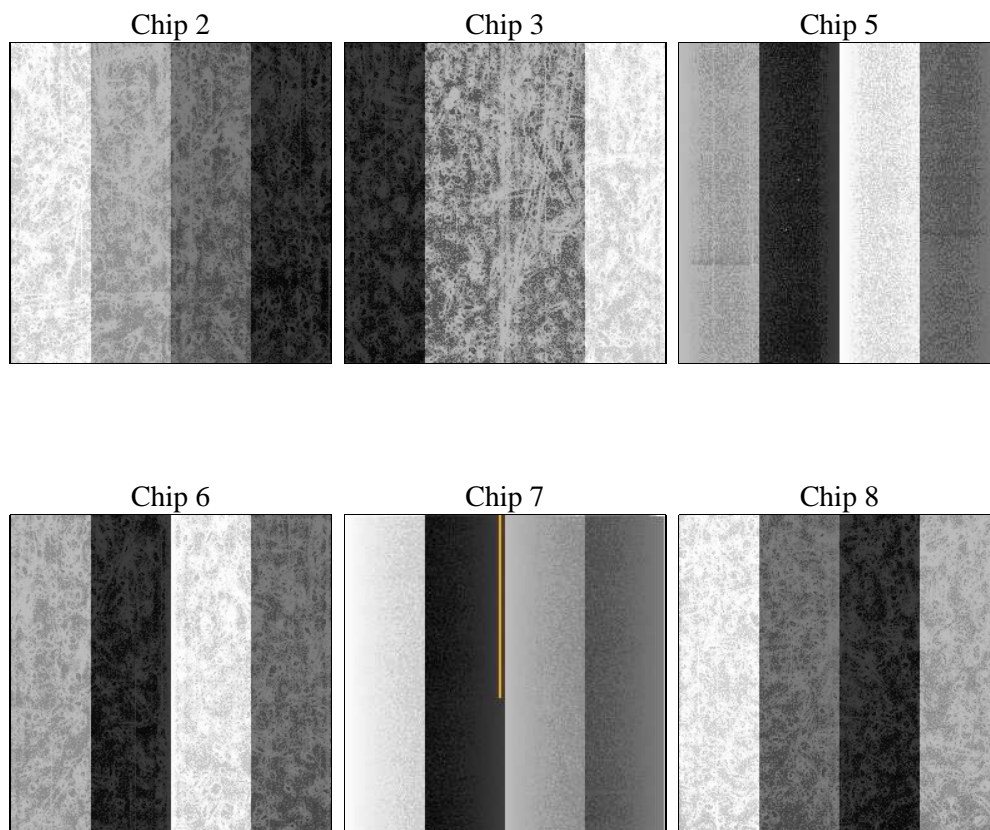
2 OBI

2.1 OBI

2.1.1 Images



2.1.2 Bias



2.1.3 Parameters

obi_num	0	Obi number	sched_exp_time	3300.000000	[s] Scheduled observation exposure time
ascdsver	8.4.4	Processing system revision	ontime	3251.1999879479	Sum of GTIs [s]
caldsver	4.4.9	 	ontime2	3251.1999879479	Sum of GTIs [s]
date	2012-04-28T14:06:04	Date and time of file creation	ontime3	3251.1999879479	Sum of GTIs [s]
revision	2	Processing version of data	ontime5	3251.1999879479	Sum of GTIs [s]
			ontime6	3251.1999879479	Sum of GTIs [s]
			ontime7	3251.1999879479	Sum of GTIs [s]
			ontime8	3251.1999879479	Sum of GTIs [s]
			l1events	228161	Number of level 1 events

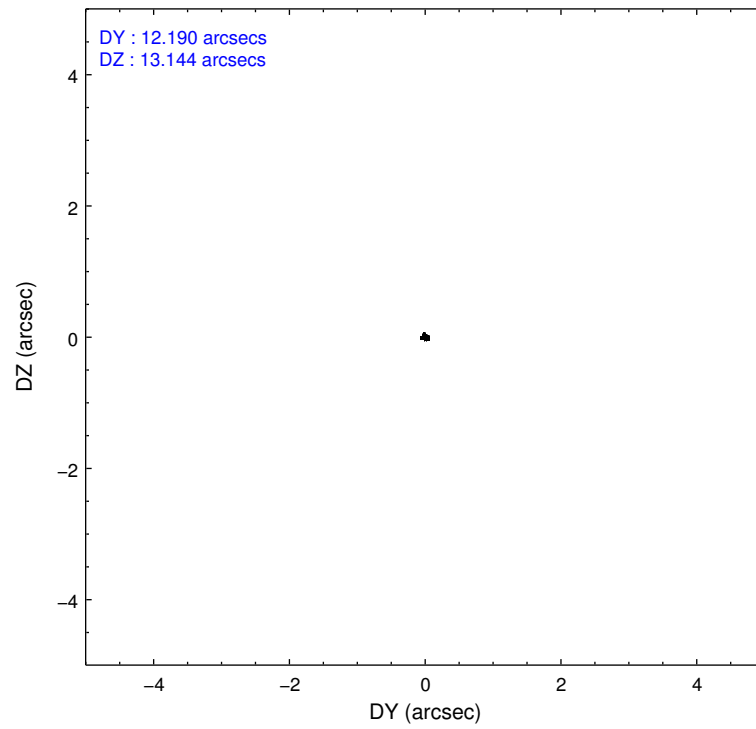
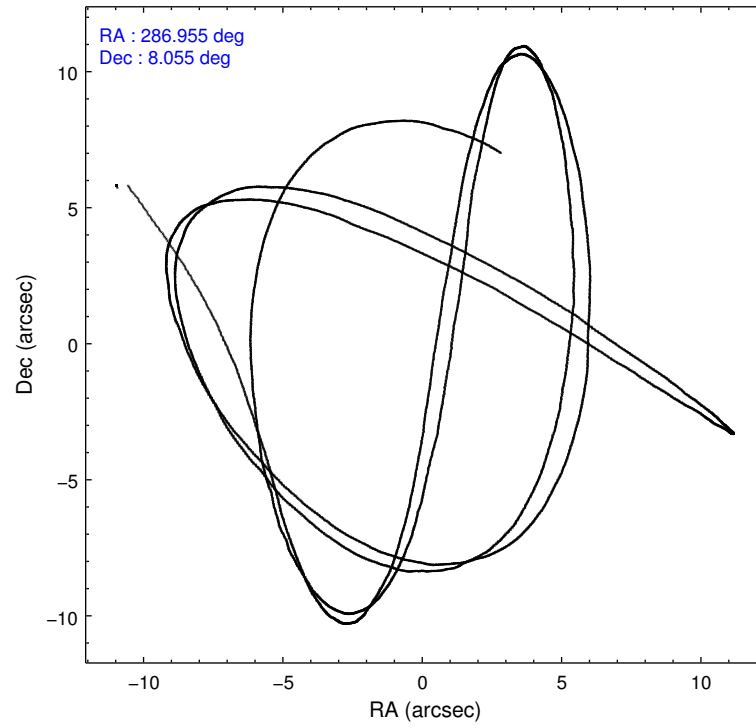
2.1.4 Events

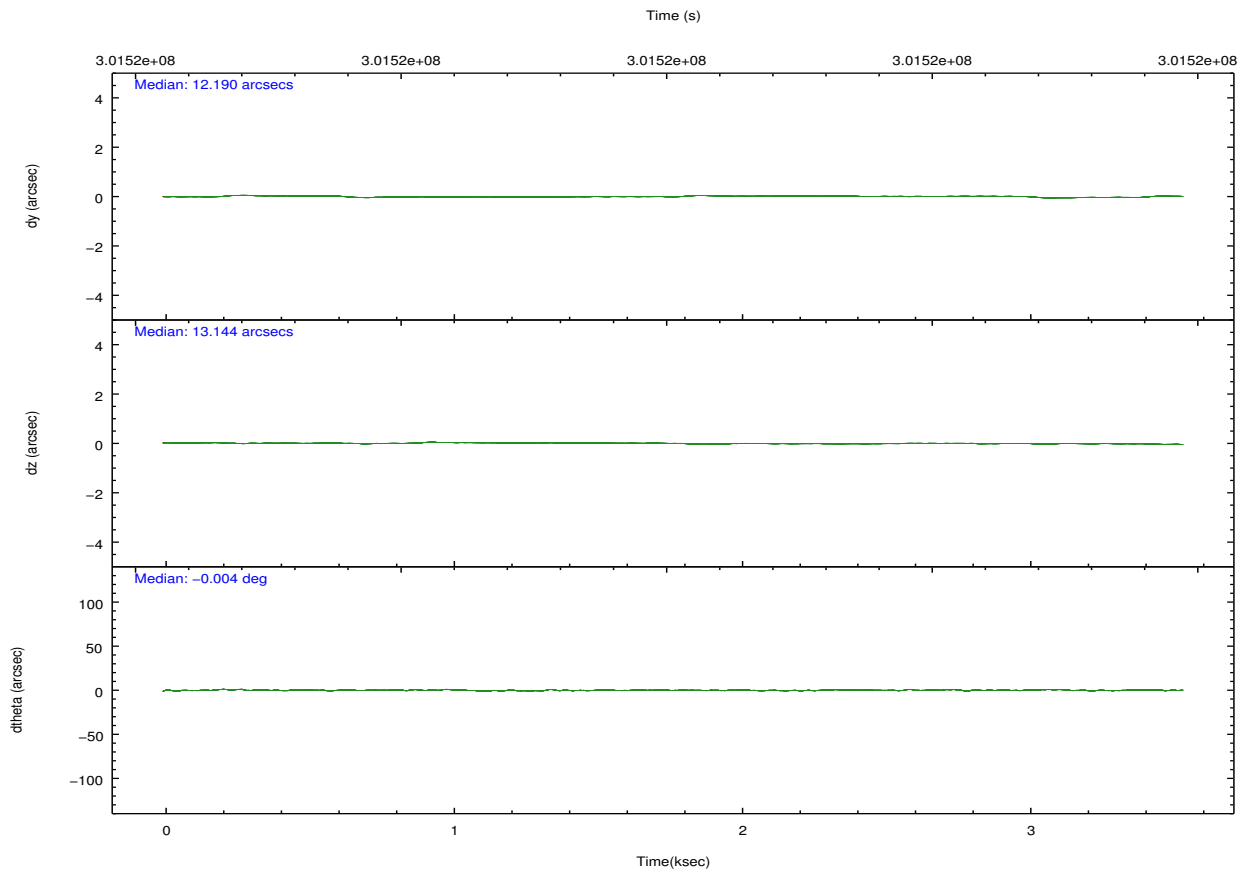
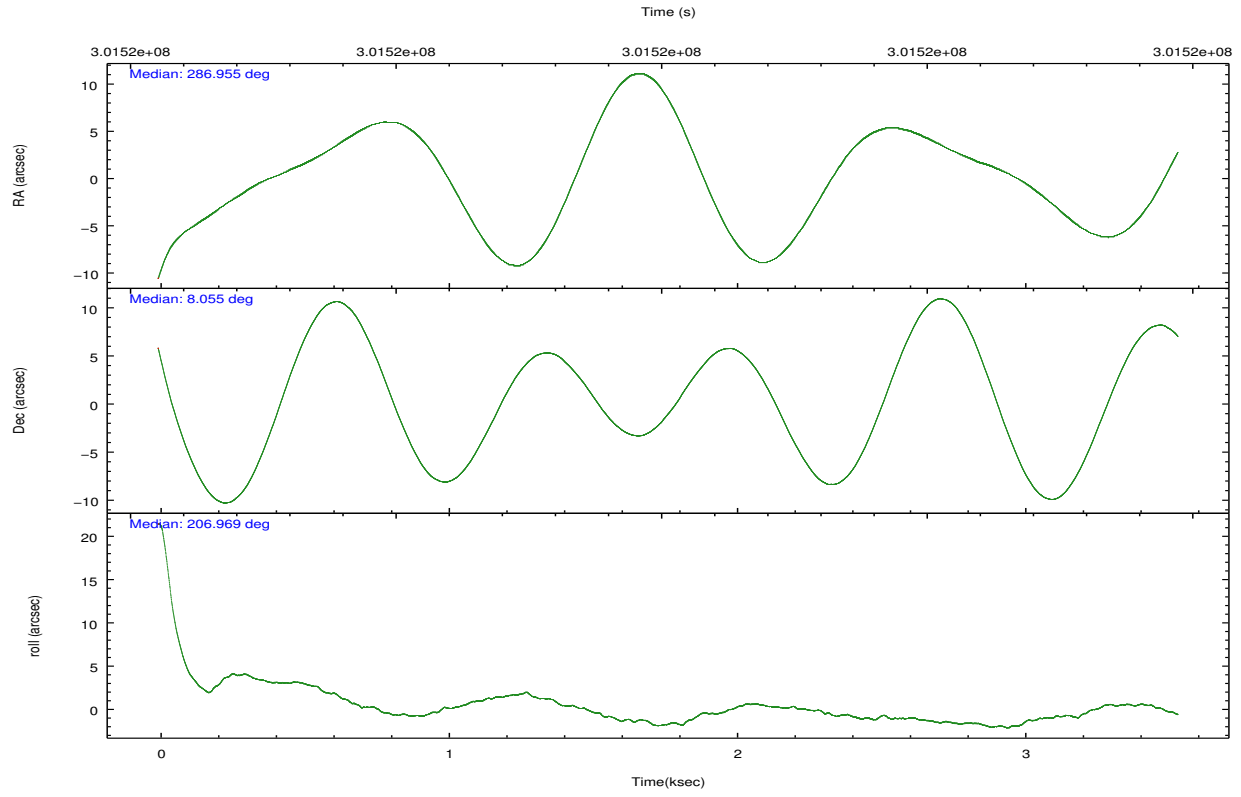
	ccd 2	ccd 3	ccd 5	ccd 6	ccd 7	ccd 8		ccd 2	ccd 3	ccd 5	ccd 6	ccd 7	ccd 8
level 1 events	33239	29770	49576	31467	43391	40718	grade 0 events	1425	1559	2984	1394	1517	2881
rejected events	29797	26194	26247	27828	25461	31949		4%	5%	6%	4%	3%	7%
rejected %	89%	87%	52%	88%	58%	78%	grade 1 events	20	20	197	18	41	35
								0%	0%	0%	0%	0%	0%
							grade 2 events	798	712	7189	837	3709	1884
								2%	2%	14%	2%	8%	4%
							grade 3 events	331	333	764	346	1482	942
								0%	1%	1%	1%	3%	2%
							grade 4 events	331	351	707	346	1403	945
								0%	1%	1%	1%	3%	2%
							grade 5 events	1199	1414	3151	1435	4056	2034
								3%	4%	6%	4%	9%	4%
							grade 6 events	574	631	11742	722	9850	2135
								1%	2%	23%	2%	22%	5%
							grade 7 events	28561	24750	22842	26369	21333	29862
								85%	83%	46%	83%	49%	73%

2.2 Compared Parameters

Parameter	Planned	Actual	Parameter	Planned	Actual
Instrument	ACIS	ACIS	Obspar format version number	7	7
Detector	ACIS-235678	ACIS-235678	Obspar file type	PREDICTED	ACTUAL
Grating	NONE	NONE	Obspar update status	NONE	UPDATED
Data mode	FAINT	FAINT	CCD I0 on	N	N
Observation mode	POINTING	POINTING	CCD I1 on	N	N
[deg] Pointing RA	286.969271	286.9543920744639	CCD I2 on	O2	Y
[deg] Pointing Dec	8.077985	8.05475793388036	CCD I3 on	O3	Y
[deg] Pointing Roll	206.816132	206.9749061386023	CCD S0 on	N	N
[mm] SIM focus pos	-0.684267	-0.6828225247311905	CCD S1 on	O1	Y
[mm] SIM defocus	0	0.001444936568705701	CCD S2 on	O5	Y
[mm] SIM translation stage pos	-190.132523	-190.1400660498719	CCD S3 on	Y	Y
[mm] SIM translation stage offset	0	0.00754346686406393	CCD S4 on	O4	Y
[s] Observation start time (MET)	301519492.184000	301518506.41502	CCD S5 on	N	N
Observation start date	2007-07-22T19:23:47	2007-07-22T19:08:26	Number of optional ACIS chips dropped	0	0
[s] Observation end time (MET)	301522792.184000	301523619.62777	On-chip summing requested	N	N
Observation end date	2007-07-22T20:18:47	2007-07-22T20:33:39	Subarray requested	NONE	NONE
Read mode	TIMED	TIMED	Alternating exposures requested	N	N
			[s] Primary exposure time	0.000000	3.2

2.3 Aspect



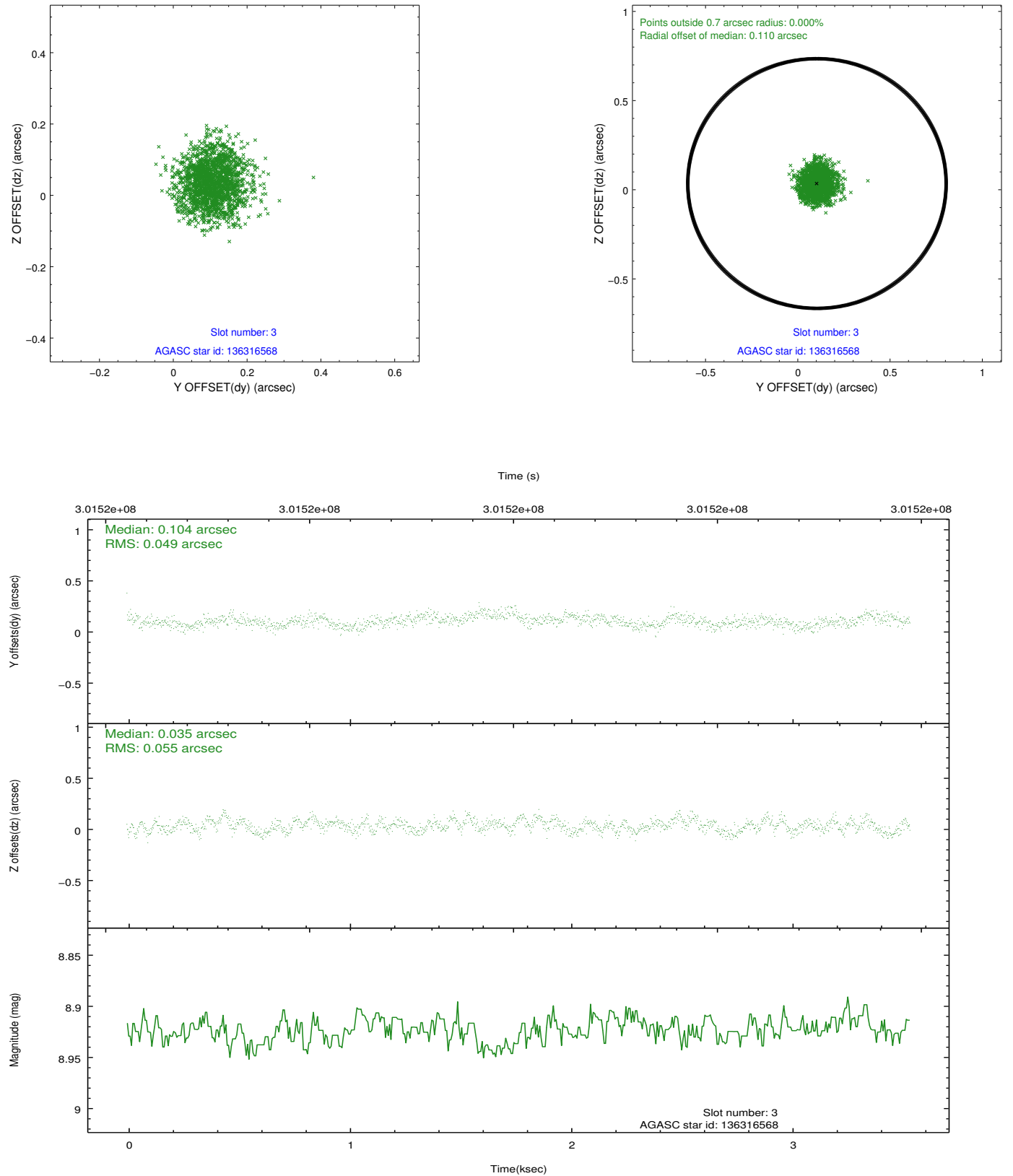


Slot Statistics

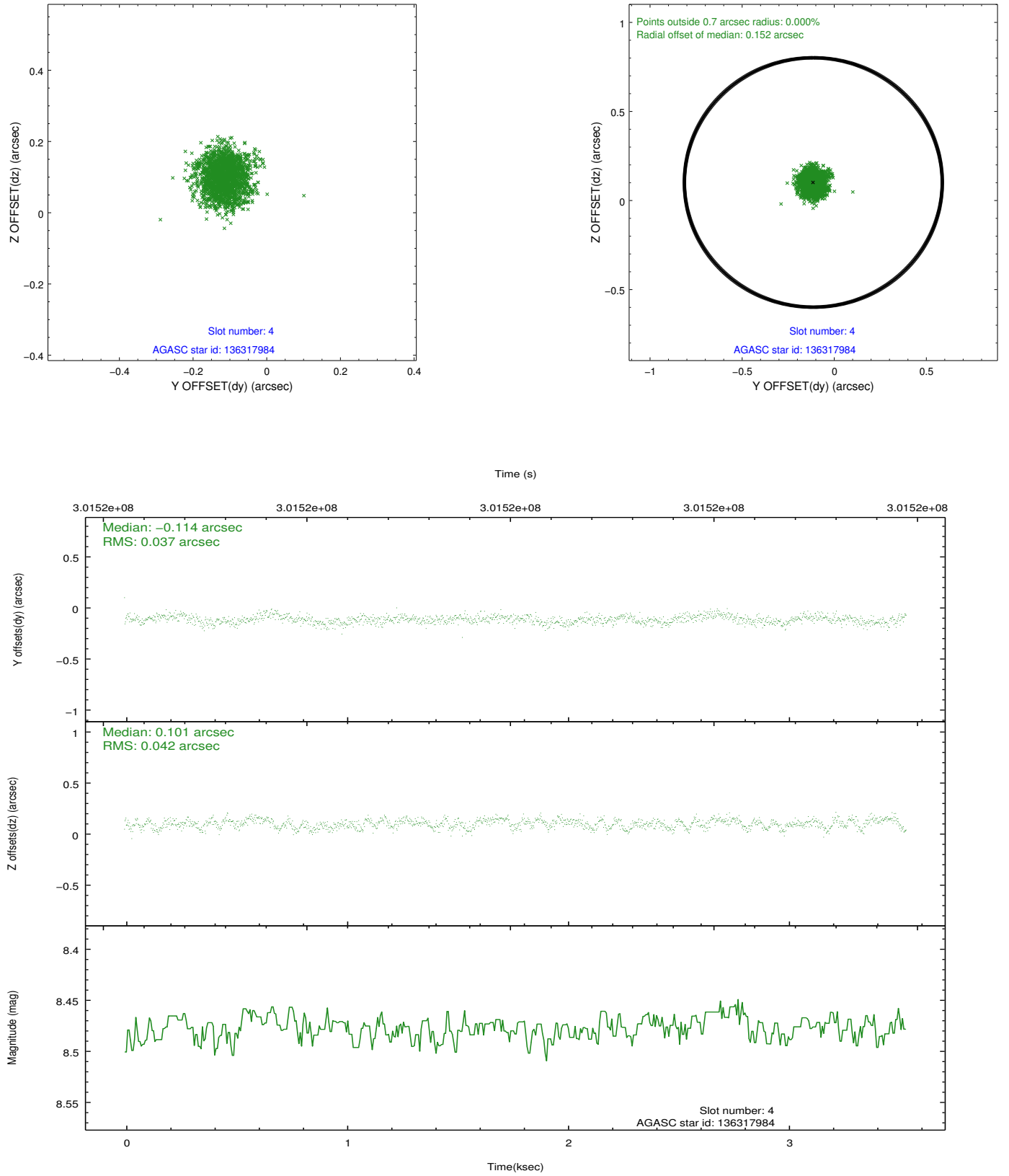
slot	status	id	mag	n_pts	med_dy	med_dz	dr1	dr2	ra	dec	mean_y	mean_z
0	FID	ACIS-S-2	7.10	864	-0.030	-0.070	0.007	0.012	0.000000	0.000000	-765.12	-1734.54
1	FID	ACIS-S-4	7.20	864	0.149	0.033	0.005	0.010	0.000000	0.000000	2147.53	172.19
2	FID	ACIS-S-5	7.23	863	-0.151	0.045	0.006	0.011	0.000000	0.000000	-1815.79	167.91
3	GUIDE	136316568	8.92	1723	0.104	0.035	0.080	0.125	286.954278	8.457736	-569.03	-1244.07
4	GUIDE	136317984	8.48	1726	-0.114	0.101	0.061	0.095	286.813953	8.124970	417.07	-401.22
5	GUIDE	136318600	9.17	1726	0.066	-0.107	0.073	0.121	287.193672	7.971966	-541.86	701.07
6	GUIDE	136323760	7.86	1727	-0.135	0.012	0.052	0.092	286.241143	8.217392	2087.48	-1619.65
7	GUIDE	136323816	8.12	1726	0.087	-0.041	0.079	0.131	286.124291	8.296375	2331.84	-2063.00

2.4 Star Slots

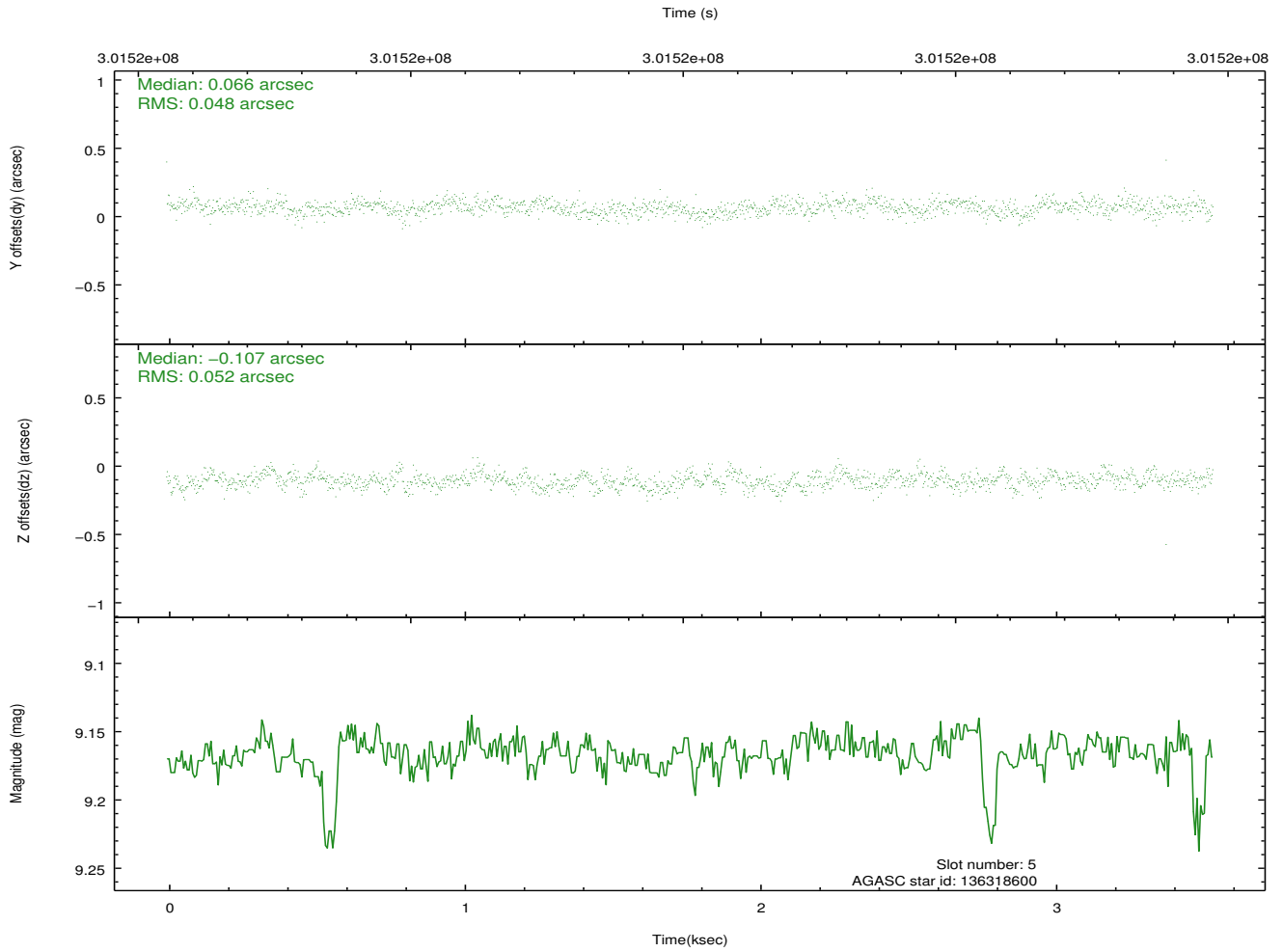
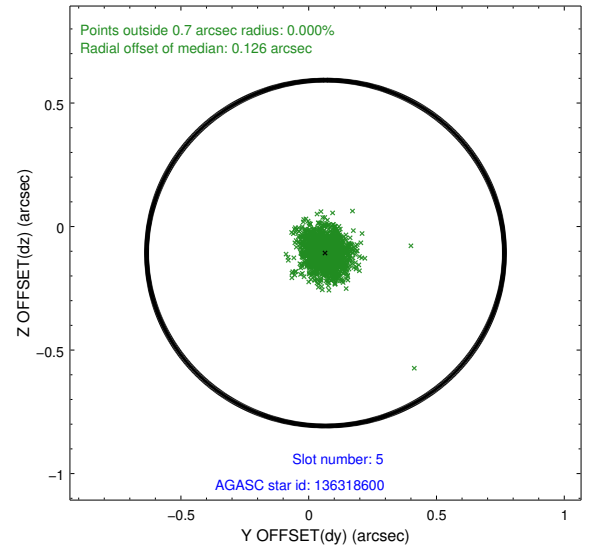
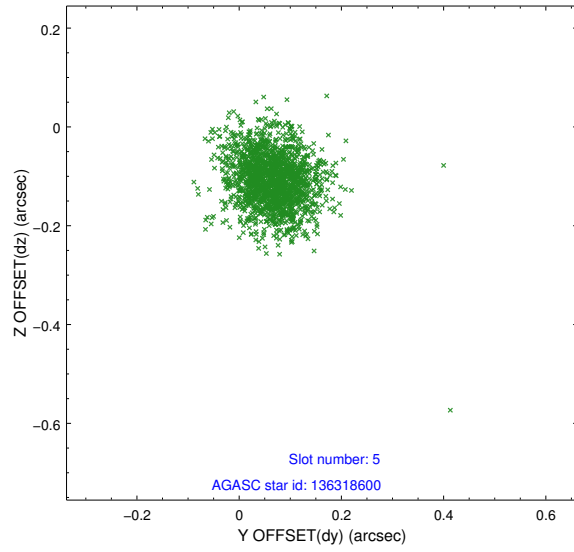
2.4.1 Slot 3



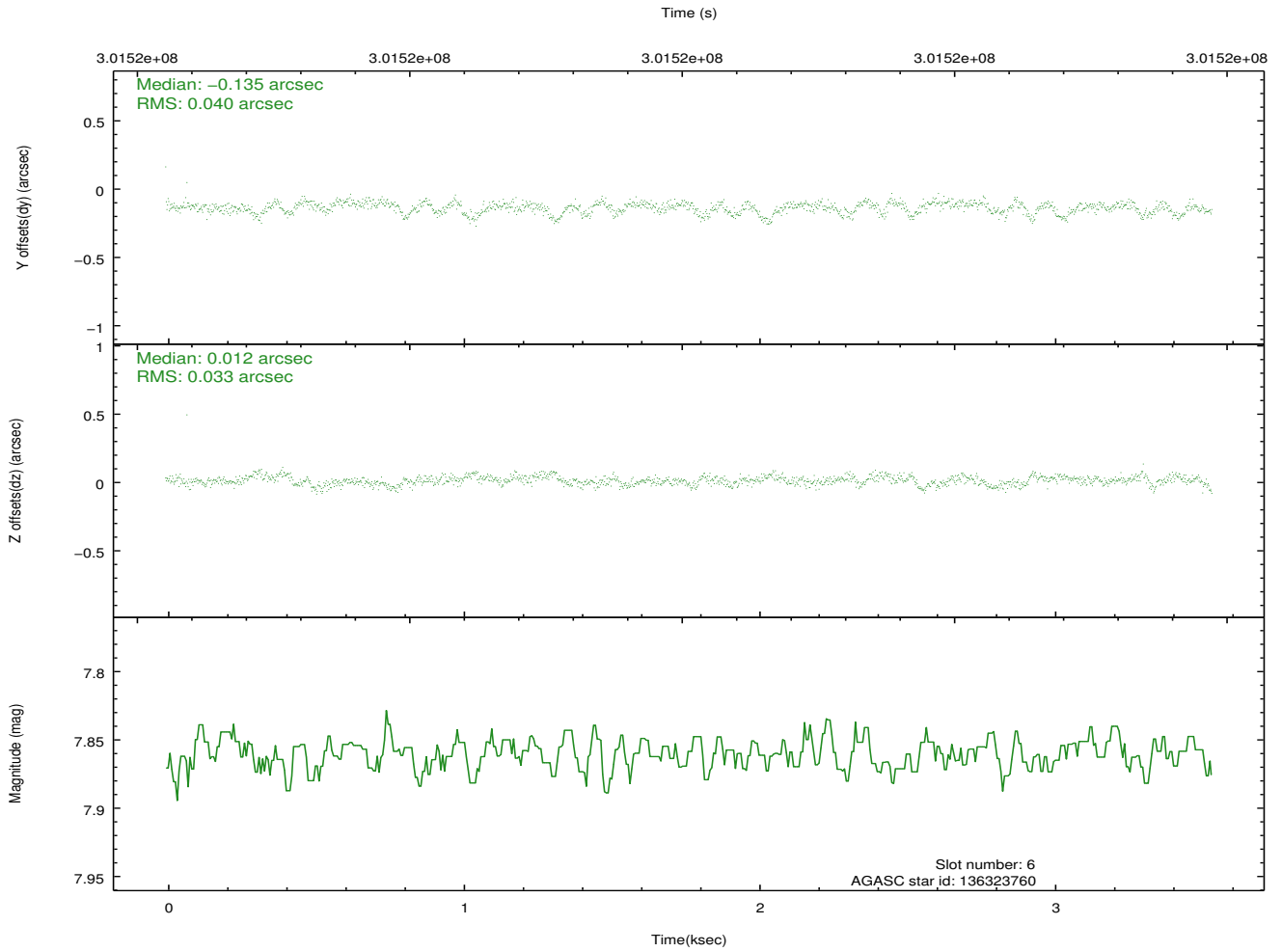
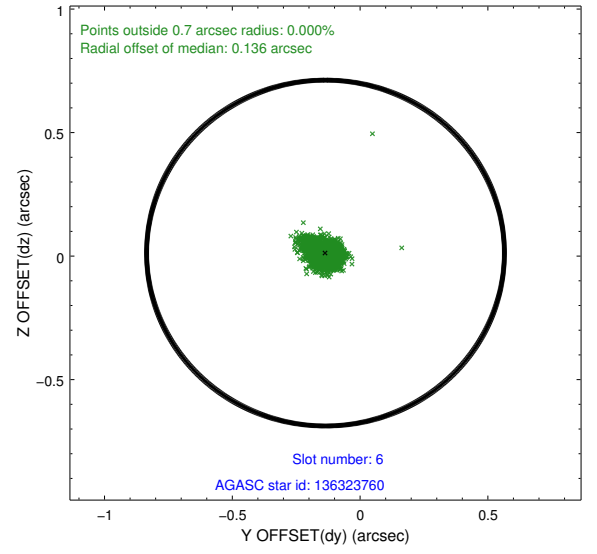
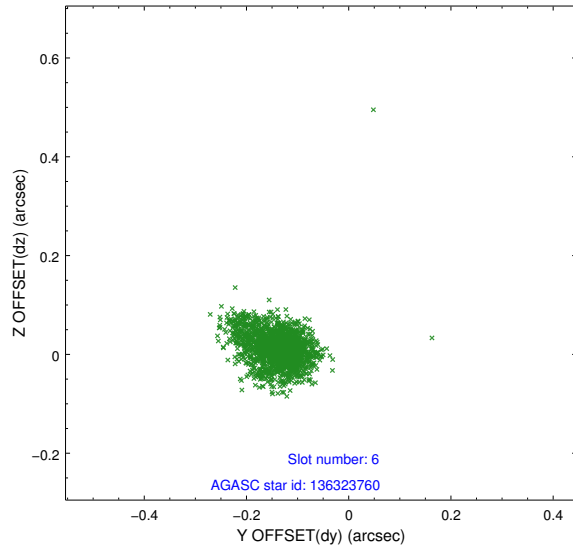
2.4.2 Slot 4



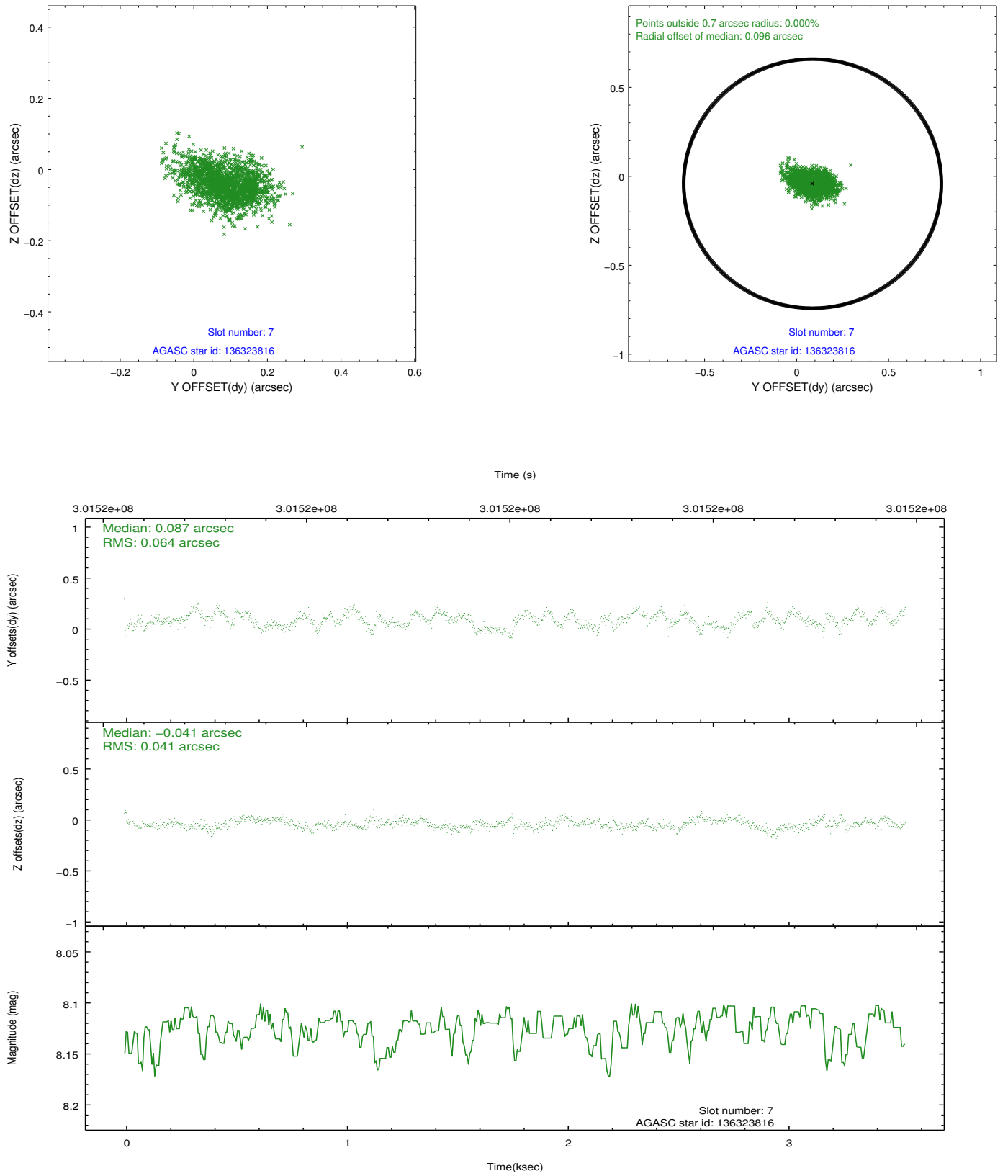
2.4.3 Slot 5



2.4.4 Slot 6

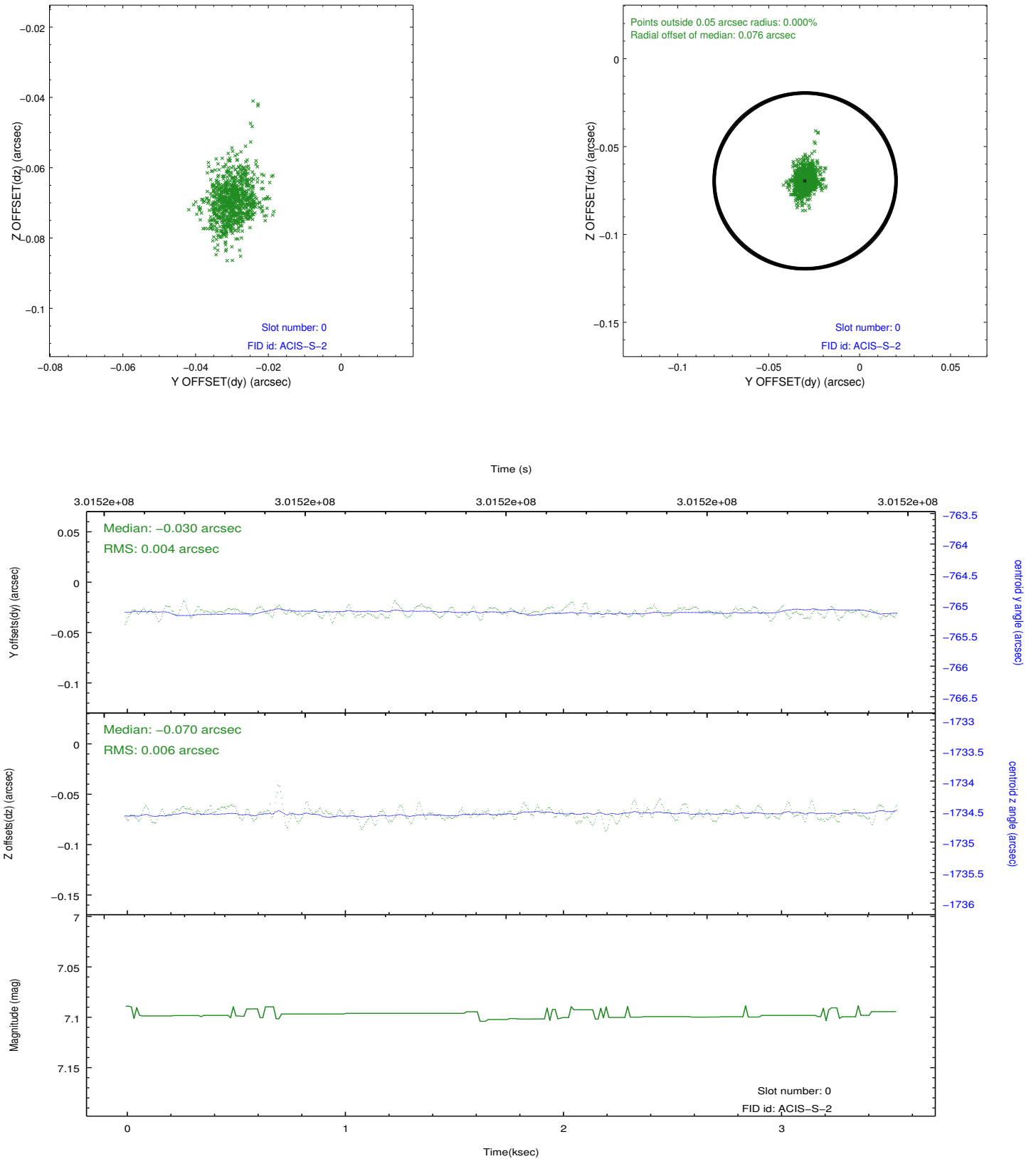


2.4.5 Slot 7

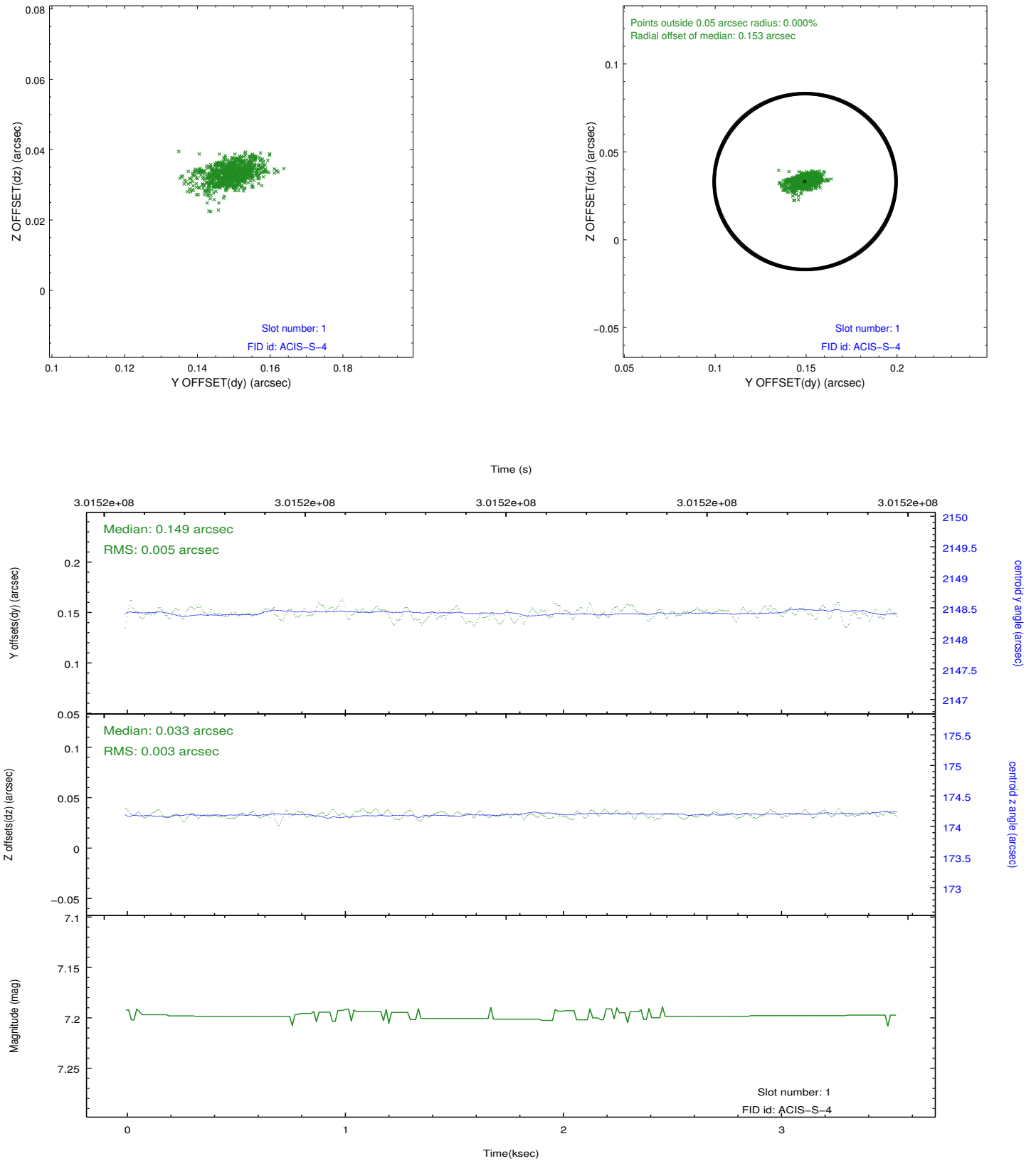


2.5 FID Slots

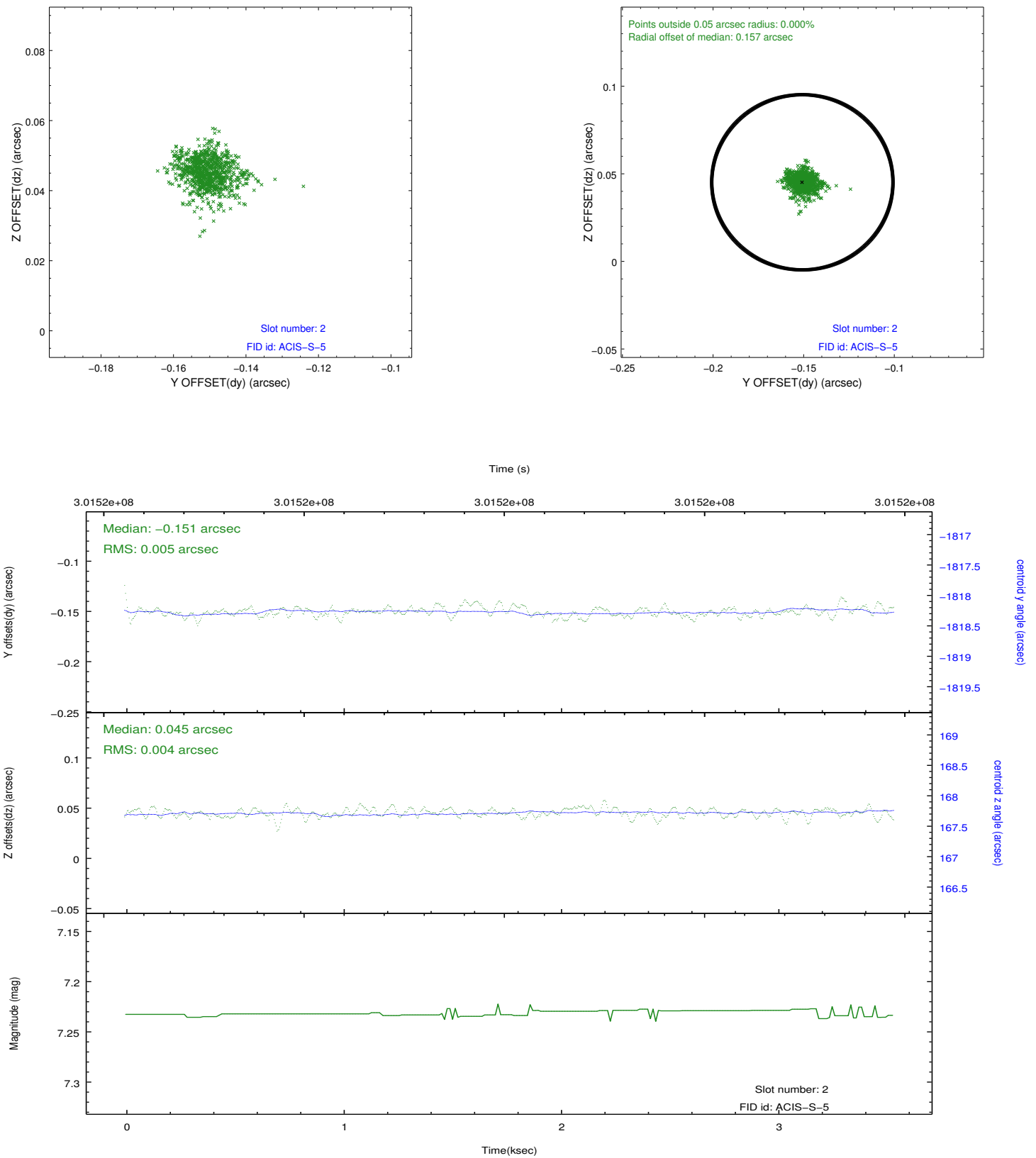
2.5.1 Slot 0



2.5.2 Slot 1



2.5.3 Slot 2



A Summary

A.1 Status

V&V Scientist	Jen Lauer
V&V Date (YYYY-MM-DD)	2012.05.01
V&V Edition	1
V&V Disposition and Status	OK
V&V Charge Time	3.25119998

A.2 Comments