

V&V Reference Report

L2 ASCDS Version : 8.4.4

Observation 7758 - L2 Version 2
Chandra X-Ray Center

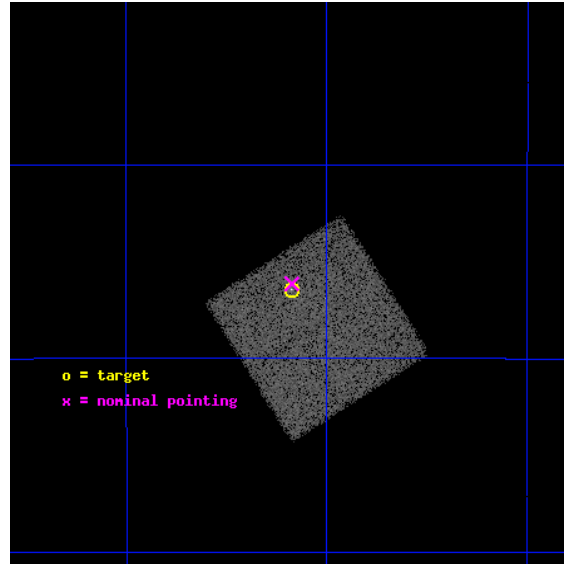
L2 Processing Date : Apr 26 2012

Contents

1	Front	2
2	OBI	3
2.1	OBI	3
2.1.1	Images	3
2.1.2	Bias	3
2.1.3	Parameters	4
2.1.4	Events	4
2.2	Compared Parameters	5
2.3	Aspect	6
2.4	Star Slots	9
2.4.1	Slot 3	9
2.4.2	Slot 4	10
2.4.3	Slot 5	11
2.4.4	Slot 6	12
2.4.5	Slot 7	13
2.5	FID Slots	14
2.5.1	Slot 0	14
2.5.2	Slot 1	15
2.5.3	Slot 2	16
A	Summary	17
A.1	Status	17
A.2	Comments	17

1 Front

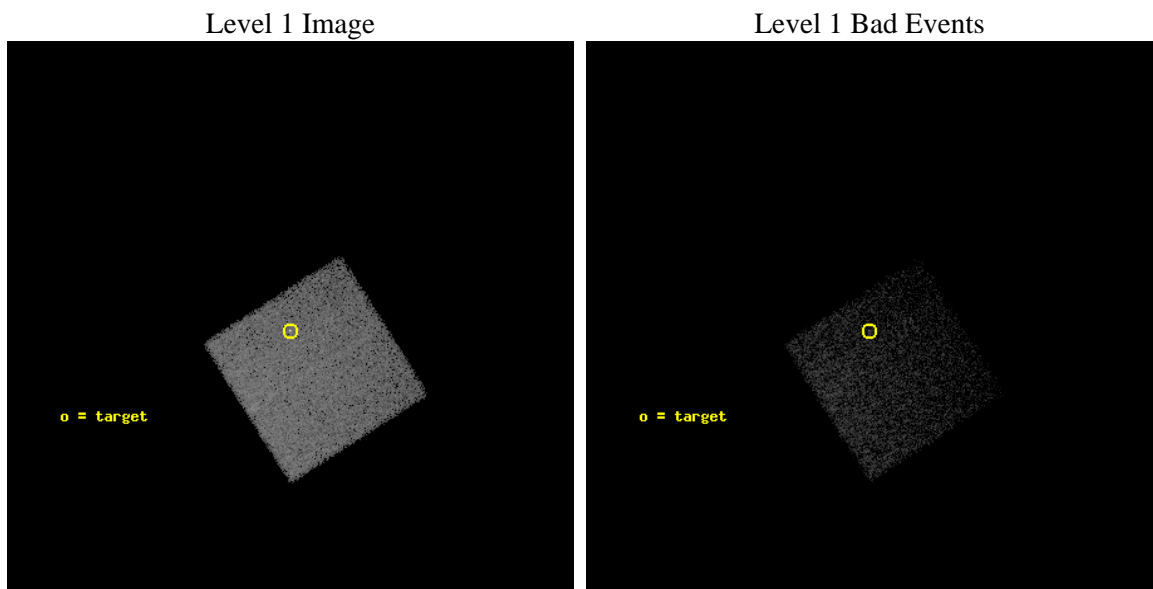
seq_num	701426	Sequence number
obs_id	7758	Observation id
title	Flux ratio anomalies in gravitationally lensed quasars with four images: Chandra observations of 4 new systems.	Proposal title
observer	Dr. Paul Schechter	Principal investigator
object	WFI2026-4536	Source name
dtcycle	0	
cycle	P	events from which exps? Prim/Second/Both
ra_targ	306.543333	Observer's specified target RA [deg]
dec_targ	-45.607528	Observer's specified target Dec [deg]
ra_nom	306.54340342972	Nominal RA [deg]
dec_nom	-45.602650961879	Nominal Dec [deg]
roll_nom	57.663493984753	Nominal Roll [deg]
revision	2	Processing version of data
ontime	10167.0	Sum of GTIs [s]
livetime	10029.792439429	Livetime [s]
ontime7	10167.0	Sum of GTIs [s]
l2events	35269	Number of level 2 events



2 OBI

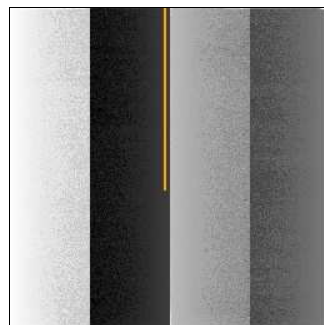
2.1 OBI

2.1.1 Images



2.1.2 Bias

Chip 7



2.1.3 Parameters

obi_num	0	Obi number	sched_exp_time	10000.000000	[s] Scheduled observation exposure time
ascdsver	8.4.4	Processing system revision	ontime	10167.0	Sum of GTIs [s]
caldsver	4.4.9	 	ontime7	10167.0	Sum of GTIs [s]
date	2012-04-27T02:10:20	Date and time of file creation	l1events	74654	Number of level 1 events
revision	2	Processing version of data			

2.1.4 Events

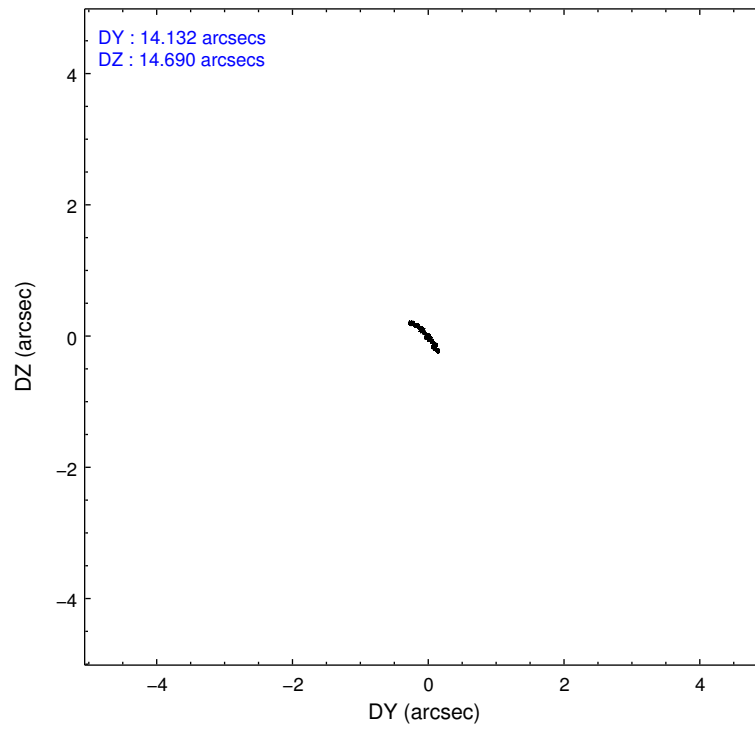
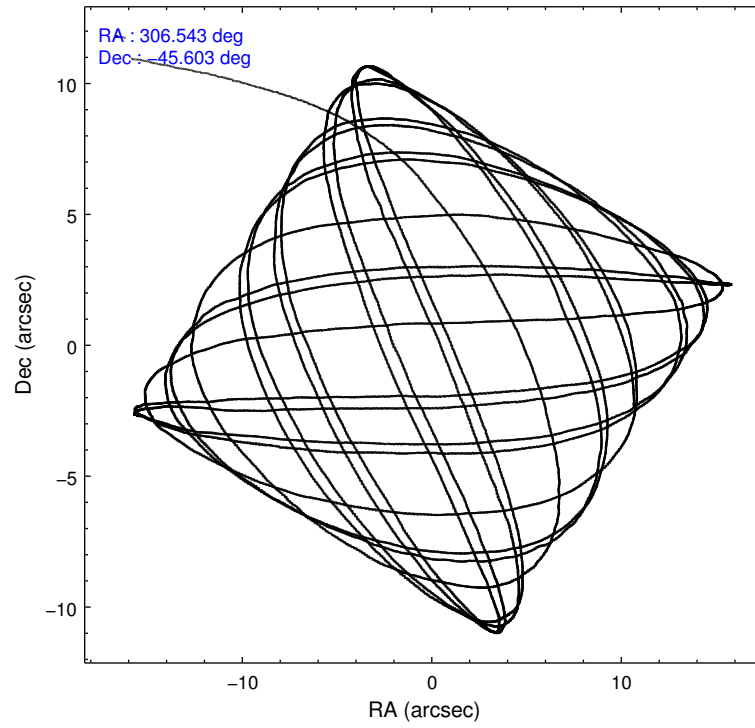
	ccd 7
level 1 events	74654
rejected events	38238
rejected %	51%

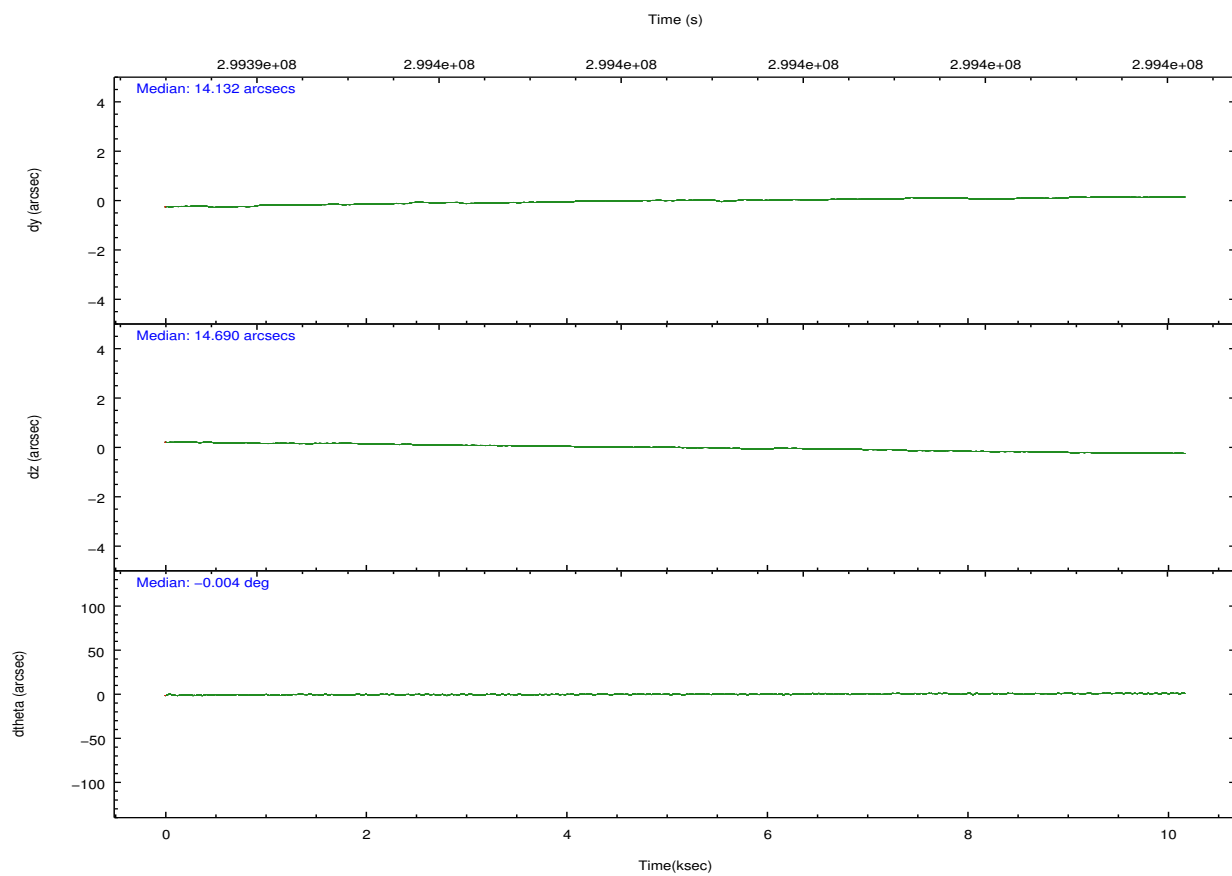
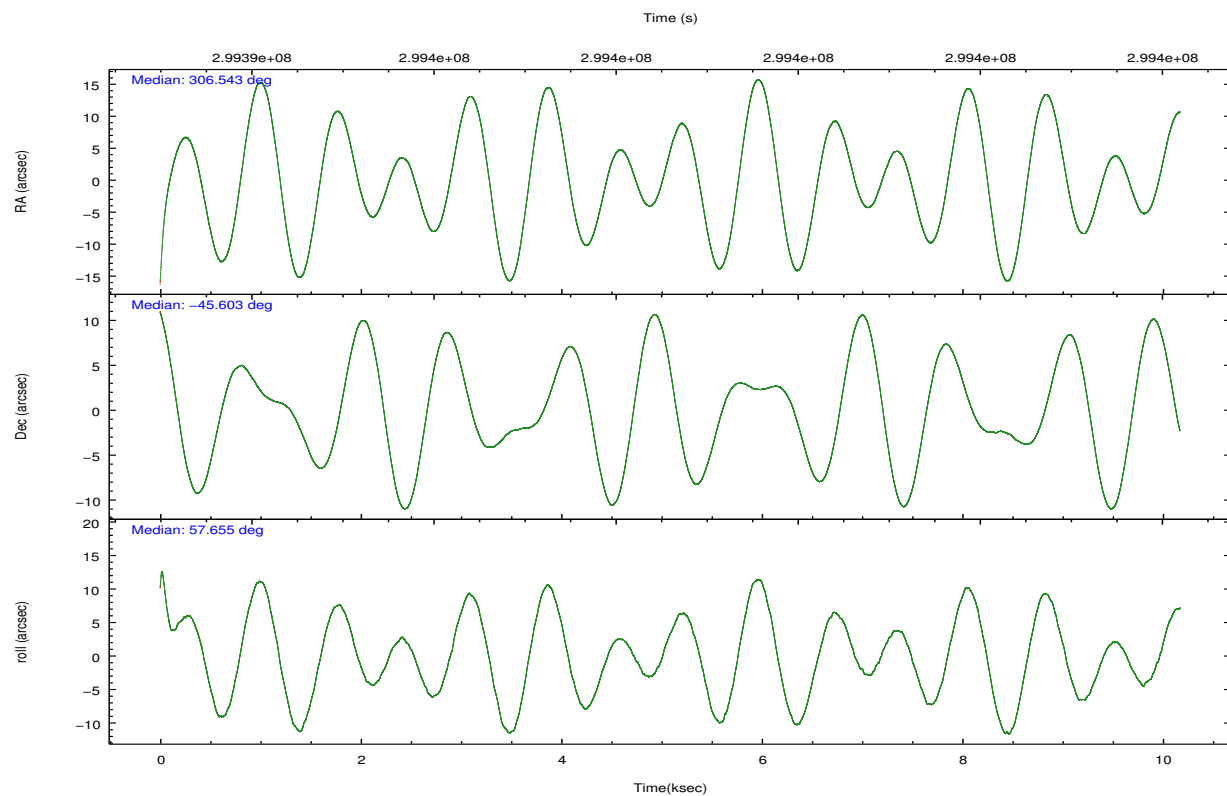
	ccd 7
grade 0 events	4294
	5%
grade 1 events	102
	0%
grade 2 events	8118
	10%
grade 3 events	3812
	5%
grade 4 events	3732
	4%
grade 5 events	7937
	10%
grade 6 events	18417
	24%
grade 7 events	28242
	37%

2.2 Compared Parameters

Parameter	Planned	Actual	Parameter	Planned	Actual
Instrument	ACIS	ACIS	Obspar format version number	7	7
Detector	ACIS-7	ACIS-7	Obspar file type	PREDICTED	ACTUAL
Grating	NONE	NONE	Obspar update status	NONE	UPDATED
Data mode	VFAINT	VFAINT	Number of optional ACIS chips dropped	0	0
Observation mode	POINTING	POINTING	On-chip summing requested	N	N
[deg] Pointing RA	306.542351	306.5434034297219	Subarray requested	NONE	NONE
[deg] Pointing Dec	-45.630017	-45.60265096187909	Alternating exposures requested	N	N
[deg] Pointing Roll	57.506092	57.66349398475341	[s] Primary exposure time	0.000000	3
[mm] SIM focus pos	-0.684267	-0.6828225247311905			
[mm] SIM defocus	0	0.001444936568705701			
[mm] SIM translation stage pos	-190.132523	-190.1425803651734			
[mm] SIM translation stage offset	0	0.01005778216563158			
[s] Observation start time (MET)	299393668.184000	299392661.95072			
Observation start date	2007-06-28T04:53:23	2007-06-28T04:37:41			
[s] Observation end time (MET)	299403668.184000	299404365.91378			
Observation end date	2007-06-28T07:40:03	2007-06-28T07:52:45			
Read mode	TIMED	TIMED			

2.3 Aspect



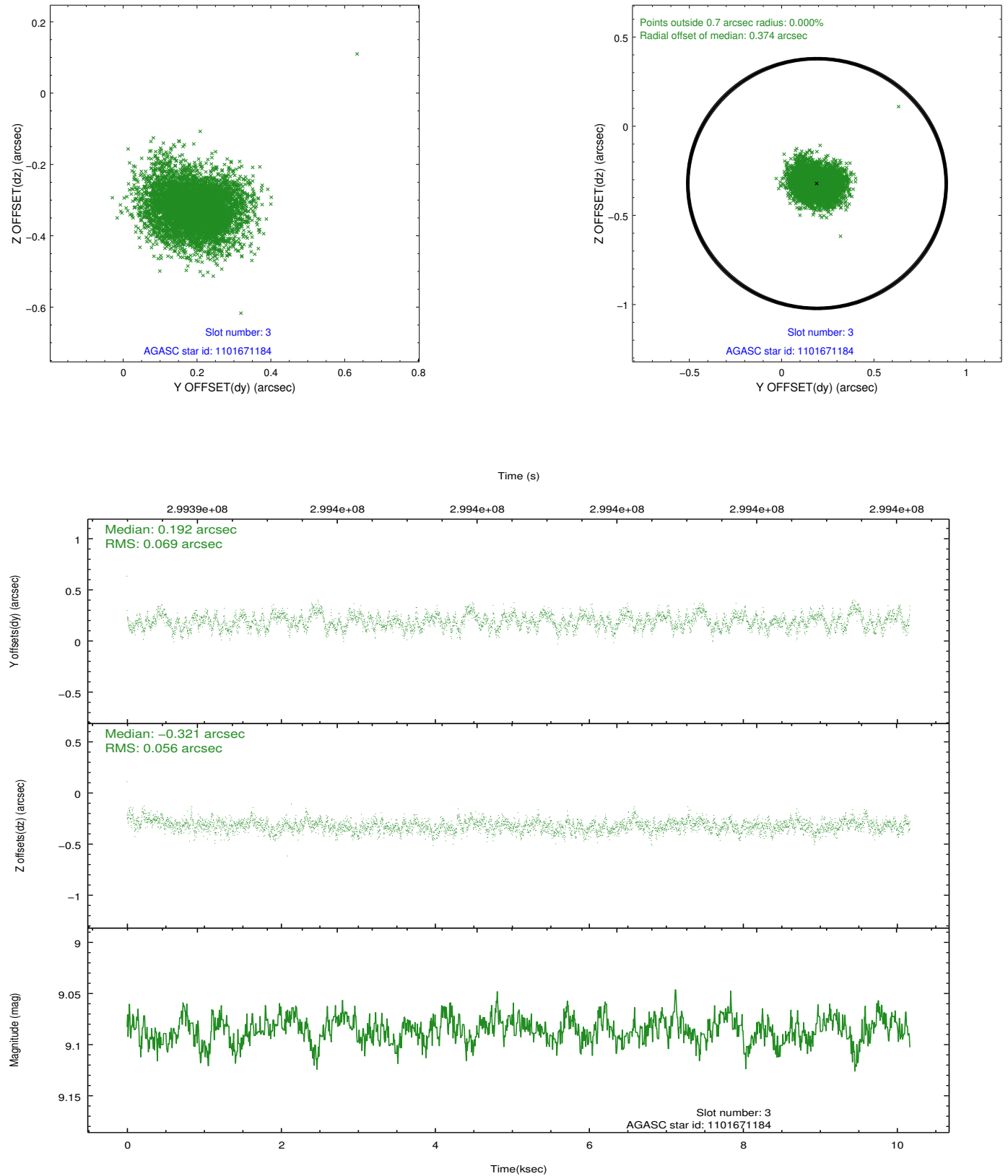


Slot Statistics

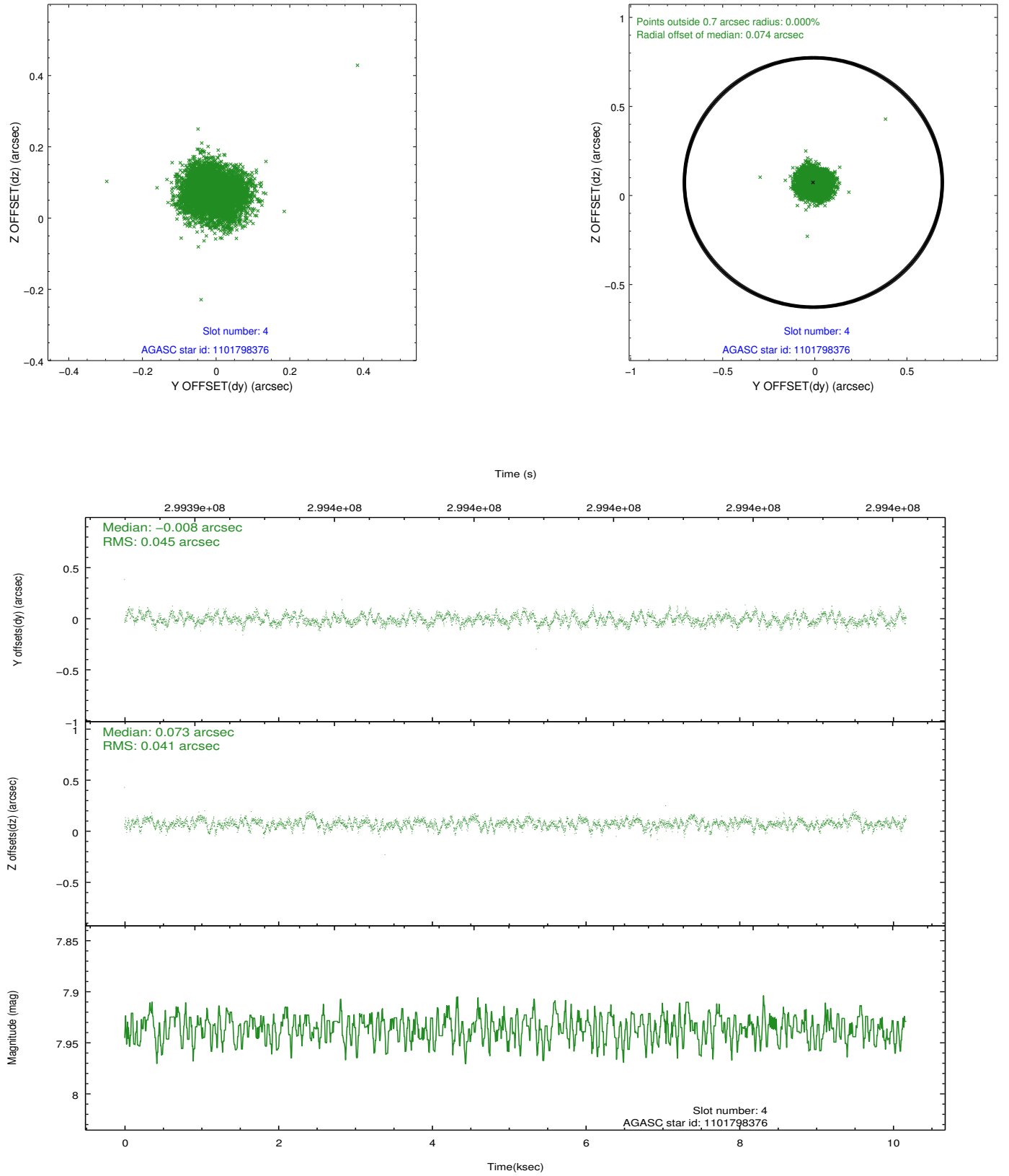
slot	status	id	mag	n_pts	med_dy	med_dz	dr1	dr2	ra	dec	mean_y	mean_z
0	FID	ACIS-S-2	7.09	2481	-0.074	-0.041	0.009	0.015	0.000000	0.000000	-767.12	-1736.05
1	FID	ACIS-S-4	7.19	2481	0.209	0.047	0.008	0.015	0.000000	0.000000	2146.19	172.01
2	FID	ACIS-S-5	7.22	2481	-0.166	0.003	0.008	0.016	0.000000	0.000000	-1819.40	166.20
3	GUIDE	1101671184	9.09	4956	0.192	-0.321	0.095	0.152	305.488411	-45.638944	-1466.89	2210.47
4	GUIDE	1101798376	7.94	4960	-0.008	0.073	0.065	0.101	306.726374	-45.593530	359.32	-320.10
5	GUIDE	1101798712	8.65	4958	0.019	0.093	0.073	0.121	307.377198	-45.382879	1875.65	-1307.93
6	GUIDE	1101800328	9.39	4950	-0.035	-0.029	0.089	0.145	306.702346	-46.442941	-2254.73	-1907.68
7	GUIDE	1101792784	8.87	4954	-0.167	0.184	0.069	0.112	307.505213	-45.821681	703.41	-2415.84

2.4 Star Slots

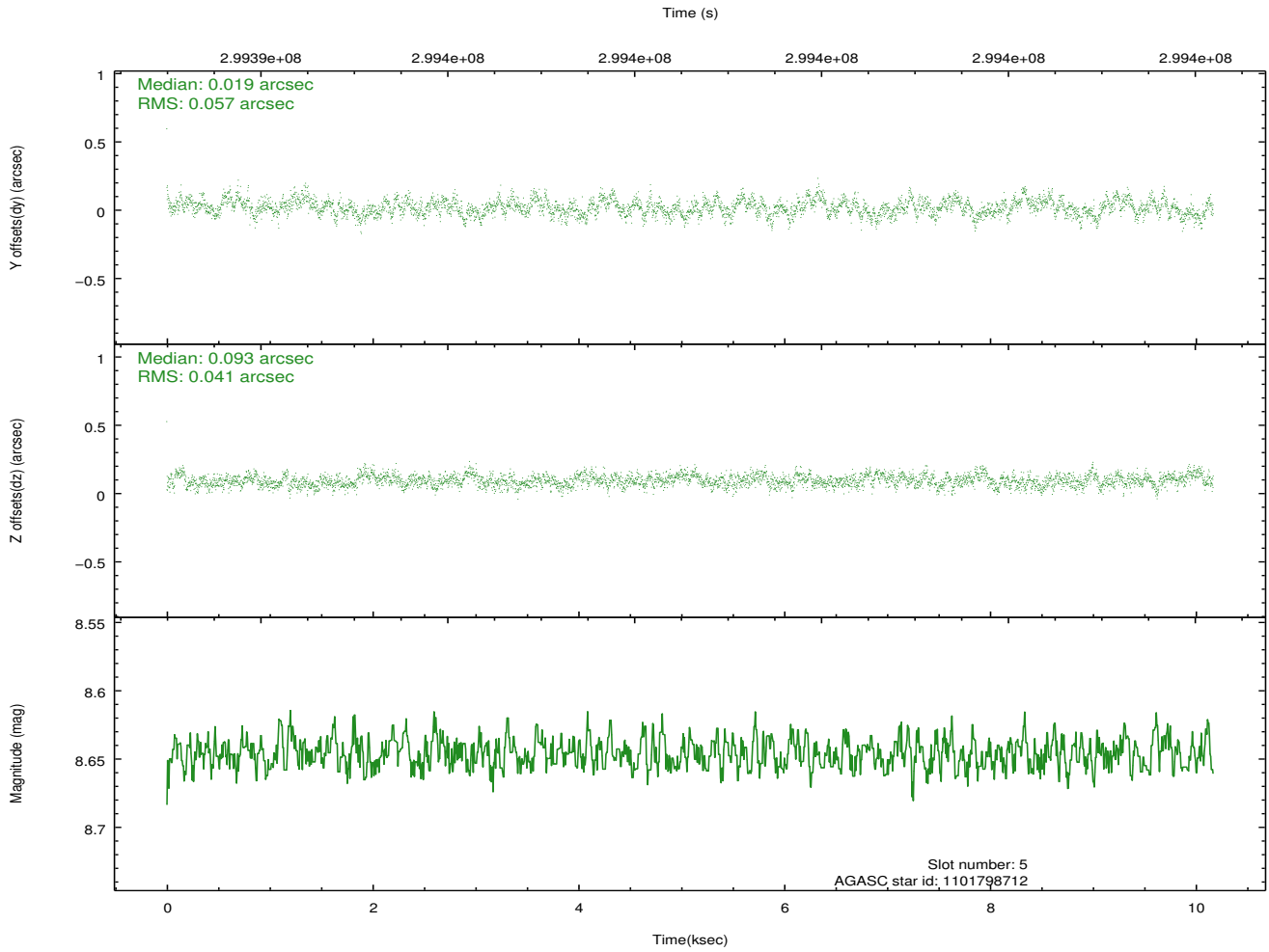
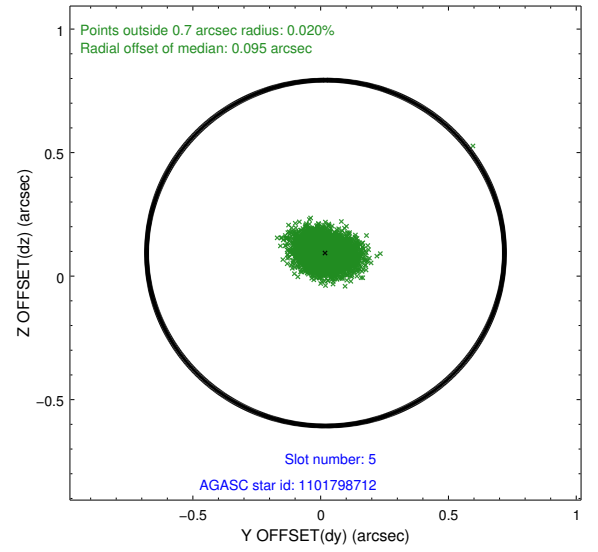
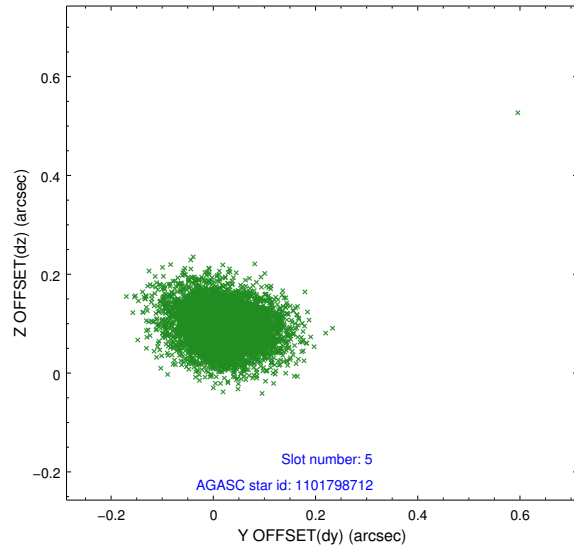
2.4.1 Slot 3



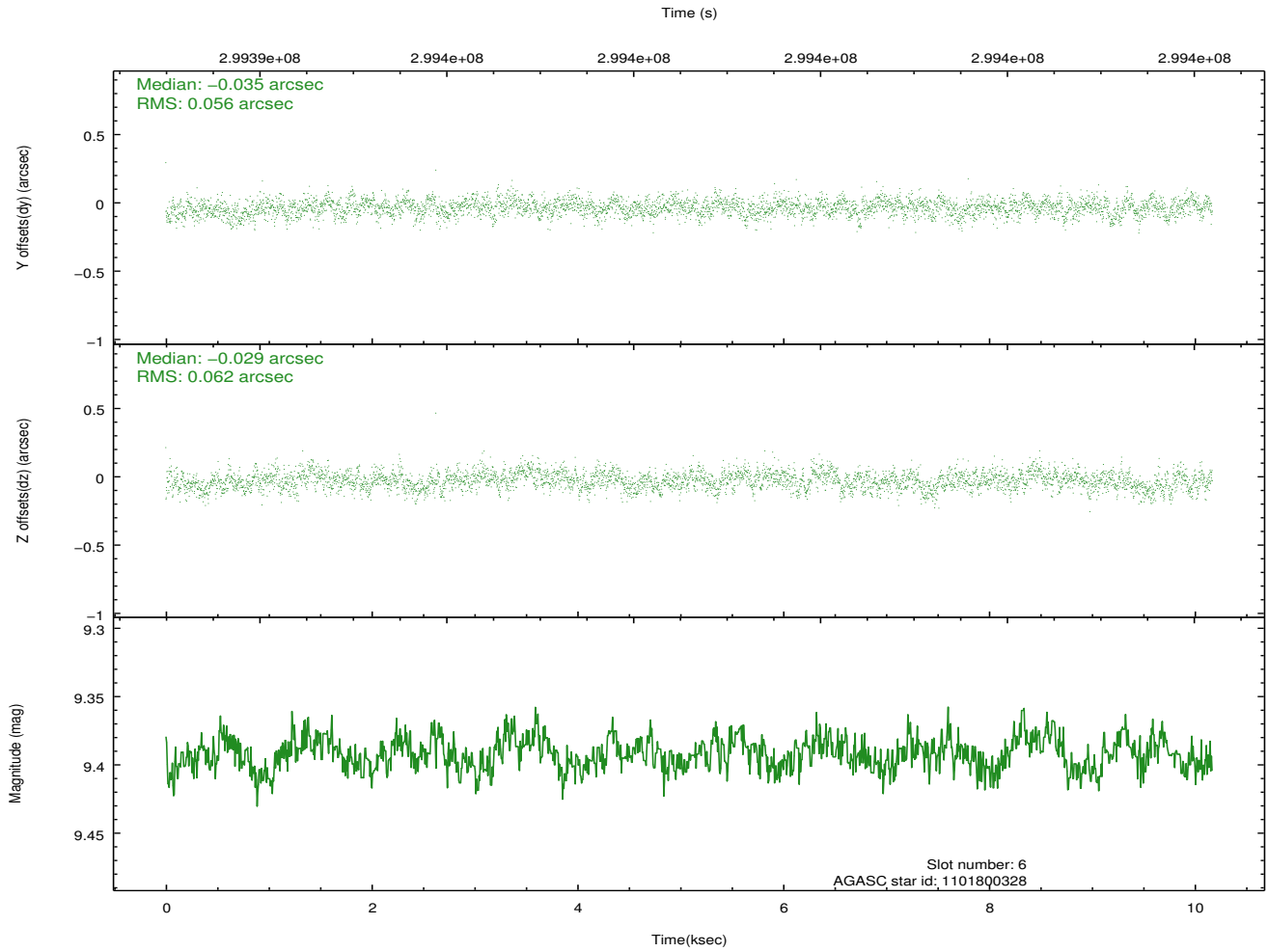
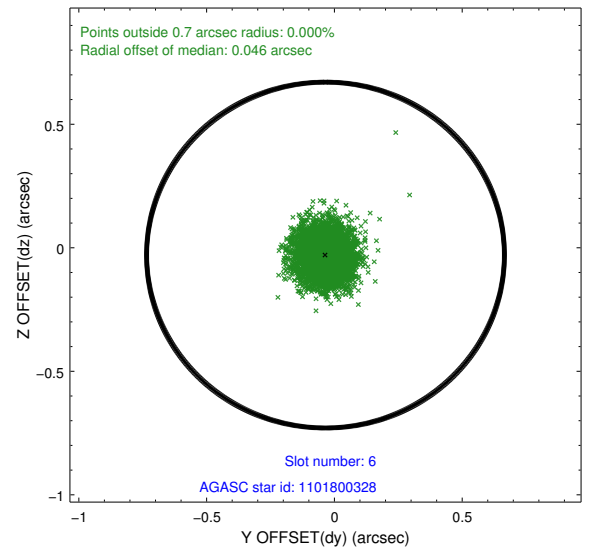
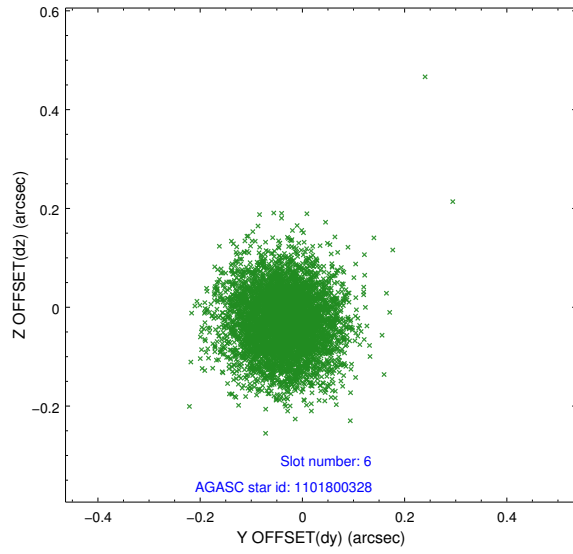
2.4.2 Slot 4



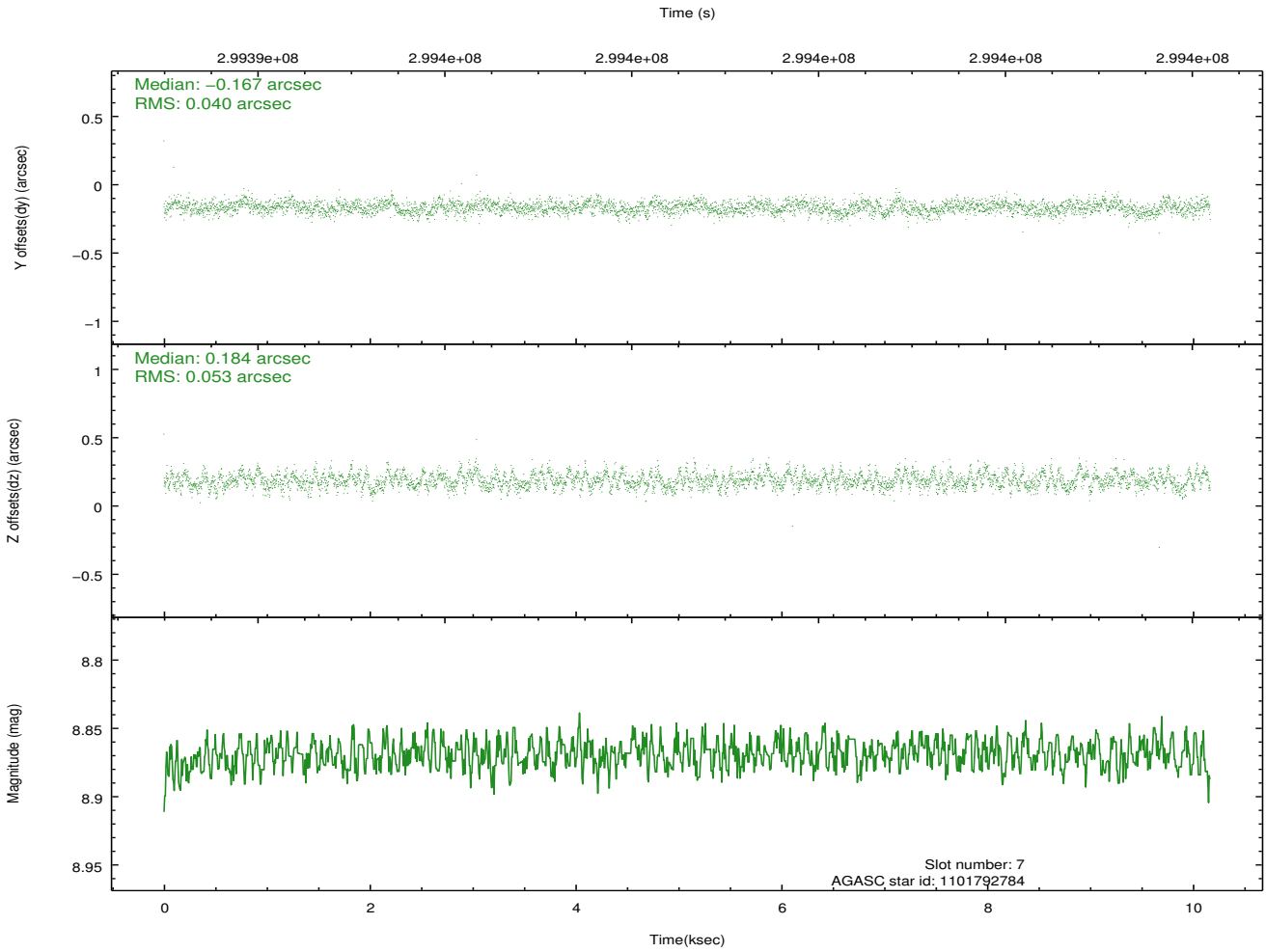
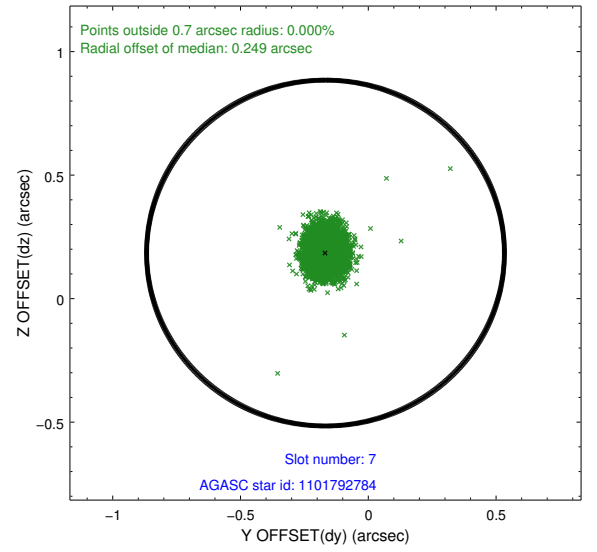
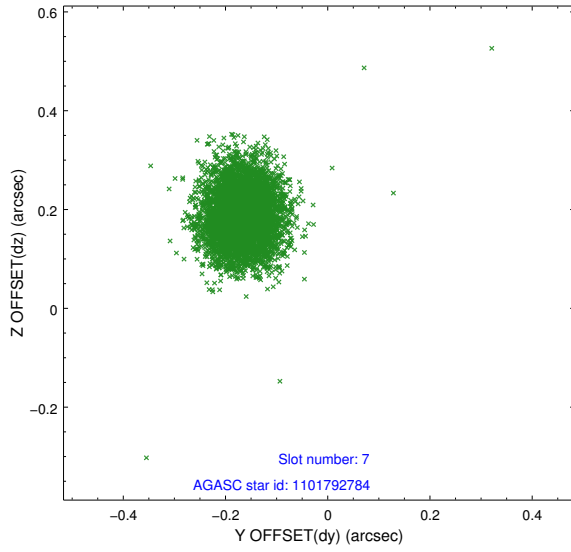
2.4.3 Slot 5



2.4.4 Slot 6

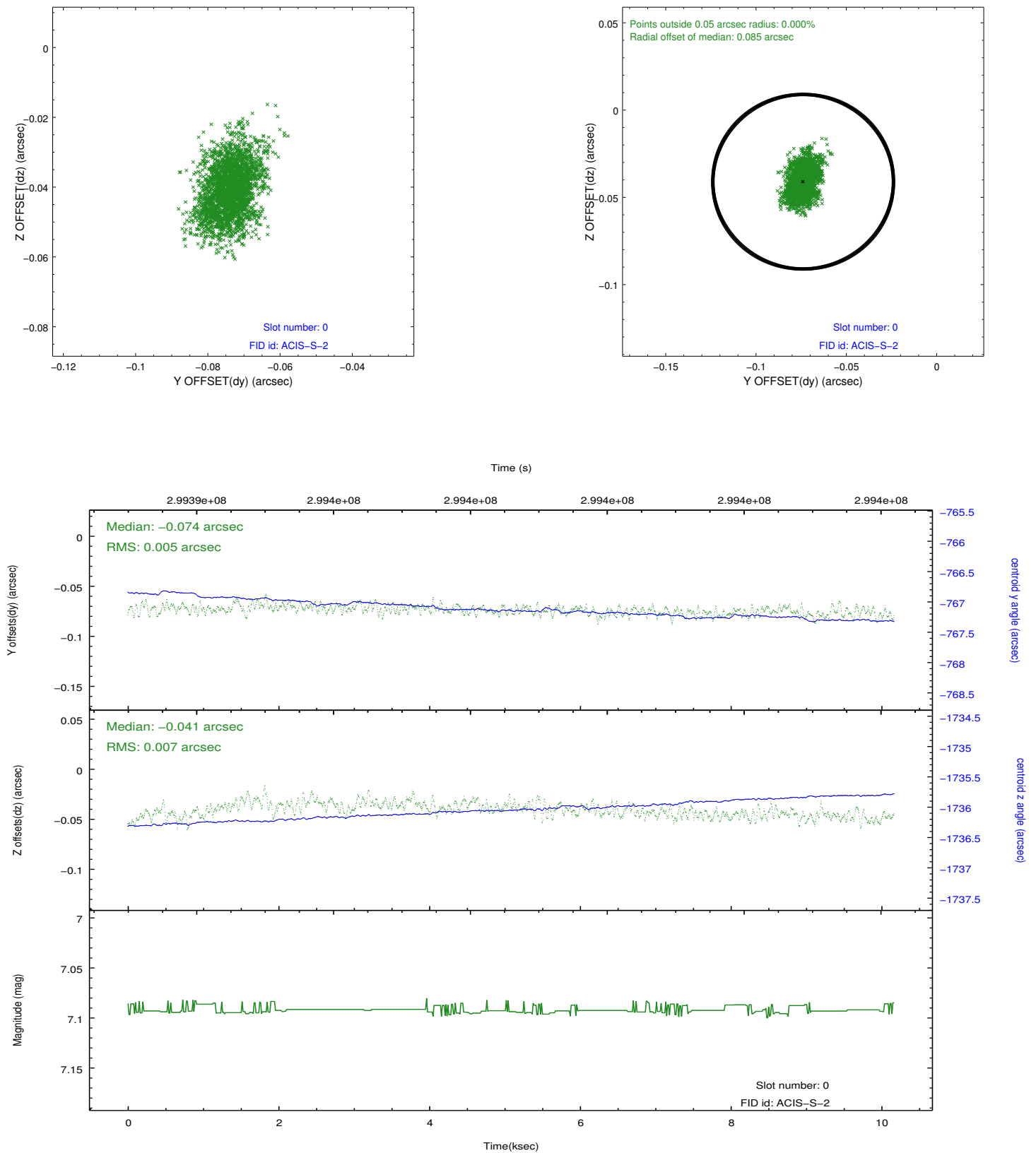


2.4.5 Slot 7

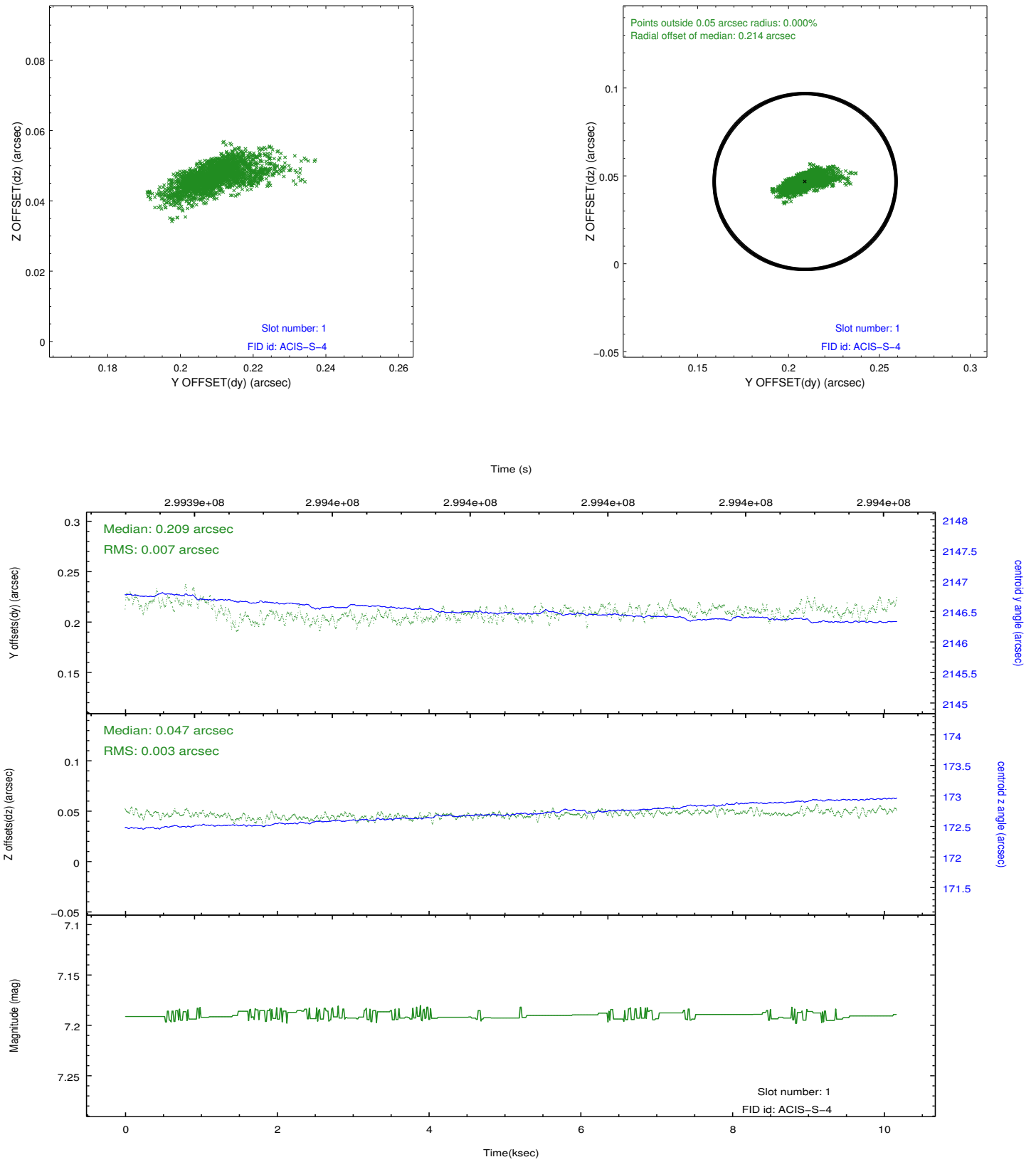


2.5 FID Slots

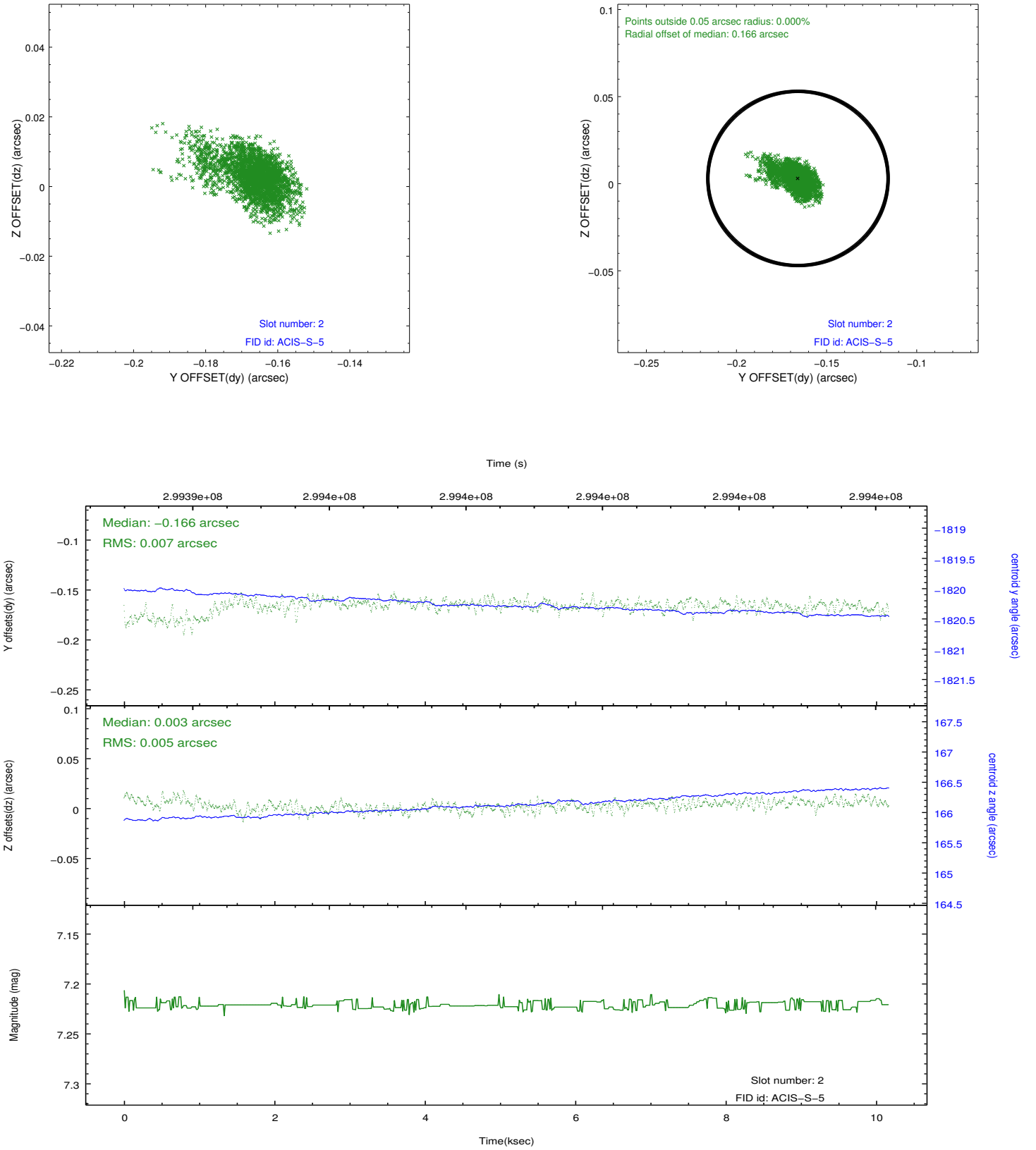
2.5.1 Slot 0



2.5.2 Slot 1



2.5.3 Slot 2



A Summary

A.1 Status

V&V Scientist	Jen Lauer
V&V Date (YYYY-MM-DD)	2012.04.27
V&V Edition	1
V&V Disposition and Status	OK
V&V Charge Time	10.167

A.2 Comments