

# V&V Reference Report

## L2 ASCDS Version : 8.4.3.1

Observation 7298 - L2 Version 3  
Chandra X-Ray Center

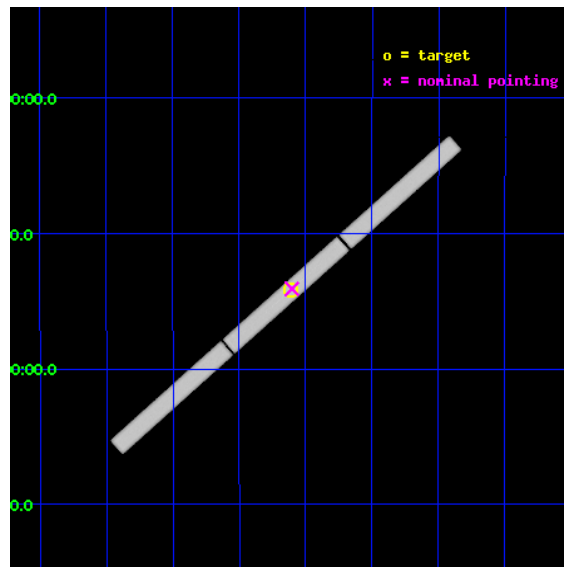
L2 Processing Date : Aug 11 2012

## Contents

<b>1</b>	<b>Front</b>	<b>2</b>
<b>2</b>	<b>OBI</b>	<b>3</b>
2.1	OBI . . . . .	3
2.1.1	Images . . . . .	3
2.1.2	Parameters . . . . .	4
2.1.3	Events . . . . .	4
2.2	Compared Parameters . . . . .	5
2.3	Aspect . . . . .	6
2.4	Star Slots . . . . .	9
2.4.1	Slot 3 . . . . .	9
2.4.2	Slot 4 . . . . .	10
2.4.3	Slot 5 . . . . .	11
2.4.4	Slot 6 . . . . .	12
2.4.5	Slot 7 . . . . .	13
2.5	FID Slots . . . . .	14
2.5.1	Slot 0 . . . . .	14
2.5.2	Slot 1 . . . . .	15
2.5.3	Slot 2 . . . . .	16
<b>3</b>	<b>Gratings</b>	<b>17</b>
3.1	LETG Arm . . . . .	17
<b>A</b>	<b>Summary</b>	<b>19</b>
A.1	Status . . . . .	19
A.2	Comments . . . . .	19

# 1 Front

seq_num	300179	Sequence number
obs_id	7298	Observation id
title	CHANDRA Observations of RS Oph a Recurrent Symbiotic Nova in Outburst	Proposal title
observer	Regents' Professor Sumner Starrfield	Principal investigator
object	RS Oph	Source name
ra_targ	267.555	Observer's specified target RA [deg]
dec_targ	-6.707917	Observer's specified target Dec [deg]
ra_nom	267.55153940535	Nominal RA [deg]
dec_nom	-6.7047615922946	Nominal Dec [deg]
roll_nom	138.34174895756	Nominal Roll [deg]
revision	3	Processing version of data
ontime	20126.132190317	[s]
livetime	19952.573262887	Ontime multiplied by DTCOR
l2events	1427163	Number of level 2 events

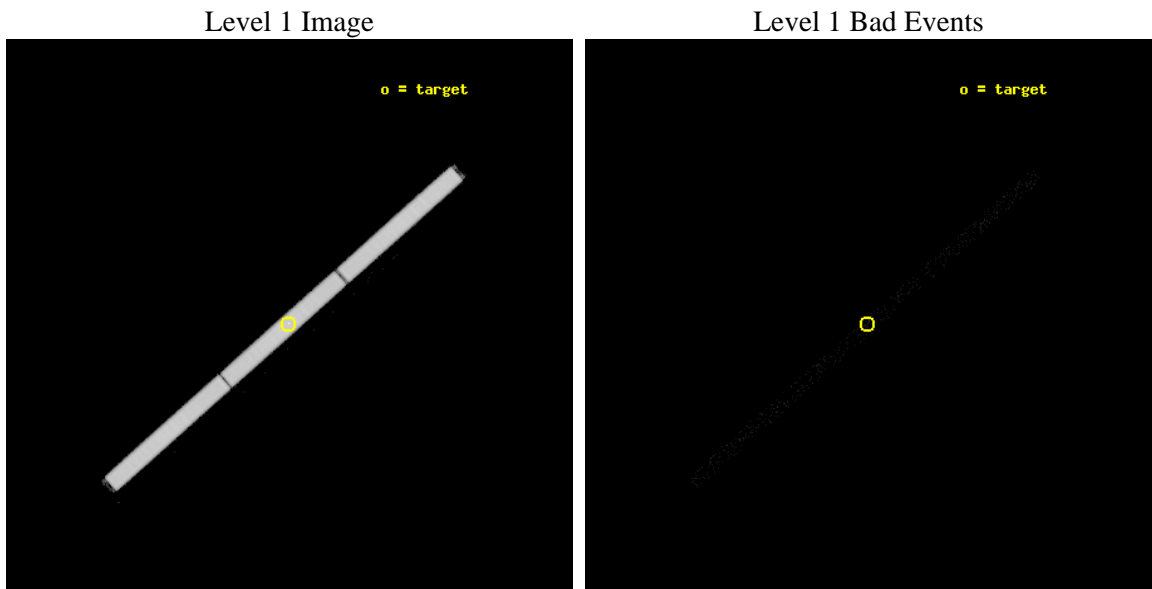




## 2 OBI

### 2.1 OBI

#### 2.1.1 Images



### 2.1.2 Parameters

obi_num	0	Obi number	sched_exp_time	20000.000000	[s] Scheduled observation exposure time
ascdsver	8.4.5	Processing system revision	ontime	20126.132190317	[s]
caldsver	4.5.1.1	&#160	l1events	2014421	Number of level 1 events
date	2012-08-11T08:34:08	Date and time of file creation			
revision	3	Processing version of data			

### 2.1.3 Events

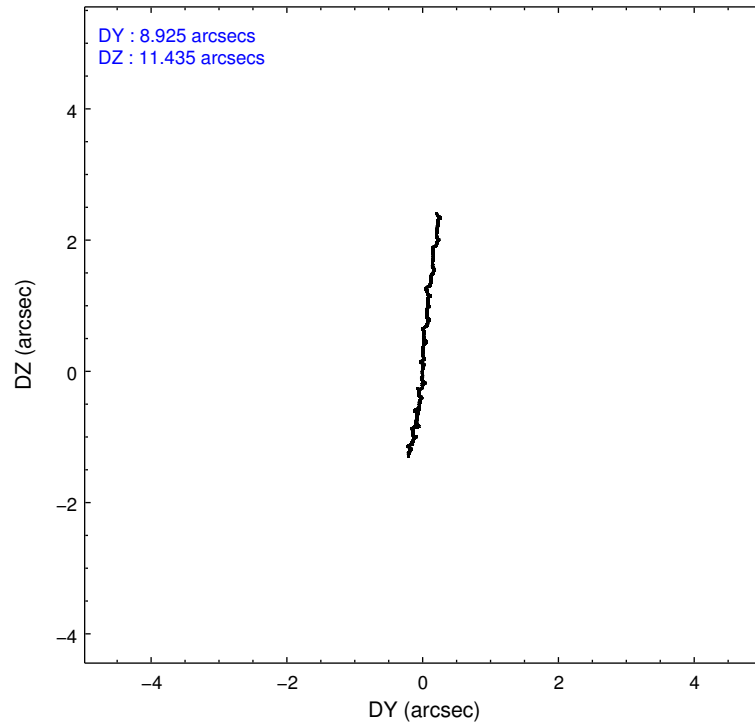
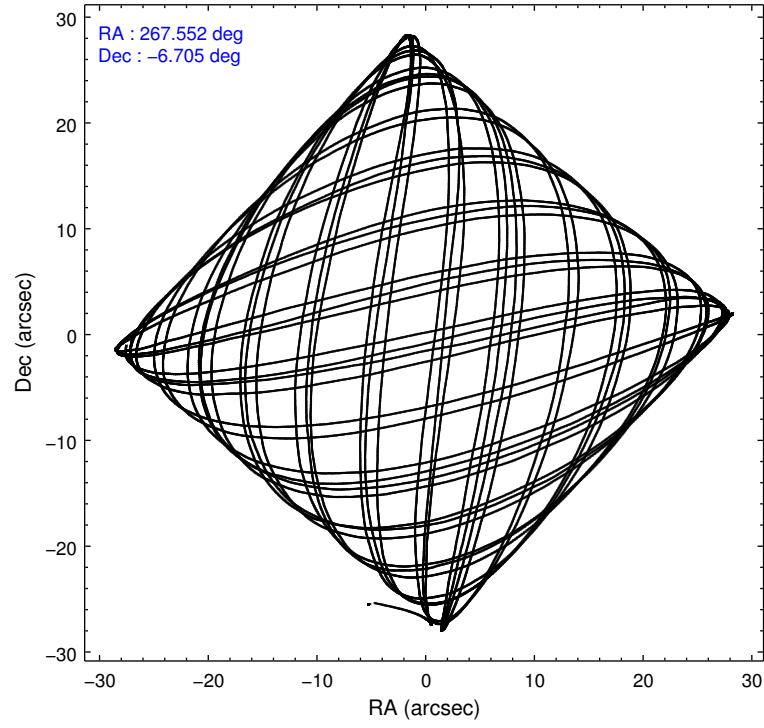
Level 1 Events

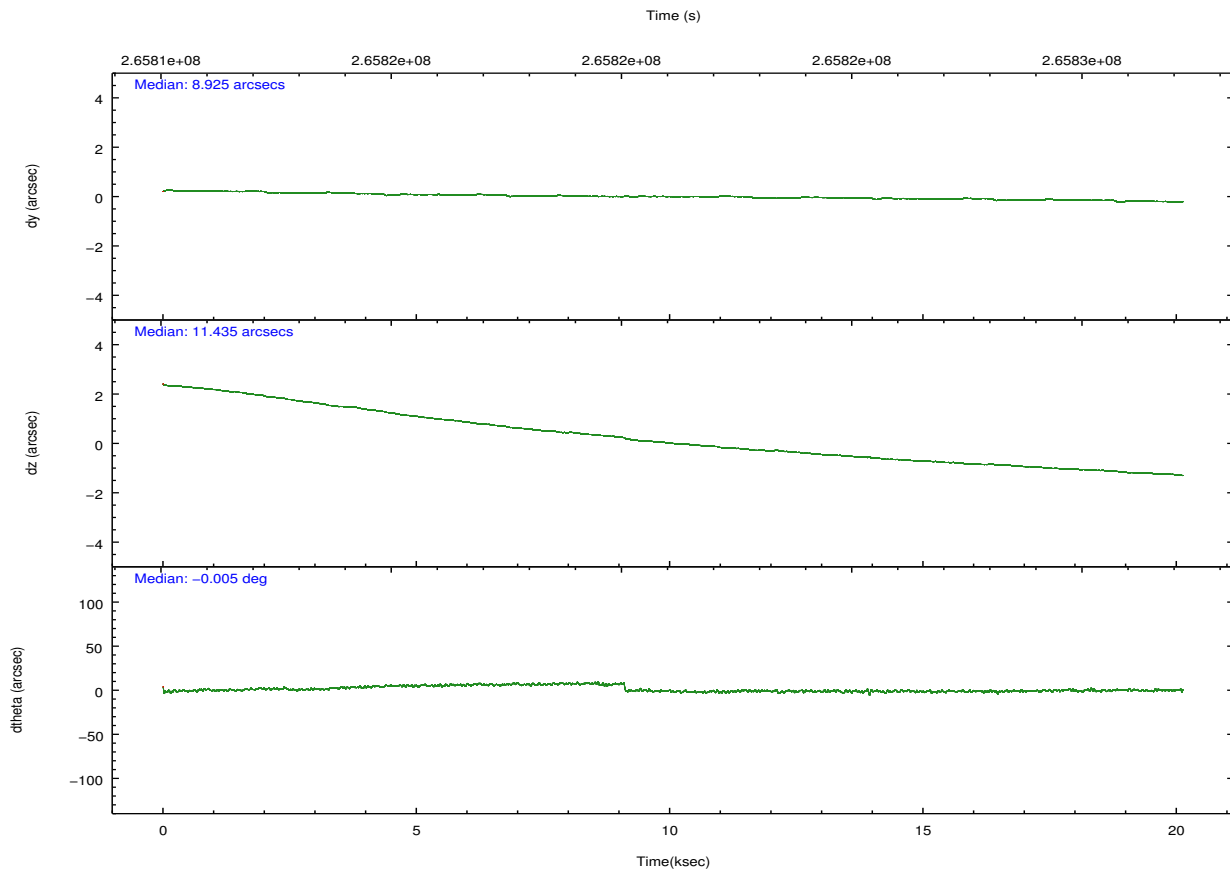
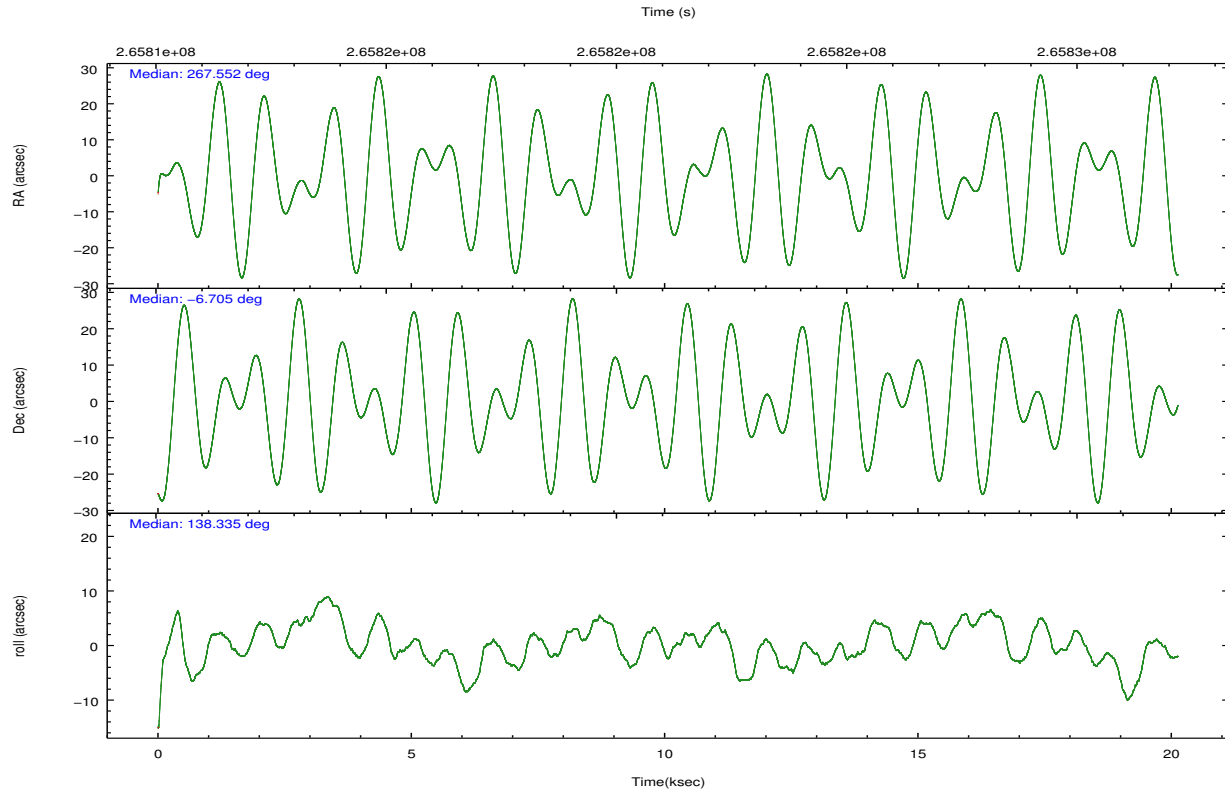
	<b>segment 1</b>	<b>segment 2</b>	<b>segment 3</b>
level 1 events	672465	667372	674584
rejected events	35645	35628	35670
rejected %	5%	5%	5%

## 2.2 Compared Parameters

Parameter	Planned	Actual	Parameter	Planned	Actual
Instrument	HRC	HRC	Obspar format version number	7	7
Detector	HRC-S	HRC-S	Obspar file type	PREDICTED	ACTUAL
Grating	LETG	LETG	Obspar update status	NONE	UPDATED
Data mode	OBSERVING	OBSERVING			
Observation mode	POINTING	POINTING			
[deg] Pointing RA	267.580026	267.5515394053485			
[deg] Pointing Dec	-6.709096	-6.704761592294637			
[deg] Pointing Roll	138.277752	138.3417489575612			
[mm] SIM focus pos	-1.429586	-1.428180813131781			
[mm] SIM defocus	0.1037507710433287	0.1051558262725154			
[mm] SIM translation stage pos	250.455976	250.466033080201			
[mm] SIM translation stage offset	0	-0.01005468664627074			
[s] Observation start time (MET)	265811188.184000	265809959.59947			
Observation start date	2006-06-04T12:25:23	2006-06-04T12:05:59			
[s] Observation end time (MET)	265831188.184000	265831683.45048			
Observation end date	2006-06-04T17:58:43	2006-06-04T18:08:03			

## 2.3 Aspect



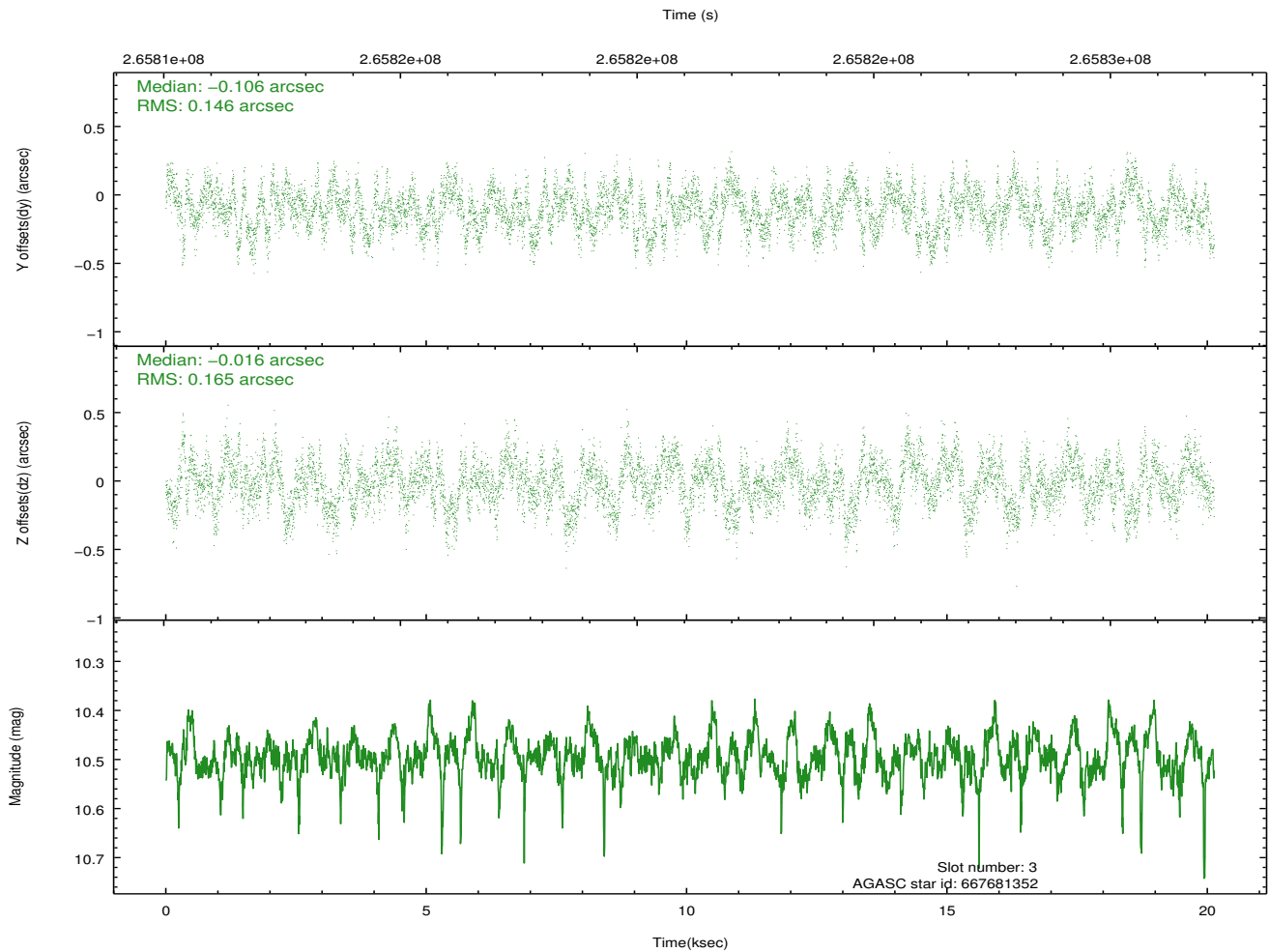
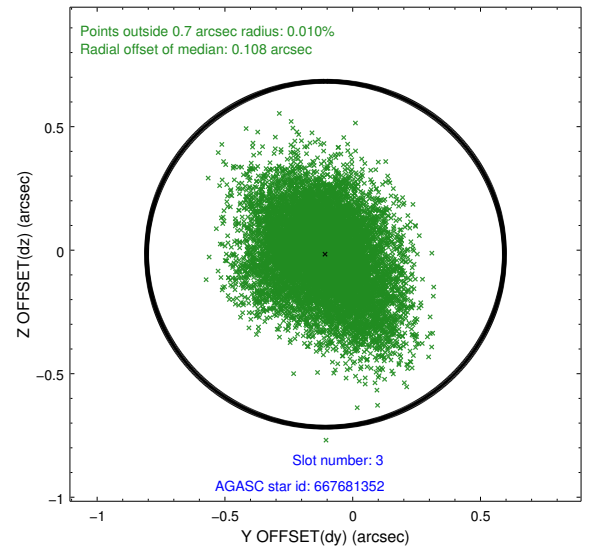
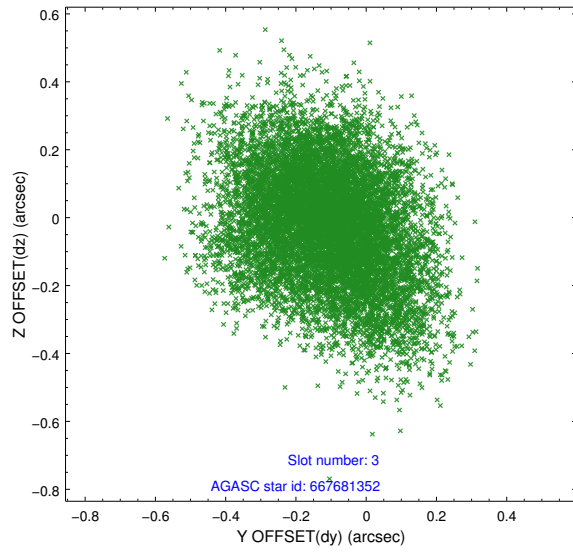


### Slot Statistics

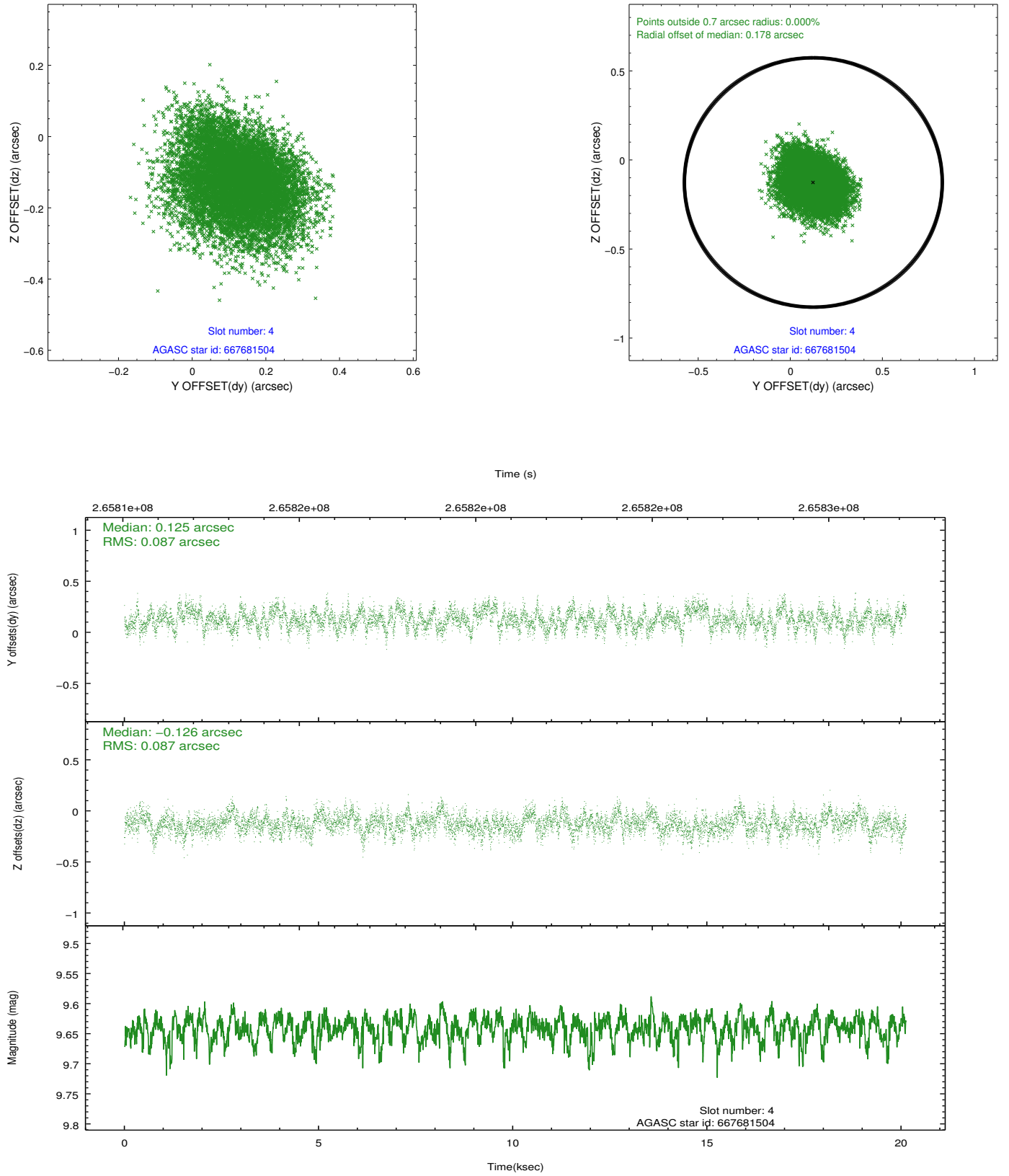
slot	status	id	mag	n_pts	med_dy	med_dz	dr1	dr2	ra	dec	mean_y	mean_z
0	FID	HRC-S-1	7.04	4908	0.093	-0.140	0.006	0.010	0.000000	0.000000	-1163.15	-460.40
1	FID	HRC-S-2	7.02	4910	0.088	-0.122	0.041	0.063	0.000000	0.000000	1236.29	-453.07
2	FID	HRC-S-4	6.99	4908	0.222	-0.041	0.039	0.060	0.000000	0.000000	1235.47	571.72
3	GUIDE	667681352	10.49	9767	-0.106	-0.016	0.237	0.378	267.279458	-7.168186	-298.77	1948.33
4	GUIDE	667681504	9.64	9790	0.125	-0.126	0.131	0.213	267.752861	-6.895149	-906.99	88.86
5	GUIDE	667681872	9.47	9810	-0.153	0.124	0.113	0.181	267.641810	-6.050285	1413.25	-1916.36
6	GUIDE	667683168	9.35	9804	0.098	0.025	0.119	0.192	267.624316	-7.281951	-1490.21	1433.85
7	GUIDE	667683800	8.88	9816	0.040	-0.001	0.097	0.154	266.906535	-6.565778	2140.19	1219.62

## 2.4 Star Slots

### 2.4.1 Slot 3

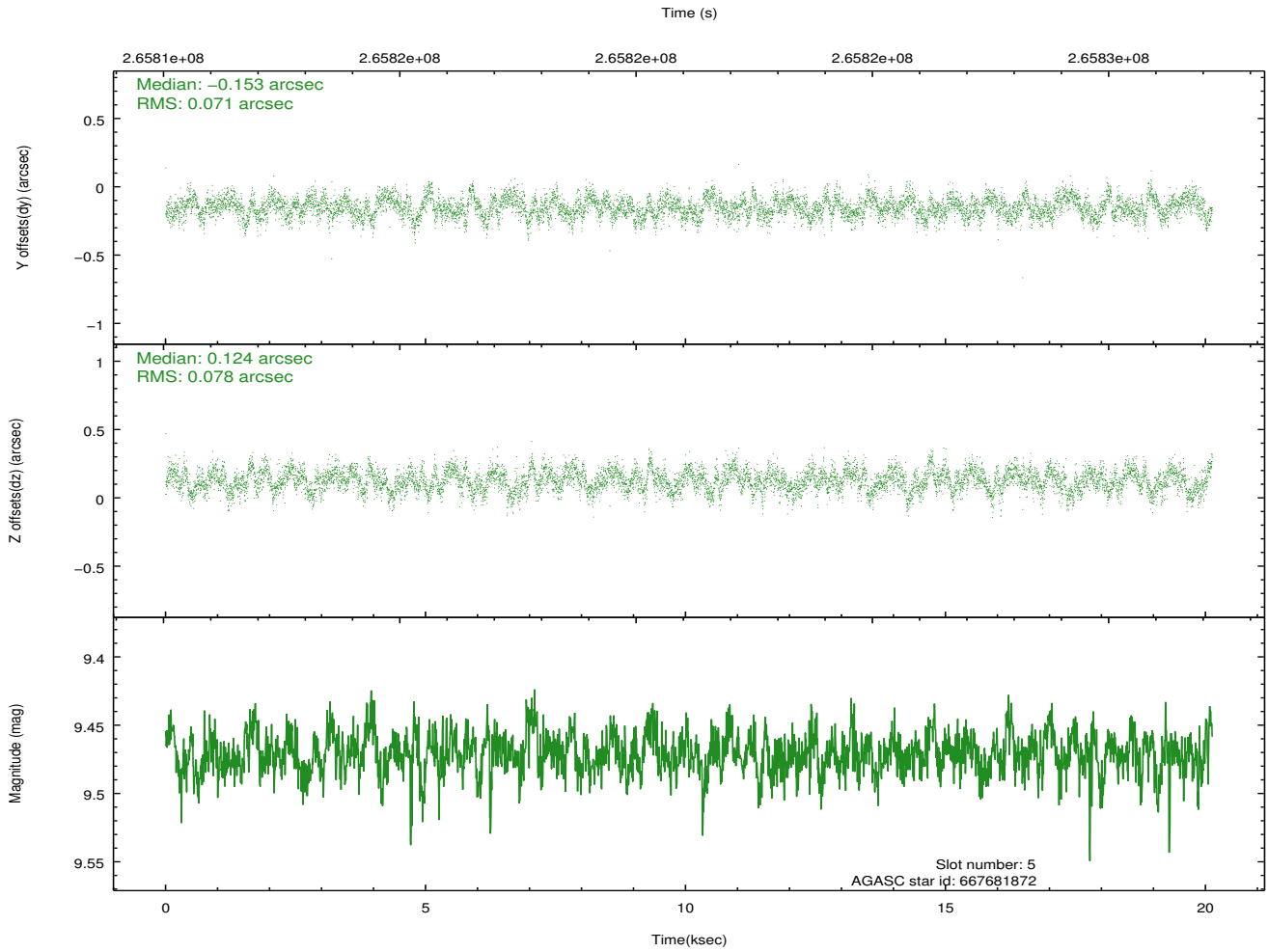
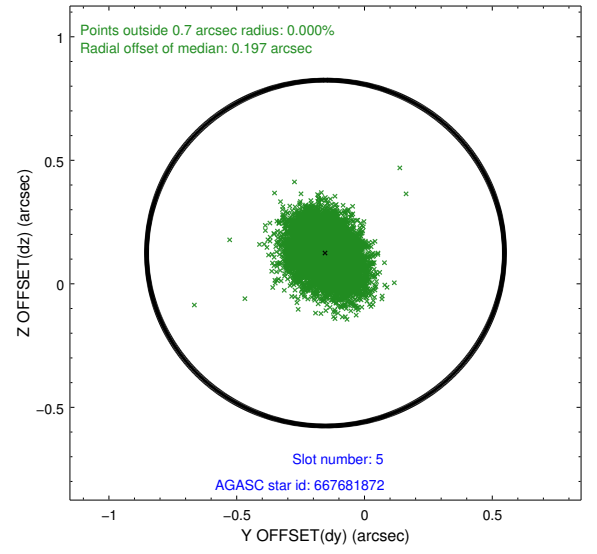
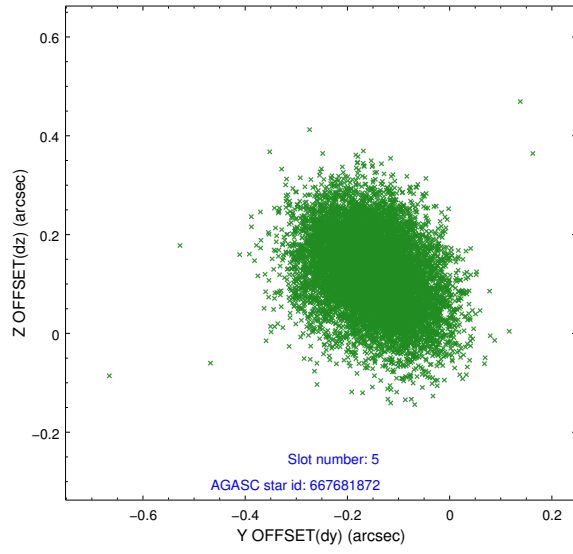


## 2.4.2 Slot 4

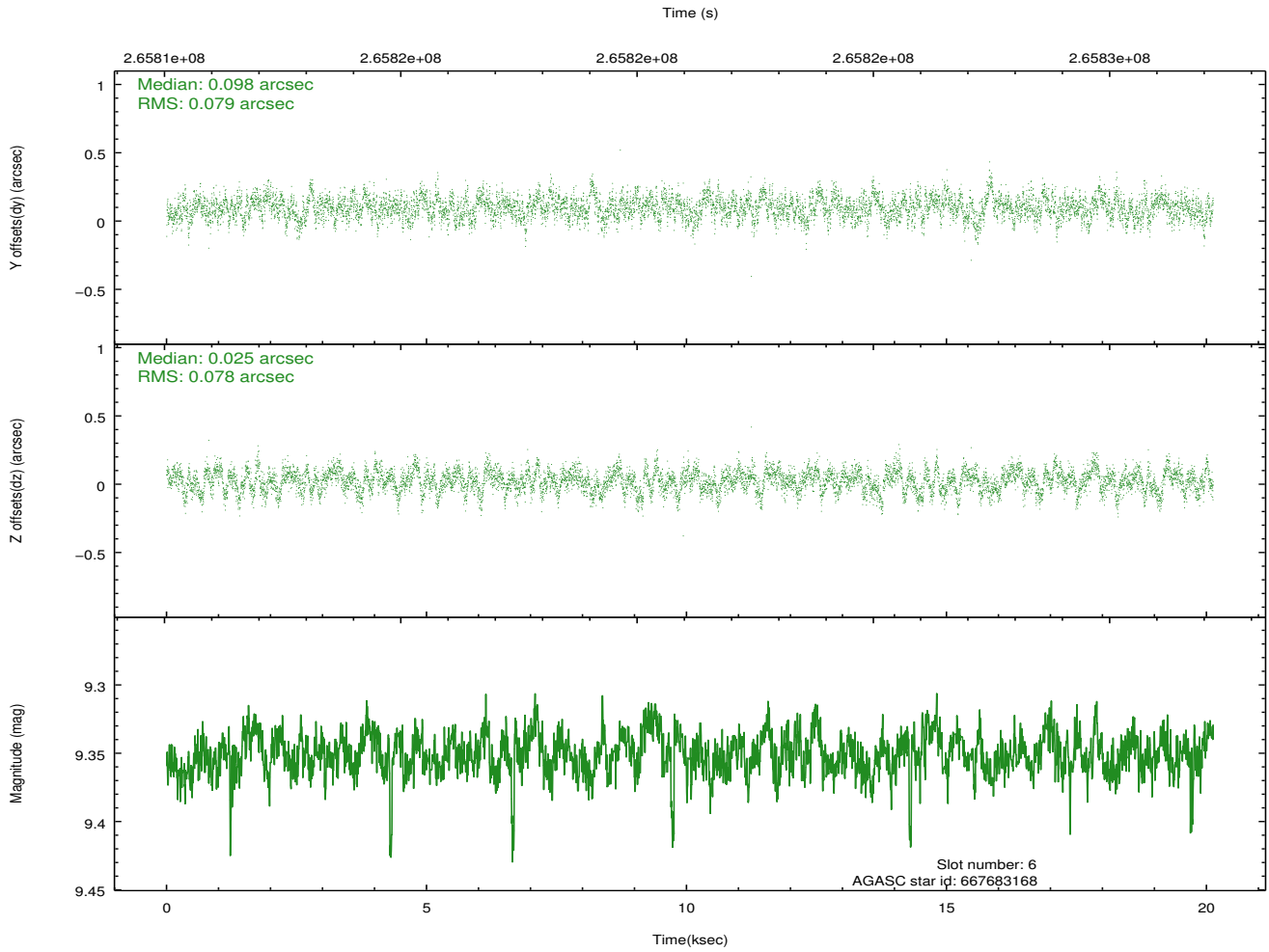
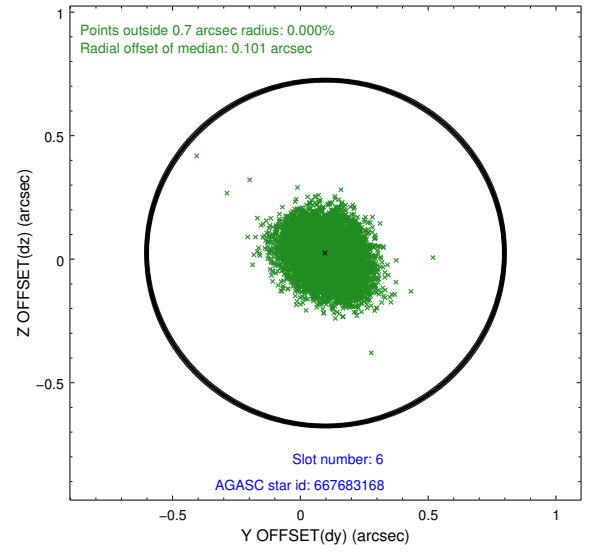
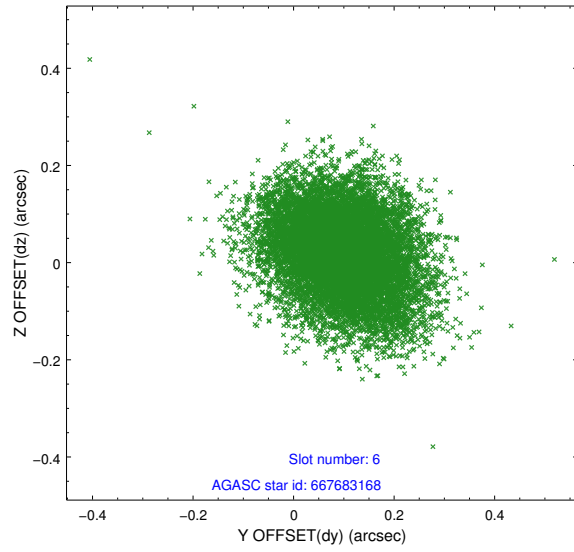




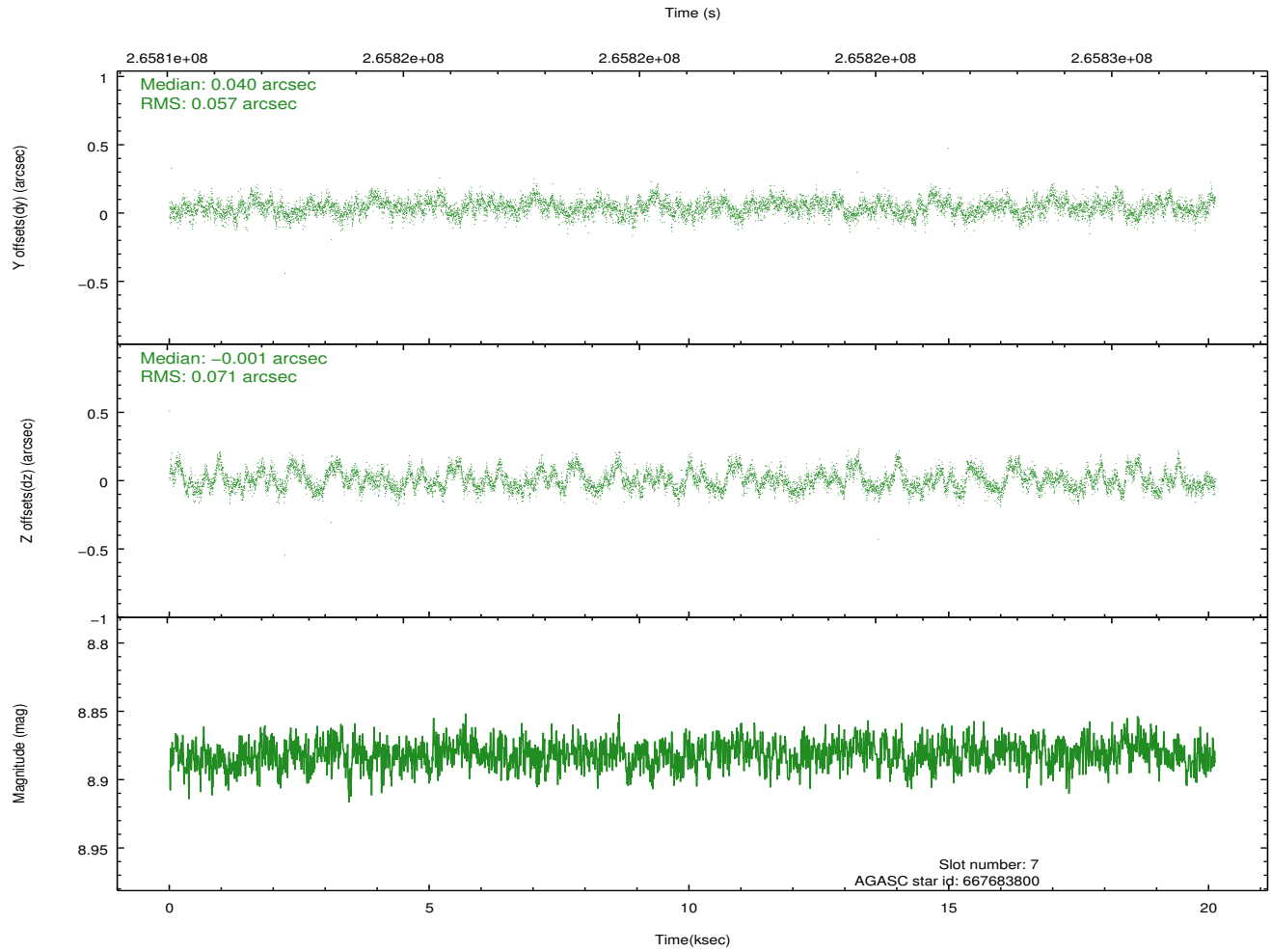
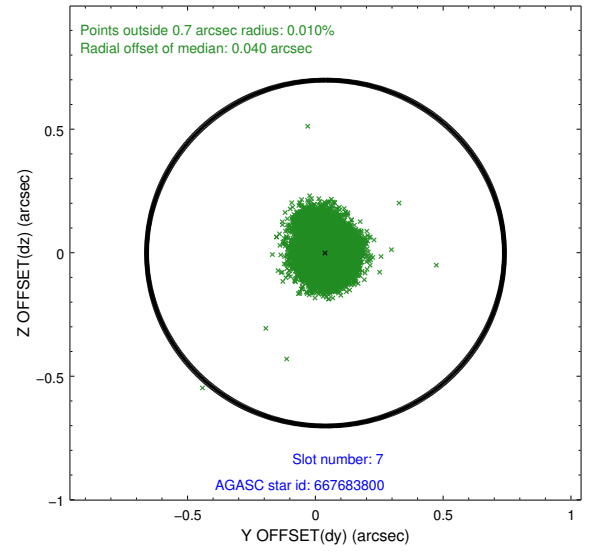
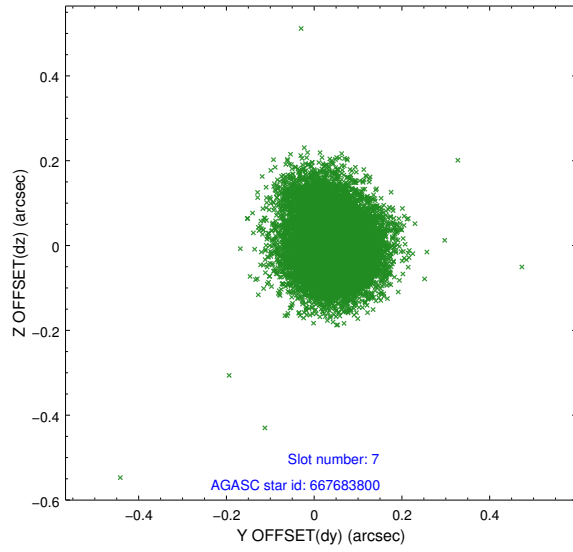
### 2.4.3 Slot 5



## 2.4.4 Slot 6

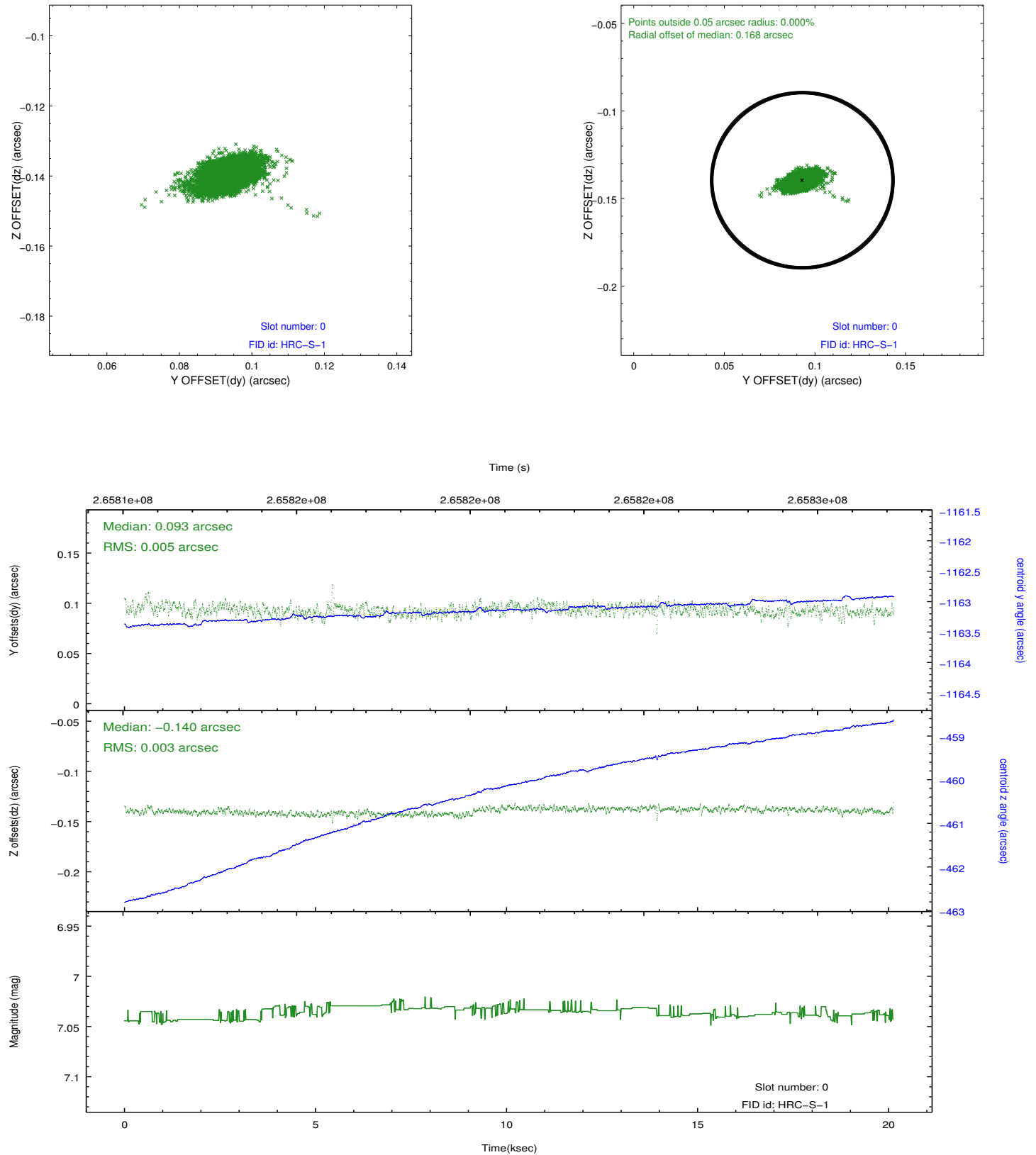


### 2.4.5 Slot 7

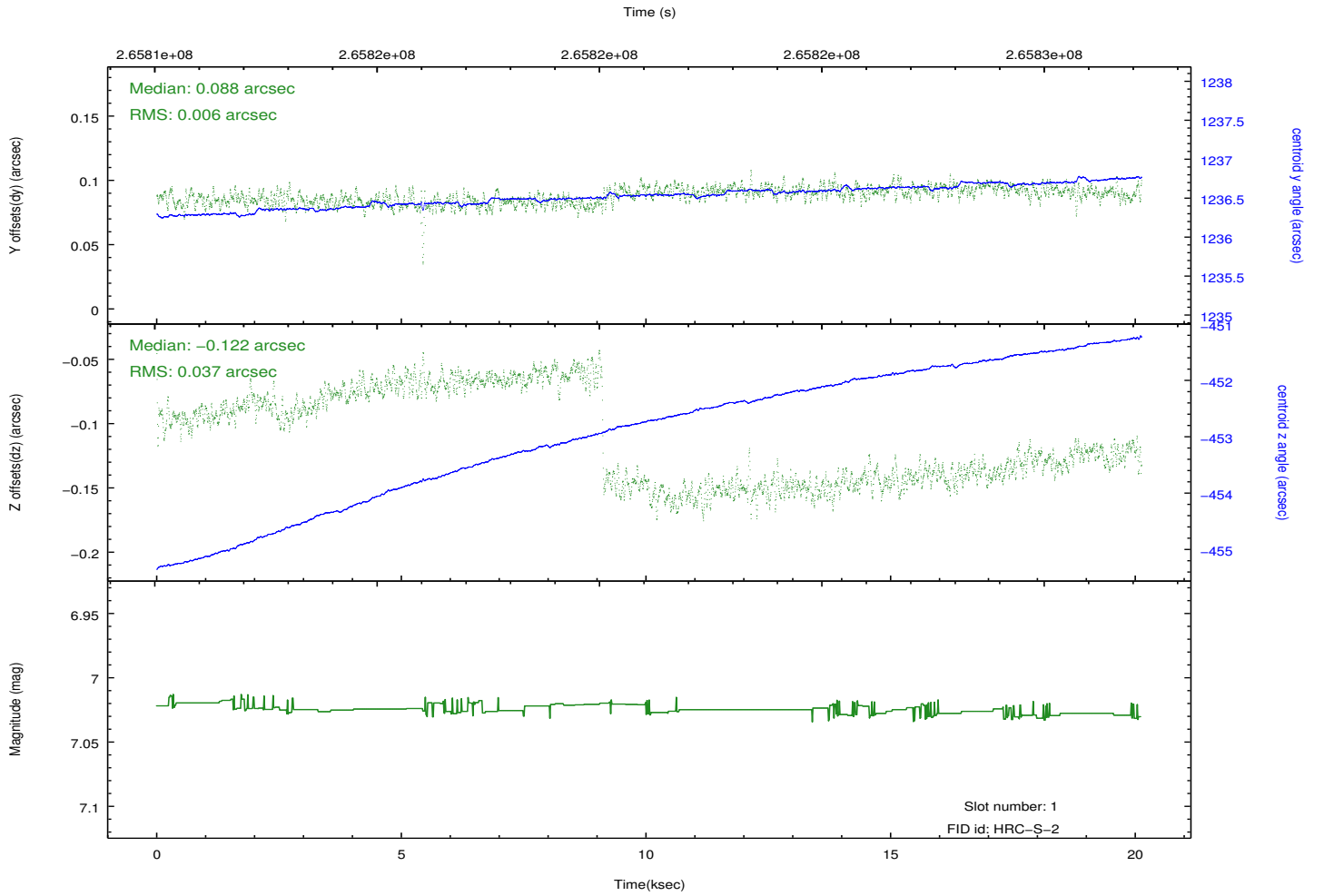
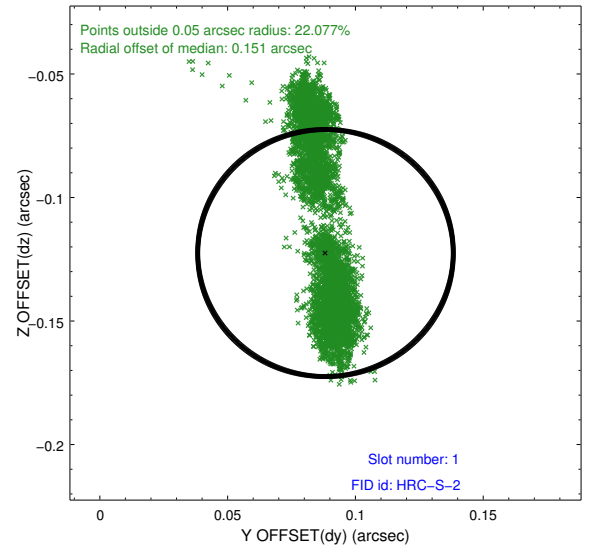
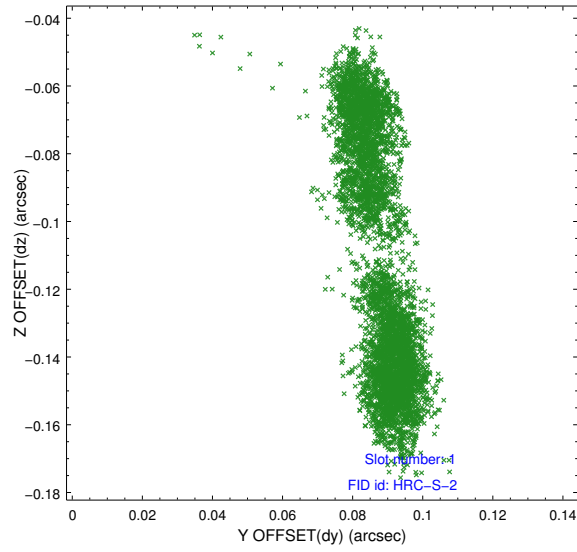


## 2.5 FID Slots

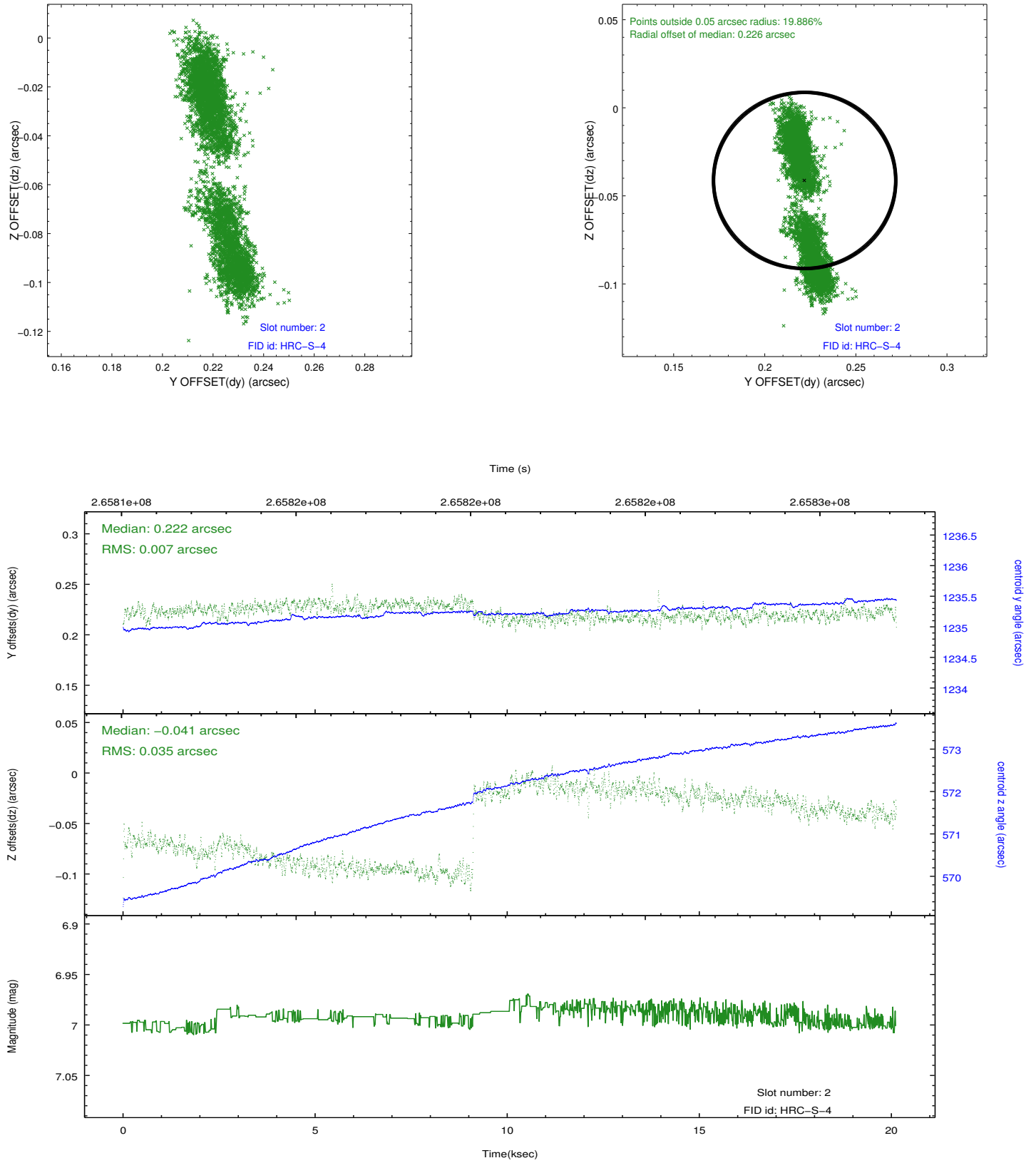
### 2.5.1 Slot 0



## 2.5.2 Slot 1

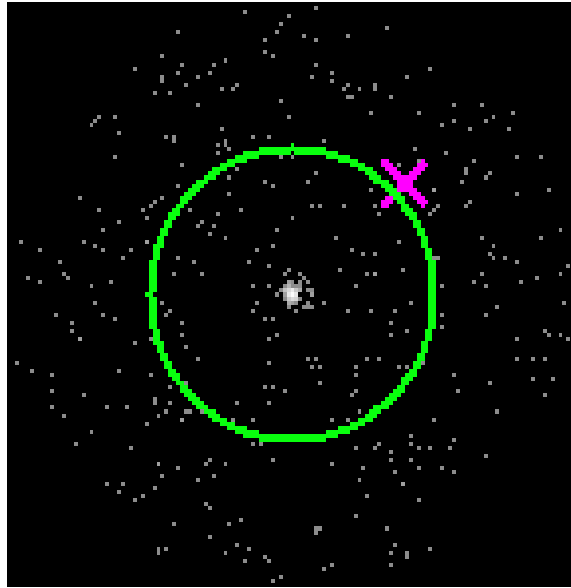


### 2.5.3 Slot 2

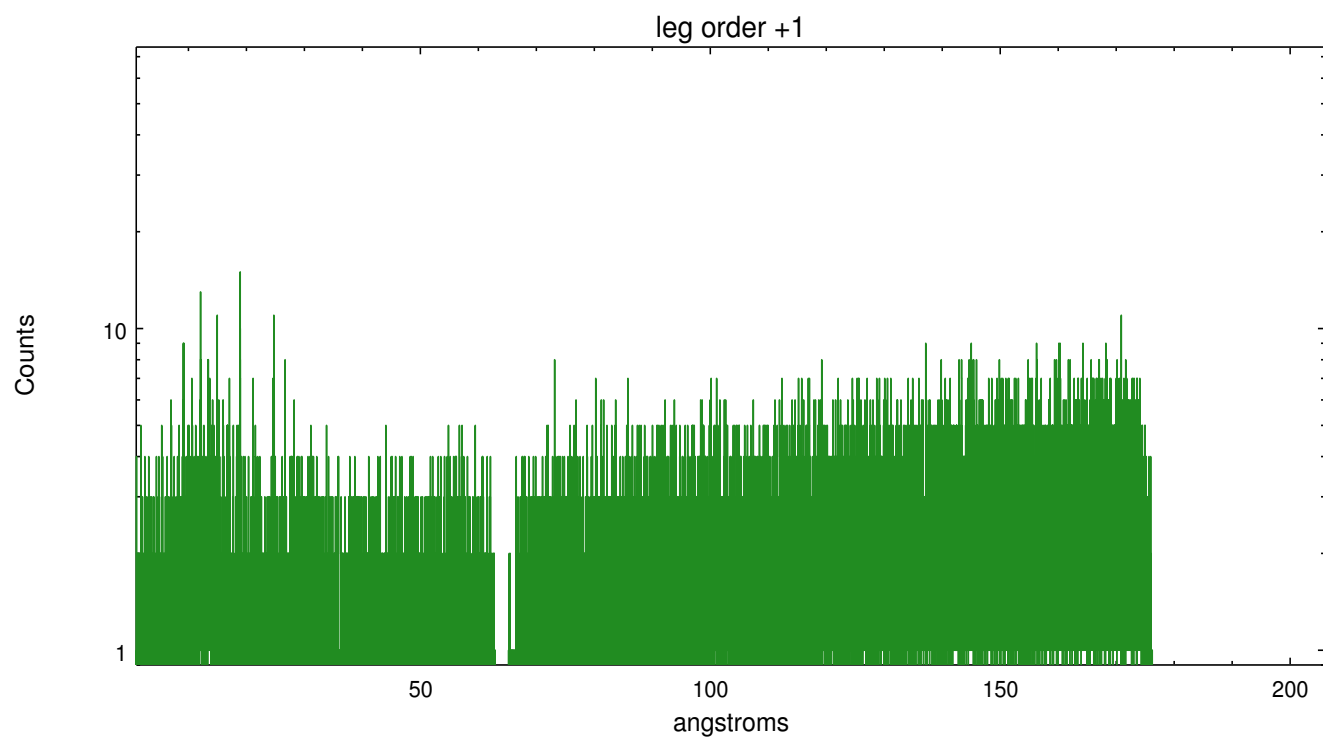
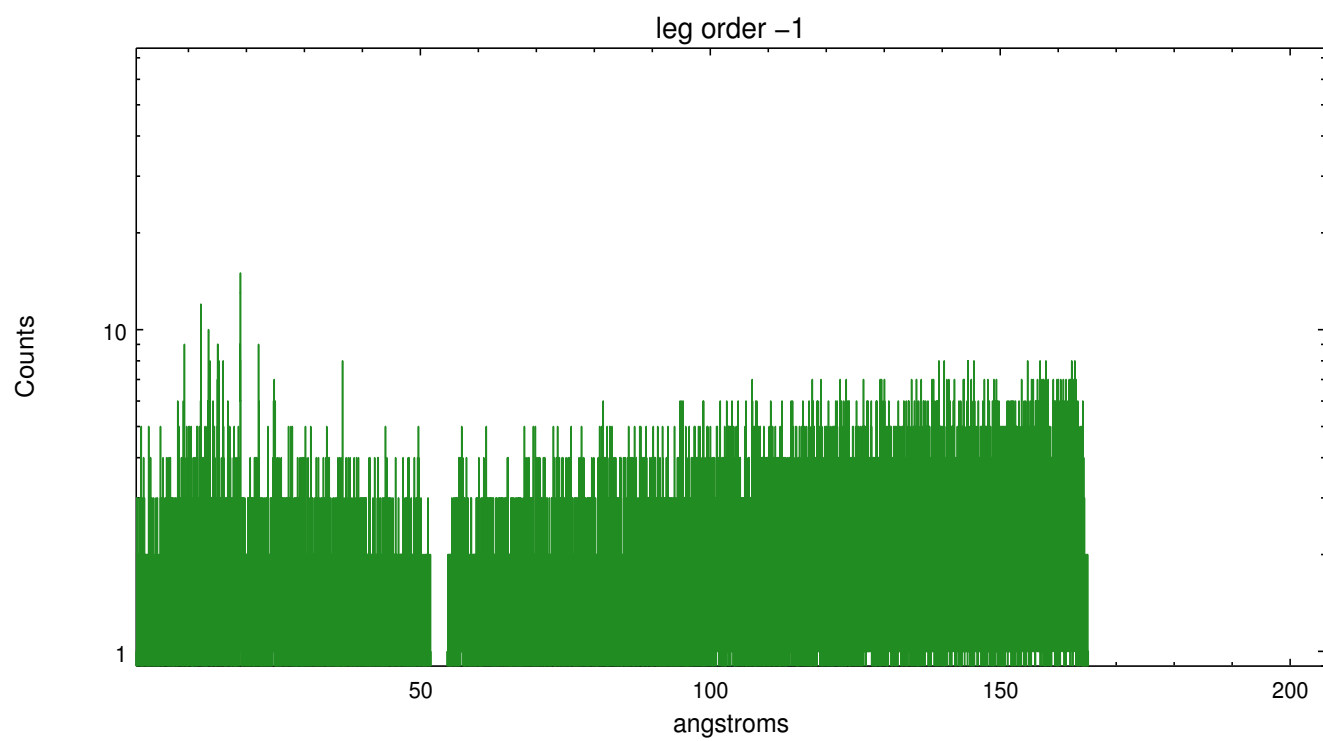


## 3 Gratings

### 3.1 LETG Arm



LETG Zero Order





## A Summary

### A.1 Status

V&V Scientist	Joy Nichols
V&V Date (YYYY-MM-DD)	2012.08.17
V&V Edition	1
V&V Disposition and Status	OK
V&V Charge Time	20.1261321

### A.2 Comments