

V&V Reference Report

L2 ASCDS Version : 8.4.3.1

Observation 7158 - L2 Version 2
Chandra X-Ray Center

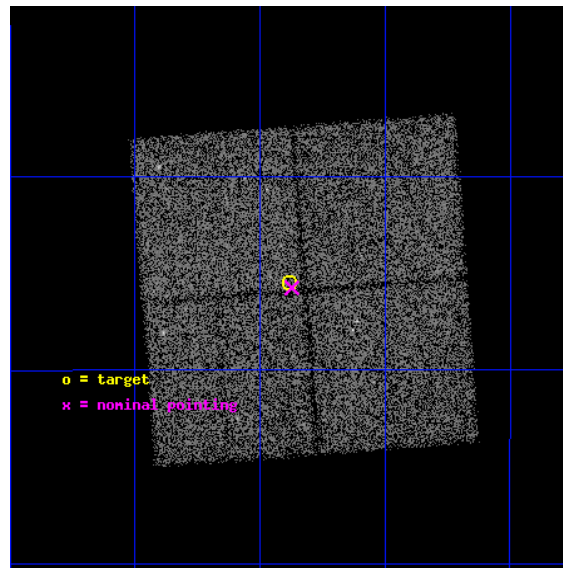
L2 Processing Date : Apr 12 2012

Contents

1	Front	2
2	OBI	3
2.1	OBI	3
2.1.1	Images	3
2.1.2	Bias	3
2.1.3	Parameters	4
2.1.4	Events	4
2.2	Compared Parameters	5
2.3	Aspect	6
2.4	Star Slots	9
2.4.1	Slot 3	9
2.4.2	Slot 4	10
2.4.3	Slot 5	11
2.4.4	Slot 6	12
2.4.5	Slot 7	13
2.5	FID Slots	14
2.5.1	Slot 0	14
2.5.2	Slot 1	15
2.5.3	Slot 2	16
A	Summary	17
A.1	Status	17
A.2	Comments	17

1 Front

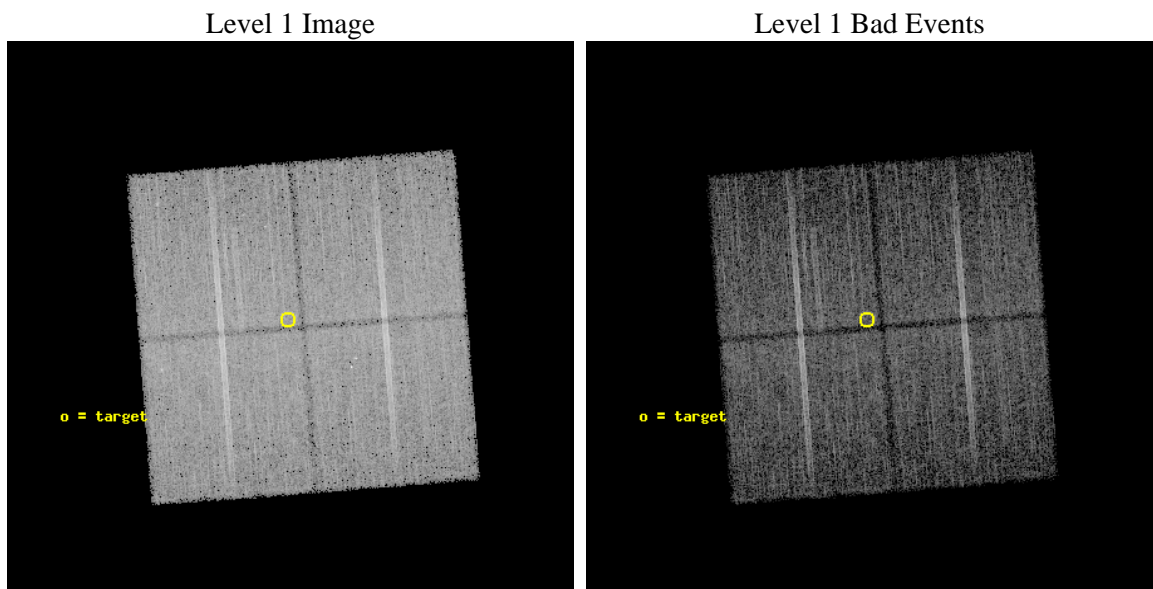
seq_num	600596	Sequence number
obs_id	7158	Observation id
title	Galactic Bulge Latitude Survey	Proposal title
observer	Professor Johnathan Grindlay	Principal investigator
object	GBW2	Source name
dtcycle	0	
cycle	P	events from which exps? Prim/Second/Both
ra_targ	267.095417	Observer's specified target RA [deg]
dec_targ	-29.091833	Observer's specified target Dec [deg]
ra_nom	267.09298143056	Nominal RA [deg]
dec_nom	-29.095956735707	Nominal Dec [deg]
roll_nom	265.60050316692	Nominal Roll [deg]
revision	2	Processing version of data
ontime	14253.800109625	Sum of GTIs [s]
livetime	14067.563717698	Livetime [s]
ontime0	14253.800109625	Sum of GTIs [s]
ontime1	14250.659139335	Sum of GTIs [s]
ontime2	14253.800109625	Sum of GTIs [s]
ontime3	14253.800109625	Sum of GTIs [s]
l2events	63591	Number of level 2 events



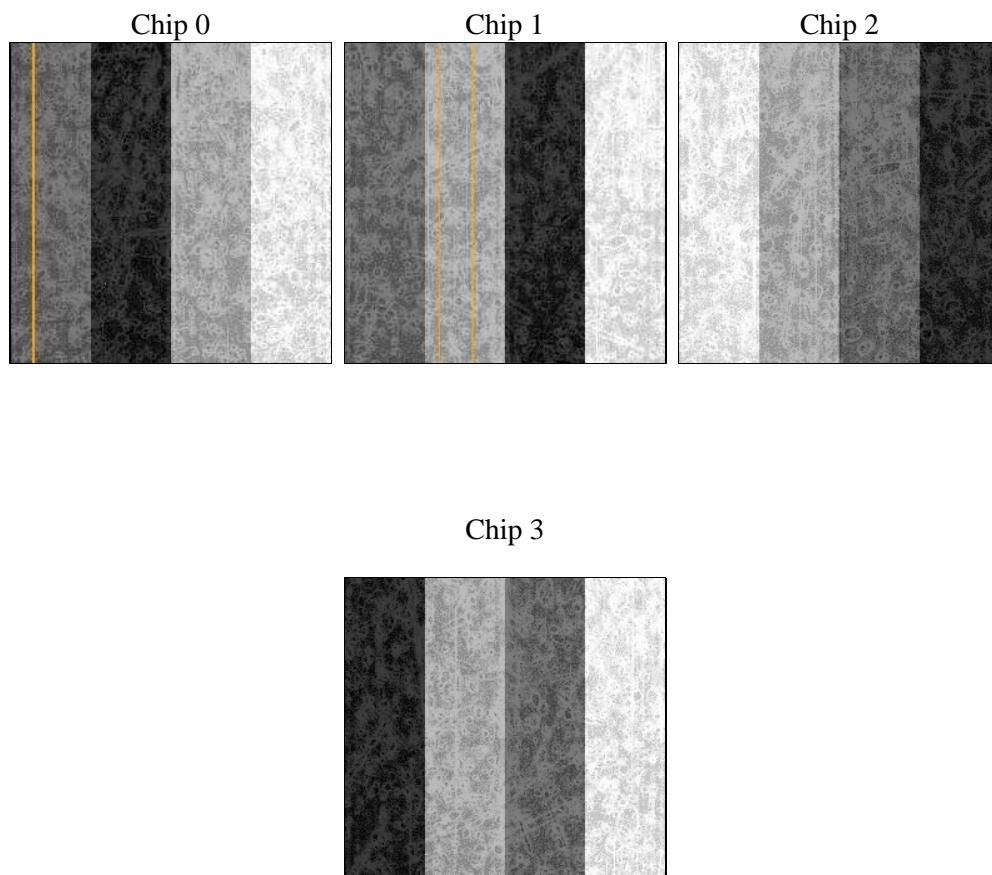
2 OBI

2.1 OBI

2.1.1 Images



2.1.2 Bias



2.1.3 Parameters

obi_num	1	Obi number	sched_exp_time	14200.000000	[s] Scheduled observation exposure time
ascdsver	8.4.3.1	Processing system revision	ontime	14253.800109625	Sum of GTIs [s]
caldsver	4.4.9	 	ontime0	14253.800109625	Sum of GTIs [s]
date	2012-04-12T09:23:21	Date and time of file creation	ontime1	14250.659139335	Sum of GTIs [s]
revision	2	Processing version of data	ontime2	14253.800109625	Sum of GTIs [s]
			ontime3	14253.800109625	Sum of GTIs [s]
			l1events	522488	Number of level 1 events

2.1.4 Events

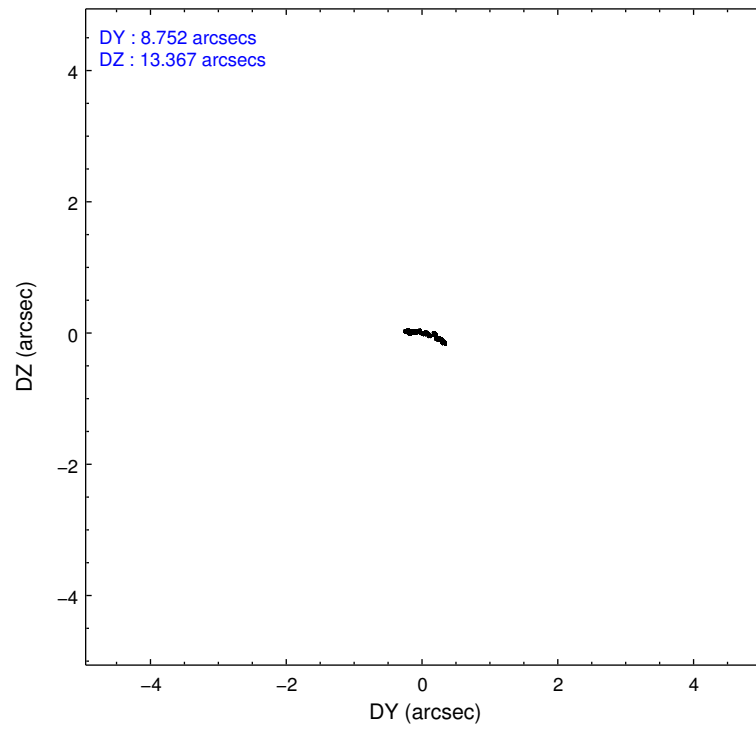
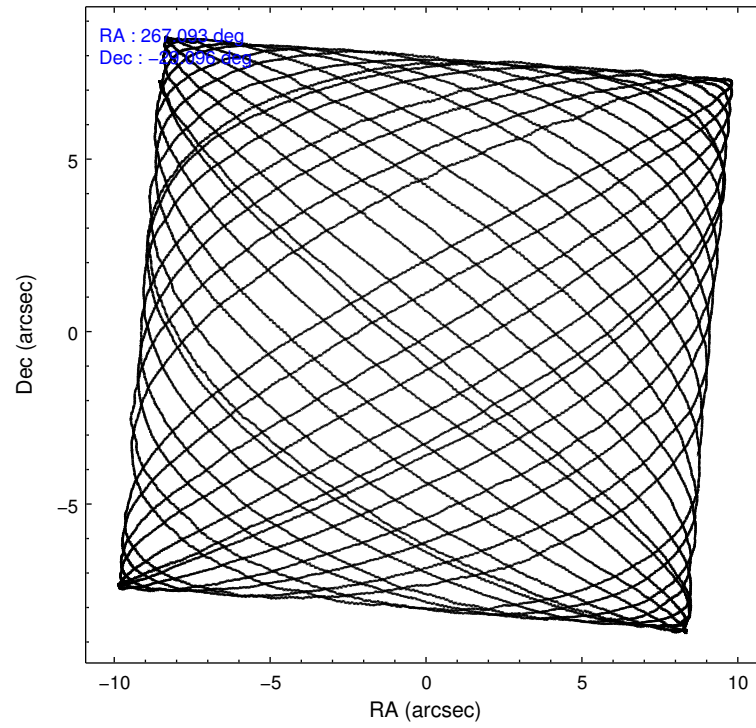
	ccd 0	ccd 1	ccd 2	ccd 3
level 1 events	125128	126859	135866	134635
rejected events	106610	108749	117750	115999
rejected %	85%	85%	86%	86%

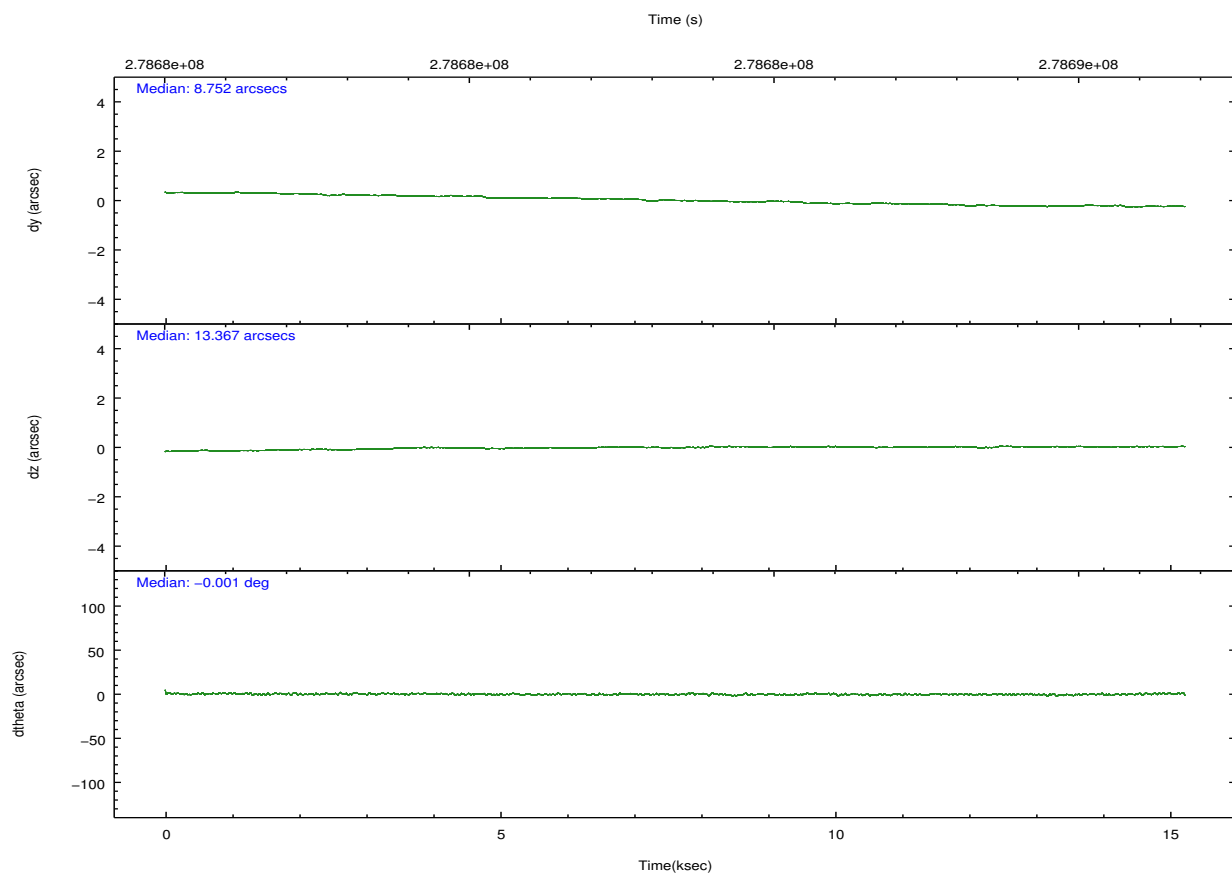
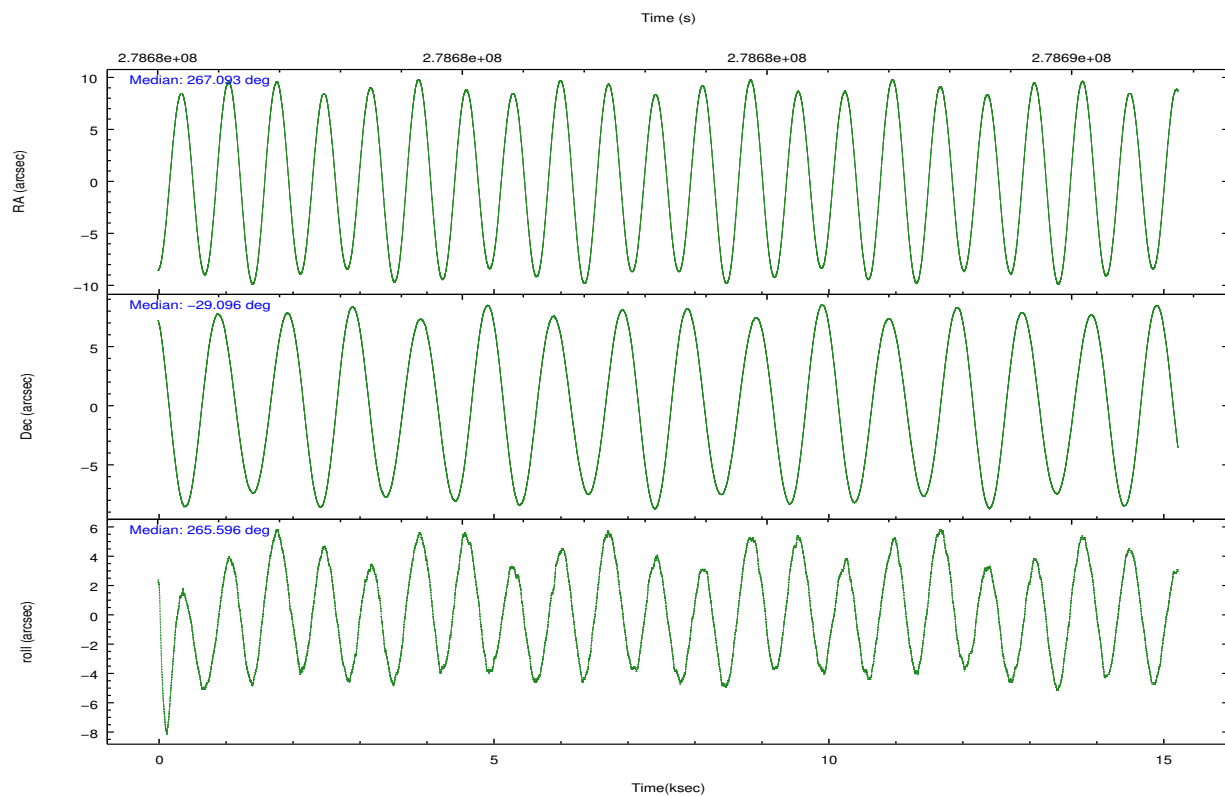
	ccd 0	ccd 1	ccd 2	ccd 3
grade 0 events	8657	7516	8950	9130
	6%	5%	6%	6%
grade 1 events	101	86	96	107
	0%	0%	0%	0%
grade 2 events	3733	3965	3565	3504
	2%	3%	2%	2%
grade 3 events	1688	1684	1410	1551
	1%	1%	1%	1%
grade 4 events	1540	1611	1562	1566
	1%	1%	1%	1%
grade 5 events	5148	5841	5060	6063
	4%	4%	3%	4%
grade 6 events	2907	3343	2640	2896
	2%	2%	1%	2%
grade 7 events	101354	102813	112583	109818
	81%	81%	82%	81%

2.2 Compared Parameters

Parameter	Planned	Actual	Parameter	Planned	Actual
Instrument	ACIS	ACIS	Obspar format version number	7	7
Detector	ACIS-0123	ACIS-0123	Obspar file type	PREDICTED	ACTUAL
Grating	NONE	NONE	Obspar update status	NONE	UPDATED
Data mode	VFAINT	VFAINT	Number of optional ACIS chips dropped	0	0
Observation mode	POINTING	POINTING	On-chip summing requested	N	N
[deg] Pointing RA	267.079330	267.0929814305601	Subarray requested	NONE	NONE
[deg] Pointing Dec	-29.071305	-29.0959567357072	Alternating exposures requested	N	N
[deg] Pointing Roll	265.385185	265.6005031669201	[s] Primary exposure time	0.000000	3.1
[mm] SIM focus pos	-0.782348	-0.7809083437167272			
[mm] SIM defocus	0	0.001439871863259334			
[mm] SIM translation stage pos	-233.592463	-233.5874344608287			
[mm] SIM translation stage offset	0	-0.005018542100998502			
[s] Observation start time (MET)	278676787.184000	278675496.77855			
Observation start date	2006-10-31T10:12:02	2006-10-31T09:51:36			
[s] Observation end time (MET)	278690987.184000	278691121.36678			
Observation end date	2006-10-31T14:08:42	2006-10-31T14:12:01			
Read mode	TIMED	TIMED			

2.3 Aspect



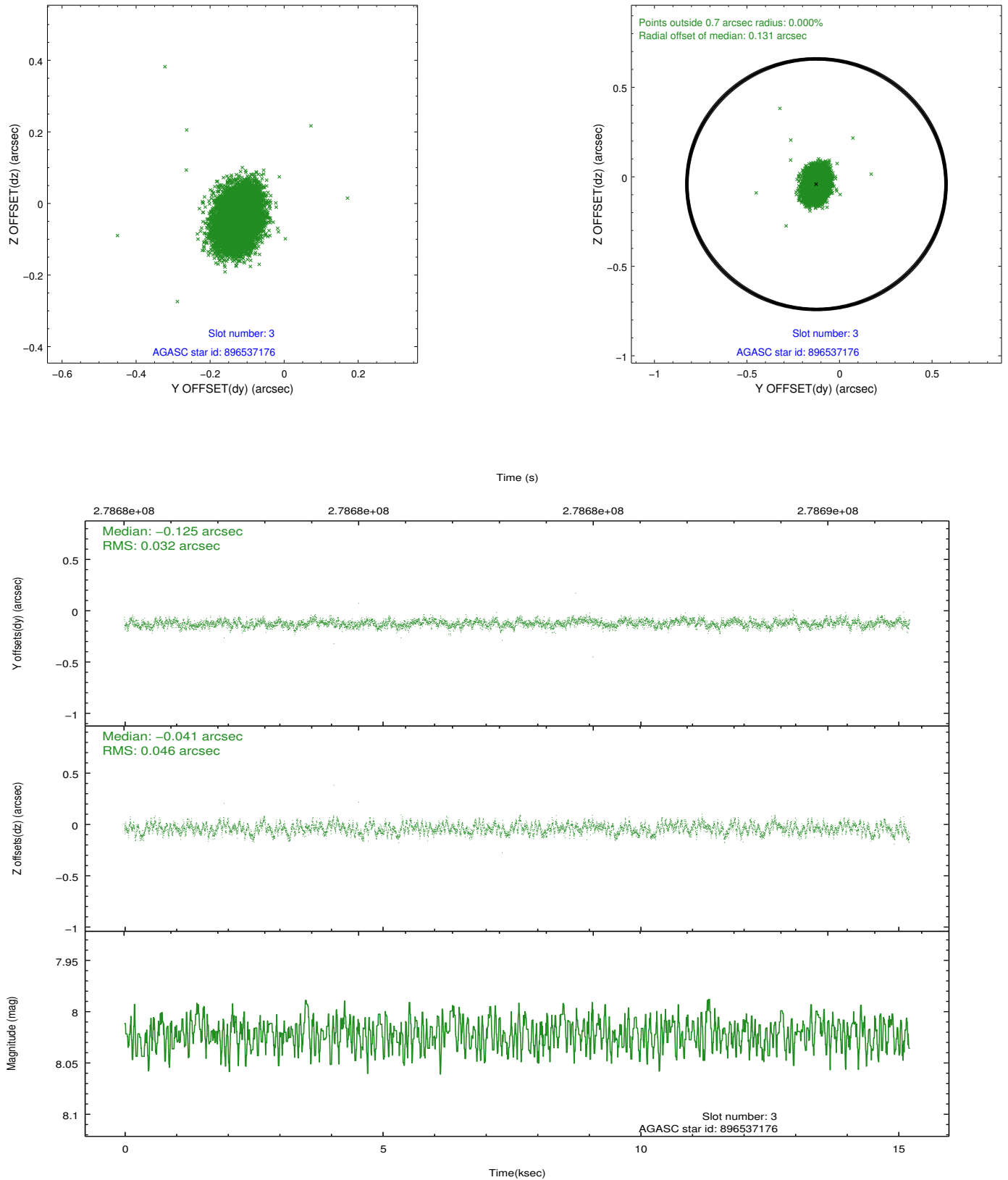


Slot Statistics

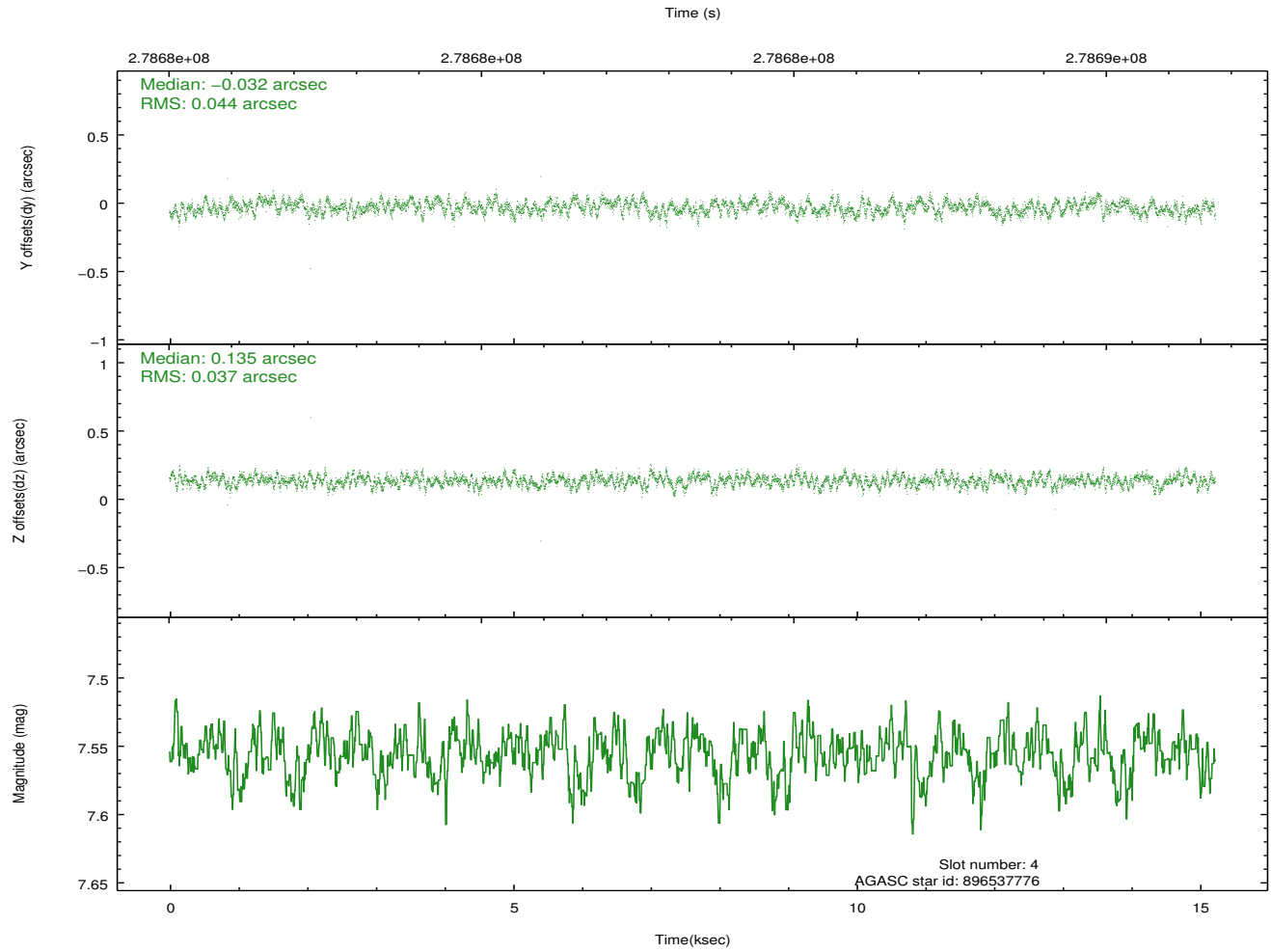
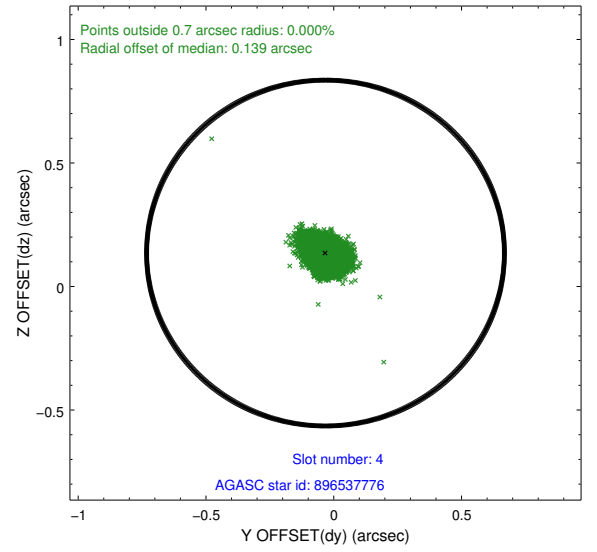
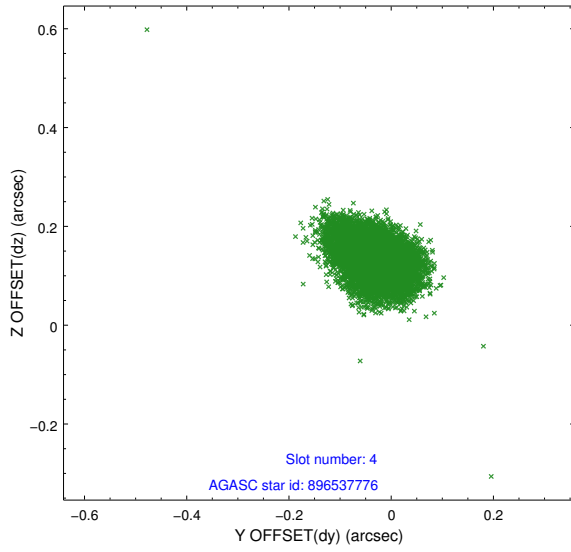
slot	status	id	mag	n_pts	med_dy	med_dz	dr1	dr2	ra	dec	mean_y	mean_z
0	FID	ACIS-I-2	7.14	3714	-0.101	-0.077	0.010	0.016	0.000000	0.000000	-763.43	-843.34
1	FID	ACIS-I-4	7.19	3713	0.216	0.080	0.008	0.014	0.000000	0.000000	2150.84	1062.80
2	FID	ACIS-I-5	7.23	3714	-0.216	0.065	0.009	0.015	0.000000	0.000000	-1816.96	1061.03
3	GUIDE	896537176	8.02	7426	-0.125	-0.041	0.059	0.096	266.498272	-28.678259	-1257.69	-1942.70
4	GUIDE	896537776	7.56	7426	-0.032	0.135	0.060	0.098	266.655684	-29.665673	2242.26	-1148.37
5	GUIDE	896541360	7.72	7424	-0.000	0.029	0.065	0.102	266.684478	-29.453744	1474.93	-1122.61
6	GUIDE	896543712	8.24	7426	0.163	0.000	0.066	0.109	267.764551	-28.659720	-1644.12	2038.82
7	GUIDE	896534664	8.19	7422	-0.012	-0.121	0.064	0.103	266.405570	-28.407461	-2203.99	-2318.28

2.4 Star Slots

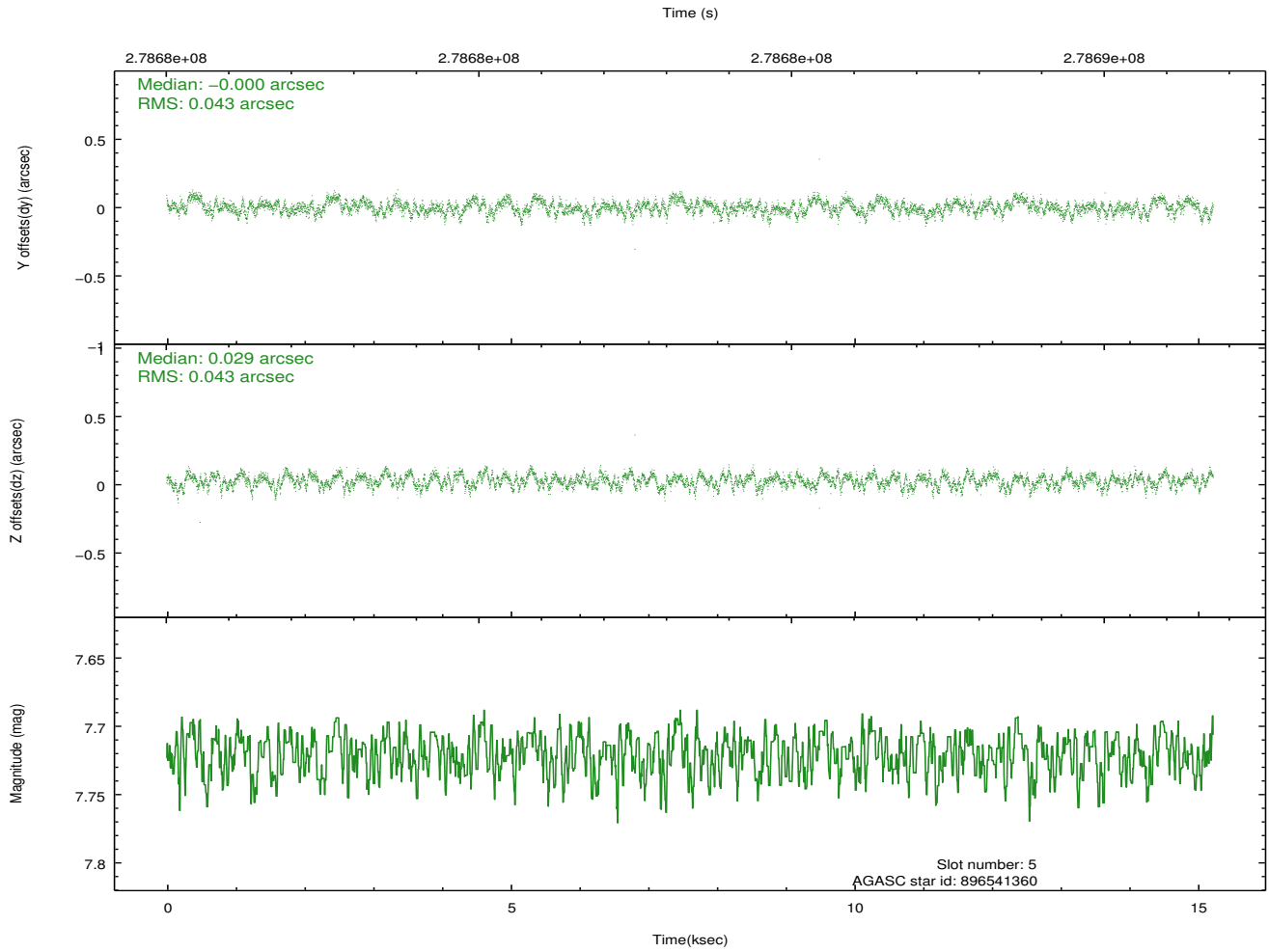
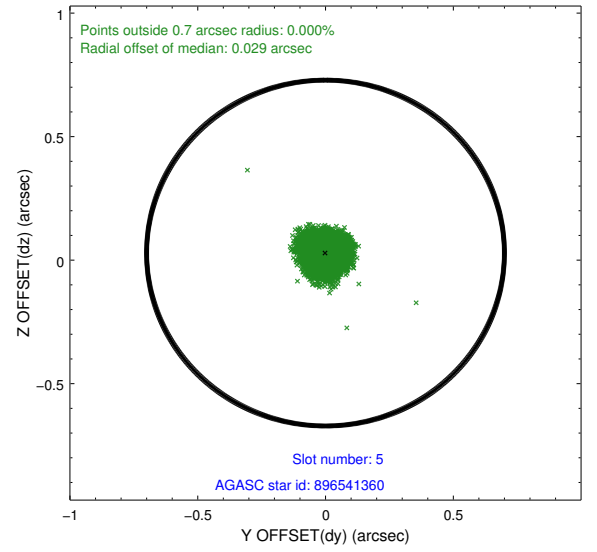
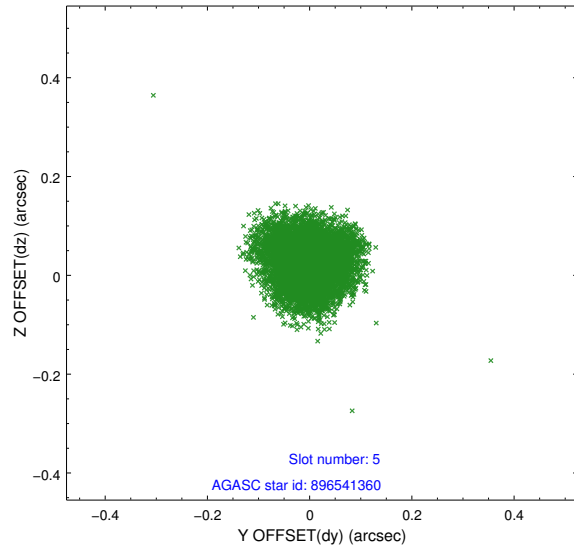
2.4.1 Slot 3



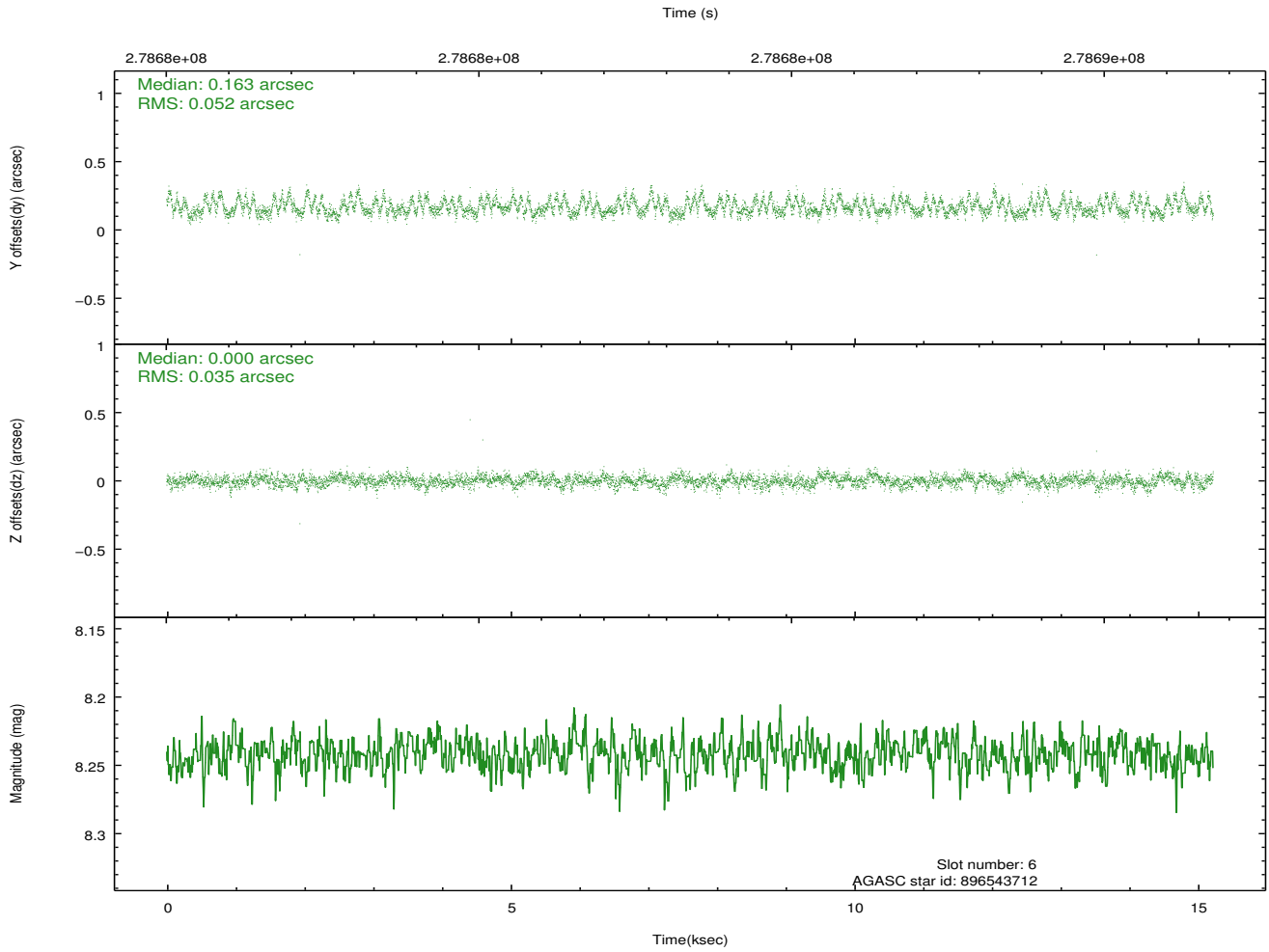
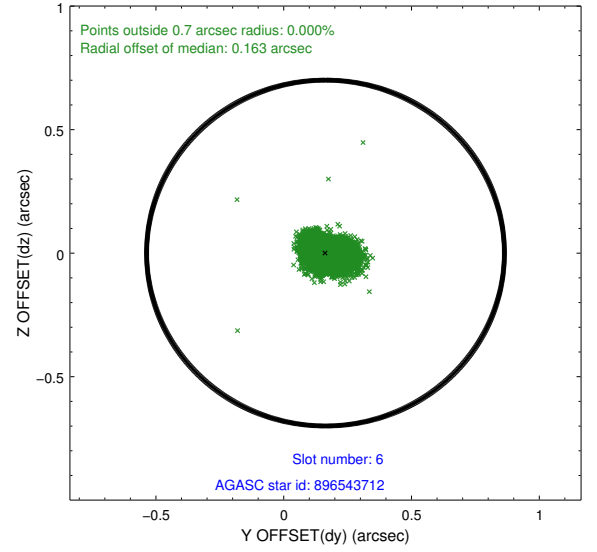
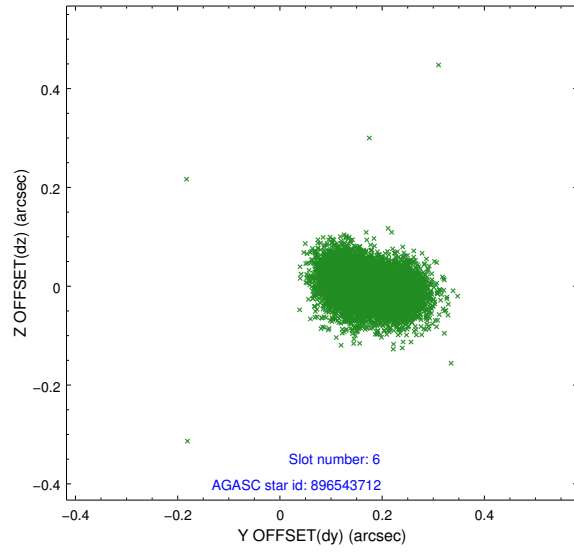
2.4.2 Slot 4



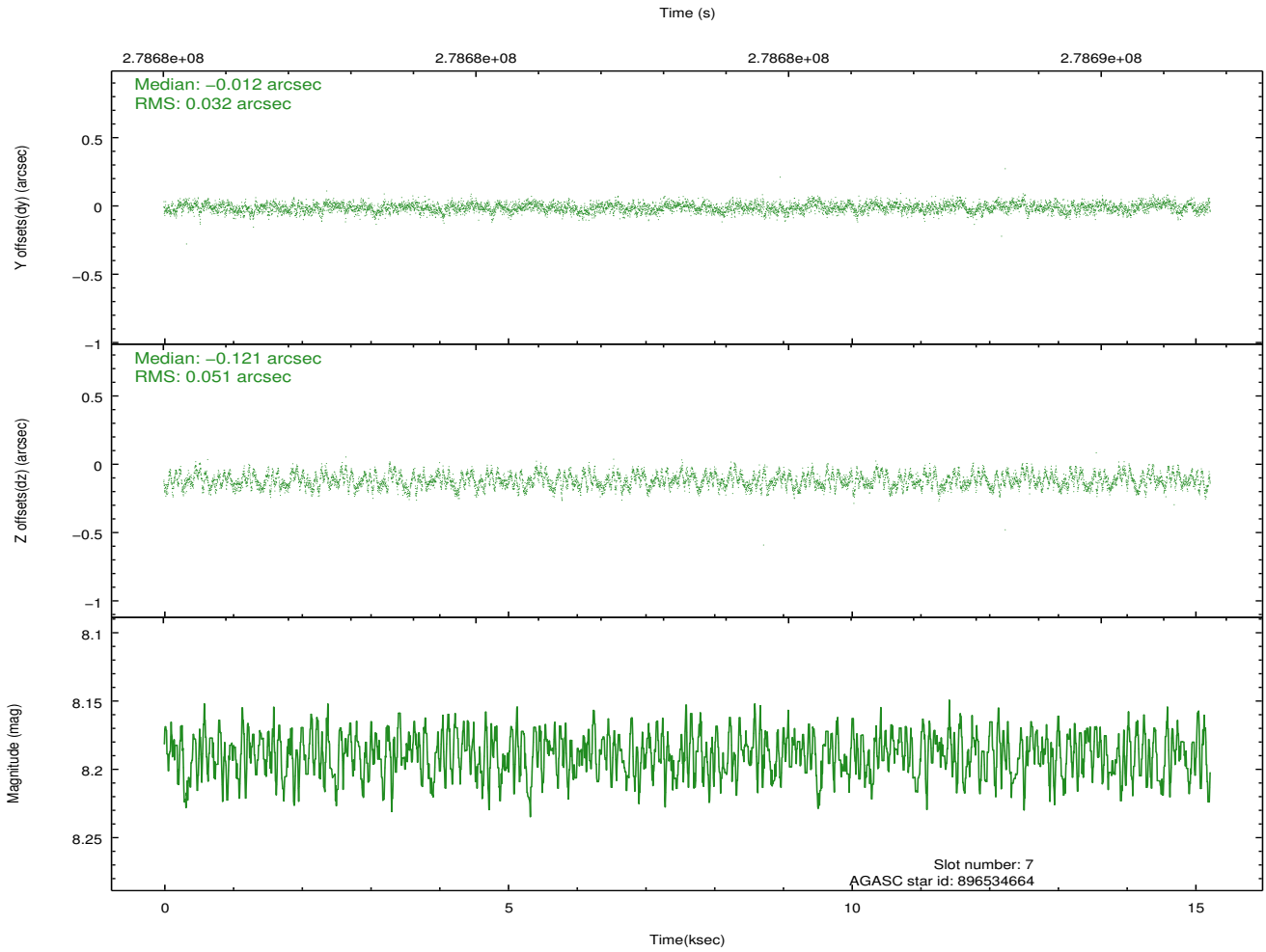
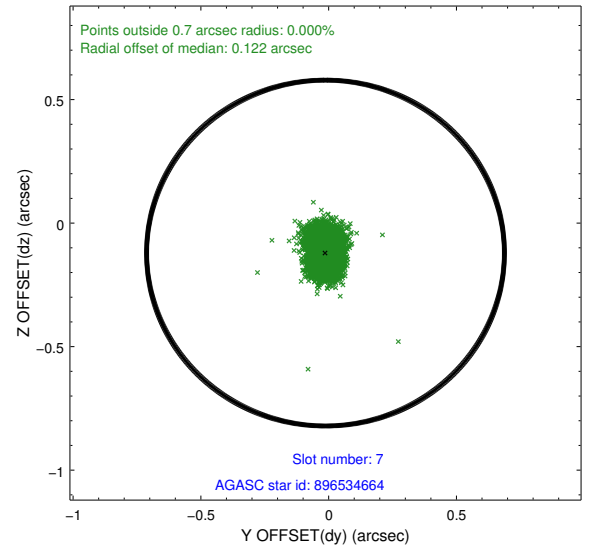
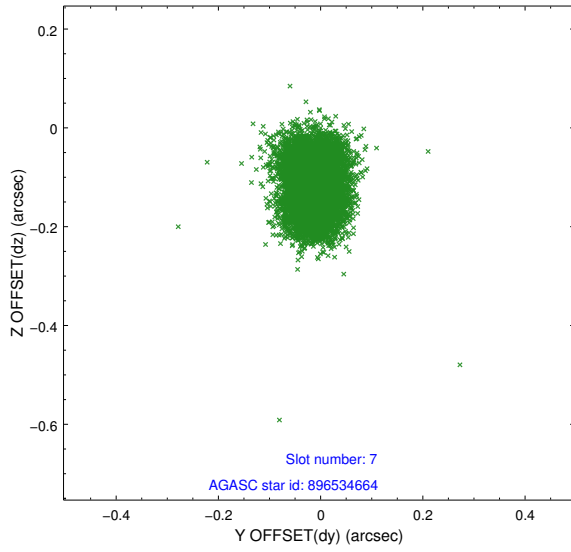
2.4.3 Slot 5



2.4.4 Slot 6

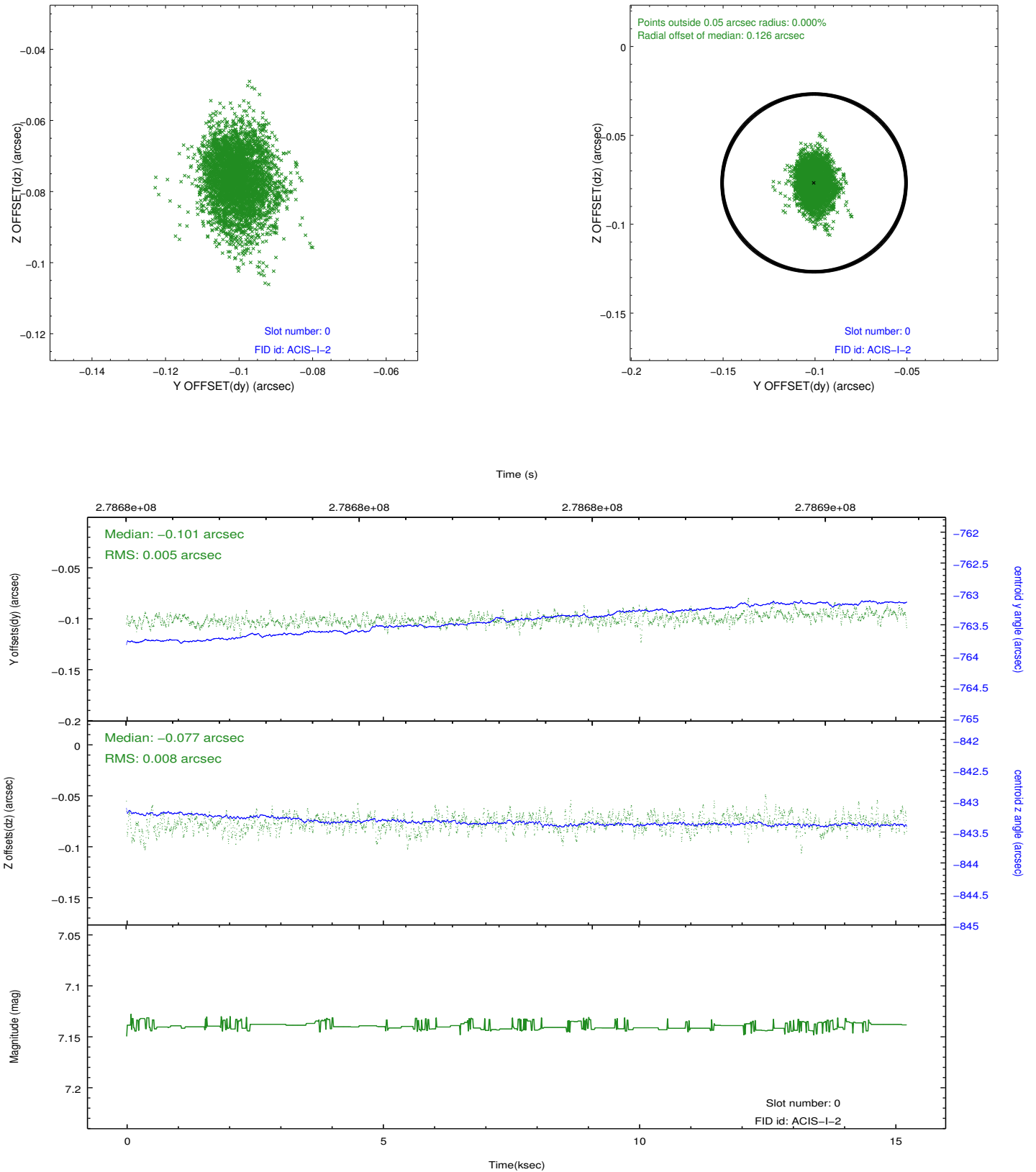


2.4.5 Slot 7

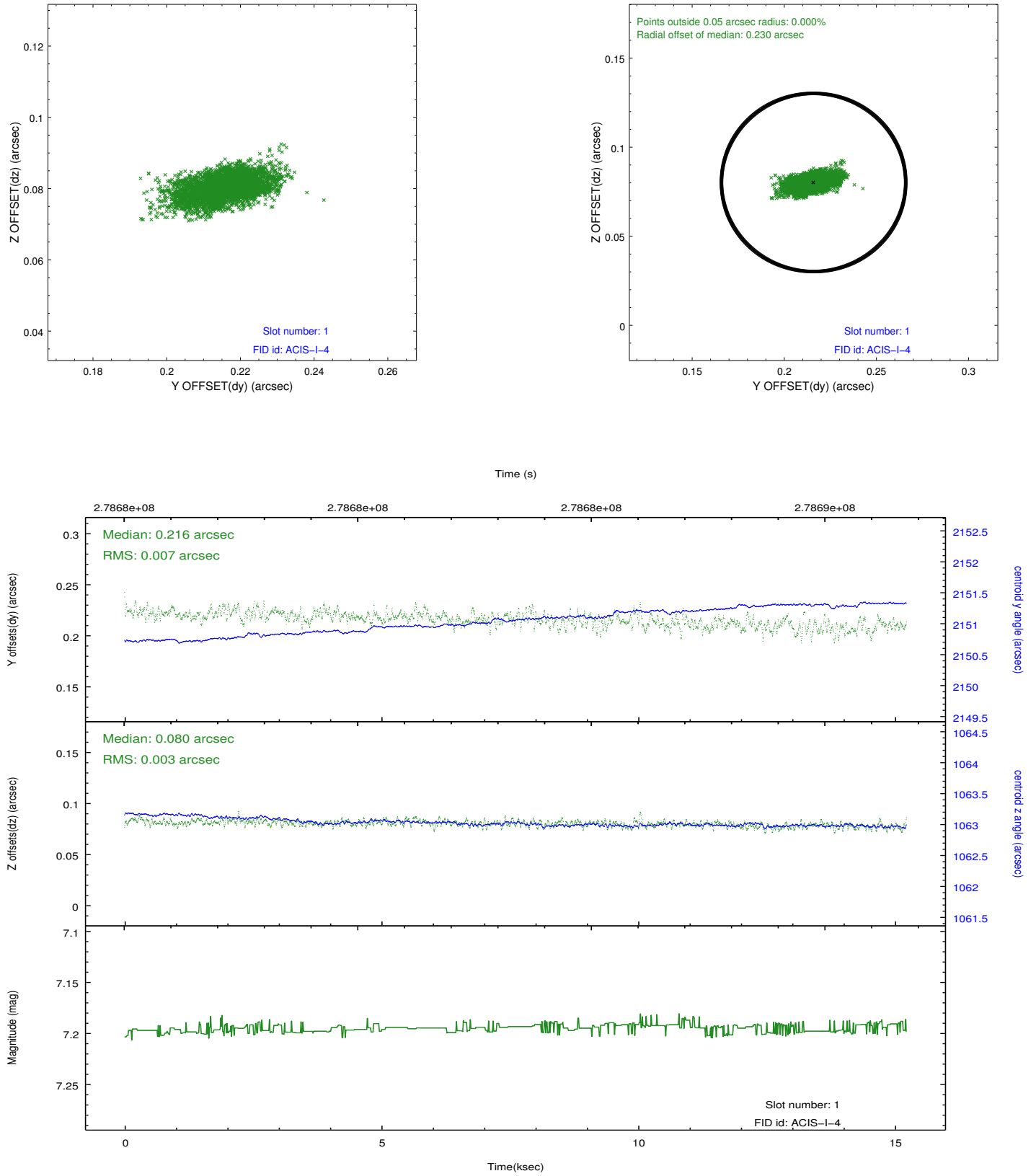


2.5 FID Slots

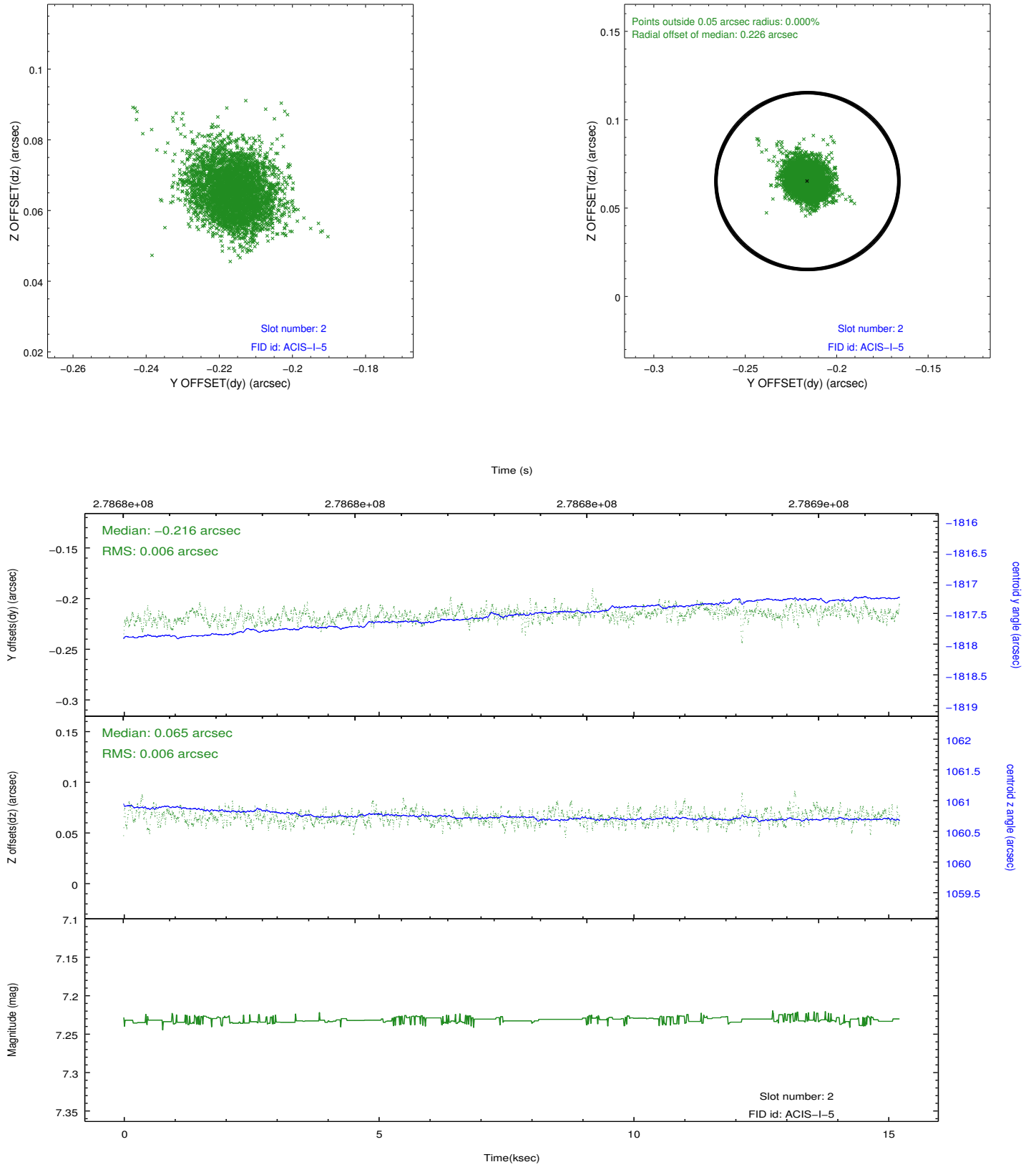
2.5.1 Slot 0



2.5.2 Slot 1



2.5.3 Slot 2



A Summary

A.1 Status

V&V Scientist	Jen Lauer
V&V Date (YYYY-MM-DD)	2012.04.12
V&V Edition	1
V&V Disposition and Status	OK
V&V Charge Time	14.2538001

A.2 Comments

Roll preference not met.