

V&V Reference Report

L2 ASCDS Version : 7.6.10

Observation 658 - L2 Version 001
Chandra X-Ray Center

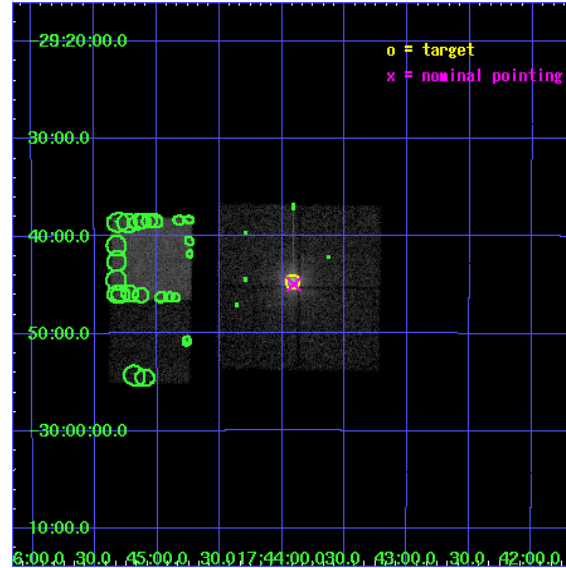
L2 Processing Date : Jun 6 2007

Contents

1	Front	2
2	OBI	3
2.1	OBI	3
2.1.1	Images	3
2.1.2	Bias	3
2.1.3	Parameters	4
2.1.4	Events	4
2.2	Compared Parameters	5
2.3	Aspect	6
2.4	Star Slots	9
2.4.1	Slot 3	9
2.4.2	Slot 4	10
2.4.3	Slot 5	11
2.4.4	Slot 6	12
2.4.5	Slot 7	13
2.5	FID Slots	14
2.5.1	Slot 0	14
2.5.2	Slot 1	15
2.5.3	Slot 2	16
3	Point Sources	17
A	Summary	18
A.1	Status	18
A.2	Comments	18

1 Front

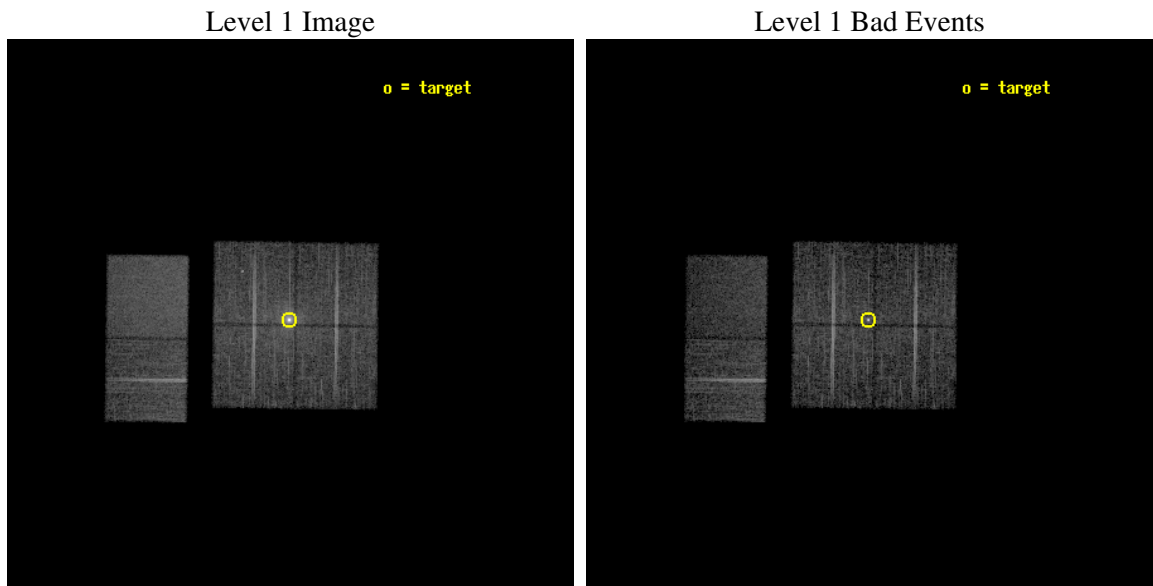
seq_num	400025
obs_id	658
title	AN X-RAY IMAGING SURVEY OF JETS FROM X-RAY BINARIES : ENERGETICS OF OUTFLOWS FROM NEUTRON STARS AND BLACK HOLES
observer	Prof. Rob Fender
object	1E 1740.7-2942
dtcycle	0
cycle	P
ra_targ	265.97853
dec_targ	-29.74521
ra_nom	265.9763645168
dec_nom	-29.749761190641
roll_nom	270.78929221713
revision	2
ontime	9353.6000087112
livetime	9235.1590933392
ontime0	9350.3590484709
ontime1	9347.1180882156
ontime2	9353.6000087112
ontime3	9353.6000087112
ontime6	9353.6000087112
ontime7	9353.6000087112
l2events	87521



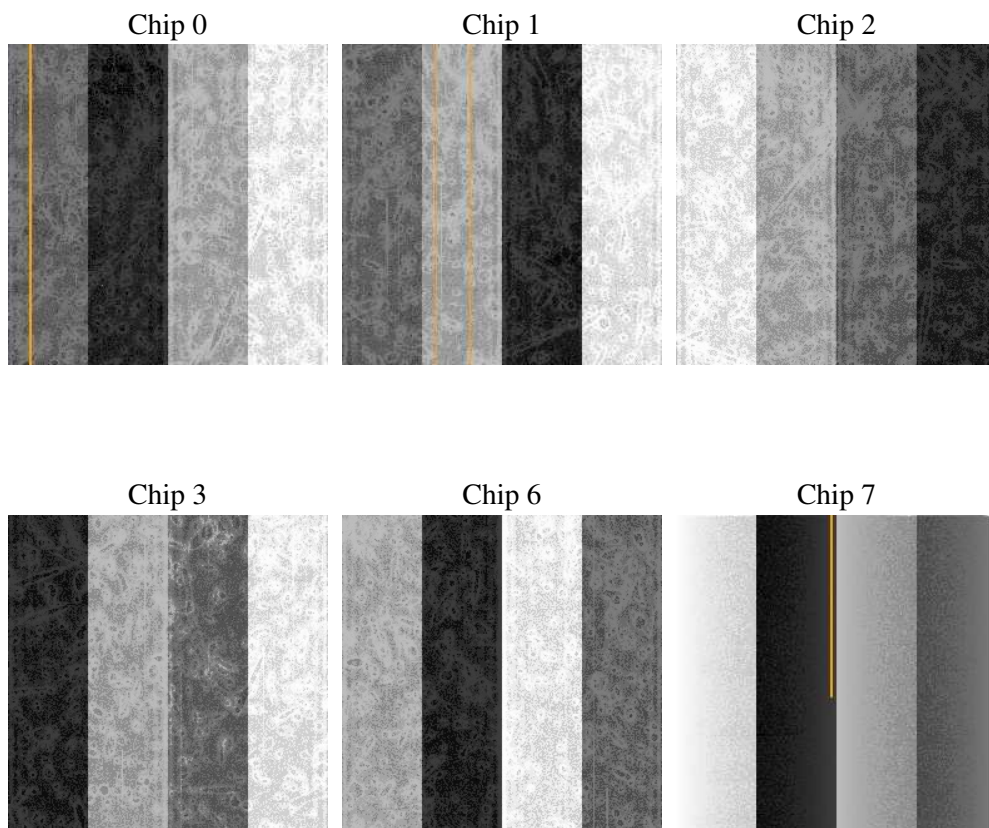
2 OBI

2.1 OBI

2.1.1 Images



2.1.2 Bias



2.1.3 Parameters

obi_num	0
ascdsver	7.6.10
caldbver	3.4.0
date	2007-06-06T12:47:16
revision	2

sched_exp_time	9600.000000
ontime	9353.6000087112
ontime0	9350.3590484709
ontime1	9347.1180882156
ontime2	9353.6000087112
ontime3	9353.6000087112
ontime6	9353.6000087112
ontime7	9353.6000087112
l1events	375051

2.1.4 Events

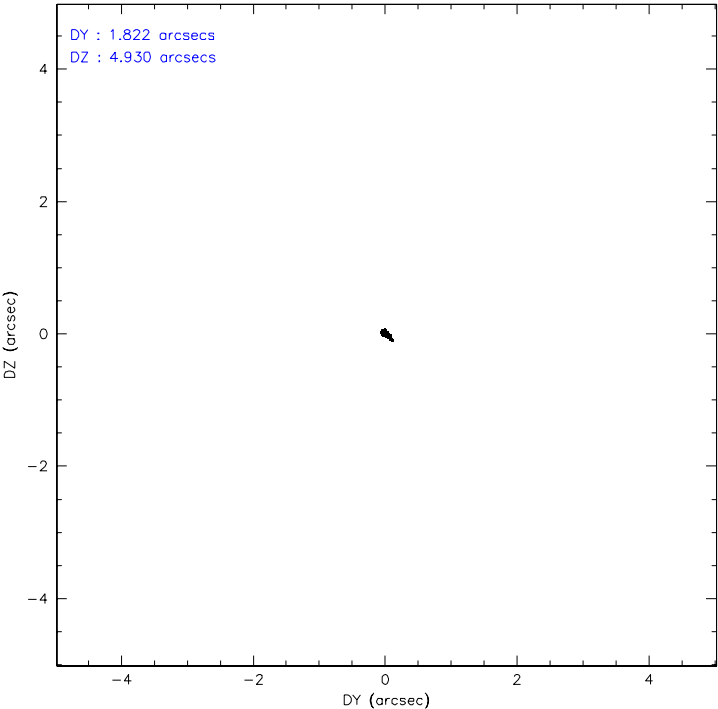
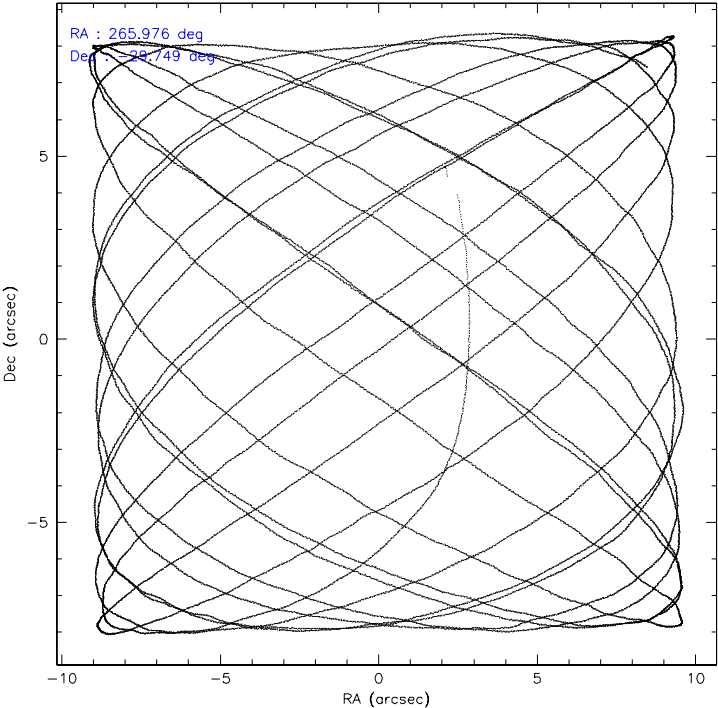
	ccd 0	ccd 1	ccd 2	ccd 3	ccd 6	ccd 7
level 1 events	53665	55470	59866	74206	59708	72136
rejected events	44041	43972	49783	51321	51953	39629
rejected %	82%	79%	83%	69%	87%	54%

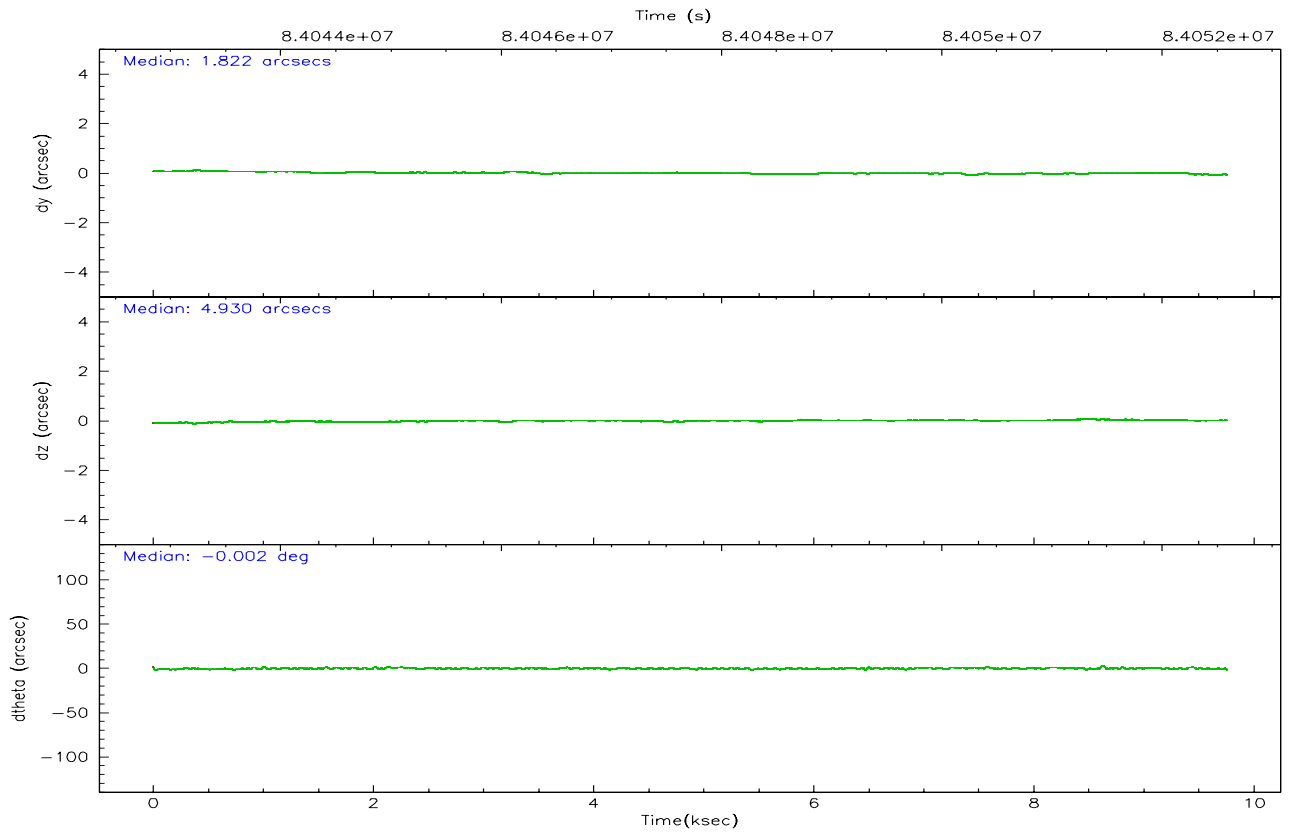
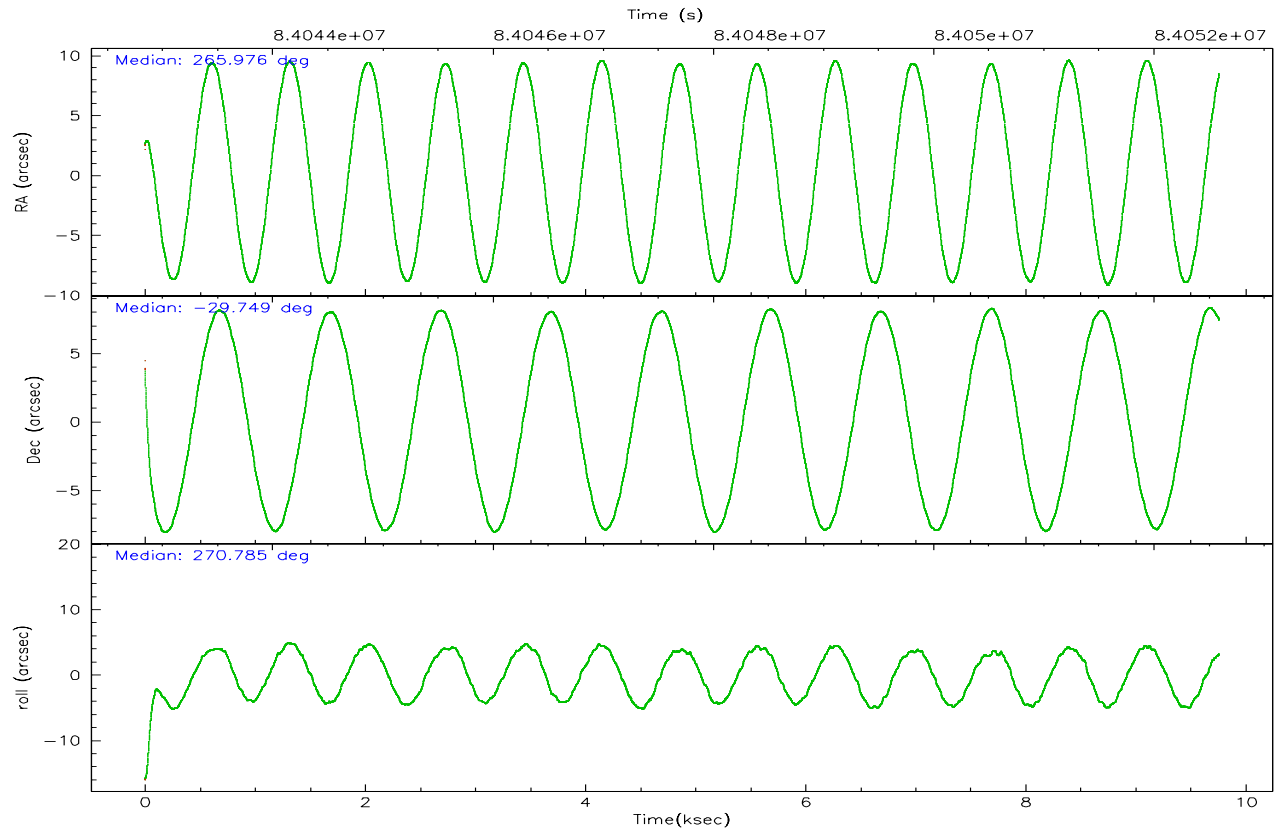
	ccd 0	ccd 1	ccd 2	ccd 3	ccd 6	ccd 7
grade 0 events	5034	6132	5317	13367	3639	3362
	9%	11%	8%	18%	6%	4%
grade 1 events	42	45	39	302	39	65
	0%	0%	0%	0%	0%	0%
grade 2 events	1745	1969	1835	3866	1401	6388
	3%	3%	3%	5%	2%	8%
grade 3 events	823	955	817	1410	719	2966
	1%	1%	1%	1%	1%	4%
grade 4 events	795	887	742	1409	717	2894
	1%	1%	1%	1%	1%	4%
grade 5 events	1964	2087	1829	2489	2364	6705
	3%	3%	3%	3%	3%	9%
grade 6 events	1237	1565	1381	2849	1287	16916
	2%	2%	2%	3%	2%	23%
grade 7 events	42025	41830	47906	48514	49542	32840
	78%	75%	80%	65%	82%	45%

2.2 Compared Parameters

Parameter	Planned	Actual	Parameter	Planned	Actual
Instrument	ACIS	ACIS	Obspar format version number	6	6
Detector	ACIS-012367	ACIS-012367	Obspar file type	PREDICTED	ACTUAL
Grating	NONE	NONE	Obspar update status	NONE	UPDATED
Data mode	VFAINT	VFAINT	Number of optional ACIS chips dropped	0	0
Observation mode	POINTING	POINTING	On-chip summing requested	N	N
Pointing RA	265.960266	265.9763645167982	Subarray requested	NONE	NONE
Pointing Dec	-29.726033	-29.7497611906409	Alternating exposures requested	N	N
Pointing Roll	270.572632	270.789292217127	Primary exposure time	3.200000	3.2
SIM focus pos (mm)	-0.782348	-0.7809083437167272			
SIM defocus (mm)	0	0.001439871863259334			
SIM translation stage pos (mm)	-233.592463	-233.5874344608287			
SIM translation stage offset (mm)	0	-0.005018542100998502			
Observation start time	84042997.184000	84041972.509902			
Observation start date	2000-08-30T17:15:33	2000-08-30T16:59:32			
Observation end time	84052597.184000	84052802.147808			
Observation end date	2000-08-30T19:55:33	2000-08-30T20:00:02			
Read mode	TIMED	TIMED			

2.3 Aspect



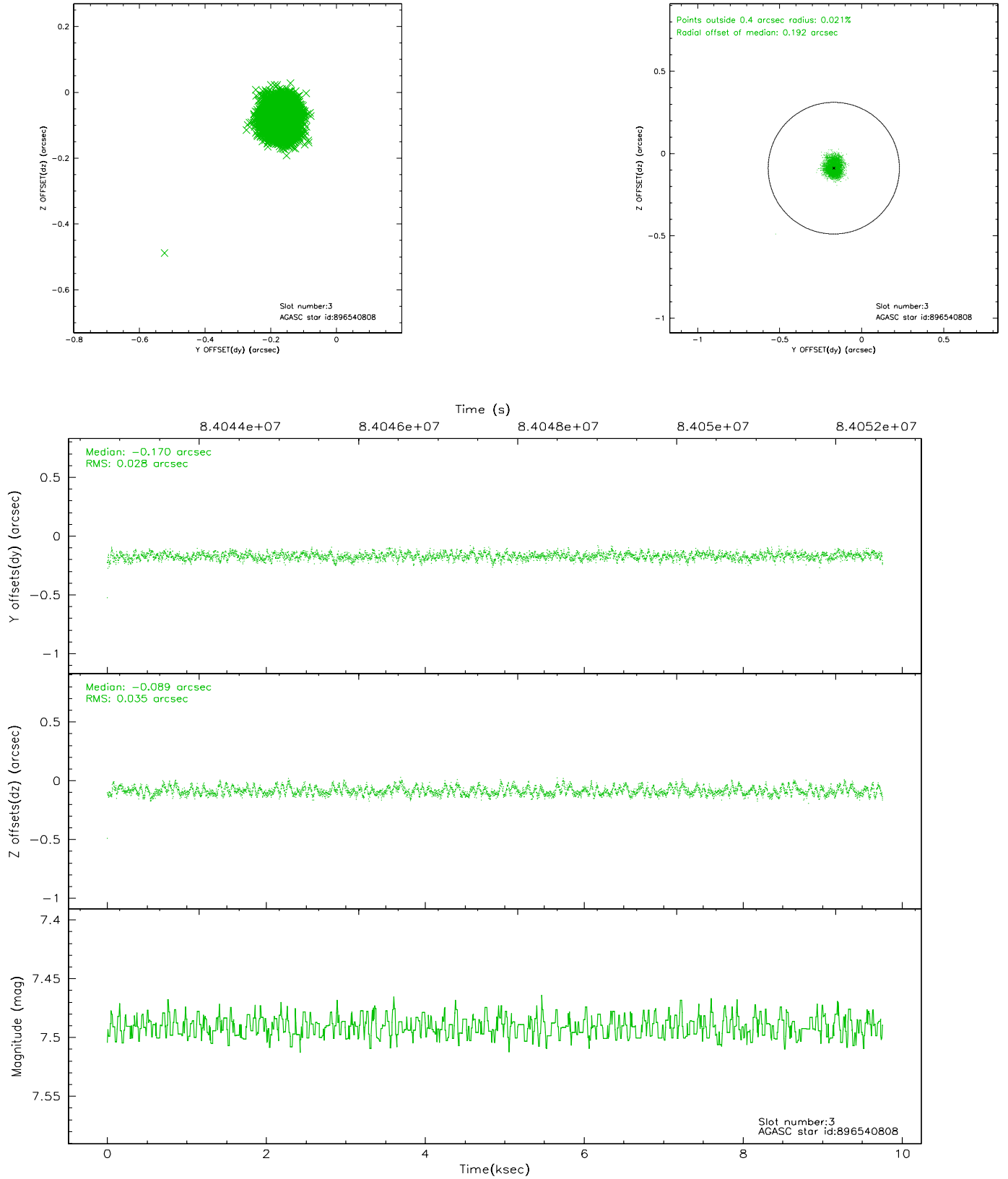


Slot Statistics

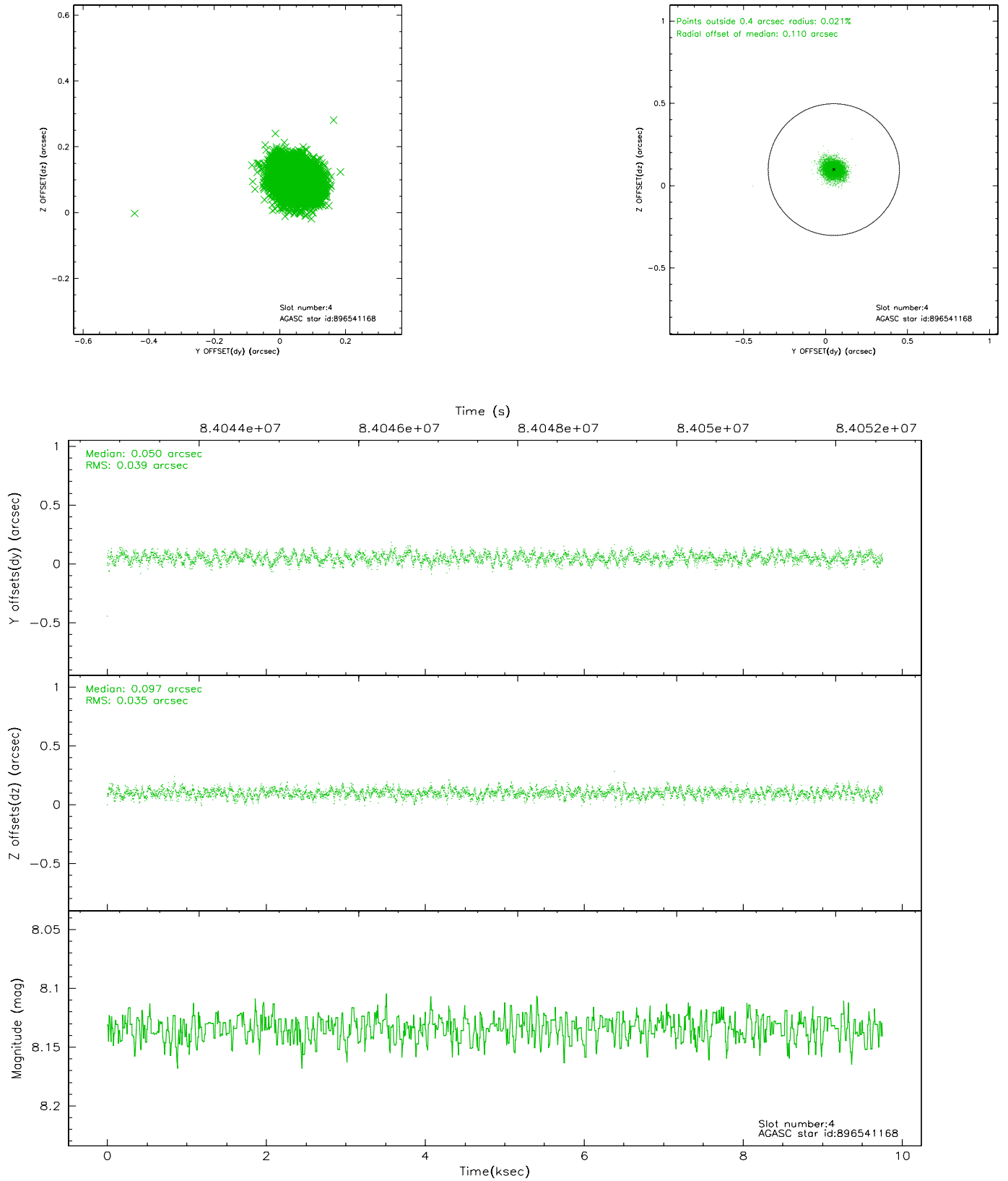
slot	status	id	mag	n_pts	med_dy	med_dz	dr1	dr2	ra	dec	mean_y	mean_z
0	FID	ACIS-I-2	7.15	2381	-0.030	-0.013	0.009	0.016	0.000000	0.000000	-756.21	-834.64
1	FID	ACIS-I-4	7.19	2380	-0.055	0.029	0.005	0.009	0.000000	0.000000	2157.58	1071.30
2	FID	ACIS-I-5	7.23	2380	-0.016	0.052	0.009	0.015	0.000000	0.000000	-1809.31	1069.80
3	GUIDE	896540808	7.49	4759	-0.170	-0.089	0.047	0.076	265.985401	-29.308604	-1500.90	93.91
4	GUIDE	896541168	8.13	4761	0.050	0.097	0.056	0.087	266.319970	-29.850801	462.93	1118.91
5	GUIDE	896538920	8.90	4758	-0.108	0.056	0.059	0.097	266.278728	-29.143592	-2084.26	1022.59
6	GUIDE	966918832	8.71	4758	0.174	0.044	0.057	0.092	266.278876	-30.183148	1657.63	975.60
7	GUIDE	966787648	8.89	4758	0.052	-0.111	0.070	0.113	265.297931	-30.077843	1253.53	-2075.58

2.4 Star Slots

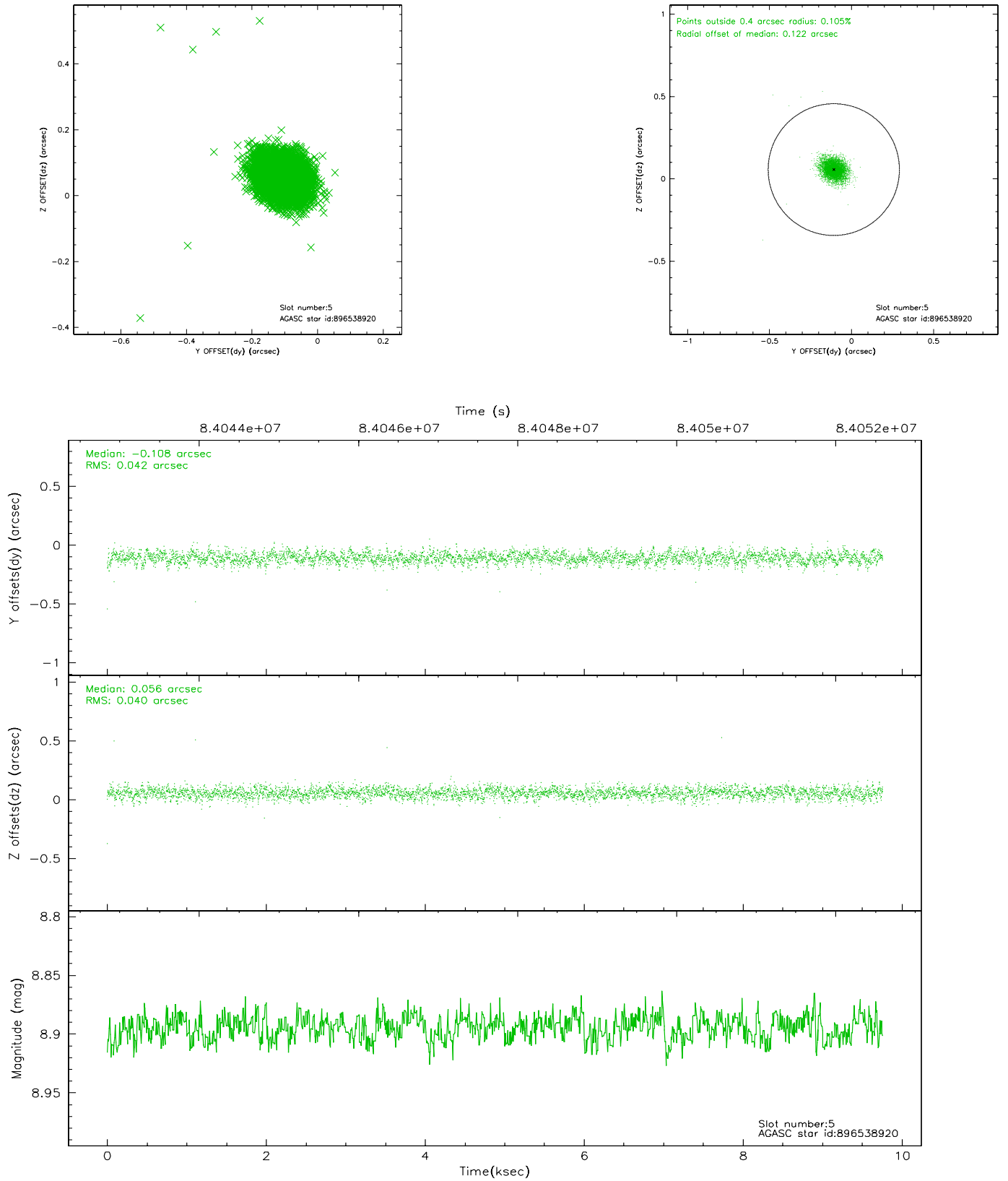
2.4.1 Slot 3



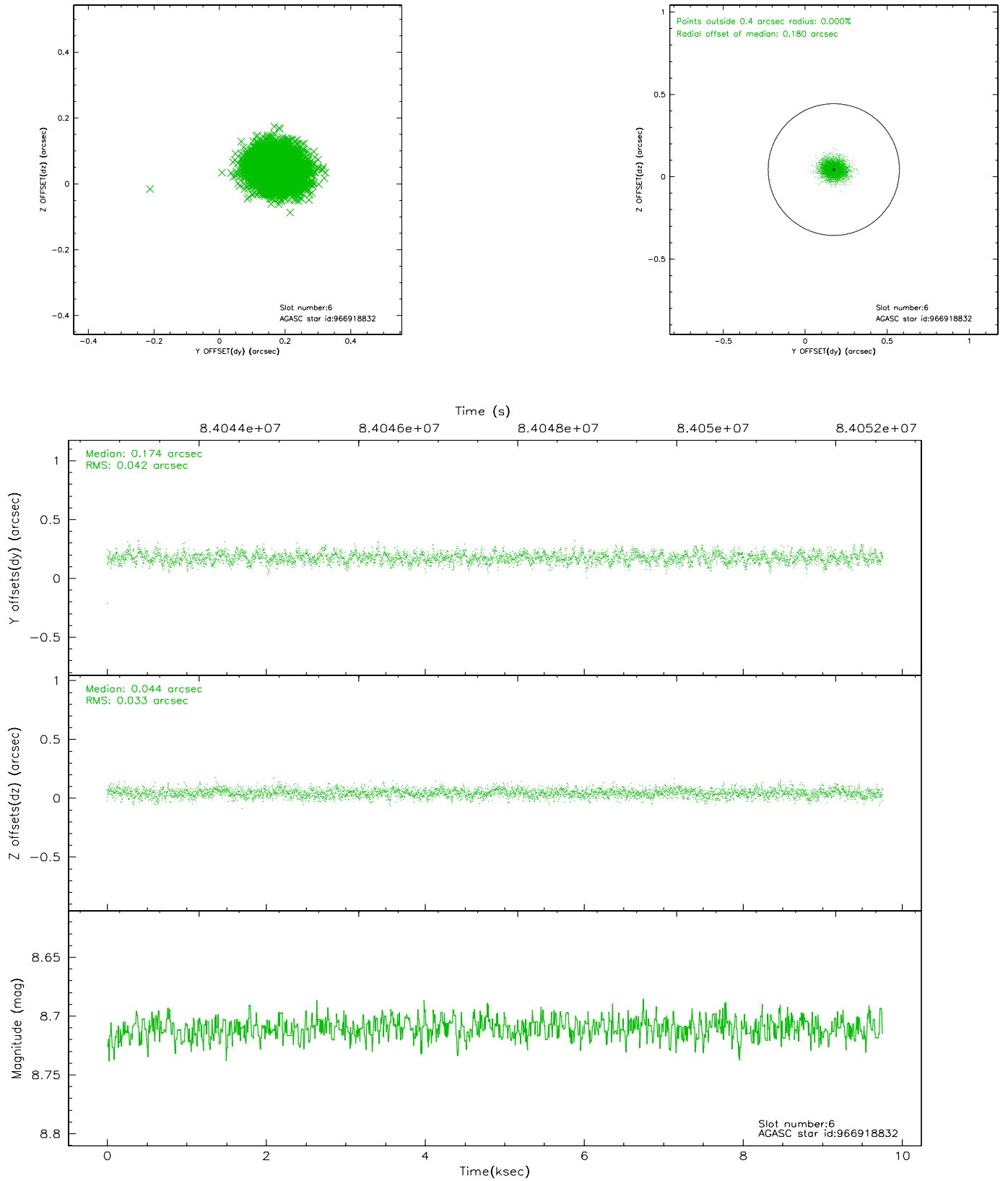
2.4.2 Slot 4



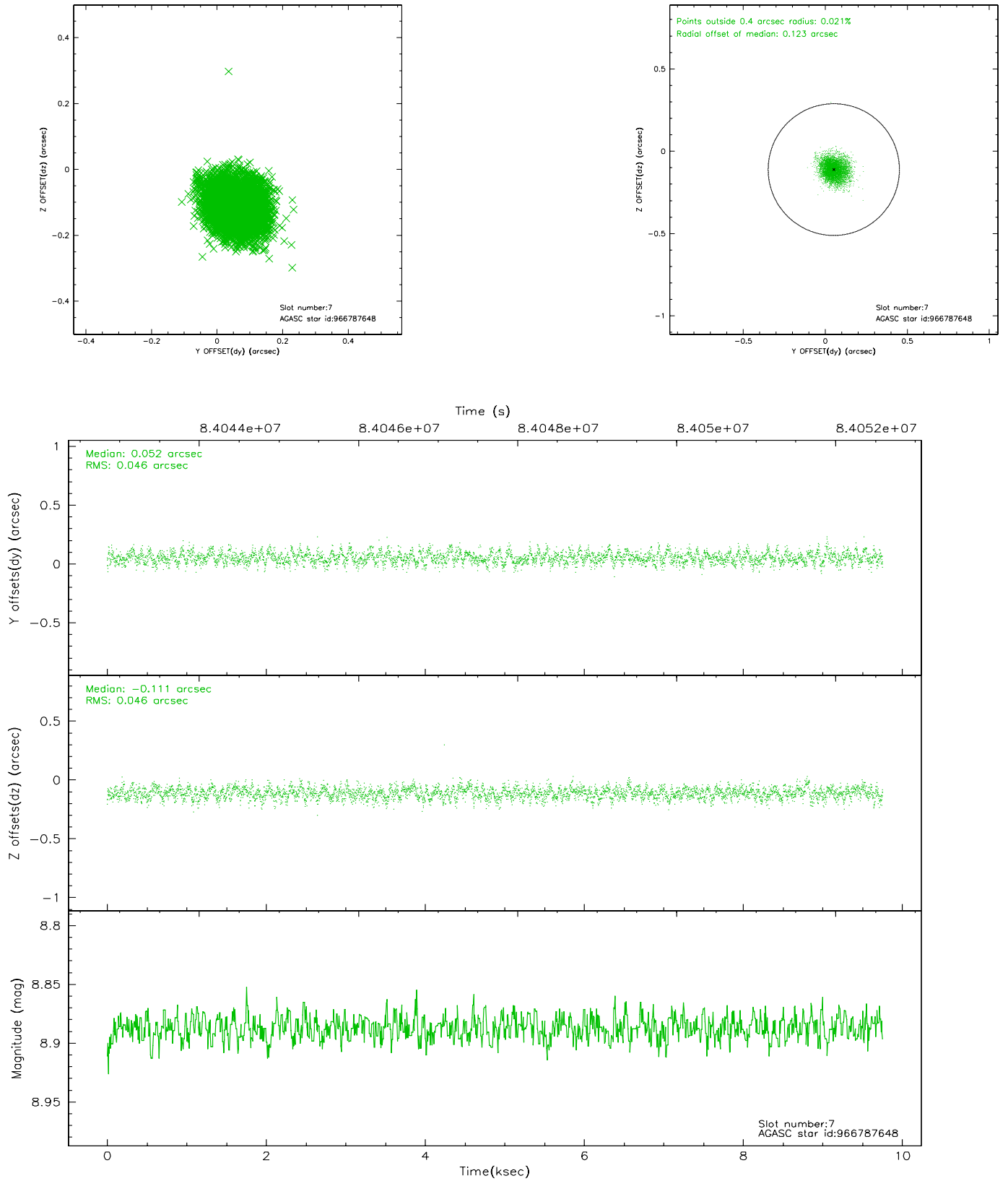
2.4.3 Slot 5



2.4.4 Slot 6

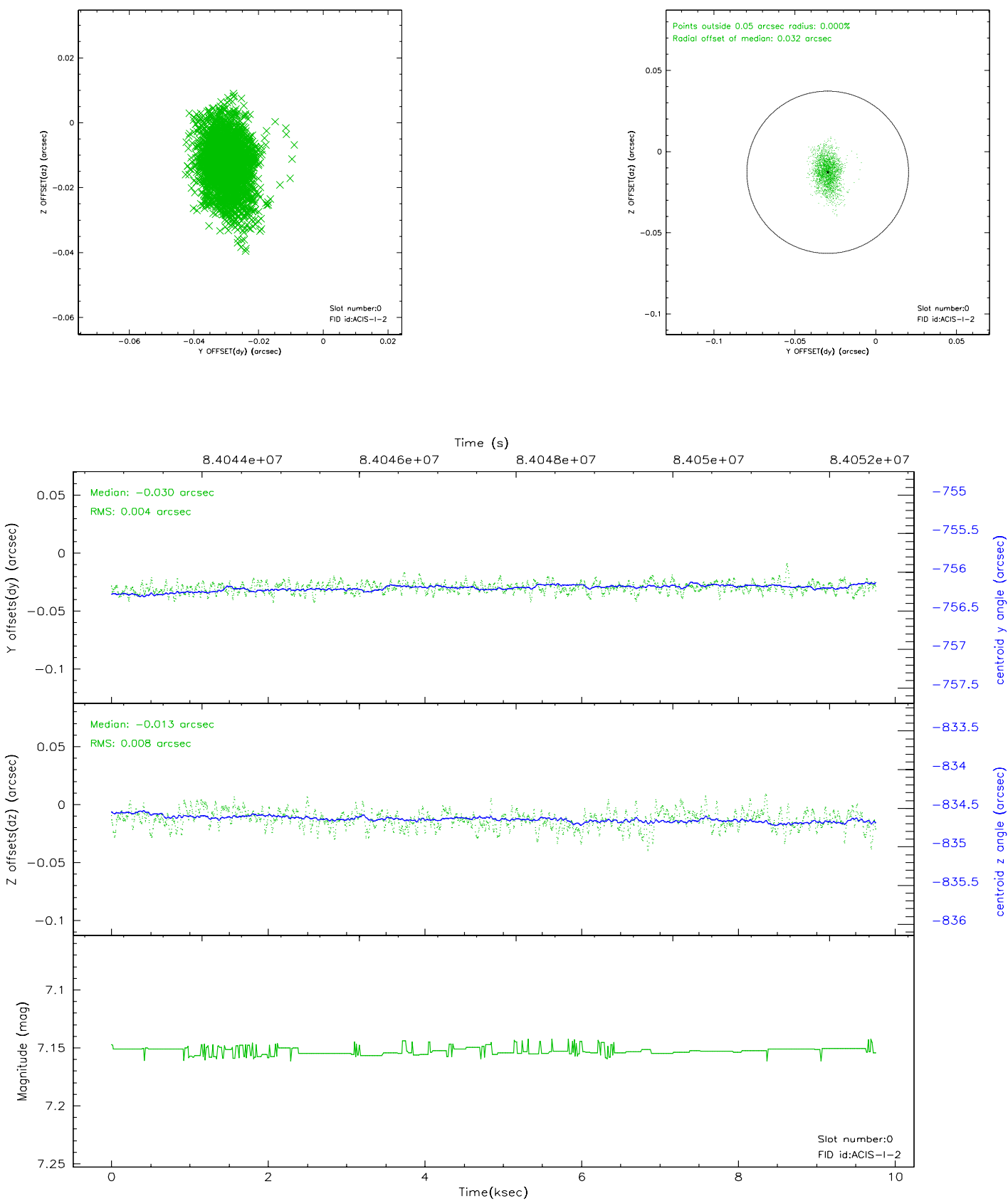


2.4.5 Slot 7

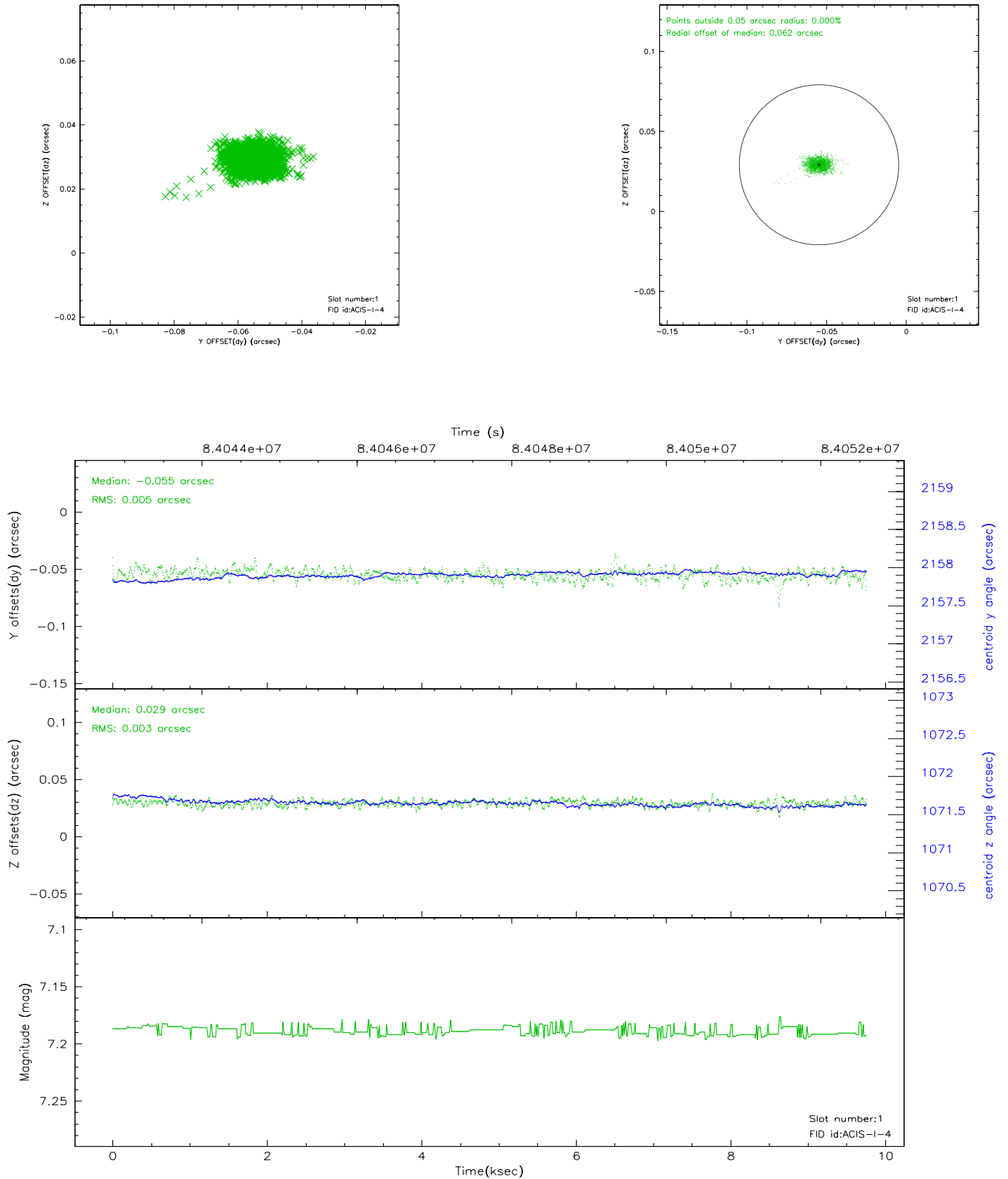


2.5 FID Slots

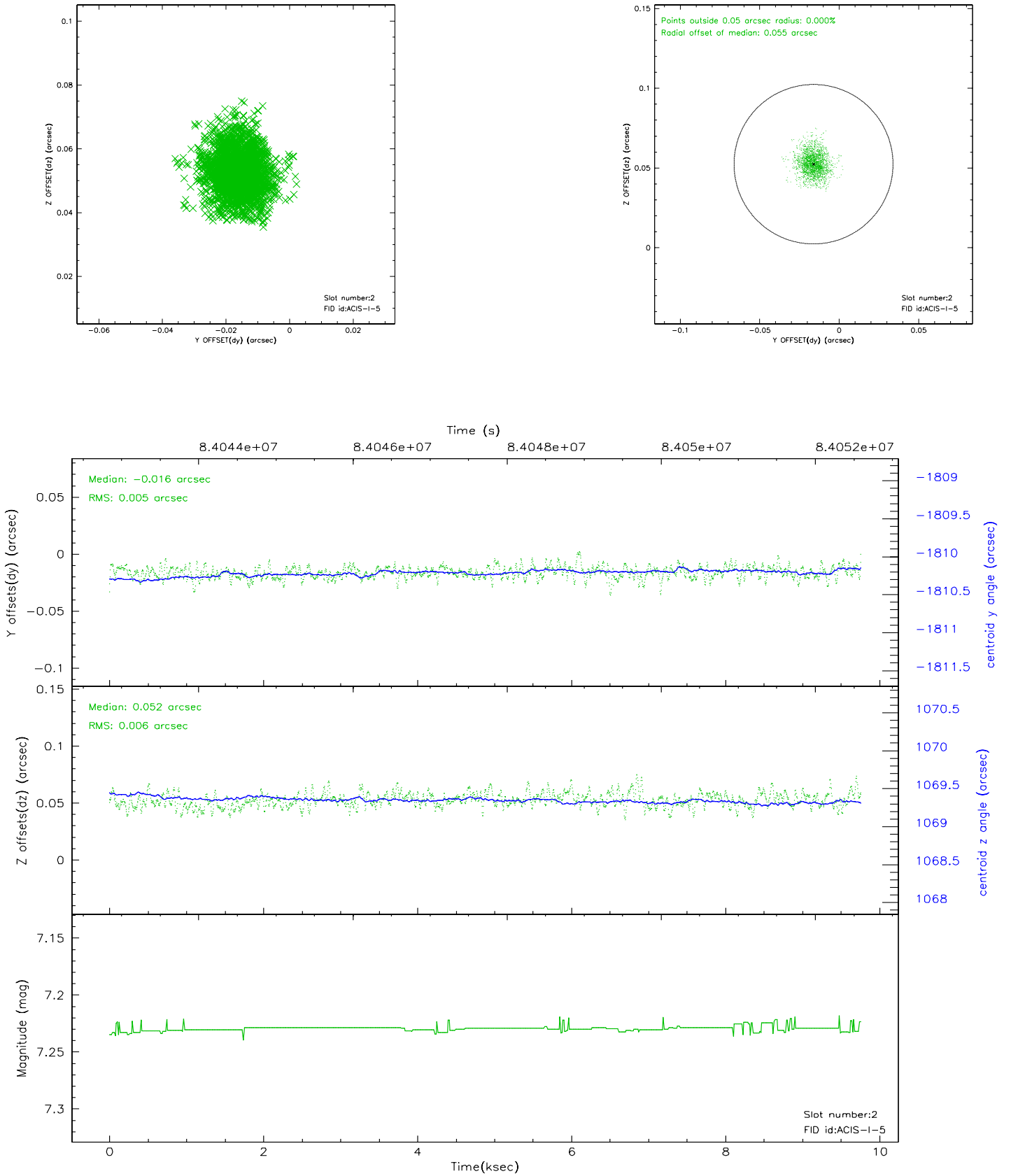
2.5.1 Slot 0



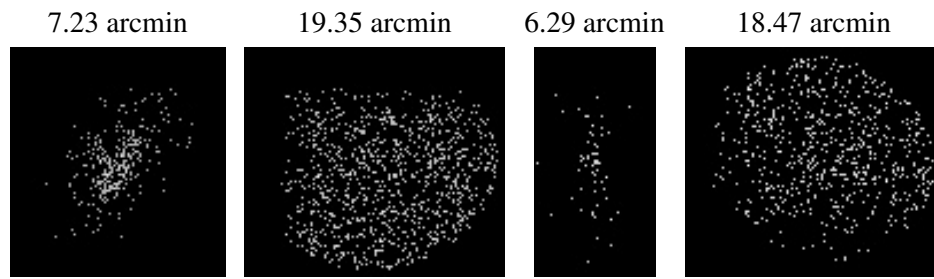
2.5.2 Slot 1



2.5.3 Slot 2



3 Point Sources



A Summary

A.1 Status

V&V Scientist	Jen Lauer
V&V Date (YYYY-MM-DD)	2007.06.06
V&V Edition	1
V&V Disposition and Status	OK
V&V Charge Time	9.356

A.2 Comments