

# V&V Reference Report

## L2 ASCDS Version : 8.5.1.1

Observation 6318 - L2 Version 4  
Chandra X-Ray Center

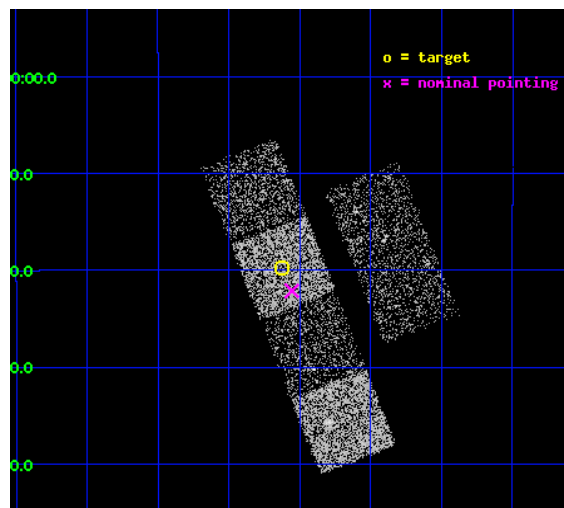
L2 Processing Date : Mar 7 2013

## Contents

<b>1</b>	<b>Front</b>	<b>2</b>
<b>2</b>	<b>OBI</b>	<b>3</b>
2.1	OBI . . . . .	3
2.1.1	Images . . . . .	3
2.1.2	Bias . . . . .	3
2.1.3	Parameters . . . . .	4
2.1.4	Events . . . . .	4
2.2	Compared Parameters . . . . .	5
2.3	Aspect . . . . .	6
2.4	Star Slots . . . . .	9
2.4.1	Slot 3 . . . . .	9
2.4.2	Slot 4 . . . . .	10
2.4.3	Slot 5 . . . . .	11
2.4.4	Slot 6 . . . . .	12
2.4.5	Slot 7 . . . . .	13
2.5	FID Slots . . . . .	14
2.5.1	Slot 0 . . . . .	14
2.5.2	Slot 1 . . . . .	15
2.5.3	Slot 2 . . . . .	16
<b>A</b>	<b>Summary</b>	<b>17</b>
A.1	Status . . . . .	17
A.2	Comments . . . . .	17

# 1 Front

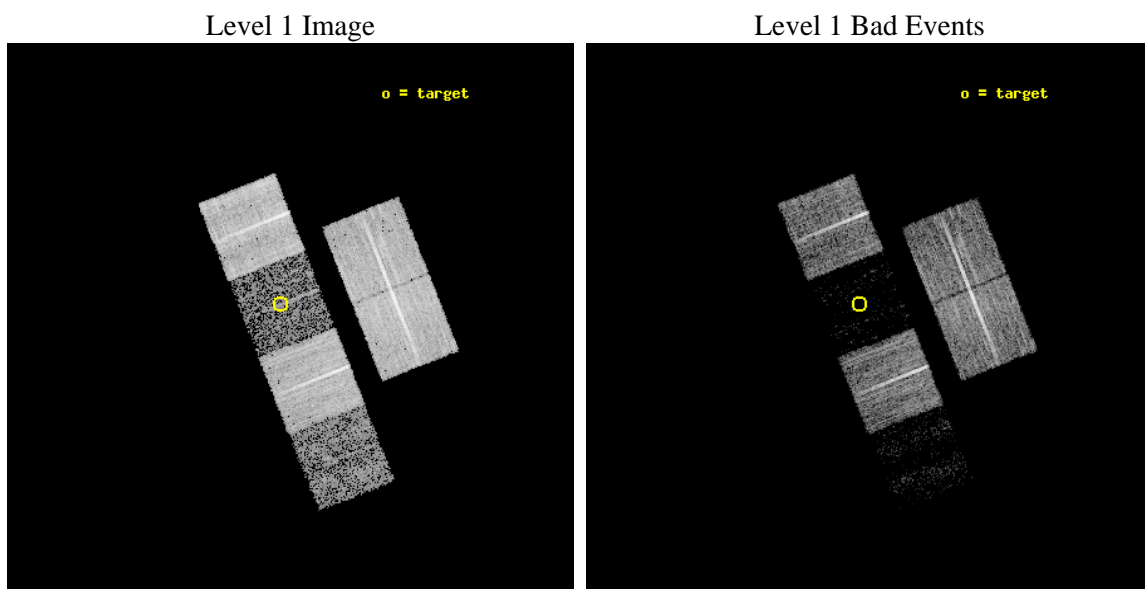
seq_num	100054	Sequence number
obs_id	6318	Observation id
title	Comet 9P/Tempel 1 During the Deep Impact Encounter	Proposal title
observer	Dr. Carey Lisse	Principal investigator
object	9P/Tempel 1	Source name
dtcycle	0	&#160
cycle	P	events from which exps? Prim/Second/Both
ra_targ	203.031484	Observer's specified target RA [deg]
dec_targ	-8.329461	Observer's specified target Dec [deg]
ra_nom	203.01385570017	Nominal RA [deg]
dec_nom	-8.3686579631289	Nominal Dec [deg]
roll_nom	248.39371545105	Nominal Roll [deg]
revision	4	Processing version of data
ontime	10185.599962056	Sum of GTIs [s]
livetime	10056.623762304	Livetime [s]
ontime2	10185.599962056	Sum of GTIs [s]
ontime3	10185.599962056	Sum of GTIs [s]
ontime5	10185.599962056	Sum of GTIs [s]
ontime6	10185.599962056	Sum of GTIs [s]
ontime7	10185.599962056	Sum of GTIs [s]
ontime8	10185.599962056	Sum of GTIs [s]
l2events	14331	Number of level 2 events



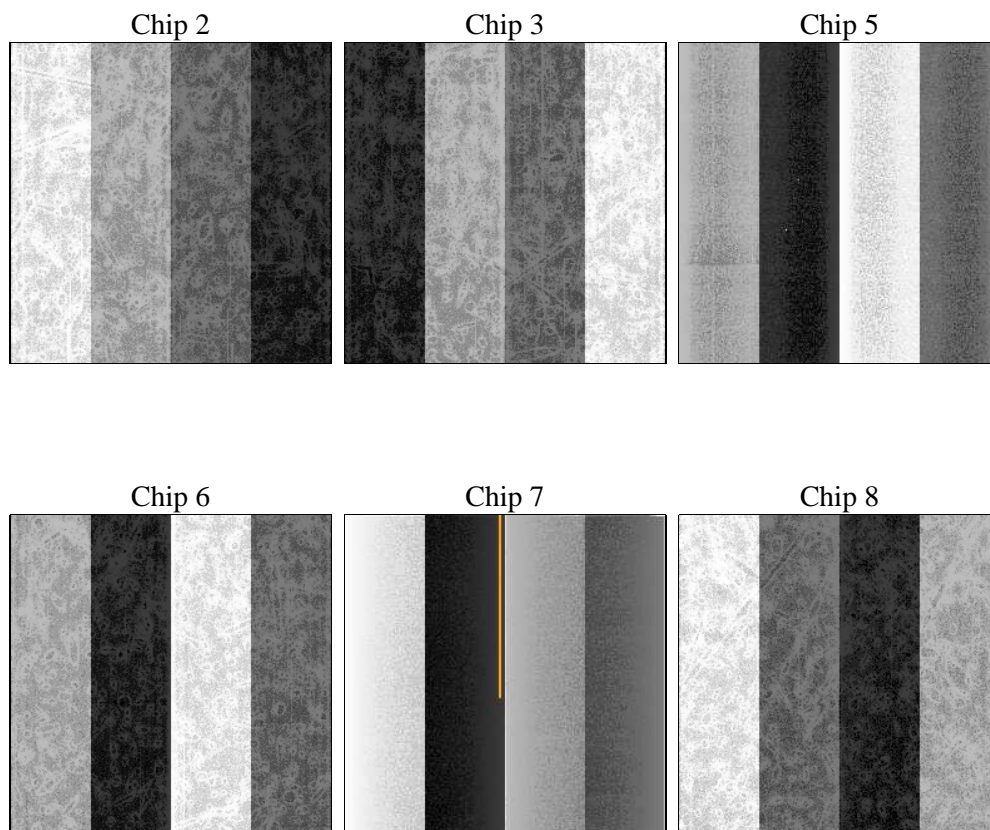
## 2 OBI

### 2.1 OBI

#### 2.1.1 Images



#### 2.1.2 Bias



### 2.1.3 Parameters

obi_num	0	Obi number	sched_exp_time	10000.000000	[s] Scheduled observation exposure time
ascdsver	8.5.1.1	Processing system revision	ontime	10185.599962056	Sum of GTIs [s]
caldsver	4.5.6	&#160	ontime2	10185.599962056	Sum of GTIs [s]
date	2013-03-07T08:22:50	Date and time of file creation	ontime3	10185.599962056	Sum of GTIs [s]
revision	4	Processing version of data	ontime5	10185.599962056	Sum of GTIs [s]
			ontime6	10185.599962056	Sum of GTIs [s]
			ontime7	10185.599962056	Sum of GTIs [s]
			ontime8	10185.599962056	Sum of GTIs [s]
			l1events	206483	Number of level 1 events

### 2.1.4 Events

	ccd 2	ccd 3	ccd 5	ccd 6	ccd 7	ccd 8
level 1 events	51596	44211	7944	43905	6198	52629
rejected events	49474	42571	2776	41995	1413	40206
rejected %	95%	96%	34%	95%	22%	76%

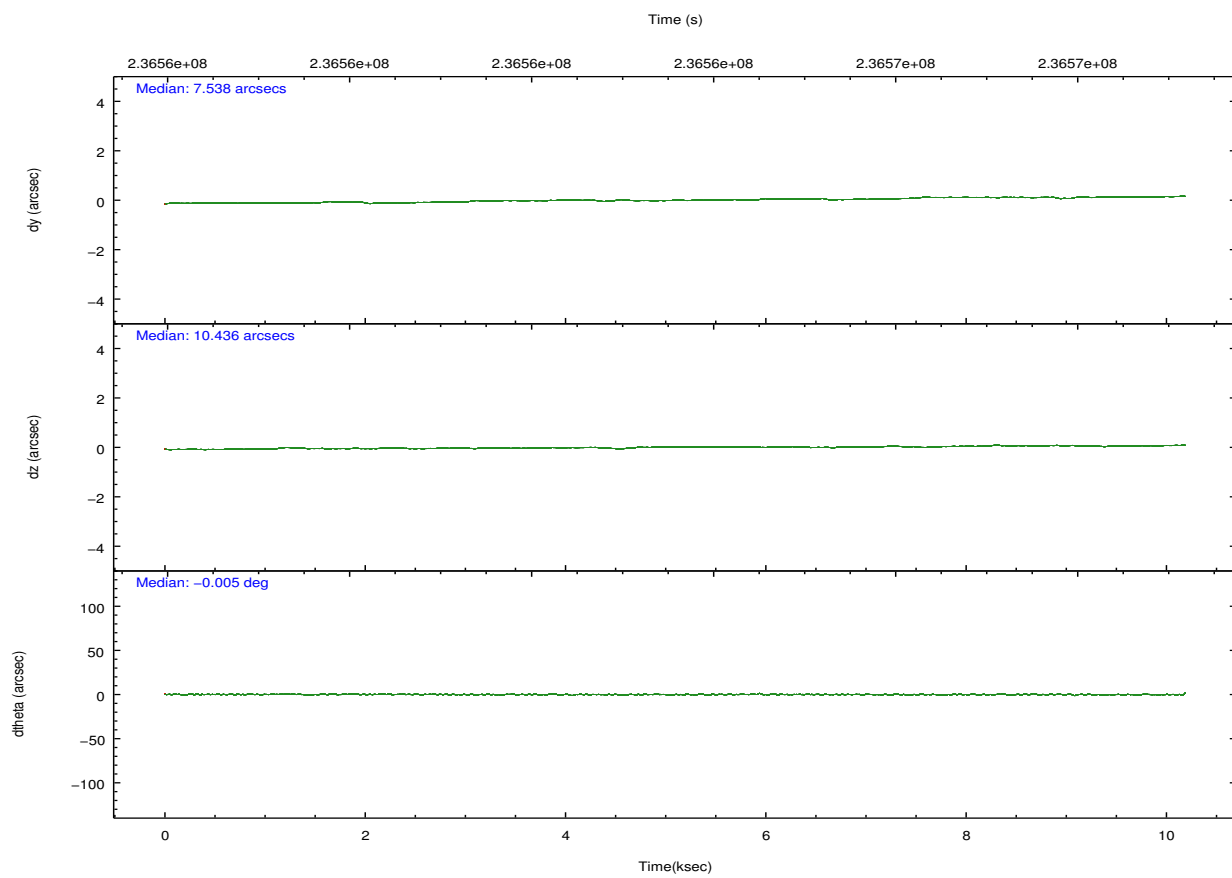
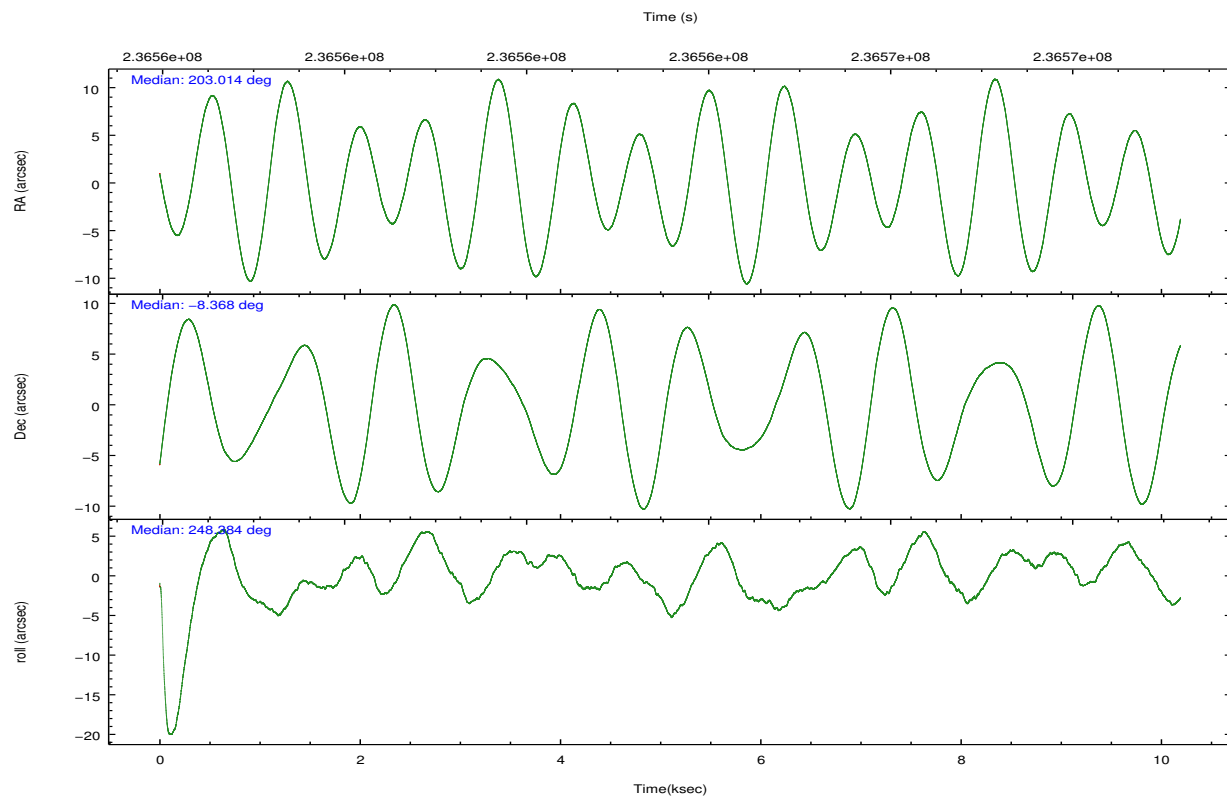
	ccd 2	ccd 3	ccd 5	ccd 6	ccd 7	ccd 8
grade 0 events	914	746	1251	941	1337	3289
	1%	1%	15%	2%	21%	6%
grade 1 events	13	17	57	7	21	31
	0%	0%	0%	0%	0%	0%
grade 2 events	516	206	2124	370	1584	3020
	1%	0%	26%	0%	25%	5%
grade 3 events	265	290	675	271	717	1314
	0%	0%	8%	0%	11%	2%
grade 4 events	275	249	621	250	695	1211
	0%	0%	7%	0%	11%	2%
grade 5 events	68	44	476	23	202	275
	0%	0%	5%	0%	3%	0%
grade 6 events	207	177	590	111	531	3831
	0%	0%	7%	0%	8%	7%
grade 7 events	49338	42482	2150	41932	1111	39658
	95%	96%	27%	95%	17%	75%



## 2.2 Compared Parameters

Parameter	Planned	Actual	Parameter	Planned	Actual
Instrument	ACIS	ACIS	Obspar format version number	7	7
Detector	ACIS-235678	ACIS-235678	Obspar file type	PREDICTED	ACTUAL
Grating	NONE	NONE	Obspar update status	NONE	UPDATED
Data mode	VFAINT	VFAINT	Number of optional ACIS chips dropped	0	0
Observation mode	POINTING	POINTING	On-chip summing requested	N	N
[deg] Pointing RA	203.009503	203.0138557001747	Subarray requested	NONE	NONE
[deg] Pointing Dec	-8.341779	-8.368657963128896	Alternating exposures requested	N	N
[deg] Pointing Roll	248.236428	248.3937154510476	[s] Primary exposure time	0.000000	3.2
[mm] SIM focus pos	-0.684267	-0.6828225247311905			
[mm] SIM defocus	0	0.001444936568705701			
[mm] SIM translation stage pos	-190.132523	-190.1400660498719			
[mm] SIM translation stage offset	0	0.00754346686406393			
[s] Observation start time (MET)	236558670.184000	236558294.53424			
Observation start date	2005-06-30T22:43:26	2005-06-30T22:38:14			
[s] Observation end time (MET)	236568670.184000	236569186.18473			
Observation end date	2005-07-01T01:30:06	2005-07-01T01:39:46			
Read mode	TIMED	TIMED			

## 2.3 Aspect

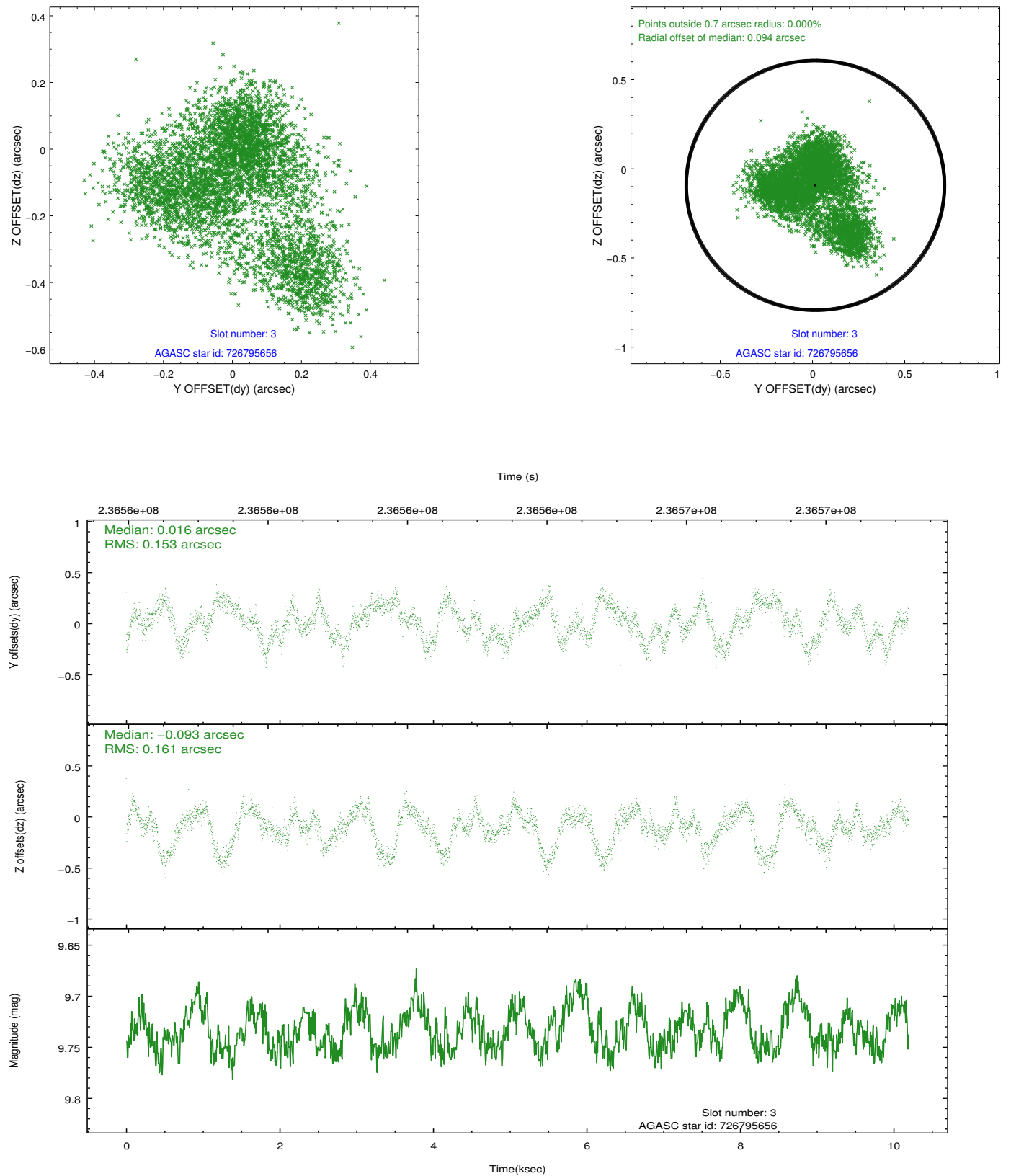


### Slot Statistics

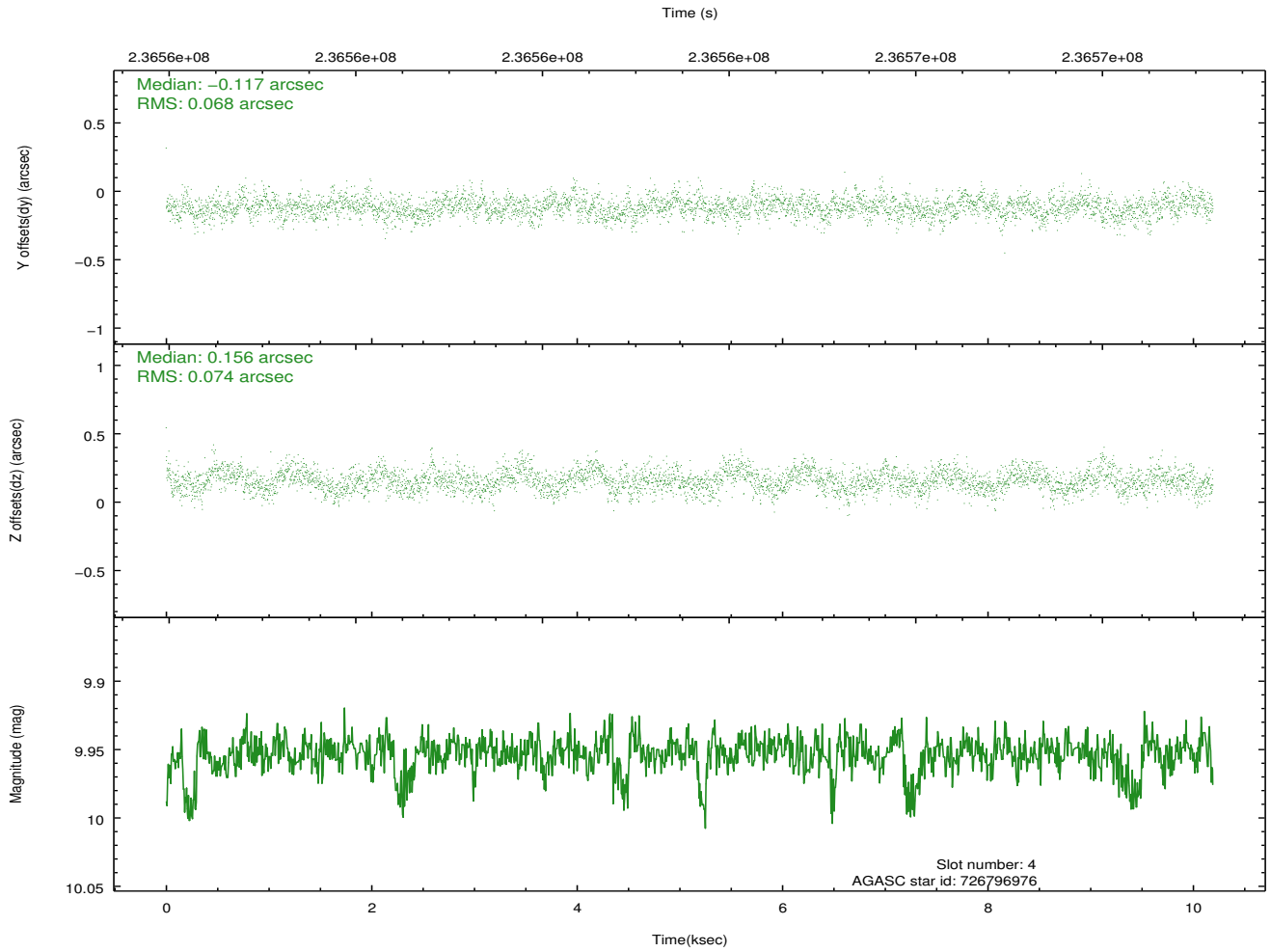
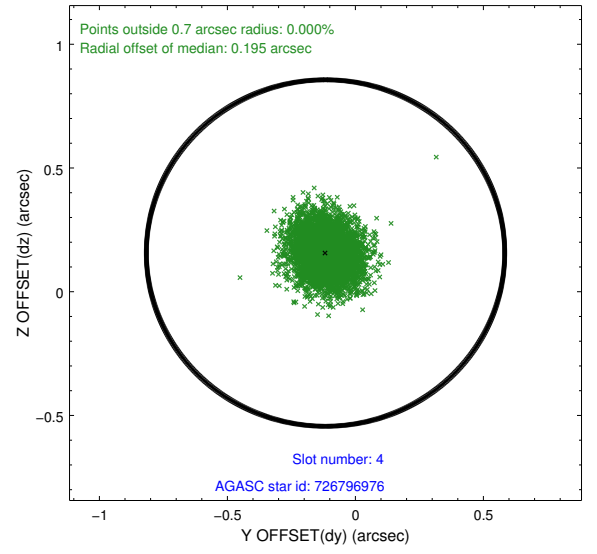
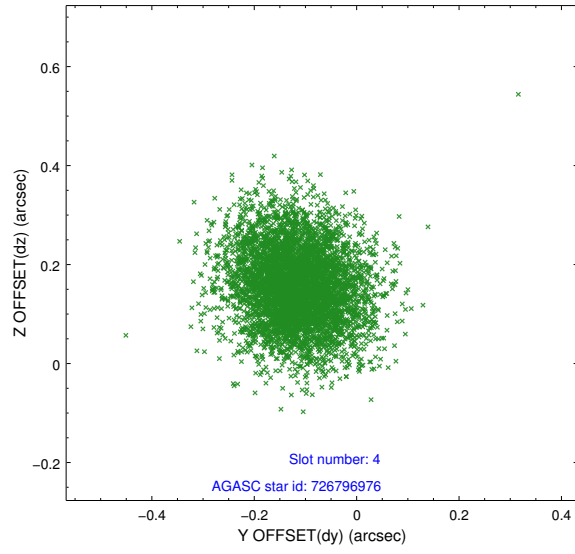
slot	status	id	mag	n_pts	med_dy	med_dz	dr1	dr2	ra	dec	mean_y	mean_z
0	FID	ACIS-S-2	7.10	2487	-0.046	-0.012	0.006	0.010	0.000000	0.000000	-760.31	-1731.72
1	FID	ACIS-S-4	7.20	2486	0.094	0.025	0.007	0.012	0.000000	0.000000	2152.82	176.33
2	FID	ACIS-S-5	7.23	2487	-0.080	-0.005	0.008	0.014	0.000000	0.000000	-1812.57	170.47
3	GUIDE	726795656	9.73	4901	0.016	-0.093	0.236	0.387	202.576235	-8.591995	1409.88	-1097.74
4	GUIDE	726796976	9.95	4966	-0.117	0.156	0.107	0.176	203.076886	-8.047529	-1072.17	-169.73
5	GUIDE	726797168	9.23	4966	0.110	0.146	0.097	0.159	202.692279	-8.774007	1864.46	-470.49
6	GUIDE	726797936	8.88	4972	0.100	-0.163	0.103	0.159	202.337774	-8.785484	2372.73	-1626.32
7	GUIDE	726799728	8.98	4970	-0.099	-0.029	0.094	0.149	203.680019	-8.342027	-881.35	2217.57

## 2.4 Star Slots

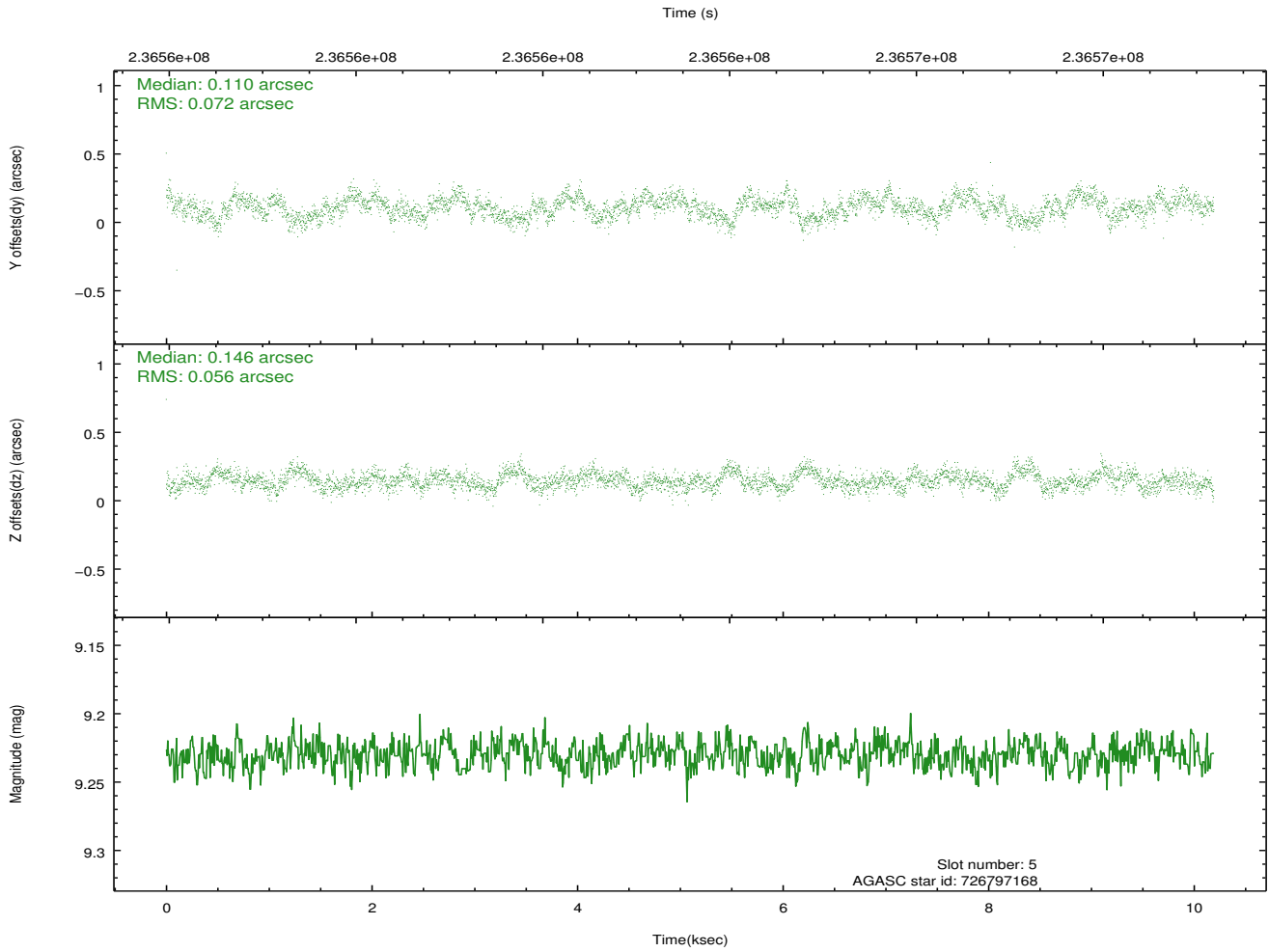
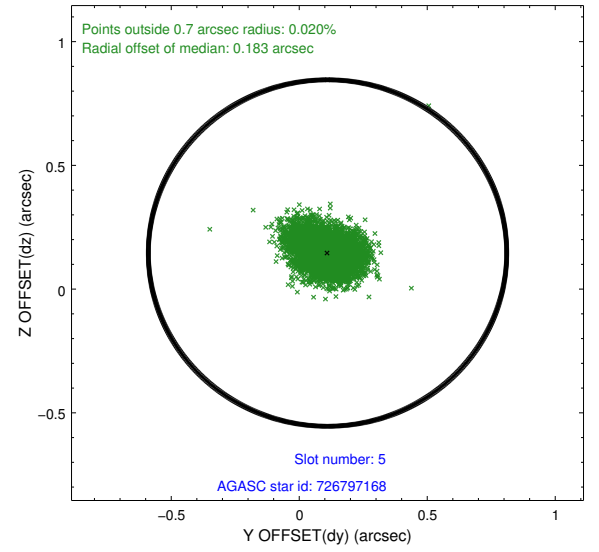
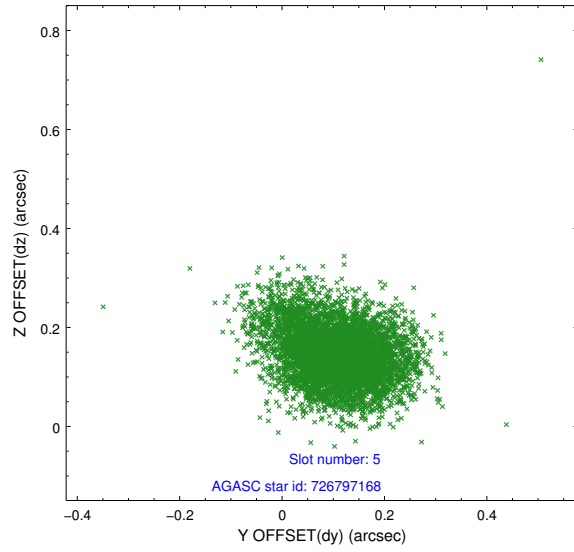
### 2.4.1 Slot 3



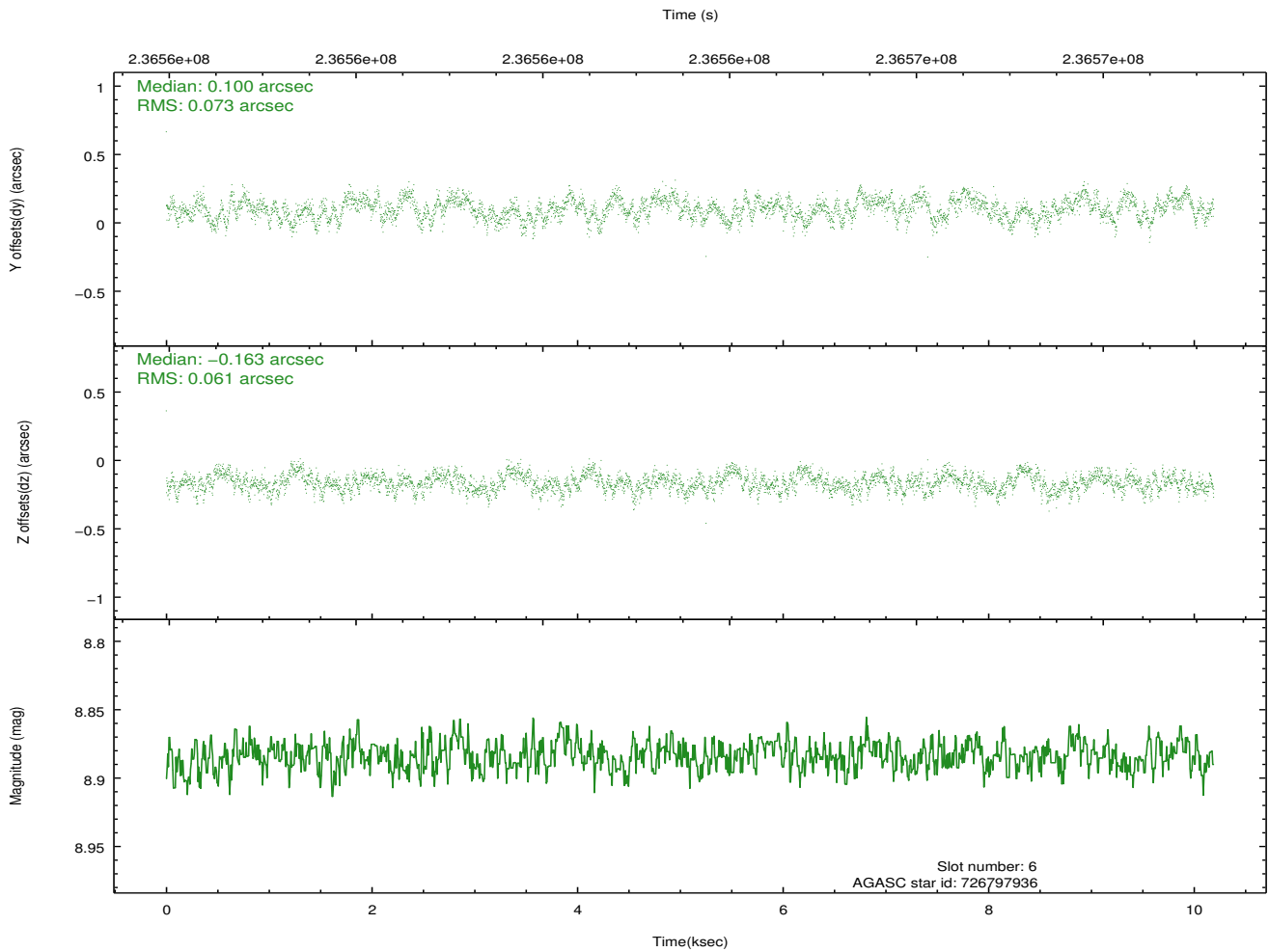
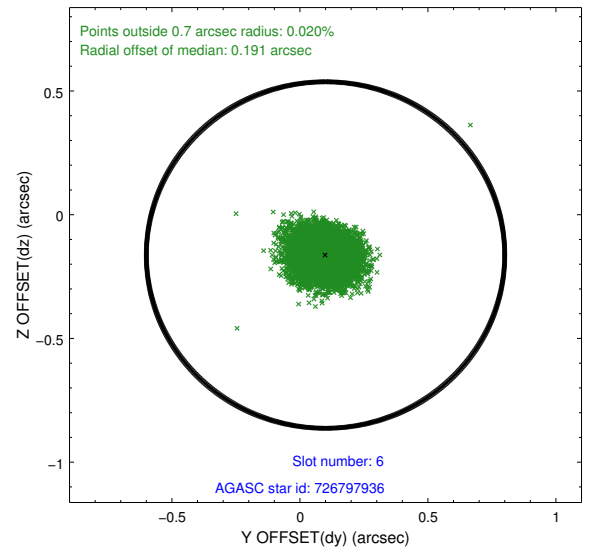
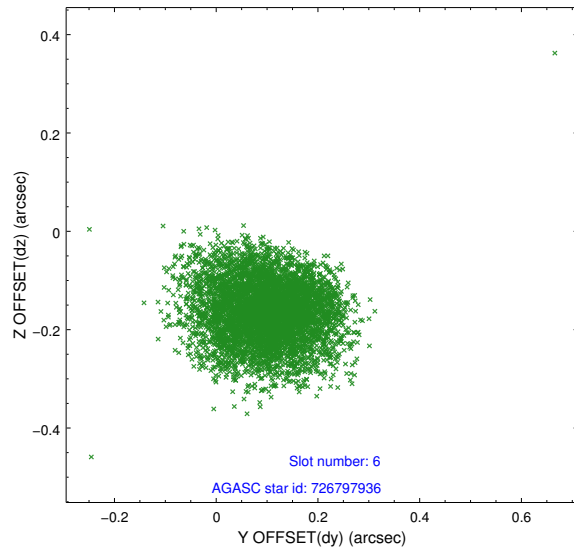
## 2.4.2 Slot 4



### 2.4.3 Slot 5

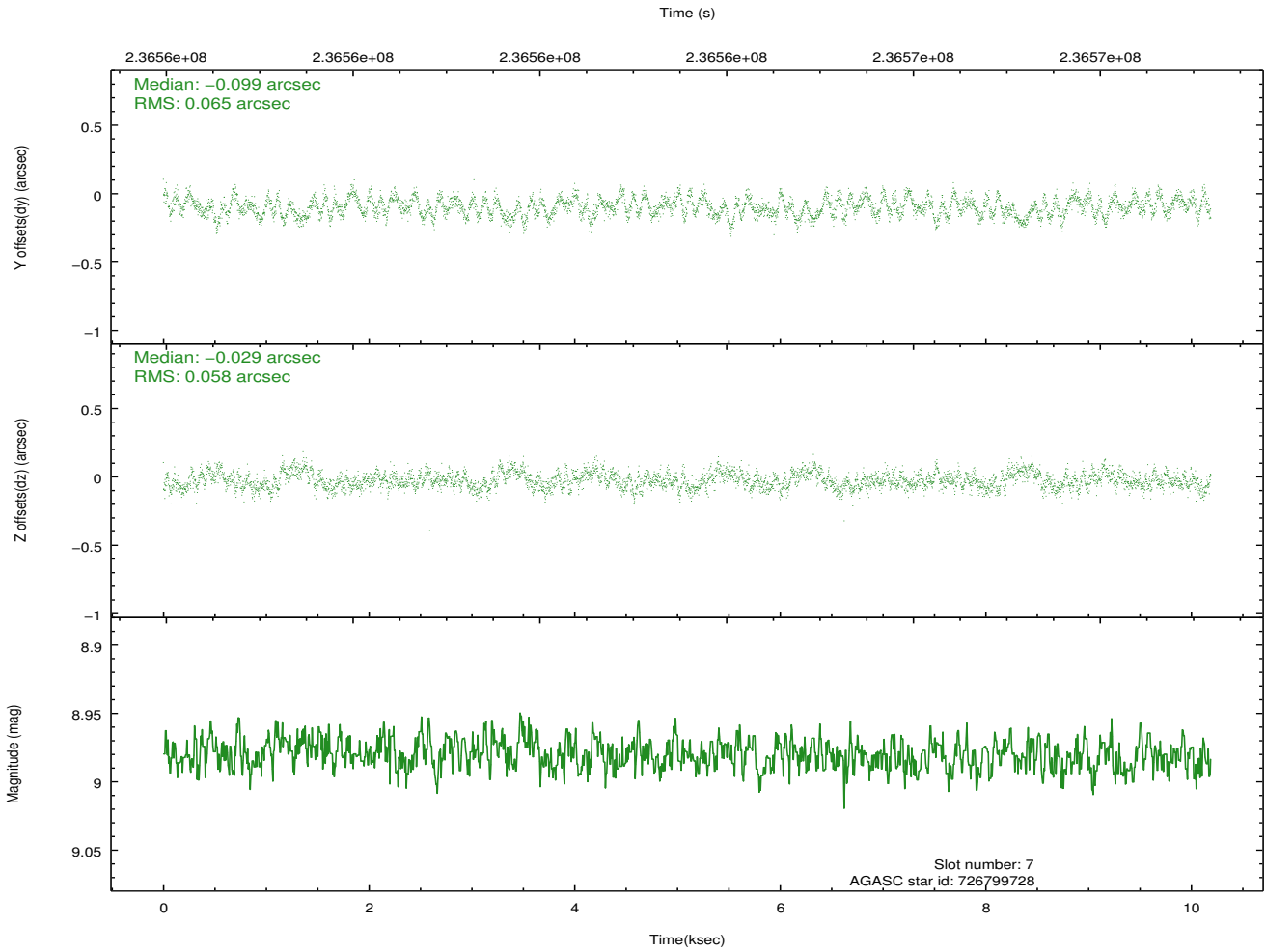
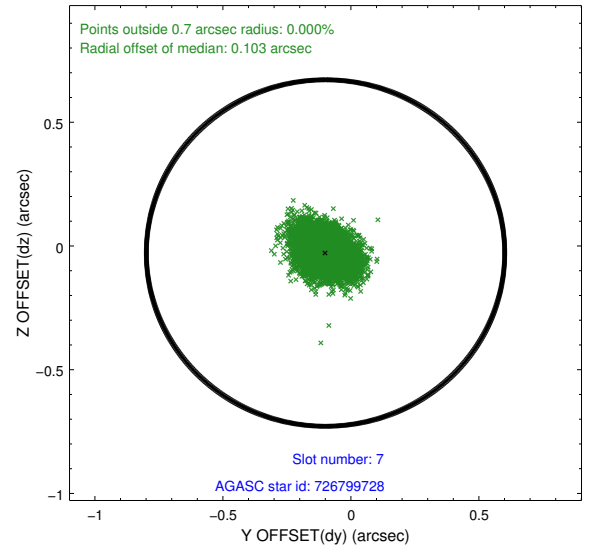
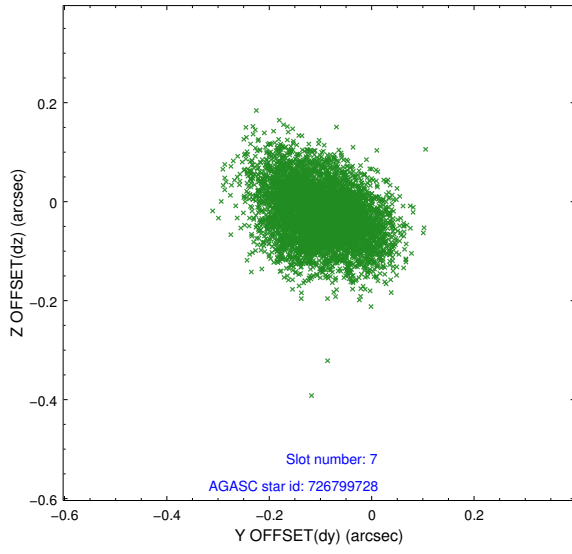


## 2.4.4 Slot 6



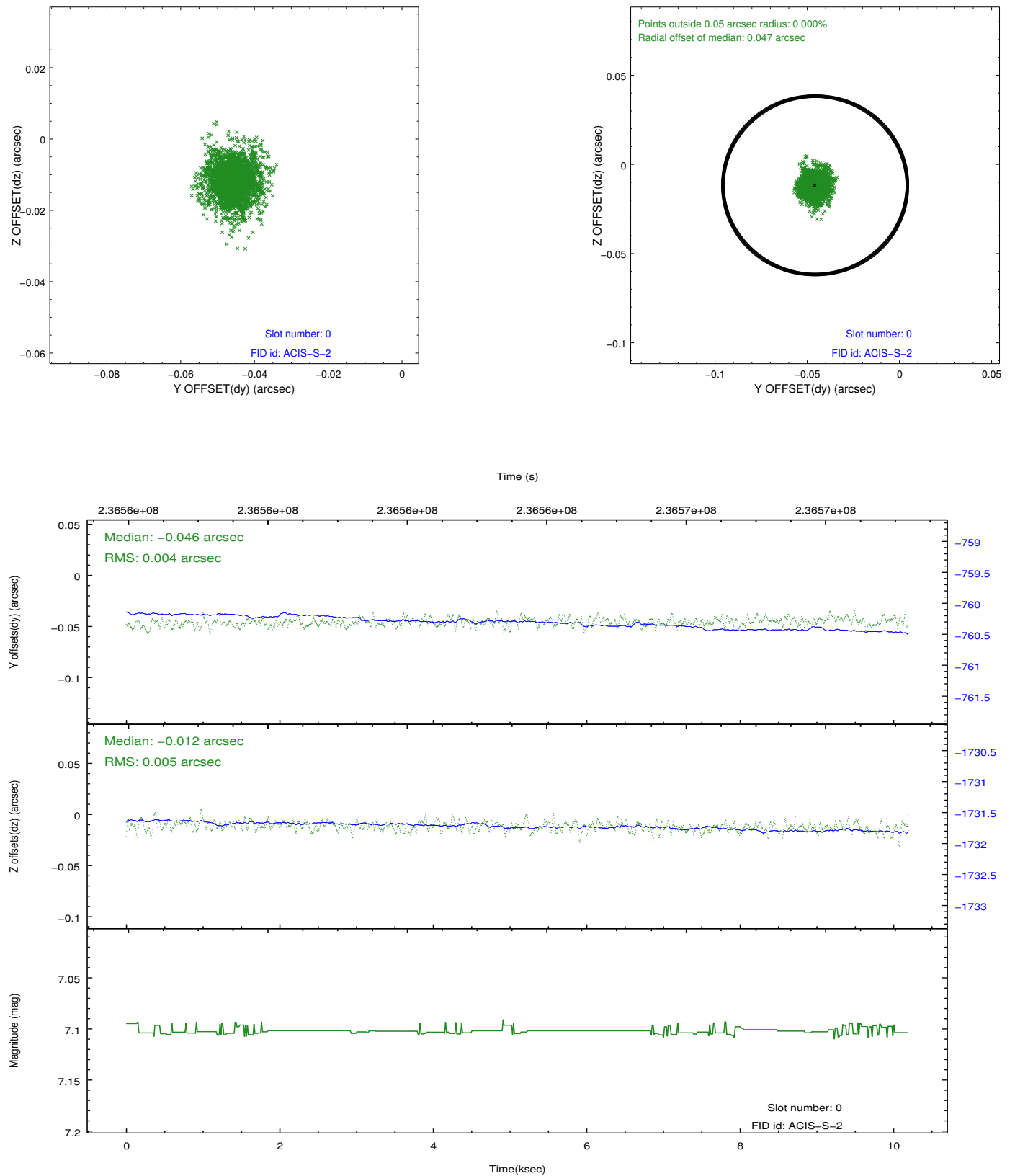


## 2.4.5 Slot 7

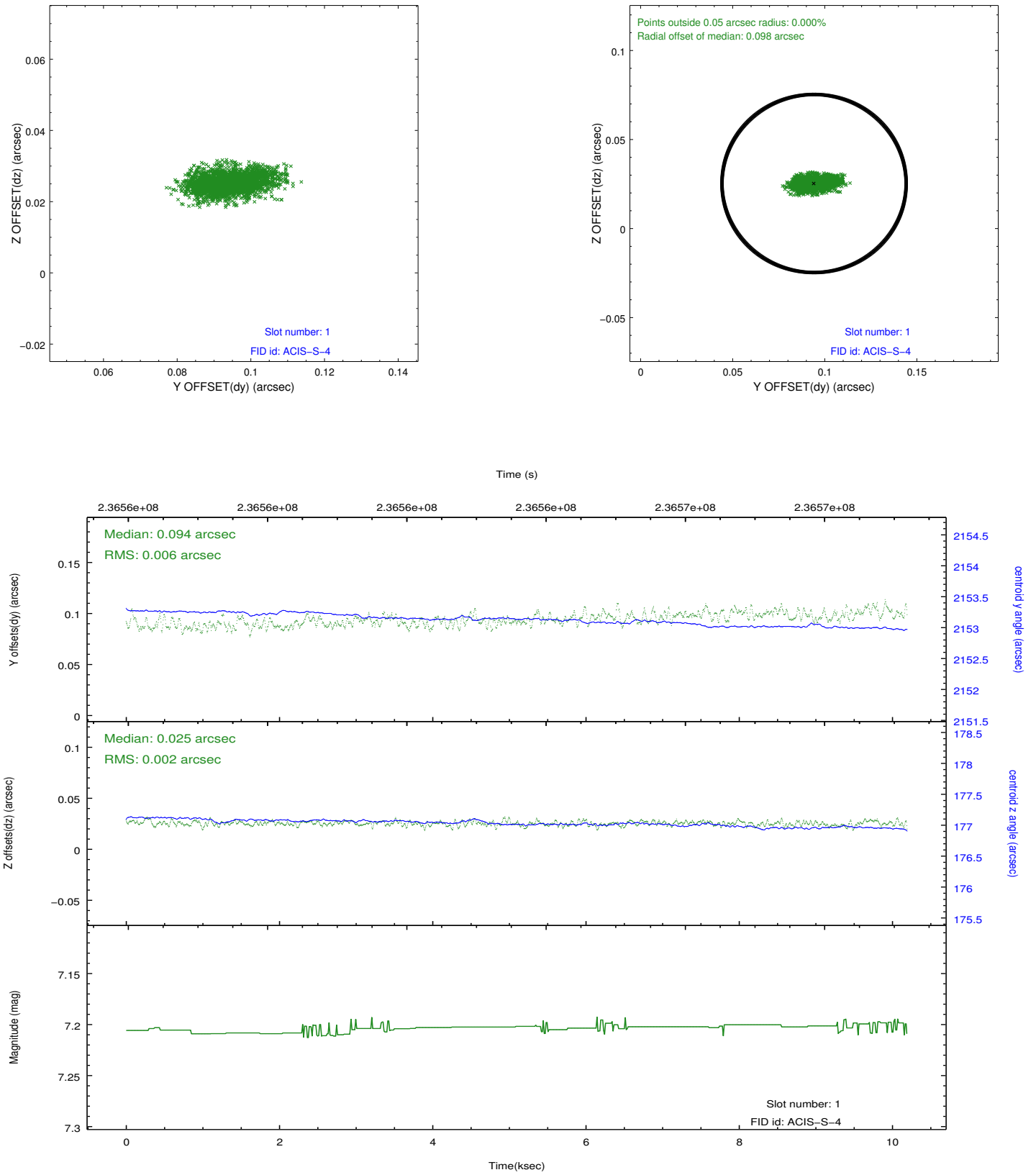


## 2.5 FID Slots

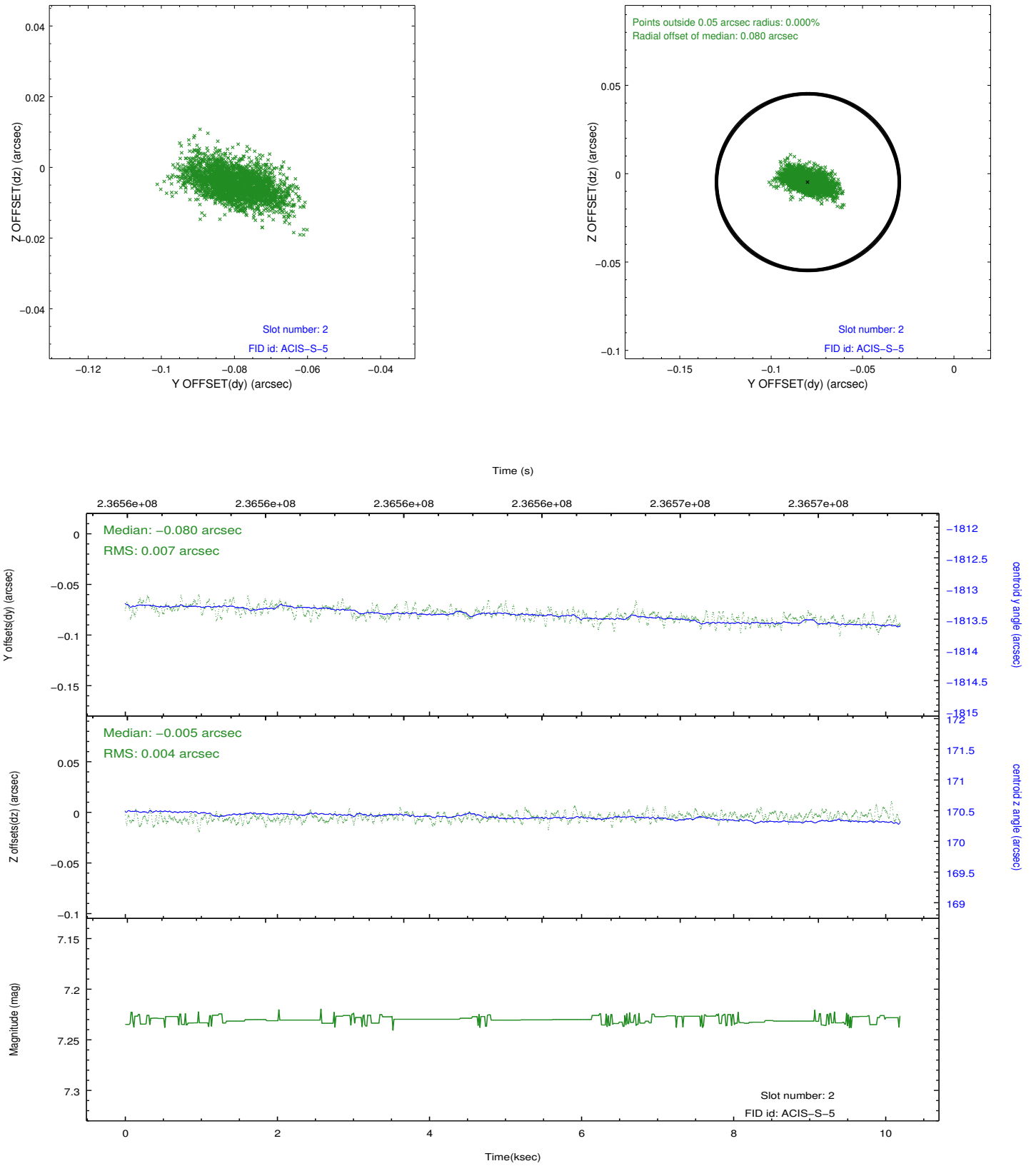
### 2.5.1 Slot 0



## 2.5.2 Slot 1



### 2.5.3 Slot 2



## A Summary

### A.1 Status

V&V Scientist	Beth Sundheim
V&V Date (YYYY-MM-DD)	2013.03.12
V&V Edition	1
V&V Disposition and Status	OK
V&V Charge Time	10.18559

### A.2 Comments