

V&V Reference Report

L2 ASCDS Version : 8.4.5

Observation 62058 - L2 Version 5
Chandra X-Ray Center

L2 Processing Date : Aug 27 2012

Contents

1	Front	2
2	OBI	3
2.1	OBI	3
2.1.1	Images	3
2.1.2	Bias	3
2.1.3	Parameters	4
2.1.4	Events	4
2.2	Compared Parameters	5
2.3	Star Slots	6
2.4	FID Slots	6
A	Summary	7
A.1	Status	7
A.2	Comments	7

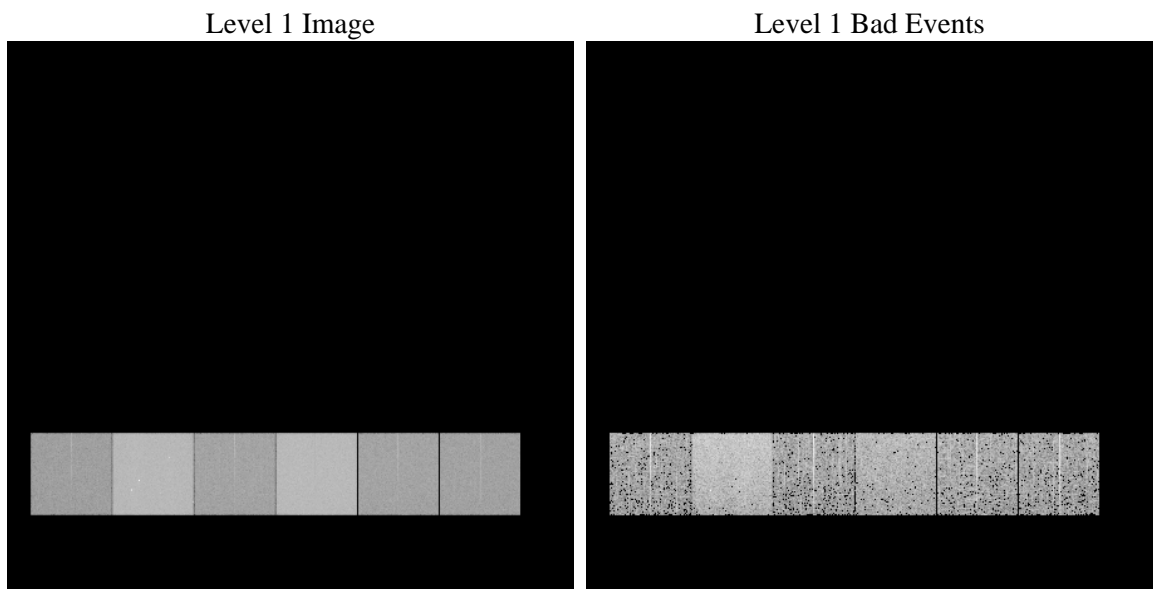
1 Front

seq_num	 	Sequence number
obs_id	62058	Observation id
title	ACIS-456789 diagnostics	Proposal title
observer	CHANDRA engineering request/realtime commanding	Principal investig
object	 	Source name
dtcycle	0	
cycle	P	events from which exps? Prim/Second/Both
ra_targ	0.0	Observer's specified target RA [deg]
dec_targ	0.0	Observer's specified target Dec [deg]
ra_nom	12.381921453477	Nominal RA [deg]
dec_nom	-60.318774591739	Nominal Dec [deg]
roll_nom	145.25261014031	Nominal Roll [deg]
revision	5	Processing version of data
ontime	4125.8281550407	Sum of GTIs [s]
livetime	4073.5844346662	Livetime [s]
ontime4	1636.7236700952	Sum of GTIs [s]
ontime5	4405.0279241055	Sum of GTIs [s]
ontime6	1818.221799925	Sum of GTIs [s]
ontime7	4125.8281550407	Sum of GTIs [s]
ontime8	1827.9449198991	Sum of GTIs [s]
ontime9	1779.3295094669	Sum of GTIs [s]
l2events	1235638	Number of level 2 events

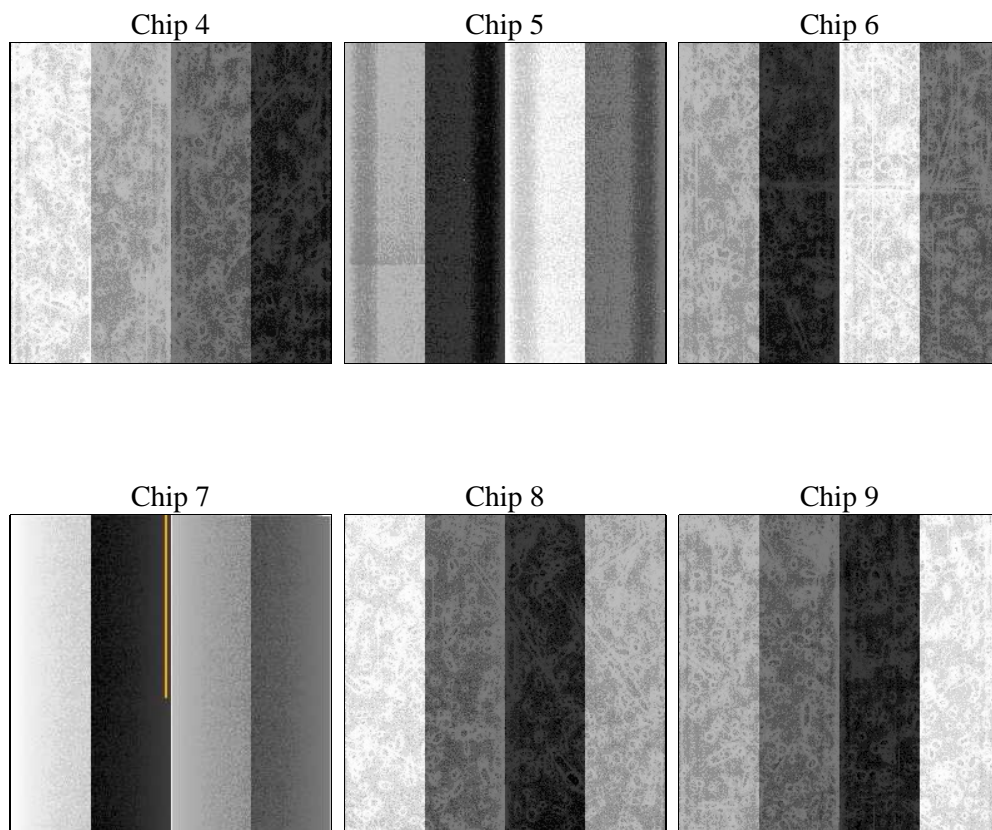
2 OBI

2.1 OBI

2.1.1 Images



2.1.2 Bias



2.1.3 Parameters

obi_num	0	Obi number	sched_exp_time	0.0	[s] Scheduled observation exposure time
ascdsver	8.4.5	Processing system revision	ontime	4125.8281550407	Sum of GTIs [s]
caldsver	4.5.1.1	 	ontime4	1636.7236700952	Sum of GTIs [s]
date	2012-08-27T19:26:50	Date and time of file creation	ontime5	4405.0279241055	Sum of GTIs [s]
revision	5	Processing version of data	ontime6	1818.221799925	Sum of GTIs [s]
			ontime7	4125.8281550407	Sum of GTIs [s]
			ontime8	1827.9449198991	Sum of GTIs [s]
			ontime9	1779.3295094669	Sum of GTIs [s]
			l1events	1411983	Number of level 1 events

2.1.4 Events

	ccd 4	ccd 5	ccd 6	ccd 7	ccd 8	ccd 9		ccd 4	ccd 5	ccd 6	ccd 7	ccd 8	ccd 9
level 1 events	148626	366409	176718	377935	176848	165447	grade 0 events	75259	88094	87331	91508	87379	81767
rejected events	16331	34337	16916	22343	18220	16493		50%	24%	49%	24%	49%	49%
rejected %	10%	9%	9%	5%	10%	9%	grade 1 events	448	263	512	236	485	458
								0%	0%	0%	0%	0%	0%
							grade 2 events	23139	112609	27576	78474	27993	26342
								15%	30%	15%	20%	15%	15%
							grade 3 events	8090	23272	9992	36502	10074	9181
								5%	6%	5%	9%	5%	5%
							grade 4 events	8134	22927	9987	36142	10095	9223
								5%	6%	5%	9%	5%	5%
							grade 5 events	1170	7084	1356	5186	1448	1282
								0%	1%	0%	1%	0%	0%
							grade 6 events	17673	85419	24916	112966	23087	22441
								11%	23%	14%	29%	13%	13%
							grade 7 events	14713	26741	15048	16921	16287	14753
								9%	7%	8%	4%	9%	8%

2.2 Compared Parameters

Parameter	Planned	Actual
Instrument	ACIS	ACIS
Detector	ACIS-456789	ACIS-456789
Grating	NONE	NONE
Data mode	FAINT	FAINT
Observation mode	SECONDARY	SECONDARY
[deg] Pointing RA	0	12.38192145347739
[deg] Pointing Dec	0	-60.31877459173879
[deg] Pointing Roll	0.0	145.2526101403098
[mm] SIM focus pos	-0.684267	-0.7809083437167272
[mm] SIM defocus	0	0.7524282956875696
[mm] SIM translation stage pos	-190.132523	250.466033080201
[mm] SIM translation stage offset	0	-0.01005468664627074
[s] Observation start time (MET)	74465275.948791	74465275.18032201
Observation start date	2000-05-11T20:47:56	2000-05-11T20:47:55
[s] Observation end time (MET)	74511765.8505	74511765.082031
Observation end date	2000-05-12T09:42:46	2000-05-12T09:42:45
Read mode	TIMED	TIMED

Parameter	Planned	Actual
Obspar format version number	7	7
Obspar file type	PREDICTED	ACTUAL
Obspar update status	NONE	UPDATED
On-chip summing requested	N	N
Subarray requested	NONE	NONE
Alternating exposures requested	N	N
[s] Primary exposure time	3.2	3.2

2.3 Star Slots

2.4 FID Slots

A Summary

A.1 Status

V&V Scientist	Jen Lauer
V&V Date (YYYY-MM-DD)	2012.08.30
V&V Edition	1
V&V Disposition and Status	OK
V&V Charge Time	4.1258281550407

A.2 Comments