

# V&V Reference Report

## L2 ASCDS Version : 8.4.5

Observation 62008 - L2 Version 5  
Chandra X-Ray Center

L2 Processing Date : Aug 30 2012

## Contents

<b>1</b>	<b>Front</b>	<b>2</b>
<b>2</b>	<b>OBI</b>	<b>3</b>
2.1	OBI . . . . .	3
2.1.1	Images . . . . .	3
2.1.2	Bias . . . . .	3
2.1.3	Parameters . . . . .	4
2.1.4	Events . . . . .	4
2.2	Compared Parameters . . . . .	5
2.3	Star Slots . . . . .	6
2.4	FID Slots . . . . .	6
<b>A</b>	<b>Summary</b>	<b>7</b>
A.1	Status . . . . .	7
A.2	Comments . . . . .	7

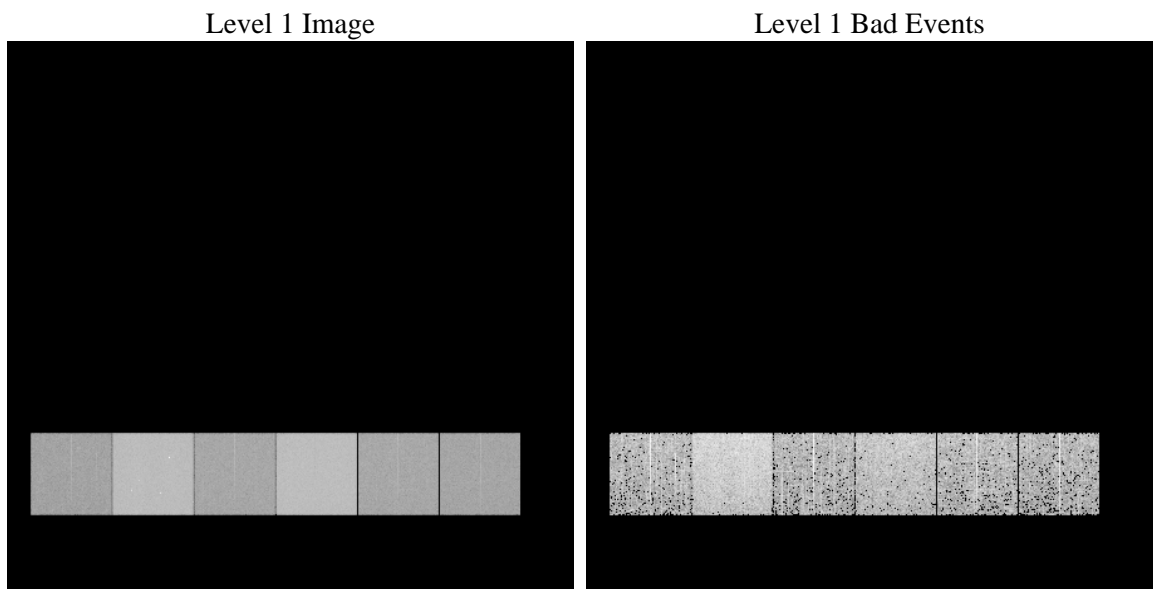
# 1 Front

seq_num	&#160	Sequence number
obs_id	62008	Observation id
title	ACIS-456789 diagnostics	Proposal title
observer	CHANDRA engineering request/realtime commanding	Principal investig
object	&#160	Source name
dtcycle	0	&#160
cycle	P	events from which exps? Prim/Second/Both
ra_targ	0.0	Observer's specified target RA [deg]
dec_targ	0.0	Observer's specified target Dec [deg]
ra_nom	140.96849556691	Nominal RA [deg]
dec_nom	-61.576867037319	Nominal Dec [deg]
roll_nom	216.77244546256	Nominal Roll [deg]
revision	5	Processing version of data
ontime	4336.0038741082	Sum of GTIs [s]
livetime	4281.0987822262	Livetime [s]
ontime4	1724.231850028	Sum of GTIs [s]
ontime5	4644.3867204338	Sum of GTIs [s]
ontime6	1896.0069695711	Sum of GTIs [s]
ontime7	4336.0038741082	Sum of GTIs [s]
ontime8	1940.72641325	Sum of GTIs [s]
ontime9	1860.3554997593	Sum of GTIs [s]
l2events	1254208	Number of level 2 events

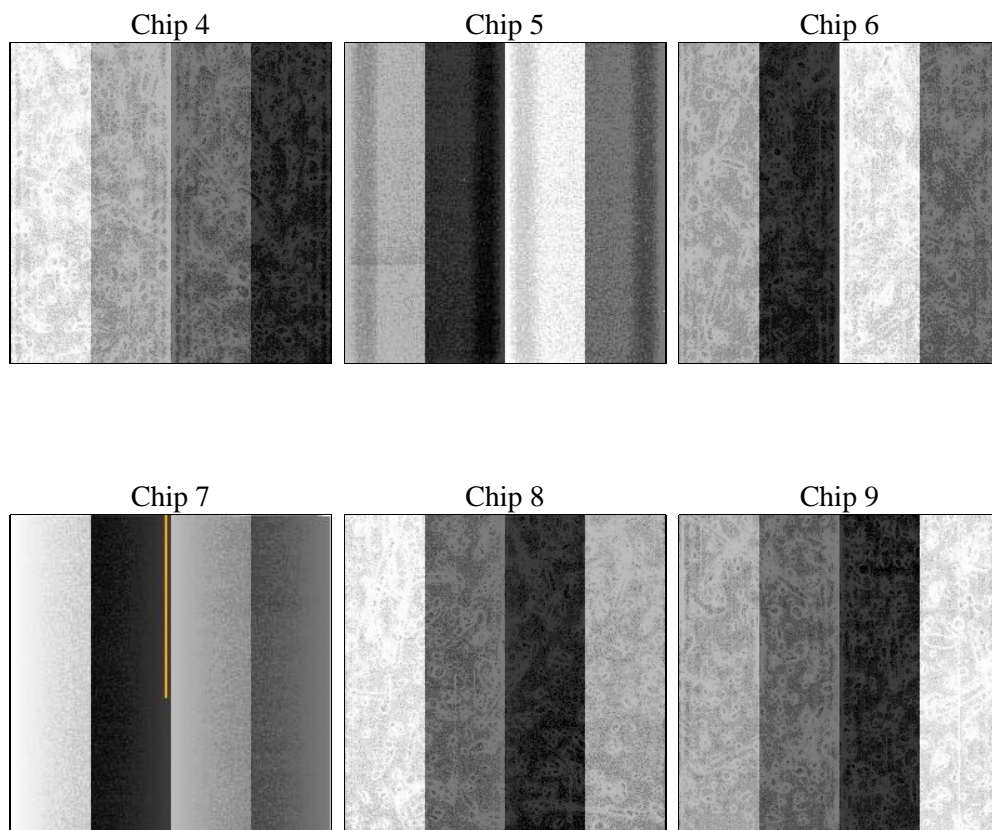
## 2 OBI

### 2.1 OBI

#### 2.1.1 Images



#### 2.1.2 Bias



### 2.1.3 Parameters

obi_num	0	Obi number	sched_exp_time	0.0	[s] Scheduled observation exposure time
ascdsver	8.4.5	Processing system revision	ontime	4336.0038741082	Sum of GTIs [s]
caldbver	4.5.1.1	&#160	ontime4	1724.231850028	Sum of GTIs [s]
date	2012-08-30T02:52:12	Date and time of file creation	ontime5	4644.3867204338	Sum of GTIs [s]
revision	5	Processing version of data	ontime6	1896.0069695711	Sum of GTIs [s]
			ontime7	4336.0038741082	Sum of GTIs [s]
			ontime8	1940.72641325	Sum of GTIs [s]
			ontime9	1860.3554997593	Sum of GTIs [s]
			l1events	1434056	Number of level 1 events

### 2.1.4 Events

	ccd 4	ccd 5	ccd 6	ccd 7	ccd 8	ccd 9		ccd 4	ccd 5	ccd 6	ccd 7	ccd 8	ccd 9
level 1 events	152418	371516	177557	384331	181539	166695	grade 0 events	75875	89587	87940	93842	90122	82592
rejected events	18407	34504	17059	22711	18506	16037		49%	24%	49%	24%	49%	49%
rejected %	12%	9%	9%	5%	10%	9%	grade 1 events	468	247	466	251	481	460
								0%	0%	0%	0%	0%	0%
							grade 2 events	23448	113932	27811	80717	28706	26664
								15%	30%	15%	21%	15%	15%
							grade 3 events	8453	23333	10095	37234	10050	9272
								5%	6%	5%	9%	5%	5%
							grade 4 events	8397	23380	9809	37110	10136	9341
								5%	6%	5%	9%	5%	5%
							grade 5 events	1178	7123	1322	5137	1466	1286
								0%	1%	0%	1%	0%	0%
							grade 6 events	17838	86780	24843	112717	24019	22789
								11%	23%	13%	29%	13%	13%
							grade 7 events	16761	27134	15271	17323	16559	14291
								10%	7%	8%	4%	9%	8%

## 2.2 Compared Parameters

Parameter	Planned	Actual	Parameter	Planned	Actual
Instrument	ACIS	ACIS	Obspar format version number	7	7
Detector	ACIS-456789	ACIS-456789	Obspar file type	PREDICTED	ACTUAL
Grating	NONE	NONE	Obspar update status	NONE	UPDATED
Data mode	FAINT	FAINT	On-chip summing requested	N	N
Observation mode	SECONDARY	SECONDARY	Subarray requested	NONE	NONE
[deg] Pointing RA	0	140.9684955669103	Alternating exposures requested	N	N
[deg] Pointing Dec	0	-61.57686703731894	[s] Primary exposure time	3.2	3.2
[deg] Pointing Roll	0.0	216.7724454625633			
[mm] SIM focus pos	-0.684267	-0.6828225247311905			
[mm] SIM defocus	0	0.8505141146731063			
[mm] SIM translation stage pos	-190.132523	250.466033080201			
[mm] SIM translation stage offset	0	-0.01005468664627074			
[s] Observation start time (MET)	78807834.158628	78807833.390157			
Observation start date	2000-07-01T03:03:54	2000-07-01T03:03:53			
[s] Observation end time (MET)	78854625.410346	78854624.641883			
Observation end date	2000-07-01T16:03:45	2000-07-01T16:03:44			
Read mode	TIMED	TIMED			

## **2.3 Star Slots**

## **2.4 FID Slots**

## **A Summary**

### **A.1 Status**

V&V Scientist	Jen Lauer
V&V Date (YYYY-MM-DD)	2012.09.04
V&V Edition	1
V&V Disposition and Status	OK
V&V Charge Time	4.3360038741082

### **A.2 Comments**