

V&V Reference Report

L2 ASCDS Version : 7.6.10

Observation 62008 - L2 Version 001
Chandra X-Ray Center

L2 Processing Date : May 27 2007

Contents

1	Front	2
2	OBI	3
2.1	OBI	3
2.1.1	Images	3
2.1.2	Bias	3
2.1.3	Parameters	4
2.1.4	Events	4
2.2	Compared Parameters	5
2.3	Star Slots	6
2.4	FID Slots	6
A	Summary	7
A.1	Status	7
A.2	Comments	7

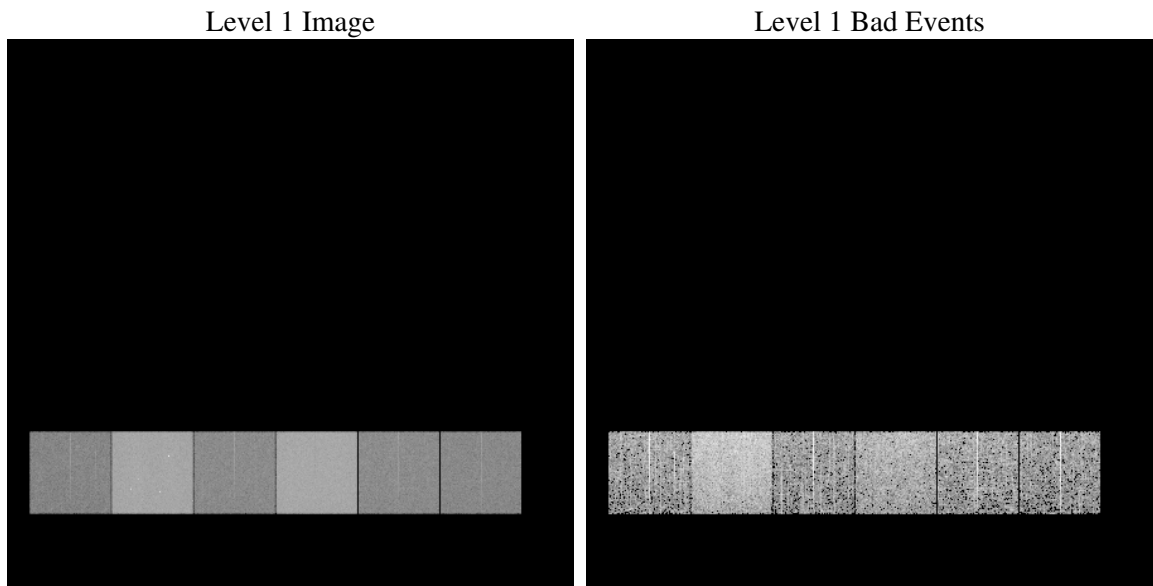
1 Front

seq_num	
obs_id	62008
title	ACIS-456789 diagnostics
observer	CHANDRA engineering request/realtime commanding
object	
dtcycle	0
cycle	P
ra_targ	0.0
dec_targ	0.0
ra_nom	140.96849556691
dec_nom	-61.576867037319
roll_nom	216.77244546256
revision	4
ontime	4335.1628739387
livetime	4280.2684313072
ontime4	1723.0231233239
ontime5	4643.095913738
ontime6	1894.7572028637
ontime7	4335.1628739387
ontime8	1940.213733077
ontime9	1858.9826130569
l2events	1254479

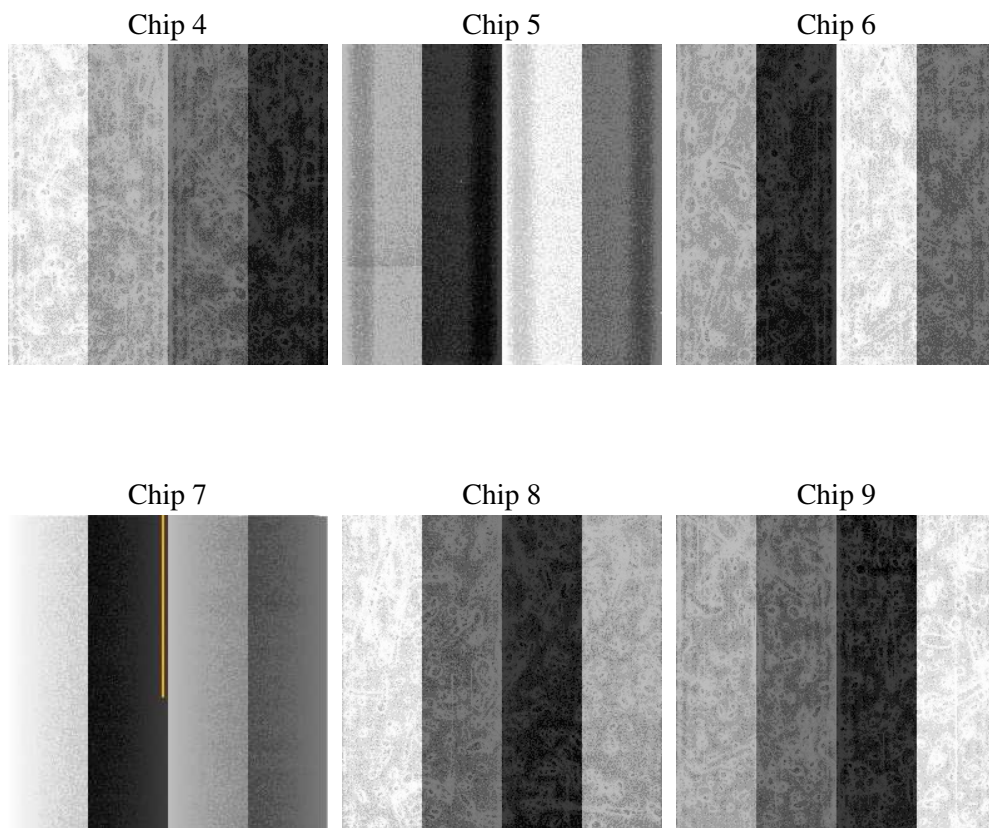
2 OBI

2.1 OBI

2.1.1 Images



2.1.2 Bias



2.1.3 Parameters

obi_num	0
ascdsver	7.6.10
caldsver	3.4.0
date	2007-05-27T23:40:26
revision	4

sched_exp_time	0.0
ontime	4335.1628739387
ontime4	1723.0231233239
ontime5	4643.095913738
ontime6	1894.7572028637
ontime7	4335.1628739387
ontime8	1940.213733077
ontime9	1858.9826130569
l1events	1434056

2.1.4 Events

	ccd 4	ccd 5	ccd 6	ccd 7	ccd 8	ccd 9
level 1 events	152418	371516	177557	384331	181539	166695
rejected events	18407	34505	17059	22711	18506	16037
rejected %	12%	9%	9%	5%	10%	9%

	ccd 4	ccd 5	ccd 6	ccd 7	ccd 8	ccd 9
grade 0 events	75875	89582	87940	93840	90123	82592
	49%	24%	49%	24%	49%	49%
grade 1 events	468	247	466	251	481	460
	0%	0%	0%	0%	0%	0%
grade 2 events	23448	113937	27811	80719	28705	26664
	15%	30%	15%	21%	15%	15%
grade 3 events	8453	23329	10095	37234	10050	9272
	5%	6%	5%	9%	5%	5%
grade 4 events	8397	23378	9809	37110	10136	9341
	5%	6%	5%	9%	5%	5%
grade 5 events	1178	7122	1322	5137	1466	1286
	0%	1%	0%	1%	0%	0%
grade 6 events	17838	86785	24843	112717	24019	22789
	11%	23%	13%	29%	13%	13%
grade 7 events	16761	27136	15271	17323	16559	14291
	10%	7%	8%	4%	9%	8%

2.2 Compared Parameters

Parameter	Planned	Actual	Parameter	Planned	Actual
Instrument	ACIS	ACIS	Obspar format version number	6	6
Detector	ACIS-456789	ACIS-456789	Obspar file type	PREDICTED	ACTUAL
Grating	NONE	NONE	Obspar update status	NONE	UPDATED
Data mode	FAINT	FAINT	On-chip summing requested	N	N
Observation mode	SECONDARY	SECONDARY	Subarray requested	NONE	NONE
Pointing RA	0	140.9684955669103	Alternating exposures requested	N	N
Pointing Dec	0	-61.57686703731893	Primary exposure time	3.2	3.2
Pointing Roll	0.0	216.7724454625633			
SIM focus pos (mm)	-0.684267	-0.6828225247311905			
SIM defocus (mm)	0	0.8505141146731063			
SIM translation stage pos (mm)	-190.132523	250.466033080201			
SIM translation stage offset (mm)	0	-0.01005468664627074			
Observation start time	78807834.158628	78807833.390157			
Observation start date	2000-07-01T03:03:54	2000-07-01T03:03:53			
Observation end time	78854625.410346	78854624.641883			
Observation end date	2000-07-01T16:03:45	2000-07-01T16:03:44			
Read mode	TIMED	TIMED			

2.3 Star Slots

2.4 FID Slots

A Summary

A.1 Status

V&V Scientist	Jen Lauer
V&V Date (YYYY-MM-DD)	2007.05.29
V&V Edition	1
V&V Disposition and Status	OK
V&V Charge Time	4.33516287

A.2 Comments