

V&V Reference Report

L2 ASCDS Version : 7.6.10

Observation 61998 - L2 Version 001
Chandra X-Ray Center

L2 Processing Date : May 30 2007

Contents

1	Front	2
2	OBI	3
2.1	OBI	3
2.1.1	Images	3
2.1.2	Bias	3
2.1.3	Parameters	4
2.1.4	Events	4
2.2	Compared Parameters	5
2.3	Star Slots	6
2.4	FID Slots	6
A	Summary	7
A.1	Status	7
A.2	Comments	7

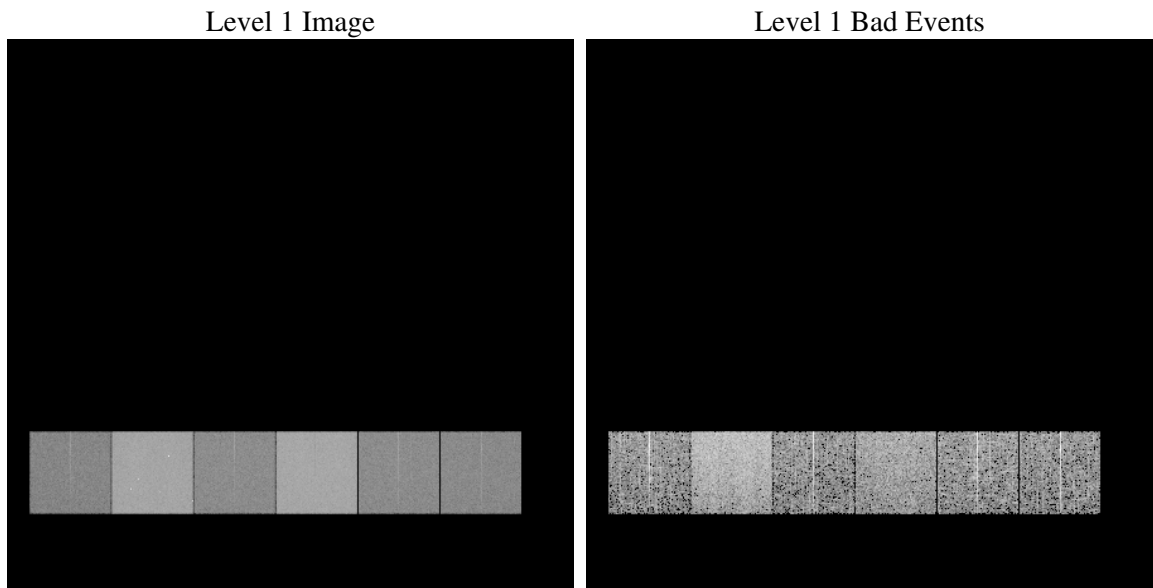
1 Front

seq_num	
obs_id	61998
title	ACIS-456789 diagnostics
observer	CHANDRA engineering request/realtime commanding
object	
dtcycle	0
cycle	P
ra_targ	0.0
dec_targ	0.0
ra_nom	145.41452313866
dec_nom	-60.12579097546
roll_nom	211.47080884315
revision	4
ontime	4330.7871269733
livetime	4275.9480926846
ontime4	1773.7458022088
ontime5	4622.5171612352
ontime6	1997.3364319354
ontime7	4330.7871269733
ontime8	1974.7313017547
ontime9	1911.9856863022
l2events	1261872

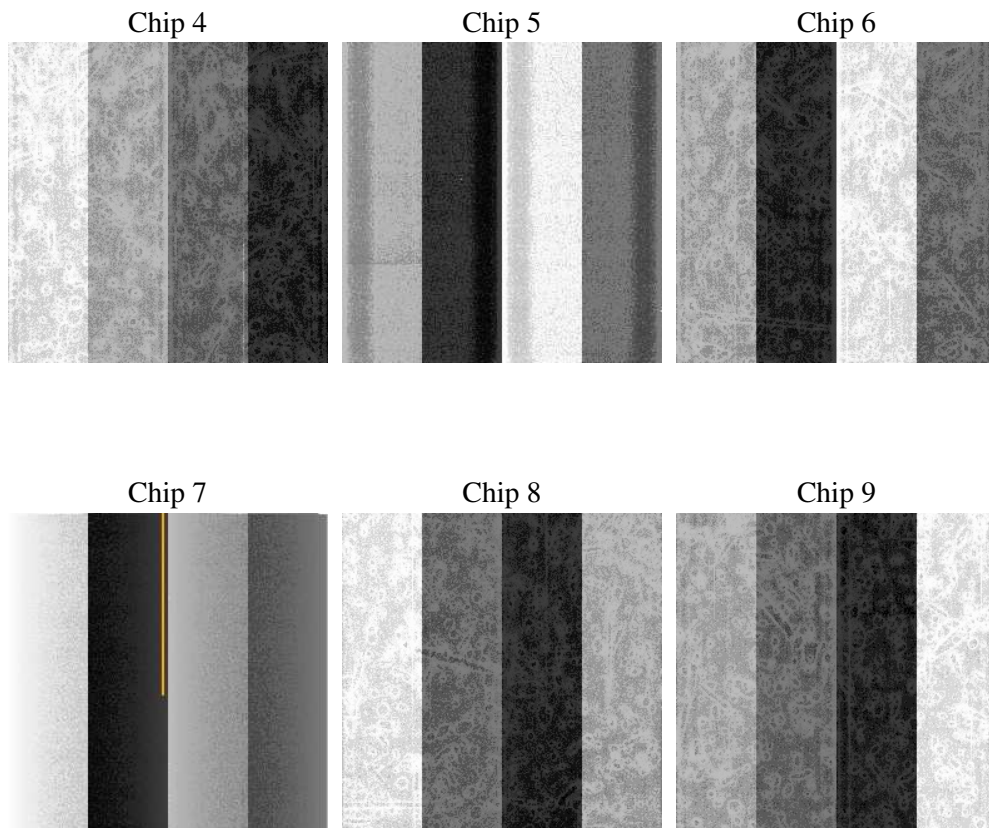
2 OBI

2.1 OBI

2.1.1 Images



2.1.2 Bias



2.1.3 Parameters

obi_num	0
ascdsver	7.6.10
caldbver	3.4.0
date	2007-05-30T23:53:27
revision	4

sched_exp_time	0.0
ontime	4330.7871269733
ontime4	1773.7458022088
ontime5	4622.5171612352
ontime6	1997.3364319354
ontime7	4330.7871269733
ontime8	1974.7313017547
ontime9	1911.9856863022
l1events	1436532

2.1.4 Events

	ccd 4	ccd 5	ccd 6	ccd 7	ccd 8	ccd 9
level 1 events	154575	364787	184936	378075	183192	170967
rejected events	16620	32500	16177	21142	18266	16199
rejected %	10%	8%	8%	5%	9%	9%

	ccd 4	ccd 5	ccd 6	ccd 7	ccd 8	ccd 9
grade 0 events	78128	88425	92199	93184	91498	85170
	50%	24%	49%	24%	49%	49%
grade 1 events	458	259	467	259	465	447
	0%	0%	0%	0%	0%	0%
grade 2 events	24641	112337	29643	79449	29036	27200
	15%	30%	16%	21%	15%	15%
grade 3 events	8480	23484	10337	36915	10443	9602
	5%	6%	5%	9%	5%	5%
grade 4 events	8645	23018	10272	36032	10339	9639
	5%	6%	5%	9%	5%	5%
grade 5 events	1139	6661	1325	4853	1440	1269
	0%	1%	0%	1%	0%	0%
grade 6 events	18324	85249	26611	111615	23883	23397
	11%	23%	14%	29%	13%	13%
grade 7 events	14760	25354	14082	15768	16088	14243
	9%	6%	7%	4%	8%	8%

2.2 Compared Parameters

Parameter	Planned	Actual	Parameter	Planned	Actual
Instrument	ACIS	ACIS	Obspar format version number	6	6
Detector	ACIS-456789	ACIS-456789	Obspar file type	PREDICTED	ACTUAL
Grating	NONE	NONE	Obspar update status	NONE	UPDATED
Data mode	FAINT	FAINT	On-chip summing requested	N	N
Observation mode	SECONDARY	SECONDARY	Subarray requested	NONE	NONE
Pointing RA	0	145.4145231386646	Alternating exposures requested	N	N
Pointing Dec	0	-60.12579097545968	Primary exposure time	3.2	3.2
Pointing Roll	0.0	211.4708088431529			
SIM focus pos (mm)	-0.684267	-0.6828225247311905			
SIM defocus (mm)	0	0.8505141146731063			
SIM translation stage pos (mm)	-190.132523	250.466033080201			
SIM translation stage offset (mm)	0	-0.01005468664627074			
Observation start time	79720547.492254	79720546.723791			
Observation start date	2000-07-11T16:35:47	2000-07-11T16:35:46			
Observation end time	79766217.39393499	79766216.625469			
Observation end date	2000-07-12T05:16:57	2000-07-12T05:16:56			
Read mode	TIMED	TIMED			

2.3 Star Slots

2.4 FID Slots

A Summary

A.1 Status

V&V Scientist	Jen Lauer
V&V Date (YYYY-MM-DD)	2007.05.31
V&V Edition	1
V&V Disposition and Status	OK
V&V Charge Time	4.33078712

A.2 Comments