

V&V Reference Report

L2 ASCDS Version : 7.6.10

Observation 61988 - L2 Version 001
Chandra X-Ray Center

L2 Processing Date : Jun 1 2007

Contents

1	Front	2
2	OBI	3
2.1	OBI	3
2.1.1	Images	3
2.1.2	Bias	3
2.1.3	Parameters	4
2.1.4	Events	4
2.2	Compared Parameters	5
2.3	Star Slots	6
2.4	FID Slots	6
A	Summary	7
A.1	Status	7
A.2	Comments	7

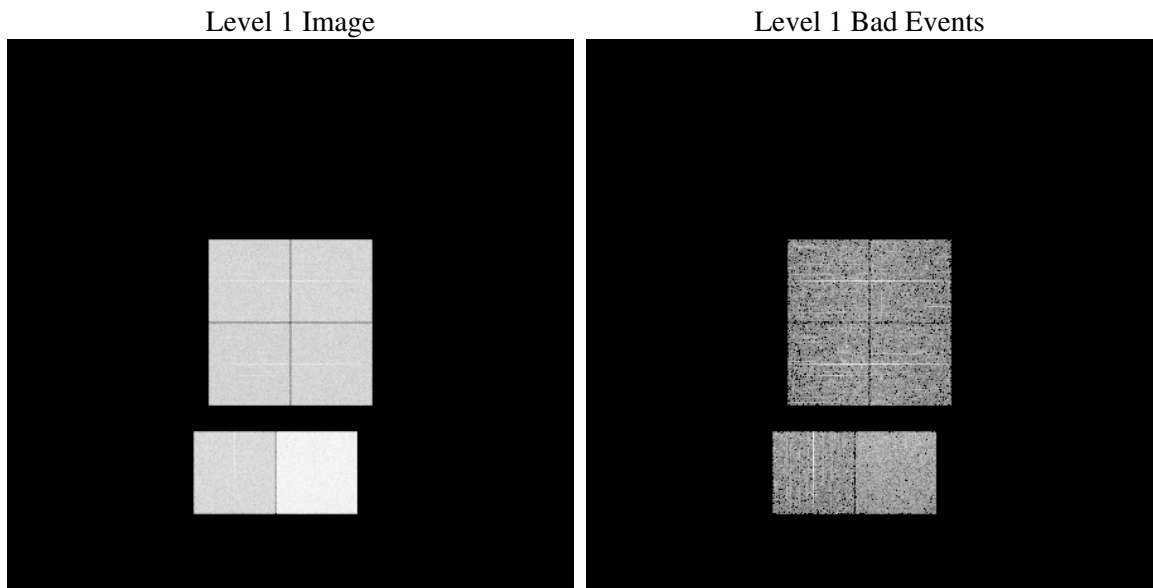
1 Front

seq_num	
obs_id	61988
title	ACIS-012367 diagnostics
observer	CHANDRA engineering request/realtime commanding
object	
dtcycle	0
cycle	P
ra_targ	0.0
dec_targ	0.0
ra_nom	158.99067911916
dec_nom	-54.376521434486
roll_nom	214.59748355105
revision	4
ontime	5449.0057149678
livetime	5380.0071236076
ontime0	2448.581782639
ontime1	2512.6582898796
ontime2	2319.0223626494
ontime3	2389.4991291761
ontime6	2610.7564236075
ontime7	5449.0057149678
l2events	1376692

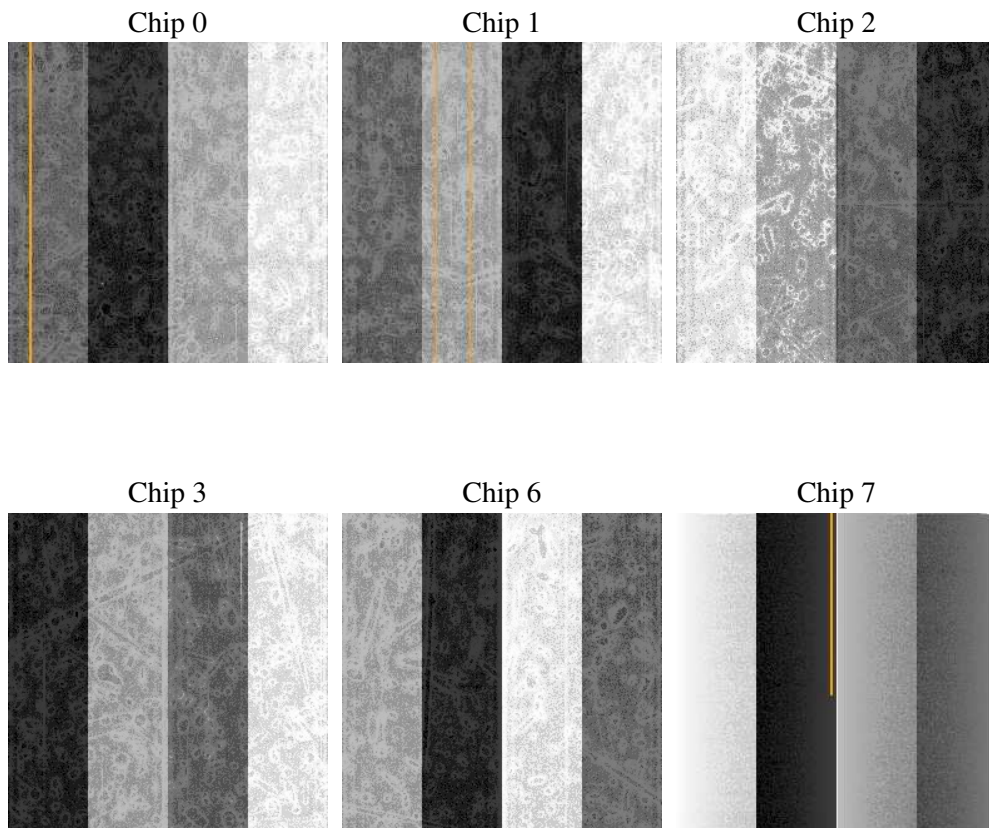
2 OBI

2.1 OBI

2.1.1 Images



2.1.2 Bias



2.1.3 Parameters

obi_num	0
ascdsver	7.6.10
caldbver	3.4.0
date	2007-06-01T07:31:28
revision	4

sched_exp_time	0.0
ontime	5449.0057149678
ontime0	2448.581782639
ontime1	2512.6582898796
ontime2	2319.0223626494
ontime3	2389.4991291761
ontime6	2610.7564236075
ontime7	5449.0057149678
l1events	1553783

2.1.4 Events

	ccd 0	ccd 1	ccd 2	ccd 3	ccd 6	ccd 7
level 1 events	213811	217800	205078	210901	237527	468666
rejected events	19017	17706	18720	18441	19493	25447
rejected %	8%	8%	9%	8%	8%	5%

	ccd 0	ccd 1	ccd 2	ccd 3	ccd 6	ccd 7
grade 0 events	107558	110515	104063	107969	119251	114028
	50%	50%	50%	51%	50%	24%
grade 1 events	588	525	519	545	580	329
	0%	0%	0%	0%	0%	0%
grade 2 events	34476	35361	32543	33787	37315	98893
	16%	16%	15%	16%	15%	21%
grade 3 events	12325	12475	11629	12092	13336	45368
	5%	5%	5%	5%	5%	9%
grade 4 events	12292	12705	11705	12124	13559	45116
	5%	5%	5%	5%	5%	9%
grade 5 events	1525	1463	1363	1407	1612	5996
	0%	0%	0%	0%	0%	1%
grade 6 events	28383	29038	26418	26760	34573	140092
	13%	13%	12%	12%	14%	29%
grade 7 events	16664	15718	16838	16217	17301	18844
	7%	7%	8%	7%	7%	4%

2.2 Compared Parameters

Parameter	Planned	Actual	Parameter	Planned	Actual
Instrument	ACIS	ACIS	Obspar format version number	6	6
Detector	ACIS-012367	ACIS-012367	Obspar file type	PREDICTED	ACTUAL
Grating	NONE	NONE	Obspar update status	NONE	UPDATED
Data mode	FAINT	FAINT	On-chip summing requested	N	N
Observation mode	SECONDARY	SECONDARY	Subarray requested	NONE	NONE
Pointing RA	0	158.9906791191576	Alternating exposures requested	N	N
Pointing Dec	0	-54.37652143448642	Primary exposure time	3.2	3.2
Pointing Roll	0.0	214.5974835510452			
SIM focus pos (mm)	-0.782348	-0.6828225247311905			
SIM defocus (mm)	0	0.8505141146731063			
SIM translation stage pos (mm)	-233.592463	250.466033080201			
SIM translation stage offset (mm)	0	-0.01005468664627074			
Observation start time	80679637.977799	80679637.209327			
Observation start date	2000-07-22T19:00:38	2000-07-22T19:00:37			
Observation end time	80690148.32819	80690147.559718			
Observation end date	2000-07-22T21:55:48	2000-07-22T21:55:47			
Read mode	TIMED	TIMED			

2.3 Star Slots

2.4 FID Slots

A Summary

A.1 Status

V&V Scientist	Beth Sundheim
V&V Date (YYYY-MM-DD)	2007.06.01
V&V Edition	1
V&V Disposition and Status	OK
V&V Charge Time	5.44900571

A.2 Comments

Focal plane temperature is warmer than -118.7 C degrees during the first ~3 ksec of this observation. The ACIS spectral response calibration for the front-illuminated chips is less accurate at these warmer temperatures than it is at -119.7 C. The back-illuminated chips are not affected at the focal plane temperatures recorded for this observation.