

# V&V Reference Report

## L2 ASCDS Version : 8.4.5

Observation 61568 - L2 Version 3  
Chandra X-Ray Center

L2 Processing Date : Sep 20 2012

## Contents

<b>1</b>	<b>Front</b>	<b>2</b>
<b>2</b>	<b>OBI</b>	<b>3</b>
2.1	OBI . . . . .	3
2.1.1	Images . . . . .	3
2.1.2	Bias . . . . .	3
2.1.3	Parameters . . . . .	4
2.1.4	Events . . . . .	4
2.2	Compared Parameters . . . . .	5
2.3	Star Slots . . . . .	6
2.4	FID Slots . . . . .	6
<b>A</b>	<b>Summary</b>	<b>7</b>
A.1	Status . . . . .	7
A.2	Comments . . . . .	7

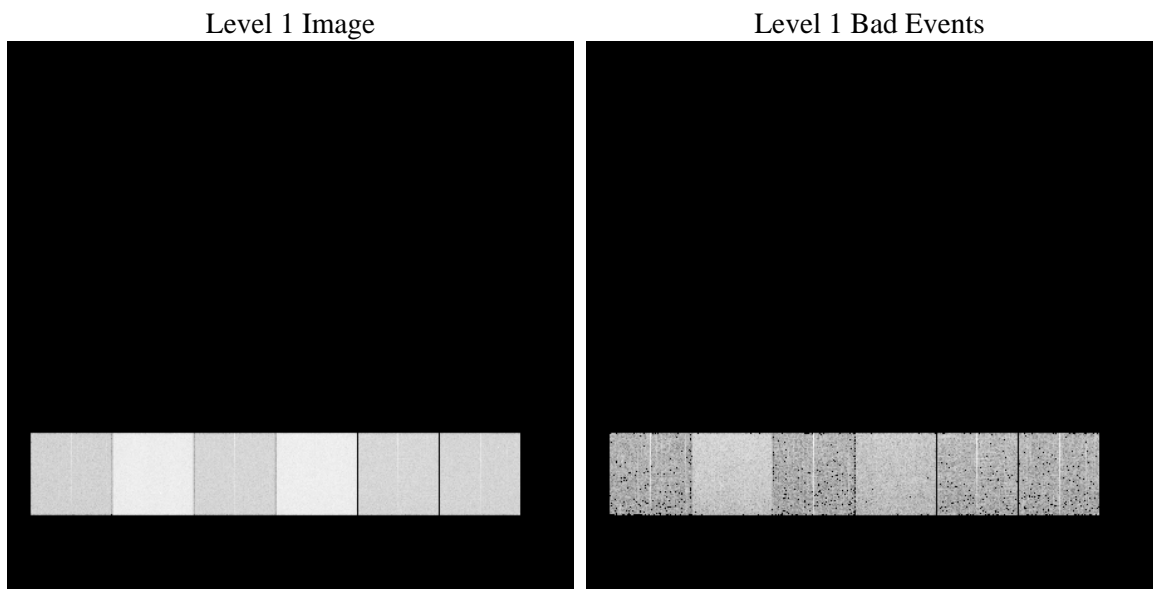
# 1 Front

seq_num	&#160	Sequence number
obs_id	61568	Observation id
title	ACIS-456789 diagnostics	Proposal title
observer	CHANDRA engineering request/realtime commanding	Principal investig
object	&#160	Source name
dtcycle	0	&#160
cycle	P	events from which exps? Prim/Second/Both
ra_targ	0.0	Observer's specified target RA [deg]
dec_targ	0.0	Observer's specified target Dec [deg]
ra_nom	160.00015969244	Nominal RA [deg]
dec_nom	-20.028656718303	Nominal Dec [deg]
roll_nom	237.60901082311	Nominal Roll [deg]
revision	3	Processing version of data
ontime	6015.6078030467	Sum of GTIs [s]
livetime	5939.4345548804	Livetime [s]
ontime4	2291.4129811078	Sum of GTIs [s]
ontime5	6495.2273730636	Sum of GTIs [s]
ontime6	2469.8764313161	Sum of GTIs [s]
ontime7	6015.6078030467	Sum of GTIs [s]
ontime8	2502.0805007219	Sum of GTIs [s]
ontime9	2450.2241100669	Sum of GTIs [s]
l2events	1321725	Number of level 2 events

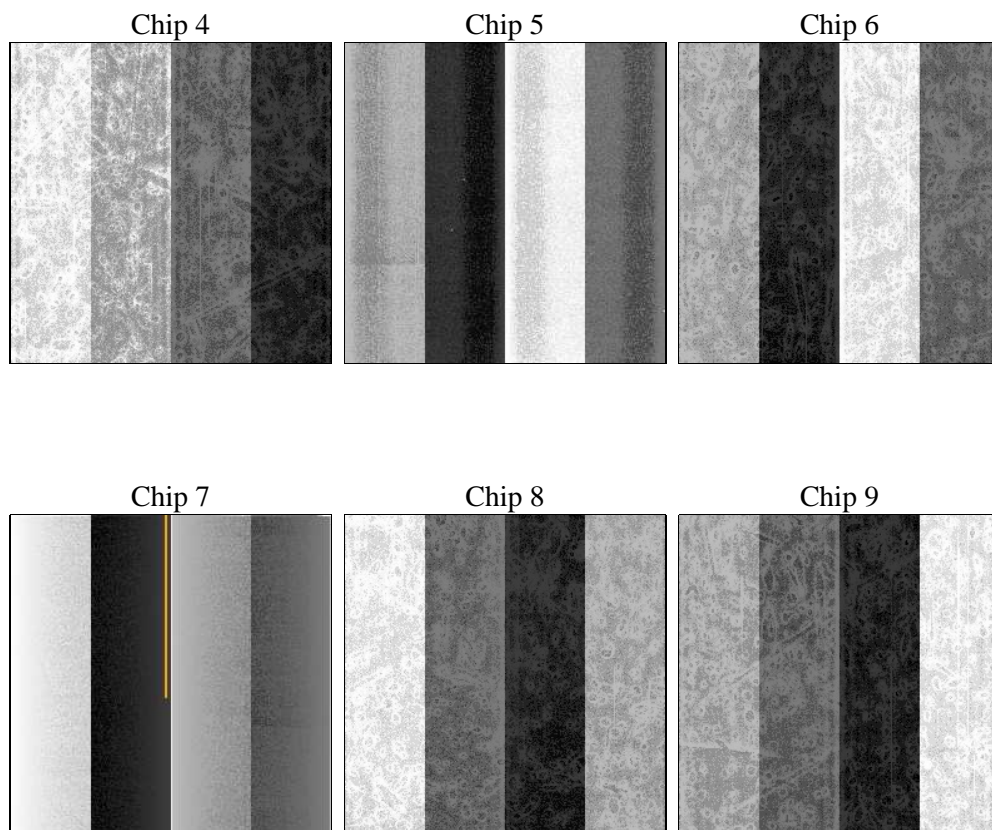
## 2 OBI

### 2.1 OBI

#### 2.1.1 Images



#### 2.1.2 Bias



### 2.1.3 Parameters

obi_num	0	Obi number	sched_exp_time	0.0	[s] Scheduled observation exposure time
ascdsver	8.4.5	Processing system revision	ontime	6015.6078030467	Sum of GTIs [s]
caldbver	4.5.1.1	&#160	ontime4	2291.4129811078	Sum of GTIs [s]
date	2012-09-20T13:35:10	Date and time of file creation	ontime5	6495.2273730636	Sum of GTIs [s]
revision	3	Processing version of data	ontime6	2469.8764313161	Sum of GTIs [s]
			ontime7	6015.6078030467	Sum of GTIs [s]
			ontime8	2502.0805007219	Sum of GTIs [s]
			ontime9	2450.2241100669	Sum of GTIs [s]
			l1events	1548939	Number of level 1 events

### 2.1.4 Events

	ccd 4	ccd 5	ccd 6	ccd 7	ccd 8	ccd 9		ccd 4	ccd 5	ccd 6	ccd 7	ccd 8	ccd 9
level 1 events	160491	415096	183148	426401	187609	176194	grade 0 events	79548	87432	89258	99950	91356	85804
rejected events	20914	50624	20434	35365	23394	21201		49%	21%	48%	23%	48%	48%
rejected %	13%	12%	11%	8%	12%	12%	grade 1 events	423	283	455	268	472	432
								0%	0%	0%	0%	0%	0%
							grade 2 events	24692	131959	28207	87588	29190	27511
								15%	31%	15%	20%	15%	15%
							grade 3 events	8741	23470	10075	40572	10272	9772
								5%	5%	5%	9%	5%	5%
							grade 4 events	8650	23449	10109	39967	10337	9501
								5%	5%	5%	9%	5%	5%
							grade 5 events	1263	9167	1553	6881	1664	1491
								0%	2%	0%	1%	0%	0%
							grade 6 events	18915	100870	25890	125959	24089	23432
								11%	24%	14%	29%	12%	13%
							grade 7 events	18259	38466	17601	25216	20229	18251
								11%	9%	9%	5%	10%	10%

## 2.2 Compared Parameters

Parameter	Planned	Actual
Instrument	ACIS	ACIS
Detector	ACIS-456789	ACIS-456789
Grating	NONE	NONE
Data mode	FAINT	FAINT
Observation mode	SECONDARY	SECONDARY
[deg] Pointing RA	0	160.0001596924401
[deg] Pointing Dec	0	-20.02865671830332
[deg] Pointing Roll	0.0	237.6090108231111
[mm] SIM focus pos	-0.684267	-0.6828225247311905
[mm] SIM defocus	0	0.8505141146731063
[mm] SIM translation stage pos	-190.132523	250.466033080201
[mm] SIM translation stage offset	0	-0.01005468664627074
[s] Observation start time (MET)	110139348.60507	110139347.83662
Observation start date	2001-06-28T18:15:49	2001-06-28T18:15:47
[s] Observation end time (MET)	110161742.805944	110161742.03749
Observation end date	2001-06-29T00:29:03	2001-06-29T00:29:02
Read mode	TIMED	TIMED

Parameter	Planned	Actual
Obspar format version number	7	7
Obspar file type	PREDICTED	ACTUAL
Obspar update status	NONE	UPDATED
On-chip summing requested	N	N
Subarray requested	NONE	NONE
Alternating exposures requested	N	N
[s] Primary exposure time	3.2	3.2

## 2.3 Star Slots

## 2.4 FID Slots

## A Summary

### A.1 Status

V&V Scientist	Beth Sundheim
V&V Date (YYYY-MM-DD)	2012.09.21
V&V Edition	1
V&V Disposition and Status	OK
V&V Charge Time	6.0156078030467

### A.2 Comments