

V&V Reference Report

L2 ASCDS Version : 8.4.5

Observation 61518 - L2 Version 3
Chandra X-Ray Center

L2 Processing Date : Sep 21 2012

Contents

1	Front	2
2	OBI	3
2.1	OBI	3
2.1.1	Images	3
2.1.2	Bias	3
2.1.3	Parameters	4
2.1.4	Events	4
2.2	Compared Parameters	5
2.3	Star Slots	6
2.4	FID Slots	6
A	Summary	7
A.1	Status	7
A.2	Comments	7

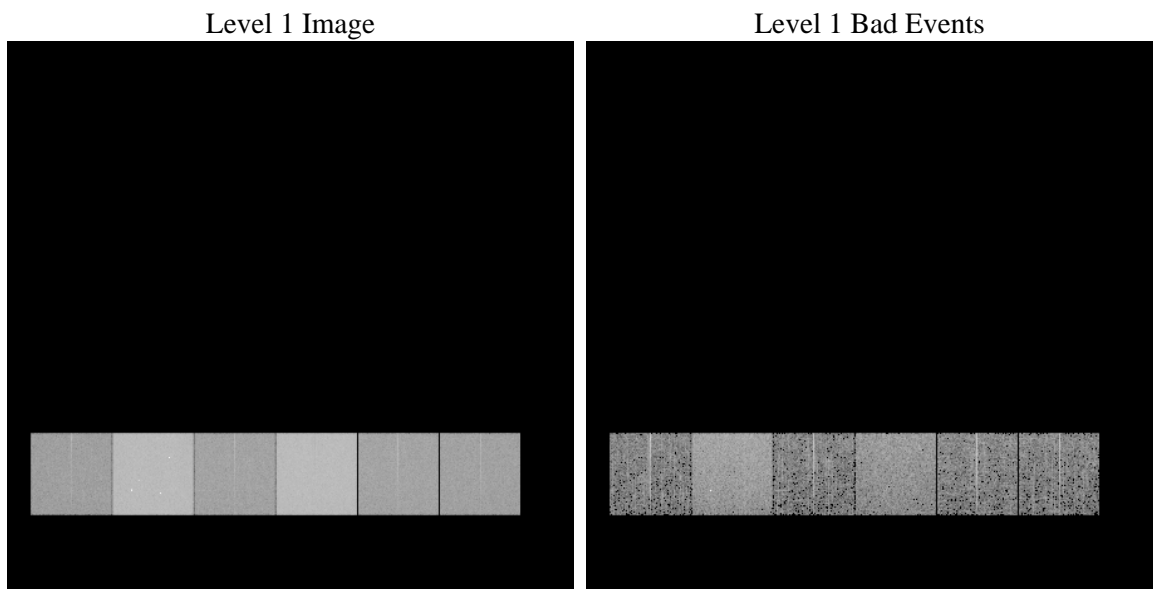
1 Front

seq_num	 	Sequence number
obs_id	61518	Observation id
title	ACIS-456789 diagnostics	Proposal title
observer	CHANDRA engineering request/realtime commanding	Principal investig
object	 	Source name
dtcycle	0	
cycle	P	events from which exps? Prim/Second/Both
ra_targ	0.0	Observer's specified target RA [deg]
dec_targ	0.0	Observer's specified target Dec [deg]
ra_nom	341.96583147226	Nominal RA [deg]
dec_nom	33.000582814185	Nominal Dec [deg]
roll_nom	146.09492787219	Nominal Roll [deg]
revision	3	Processing version of data
ontime	5671.5460105985	Sum of GTIs [s]
livetime	5599.7294800173	Livetime [s]
ontime4	2122.6508689523	Sum of GTIs [s]
ontime5	6105.4181233943	Sum of GTIs [s]
ontime6	2310.6307500005	Sum of GTIs [s]
ontime7	5671.5460105985	Sum of GTIs [s]
ontime8	2381.9339388013	Sum of GTIs [s]
ontime9	2249.0513688773	Sum of GTIs [s]
l2events	1219934	Number of level 2 events

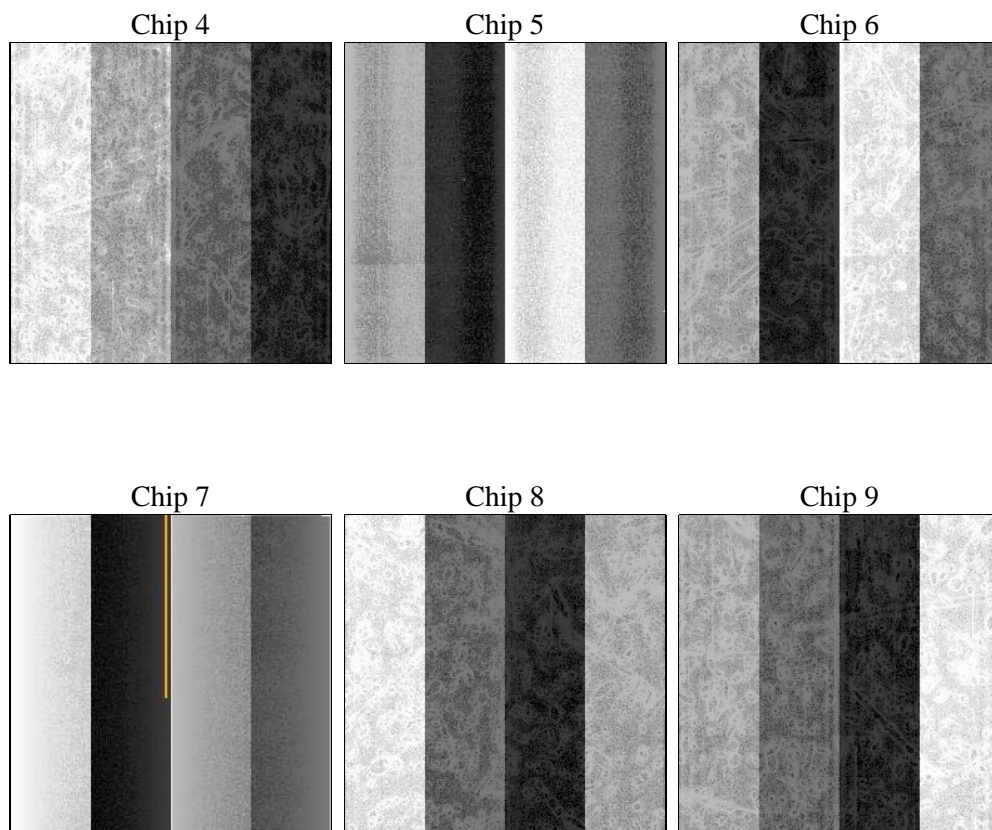
2 OBI

2.1 OBI

2.1.1 Images



2.1.2 Bias



2.1.3 Parameters

obi_num	0	Obi number	sched_exp_time	0.0	[s] Scheduled observation exposure time
ascdsver	8.4.5	Processing system revision	ontime	5671.5460105985	Sum of GTIs [s]
caldsver	4.5.1.1	 	ontime4	2122.6508689523	Sum of GTIs [s]
date	2012-09-21T16:06:59	Date and time of file creation	ontime5	6105.4181233943	Sum of GTIs [s]
revision	3	Processing version of data	ontime6	2310.6307500005	Sum of GTIs [s]
			ontime7	5671.5460105985	Sum of GTIs [s]
			ontime8	2381.9339388013	Sum of GTIs [s]
			ontime9	2249.0513688773	Sum of GTIs [s]
			l1events	1427474	Number of level 1 events

2.1.4 Events

	ccd 4	ccd 5	ccd 6	ccd 7	ccd 8	ccd 9		ccd 4	ccd 5	ccd 6	ccd 7	ccd 8	ccd 9
level 1 events	146559	384658	168986	393648	174999	158624	grade 0 events	71682	84864	81664	93047	85000	76196
rejected events	19759	44327	19123	30942	21124	18932		48%	22%	48%	23%	48%	48%
rejected %	13%	11%	11%	7%	12%	11%	grade 1 events	444	250	416	260	456	391
								0%	0%	0%	0%	0%	0%
							grade 2 events	22540	119634	26166	80864	27071	25094
								15%	31%	15%	20%	15%	15%
							grade 3 events	7797	22343	9314	37059	9718	8668
								5%	5%	5%	9%	5%	5%
							grade 4 events	7846	22014	9315	36739	9520	8738
								5%	5%	5%	9%	5%	5%
							grade 5 events	1265	8599	1465	6470	1533	1427
								0%	2%	0%	1%	0%	0%
							grade 6 events	17154	91476	23626	115213	22789	21209
								11%	23%	13%	29%	13%	13%
							grade 7 events	17831	35478	17020	23996	18912	16901
								12%	9%	10%	6%	10%	10%

2.2 Compared Parameters

Parameter	Planned	Actual	Parameter	Planned	Actual
Instrument	ACIS	ACIS	Obspar format version number	7	7
Detector	ACIS-456789	ACIS-456789	Obspar file type	PREDICTED	ACTUAL
Grating	NONE	NONE	Obspar update status	NONE	UPDATED
Data mode	FAINT	FAINT	On-chip summing requested	N	N
Observation mode	SECONDARY	SECONDARY	Subarray requested	NONE	NONE
[deg] Pointing RA	0	341.9658314722556	Alternating exposures requested	N	N
[deg] Pointing Dec	0	33.00058281418521	[s] Primary exposure time	0.000000	3.2
[deg] Pointing Roll	0.0	146.0949278721919			
[mm] SIM focus pos	-0.684267	-0.6828225247311905			
[mm] SIM defocus	0	0.8505141146731063			
[mm] SIM translation stage pos	-190.132523	250.466033080201			
[mm] SIM translation stage offset	0	-0.01005468664627074			
[s] Observation start time (MET)	113078413.22	113078412.45171			
Observation start date	2001-08-01T18:40:13	2001-08-01T18:40:12			
[s] Observation end time (MET)	113112535.472	113112534.70305			
Observation end date	2001-08-02T04:08:55	2001-08-02T04:08:54			
Read mode	TIMED	TIMED			

2.3 Star Slots

2.4 FID Slots

A Summary

A.1 Status

V&V Scientist	Jen Lauer
V&V Date (YYYY-MM-DD)	2012.09.25
V&V Edition	1
V&V Disposition and Status	OK
V&V Charge Time	5.6715460105985

A.2 Comments