

V&V Reference Report

L2 ASCDS Version : 7.6.9

Observation 61508 - L2 Version 001
Chandra X-Ray Center

L2 Processing Date : Dec 19 2006

Contents

1	Front	2
2	OBI	3
2.1	OBI	3
2.1.1	Images	3
2.1.2	Bias	3
2.1.3	Parameters	4
2.1.4	Events	4
2.2	Compared Parameters	5
2.3	Aspect	6
2.4	Star Slots	8
2.5	FID Slots	8
A	Summary	9
A.1	Status	9
A.2	Comments	9

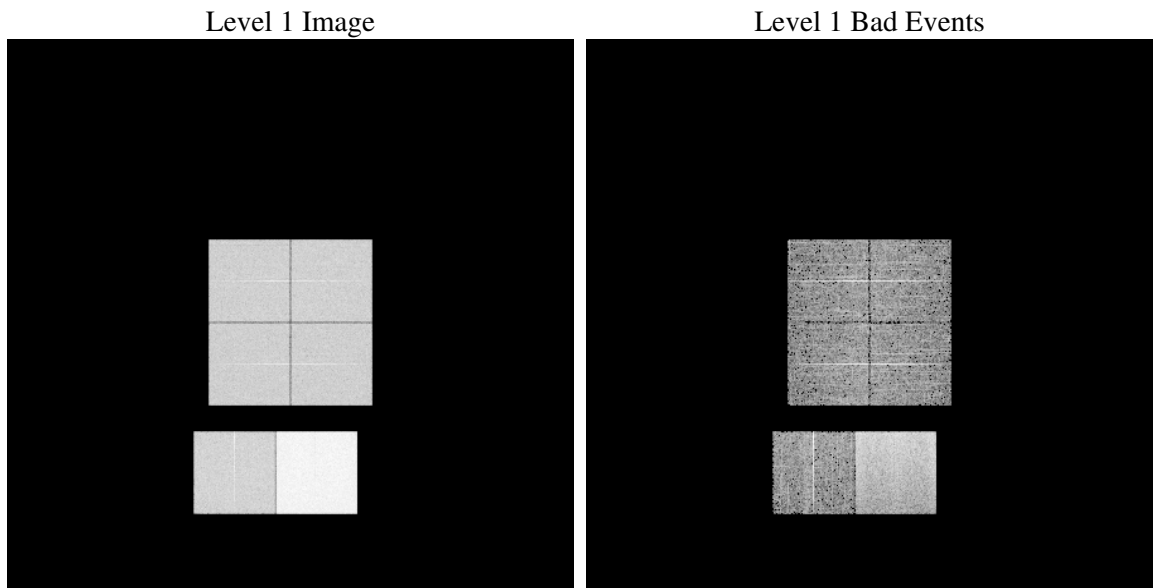
1 Front

seq_num	
obs_id	61508
title	ACIS-012367 diagnostics
observer	CHANDRA engineering request/realtime commanding
object	
dtcycle	0
cycle	P
ra_targ	0.0
dec_targ	0.0
ra_nom	9.9754210767423
dec_nom	8.015084291496
roll_nom	115.57378920982
revision	2
ontime	7627.0488756895
livetime	7530.4705903681
ontime0	2969.7580663413
ontime1	3002.1686955541
ontime2	2862.6508865803
ontime3	2846.2812973857
ontime6	3121.9739697129
ontime7	7627.0488756895
l2events	1306949

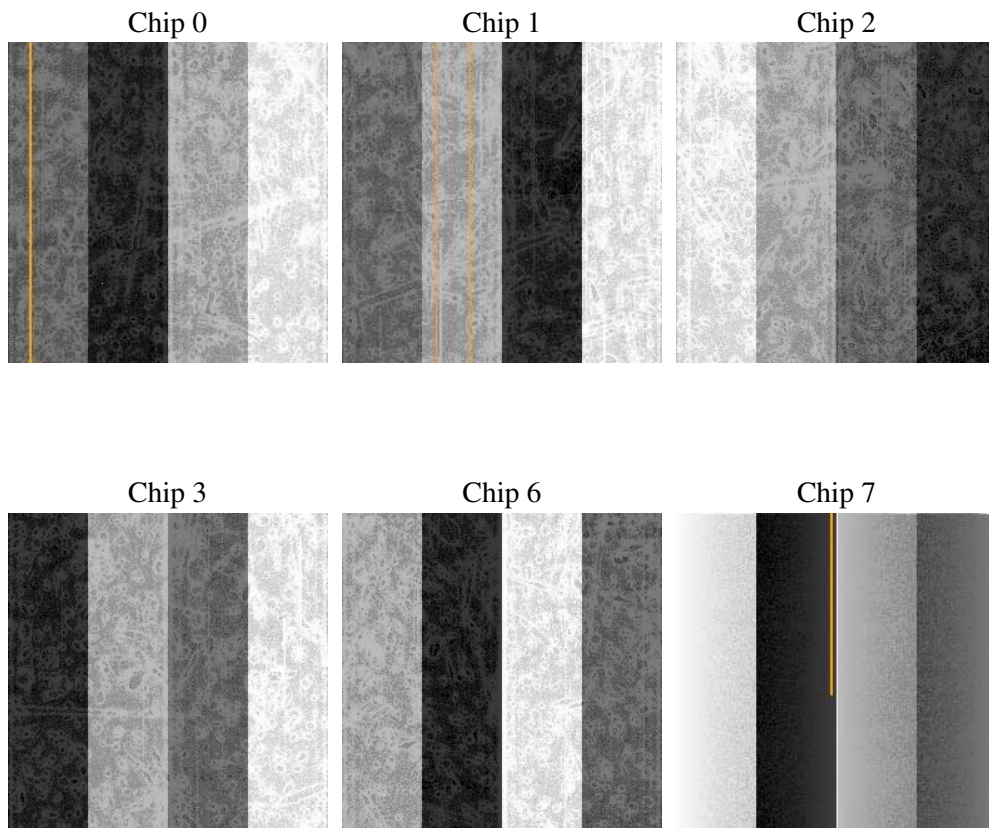
2 OBI

2.1 OBI

2.1.1 Images



2.1.2 Bias



2.1.3 Parameters

obi_num	0
ascdsver	7.6.9
caldsver	3.2.4
date	2006-12-19T18:10:39
revision	2

sched_exp_time	0.0
ontime	7632.5617938489
ontime0	2975.2709845006
ontime1	3007.6816137135
ontime2	2865.0769205093
ontime3	2848.871491313
ontime6	3124.3589636385
ontime7	7632.5617938489
l1events	1544457

2.1.4 Events

	ccd 0	ccd 1	ccd 2	ccd 3	ccd 6	ccd 7
level 1 events	202265	205221	198166	196856	222106	519843
rejected events	23311	23651	23759	23665	25848	62206
rejected %	11%	11%	11%	12%	11%	11%

	ccd 0	ccd 1	ccd 2	ccd 3	ccd 6	ccd 7
grade 0 events	98806	100272	96150	96320	106669	79161
	48%	48%	48%	48%	48%	15%
grade 1 events	487	507	481	472	510	183
	0%	0%	0%	0%	0%	0%
grade 2 events	31832	32509	31691	30899	34839	142167
	15%	15%	15%	15%	15%	27%
grade 3 events	11402	11440	11012	10804	11604	32938
	5%	5%	5%	5%	5%	6%
grade 4 events	11225	11383	10873	10824	11854	31818
	5%	5%	5%	5%	5%	6%
grade 5 events	1656	1695	1568	1599	1876	8259
	0%	0%	0%	0%	0%	1%
grade 6 events	26142	26524	24885	24560	31577	172124
	12%	12%	12%	12%	14%	33%
grade 7 events	20715	20891	21506	21378	23177	53193
	10%	10%	10%	10%	10%	10%

2.2 Compared Parameters

Parameter	Planned	Actual	Parameter	Planned	Actual
Instrument	ACIS	ACIS	Obspar format version number	6	6
Detector	ACIS-012367	ACIS-012367	Obspar file type	PREDICTED	ACTUAL
Grating	NONE	NONE	Obspar update status	NONE	UPDATED
Data mode	FAINT	FAINT	On-chip summing requested	N	N
Observation mode	SECONDARY	SECONDARY	Subarray requested	NONE	NONE
Pointing RA	0	9.975421076742251	Alternating exposures requested	N	N
Pointing Dec	0	8.015084291495976	Primary exposure time	3.2	3.2
Pointing Roll	0.0	115.5737892098223			
SIM focus pos (mm)	-0.782348	-0.6828225247311905			
SIM defocus (mm)	0	0.8505141146731063			
SIM translation stage pos (mm)	-233.592463	250.466033080201			
SIM translation stage offset (mm)	0	-0.01005468664627074			
Observation start time	113798900.098536	113798899.33007			
Observation start date	2001-08-10T02:48:20	2001-08-10T02:48:19			
Observation end time	113821987.199445	113821986.43098			
Observation end date	2001-08-10T09:13:07	2001-08-10T09:13:06			
Read mode	TIMED	TIMED			

2.3 Aspect

2.4 Star Slots

2.5 FID Slots

A Summary

A.1 Status

V&V Scientist	Beth Sundheim
V&V Date (YYYY-MM-DD)	2006.12.19
V&V Edition	1
V&V Disposition and Status	OK
V&V Charge Time	7.62704887

A.2 Comments

Focal plane temperature is warmer than -118.7 C degrees during the entire observation. This temperature is the upper limit of the verified ACIS calibration for the front-illuminated chips.