

V&V Reference Report

L2 ASCDS Version : 7.6.7.1

Observation 6148 - L2 Version 002
Chandra X-Ray Center

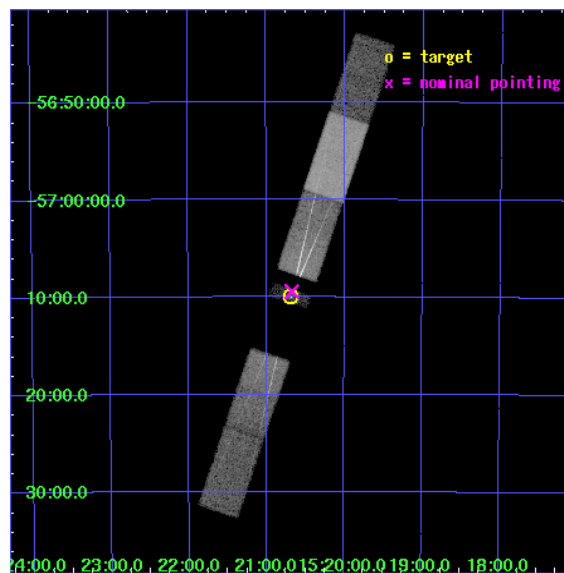
L2 Processing Date : Mar 16 2006

Contents

1	Front	2
2	OBI	3
2.1	OBI	3
2.1.1	Images	3
2.1.2	Bias	3
2.1.3	Parameters	4
2.1.4	Events	4
2.2	Compared Parameters	5
2.3	Aspect	6
2.4	Star Slots	9
2.4.1	Slot 3	9
2.4.2	Slot 4	10
2.4.3	Slot 5	11
2.4.4	Slot 6	12
2.4.5	Slot 7	13
2.5	FID Slots	14
2.5.1	Slot 0	14
2.5.2	Slot 1	15
2.5.3	Slot 2	16
3	Gratings	17
3.1	HEG Arm	17
3.2	MEG Arm	19
A	Summary	21
A.1	Status	21
A.2	Comments	21

1 Front

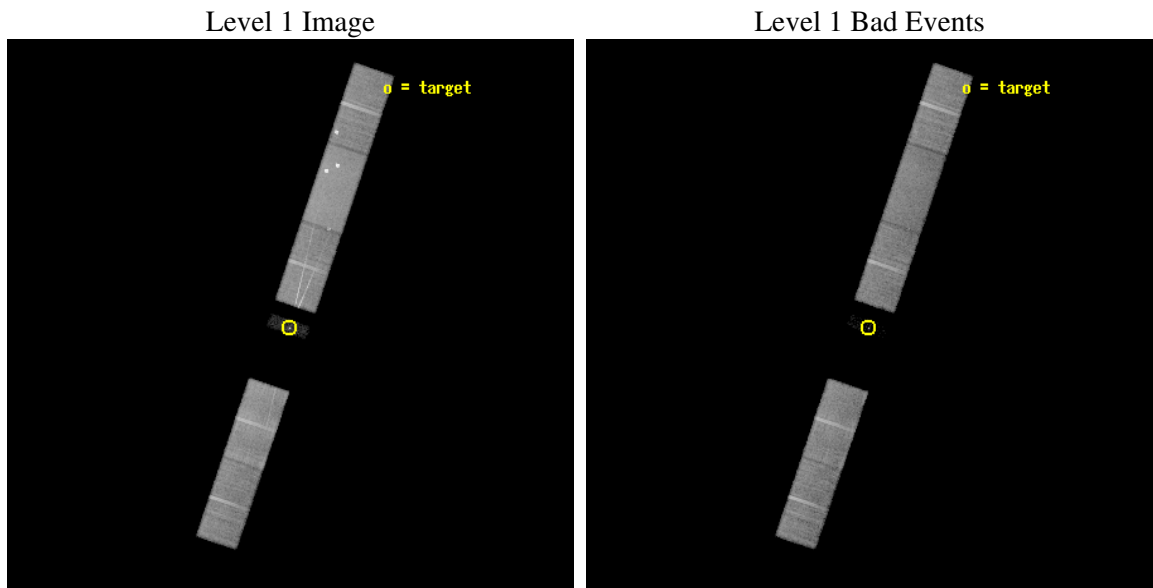
seq_num	400408
obs_id	6148
title	Accretion Disk Mapping using the P Cygni Line Profiles in Circinus X-1
observer	Dr. Norbert Schulz
object	Cir X-1
dtcycle	0
cycle	P
ra_targ	230.170833
dec_targ	-57.166667
ra_nom	230.168173107
dec_nom	-57.157102607817
roll_nom	108.67614659994
revision	2
ontime	25068.199824214
livetime	24477.289264557
ontime4	25068.199824214
ontime5	25068.199824214
ontime6	25068.199824214
ontime7	25068.199824214
ontime8	25066.458833992
ontime9	25068.199824214
l2events	145366



2 OBI

2.1 OBI

2.1.1 Images

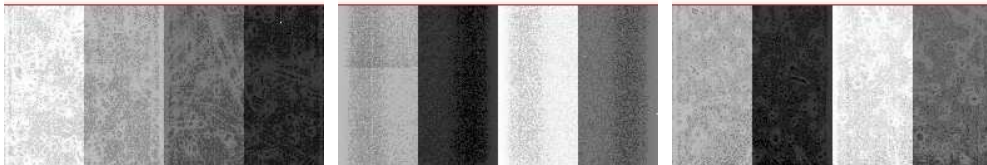


2.1.2 Bias

Chip 4

Chip 5

Chip 6



Chip 7

Chip 8

Chip 9



2.1.3 Parameters

obi_num	0
ascdsver	7.6.7.1
caldsver	3.2.1
date	2006-03-16T10:10:25
revision	2

sched_exp_time	25000.000000
ontime	25070.671499968
ontime4	25070.671499968
ontime5	25070.671499968
ontime6	25070.671499968
ontime7	25070.671499968
ontime8	25068.930509746
ontime9	25070.671499968
l1events	622601

2.1.4 Events

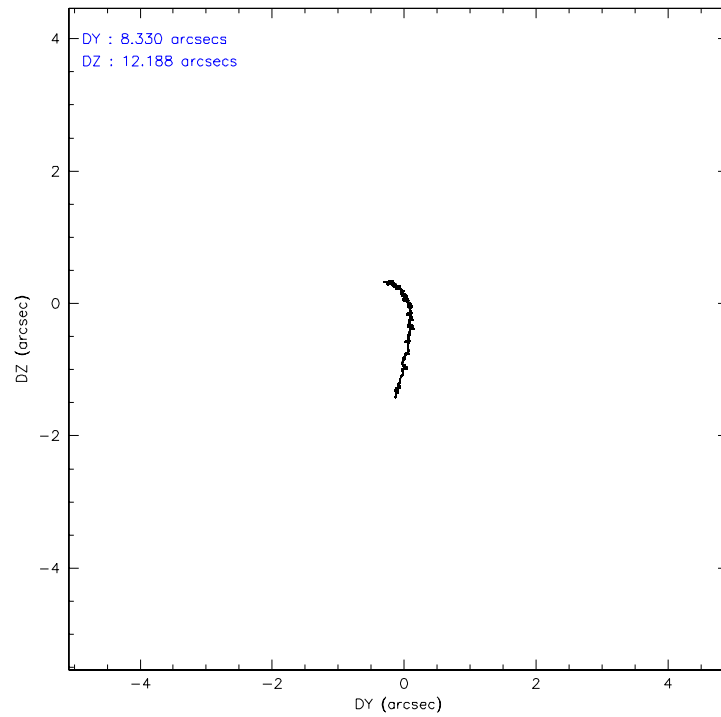
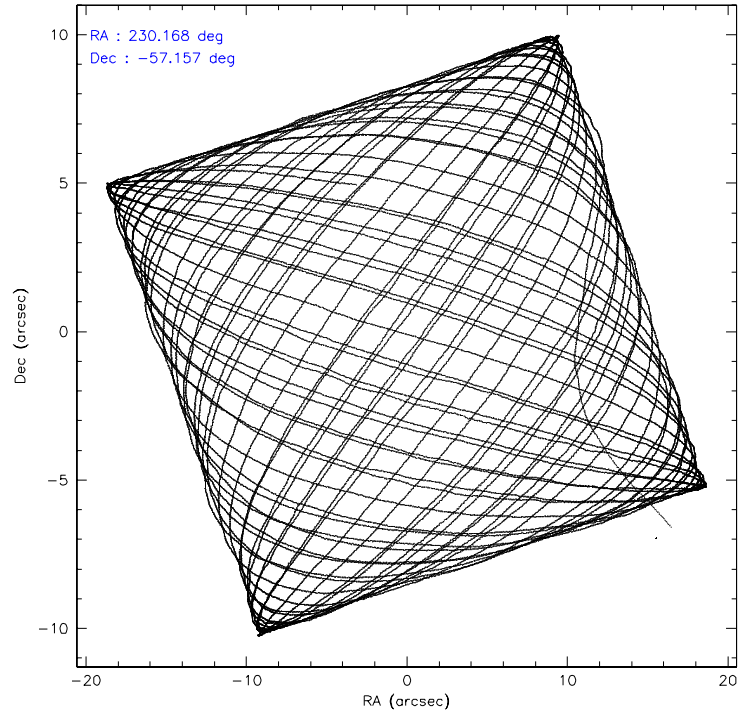
	ccd 4	ccd 5	ccd 6	ccd 7	ccd 8	ccd 9
level 1 events	112339	150934	125728	1907	136183	95510
rejected events	95344	76067	85558	663	97566	81553
rejected %	84%	50%	68%	34%	71%	85%

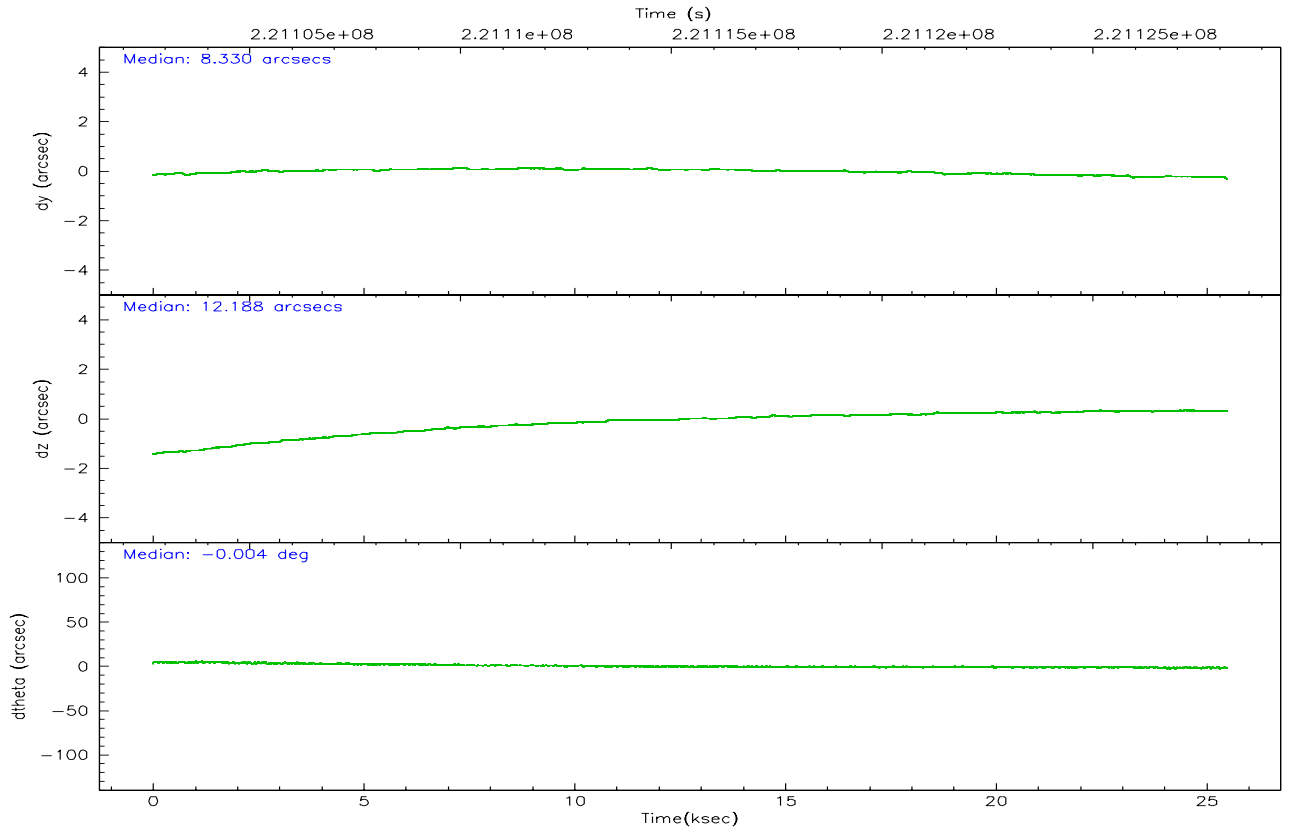
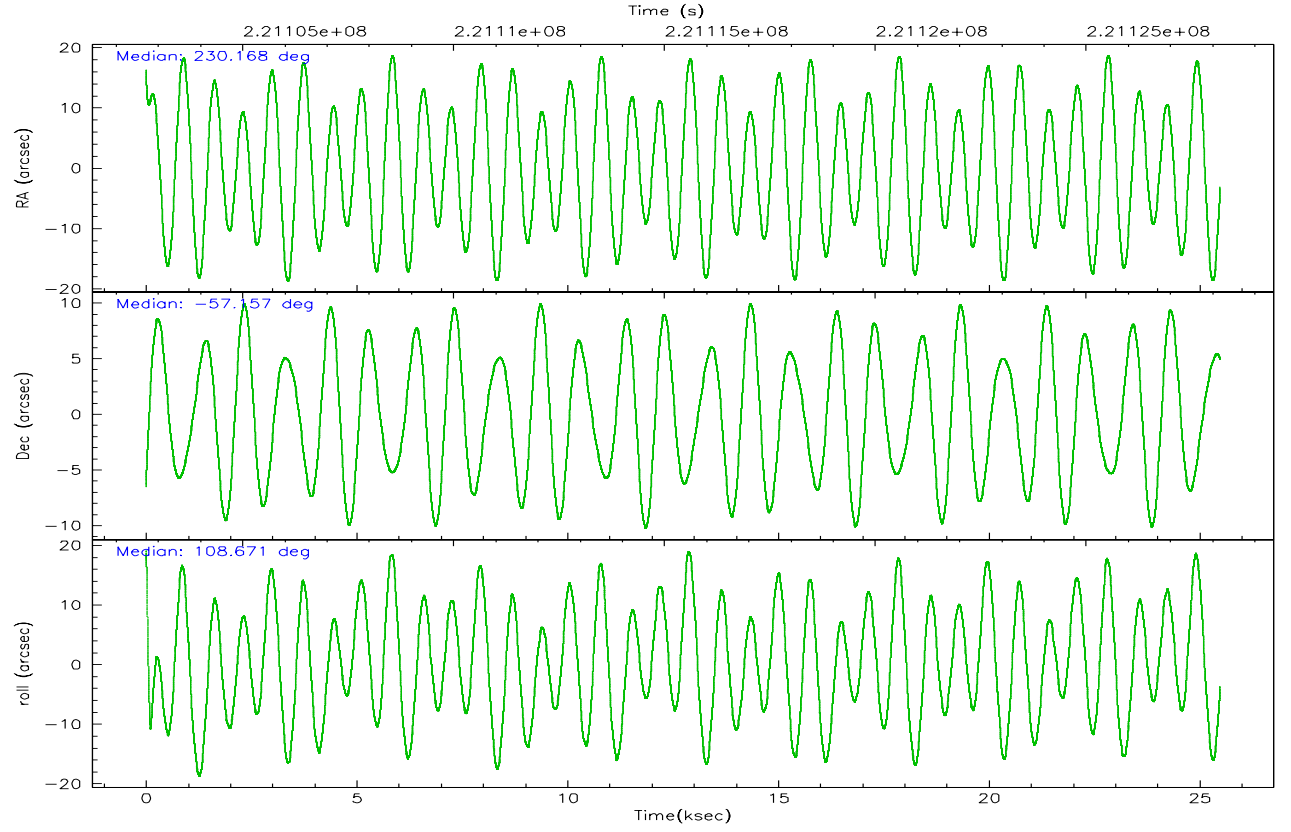
	ccd 4	ccd 5	ccd 6	ccd 7	ccd 8	ccd 9
grade 0 events	9566	14001	25838	146	16821	6317
	8%	9%	20%	7%	12%	6%
grade 1 events	86	269	86	8	75	50
	0%	0%	0%	0%	0%	0%
grade 2 events	2718	20553	5735	263	7221	2429
	2%	13%	4%	13%	5%	2%
grade 3 events	1418	2444	2551	112	3403	1458
	1%	1%	2%	5%	2%	1%
grade 4 events	1406	2385	2503	106	3288	1453
	1%	1%	1%	5%	2%	1%
grade 5 events	3833	7312	4132	158	5342	4313
	3%	4%	3%	8%	3%	4%
grade 6 events	1888	35489	3543	618	7885	2302
	1%	23%	2%	32%	5%	2%
grade 7 events	91424	68481	81340	496	92148	77188
	81%	45%	64%	26%	67%	80%

2.2 Compared Parameters

Parameter	Planned	Actual	Parameter	Planned	Actual
Instrument	ACIS	ACIS	Obspar format version number	6	6
Detector	ACIS-456789	ACIS-456789	Obspar file type	PREDICTED	ACTUAL
Grating	HETG	HETG	Obspar update status	NONE	UPDATED
Data mode	FAINT	FAINT	On-chip summing requested	N	N
Observation mode	POINTING	POINTING	Subarray requested	CUSTOM	1/2
Pointing RA	230.206337	230.1681731069986	Subarray start row	1	1
Pointing Dec	-57.174796	-57.15710260781658	Subarray row count	512	512
Pointing Roll	108.551569	108.6761465999413	Alternating exposures requested	N	N
SIM focus pos (mm)	-0.684267	-0.6828225247311905	Primary exposure time	0.000000	1.7
SIM defocus (mm)	0	0.001444936568705701			
SIM translation stage pos (mm)	-183.992523	-183.9875365069546			
SIM translation stage offset (mm)	-6.14	-6.144986076053243			
Phase constraints	Y	Y			
Phase period	16.536700	16.536700			
Phase epoch	52100.241000	52100.241000			
Phase start	0.950000	0.950000			
Phase end	0.050000	0.050000			
Phase start error	0.000000	0.000000			
Phase end error	0.000000	0.000000			
Observation start time	221103184.184000	221102092.82			
Observation start date	2005-01-03T01:32:00	2005-01-03T01:14:52			
Observation end time	221128184.184000	221128892.9837			
Observation end date	2005-01-03T08:28:40	2005-01-03T08:41:32			
Read mode	TIMED	TIMED			

2.3 Aspect



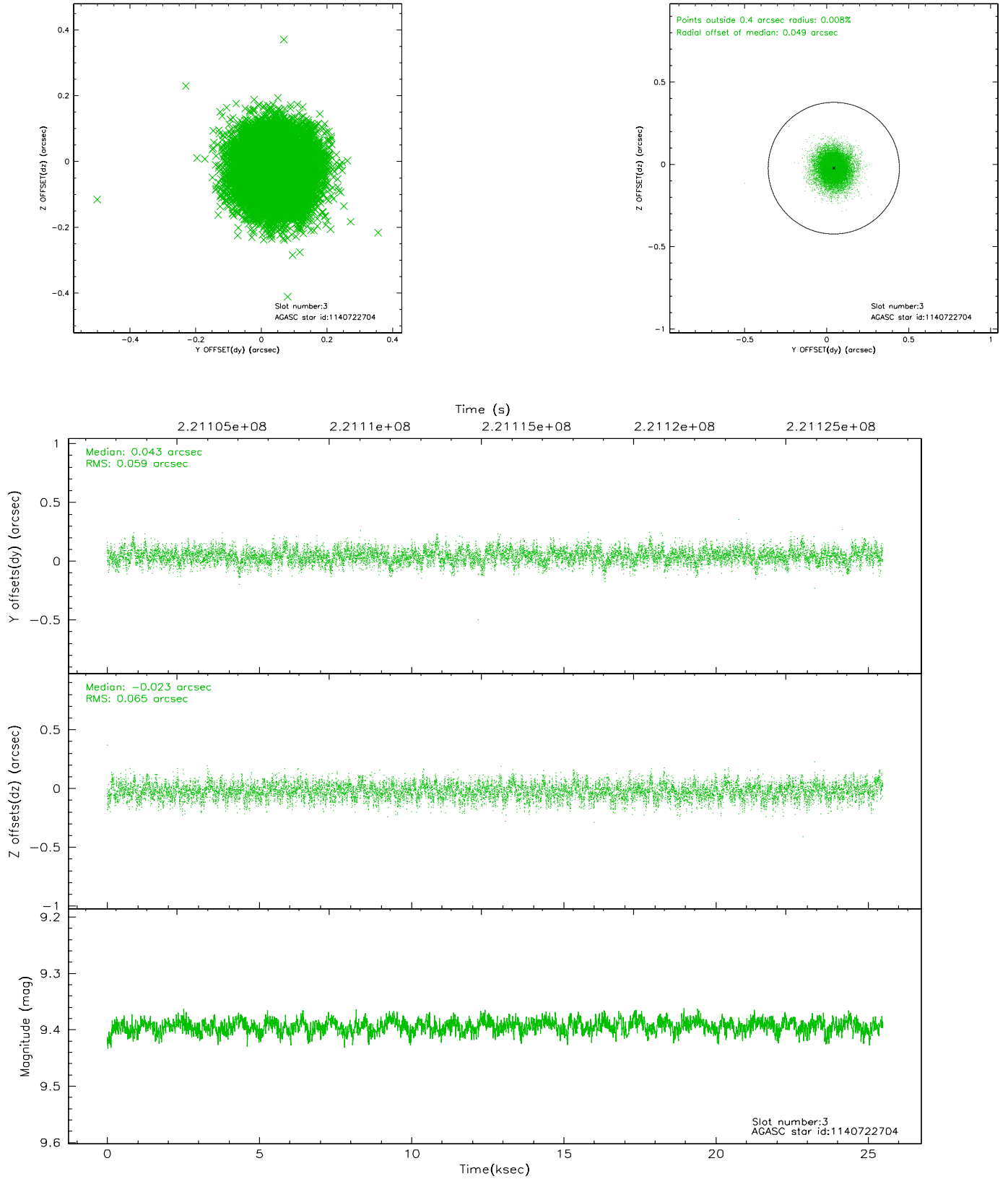


Slot Statistics

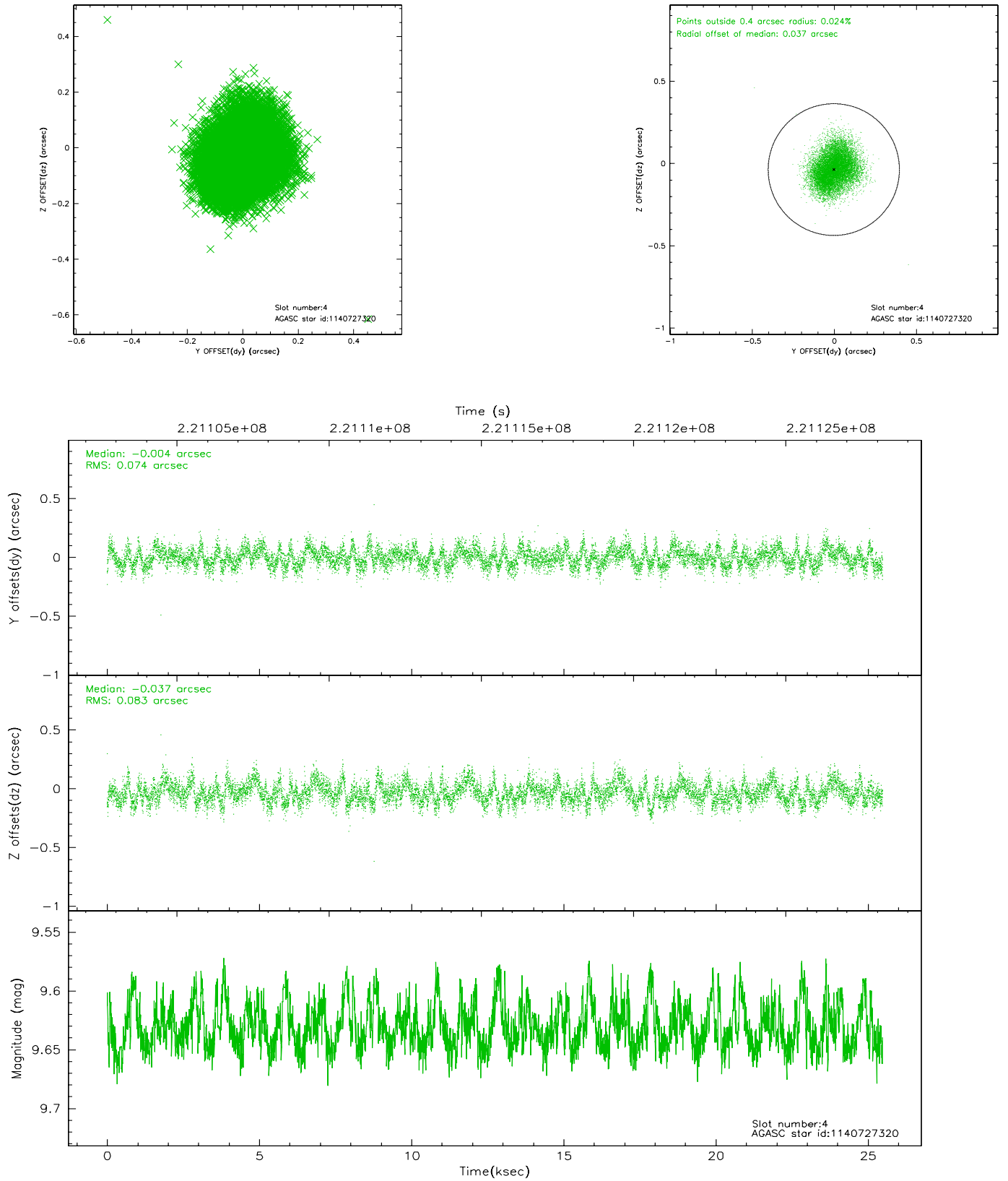
slot	status	id	mag	n_pts	med_dy	med_dz	dr1	dr2	ra	dec	mean_y	mean_z
0	FID	ACIS-S-2	7.08	6217	-0.055	-0.061	0.023	0.050	0.000000	0.000000	-760.70	-1860.04
1	FID	ACIS-S-4	7.18	6215	0.060	0.043	0.008	0.015	0.000000	0.000000	2152.63	48.41
2	FID	ACIS-S-5	7.23	6217	-0.038	0.025	0.024	0.046	0.000000	0.000000	-1813.39	42.18
3	GUIDE	1140722704	9.39	12417	0.043	-0.023	0.094	0.151	230.400167	-57.242184	-350.08	-280.27
4	GUIDE	1140727320	9.63	12416	-0.004	-0.037	0.120	0.187	230.452630	-57.076993	180.15	-568.27
5	GUIDE	1140726312	8.89	12424	-0.045	0.048	0.088	0.141	231.010622	-56.676215	1187.23	-2075.33
6	GUIDE	1140722800	9.17	12392	-0.018	0.008	0.080	0.133	231.057080	-56.699276	1078.80	-2135.12
7	GUIDE	1140726128	7.85	12429	0.025	0.003	0.068	0.109	231.437568	-57.014209	-239.51	-2464.39

2.4 Star Slots

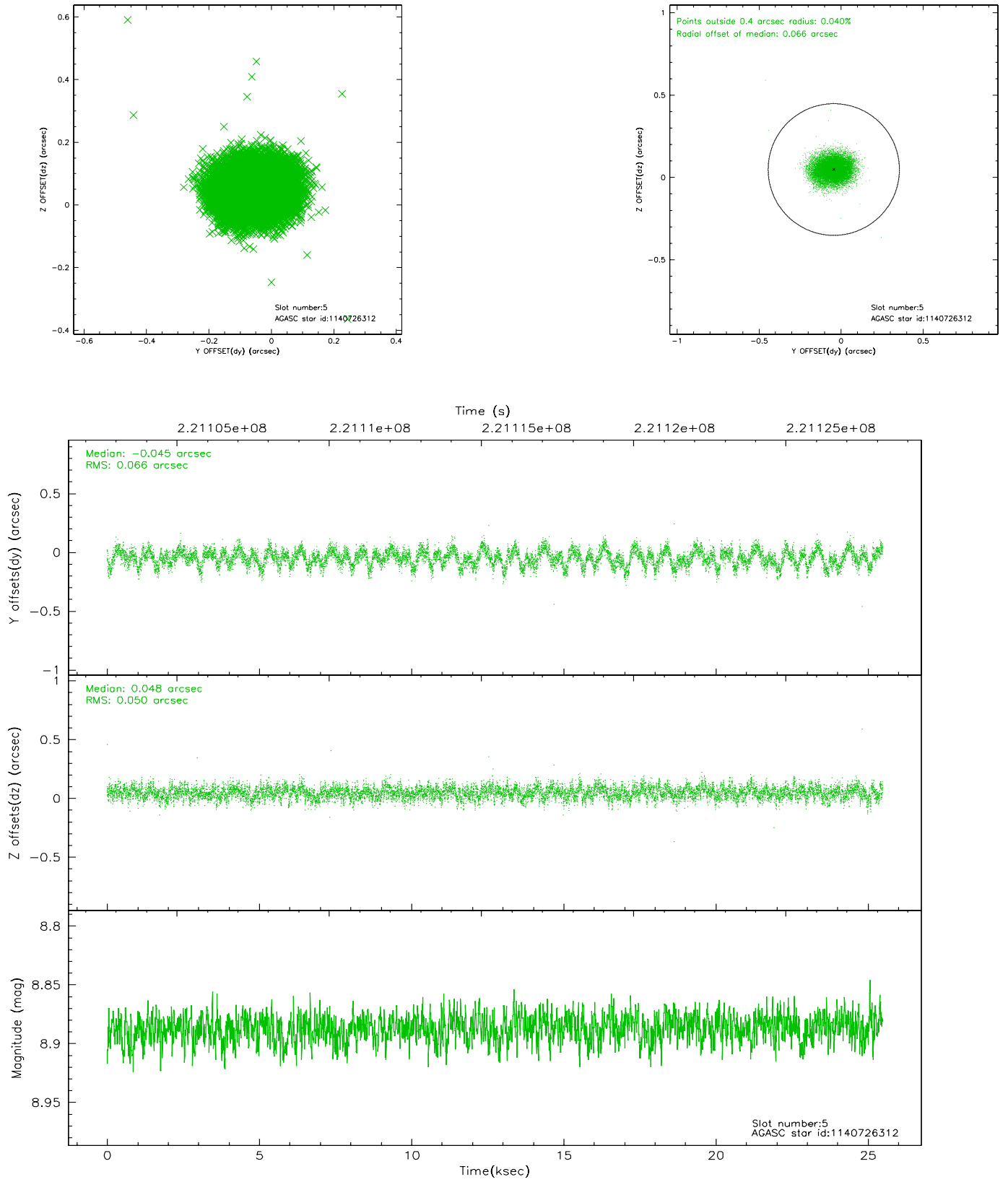
2.4.1 Slot 3



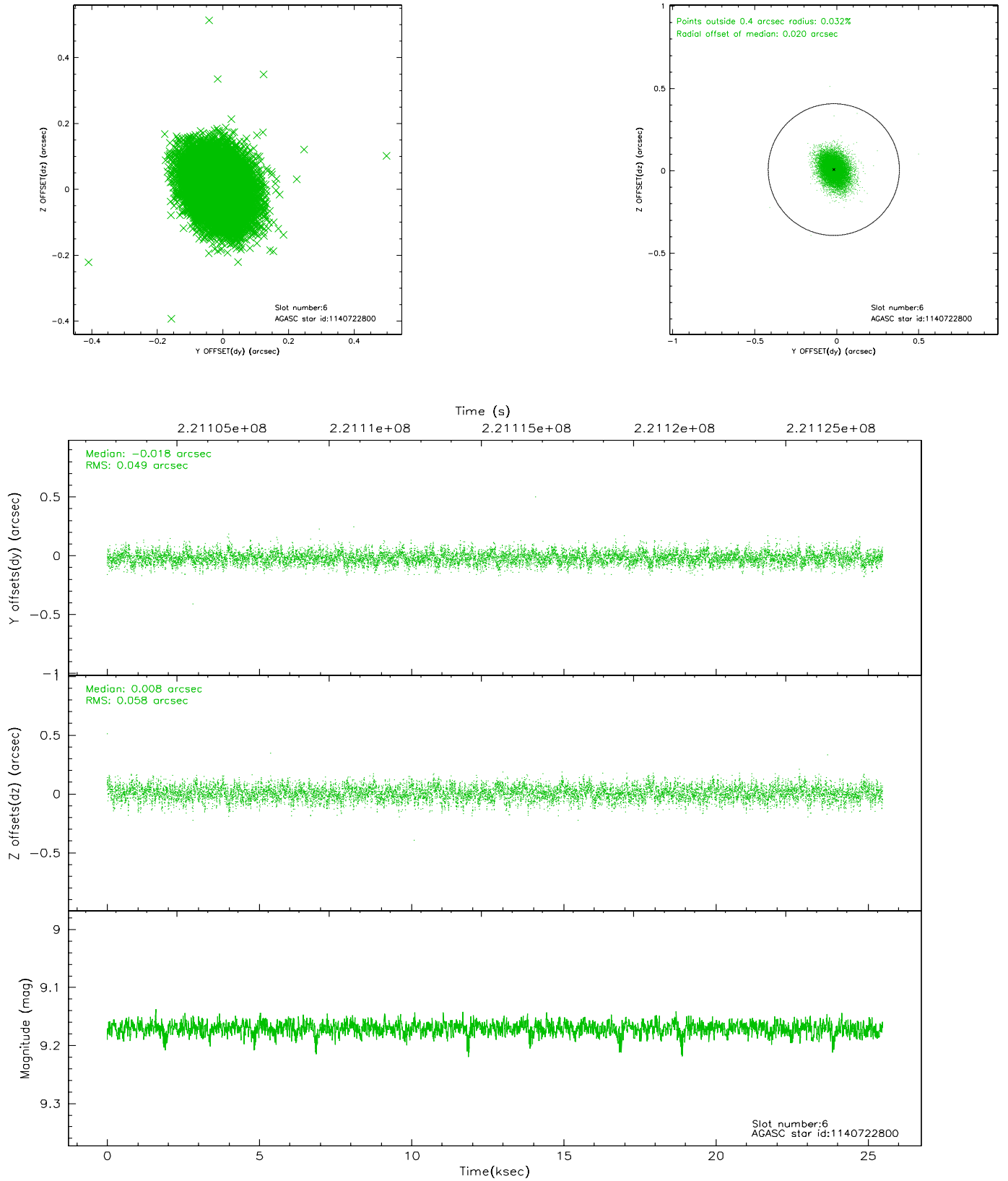
2.4.2 Slot 4



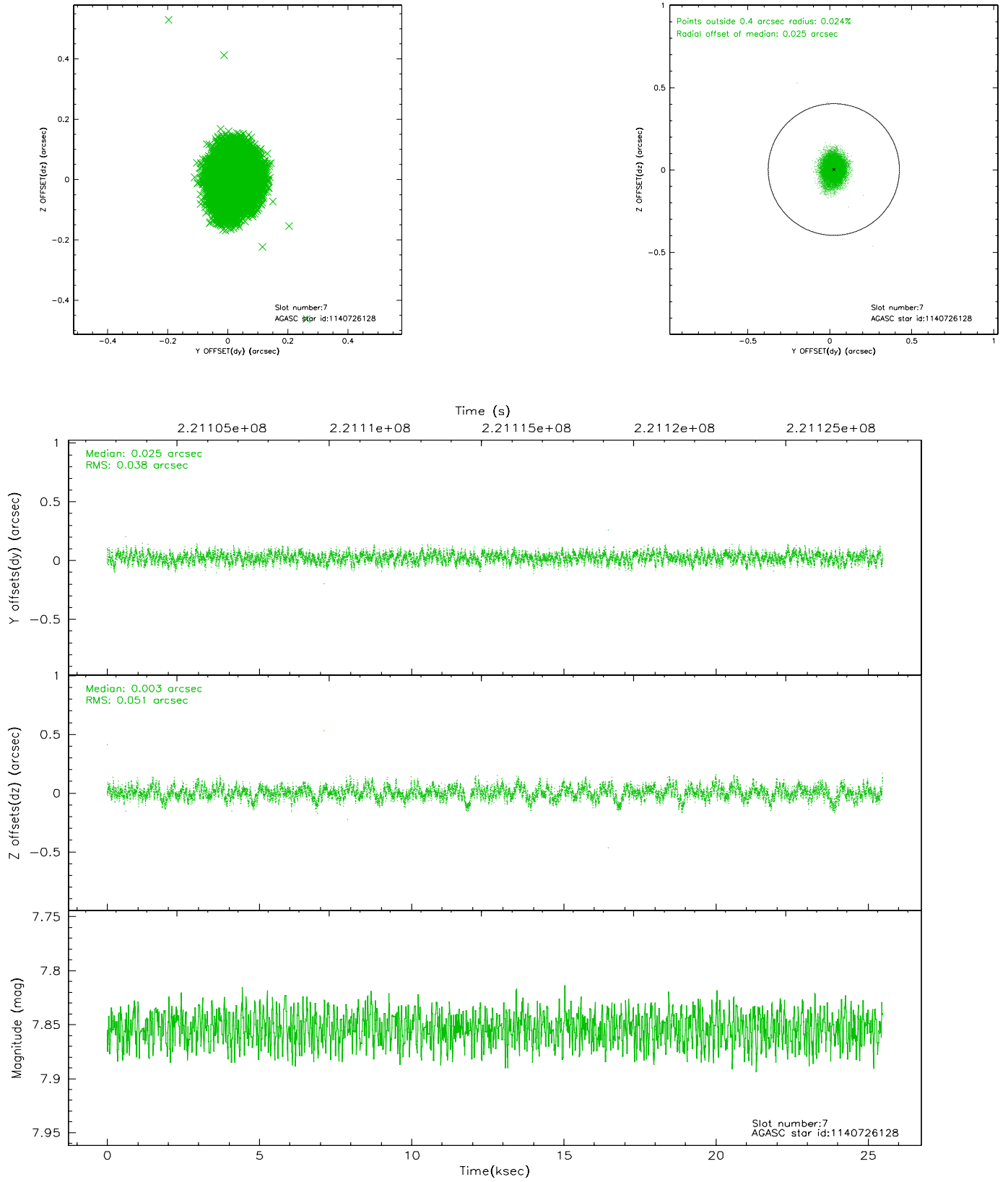
2.4.3 Slot 5



2.4.4 Slot 6

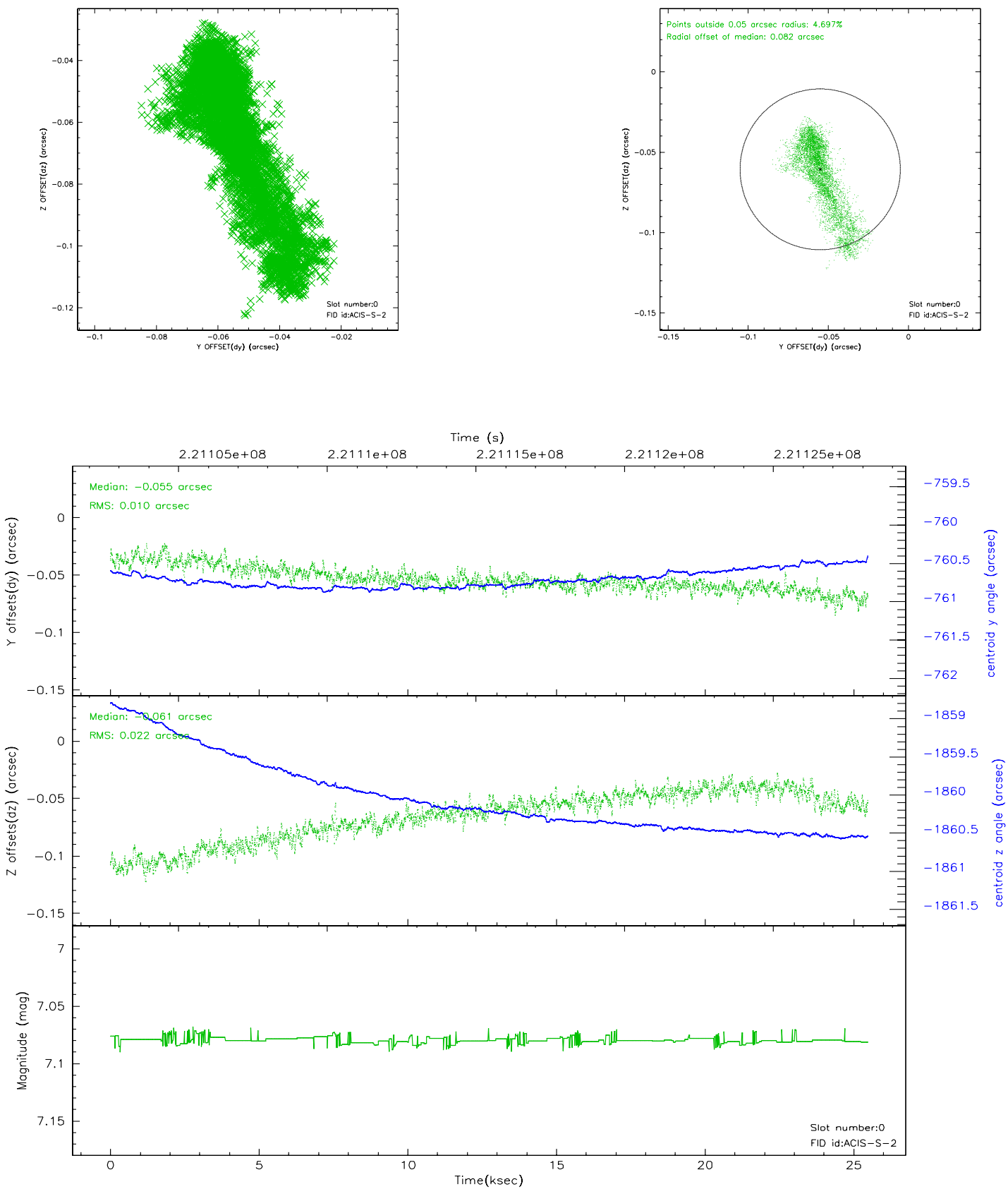


2.4.5 Slot 7

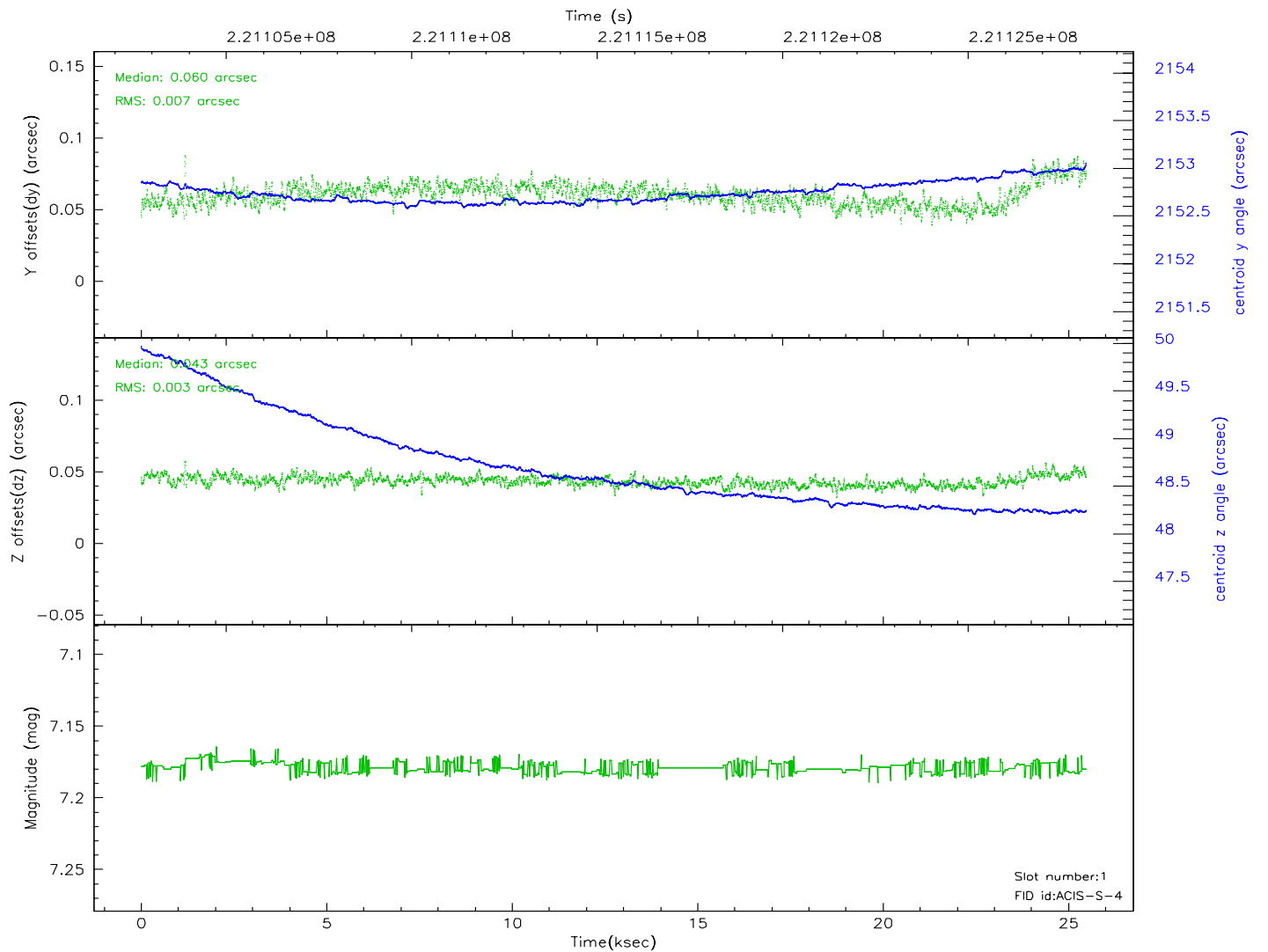
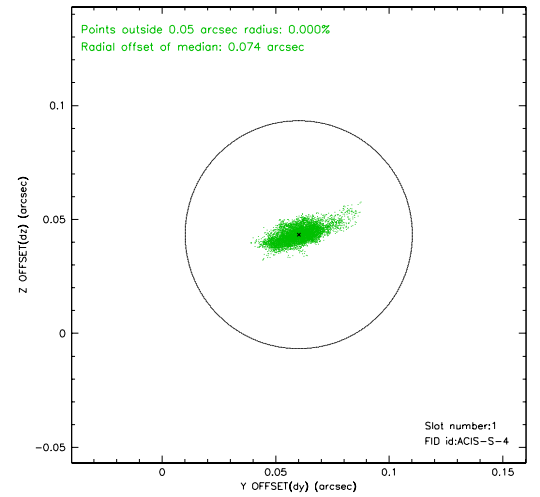
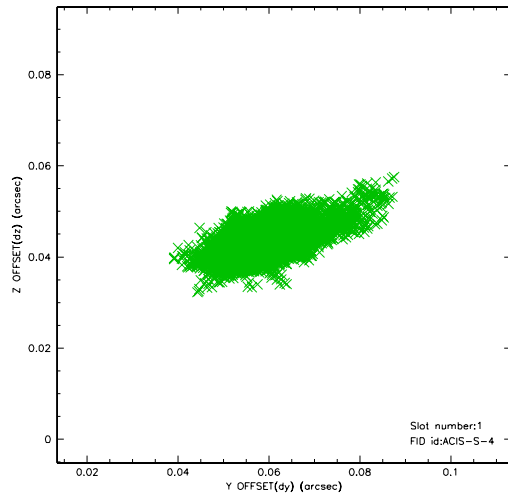


2.5 FID Slots

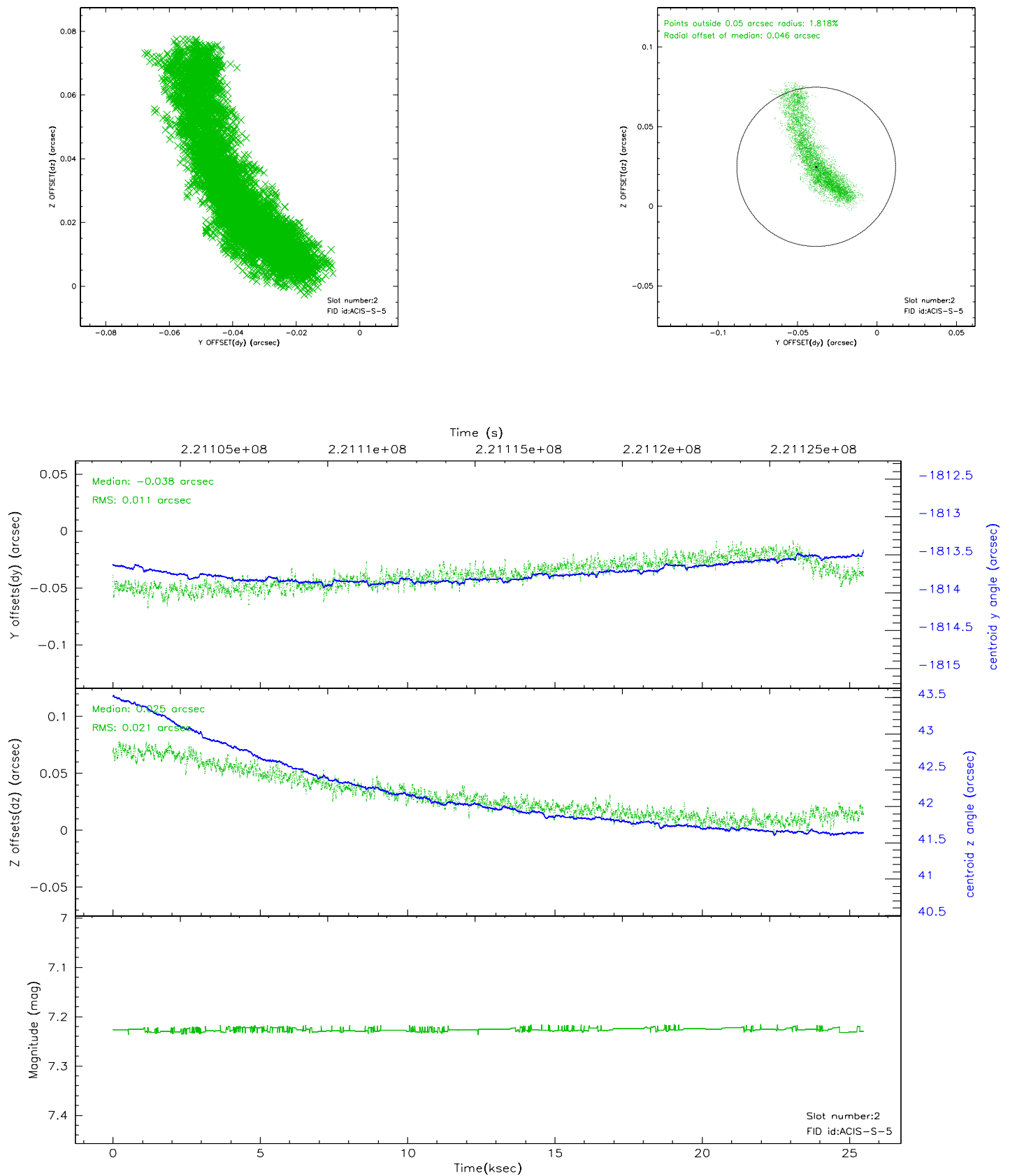
2.5.1 Slot 0



2.5.2 Slot 1



2.5.3 Slot 2

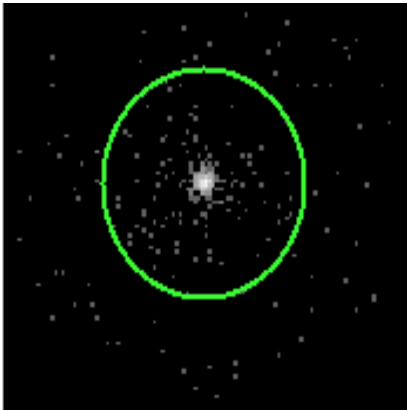


3 Gratings

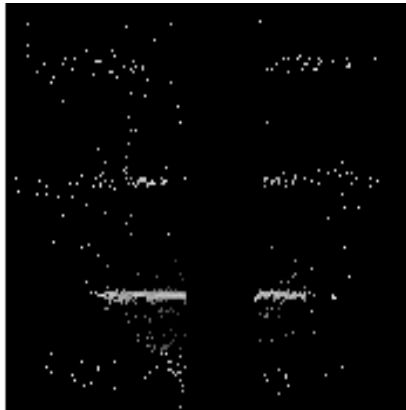
3.1 HEG Arm



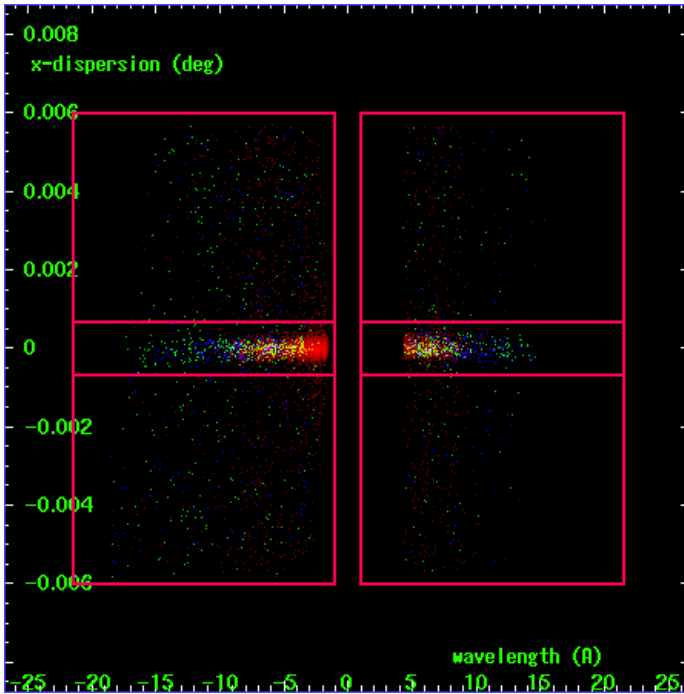
HEG Order Sort 123



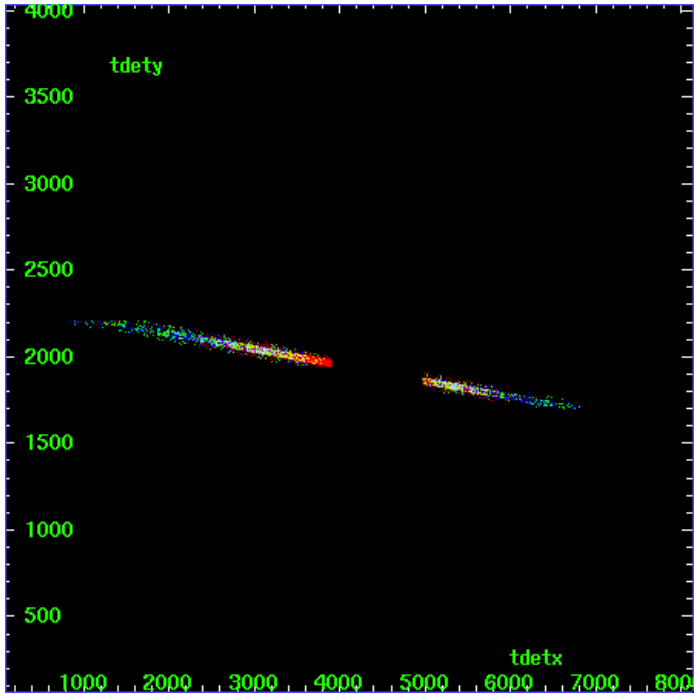
HEG Zero Order



HEG Order Sort ALL

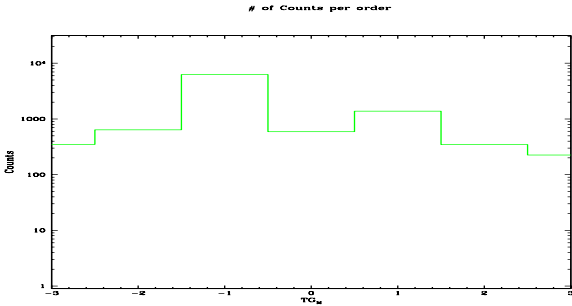


Spot Image HEG

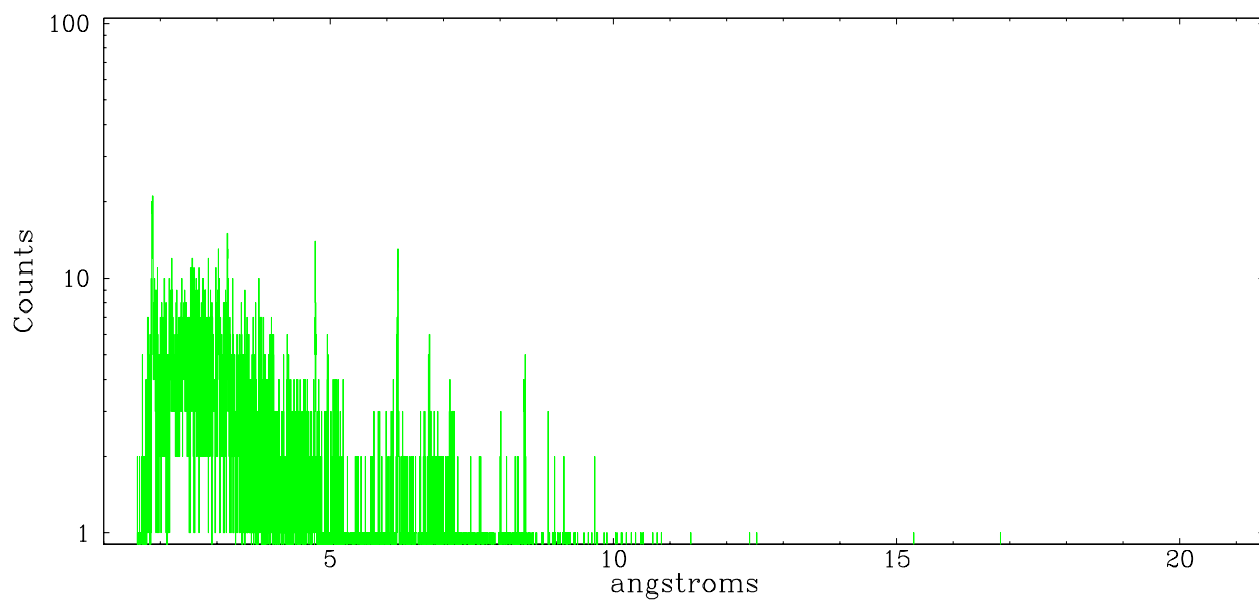


Full Detector HEG

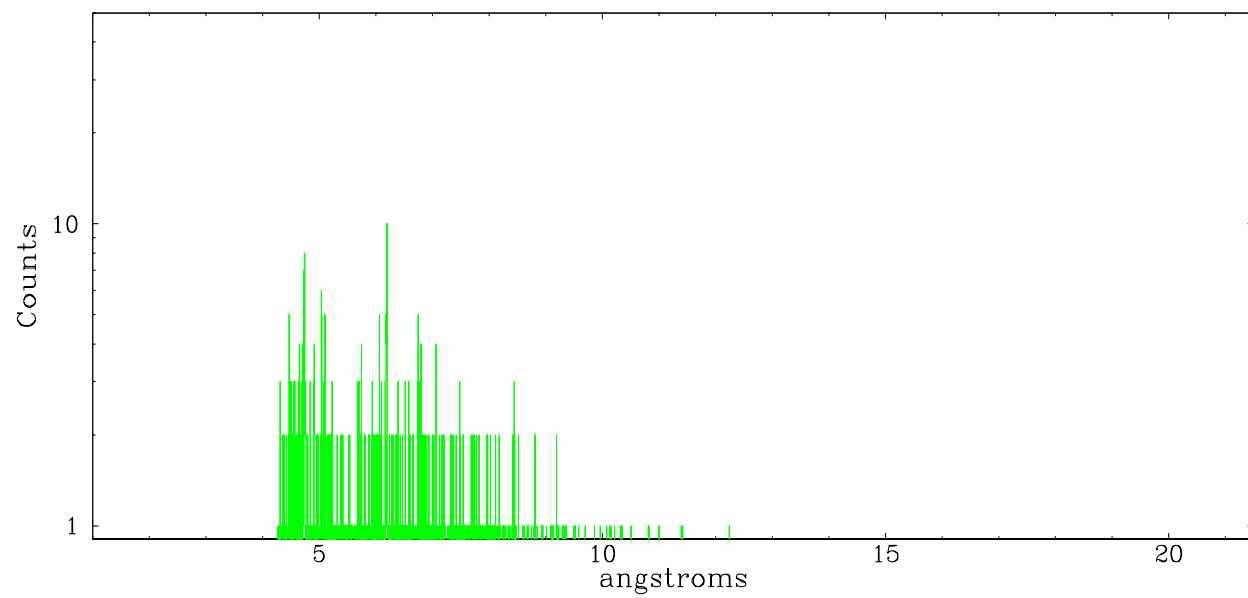
	order -3	order -2	order -1	order 0	order 1	order 2	order 3
Events	351	637	6265	589	1380	348	225



heg order -1



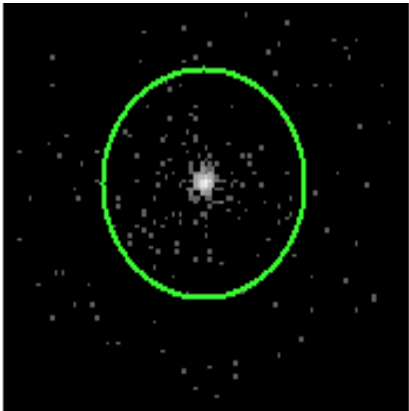
heg order +1



3.2 MEG Arm



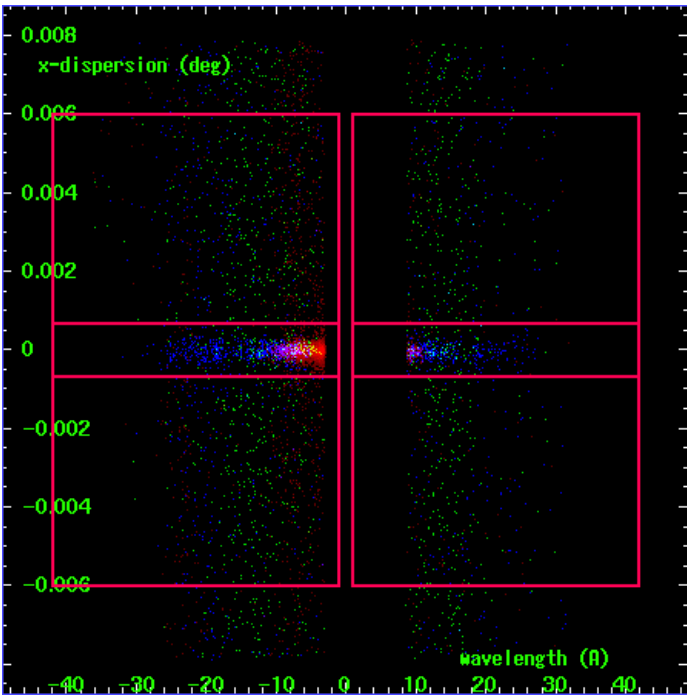
MEG Order Sort 123



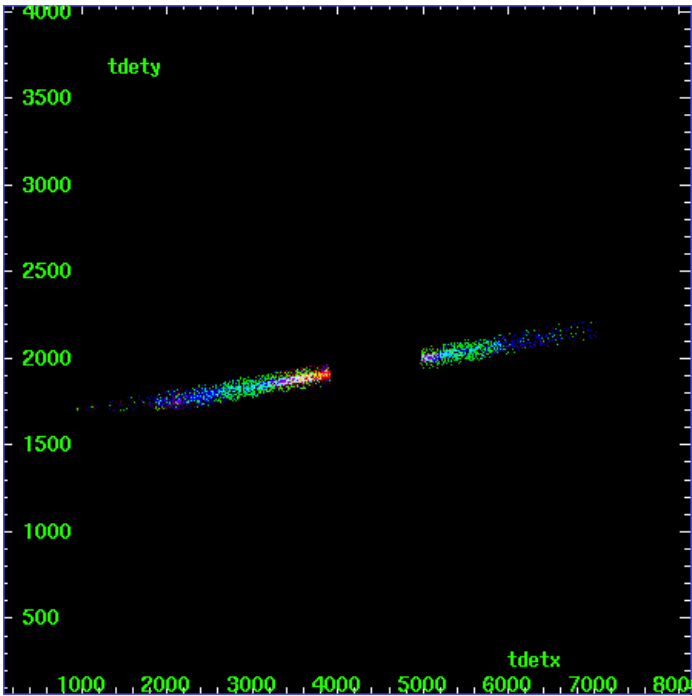
MEG Zero Order



MEG Order Sort ALL

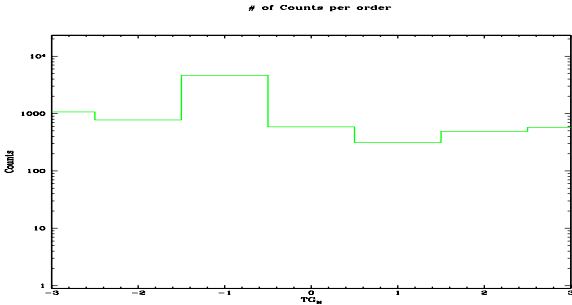


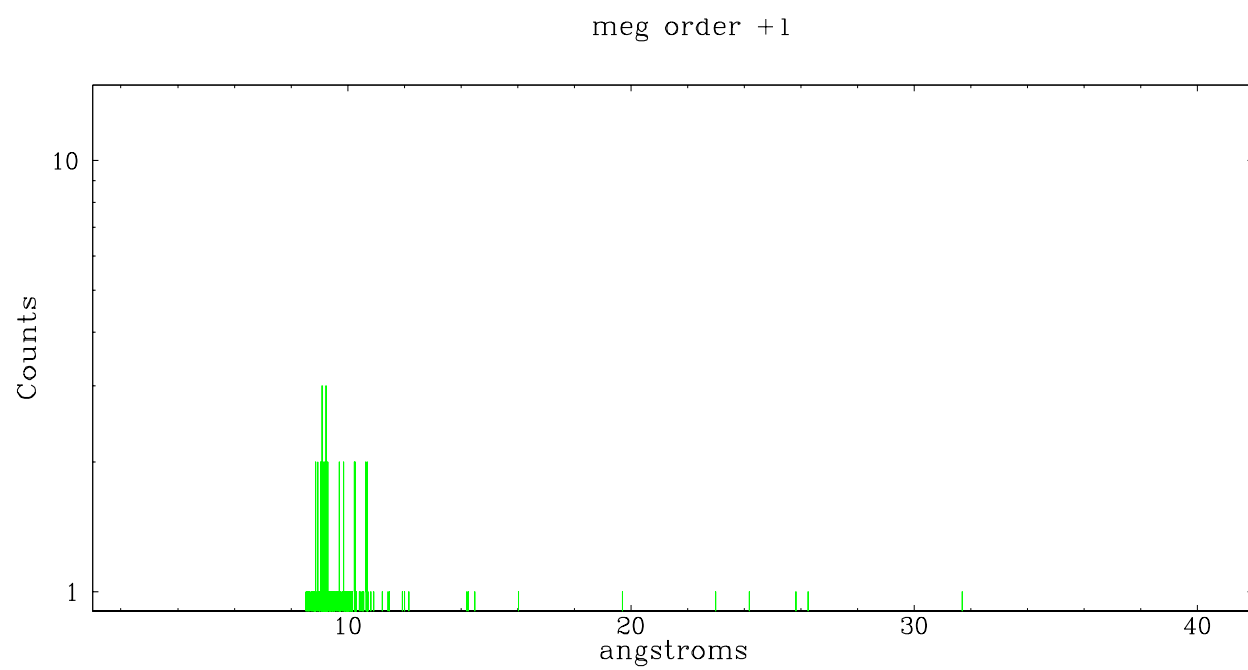
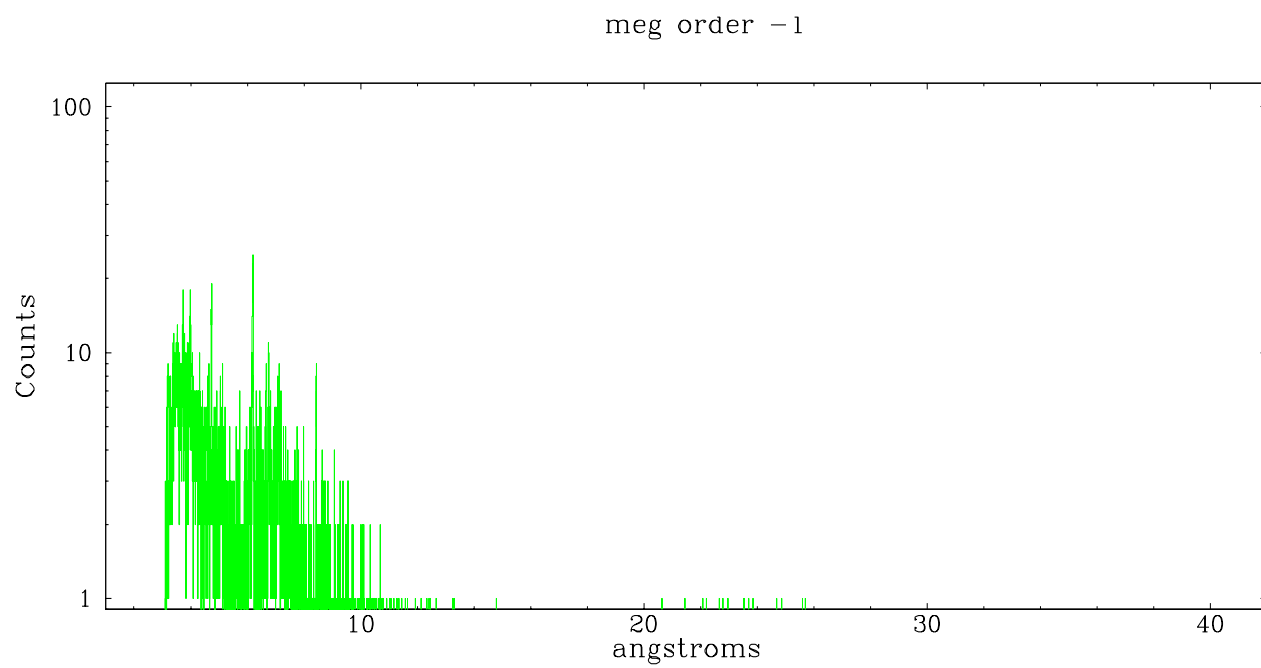
Spot Image MEG



Full Detector MEG

	order -3	order -2	order -1	order 0	order 1	order 2	order 3
Events	1067	773	4641	589	314	492	575





A Summary

A.1 Status

V&V Scientist	Joy Nichols
V&V Date (YYYY-MM-DD)	2006.03.17
V&V Edition	1
V&V Disposition and Status	OK
V&V Charge Time	25.06819

A.2 Comments