

V&V Reference Report

L2 ASCDS Version : 7.6.9

Observation 61448 - L2 Version 001
Chandra X-Ray Center

L2 Processing Date : Jan 5 2007

Contents

1	Front	2
2	OBI	3
2.1	OBI	3
2.1.1	Images	3
2.1.2	Bias	3
2.1.3	Parameters	4
2.1.4	Events	4
2.2	Compared Parameters	5
2.3	Aspect	6
2.4	Star Slots	8
2.5	FID Slots	8
A	Summary	9
A.1	Status	9
A.2	Comments	9

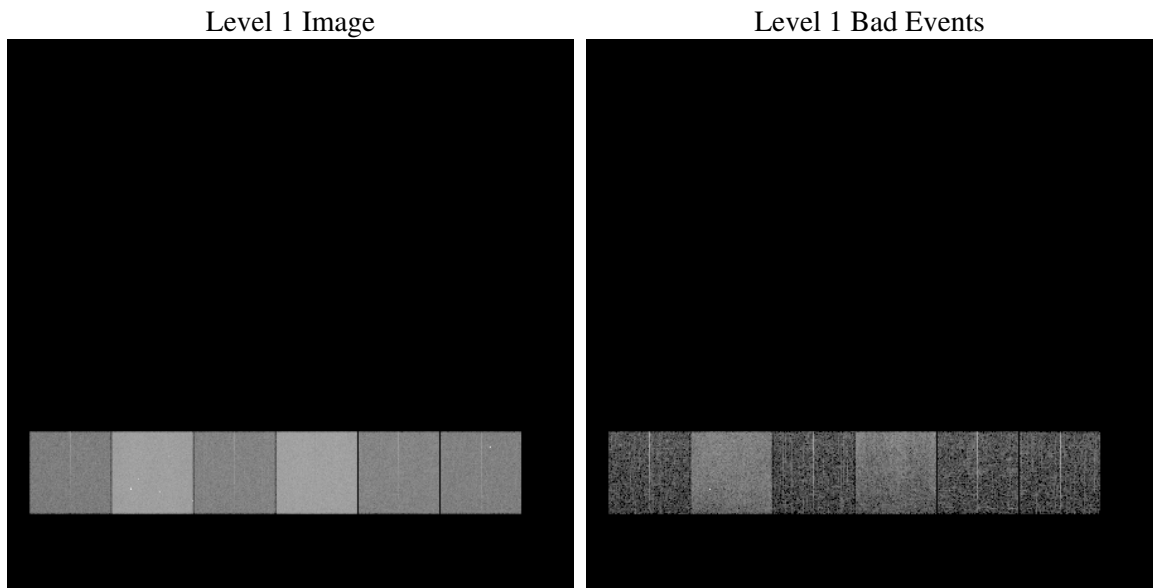
1 Front

seq_num	
obs_id	61448
title	ACIS-456789 diagnostics
observer	CHANDRA engineering request/realtime commanding
object	
dtcycle	0
cycle	P
ra_targ	0.0
dec_targ	0.0
ra_nom	310.03060260637
dec_nom	-40.016432720512
roll_nom	292.1816051972
revision	2
ontime	5872.1183292866
livetime	5797.762031236
ontime4	2274.7381106019
ontime5	6312.9295148998
ontime6	2472.4003805369
ontime7	5872.1183292866
ontime8	2563.2314506918
ontime9	2410.6975305676
l2events	1204046

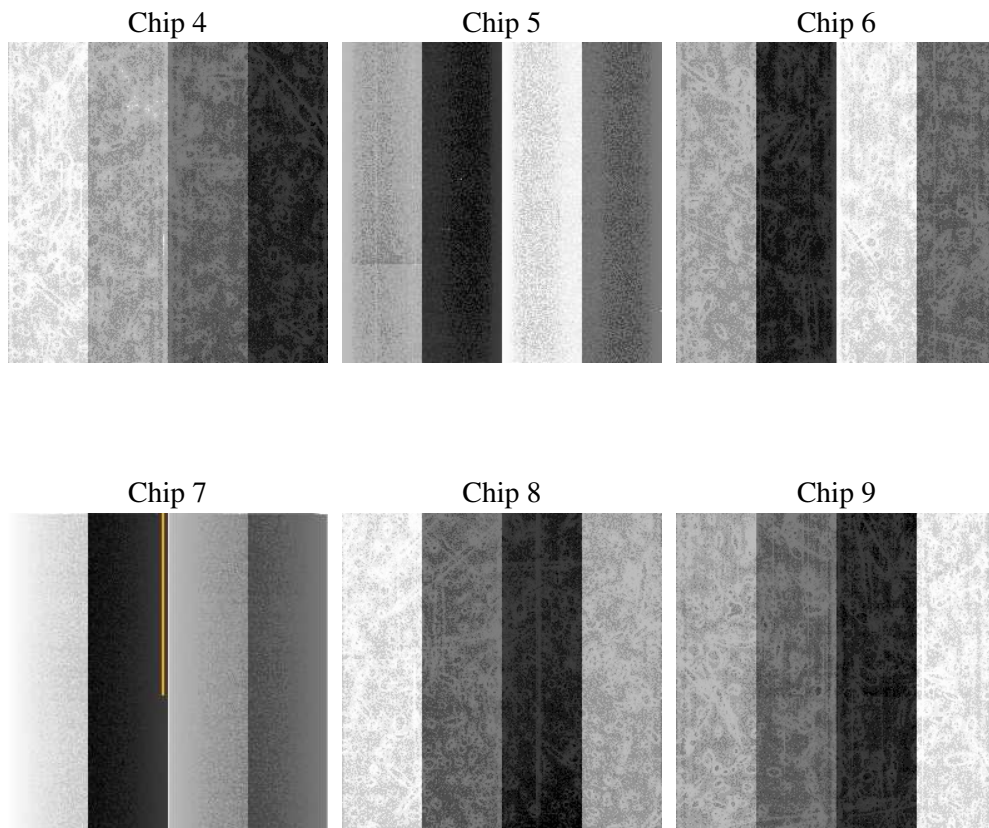
2 OBI

2.1 OBI

2.1.1 Images



2.1.2 Bias



2.1.3 Parameters

obi_num	1
ascdsver	7.6.9
caldsver	3.2.4
date	2007-01-05T18:19:13
revision	2

sched_exp_time	0.0
ontime	5872.7109105885
ontime4	2275.2075719088
ontime5	6313.4810561985
ontime6	2472.9108818471
ontime7	5872.7109105885
ontime8	2563.6598719954
ontime9	2411.3311518729
l1events	1423426

2.1.4 Events

	ccd 4	ccd 5	ccd 6	ccd 7	ccd 8	ccd 9
level 1 events	148093	375962	172013	386973	178205	162180
rejected events	17794	51909	18313	39509	19787	18348
rejected %	12%	13%	10%	10%	11%	11%

	ccd 4	ccd 5	ccd 6	ccd 7	ccd 8	ccd 9
grade 0 events	73990	40940	83817	67075	87307	78871
	49%	10%	48%	17%	48%	48%
grade 1 events	431	108	397	127	445	398
	0%	0%	0%	0%	0%	0%
grade 2 events	22867	155041	26708	102287	27950	25311
	15%	41%	15%	26%	15%	15%
grade 3 events	8083	11496	9575	27024	9842	8910
	5%	3%	5%	6%	5%	5%
grade 4 events	7916	11146	9519	26784	10005	9042
	5%	2%	5%	6%	5%	5%
grade 5 events	1174	6301	1399	5890	1539	1358
	0%	1%	0%	1%	0%	0%
grade 6 events	17443	105430	24081	124294	23314	21698
	11%	28%	13%	32%	13%	13%
grade 7 events	16189	45500	16517	33492	17803	16592
	10%	12%	9%	8%	9%	10%

2.2 Compared Parameters

Parameter	Planned	Actual	Parameter	Planned	Actual
Instrument	ACIS	ACIS	Obspar format version number	6	6
Detector	ACIS-456789	ACIS-456789	Obspar file type	PREDICTED	ACTUAL
Grating	NONE	NONE	Obspar update status	NONE	UPDATED
Data mode	FAINT	FAINT	On-chip summing requested	N	N
Observation mode	SECONDARY	SECONDARY	Subarray requested	NONE	NONE
Pointing RA	0	310.0306026063707	Alternating exposures requested	N	N
Pointing Dec	0	-40.01643272051183	Primary exposure time	0.000000	3.2
Pointing Roll	0.0	292.1816051972035			
SIM focus pos (mm)	-0.684267	-0.6828225247311905			
SIM defocus (mm)	0	0.8505141146731063			
SIM translation stage pos (mm)	-190.132523	250.466033080201			
SIM translation stage offset (mm)	0	-0.01005468664627074			
Observation start time	118788995.946	118788995.17734			
Observation start date	2001-10-06T20:56:36	2001-10-06T20:56:35			
Observation end time	118825787.297	118825786.5288			
Observation end date	2001-10-07T07:09:47	2001-10-07T07:09:46			
Read mode	TIMED	TIMED			

2.3 Aspect

2.4 Star Slots

2.5 FID Slots

A Summary

A.1 Status

V&V Scientist	Beth Sundheim
V&V Date (YYYY-MM-DD)	2007.01.05
V&V Edition	1
V&V Disposition and Status	OK
V&V Charge Time	5.87211832

A.2 Comments