

# V&V Reference Report

## L2 ASCDS Version : 8.4.5

Observation 61438 - L2 Version 3  
Chandra X-Ray Center

L2 Processing Date : Sep 25 2012

## Contents

<b>1</b>	<b>Front</b>	<b>2</b>
<b>2</b>	<b>OBI</b>	<b>3</b>
2.1	OBI . . . . .	3
2.1.1	Images . . . . .	3
2.1.2	Bias . . . . .	3
2.1.3	Parameters . . . . .	4
2.1.4	Events . . . . .	4
2.2	Compared Parameters . . . . .	5
2.3	Star Slots . . . . .	6
2.4	FID Slots . . . . .	6
<b>A</b>	<b>Summary</b>	<b>7</b>
A.1	Status . . . . .	7
A.2	Comments . . . . .	7

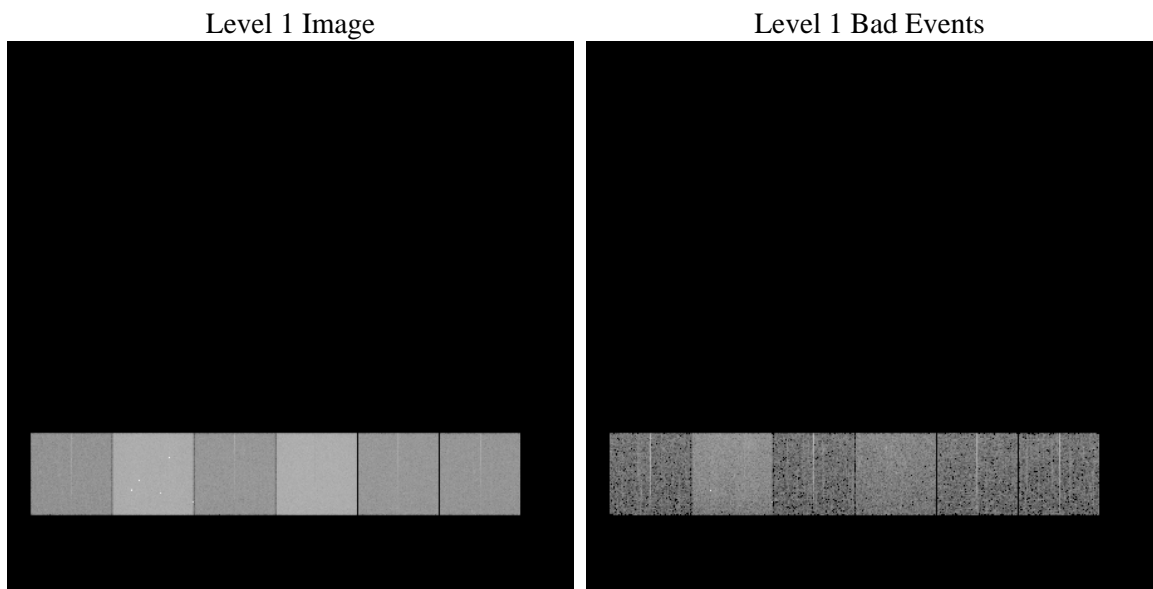
# 1 Front

seq_num	&#160	Sequence number
obs_id	61438	Observation id
title	ACIS-456789 diagnostics	Proposal title
observer	CHANDRA engineering request/realtime commanding	Principal investig
object	&#160	Source name
dtcycle	0	&#160
cycle	P	events from which exps? Prim/Second/Both
ra_targ	0.0	Observer's specified target RA [deg]
dec_targ	0.0	Observer's specified target Dec [deg]
ra_nom	320.05108607824	Nominal RA [deg]
dec_nom	-60.013026858195	Nominal Dec [deg]
roll_nom	300.23658633487	Nominal Roll [deg]
revision	3	Processing version of data
ontime	6329.5667659491	Sum of GTIs [s]
livetime	6249.4179803511	Livetime [s]
ontime4	2427.5308586061	Sum of GTIs [s]
ontime5	6726.0222706348	Sum of GTIs [s]
ontime6	2657.6034087986	Sum of GTIs [s]
ontime7	6329.5667659491	Sum of GTIs [s]
ontime8	2700.6784229577	Sum of GTIs [s]
ontime9	2592.6593693495	Sum of GTIs [s]
l2events	1318821	Number of level 2 events

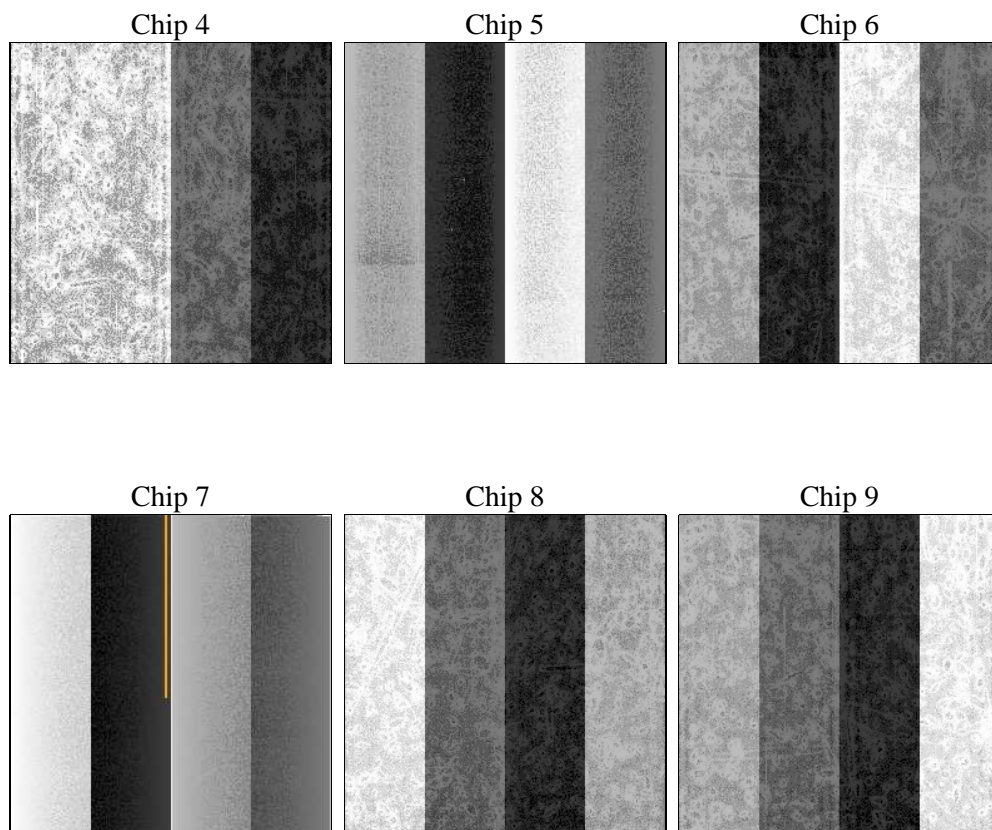
## 2 OBI

### 2.1 OBI

#### 2.1.1 Images



#### 2.1.2 Bias



### 2.1.3 Parameters

obi_num	0	Obi number	sched_exp_time	0.0	[s] Scheduled observation exposure time
ascdsver	8.4.5	Processing system revision	ontime	6329.5667659491	Sum of GTIs [s]
caldsver	4.5.1.1	&#160	ontime4	2427.5308586061	Sum of GTIs [s]
date	2012-09-25T09:34:20	Date and time of file creation	ontime5	6726.0222706348	Sum of GTIs [s]
revision	3	Processing version of data	ontime6	2657.6034087986	Sum of GTIs [s]
			ontime7	6329.5667659491	Sum of GTIs [s]
			ontime8	2700.6784229577	Sum of GTIs [s]
			ontime9	2592.6593693495	Sum of GTIs [s]
			l1events	1545675	Number of level 1 events

### 2.1.4 Events

	ccd 4	ccd 5	ccd 6	ccd 7	ccd 8	ccd 9		ccd 4	ccd 5	ccd 6	ccd 7	ccd 8	ccd 9
level 1 events	160406	411206	186509	420154	190126	177274	grade 0 events	78537	84491	90329	98309	92792	85459
rejected events	20918	49224	20453	32148	21950	20884		48%	20%	48%	23%	48%	48%
rejected %	13%	11%	10%	7%	11%	11%	grade 1 events	431	488	429	252	498	440
								0%	0%	0%	0%	0%	0%
							grade 2 events	25084	135147	28873	85552	29637	27894
								15%	32%	15%	20%	15%	15%
							grade 3 events	8338	21512	10099	38860	10333	9375
								5%	5%	5%	9%	5%	5%
							grade 4 events	8438	20894	10147	38551	10530	9625
								5%	5%	5%	9%	5%	5%
							grade 5 events	1249	9087	1490	6737	1696	1504
								0%	2%	0%	1%	0%	0%
							grade 6 events	19091	100111	26608	126734	25064	24037
								11%	24%	14%	30%	13%	13%
							grade 7 events	19238	39476	18534	25159	19576	18940
								11%	9%	9%	5%	10%	10%

## 2.2 Compared Parameters

Parameter	Planned	Actual	Parameter	Planned	Actual
Instrument	ACIS	ACIS	Obspar format version number	7	7
Detector	ACIS-456789	ACIS-456789	Obspar file type	PREDICTED	ACTUAL
Grating	NONE	NONE	Obspar update status	NONE	UPDATED
Data mode	FAINT	FAINT	On-chip summing requested	N	N
Observation mode	SECONDARY	SECONDARY	Subarray requested	NONE	NONE
[deg] Pointing RA	0	320.0510860782433	Alternating exposures requested	N	N
[deg] Pointing Dec	0	-60.01302685819458	[s] Primary exposure time	0.000000	3.2
[deg] Pointing Roll	0.0	300.2365863348705			
[mm] SIM focus pos	-0.684267	-1.428180813131781			
[mm] SIM defocus	0	0.1051558262725154			
[mm] SIM translation stage pos	-190.132523	250.466033080201			
[mm] SIM translation stage offset	0	-0.01005468664627074			
[s] Observation start time (MET)	119514167.075	119514166.30611			
Observation start date	2001-10-15T06:22:47	2001-10-15T06:22:46			
[s] Observation end time (MET)	119533260.775	119533260.00686			
Observation end date	2001-10-15T11:41:01	2001-10-15T11:41:00			
Read mode	TIMED	TIMED			

## **2.3 Star Slots**

## **2.4 FID Slots**

## A Summary

### A.1 Status

V&V Scientist	Beth Sundheim
V&V Date (YYYY-MM-DD)	2012.09.27
V&V Edition	1
V&V Disposition and Status	OK
V&V Charge Time	6.3295667659491

### A.2 Comments