

# V&V Reference Report

## L2 ASCDS Version : 7.6.10

Observation 61438 - L2 Version 001  
Chandra X-Ray Center

L2 Processing Date : Jan 10 2007

## Contents

<b>1</b>	<b>Front</b>	<b>2</b>
<b>2</b>	<b>OBI</b>	<b>3</b>
2.1	OBI . . . . .	3
2.1.1	Images . . . . .	3
2.1.2	Bias . . . . .	3
2.1.3	Parameters . . . . .	4
2.1.4	Events . . . . .	4
2.2	Compared Parameters . . . . .	5
2.3	Star Slots . . . . .	6
2.4	FID Slots . . . . .	6
<b>A</b>	<b>Summary</b>	<b>7</b>
A.1	Status . . . . .	7
A.2	Comments . . . . .	7

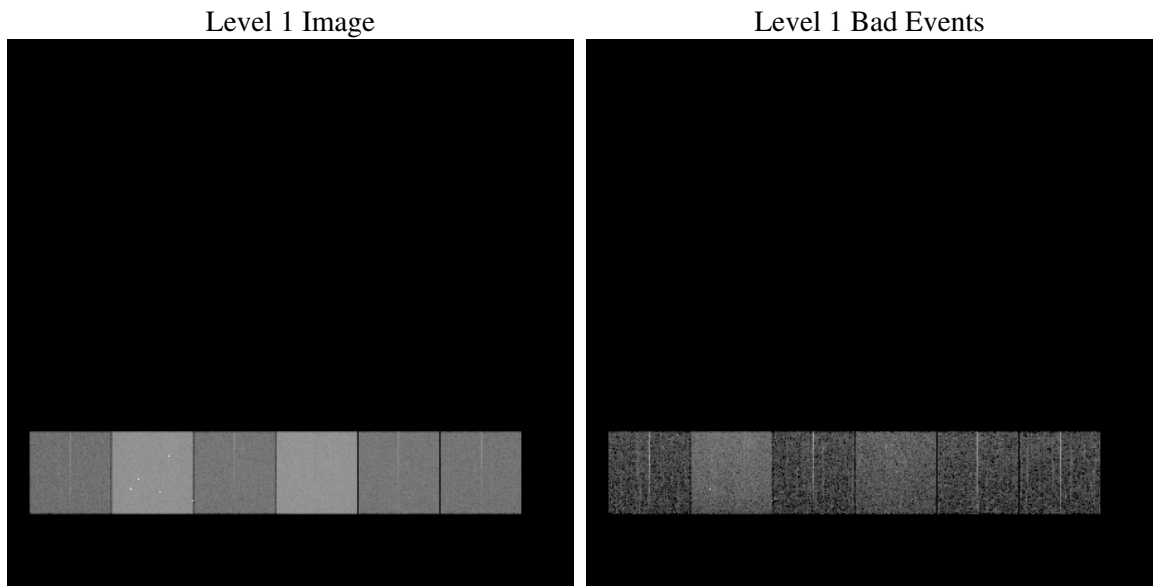
# 1 Front

seq_num	&#160
obs_id	61438
title	ACIS-456789 diagnostics
observer	CHANDRA engineering request/realtime commanding
object	&#160
dtcycle	0
cycle	P
ra_targ	0.0
dec_targ	0.0
ra_nom	320.05108607824
dec_nom	-60.013026858195
roll_nom	300.23658633487
revision	2
ontime	6327.9667659551
livetime	6247.8382405204
ontime4	2425.9308586121
ontime5	6726.0222706497
ontime6	2656.0034088045
ontime7	6327.9667659551
ontime8	2700.7136105895
ontime9	2591.0593693554
l2events	1318987

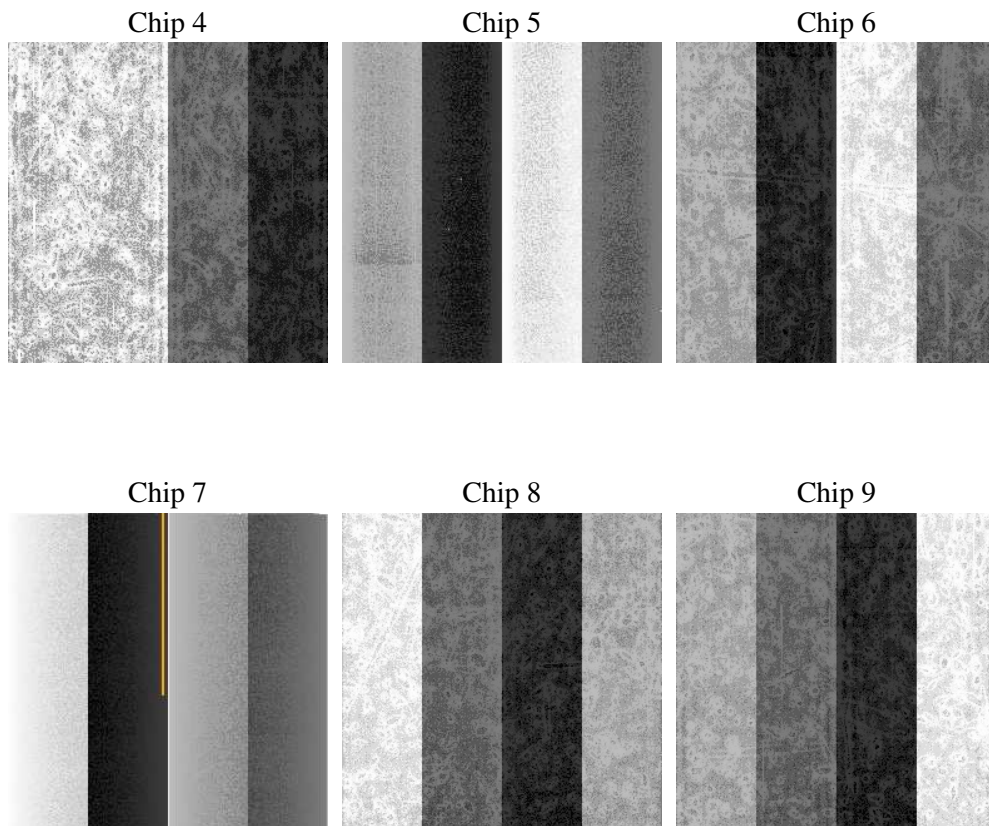
## 2 OBI

### 2.1 OBI

#### 2.1.1 Images



#### 2.1.2 Bias



### 2.1.3 Parameters

obi_num	0
ascdsver	7.6.10
caldbver	3.3.0
date	2007-01-10T16:12:16
revision	2

sched_exp_time	0.0
ontime	6327.9667659551
ontime4	2425.9308586121
ontime5	6726.0222706497
ontime6	2656.0034088045
ontime7	6327.9667659551
ontime8	2700.7136105895
ontime9	2591.0593693554
l1events	1545675

### 2.1.4 Events

	ccd 4	ccd 5	ccd 6	ccd 7	ccd 8	ccd 9
level 1 events	160406	411206	186509	420154	190126	177274
rejected events	20932	48844	20692	32253	21787	21114
rejected %	13%	11%	11%	7%	11%	11%

	ccd 4	ccd 5	ccd 6	ccd 7	ccd 8	ccd 9
grade 0 events	78345	86112	90182	98574	92709	85343
	48%	20%	48%	23%	48%	48%
grade 1 events	423	491	424	252	495	432
	0%	0%	0%	0%	0%	0%
grade 2 events	25277	133516	29021	85268	29720	28010
	15%	32%	15%	20%	15%	15%
grade 3 events	8310	21921	10068	39006	10315	9360
	5%	5%	5%	9%	5%	5%
grade 4 events	8411	21371	10118	38699	10513	9608
	5%	5%	5%	9%	5%	5%
grade 5 events	1250	9074	1486	6737	1696	1503
	0%	2%	0%	1%	0%	0%
grade 6 events	19131	99634	26646	126551	25082	24054
	11%	24%	14%	30%	13%	13%
grade 7 events	19259	39087	18564	25067	19596	18964
	12%	9%	9%	5%	10%	10%

## 2.2 Compared Parameters

Parameter	Planned	Actual	Parameter	Planned	Actual
Instrument	ACIS	ACIS	Obspar format version number	6	6
Detector	ACIS-456789	ACIS-456789	Obspar file type	PREDICTED	ACTUAL
Grating	NONE	NONE	Obspar update status	NONE	UPDATED
Data mode	FAINT	FAINT	On-chip summing requested	N	N
Observation mode	SECONDARY	SECONDARY	Subarray requested	NONE	NONE
Pointing RA	0	320.0510860782432	Alternating exposures requested	N	N
Pointing Dec	0	-60.01302685819459	Primary exposure time	0.000000	3.2
Pointing Roll	0.0	300.2365863348705			
SIM focus pos (mm)	-0.684267	-1.428180813131781			
SIM defocus (mm)	0	0.1051558262725154			
SIM translation stage pos (mm)	-190.132523	250.466033080201			
SIM translation stage offset (mm)	0	-0.01005468664627074			
Observation start time	119514167.075	119514166.30611			
Observation start date	2001-10-15T06:22:47	2001-10-15T06:22:46			
Observation end time	119533260.775	119533260.00686			
Observation end date	2001-10-15T11:41:01	2001-10-15T11:41:00			
Read mode	TIMED	TIMED			

## **2.3 Star Slots**

## **2.4 FID Slots**

# A Summary

## A.1 Status

V&V Scientist	Jen Lauer
V&V Date (YYYY-MM-DD)	2007.01.10
V&V Edition	1
V&V Disposition and Status	OK
V&V Charge Time	6.32796676

## A.2 Comments

The ACIS focal plane temperature was above calibration limits for the entire observation.