

V&V Reference Report

L2 ASCDS Version : 7.6.7.1

Observation 6138 - L2 Version 002
Chandra X-Ray Center

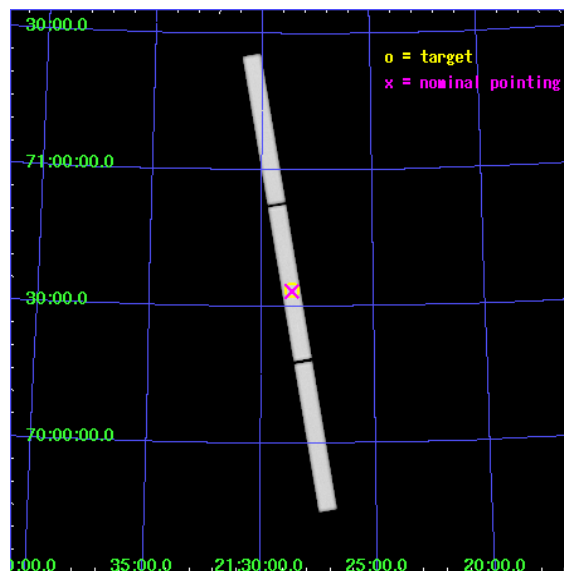
L2 Processing Date : Apr 4 2006

Contents

1	Front	2
2	OBI	3
2.1	OBI	3
2.1.1	Images	3
2.1.2	Parameters	4
2.1.3	Events	4
2.2	Compared Parameters	5
2.3	Aspect	6
2.4	Star Slots	9
2.4.1	Slot 3	9
2.4.2	Slot 4	10
2.4.3	Slot 5	11
2.4.4	Slot 6	12
2.4.5	Slot 7	13
2.5	FID Slots	14
2.5.1	Slot 0	14
2.5.2	Slot 1	15
2.5.3	Slot 2	16
3	Gratings	17
3.1	LETG Arm	17
A	Summary	19
A.1	Status	19
A.2	Comments	19

1 Front

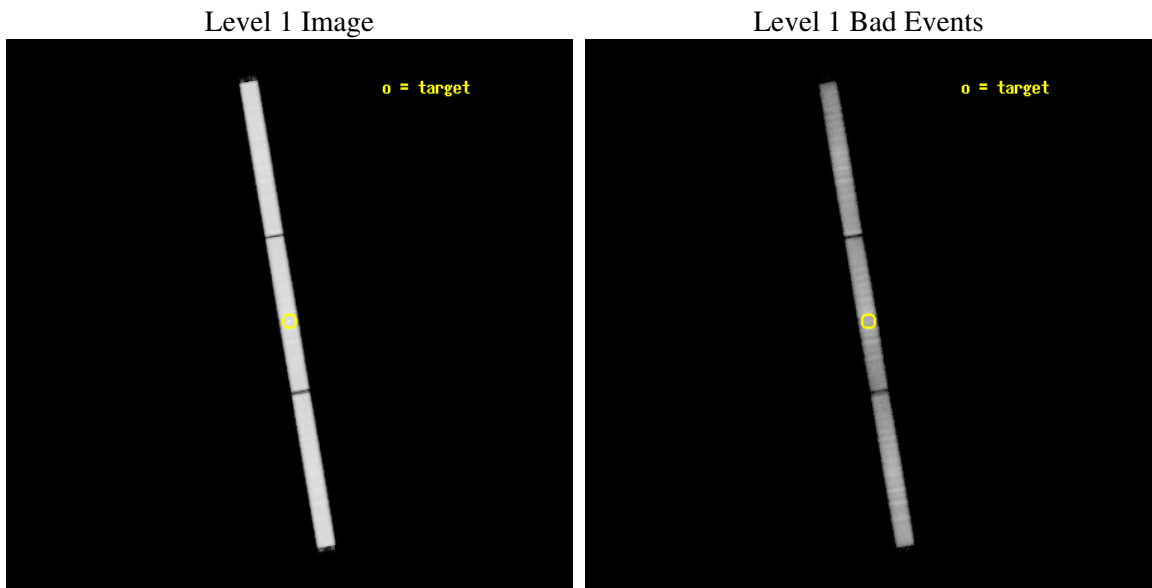
seq_num	200330
obs_id	6138
title	The location and spatial structure of the X-ray emitting plasma in the magnetically confined environment of beta Cep
observer	Dr Coralie Neiner
object	beta Cep
ra_targ	322.165
dec_targ	70.560717
ra_nom	322.16228838921
dec_nom	70.556087015952
roll_nom	260.26989686579
revision	2
ontime	29540.757612199
livetime	29295.683714651
l2events	1762695



2 OBI

2.1 OBI

2.1.1 Images



2.1.2 Parameters

obi_num	0
ascdsver	7.6.7.1
caldsver	3.2.1
date	2006-04-04T12:30:29
revision	2

sched_exp_time	28977.366000
ontime	29541.52636224
l1events	2577505

2.1.3 Events

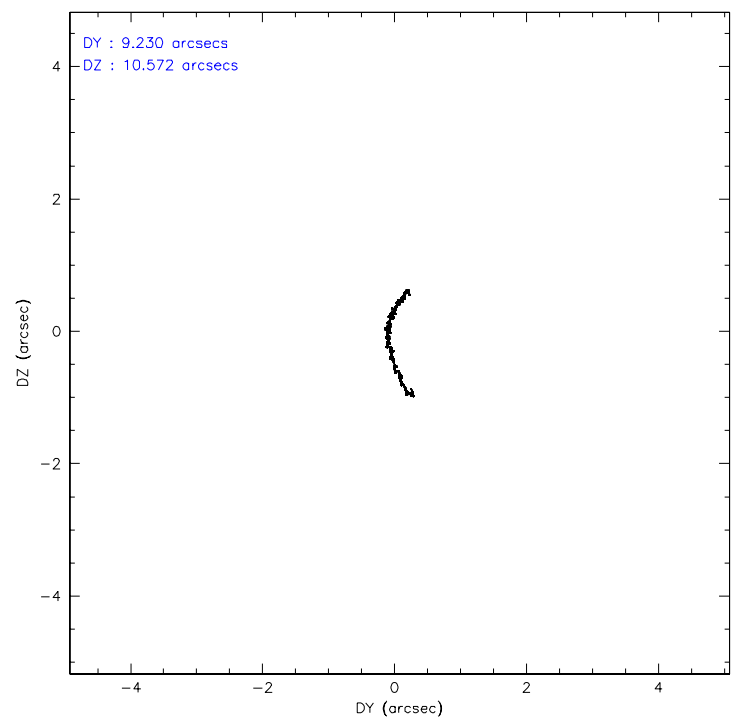
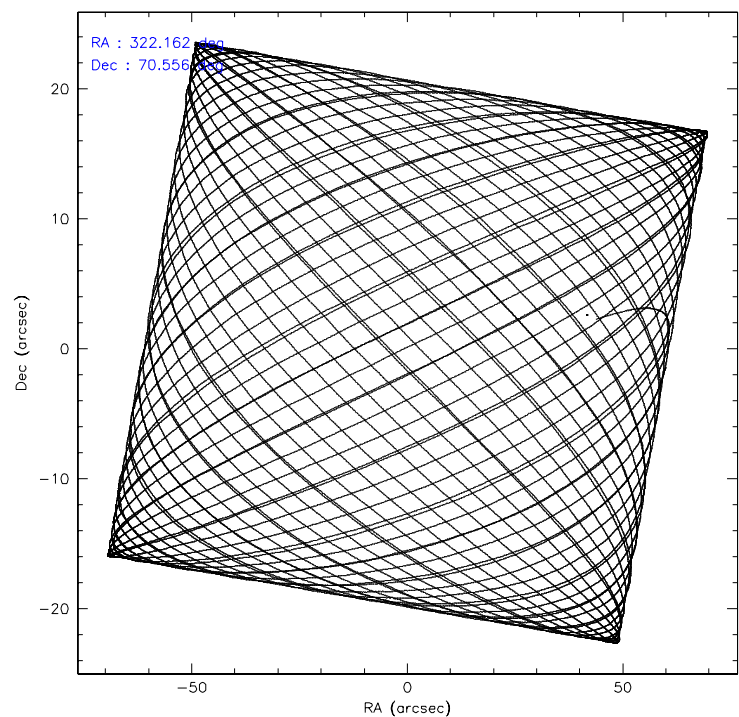
Level 1 Events

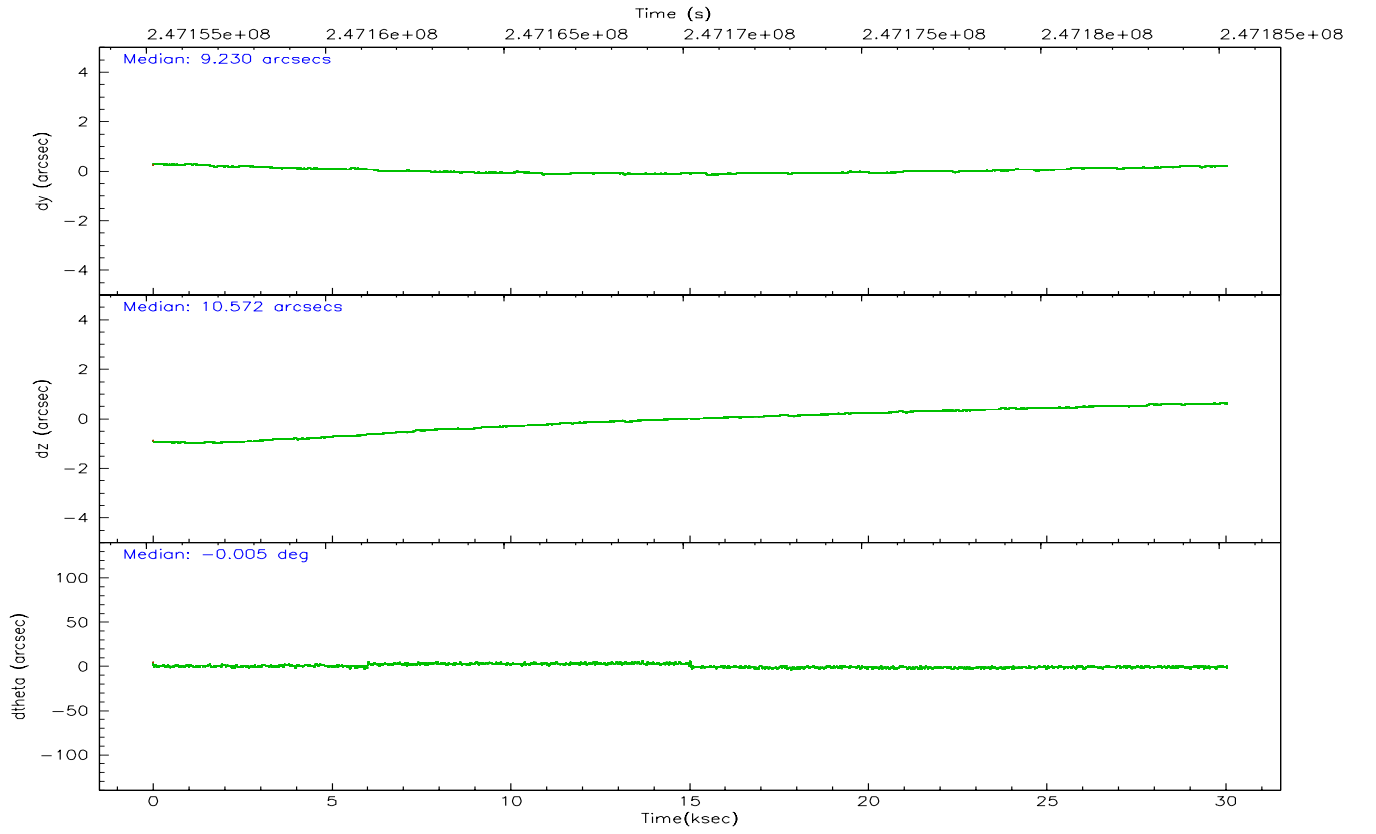
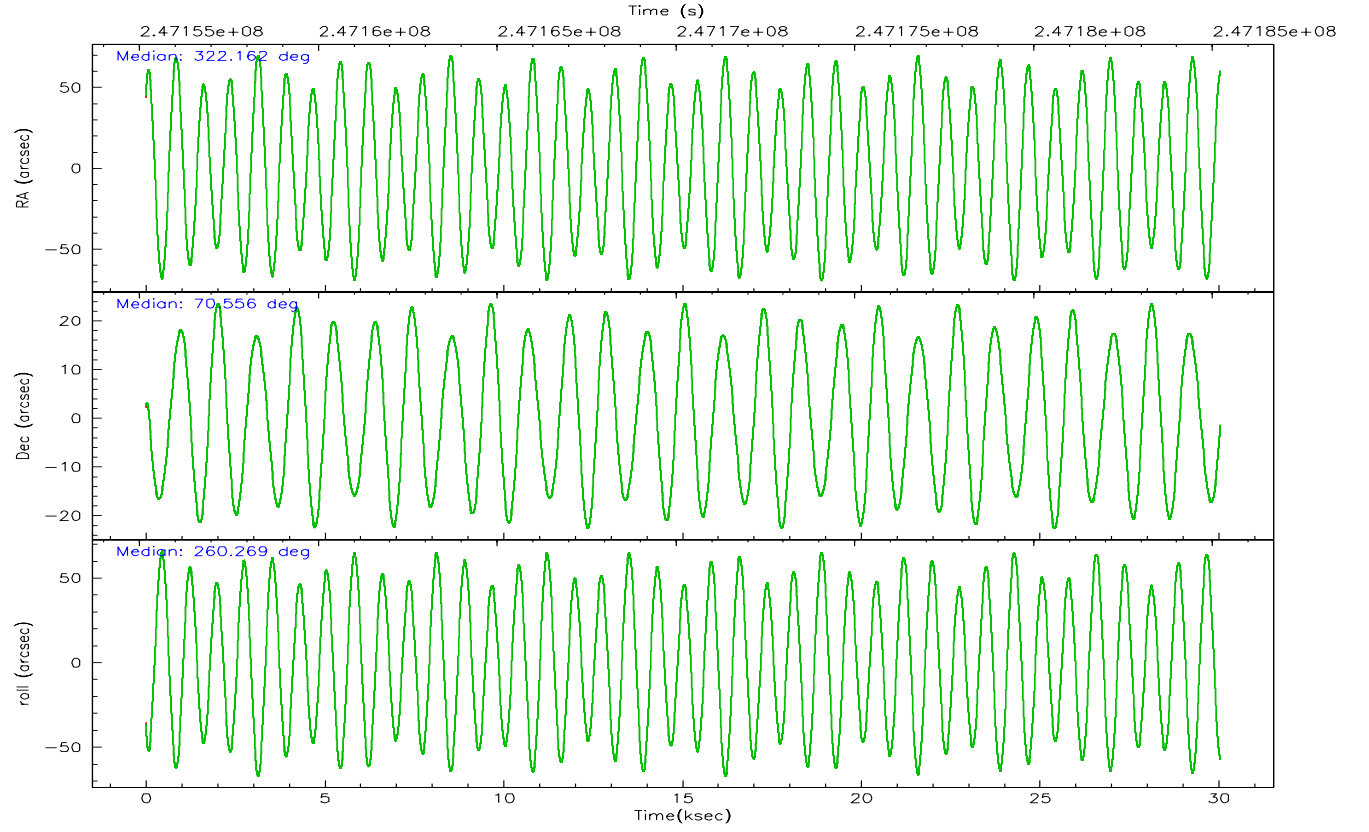
	segment 1	segment 2	segment 3
level 1 events	870043	845292	862170
rejected events	176326	192210	212637
rejected %	20%	22%	24%

2.2 Compared Parameters

Parameter	Planned	Actual	Parameter	Planned	Actual
Instrument	HRC	HRC	Obspar format version number	6	6
Detector	HRC-S	HRC-S	Obspar file type	PREDICTED	ACTUAL
Grating	LETG	LETG	Obspar update status	NONE	UPDATED
Data mode	OBSERVING	OBSERVING			
Observation mode	POINTING	POINTING			
Pointing RA	322.128446	322.1622883892057			
Pointing Dec	70.582433	70.55608701595183			
Pointing Roll	260.234471	260.2698968657854			
SIM focus pos (mm)	-1.429586	-1.428180813131781			
SIM defocus (mm)	0.1037507710433287	0.1051558262725154			
SIM translation stage pos (mm)	250.455976	250.466033080201			
SIM translation stage offset (mm)	0	-0.01005468664627074			
Phase constraints	Y	Y			
Phase period	12.000750	12.000750			
Phase epoch	53962.310000	53962.310000			
Phase start	0.216245	0.216245			
Phase end	0.283755	0.283755			
Phase start error	0.020000	0.020000			
Phase end error	0.020000	0.020000			
Observation start time	247155342.184000	247154394.47069			
Observation start date	2005-10-31T14:14:38	2005-10-31T13:59:54			
Observation end time	247184319.184000	247185835.32214			
Observation end date	2005-10-31T22:17:35	2005-10-31T22:43:55			

2.3 Aspect



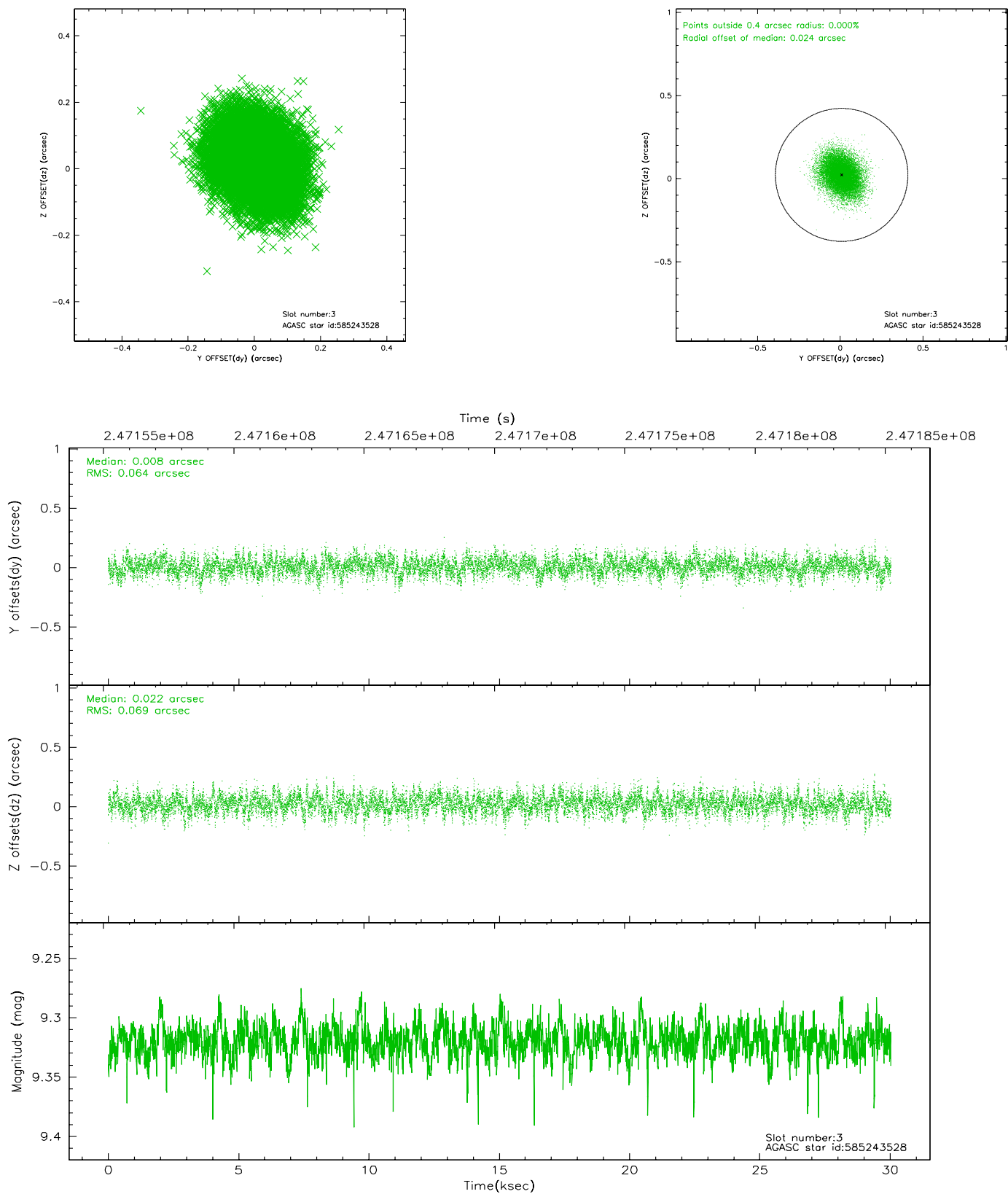


Slot Statistics

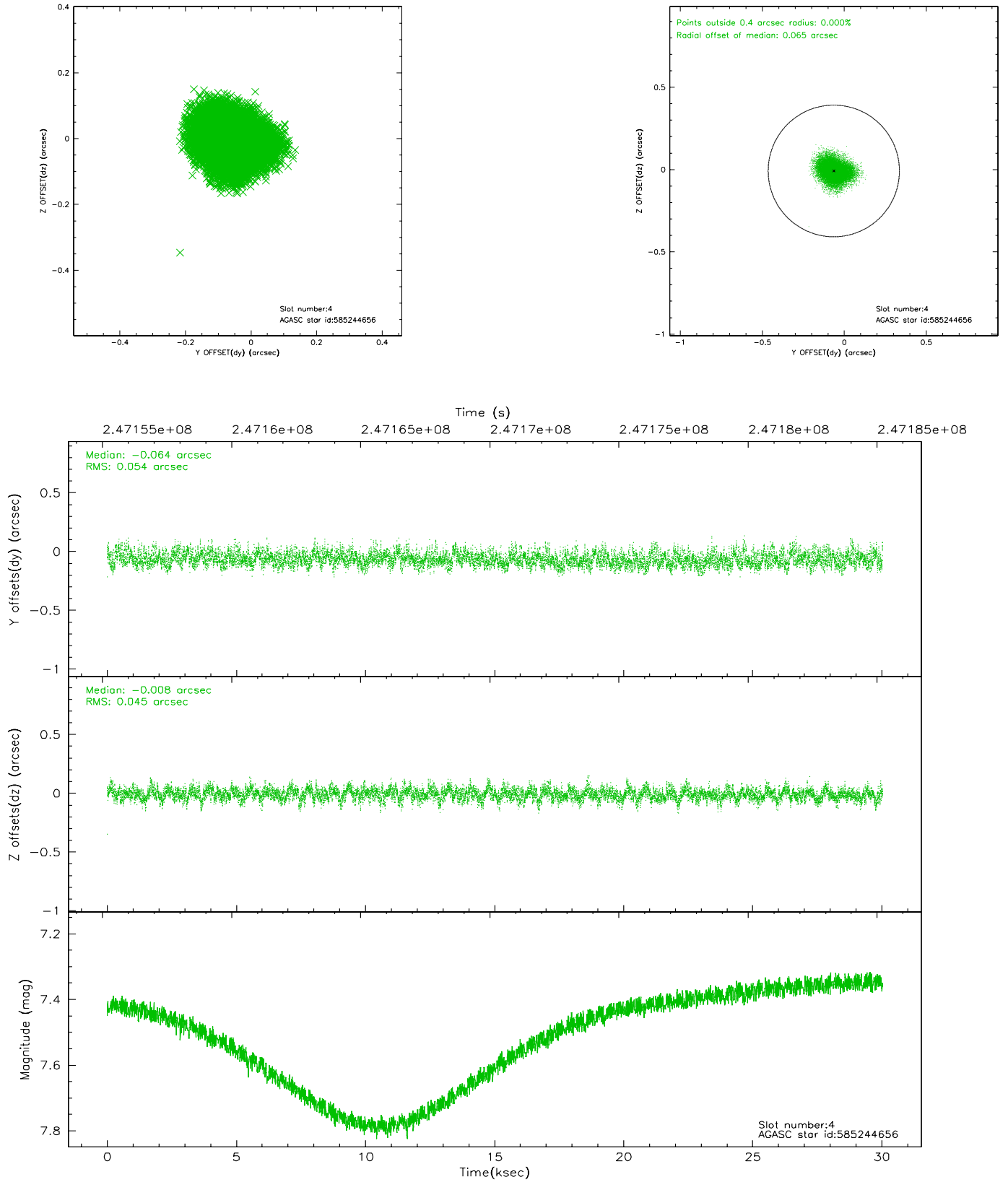
slot	status	id	mag	n_pts	med_dy	med_dz	dr1	dr2	ra	dec	mean_y	mean_z
0	FID	HRC-S-1	7.02	7327	0.099	-0.131	0.013	0.021	0.000000	0.000000	-1163.48	-459.19
1	FID	HRC-S-2	7.01	7328	0.099	-0.154	0.030	0.044	0.000000	0.000000	1236.04	-451.85
2	FID	HRC-S-4	6.99	7327	0.202	-0.019	0.029	0.041	0.000000	0.000000	1235.02	573.00
3	GUIDE	585243528	9.32	14646	0.008	0.022	0.100	0.164	323.001841	70.190189	1203.78	1288.66
4	GUIDE	585244656	7.48	14653	-0.064	-0.008	0.075	0.120	322.746463	70.823219	-981.85	572.72
5	GUIDE	585245544	7.37	14649	-0.028	-0.061	0.068	0.110	321.319997	70.477535	530.45	-895.24
6	GUIDE	585249712	9.18	14646	0.102	0.022	0.097	0.166	322.943679	70.596904	-222.90	950.75
7	GUIDE	585244168	9.02	14650	-0.024	0.030	0.075	0.123	323.050612	69.955180	2023.83	1503.23

2.4 Star Slots

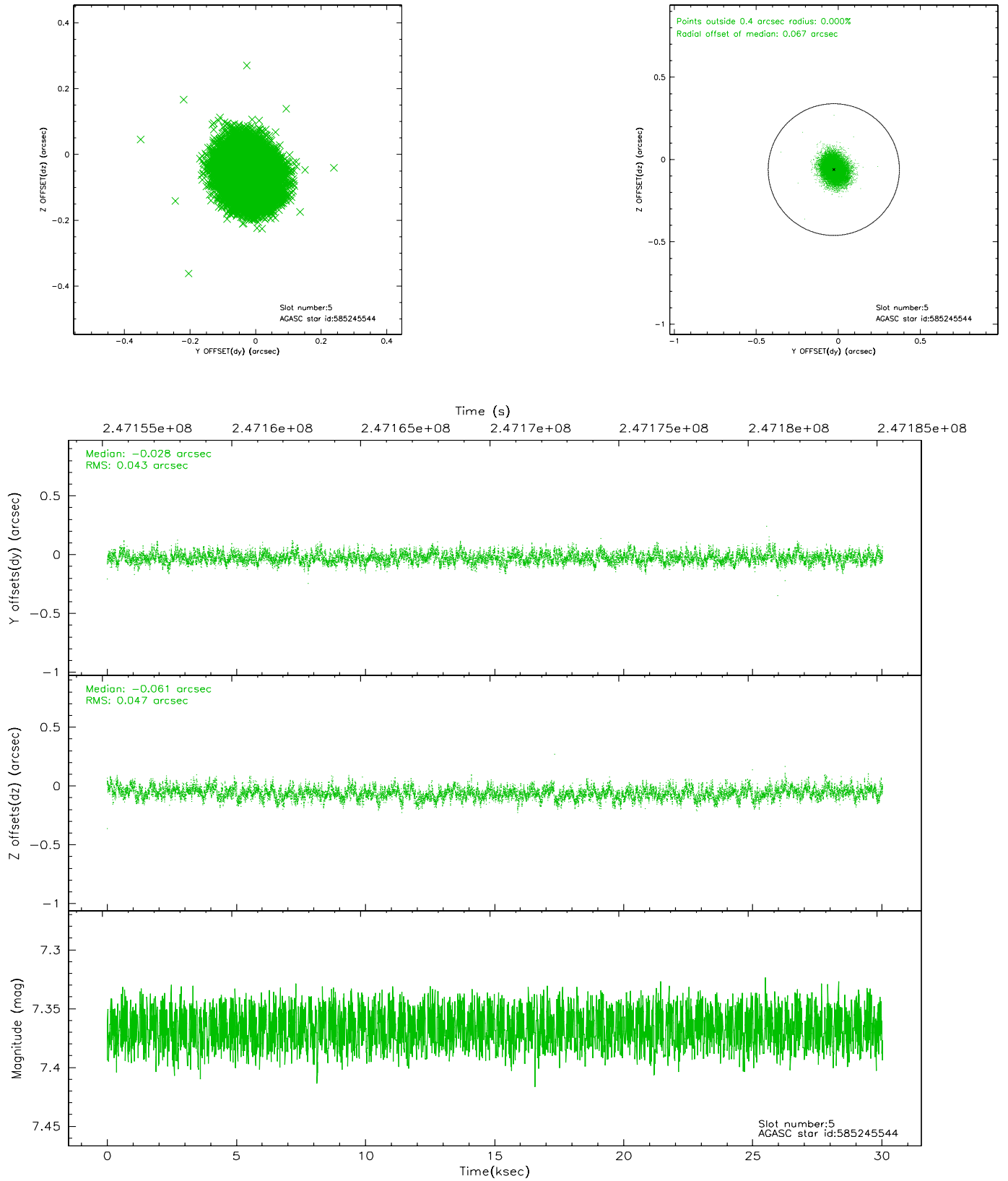
2.4.1 Slot 3



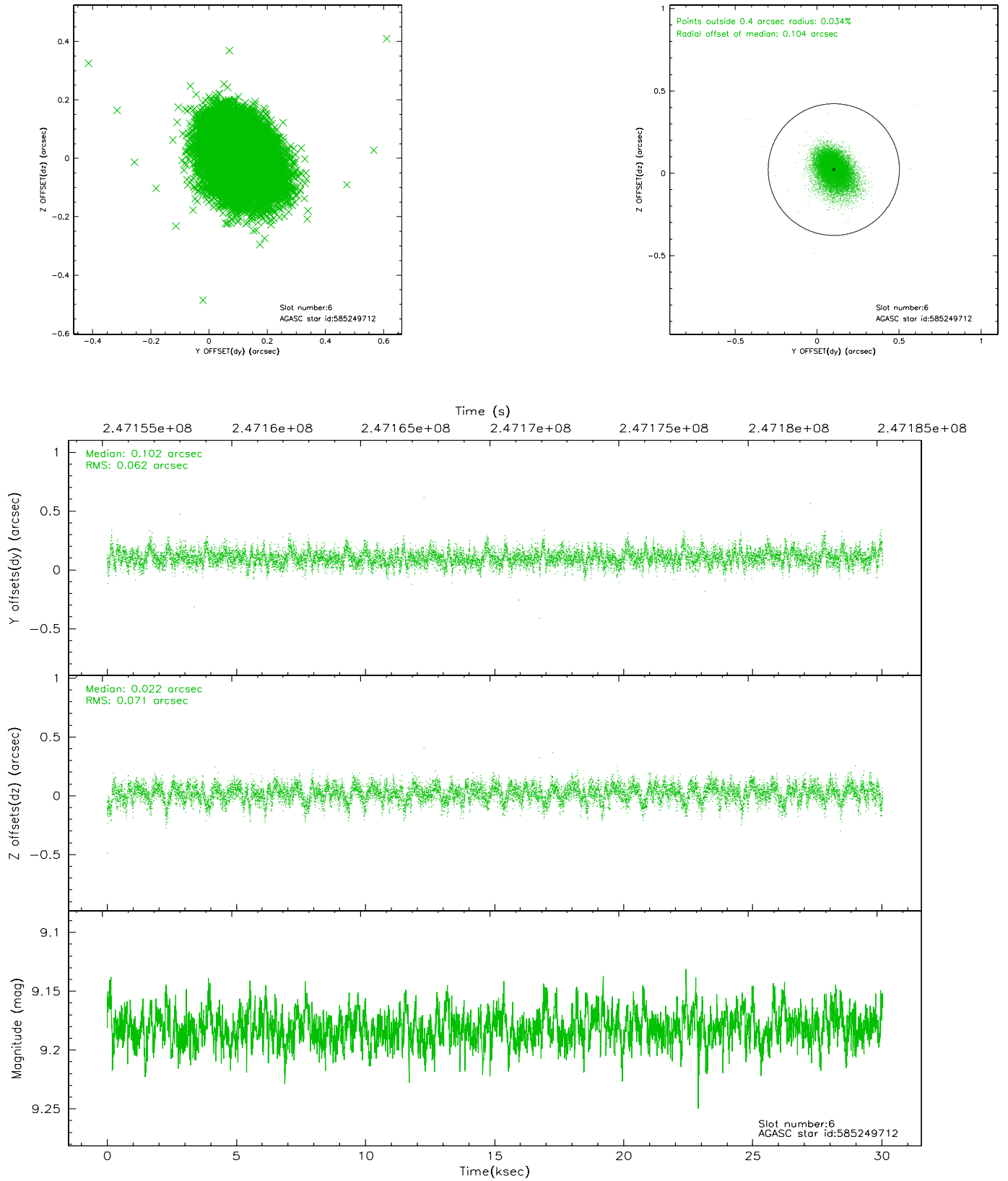
2.4.2 Slot 4



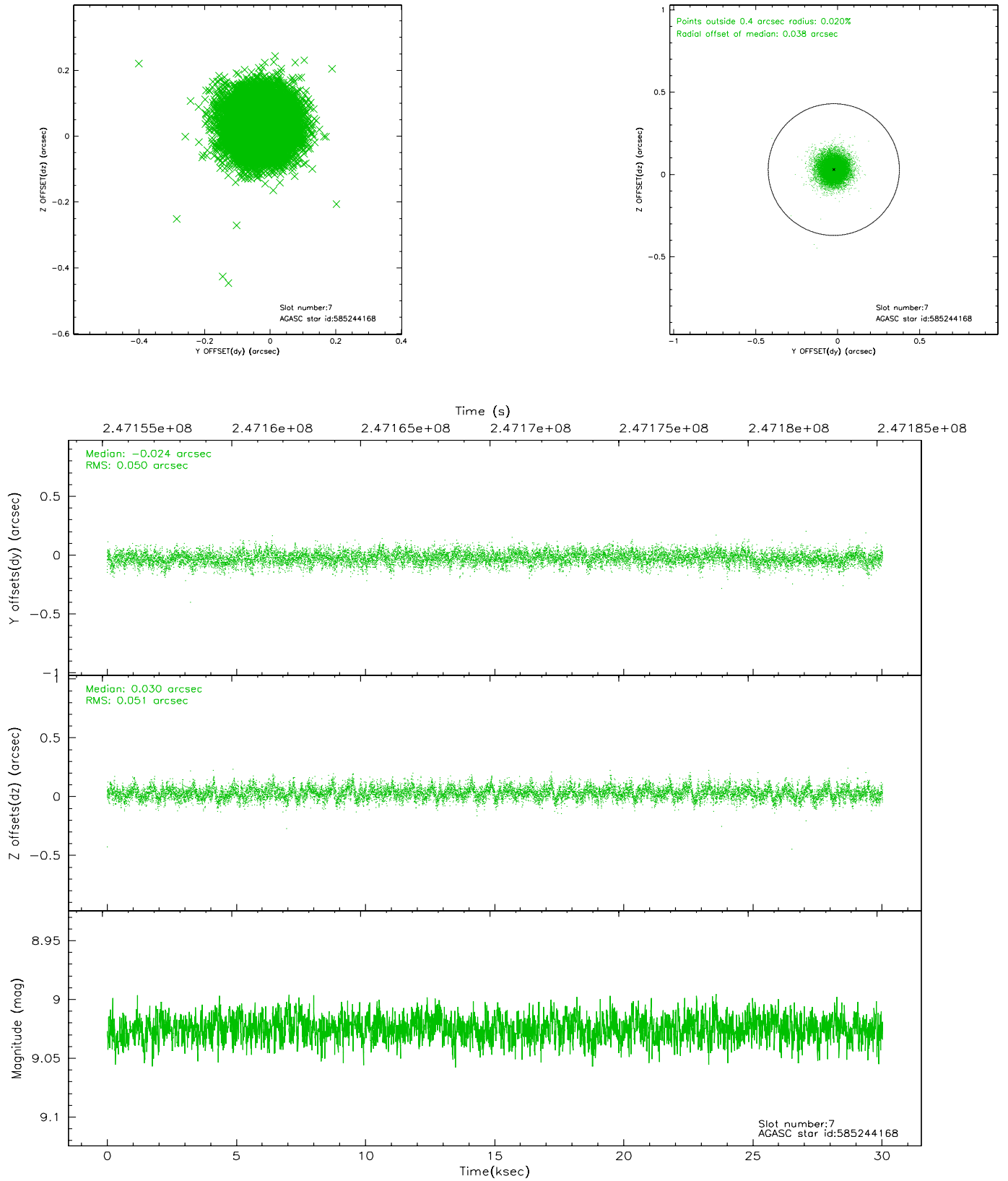
2.4.3 Slot 5



2.4.4 Slot 6

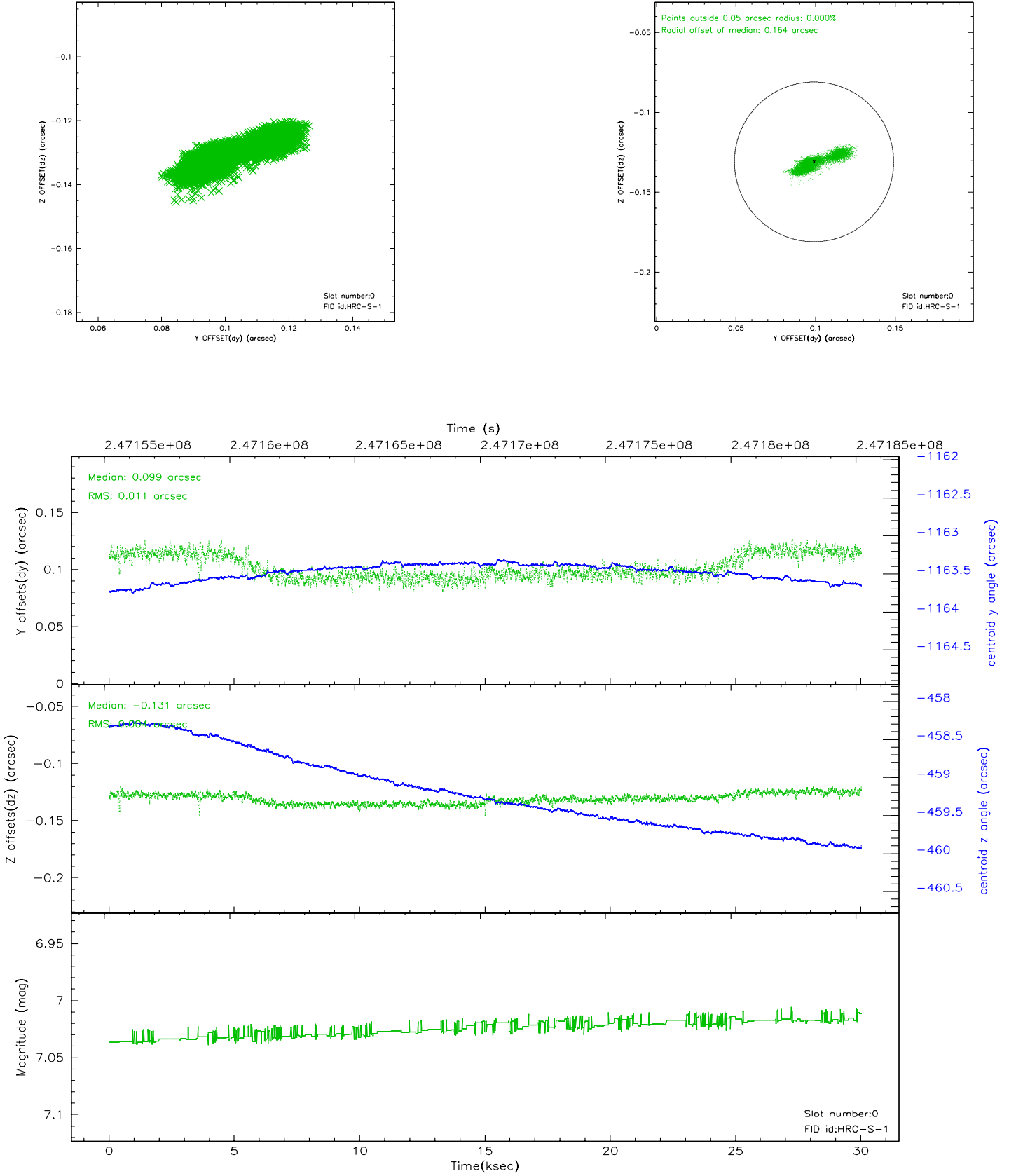


2.4.5 Slot 7

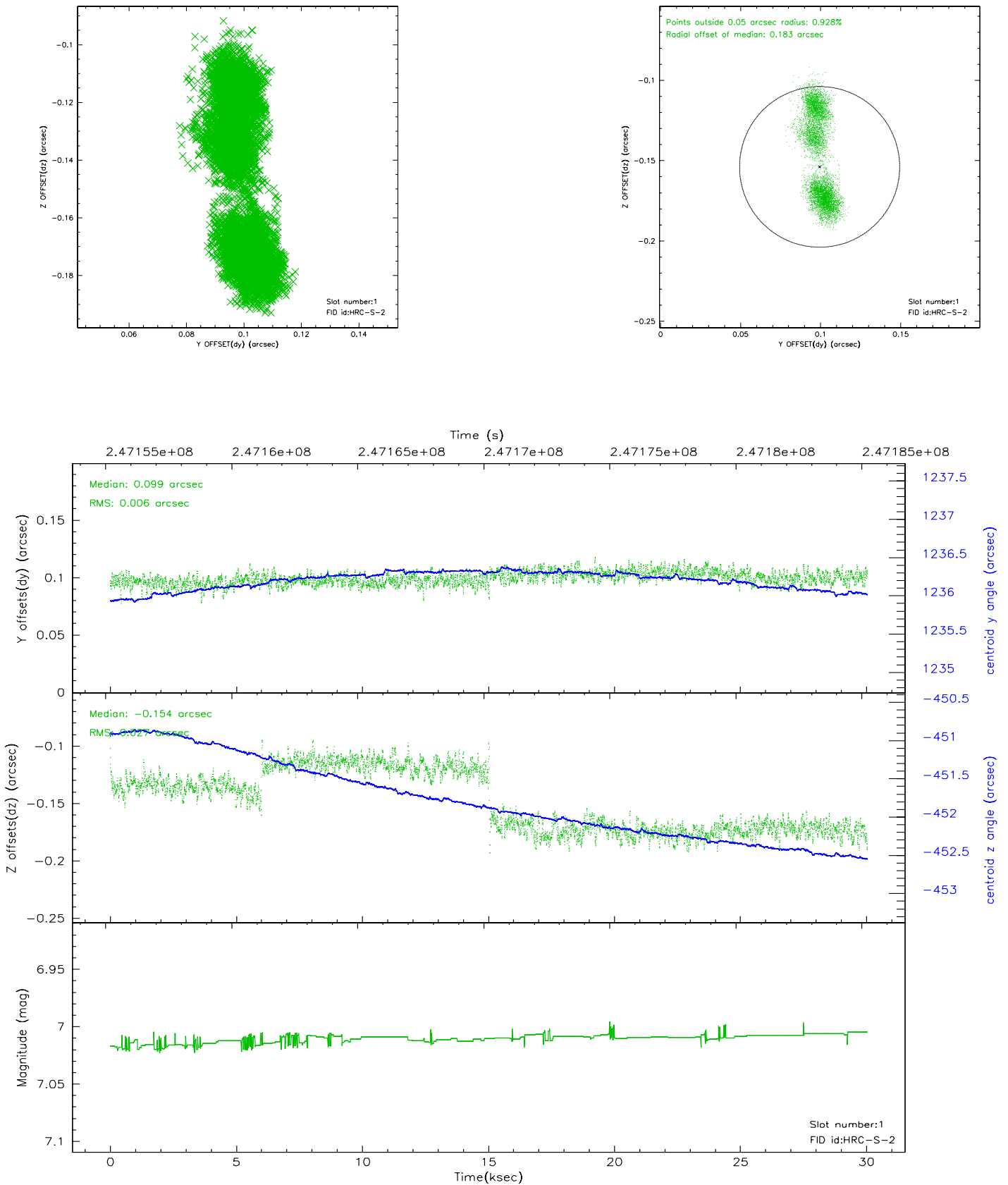


2.5 FID Slots

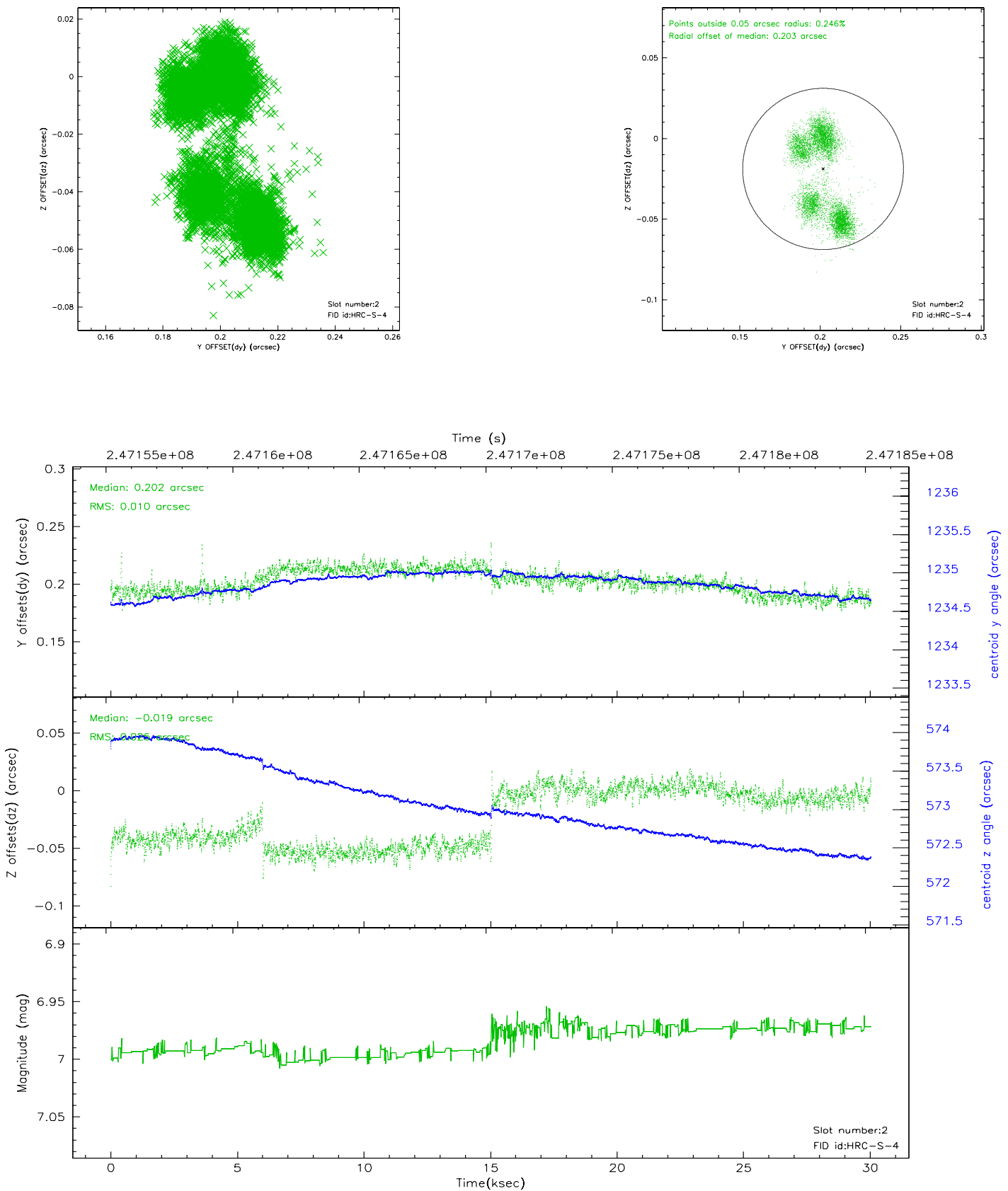
2.5.1 Slot 0



2.5.2 Slot 1

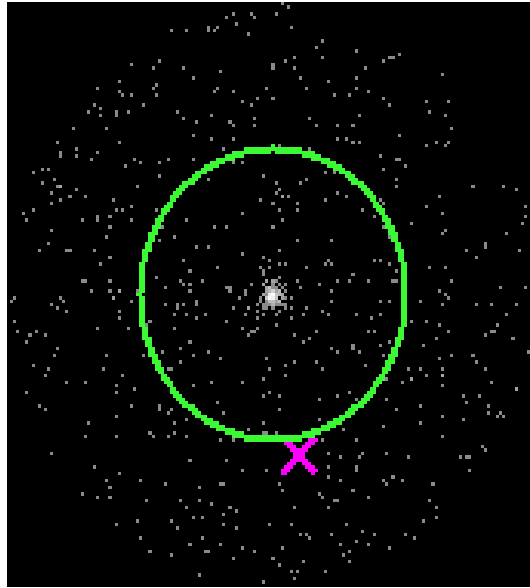


2.5.3 Slot 2



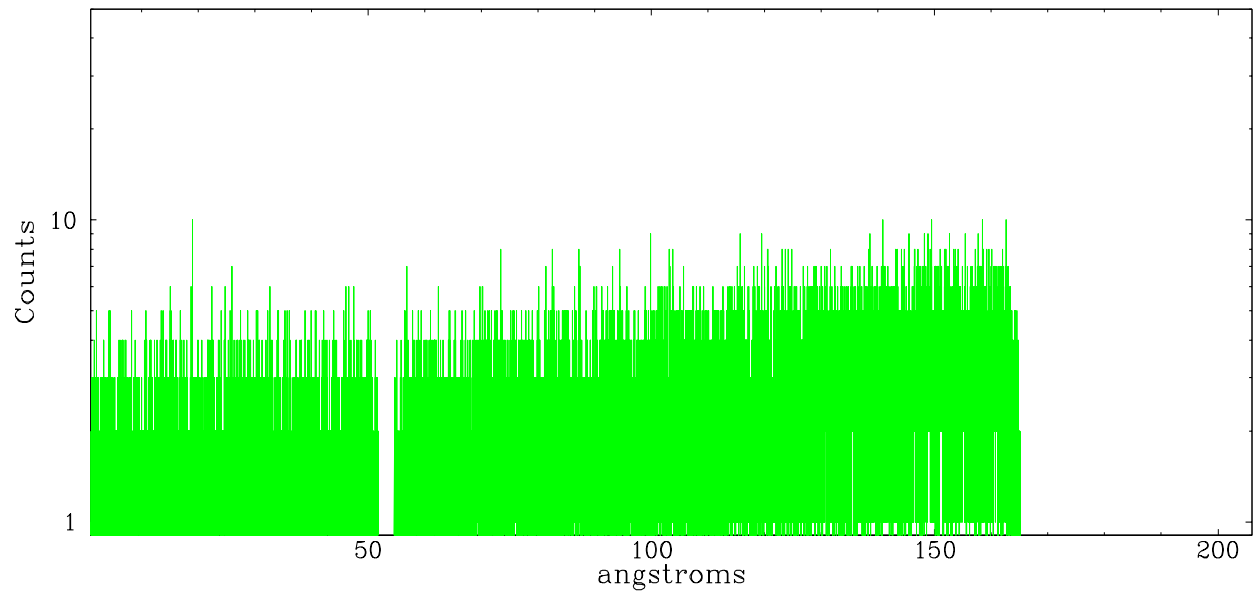
3 Gratings

3.1 LETG Arm

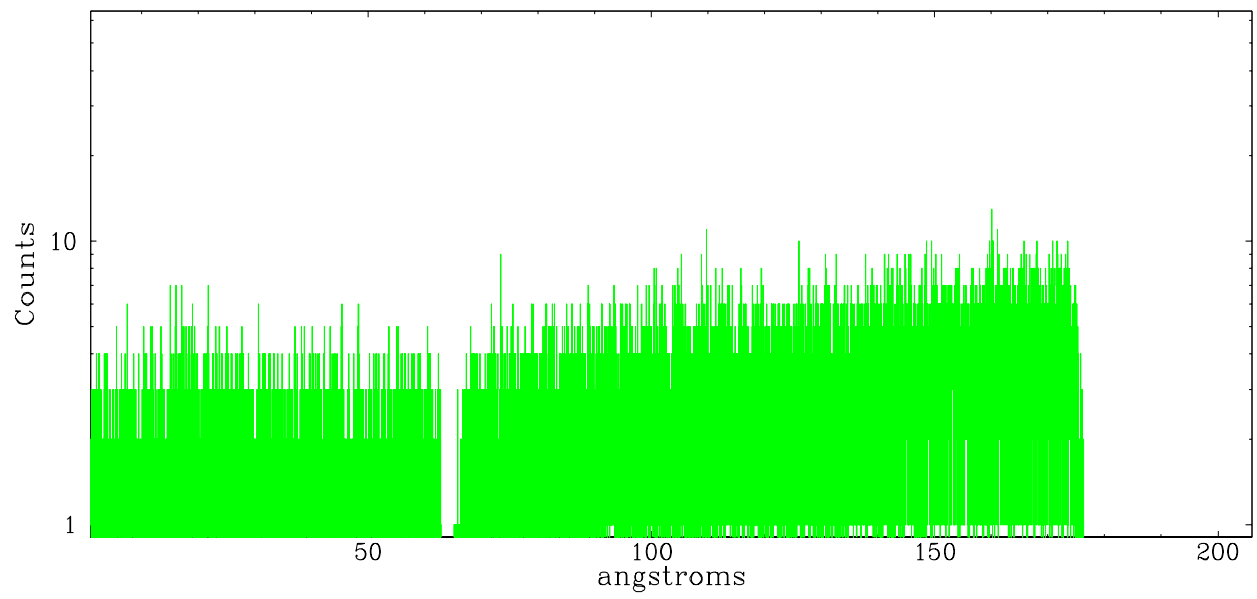


LETG Zero Order

leg order -1



leg order $+1$



A Summary

A.1 Status

V&V Scientist	Doug Morgan
V&V Date (YYYY-MM-DD)	2006.04.04
V&V Edition	1
V&V Disposition and Status	OK
V&V Charge Time	29.54075

A.2 Comments