

# V&V Reference Report

## L2 ASCDS Version : 8.4.5

Observation 61348 - L2 Version 3  
Chandra X-Ray Center

L2 Processing Date : Sep 30 2012

## Contents

<b>1</b>	<b>Front</b>	<b>2</b>
<b>2</b>	<b>OBI</b>	<b>3</b>
2.1	OBI . . . . .	3
2.1.1	Images . . . . .	3
2.1.2	Bias . . . . .	3
2.1.3	Parameters . . . . .	4
2.1.4	Events . . . . .	4
2.2	Compared Parameters . . . . .	5
2.3	Star Slots . . . . .	6
2.4	FID Slots . . . . .	6
<b>A</b>	<b>Summary</b>	<b>7</b>
A.1	Status . . . . .	7
A.2	Comments . . . . .	7

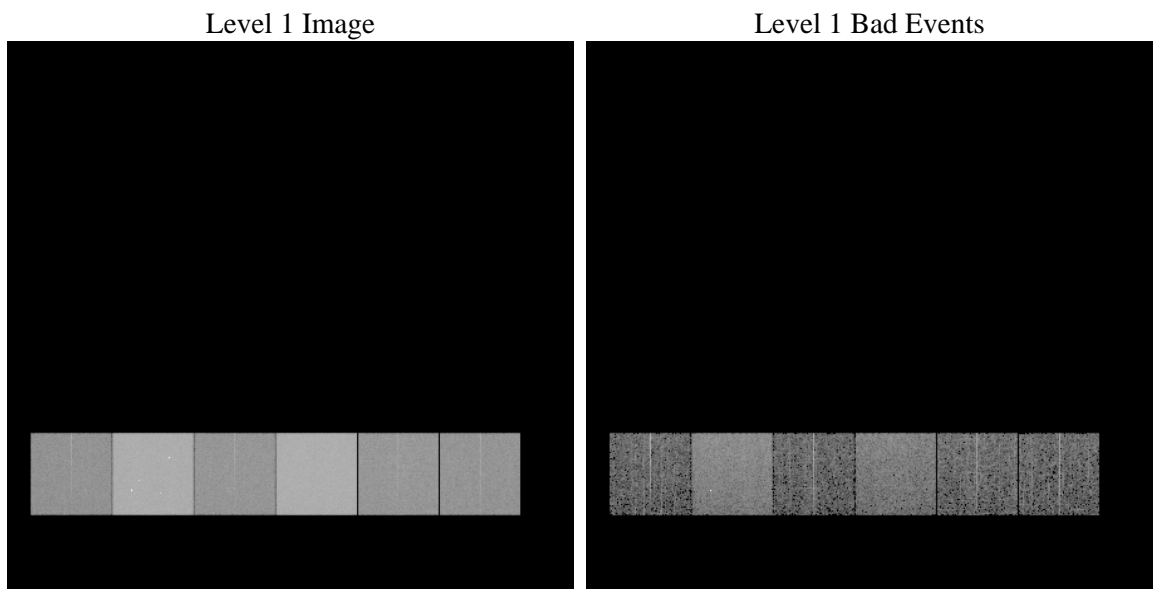
# 1 Front

seq_num	&#160	Sequence number
obs_id	61348	Observation id
title	ACIS-456789 diagnostics	Proposal title
observer	CHANDRA engineering request/realtime commanding	Principal investig
object	&#160	Source name
dtcycle	0	&#160
cycle	P	events from which exps? Prim/Second/Both
ra_targ	0.0	Observer's specified target RA [deg]
dec_targ	0.0	Observer's specified target Dec [deg]
ra_nom	177.99682122143	Nominal RA [deg]
dec_nom	-5.9715503129923	Nominal Dec [deg]
roll_nom	63.577563043416	Nominal Roll [deg]
revision	3	Processing version of data
ontime	6852.214017123	Sum of GTIs [s]
livetime	6765.4471573302	Livetime [s]
ontime4	2588.4856543392	Sum of GTIs [s]
ontime5	7318.9119970948	Sum of GTIs [s]
ontime6	2830.1472058296	Sum of GTIs [s]
ontime7	6852.214017123	Sum of GTIs [s]
ontime8	2885.2443774641	Sum of GTIs [s]
ontime9	2723.1928861737	Sum of GTIs [s]
l2events	1315103	Number of level 2 events

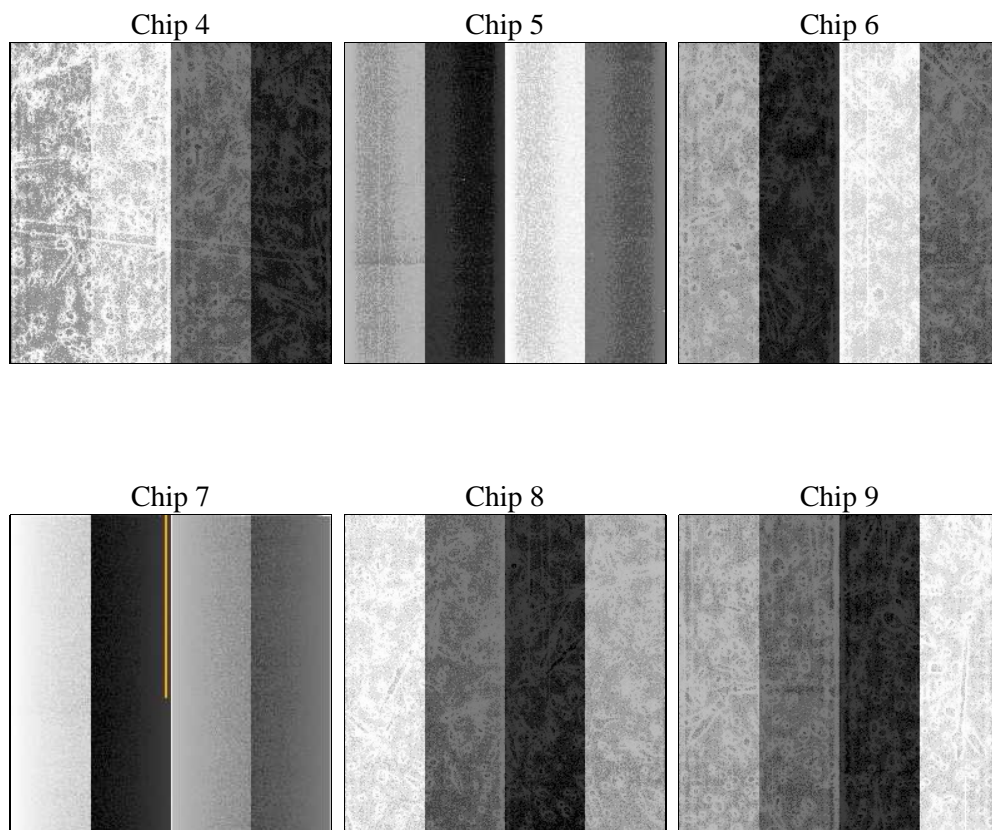
## 2 OBI

### 2.1 OBI

#### 2.1.1 Images



#### 2.1.2 Bias



### 2.1.3 Parameters

obi_num	0	Obi number	sched_exp_time	0.0	[s] Scheduled observation exposure time
ascdsver	8.4.5	Processing system revision	ontime	6852.214017123	Sum of GTIs [s]
caldsver	4.5.2	&#160	ontime4	2588.4856543392	Sum of GTIs [s]
date	2012-09-30T09:35:48	Date and time of file creation	ontime5	7318.9119970948	Sum of GTIs [s]
revision	3	Processing version of data	ontime6	2830.1472058296	Sum of GTIs [s]
			ontime7	6852.214017123	Sum of GTIs [s]
			ontime8	2885.2443774641	Sum of GTIs [s]
			ontime9	2723.1928861737	Sum of GTIs [s]
			l1events	1543639	Number of level 1 events

### 2.1.4 Events

	ccd 4	ccd 5	ccd 6	ccd 7	ccd 8	ccd 9		ccd 4	ccd 5	ccd 6	ccd 7	ccd 8	ccd 9
level 1 events	159435	415161	183251	425014	189655	171123	grade 0 events	78671	87230	89051	99113	91654	82281
rejected events	20664	50727	19918	35124	22803	20265		49%	21%	48%	23%	48%	48%
rejected %	12%	12%	10%	8%	12%	11%	grade 1 events	426	283	438	228	446	413
								0%	0%	0%	0%	0%	0%
							grade 2 events	24636	132136	28296	86232	29506	27010
								15%	31%	15%	20%	15%	15%
							grade 3 events	8407	22589	10080	39984	10588	9354
								5%	5%	5%	9%	5%	5%
							grade 4 events	8351	22655	9896	39010	10618	9255
								5%	5%	5%	9%	5%	5%
							grade 5 events	1339	9633	1536	7083	1786	1541
								0%	2%	0%	1%	0%	0%
							grade 6 events	18706	99824	26010	125551	24486	22958
								11%	24%	14%	29%	12%	13%
							grade 7 events	18899	40811	17944	27813	20571	18311
								11%	9%	9%	6%	10%	10%

## 2.2 Compared Parameters

Parameter	Planned	Actual	Parameter	Planned	Actual
Instrument	ACIS	ACIS	Obspar format version number	7	7
Detector	ACIS-456789	ACIS-456789	Obspar file type	PREDICTED	ACTUAL
Grating	NONE	NONE	Obspar update status	NONE	UPDATED
Data mode	FAINT	FAINT	On-chip summing requested	N	N
Observation mode	SECONDARY	SECONDARY	Subarray requested	NONE	NONE
[deg] Pointing RA	0	177.9968212214303	Alternating exposures requested	N	N
[deg] Pointing Dec	0	-5.97155031299232	[s] Primary exposure time	0.000000	3.2
[deg] Pointing Roll	0.0	63.57756304341565			
[mm] SIM focus pos	-0.684267	-0.6828225247311905			
[mm] SIM defocus	0	0.8505141146731063			
[mm] SIM translation stage pos	-190.132523	250.466033080201			
[mm] SIM translation stage offset	0	-0.01005468664627074			
[s] Observation start time (MET)	127509950.494	127509949.72578			
Observation start date	2002-01-15T19:25:50	2002-01-15T19:25:49			
[s] Observation end time (MET)	127531262.295	127531261.52664			
Observation end date	2002-01-16T01:21:02	2002-01-16T01:21:01			
Read mode	TIMED	TIMED			

## **2.3 Star Slots**

## **2.4 FID Slots**

## A Summary

### A.1 Status

V&V Scientist	Beth Sundheim
V&V Date (YYYY-MM-DD)	2012.10.02
V&V Edition	1
V&V Disposition and Status	OK
V&V Charge Time	6.852214017123

### A.2 Comments