

# V&V Reference Report

## L2 ASCDS Version : 7.6.9

Observation 61208 - L2 Version 001  
Chandra X-Ray Center

L2 Processing Date : Sep 15 2006

## Contents

<b>1</b>	<b>Front</b>	<b>2</b>
<b>2</b>	<b>OBI</b>	<b>3</b>
2.1	OBI . . . . .	3
2.1.1	Images . . . . .	3
2.1.2	Bias . . . . .	3
2.1.3	Parameters . . . . .	4
2.1.4	Events . . . . .	4
2.2	Compared Parameters . . . . .	5
2.3	Aspect . . . . .	6
2.4	Star Slots . . . . .	8
2.5	FID Slots . . . . .	8
<b>A</b>	<b>Summary</b>	<b>9</b>
A.1	Status . . . . .	9
A.2	Comments . . . . .	9

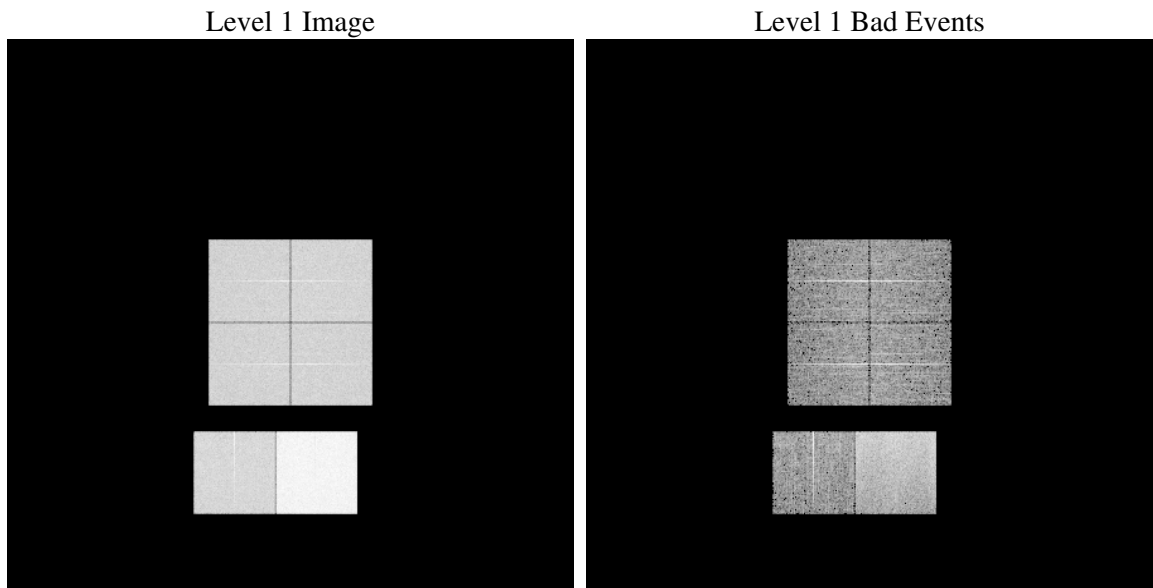
# 1 Front

seq_num	&#160
obs_id	61208
title	ACIS-012367 diagnostics
observer	CHANDRA engineering request/realtime commanding
object	&#160
dtcycle	0
cycle	P
ra_targ	0.0
dec_targ	0.0
ra_nom	180.50460379039
dec_nom	-0.028244304485127
roll_nom	246.44888346221
revision	2
ontime	8399.9999687076
livetime	8293.634111231
ontime0	3564.5573309064
ontime1	3713.684805125
ontime2	3489.9168097377
ontime3	3499.6544907689
ontime6	3839.9477140903
ontime7	8399.9999687076
l2events	1294182

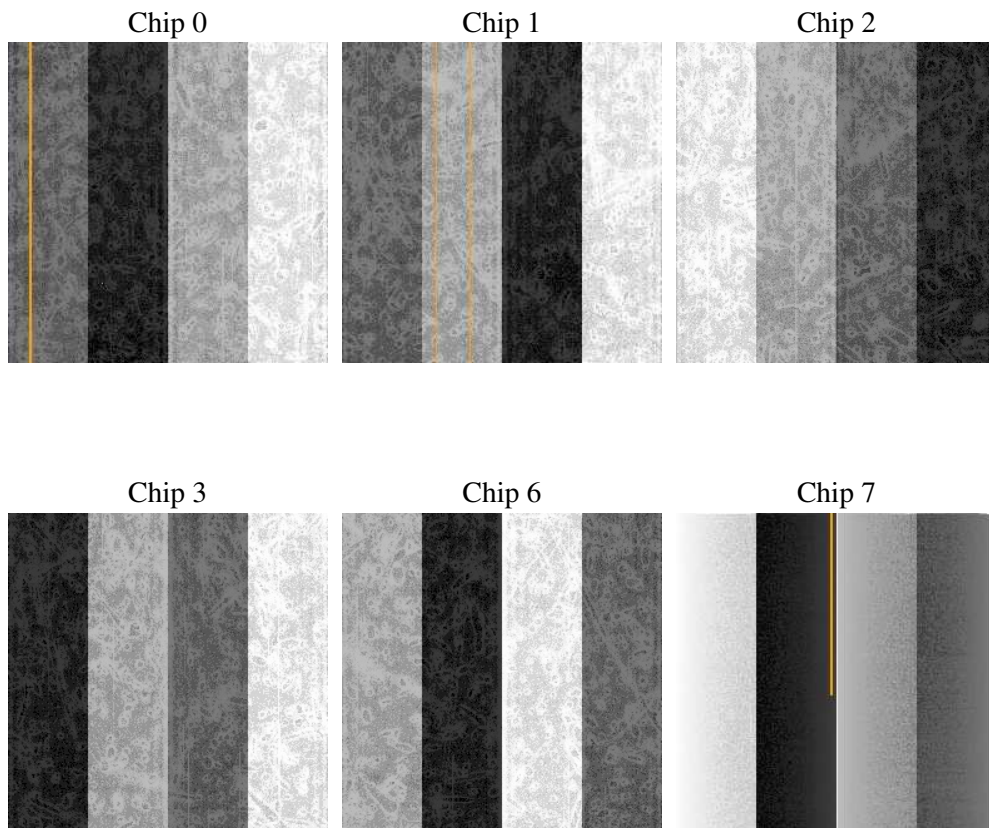
## 2 OBI

### 2.1 OBI

#### 2.1.1 Images



#### 2.1.2 Bias



### 2.1.3 Parameters

obi_num	0
ascdsver	7.6.9
caldbver	3.2.3
date	2006-09-15T07:09:34
revision	2

sched_exp_time	0.0
ontime	8462.2560147047
ontime0	3587.8252723515
ontime1	3743.3937267363
ontime2	3519.7631033659
ontime3	3529.4865623116
ontime6	3876.2759881616
ontime7	8462.2560147047
l1events	1560243

### 2.1.4 Events

	ccd 0	ccd 1	ccd 2	ccd 3	ccd 6	ccd 7
level 1 events	206303	214553	205397	207331	232937	493722
rejected events	27402	27507	27512	29435	30771	67489
rejected %	13%	12%	13%	14%	13%	13%

	ccd 0	ccd 1	ccd 2	ccd 3	ccd 6	ccd 7
grade 0 events	98980	103891	99944	100652	111037	75416
	47%	48%	48%	48%	47%	15%
grade 1 events	578	498	460	534	514	167
	0%	0%	0%	0%	0%	0%
grade 2 events	32195	33443	31632	31112	35229	131409
	15%	15%	15%	15%	15%	26%
grade 3 events	11429	11639	11345	11353	12756	31430
	5%	5%	5%	5%	5%	6%
grade 4 events	11272	11985	11050	11143	12396	30845
	5%	5%	5%	5%	5%	6%
grade 5 events	1802	1825	1669	1907	2139	8453
	0%	0%	0%	0%	0%	1%
grade 6 events	26175	27492	25480	25061	32625	160314
	12%	12%	12%	12%	14%	32%
grade 7 events	23872	23780	23817	25569	26241	55688
	11%	11%	11%	12%	11%	11%

## 2.2 Compared Parameters

Parameter	Planned	Actual	Parameter	Planned	Actual
Instrument	ACIS	ACIS	Obspar format version number	6	6
Detector	ACIS-012367	ACIS-012367	Obspar file type	PREDICTED	ACTUAL
Grating	NONE	NONE	Obspar update status	NONE	UPDATED
Data mode	FAINT	FAINT	On-chip summing requested	N	N
Observation mode	SECONDARY	SECONDARY	Subarray requested	NONE	NONE
Pointing RA	0	180.5046037903949	Alternating exposures requested	N	N
Pointing Dec	0	-0.02824430448512663	Primary exposure time	3.2	3.2
Pointing Roll	0.0	246.448883462207			
SIM focus pos (mm)	-0.782348	-0.6828225247311905			
SIM defocus (mm)	0	0.8505141146731063			
SIM translation stage pos (mm)	-233.592463	250.466033080201			
SIM translation stage offset (mm)	0	-0.01005468664627074			
Observation start time	137334237.89837	137334236.87365			
Observation start date	2002-05-09T12:23:58	2002-05-09T12:23:56			
Observation end time	137355547.649239	137355546.62451			
Observation end date	2002-05-09T18:19:08	2002-05-09T18:19:06			
Read mode	TIMED	TIMED			

## 2.3 Aspect



## 2.4 Star Slots

## 2.5 FID Slots

## A Summary

### A.1 Status

V&V Scientist	Doug Morgan
V&V Date (YYYY-MM-DD)	2006.09.15
V&V Edition	1
V&V Disposition and Status	OK
V&V Charge Time	8.39999996

### A.2 Comments