

# V&V Reference Report

## L2 ASCDS Version : 8.4.5

Observation 61178 - L2 Version 3  
Chandra X-Ray Center

L2 Processing Date : Oct 8 2012

## Contents

<b>1</b>	<b>Front</b>	<b>2</b>
<b>2</b>	<b>OBI</b>	<b>3</b>
2.1	OBI . . . . .	3
2.1.1	Images . . . . .	3
2.1.2	Bias . . . . .	3
2.1.3	Parameters . . . . .	4
2.1.4	Events . . . . .	4
2.2	Compared Parameters . . . . .	5
2.3	Star Slots . . . . .	6
2.4	FID Slots . . . . .	6
<b>A</b>	<b>Summary</b>	<b>7</b>
A.1	Status . . . . .	7
A.2	Comments . . . . .	7

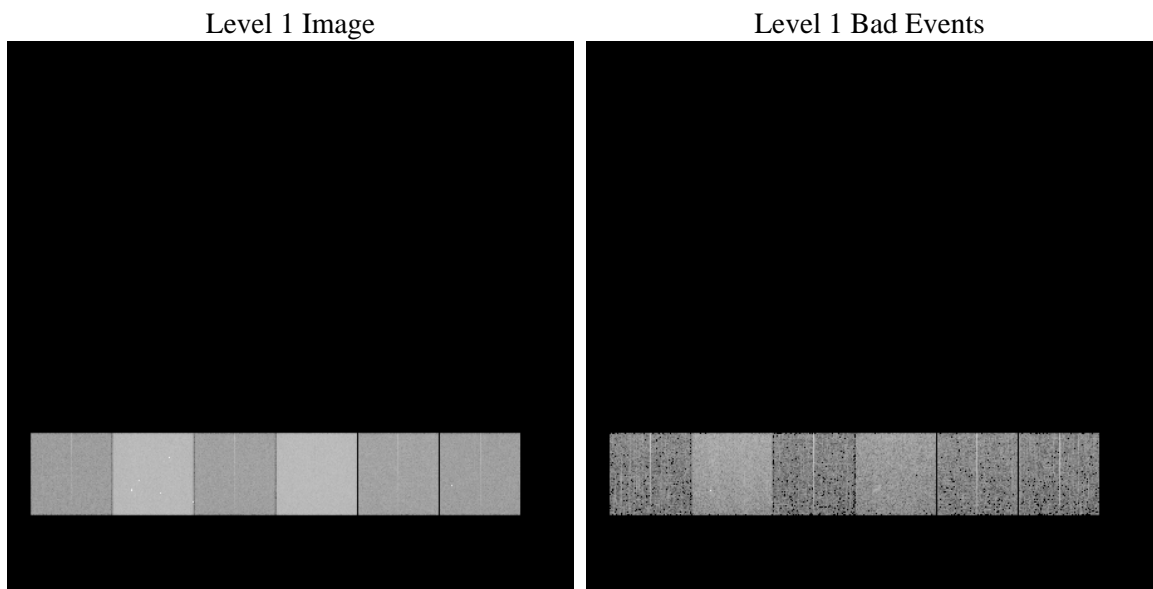
# 1 Front

seq_num	&#160	Sequence number
obs_id	61178	Observation id
title	ACIS-456789 diagnostics	Proposal title
observer	CHANDRA engineering request/realtime commanding	Principal investig
object	&#160	Source name
dtcycle	0	&#160
cycle	P	events from which exps? Prim/Second/Both
ra_targ	0.0	Observer's specified target RA [deg]
dec_targ	0.0	Observer's specified target Dec [deg]
ra_nom	161.00241534478	Nominal RA [deg]
dec_nom	-11.028526688678	Nominal Dec [deg]
roll_nom	241.95640811336	Nominal Roll [deg]
revision	3	Processing version of data
ontime	7016.0171999037	Sum of GTIs [s]
livetime	6927.1761655802	Livetime [s]
ontime4	2534.4906022549	Sum of GTIs [s]
ontime5	7553.9753536582	Sum of GTIs [s]
ontime6	2751.639454484	Sum of GTIs [s]
ontime7	7016.0171999037	Sum of GTIs [s]
ontime8	2926.6549565196	Sum of GTIs [s]
ontime9	2673.8546540439	Sum of GTIs [s]
l2events	1216239	Number of level 2 events

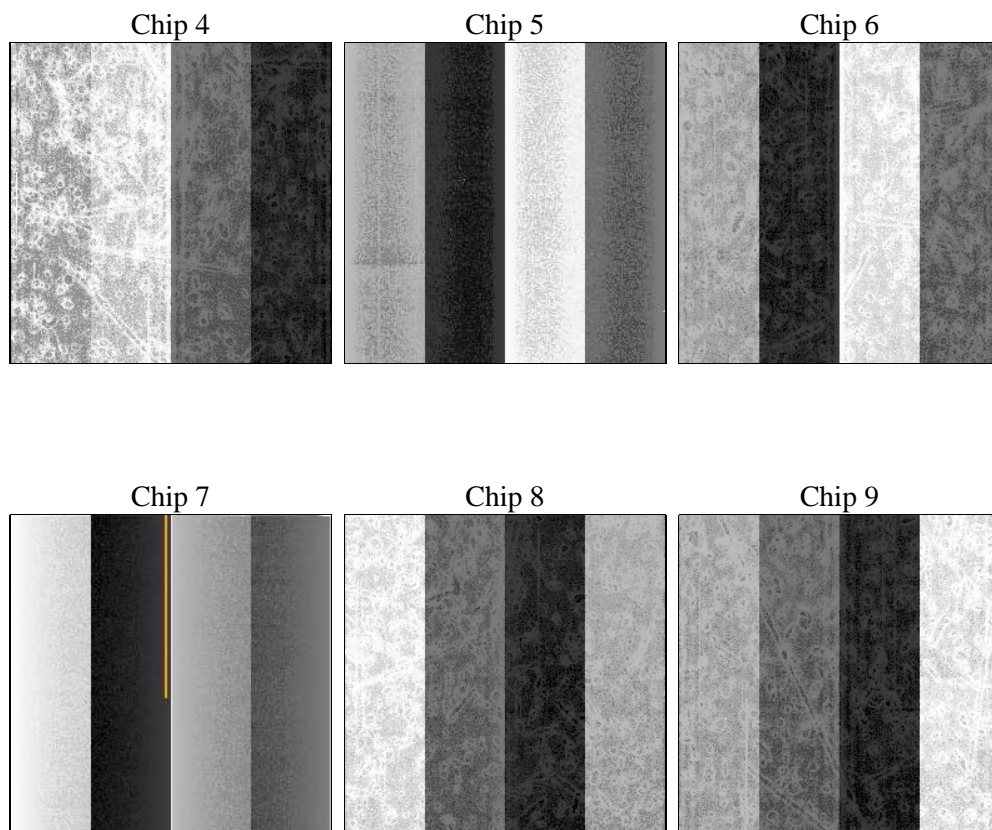
## 2 OBI

### 2.1 OBI

#### 2.1.1 Images



#### 2.1.2 Bias



### 2.1.3 Parameters

obi_num	0	Obi number	sched_exp_time	0.0	[s] Scheduled observation exposure time
ascdsver	8.4.5	Processing system revision	ontime	7016.0171999037	Sum of GTIs [s]
caldbver	4.5.2	&#160	ontime4	2534.4906022549	Sum of GTIs [s]
date	2012-10-08T13:24:20	Date and time of file creation	ontime5	7553.9753536582	Sum of GTIs [s]
revision	3	Processing version of data	ontime6	2751.639454484	Sum of GTIs [s]
			ontime7	7016.0171999037	Sum of GTIs [s]
			ontime8	2926.6549565196	Sum of GTIs [s]
			ontime9	2673.8546540439	Sum of GTIs [s]
			l1events	1447571	Number of level 1 events

### 2.1.4 Events

	ccd 4	ccd 5	ccd 6	ccd 7	ccd 8	ccd 9		ccd 4	ccd 5	ccd 6	ccd 7	ccd 8	ccd 9
level 1 events	144339	399520	164158	406428	177722	155404	grade 0 events	69532	83799	78712	93858	84502	73854
rejected events	21064	51920	20314	37909	23462	20962		48%	20%	47%	23%	47%	47%
rejected %	14%	12%	12%	9%	13%	13%	grade 1 events	386	262	355	268	388	379
								0%	0%	0%	0%	0%	0%
							grade 2 events	21856	123775	24842	81867	27303	23858
								15%	30%	15%	20%	15%	15%
							grade 3 events	7611	21998	8768	37245	9902	8230
								5%	5%	5%	9%	5%	5%
							grade 4 events	7605	21808	8881	36973	9679	8263
								5%	5%	5%	9%	5%	5%
							grade 5 events	1267	9448	1581	7505	1715	1494
								0%	2%	0%	1%	0%	0%
							grade 6 events	16671	96220	22641	118576	22874	20237
								11%	24%	13%	29%	12%	13%
							grade 7 events	19411	42210	18378	30136	21359	19089
								13%	10%	11%	7%	12%	12%

## 2.2 Compared Parameters

Parameter	Planned	Actual	Parameter	Planned	Actual
Instrument	ACIS	ACIS	Obspar format version number	7	7
Detector	ACIS-456789	ACIS-456789	Obspar file type	PREDICTED	ACTUAL
Grating	NONE	NONE	Obspar update status	NONE	UPDATED
Data mode	FAINT	FAINT	On-chip summing requested	N	N
Observation mode	SECONDARY	SECONDARY	Subarray requested	NONE	NONE
[deg] Pointing RA	0	161.0024153447777	Alternating exposures requested	N	N
[deg] Pointing Dec	0	-11.02852668867806	[s] Primary exposure time	0.000000	3.2
[deg] Pointing Roll	0.0	241.9564081133591			
[mm] SIM focus pos	-0.684267	-0.6828225247311905			
[mm] SIM defocus	0	0.8505141146731063			
[mm] SIM translation stage pos	-190.132523	250.466033080201			
[mm] SIM translation stage offset	0	-0.01005468664627074			
[s] Observation start time (MET)	139356189.881	139356188.85614			
Observation start date	2002-06-01T22:03:10	2002-06-01T22:03:08			
[s] Observation end time (MET)	139390580.682	139390579.65754			
Observation end date	2002-06-02T07:36:21	2002-06-02T07:36:19			
Read mode	TIMED	TIMED			

## **2.3 Star Slots**

## **2.4 FID Slots**

## A Summary

### A.1 Status

V&V Scientist	Beth Sundheim
V&V Date (YYYY-MM-DD)	2012.10.18
V&V Edition	1
V&V Disposition and Status	OK
V&V Charge Time	7.0160171999037

### A.2 Comments