

# V&V Reference Report

## L2 ASCDS Version : 7.6.9

Observation 61168 - L2 Version 001  
Chandra X-Ray Center

L2 Processing Date : Sep 19 2006

## Contents

<b>1</b>	<b>Front</b>	<b>2</b>
<b>2</b>	<b>OBI</b>	<b>3</b>
2.1	OBI . . . . .	3
2.1.1	Images . . . . .	3
2.1.2	Bias . . . . .	3
2.1.3	Parameters . . . . .	4
2.1.4	Events . . . . .	4
2.2	Compared Parameters . . . . .	5
2.3	Aspect . . . . .	6
2.4	Star Slots . . . . .	8
2.5	FID Slots . . . . .	8
<b>A</b>	<b>Summary</b>	<b>9</b>
A.1	Status . . . . .	9
A.2	Comments . . . . .	9

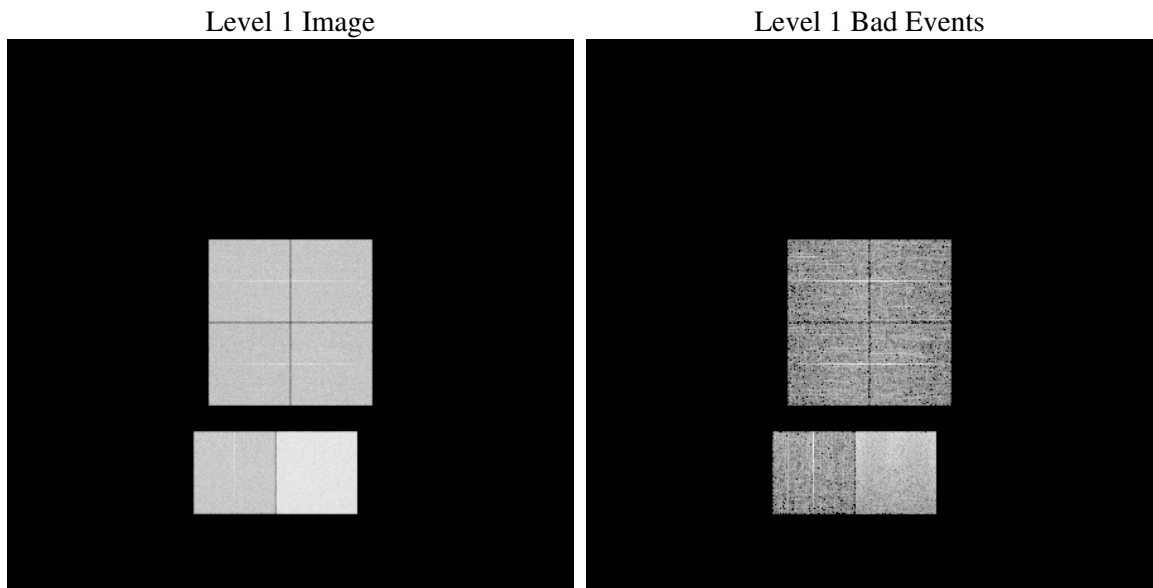
# 1 Front

seq_num	&#160
obs_id	61168
title	ACIS-012367 diagnostics
observer	CHANDRA engineering request/realtime commanding
object	&#160
dtcycle	0
cycle	P
ra_targ	0.0
dec_targ	0.0
ra_nom	351.9758349539
dec_nom	-11.483939758323
roll_nom	113.04484639328
revision	2
ontime	7794.0199752152
livetime	7695.3274012936
ontime0	3499.7700146139
ontime1	3496.5692073405
ontime2	3224.3656083643
ontime3	3412.1803927124
ontime6	3661.9424930811
ontime7	7794.0199752152
l2events	1210110

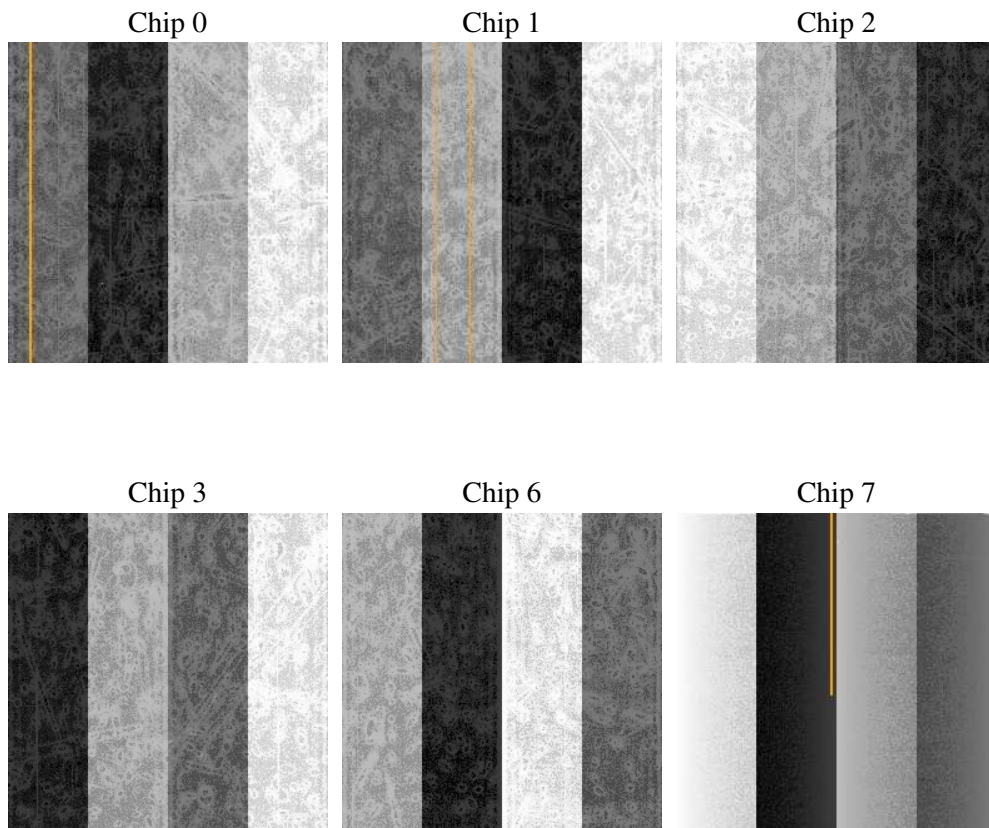
## 2 OBI

### 2.1 OBI

#### 2.1.1 Images



#### 2.1.2 Bias



### 2.1.3 Parameters

obi_num	0
ascdsver	7.6.9
caldbver	3.2.3
date	2006-09-19T21:24:07
revision	2

sched_exp_time	0.0
ontime	7794.6066986024
ontime0	3500.3156979978
ontime1	3497.0738507211
ontime2	3224.8292117417
ontime3	3412.8081561029
ontime6	3662.3650564849
ontime7	7794.6066986024
l1events	1438839

### 2.1.4 Events

	ccd 0	ccd 1	ccd 2	ccd 3	ccd 6	ccd 7
level 1 events	197717	197184	185611	195850	217514	444963
rejected events	24073	23546	24027	24520	25993	53383
rejected %	12%	11%	12%	12%	11%	11%

	ccd 0	ccd 1	ccd 2	ccd 3	ccd 6	ccd 7
grade 0 events	95340	95657	89830	95666	104169	73963
	48%	48%	48%	48%	47%	16%
grade 1 events	457	457	440	522	493	160
	0%	0%	0%	0%	0%	0%
grade 2 events	30920	30857	28337	30067	33070	116232
	15%	15%	15%	15%	15%	26%
grade 3 events	10921	11037	10177	10739	11745	30098
	5%	5%	5%	5%	5%	6%
grade 4 events	10906	11033	10095	10951	11918	29477
	5%	5%	5%	5%	5%	6%
grade 5 events	1631	1687	1518	1764	1932	7324
	0%	0%	0%	0%	0%	1%
grade 6 events	25557	25054	23145	23907	30619	141810
	12%	12%	12%	12%	14%	31%
grade 7 events	21985	21402	22069	22234	23568	45899
	11%	10%	11%	11%	10%	10%

## 2.2 Compared Parameters

Parameter	Planned	Actual	Parameter	Planned	Actual
Instrument	ACIS	ACIS	Obspar format version number	6	6
Detector	ACIS-012367	ACIS-012367	Obspar file type	PREDICTED	ACTUAL
Grating	NONE	NONE	Obspar update status	NONE	UPDATED
Data mode	FAINT	FAINT	On-chip summing requested	N	N
Observation mode	SECONDARY	SECONDARY	Subarray requested	NONE	NONE
Pointing RA	0	351.9758349539039	Alternating exposures requested	N	N
Pointing Dec	0	-11.48393975832323	Primary exposure time	0.000000	3.2
Pointing Roll	0.0	113.0448463932826			
SIM focus pos (mm)	-0.782348	-0.6828225247311905			
SIM defocus (mm)	0	0.8505141146731063			
SIM translation stage pos (mm)	-233.592463	250.466033080201			
SIM translation stage offset (mm)	0	-0.01005468664627074			
Observation start time	140266215.668	140266214.64334			
Observation start date	2002-06-12T10:50:16	2002-06-12T10:50:14			
Observation end time	140278093.369	140278092.34382			
Observation end date	2002-06-12T14:08:13	2002-06-12T14:08:12			
Read mode	TIMED	TIMED			

## 2.3 Aspect



## **2.4 Star Slots**

## **2.5 FID Slots**



## A Summary

### A.1 Status

V&V Scientist	Jen Lauer
V&V Date (YYYY-MM-DD)	2006.09.20
V&V Edition	1
V&V Disposition and Status	OK
V&V Charge Time	7.79401997

### A.2 Comments