

V&V Reference Report

L2 ASCDS Version : 7.6.9

Observation 61028 - L2 Version 001
Chandra X-Ray Center

L2 Processing Date : Oct 4 2006

Contents

1	Front	2
2	OBI	3
2.1	OBI	3
2.1.1	Images	3
2.1.2	Bias	3
2.1.3	Parameters	4
2.1.4	Events	4
2.2	Compared Parameters	5
2.3	Aspect	6
2.4	Star Slots	8
2.5	FID Slots	8
A	Summary	9
A.1	Status	9
A.2	Comments	9

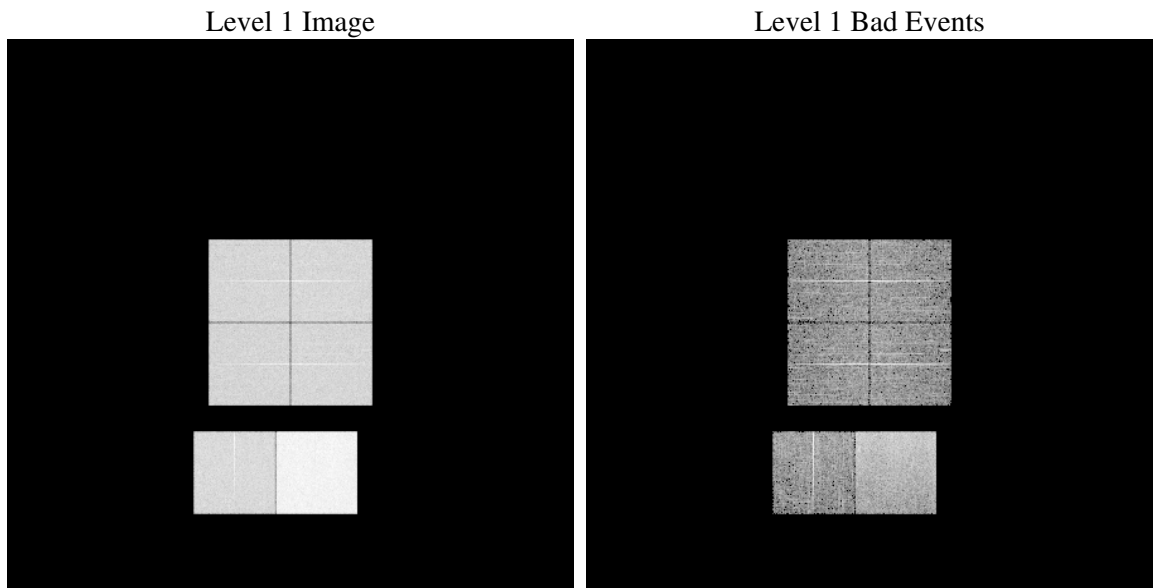
1 Front

seq_num	
obs_id	61028
title	ACIS-012367 diagnostics
observer	CHANDRA engineering request/realtime commanding
object	
dtcycle	0
cycle	P
ra_targ	0.0
dec_targ	0.0
ra_nom	112.88993525004
dec_nom	45.027718085907
roll_nom	71.549812622636
revision	2
ontime	8463.9999684691
livetime	8356.8237044595
ontime0	4040.3664542139
ontime1	4147.3609779179
ontime2	3862.193089366
ontime3	3975.4647802413
ontime6	4231.2954678833
ontime7	8463.9999684691
l2events	1293247

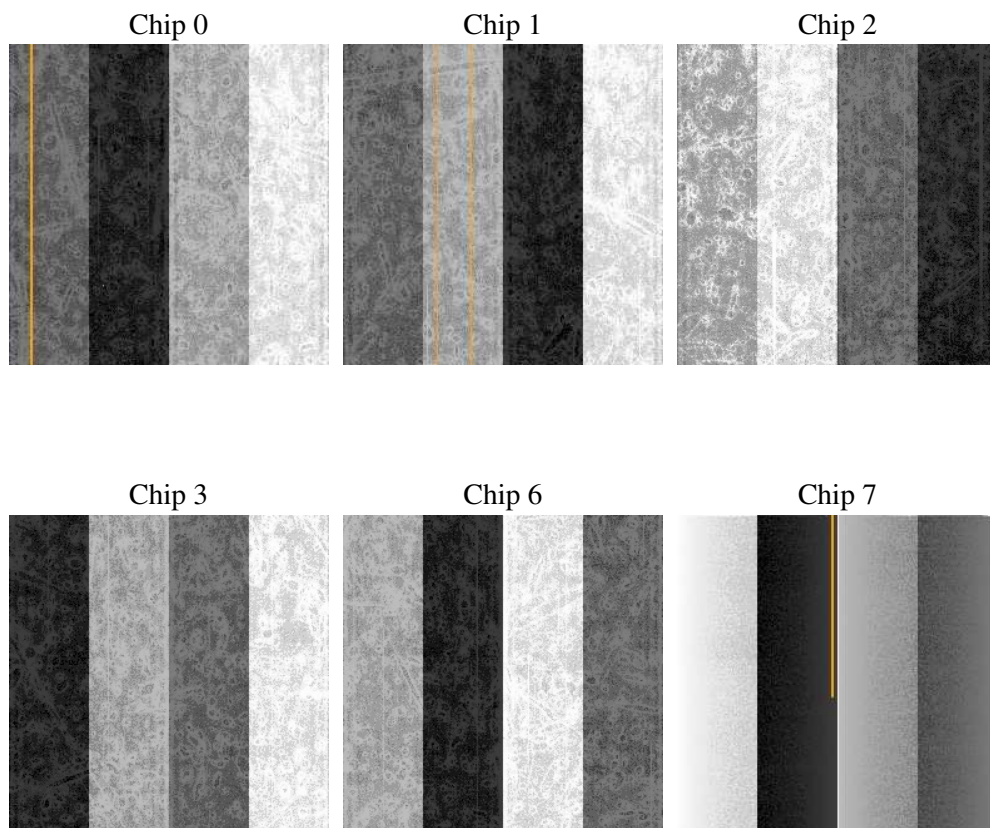
2 OBI

2.1 OBI

2.1.1 Images



2.1.2 Bias



2.1.3 Parameters

obi_num	0
ascdsver	7.6.9
caldbver	3.2.3
date	2006-10-04T20:11:57
revision	2

sched_exp_time	0.0
ontime	8465.4879800379
ontime0	4041.5643815994
ontime1	4148.5178653002
ontime2	3863.3089367449
ontime3	3976.7447876334
ontime6	4232.7834794521
ontime7	8465.4879800379
l1events	1553568

2.1.4 Events

	ccd 0	ccd 1	ccd 2	ccd 3	ccd 6	ccd 7
level 1 events	215380	221172	208739	215585	236637	456055
rejected events	27536	28216	27481	28531	30256	61012
rejected %	12%	12%	13%	13%	12%	13%

	ccd 0	ccd 1	ccd 2	ccd 3	ccd 6	ccd 7
grade 0 events	104209	105713	102115	105627	112793	69317
	48%	47%	48%	48%	47%	15%
grade 1 events	512	507	629	571	563	183
	0%	0%	0%	0%	0%	0%
grade 2 events	32612	34492	30436	31698	35405	121512
	15%	15%	14%	14%	14%	26%
grade 3 events	11912	12358	11629	11949	12530	28665
	5%	5%	5%	5%	5%	6%
grade 4 events	12117	12124	11723	12236	12719	28006
	5%	5%	5%	5%	5%	6%
grade 5 events	1922	1939	1801	2030	2228	7768
	0%	0%	0%	0%	0%	1%
grade 6 events	26994	28269	25355	25544	32934	147543
	12%	12%	12%	11%	13%	32%
grade 7 events	25102	25770	25051	25930	27465	53061
	11%	11%	12%	12%	11%	11%

2.2 Compared Parameters

Parameter	Planned	Actual	Parameter	Planned	Actual
Instrument	ACIS	ACIS	Obspar format version number	6	6
Detector	ACIS-012367	ACIS-012367	Obspar file type	PREDICTED	ACTUAL
Grating	NONE	NONE	Obspar update status	NONE	UPDATED
Data mode	FAINT	FAINT	On-chip summing requested	N	N
Observation mode	SECONDARY	SECONDARY	Subarray requested	NONE	NONE
Pointing RA	0	112.8899352500375	Alternating exposures requested	N	N
Pointing Dec	0	45.02771808590673	Primary exposure time	3.2	3.2
Pointing Roll	0.0	71.54981262263611			
SIM focus pos (mm)	-0.782348	-0.6828225247311905			
SIM defocus (mm)	0	0.8505141146731063			
SIM translation stage pos (mm)	-233.592463	250.466033080201			
SIM translation stage offset (mm)	0	-0.01005468664627074			
Observation start time	148755741.61726	148755740.59255			
Observation start date	2002-09-18T17:02:22	2002-09-18T17:02:20			
Observation end time	148777051.36814	148777050.34343			
Observation end date	2002-09-18T22:57:31	2002-09-18T22:57:30			
Read mode	TIMED	TIMED			

2.3 Aspect

2.4 Star Slots

2.5 FID Slots

A Summary

A.1 Status

V&V Scientist	Jen Lauer
V&V Date (YYYY-MM-DD)	2006.10.05
V&V Edition	1
V&V Disposition and Status	OK
V&V Charge Time	8.46399996

A.2 Comments

The ACIS focal plane temperature was above calibration limits for the entire observation.