

# V&V Reference Report

## L2 ASCDS Version : 7.6.9

Observation 60918 - L2 Version 001  
Chandra X-Ray Center

L2 Processing Date : Oct 15 2006

## Contents

<b>1</b>	<b>Front</b>	<b>2</b>
<b>2</b>	<b>OBI</b>	<b>3</b>
2.1	OBI . . . . .	3
2.1.1	Images . . . . .	3
2.1.2	Bias . . . . .	3
2.1.3	Parameters . . . . .	4
2.1.4	Events . . . . .	4
2.2	Compared Parameters . . . . .	5
2.3	Aspect . . . . .	6
2.4	Star Slots . . . . .	8
2.5	FID Slots . . . . .	8
<b>A</b>	<b>Summary</b>	<b>9</b>
A.1	Status . . . . .	9
A.2	Comments . . . . .	9

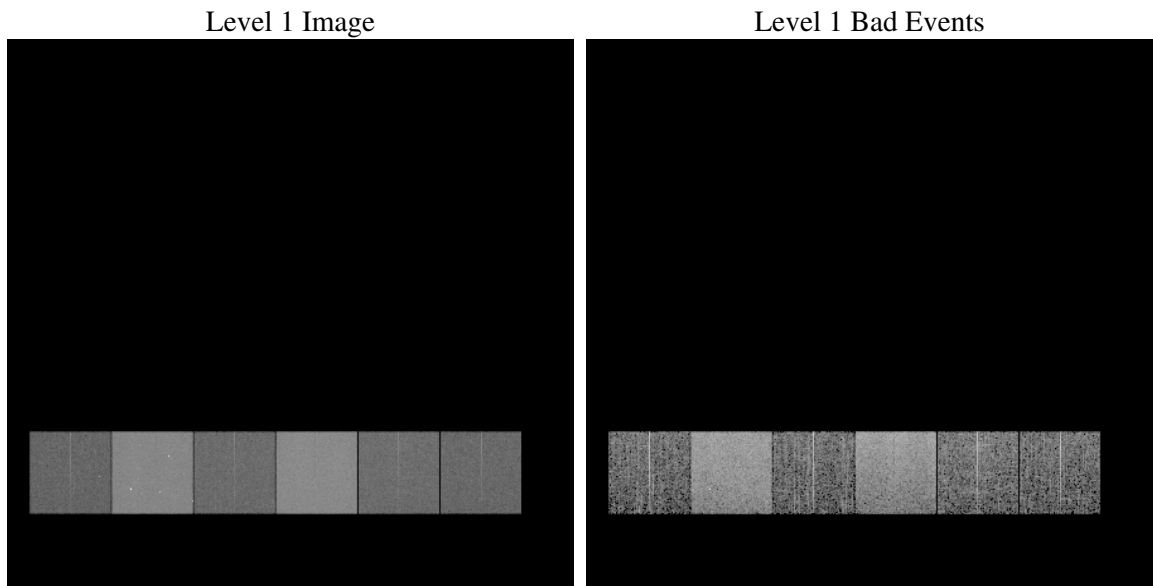
# 1 Front

seq_num	&#160
obs_id	60918
title	ACIS-456789 diagnostics
observer	CHANDRA engineering request/realtime commanding
object	&#160
dtcycle	0
cycle	P
ra_targ	0.0
dec_targ	0.0
ra_nom	116.92488099408
dec_nom	44.583838833721
roll_nom	118.19204119296
revision	2
ontime	7788.7999709845
livetime	7690.1734958996
ontime4	2973.7909547389
ontime5	7788.7999709845
ontime6	3252.4782094359
ontime7	7788.7999709845
ontime8	3387.5383368433
ontime9	3151.8834069967
l2events	1167790

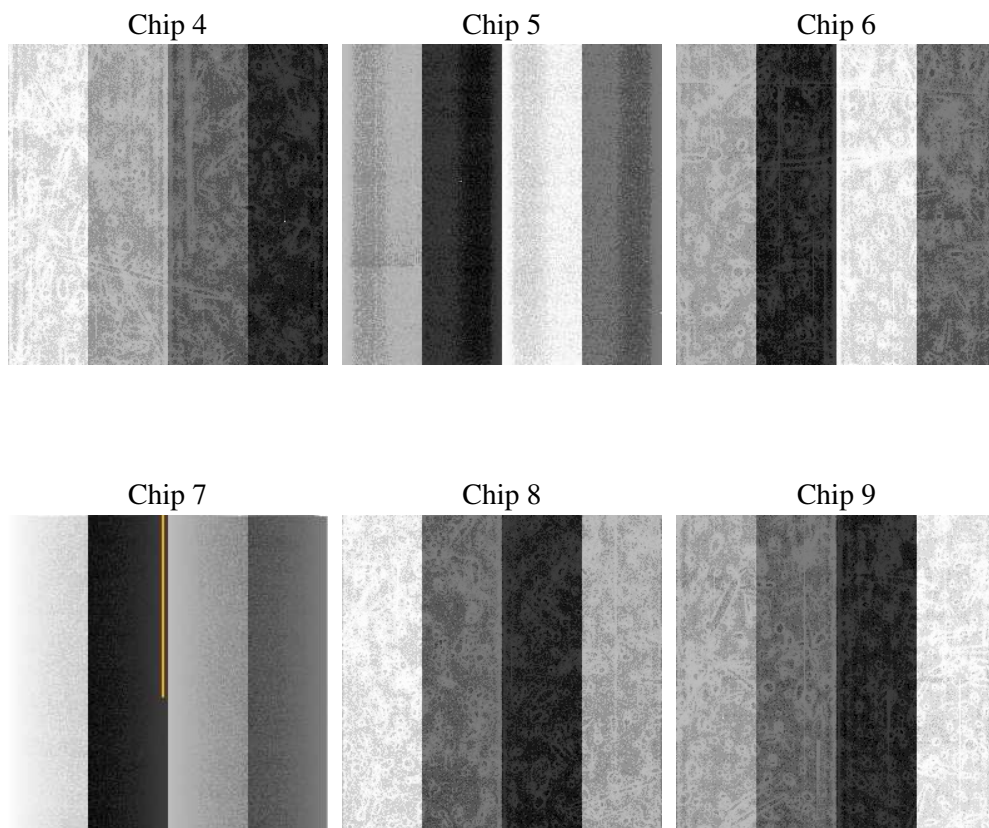
## 2 OBI

### 2.1 OBI

#### 2.1.1 Images



#### 2.1.2 Bias



### 2.1.3 Parameters

obi_num	0
ascdsver	7.6.9
caldbver	3.2.3
date	2006-10-15T09:10:15
revision	2

sched_exp_time	0.0
ontime	7791.3829149008
ontime4	2975.2707598805
ontime5	7791.3829149008
ontime6	3253.9990545809
ontime7	7791.3829149008
ontime8	3390.1212807596
ontime9	3153.5273721516
l1events	1425563

### 2.1.4 Events

	ccd 4	ccd 5	ccd 6	ccd 7	ccd 8	ccd 9
level 1 events	147912	367573	172179	396030	181627	160242
rejected events	22152	57794	22942	51766	25705	21953
rejected %	14%	15%	13%	13%	14%	13%

	ccd 4	ccd 5	ccd 6	ccd 7	ccd 8	ccd 9
grade 0 events	72789	41624	81634	63468	85925	76383
	49%	11%	47%	16%	47%	47%
grade 1 events	519	335	379	160	429	417
	0%	0%	0%	0%	0%	0%
grade 2 events	20159	145957	25906	102889	27209	23668
	13%	39%	15%	25%	14%	14%
grade 3 events	8391	11200	9346	25879	10092	9000
	5%	3%	5%	6%	5%	5%
grade 4 events	8396	11085	9116	25363	10050	8784
	5%	3%	5%	6%	5%	5%
grade 5 events	1427	6474	1648	6862	1868	1628
	0%	1%	0%	1%	1%	1%
grade 6 events	16025	99913	23235	126665	22646	20592
	10%	27%	13%	31%	12%	12%
grade 7 events	20206	50985	20915	44744	23408	19770
	13%	13%	12%	11%	12%	12%

## 2.2 Compared Parameters

Parameter	Planned	Actual	Parameter	Planned	Actual
Instrument	ACIS	ACIS	Obspar format version number	6	6
Detector	ACIS-456789	ACIS-456789	Obspar file type	PREDICTED	ACTUAL
Grating	NONE	NONE	Obspar update status	NONE	UPDATED
Data mode	FAINT	FAINT	On-chip summing requested	N	N
Observation mode	SECONDARY	SECONDARY	Subarray requested	NONE	NONE
Pointing RA	0	116.9248809940809	Alternating exposures requested	N	N
Pointing Dec	0	44.58383883372139	Primary exposure time	0.000000	3.2
Pointing Roll	0.0	118.1920411929555			
SIM focus pos (mm)	-0.684267	-0.6828225247311905			
SIM defocus (mm)	0	0.8505141146731063			
SIM translation stage pos (mm)	-190.132523	250.466033080201			
SIM translation stage offset (mm)	0	-0.01005468664627074			
Observation start time	156493708.838858	156493707.81412			
Observation start date	2002-12-17T06:28:29	2002-12-17T06:28:27			
Observation end time	156523526.090102	156523525.06537			
Observation end date	2002-12-17T14:45:26	2002-12-17T14:45:25			
Read mode	TIMED	TIMED			

## 2.3 Aspect



## **2.4 Star Slots**

## **2.5 FID Slots**



## A Summary

### A.1 Status

V&V Scientist	Beth Sundheim
V&V Date (YYYY-MM-DD)	2006.10.15
V&V Edition	1
V&V Disposition and Status	OK
V&V Charge Time	7.78879997

### A.2 Comments