

V&V Reference Report

L2 ASCDS Version : 8.4.5

Observation 60888 - L2 Version 3
Chandra X-Ray Center

L2 Processing Date : Oct 20 2012

Contents

1	Front	2
2	OBI	3
2.1	OBI	3
2.1.1	Images	3
2.1.2	Bias	3
2.1.3	Parameters	4
2.1.4	Events	4
2.2	Compared Parameters	5
2.3	Star Slots	6
2.4	FID Slots	6
A	Summary	7
A.1	Status	7
A.2	Comments	7

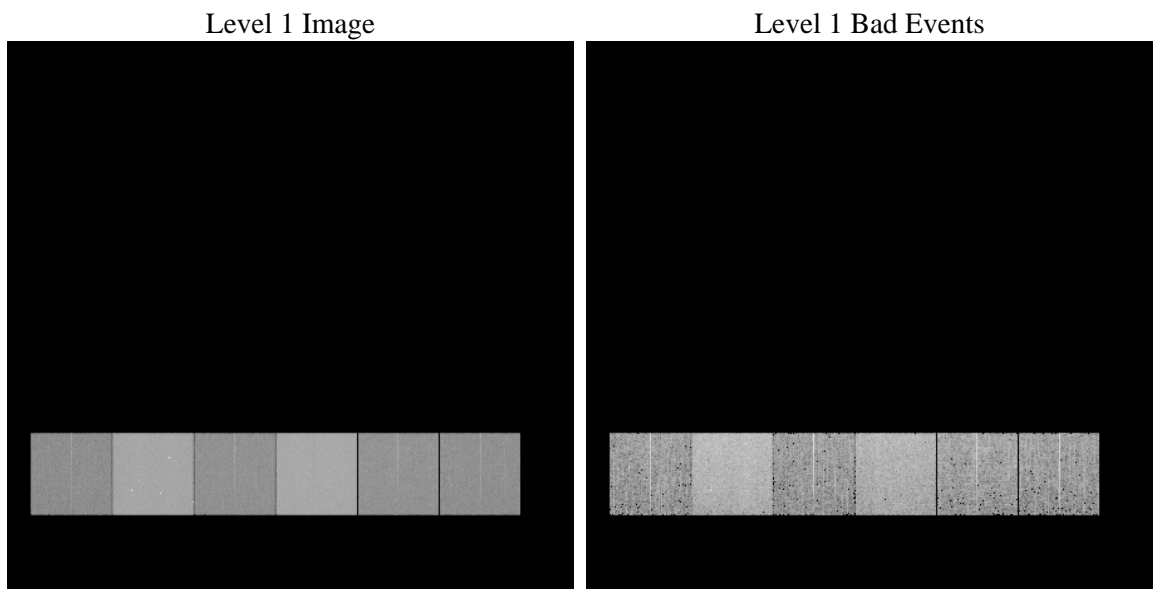
1 Front

seq_num	 	Sequence number
obs_id	60888	Observation id
title	ACIS-456789 diagnostics	Proposal title
observer	CHANDRA engineering request/realtime commanding	Principal investig
object	 	Source name
dtcycle	0	
cycle	P	events from which exps? Prim/Second/Both
ra_targ	0.0	Observer's specified target RA [deg]
dec_targ	0.0	Observer's specified target Dec [deg]
ra_nom	109.88257736926	Nominal RA [deg]
dec_nom	77.985118448953	Nominal Dec [deg]
roll_nom	178.49191355161	Nominal Roll [deg]
revision	3	Processing version of data
ontime	8354.9394498765	Sum of GTIs [s]
livetime	8249.1441758217	Livetime [s]
ontime4	3253.9983735681	Sum of GTIs [s]
ontime5	8354.8984098732	Sum of GTIs [s]
ontime6	3523.0038856268	Sum of GTIs [s]
ontime7	8354.9394498765	Sum of GTIs [s]
ontime8	3701.259382844	Sum of GTIs [s]
ontime9	3454.9425742626	Sum of GTIs [s]
l2events	1259901	Number of level 2 events

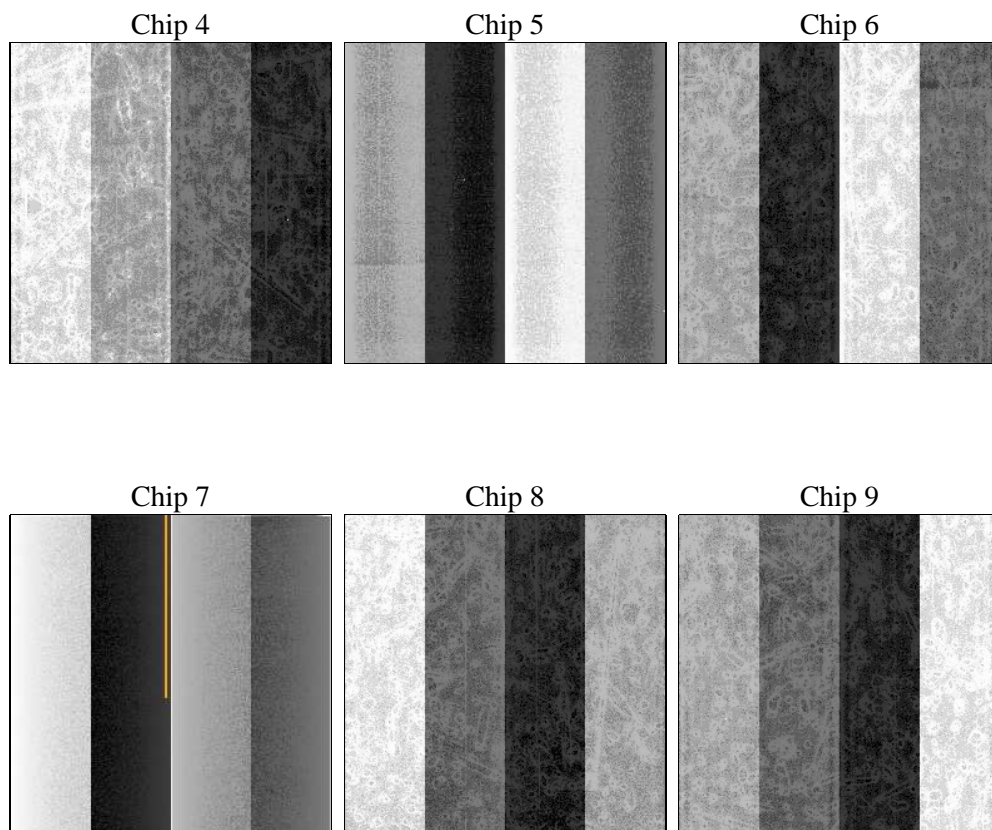
2 OBI

2.1 OBI

2.1.1 Images



2.1.2 Bias



2.1.3 Parameters

obi_num	0	Obi number	sched_exp_time	0.0	[s] Scheduled observation exposure time
ascdsver	8.4.5	Processing system revision	ontime	8354.9394498765	Sum of GTIs [s]
caldsver	4.5.2	 	ontime4	3253.9983735681	Sum of GTIs [s]
date	2012-10-20T14:39:36	Date and time of file creation	ontime5	8354.8984098732	Sum of GTIs [s]
revision	3	Processing version of data	ontime6	3523.0038856268	Sum of GTIs [s]
			ontime7	8354.9394498765	Sum of GTIs [s]
			ontime8	3701.259382844	Sum of GTIs [s]
			ontime9	3454.9425742626	Sum of GTIs [s]
			l1events	1544295	Number of level 1 events

2.1.4 Events

	ccd 4	ccd 5	ccd 6	ccd 7	ccd 8	ccd 9		ccd 4	ccd 5	ccd 6	ccd 7	ccd 8	ccd 9
level 1 events	162577	393426	185908	426932	198821	176631	grade 0 events	79455	78241	87783	95867	92968	83780
rejected events	27518	61450	27106	50077	31643	27272		48%	19%	47%	22%	46%	47%
rejected %	16%	15%	14%	11%	15%	15%	grade 1 events	576	314	498	254	479	472
								0%	0%	0%	0%	0%	0%
							grade 2 events	22003	122175	27813	84364	29573	25677
								13%	31%	14%	19%	14%	14%
							grade 3 events	9131	20359	10070	38567	11118	9629
								5%	5%	5%	9%	5%	5%
							grade 4 events	8866	20192	10067	38322	10876	9569
								5%	5%	5%	8%	5%	5%
							grade 5 events	1637	9942	1878	8621	2097	1893
								1%	2%	1%	2%	1%	1%
							grade 6 events	17336	95172	25191	124460	24717	22279
								10%	24%	13%	29%	12%	12%
							grade 7 events	23573	47031	22608	36477	26993	23332
								14%	11%	12%	8%	13%	13%

2.2 Compared Parameters

Parameter	Planned	Actual	Parameter	Planned	Actual
Instrument	ACIS	ACIS	Obspar format version number	7	7
Detector	ACIS-456789	ACIS-456789	Obspar file type	PREDICTED	ACTUAL
Grating	NONE	NONE	Obspar update status	NONE	UPDATED
Data mode	FAINT	FAINT	On-chip summing requested	N	N
Observation mode	SECONDARY	SECONDARY	Subarray requested	NONE	NONE
[deg] Pointing RA	0	109.8825773692641	Alternating exposures requested	N	N
[deg] Pointing Dec	0	77.98511844895273	[s] Primary exposure time	3.2	3.2
[deg] Pointing Roll	0.0	178.4919135516088			
[mm] SIM focus pos	-0.684267	-0.6828225247311905			
[mm] SIM defocus	0	0.8505141146731063			
[mm] SIM translation stage pos	-190.132523	250.466033080201			
[mm] SIM translation stage offset	0	-0.01005468664627074			
[s] Observation start time (MET)	158353142.966531	158353141.94181			
Observation start date	2003-01-07T18:59:03	2003-01-07T18:59:01			
[s] Observation end time (MET)	158376291.567499	158376290.54278			
Observation end date	2003-01-08T01:24:52	2003-01-08T01:24:50			
Read mode	TIMED	TIMED			

2.3 Star Slots

2.4 FID Slots

A Summary

A.1 Status

V&V Scientist	Beth Sundheim
V&V Date (YYYY-MM-DD)	2012.11.21
V&V Edition	1
V&V Disposition and Status	OK
V&V Charge Time	8.3549394498765

A.2 Comments