

V&V Reference Report

L2 ASCDS Version : 7.6.9

Observation 60868 - L2 Version 001
Chandra X-Ray Center

L2 Processing Date : Sep 19 2006

Contents

1	Front	2
2	OBI	3
2.1	OBI	3
2.1.1	Images	3
2.1.2	Bias	3
2.1.3	Parameters	4
2.1.4	Events	4
2.2	Compared Parameters	5
2.3	Aspect	6
2.4	Star Slots	8
2.5	FID Slots	8
A	Summary	9
A.1	Status	9
A.2	Comments	9

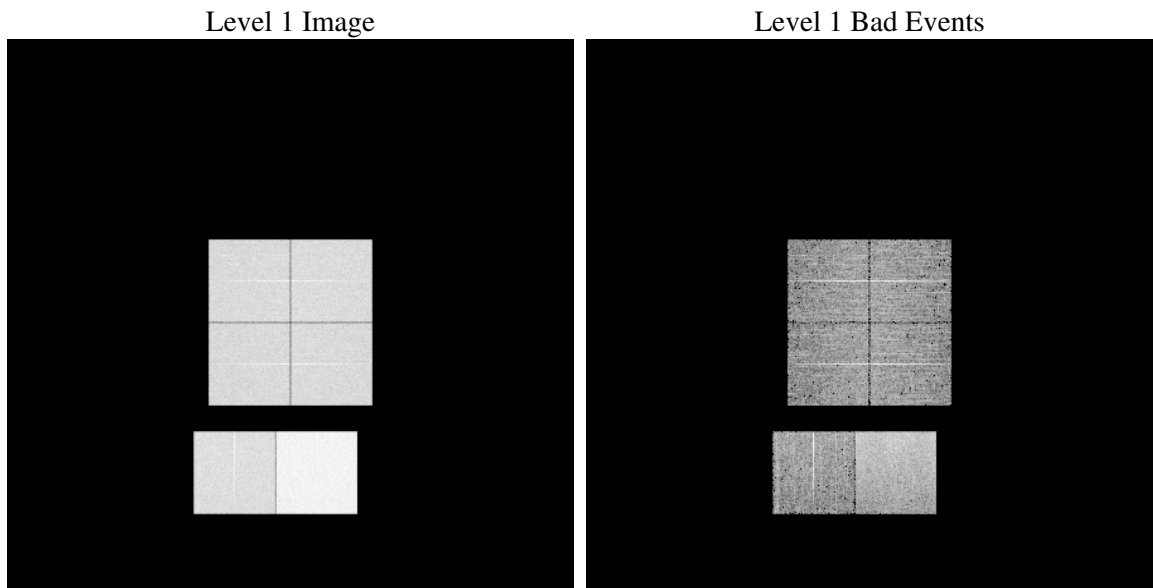
1 Front

seq_num	
obs_id	60868
title	ACIS-012367 diagnostics
observer	CHANDRA engineering request/realtime commanding
object	
dtcycle	0
cycle	P
ra_targ	0.0
dec_targ	0.0
ra_nom	38.722444788579
dec_nom	6.9820871135485
roll_nom	288.31899000227
revision	2
ontime	8466.8195770979
livetime	8359.607609506
ontime0	4532.3244854808
ontime1	4674.9689533412
ontime2	4363.8744686842
ontime3	4418.8069525957
ontime6	4794.966175437
ontime7	8466.8195770979
l2events	1281140

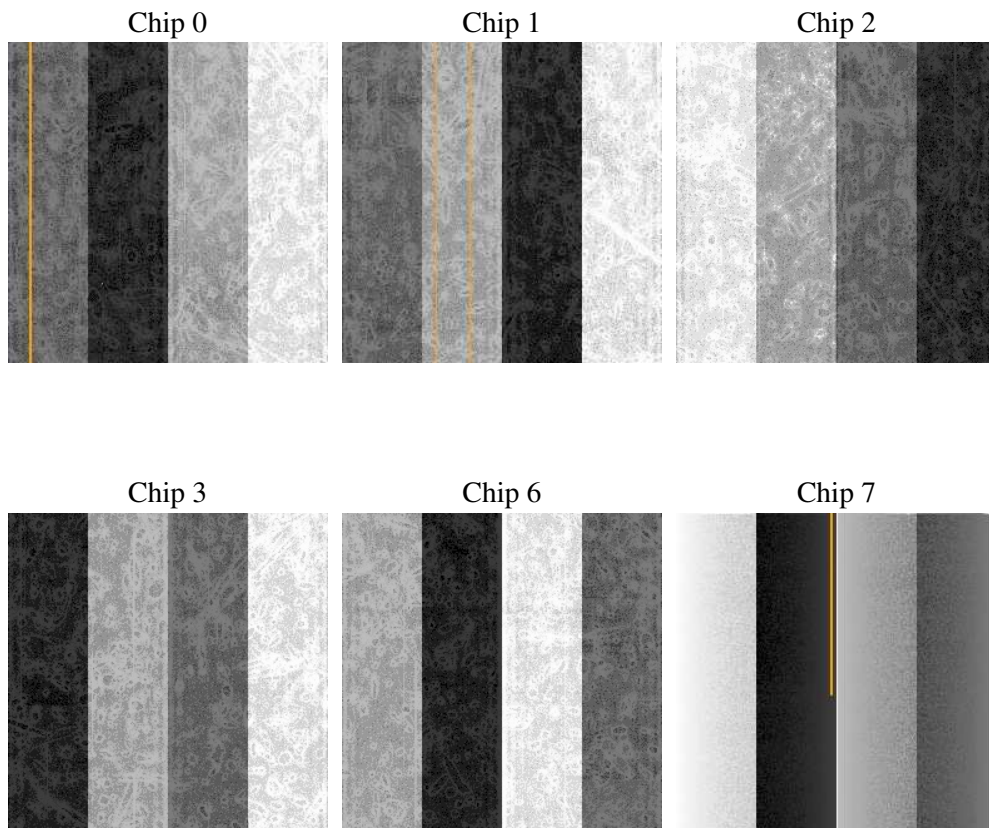
2 OBI

2.1 OBI

2.1.1 Images



2.1.2 Bias



2.1.3 Parameters

obi_num	0
ascdsver	7.6.9
caldbver	3.2.3
date	2006-09-19T20:57:00
revision	2

sched_exp_time	0.0
ontime	8468.7329351306
ontime0	4534.1968035102
ontime1	4676.8002313673
ontime2	4365.664706707
ontime3	4420.7613506317
ontime6	4796.7153734863
ontime7	8468.7329351306
l1events	1546914

2.1.4 Events

	ccd 0	ccd 1	ccd 2	ccd 3	ccd 6	ccd 7
level 1 events	220356	227906	215292	219598	244123	419639
rejected events	29213	30381	28547	30994	31604	56587
rejected %	13%	13%	13%	14%	12%	13%

	ccd 0	ccd 1	ccd 2	ccd 3	ccd 6	ccd 7
grade 0 events	105631	108974	105360	106124	115643	66560
	47%	47%	48%	48%	47%	15%
grade 1 events	558	520	593	628	550	156
	0%	0%	0%	0%	0%	0%
grade 2 events	33554	34720	31580	32166	36761	108874
	15%	15%	14%	14%	15%	25%
grade 3 events	12464	12506	12243	12417	13251	27120
	5%	5%	5%	5%	5%	6%
grade 4 events	12430	12470	12076	12213	13274	26938
	5%	5%	5%	5%	5%	6%
grade 5 events	2038	2095	1875	2109	2372	7541
	0%	0%	0%	0%	0%	1%
grade 6 events	27199	28989	25645	25832	33733	133687
	12%	12%	11%	11%	13%	31%
grade 7 events	26482	27632	25920	28109	28539	48763
	12%	12%	12%	12%	11%	11%

2.2 Compared Parameters

Parameter	Planned	Actual	Parameter	Planned	Actual
Instrument	ACIS	ACIS	Obspar format version number	6	6
Detector	ACIS-012367	ACIS-012367	Obspar file type	PREDICTED	ACTUAL
Grating	NONE	NONE	Obspar update status	NONE	UPDATED
Data mode	FAINT	FAINT	On-chip summing requested	N	N
Observation mode	SECONDARY	SECONDARY	Subarray requested	NONE	NONE
Pointing RA	0	38.7224447885793	Alternating exposures requested	N	N
Pointing Dec	0	6.982087113548469	Primary exposure time	3.2	3.2
Pointing Roll	0.0	288.3189900022662			
SIM focus pos (mm)	-0.782348	-0.6828225247311905			
SIM defocus (mm)	0	0.8505141146731063			
SIM translation stage pos (mm)	-233.592463	250.466033080201			
SIM translation stage offset (mm)	0	-0.01005468664627074			
Observation start time	160179071.89296	160179070.86825			
Observation start date	2003-01-28T22:11:12	2003-01-28T22:11:10			
Observation end time	160202226.643931	160202225.61922			
Observation end date	2003-01-29T04:37:07	2003-01-29T04:37:05			
Read mode	TIMED	TIMED			

2.3 Aspect

2.4 Star Slots

2.5 FID Slots

A Summary

A.1 Status

V&V Scientist	Beth Sundheim
V&V Date (YYYY-MM-DD)	2006.09.20
V&V Edition	1
V&V Disposition and Status	OK
V&V Charge Time	8.46681957

A.2 Comments