

V&V Reference Report

L2 ASCDS Version : 8.4.5

Observation 60808 - L2 Version 3
Chandra X-Ray Center

L2 Processing Date : Oct 24 2012

Contents

1	Front	2
2	OBI	3
2.1	OBI	3
2.1.1	Images	3
2.1.2	Bias	3
2.1.3	Parameters	4
2.1.4	Events	4
2.2	Compared Parameters	5
2.3	Star Slots	6
2.4	FID Slots	6
A	Summary	7
A.1	Status	7
A.2	Comments	7

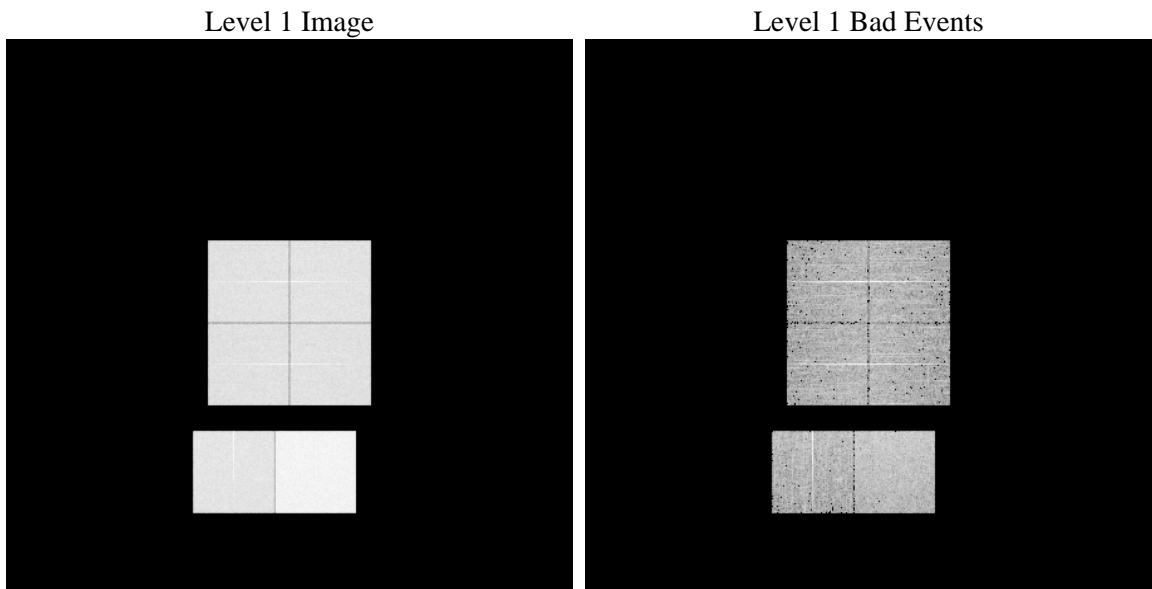
1 Front

seq_num	 	Sequence number
obs_id	60808	Observation id
title	ACIS-012367 diagnostics	Proposal title
observer	CHANDRA engineering request/realtime commanding	Principal investig
object	 	Source name
dtcycle	0	
cycle	P	events from which exps? Prim/Second/Both
ra_targ	0.0	Observer's specified target RA [deg]
dec_targ	0.0	Observer's specified target Dec [deg]
ra_nom	226.99756760633	Nominal RA [deg]
dec_nom	-39.97145792399	Nominal Dec [deg]
roll_nom	60.847487936827	Nominal Roll [deg]
revision	3	Processing version of data
ontime	8463.9999684691	Sum of GTIs [s]
livetime	8356.8237044595	Livetime [s]
ontime0	4751.3445660472	Sum of GTIs [s]
ontime1	4856.7419375181	Sum of GTIs [s]
ontime2	4471.02244699	Sum of GTIs [s]
ontime3	4543.8526338041	Sum of GTIs [s]
ontime6	4968.4911676347	Sum of GTIs [s]
ontime7	8463.9999684691	Sum of GTIs [s]
l2events	1285693	Number of level 2 events

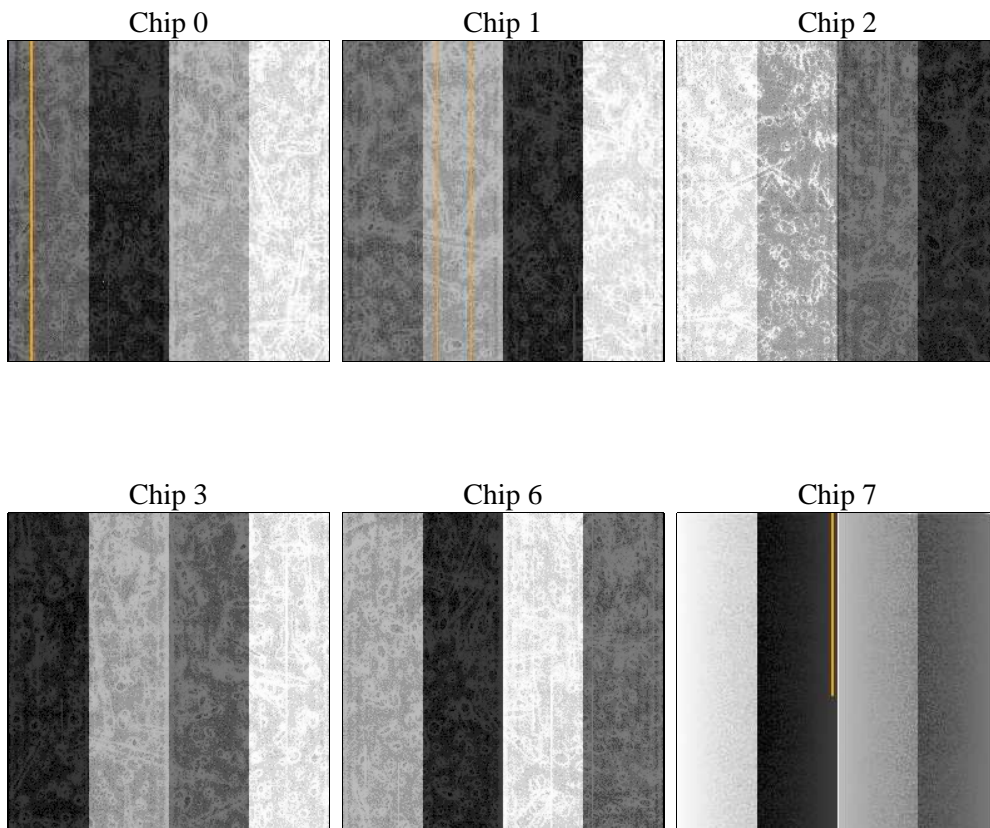
2 OBI

2.1 OBI

2.1.1 Images



2.1.2 Bias



2.1.3 Parameters

obi_num	0	Obi number	sched_exp_time	0.0	[s] Scheduled observation exposure time
ascdsver	8.4.5	Processing system revision	ontime	8463.9999684691	Sum of GTIs [s]
caldbver	4.5.2	 	ontime0	4751.3445660472	Sum of GTIs [s]
date	2012-10-24T20:55:04	Date and time of file creation	ontime1	4856.7419375181	Sum of GTIs [s]
revision	3	Processing version of data	ontime2	4471.02244699	Sum of GTIs [s]
			ontime3	4543.8526338041	Sum of GTIs [s]
			ontime6	4968.4911676347	Sum of GTIs [s]
			ontime7	8463.9999684691	Sum of GTIs [s]
			l1events	1544881	Number of level 1 events

2.1.4 Events

	ccd 0	ccd 1	ccd 2	ccd 3	ccd 6	ccd 7		ccd 0	ccd 1	ccd 2	ccd 3	ccd 6	ccd 7
level 1 events	223757	229594	215860	218912	247005	409753	grade 0 events	106708	109549	104025	106268	116762	90802
rejected events	29833	30823	30991	30551	33024	44913		47%	47%	48%	48%	47%	22%
rejected %	13%	13%	14%	13%	13%	10%	grade 1 events	594	510	602	588	525	259
								0%	0%	0%	0%	0%	0%
							grade 2 events	34001	35199	31196	31921	36917	80314
								15%	15%	14%	14%	14%	19%
							grade 3 events	12599	12615	12037	12322	13289	37056
								5%	5%	5%	5%	5%	9%
							grade 4 events	12527	12549	11990	12214	13089	36358
								5%	5%	5%	5%	5%	8%
							grade 5 events	2143	2162	1972	2156	2392	8720
								0%	0%	0%	0%	0%	2%
							grade 6 events	28089	28859	25621	25636	33924	120310
								12%	12%	11%	11%	13%	29%
							grade 7 events	27096	28151	28417	27807	30107	35934
								12%	12%	13%	12%	12%	8%

2.2 Compared Parameters

Parameter	Planned	Actual	Parameter	Planned	Actual
Instrument	ACIS	ACIS	Obspar format version number	7	7
Detector	ACIS-012367	ACIS-012367	Obspar file type	PREDICTED	ACTUAL
Grating	NONE	NONE	Obspar update status	NONE	UPDATED
Data mode	FAINT	FAINT	On-chip summing requested	N	N
Observation mode	SECONDARY	SECONDARY	Subarray requested	NONE	NONE
[deg] Pointing RA	0	226.9975676063294	Alternating exposures requested	N	N
[deg] Pointing Dec	0	-39.97145792398995	[s] Primary exposure time	0.000000	3.2
[deg] Pointing Roll	0.0	60.84748793682731			
[mm] SIM focus pos	-0.782348	-1.038866356238299			
[mm] SIM defocus	0	0.4944702831659975			
[mm] SIM translation stage pos	-233.592463	250.466033080201			
[mm] SIM translation stage offset	0	-0.01005468664627074			
[s] Observation start time (MET)	164291771.815826	164291770.79113			
Observation start date	2003-03-17T12:36:12	2003-03-17T12:36:10			
[s] Observation end time (MET)	164317265.6169	164317264.59221			
Observation end date	2003-03-17T19:41:06	2003-03-17T19:41:04			
Read mode	TIMED	TIMED			

2.3 Star Slots

2.4 FID Slots

A Summary

A.1 Status

V&V Scientist	Beth Sundheim
V&V Date (YYYY-MM-DD)	2012.12.03
V&V Edition	1
V&V Disposition and Status	OK
V&V Charge Time	8.4639999684691

A.2 Comments