

V&V Reference Report

L2 ASCDS Version : 7.6.11.10

Observation 60588 - L2 Version 3
Chandra X-Ray Center

L2 Processing Date : Feb 4 2009

Contents

1	Front	2
2	OBI	3
2.1	OBI	3
2.1.1	Images	3
2.1.2	Bias	3
2.1.3	Parameters	4
2.1.4	Events	4
2.2	Compared Parameters	5
2.3	Star Slots	6
2.4	FID Slots	6
A	Summary	7
A.1	Status	7
A.2	Comments	7

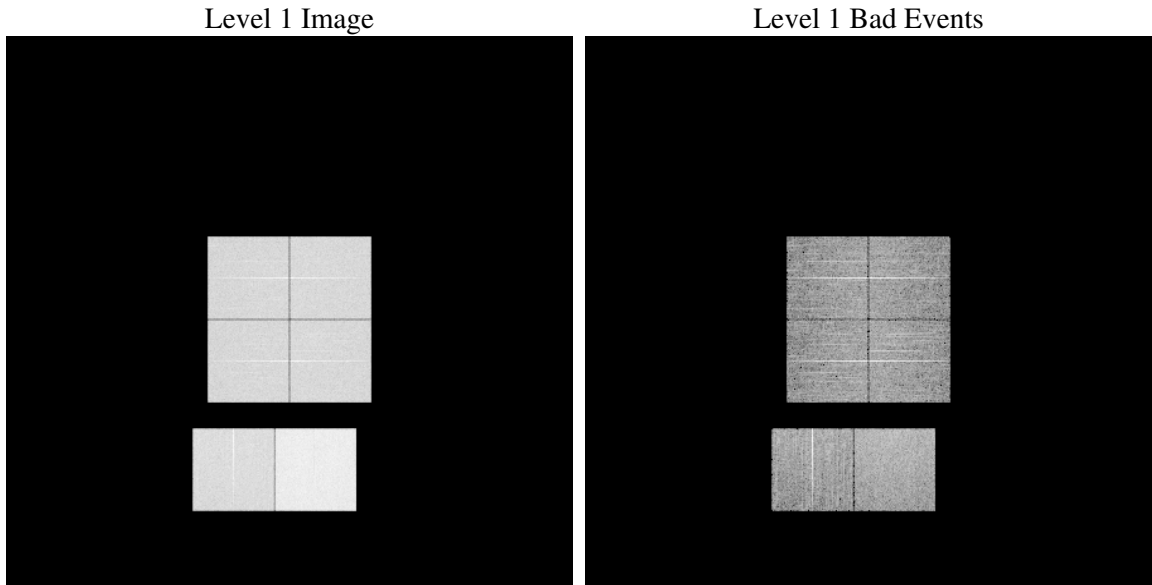
1 Front

seq_num	
obs_id	60588
title	ACIS-012367 diagnostics
observer	CHANDRA engineering request/realtime commanding
object	
dtcycle	0
cycle	P
ra_targ	0.0
dec_targ	0.0
ra_nom	312.58127539496
dec_nom	19.677458881268
roll_nom	198.97700758617
revision	3
ontime	12163.199954689
livetime	12009.182193063
ontime0	7279.0537236631
ontime1	7479.9954130352
ontime2	7146.9018475115
ontime3	7233.6803682148
ontime6	7781.4059968591
ontime7	12163.199954689
l2events	1806434

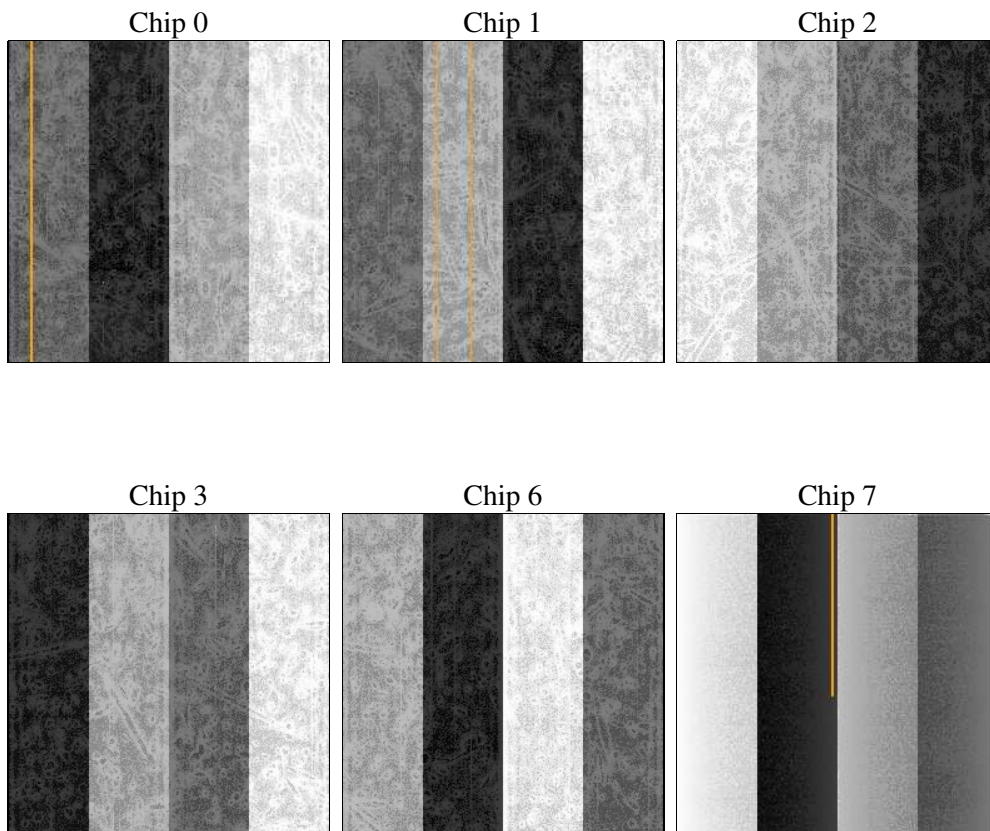
2 OBI

2.1 OBI

2.1.1 Images



2.1.2 Bias



2.1.3 Parameters

obi_num	0
ascdsver	7.6.11.10
caldbver	3.5.1
date	2009-02-04T17:00:50
revision	3

sched_exp_time	10800
ontime	12163.199954689
ontime0	7279.0537236631
ontime1	7479.9954130352
ontime2	7146.9018475115
ontime3	7233.6803682148
ontime6	7781.4059968591
ontime7	12163.199954689
l1events	2208801

2.1.4 Events

	ccd 0	ccd 1	ccd 2	ccd 3	ccd 6	ccd 7
level 1 events	320596	327613	320541	327306	361855	550890
rejected events	48327	47595	49018	52500	54821	66096
rejected %	15%	14%	15%	16%	15%	11%

	ccd 0	ccd 1	ccd 2	ccd 3	ccd 6	ccd 7
grade 0 events	150636	154446	152834	155117	167658	122173
	46%	47%	47%	47%	46%	22%
grade 1 events	862	756	903	882	773	353
	0%	0%	0%	0%	0%	0%
grade 2 events	47565	49623	46074	47333	53024	106798
	14%	15%	14%	14%	14%	19%
grade 3 events	17570	17893	17859	17919	19109	49233
	5%	5%	5%	5%	5%	8%
grade 4 events	17338	17494	17621	17726	19236	48592
	5%	5%	5%	5%	5%	8%
grade 5 events	3279	3280	3046	3405	3763	12038
	1%	1%	0%	1%	1%	2%
grade 6 events	40110	41592	38157	37845	49084	159638
	12%	12%	11%	11%	13%	28%
grade 7 events	43236	42529	44047	47079	49208	52065
	13%	12%	13%	14%	13%	9%

2.2 Compared Parameters

Parameter	Planned	Actual	Parameter	Planned	Actual
Instrument	ACIS	ACIS	Obspar format version number	6	6
Detector	ACIS-012367	ACIS-012367	Obspar file type	PREDICTED	ACTUAL
Grating	NONE	NONE	Obspar update status	OVERRIDE	OVERRIDE
Data mode	FAINT	FAINT	Number of optional ACIS chips dropped	0	0
Observation mode	SECONDARY	SECONDARY	On-chip summing requested	N	N
Pointing RA	312.5812753949597	312.5812753949597	Subarray requested	NONE	NONE
Pointing Dec	19.67745888126764	19.67745888126764	Alternating exposures requested	N	N
Pointing Roll	198.977007586168	198.977007586168	Primary exposure time	3.2	3.2
SIM focus pos (mm)	-0.68282252473119	-0.68282252473119			
SIM defocus (mm)	0.8505140384245534	0.8505140384245534			
SIM translation stage pos (mm)	250.4660330802	250.4660330802			
SIM translation stage offset (mm)	-0.01005726120527584	-0.01005726120527584			
Observation start time	177273083.716531	177273083.716531			
Observation start date	2003-08-14T19:01:00	2003-08-14T18:31:23			
Observation end time	177286819.192918	177286819.192918			
Observation end date	2003-08-14T22:01:00	2003-08-14T22:20:19			
Read mode	TIMED	TIMED			

2.3 Star Slots

2.4 FID Slots

A Summary

A.1 Status

V&V Scientist	Beth Sundheim
V&V Date (YYYY-MM-DD)	2009.02.05
V&V Edition	1
V&V Disposition and Status	OK
V&V Charge Time	12.1631999

A.2 Comments

This obsid was reprocessed to correct minor errors in parameters used in processing. Some of these parameters cannot be determined automatically for this observation and were derived from spacecraft telemetry.