

V&V Reference Report

L2 ASCDS Version : 8.4.5

Observation 60368 - L2 Version 3
Chandra X-Ray Center

L2 Processing Date : Nov 12 2012

Contents

1	Front	2
2	OBI	3
2.1	OBI	3
2.1.1	Images	3
2.1.2	Bias	3
2.1.3	Parameters	4
2.1.4	Events	4
2.2	Compared Parameters	5
2.3	Star Slots	6
2.4	FID Slots	6
A	Summary	7
A.1	Status	7
A.2	Comments	7

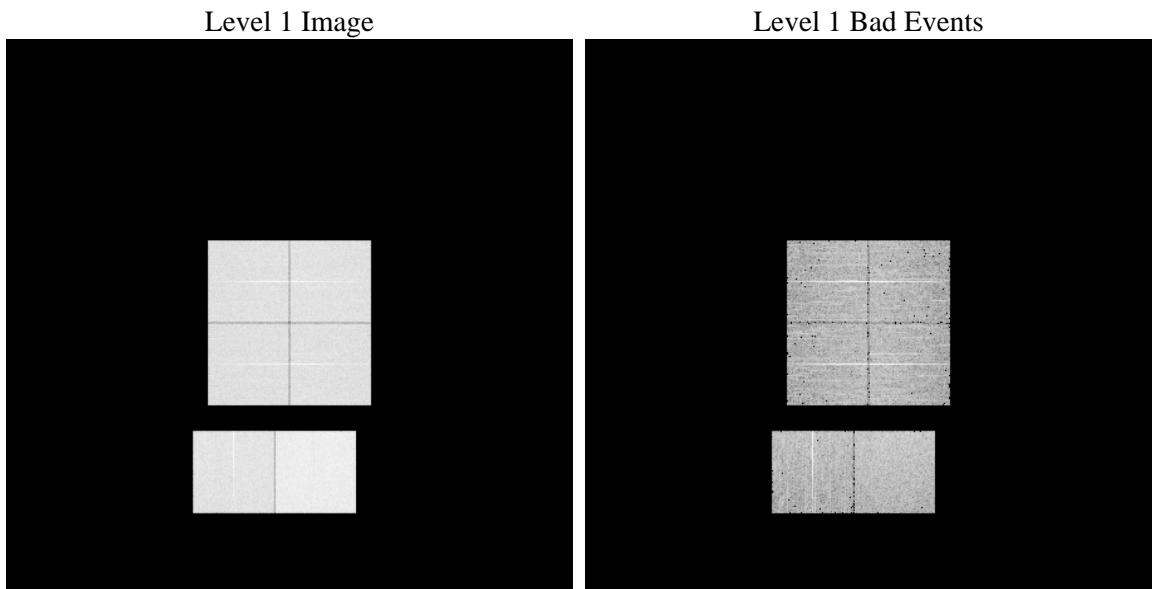
1 Front

seq_num	 	Sequence number
obs_id	60368	Observation id
title	ACIS-012367 diagnostics	Proposal title
observer	CHANDRA engineering request/realtime commanding	Principal investig
object	 	Source name
dtcycle	0	
cycle	P	events from which exps? Prim/Second/Both
ra_targ	0.0	Observer's specified target RA [deg]
dec_targ	0.0	Observer's specified target Dec [deg]
ra_nom	133.02981117229	Nominal RA [deg]
dec_nom	-16.400464868398	Nominal Dec [deg]
roll_nom	326.20245664286	Nominal Roll [deg]
revision	3	Processing version of data
ontime	7801.5999709368	Sum of GTIs [s]
livetime	7702.8114145452	Livetime [s]
ontime0	5237.9821161628	Sum of GTIs [s]
ontime1	5461.6109405458	Sum of GTIs [s]
ontime2	5046.7637125254	Sum of GTIs [s]
ontime3	5088.8965047598	Sum of GTIs [s]
ontime6	5538.4240778089	Sum of GTIs [s]
ontime7	7801.5999709368	Sum of GTIs [s]
l2events	1134537	Number of level 2 events

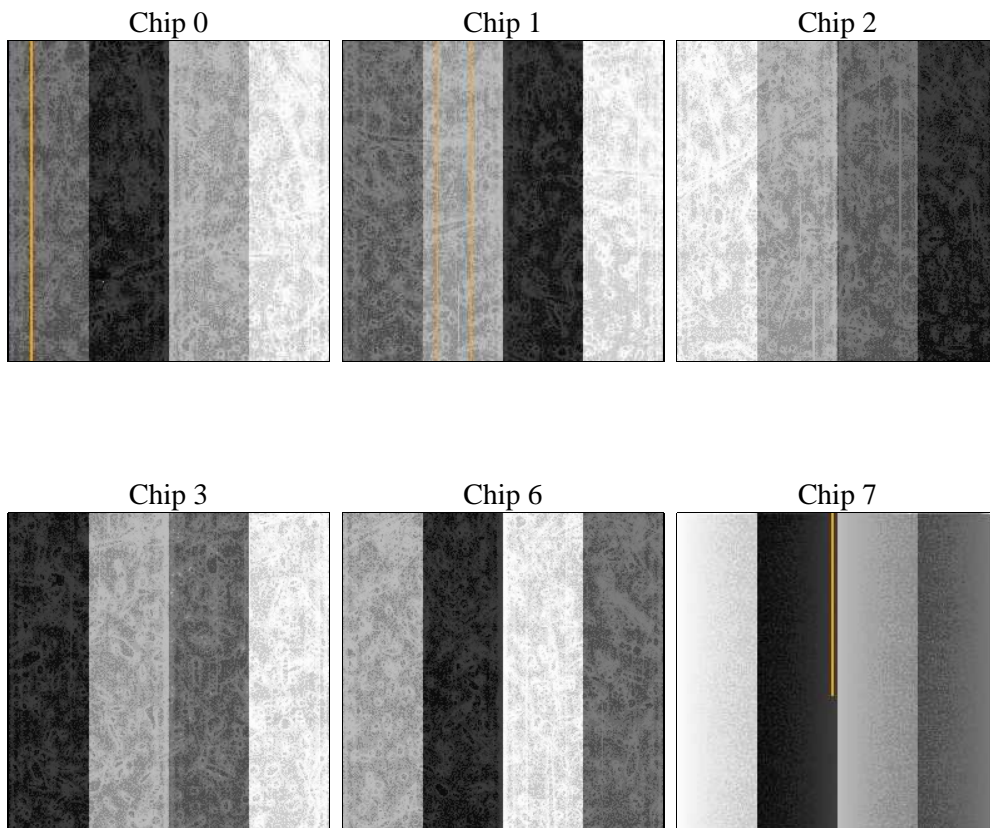
2 OBI

2.1 OBI

2.1.1 Images



2.1.2 Bias



2.1.3 Parameters

obi_num	1	Obi number	sched_exp_time	0.0	[s] Scheduled observation exposure time
ascdsver	8.4.5	Processing system revision	ontime	7801.5999709368	Sum of GTIs [s]
caldbver	4.5.2	 	ontime0	5237.9821161628	Sum of GTIs [s]
date	2012-11-12T04:16:48	Date and time of file creation	ontime1	5461.6109405458	Sum of GTIs [s]
revision	3	Processing version of data	ontime2	5046.7637125254	Sum of GTIs [s]
			ontime3	5088.8965047598	Sum of GTIs [s]
			ontime6	5538.4240778089	Sum of GTIs [s]
			ontime7	7801.5999709368	Sum of GTIs [s]
			l1events	1418706	Number of level 1 events

2.1.4 Events

	ccd 0	ccd 1	ccd 2	ccd 3	ccd 6	ccd 7		ccd 0	ccd 1	ccd 2	ccd 3	ccd 6	ccd 7
level 1 events	213966	221500	207935	212517	235187	327601	grade 0 events	98469	101757	96754	98427	106258	69480
rejected events	36370	35660	35960	37993	39070	44629		46%	45%	46%	46%	45%	21%
rejected %	16%	16%	17%	17%	16%	13%	grade 1 events	557	432	613	566	527	205
								0%	0%	0%	0%	0%	0%
							grade 2 events	30736	33310	28576	29583	33741	62513
								14%	15%	13%	13%	14%	19%
							grade 3 events	11284	11732	11172	11285	12076	28183
								5%	5%	5%	5%	5%	8%
							grade 4 events	11323	11743	11128	11086	12155	27665
								5%	5%	5%	5%	5%	8%
							grade 5 events	2402	2452	2071	2481	2622	8163
								1%	1%	0%	1%	1%	2%
							grade 6 events	25903	27427	24466	24258	31887	95254
								12%	12%	11%	11%	13%	29%
							grade 7 events	33292	32647	33155	34831	35921	36138
								15%	14%	15%	16%	15%	11%

2.2 Compared Parameters

Parameter	Planned	Actual	Parameter	Planned	Actual
Instrument	ACIS	ACIS	Obspar format version number	7	7
Detector	ACIS-012367	ACIS-012367	Obspar file type	PREDICTED	ACTUAL
Grating	NONE	NONE	Obspar update status	NONE	UPDATED
Data mode	FAINT	FAINT	On-chip summing requested	N	N
Observation mode	SECONDARY	SECONDARY	Subarray requested	NONE	NONE
[deg] Pointing RA	0	133.0298111722876	Alternating exposures requested	N	N
[deg] Pointing Dec	0	-16.40046486839761	[s] Primary exposure time	0.000000	3.2
[deg] Pointing Roll	0.0	326.2024566428587			
[mm] SIM focus pos	-0.782348	-0.7809083437167272			
[mm] SIM defocus	0	0.7524282956875696			
[mm] SIM translation stage pos	-233.592463	250.4635187648994			
[mm] SIM translation stage offset	0	-0.007540371344731511			
[s] Observation start time (MET)	193496929.968231	193496928.94351			
Observation start date	2004-02-18T13:08:50	2004-02-18T13:08:48			
[s] Observation end time (MET)	193535431.019917	193535429.99519			
Observation end date	2004-02-18T23:50:31	2004-02-18T23:50:29			
Read mode	TIMED	TIMED			

2.3 Star Slots

2.4 FID Slots

A Summary

A.1 Status

V&V Scientist	Beth Sundheim
V&V Date (YYYY-MM-DD)	2012.12.11
V&V Edition	1
V&V Disposition and Status	OK
V&V Charge Time	7.8015999709368

A.2 Comments