

V&V Reference Report

L2 ASCDS Version : 7.6.7.2

Observation 60368 - L2 Version 001
Chandra X-Ray Center

L2 Processing Date : Jun 2 2006

Contents

1	Front	2
2	OBI	3
2.1	OBI	3
2.1.1	Images	3
2.1.2	Bias	3
2.1.3	Parameters	4
2.1.4	Events	4
2.2	Compared Parameters	5
2.3	Aspect	6
2.4	Star Slots	8
2.5	FID Slots	8
A	Summary	9
A.1	Status	9
A.2	Comments	9

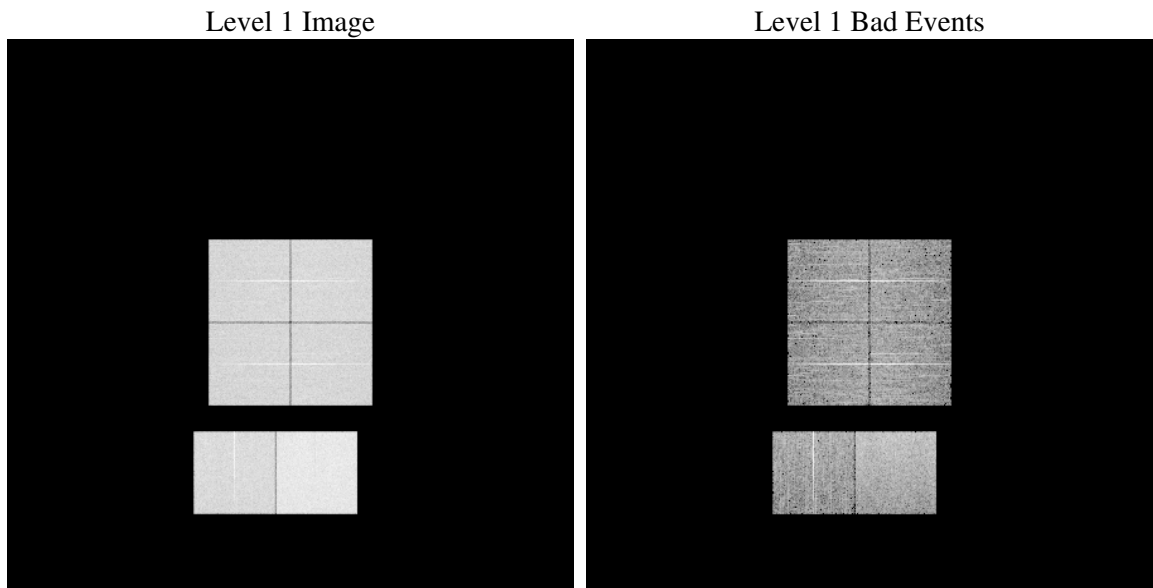
1 Front

seq_num	
obs_id	60368
title	ACIS-012367 diagnostics
observer	CHANDRA engineering request/realtime commanding
object	
dtcycle	0
cycle	P
ra_targ	0.0
dec_targ	0.0
ra_nom	133.02978713259
dec_nom	-16.400449390777
roll_nom	326.20244984748
revision	2
ontime	7801.5999709368
livetime	7702.8114145452
ontime0	5237.9821161628
ontime1	5461.6109405458
ontime2	5046.7637125254
ontime3	5088.8965047598
ontime6	5536.8240778148
ontime7	7801.5999709368
l2events	1123046

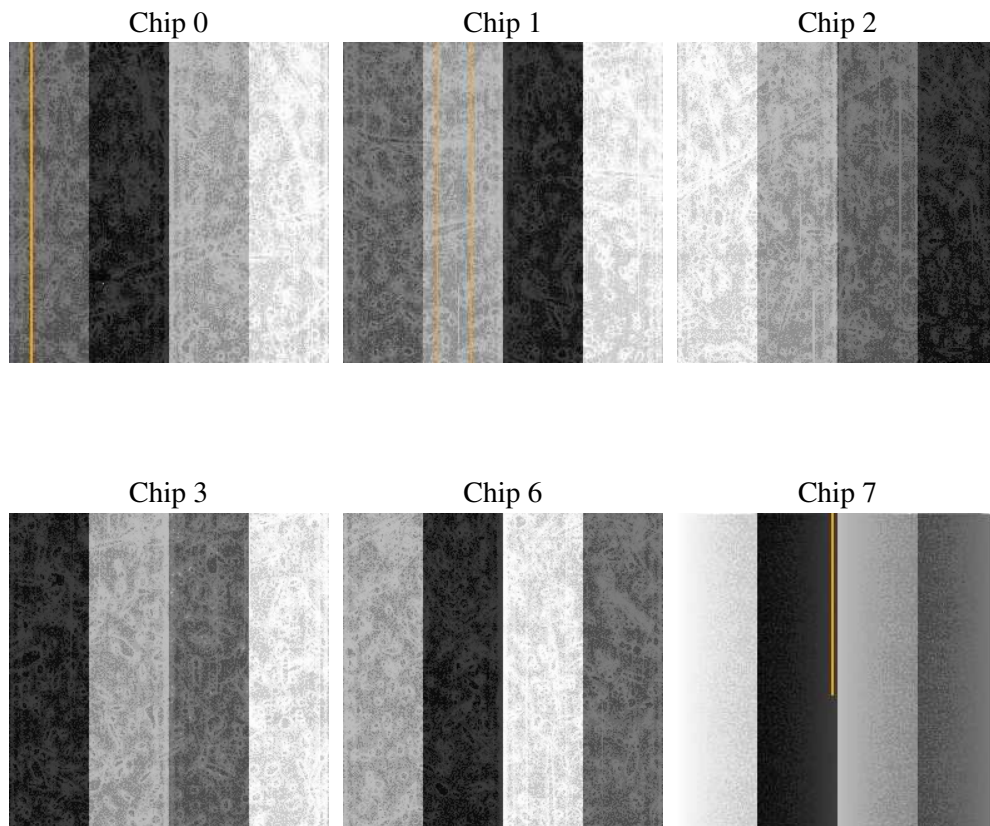
2 OBI

2.1 OBI

2.1.1 Images



2.1.2 Bias



2.1.3 Parameters

obi_num	1
ascdsver	7.6.7.2
caldbver	3.2.2
date	2006-06-02T22:10:52
revision	2

sched_exp_time	0.0
ontime	7804.3510413468
ontime0	5240.7331865728
ontime1	5464.3620109558
ontime2	5049.5147829354
ontime3	5091.6475751698
ontime6	5538.9047961831
ontime7	7804.3510413468
l1events	1418706

2.1.4 Events

	ccd 0	ccd 1	ccd 2	ccd 3	ccd 6	ccd 7
level 1 events	213966	221500	207935	212517	235187	327601
rejected events	36389	35658	35965	38017	39238	56049
rejected %	17%	16%	17%	17%	16%	17%

	ccd 0	ccd 1	ccd 2	ccd 3	ccd 6	ccd 7
grade 0 events	98371	101602	96653	98340	106019	47026
	45%	45%	46%	46%	45%	14%
grade 1 events	551	426	600	560	520	113
	0%	0%	0%	0%	0%	0%
grade 2 events	30833	33467	28677	29668	33980	83220
	14%	15%	13%	13%	14%	25%
grade 3 events	11255	11680	11134	11262	12028	19297
	5%	5%	5%	5%	5%	5%
grade 4 events	11287	11722	11100	11058	12104	18890
	5%	5%	5%	5%	5%	5%
grade 5 events	2400	2453	2063	2463	2614	6861
	1%	1%	0%	1%	1%	2%
grade 6 events	25949	27483	24518	24295	31953	103209
	12%	12%	11%	11%	13%	31%
grade 7 events	33320	32667	33190	34871	35969	48985
	15%	14%	15%	16%	15%	14%

2.2 Compared Parameters

Parameter	Planned	Actual	Parameter	Planned	Actual
Instrument	ACIS	ACIS	Obspar format version number	6	6
Detector	ACIS-012367	ACIS-012367	Obspar file type	PREDICTED	ACTUAL
Grating	NONE	NONE	Obspar update status	NONE	UPDATED
Data mode	FAINT	FAINT	On-chip summing requested	N	N
Observation mode	SECONDARY	SECONDARY	Subarray requested	NONE	NONE
Pointing RA	0	133.0297871325928	Alternating exposures requested	N	N
Pointing Dec	0	-16.40044939077666	Primary exposure time	0.000000	3.2
Pointing Roll	0.0	326.2024498474763			
SIM focus pos (mm)	-0.782348	-0.7809083437167272			
SIM defocus (mm)	0	0.7524282956875696			
SIM translation stage pos (mm)	-233.592463	250.4635187648994			
SIM translation stage offset (mm)	0	-0.007540371344731511			
Observation start time	193496929.968231	193496928.94351			
Observation start date	2004-02-18T13:08:50	2004-02-18T13:08:48			
Observation end time	193535431.019917	193535429.99519			
Observation end date	2004-02-18T23:50:31	2004-02-18T23:50:29			
Read mode	TIMED	TIMED			

2.3 Aspect

2.4 Star Slots

2.5 FID Slots

A Summary

A.1 Status

V&V Scientist	Jen Lauer
V&V Date (YYYY-MM-DD)	2006.06.04
V&V Edition	1
V&V Disposition and Status	OK
V&V Charge Time	7.80159997

A.2 Comments

The ACIS focal plane temperature was above calibration limits for the entire observation.