

V&V Reference Report

L2 ASCDS Version : 7.6.7.1

Observation 59938 - L2 Version 002
Chandra X-Ray Center

L2 Processing Date : Apr 8 2006

Contents

1	Front	2
2	OBI	3
2.1	OBI	3
2.1.1	Images	3
2.1.2	Bias	3
2.1.3	Parameters	4
2.1.4	Events	4
2.2	Compared Parameters	5
2.3	Aspect	6
2.4	Star Slots	8
2.5	FID Slots	8
A	Summary	9
A.1	Status	9
A.2	Comments	9

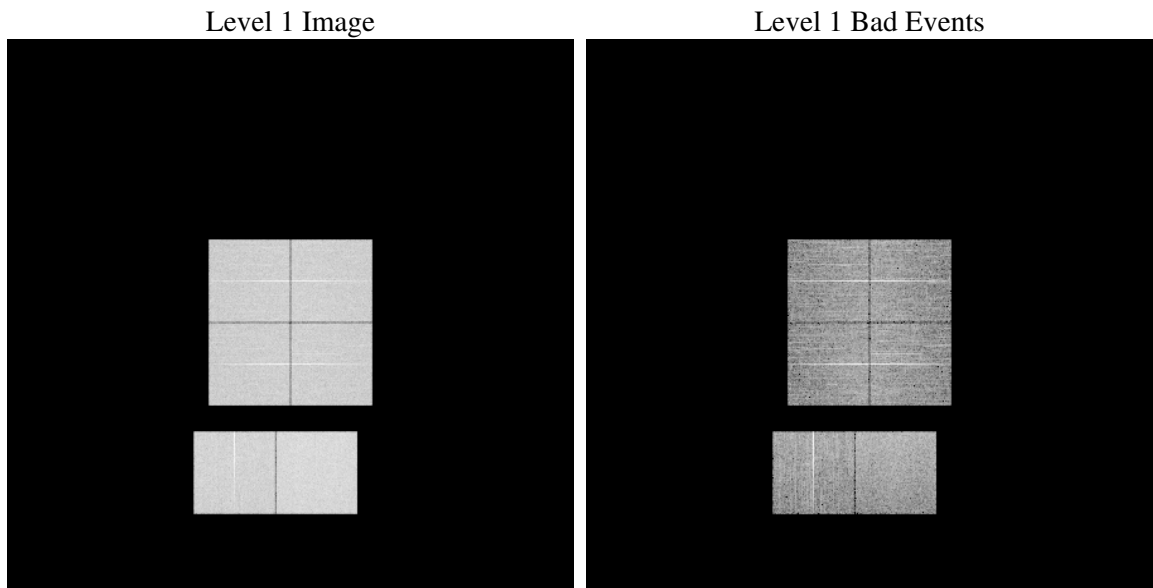
1 Front

seq_num	
obs_id	59938
title	ACIS-012367 diagnostics
observer	CHANDRA engineering request/realtime commanding
object	
dtcycle	0
cycle	P
ra_targ	0.0
dec_targ	0.0
ra_nom	50.023503956549
dec_nom	-1.99831939939
roll_nom	319.75492162372
revision	2
ontime	7798.1754470766
livetime	7699.4302540682
ontime0	6524.5109635293
ontime1	6693.0834469795
ontime2	6359.3031778634
ontime3	6401.271512419
ontime6	6910.3108075559
ontime7	7798.1754470766
l2events	1054279

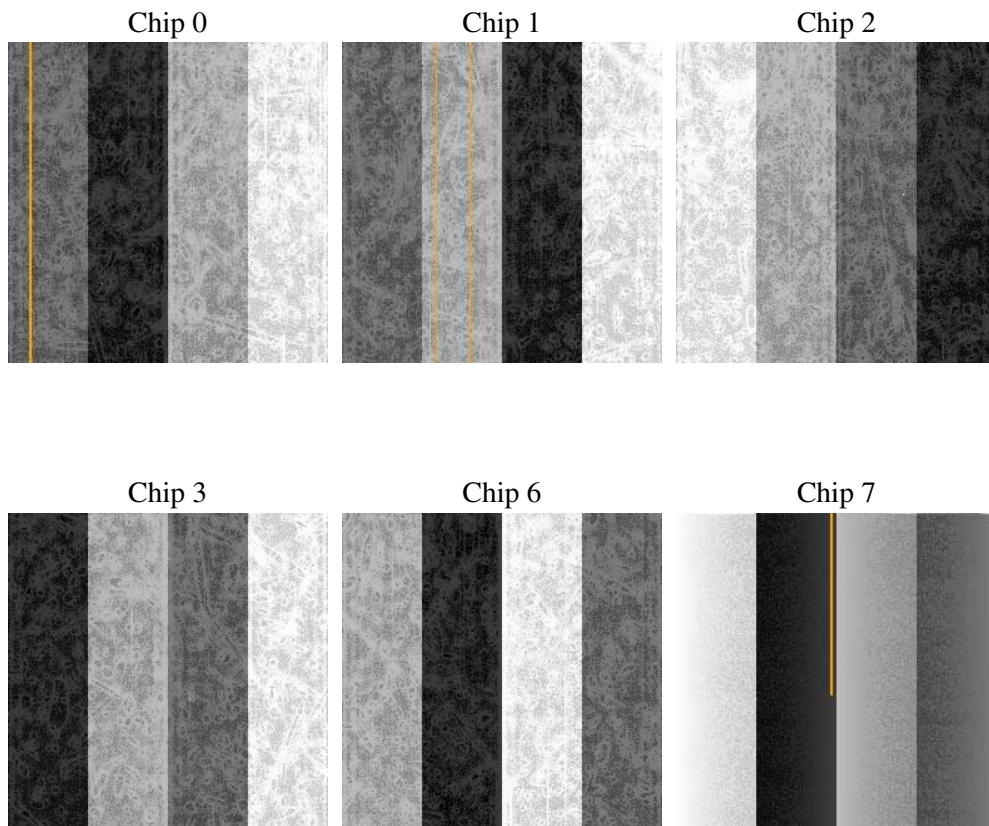
2 OBI

2.1 OBI

2.1.1 Images



2.1.2 Bias



2.1.3 Parameters

obi_num	0
ascdsver	7.6.7.1
caldsver	3.2.1
date	2006-04-08T23:40:20
revision	2

sched_exp_time	0.0
ontime	7801.1093707085
ontime0	6527.403847158
ontime1	6695.9352906048
ontime2	6362.1139814854
ontime3	6404.2464760542
ontime6	6913.0805712044
ontime7	7801.1093707085
l1events	1410479

2.1.4 Events

	ccd 0	ccd 1	ccd 2	ccd 3	ccd 6	ccd 7
level 1 events	220035	226549	217776	220730	245546	279843
rejected events	46797	47871	47300	49196	53475	58476
rejected %	21%	21%	21%	22%	21%	20%

	ccd 0	ccd 1	ccd 2	ccd 3	ccd 6	ccd 7
grade 0 events	95695	97692	96328	96936	103943	37044
	43%	43%	44%	43%	42%	13%
grade 1 events	540	442	576	607	530	92
	0%	0%	0%	0%	0%	0%
grade 2 events	30266	32343	28247	28926	33717	67723
	13%	14%	12%	13%	13%	24%
grade 3 events	11243	11219	11147	10975	11956	15382
	5%	4%	5%	4%	4%	5%
grade 4 events	11088	11343	11061	11100	11847	15180
	5%	5%	5%	5%	4%	5%
grade 5 events	2894	3129	2717	2895	3363	6654
	1%	1%	1%	1%	1%	2%
grade 6 events	25063	26156	23785	23691	30689	86143
	11%	11%	10%	10%	12%	30%
grade 7 events	43246	44225	43915	45600	49501	51625
	19%	19%	20%	20%	20%	18%

2.2 Compared Parameters

Parameter	Planned	Actual	Parameter	Planned	Actual
Instrument	ACIS	ACIS	Obspar format version number	6	6
Detector	ACIS-012367	ACIS-012367	Obspar file type	PREDICTED	ACTUAL
Grating	NONE	NONE	Obspar update status	NONE	UPDATED
Data mode	FAINT	FAINT	On-chip summing requested	N	N
Observation mode	SECONDARY	SECONDARY	Subarray requested	NONE	NONE
Pointing RA	0	50.02350395654885	Alternating exposures requested	N	N
Pointing Dec	0	-1.998319399390038	Primary exposure time	3.2	3.2
Pointing Roll	0.0	319.7549216237202			
SIM focus pos (mm)	-0.782348	-0.7809083437167272			
SIM defocus (mm)	0	0.7524282956875696			
SIM translation stage pos (mm)	-233.592463	250.4635187648994			
SIM translation stage offset (mm)	0	-0.007540371344731511			
Observation start time	218630841.283739	218630840.25872			
Observation start date	2004-12-05T10:47:21	2004-12-05T10:47:20			
Observation end time	218640966.234195	218640965.20918			
Observation end date	2004-12-05T13:36:06	2004-12-05T13:36:05			
Read mode	TIMED	TIMED			

2.3 Aspect

2.4 Star Slots

2.5 FID Slots

A Summary

A.1 Status

V&V Scientist	Jen Lauer
V&V Date (YYYY-MM-DD)	2006.04.10
V&V Edition	1
V&V Disposition and Status	OK
V&V Charge Time	7.79817544

A.2 Comments

The ACIS focal plane temp is above the calibration limits for the entire observation.