

V&V Reference Report

L2 ASCDS Version : 7.6.7

Observation 59858 - L2 Version 002
Chandra X-Ray Center

L2 Processing Date: Feb 16 2006

Contents

1	Front	2
2	OBI	3
2.1	OBI	3
2.1.1	Images	3
2.1.2	Bias	3
2.1.3	Parameters	4
2.1.4	Events	4
2.2	Compared Parameters	5
2.3	Aspect	6
2.4	Star Slots	8
2.5	FID Slots	8
A	Summary	9
A.1	Status	9
A.2	Comments	9

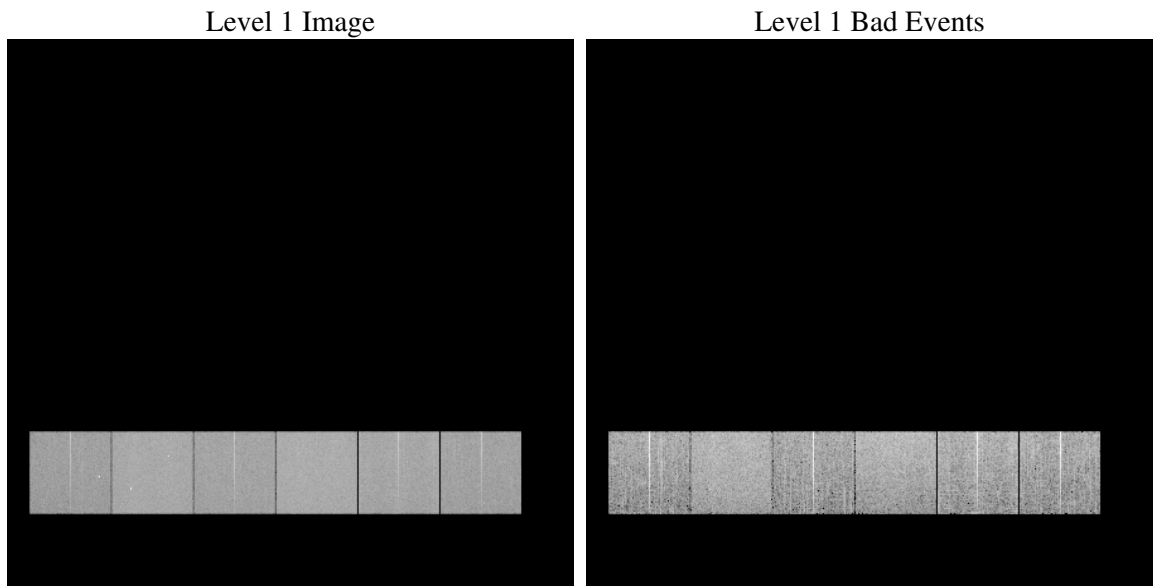
1 Front

seq_num	
obs_id	59858
title	ACIS-456789 diagnostics
observer	CHANDRA engineering request/realtime commanding
object	
dtcycle	0
cycle	P
ra_targ	0.0
dec_targ	0.0
ra_nom	110.62728132392
dec_nom	9.7096450362372
roll_nom	346.83231777706
revision	2
ontime	8280.0744092464
livetime	8175.2271214143
ontime4	6299.9639335275
ontime5	8280.1154492497
ontime6	6876.8156155348
ontime7	8280.0744092464
ontime8	7090.8020236194
ontime9	6688.7164373696
l2events	1098097

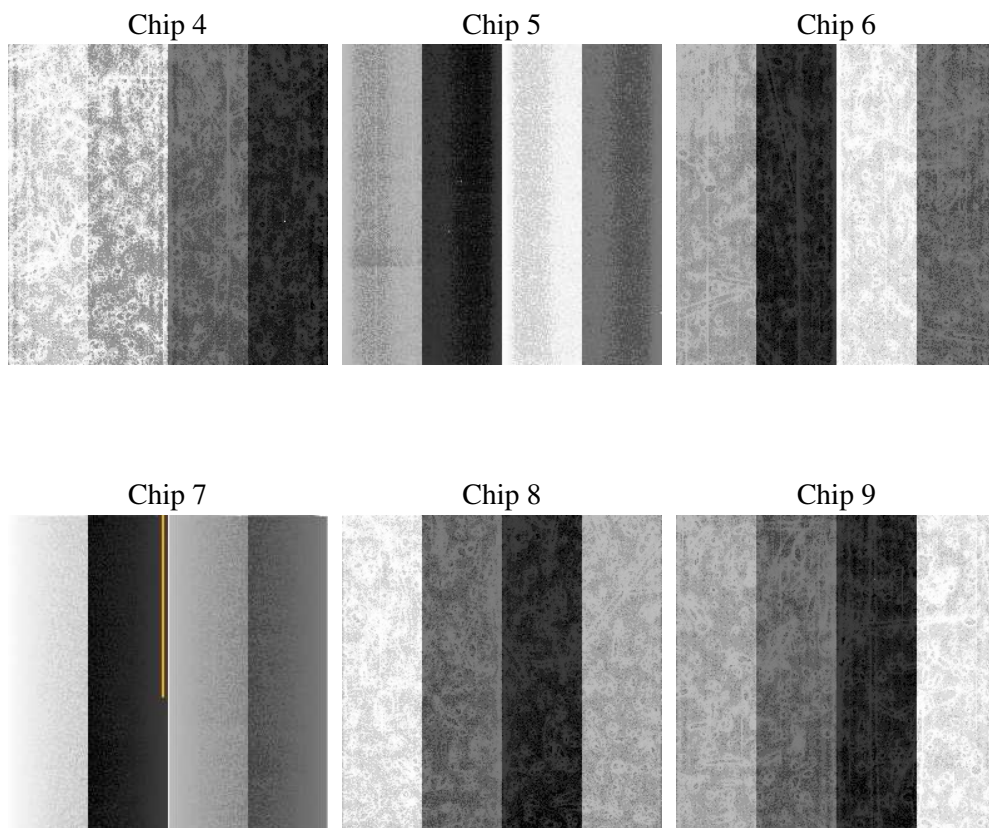
2 OBI

2.1 OBI

2.1.1 Images



2.1.2 Bias



2.1.3 Parameters

obi_num	0
ascdsver	7.6.7
caldsver	3.2.1
date	2006-02-16T19:04:53
revision	2

sched_exp_time	0.0
ontime	8280.7652532756
ontime4	6300.5316575468
ontime5	8280.7652532756
ontime6	6877.4243795574
ontime7	8280.7652532756
ontime8	7091.3287076652
ontime9	6689.4483214021
l1events	1494261

2.1.4 Events

	ccd 4	ccd 5	ccd 6	ccd 7	ccd 8	ccd 9
level 1 events	210203	271028	238323	289926	257999	226782
rejected events	49480	62494	49857	59745	57093	50391
rejected %	23%	23%	20%	20%	22%	22%

	ccd 4	ccd 5	ccd 6	ccd 7	ccd 8	ccd 9
grade 0 events	93197	21627	102288	38757	108431	96450
	44%	7%	42%	13%	42%	42%
grade 1 events	804	96	525	109	583	612
	0%	0%	0%	0%	0%	0%
grade 2 events	25432	97953	32877	69764	35464	30206
	12%	36%	13%	24%	13%	13%
grade 3 events	10810	6762	11604	16436	13328	11585
	5%	2%	4%	5%	5%	5%
grade 4 events	10704	6177	11730	15718	13354	11385
	5%	2%	4%	5%	5%	5%
grade 5 events	2818	6154	3144	6994	4099	3396
	1%	2%	1%	2%	1%	1%
grade 6 events	20580	76015	29967	89506	30329	26765
	9%	28%	12%	30%	11%	11%
grade 7 events	45858	56244	46188	52642	52411	46383
	21%	20%	19%	18%	20%	20%

2.2 Compared Parameters

Parameter	Planned	Actual	Parameter	Planned	Actual
Instrument	ACIS	ACIS	Obspar format version number	6	6
Detector	ACIS-456789	ACIS-456789	Obspar file type	PREDICTED	ACTUAL
Grating	NONE	NONE	Obspar update status	NONE	UPDATED
Data mode	FAINT	FAINT	On-chip summing requested	N	N
Observation mode	SECONDARY	SECONDARY	Subarray requested	NONE	NONE
Pointing RA	0	110.6272813239172	Alternating exposures requested	N	N
Pointing Dec	0	9.70964503623723	Primary exposure time	3.2	3.2
Pointing Roll	0.0	346.8323177770638			
SIM focus pos (mm)	-0.684267	-0.7809083437167272			
SIM defocus (mm)	0	0.7524282956875696			
SIM translation stage pos (mm)	-190.132523	250.466033080201			
SIM translation stage offset (mm)	0	-0.01005468664627074			
Observation start time	221878066.029963	221878065.00497			
Observation start date	2005-01-12T00:47:46	2005-01-12T00:47:45			
Observation end time	221890333.230516	221890332.20552			
Observation end date	2005-01-12T04:12:13	2005-01-12T04:12:12			
Read mode	TIMED	TIMED			

2.3 Aspect

2.4 Star Slots

2.5 FID Slots

A Summary

A.1 Status

V&V Scientist	Beth Sundheim
V&V Date (YYYY-MM-DD)	2006.02.16
V&V Edition	1
V&V Disposition and Status	OK
V&V Charge Time	8.2800744

A.2 Comments