

V&V Reference Report

L2 ASCDS Version : 7.6.7.1

Observation 59718 - L2 Version 002
Chandra X-Ray Center

L2 Processing Date : Mar 18 2006

Contents

1	Front	2
2	OBI	3
2.1	OBI	3
2.1.1	Images	3
2.1.2	Bias	3
2.1.3	Parameters	4
2.1.4	Events	4
2.2	Compared Parameters	5
2.3	Aspect	6
2.4	Star Slots	8
2.5	FID Slots	8
A	Summary	9
A.1	Status	9
A.2	Comments	9

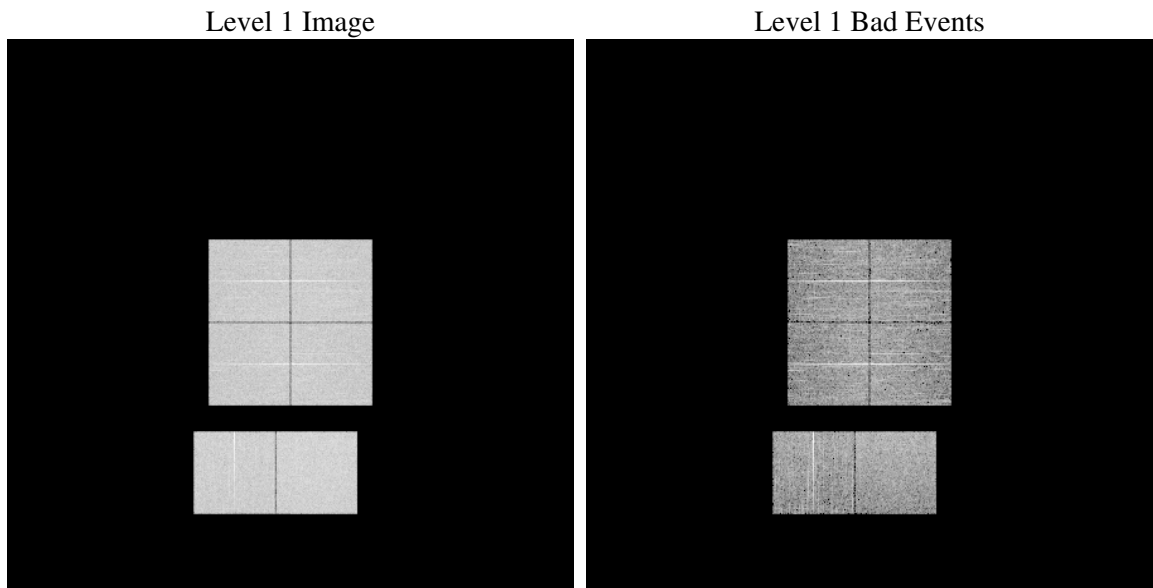
1 Front

seq_num	
obs_id	59718
title	ACIS-012367 diagnostics
observer	CHANDRA engineering request/realtime commanding
object	
dtcycle	0
cycle	P
ra_targ	0.0
dec_targ	0.0
ra_nom	211.47759977964
dec_nom	4.5177594494748
roll_nom	108.78369233927
revision	2
ontime	5420.7999798059
livetime	5352.1585464478
ontime0	5051.3287659287
ontime1	5109.6661317348
ontime2	4837.4241767228
ontime3	4915.2073145807
ontime6	5184.2083993256
ontime7	5420.7999798059
l2events	734295

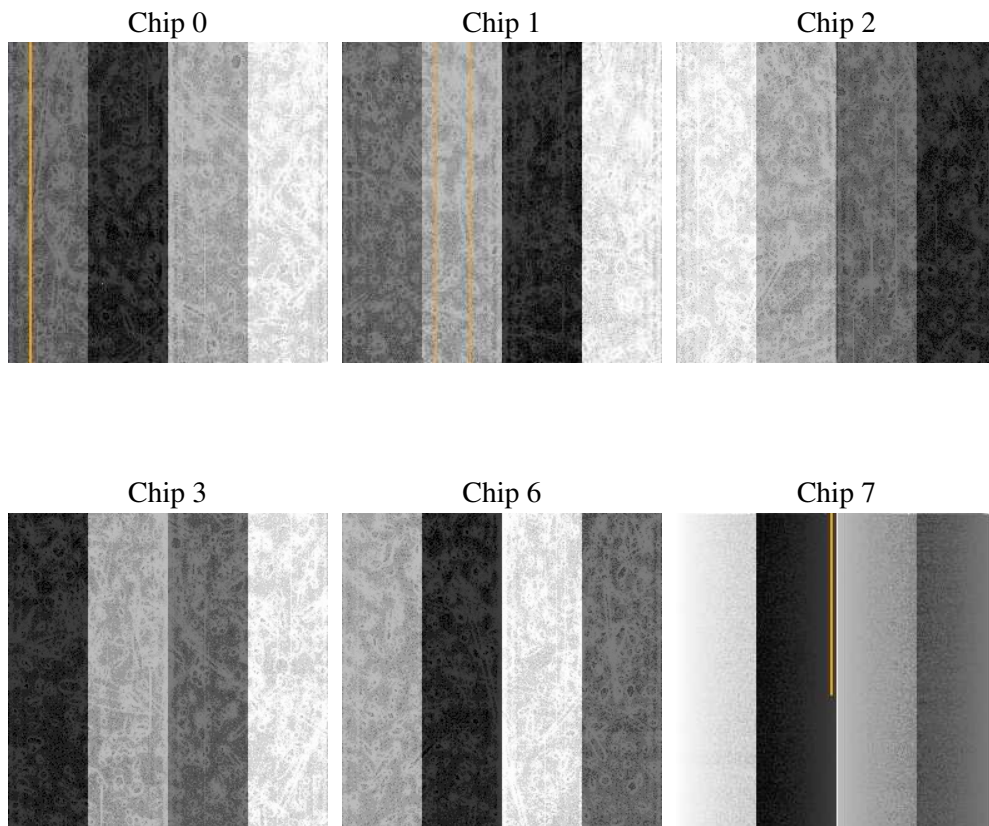
2 OBI

2.1 OBI

2.1.1 Images



2.1.2 Bias



2.1.3 Parameters

obi_num	0
ascdsver	7.6.7.1
caldsver	3.2.1
date	2006-03-18T07:12:24
revision	2

sched_exp_time	0.0
ontime	5522.6766704619
ontime0	5143.4825356603
ontime1	5201.8198616505
ontime2	4932.8189067841
ontime3	5007.3610843122
ontime6	5279.6031493247
ontime7	5522.6766704619
l1events	1002266

2.1.4 Events

	ccd 0	ccd 1	ccd 2	ccd 3	ccd 6	ccd 7
level 1 events	160882	163835	157691	160123	173606	186129
rejected events	36266	37436	36592	37506	39715	42564
rejected %	22%	22%	23%	23%	22%	22%

	ccd 0	ccd 1	ccd 2	ccd 3	ccd 6	ccd 7
grade 0 events	69768	70195	68899	69671	73759	24493
	43%	42%	43%	43%	42%	13%
grade 1 events	374	369	442	423	371	77
	0%	0%	0%	0%	0%	0%
grade 2 events	22173	22915	20897	21365	23461	44039
	13%	13%	13%	13%	13%	23%
grade 3 events	8258	8285	8206	8248	8666	10050
	5%	5%	5%	5%	4%	5%
grade 4 events	8168	8300	8051	8251	8486	10160
	5%	5%	5%	5%	4%	5%
grade 5 events	2211	2335	2051	2271	2403	4587
	1%	1%	1%	1%	1%	2%
grade 6 events	18535	18998	17403	17378	21903	57426
	11%	11%	11%	10%	12%	30%
grade 7 events	31395	32438	31742	32516	34557	35297
	19%	19%	20%	20%	19%	18%

2.2 Compared Parameters

Parameter	Planned	Actual	Parameter	Planned	Actual
Instrument	ACIS	ACIS	Obspar format version number	6	6
Detector	ACIS-012367	ACIS-012367	Obspar file type	PREDICTED	ACTUAL
Grating	NONE	NONE	Obspar update status	NONE	UPDATED
Data mode	FAINT	FAINT	On-chip summing requested	N	N
Observation mode	SECONDARY	SECONDARY	Subarray requested	NONE	NONE
Pointing RA	0	211.47759977964	Alternating exposures requested	N	N
Pointing Dec	0	4.517759449474846	Primary exposure time	3.2	3.2
Pointing Roll	0.0	108.7836923392699			
SIM focus pos (mm)	-0.782348	-0.6828225247311905			
SIM defocus (mm)	0	0.8505141146731063			
SIM translation stage pos (mm)	-233.592463	250.466033080201			
SIM translation stage offset (mm)	0	-0.01005468664627074			
Observation start time	228494328.579428	228494327.5544			
Observation start date	2005-03-29T14:38:49	2005-03-29T14:38:47			
Observation end time	228514186.93033	228514185.9053			
Observation end date	2005-03-29T20:09:47	2005-03-29T20:09:45			
Read mode	TIMED	TIMED			

2.3 Aspect

2.4 Star Slots

2.5 FID Slots

A Summary

A.1 Status

V&V Scientist	Jen Lauer
V&V Date (YYYY-MM-DD)	2006.03.20
V&V Edition	1
V&V Disposition and Status	OK
V&V Charge Time	5.42079997

A.2 Comments