

V&V Reference Report

L2 ASCDS Version : 8.5.1.1

Observation 59678 - L2 Version 3
Chandra X-Ray Center

L2 Processing Date : Dec 22 2012

Contents

1	Front	2
2	OBI	3
2.1	OBI	3
2.1.1	Images	3
2.1.2	Bias	3
2.1.3	Parameters	4
2.1.4	Events	4
2.2	Compared Parameters	5
2.3	Star Slots	6
2.4	FID Slots	6
A	Summary	7
A.1	Status	7
A.2	Comments	7

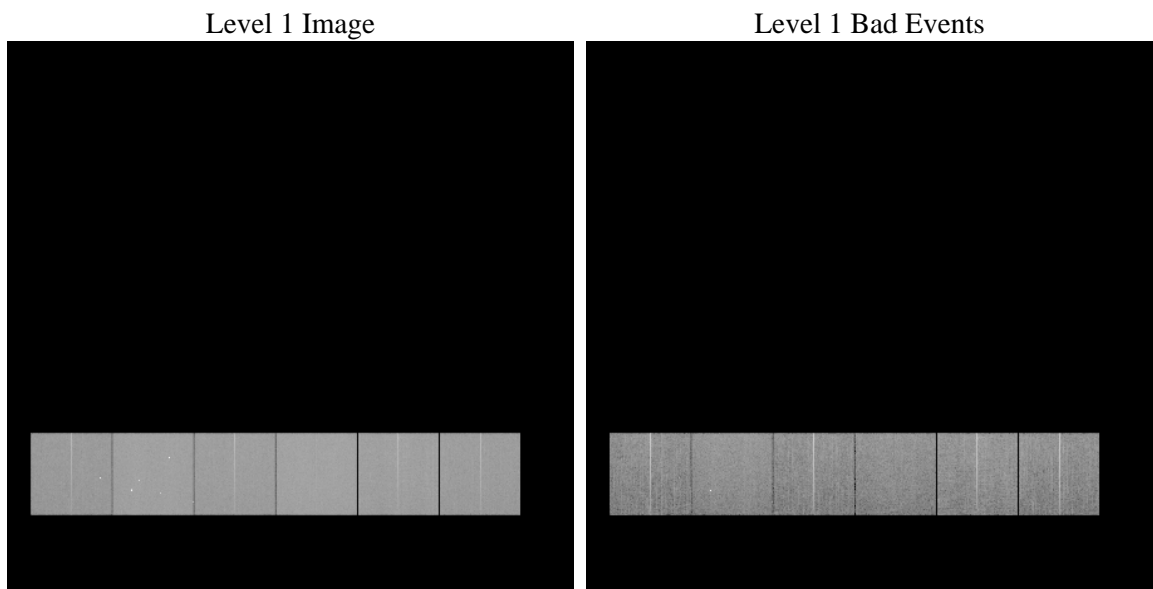
1 Front

seq_num	 	Sequence number
obs_id	59678	Observation id
title	ACIS-456789 diagnostics	Proposal title
observer	CHANDRA engineering request/realtime commanding	Principal investig
object	 	Source name
dtcycle	0	
cycle	P	events from which exps? Prim/Second/Both
ra_targ	0.0	Observer's specified target RA [deg]
dec_targ	0.0	Observer's specified target Dec [deg]
ra_nom	260.97286638076	Nominal RA [deg]
dec_nom	13.009601452562	Nominal Dec [deg]
roll_nom	121.09194746942	Nominal Roll [deg]
revision	3	Processing version of data
ontime	15795.199941158	Sum of GTIs [s]
livetime	15595.191608776	Livetime [s]
ontime4	12499.274417758	Sum of GTIs [s]
ontime5	15795.199941158	Sum of GTIs [s]
ontime6	13704.765972406	Sum of GTIs [s]
ontime7	15795.199941158	Sum of GTIs [s]
ontime8	13967.284858823	Sum of GTIs [s]
ontime9	13325.560883492	Sum of GTIs [s]
l2events	2044822	Number of level 2 events

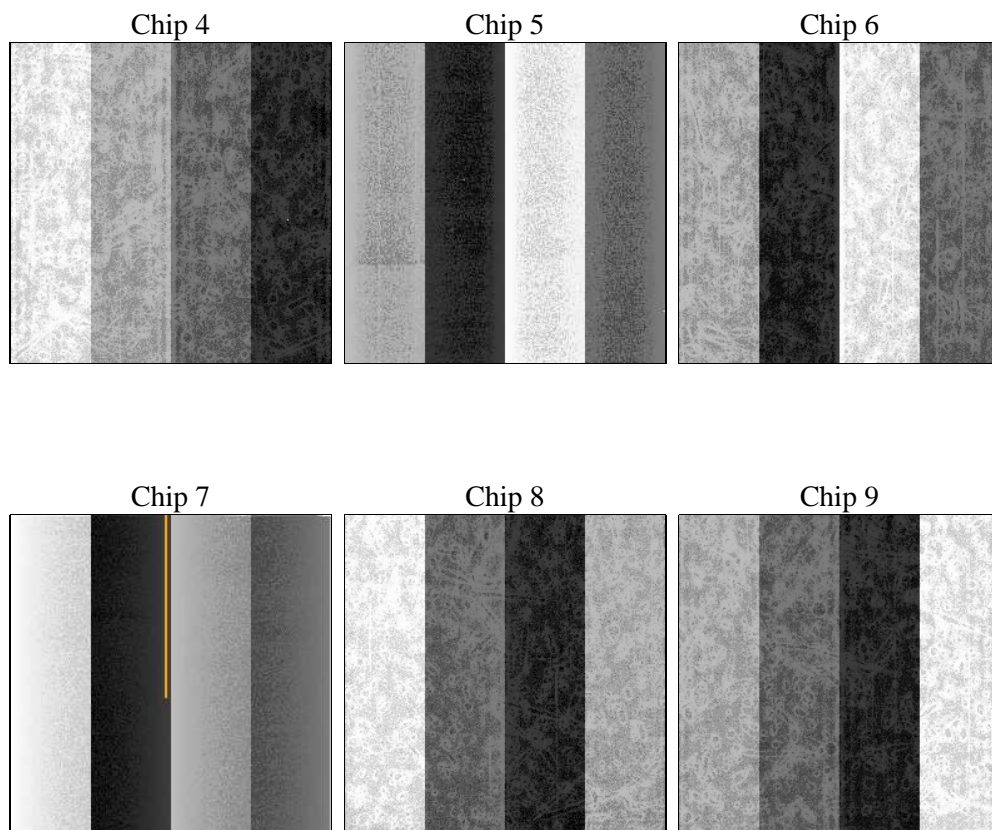
2 OBI

2.1 OBI

2.1.1 Images



2.1.2 Bias



2.1.3 Parameters

obi_num	0	Obi number	sched_exp_time	0.0	[s] Scheduled observation exposure time
ascdsver	8.5.1.1	Processing system revision	ontime	15795.199941158	Sum of GTIs [s]
caldsver	4.5.5	 	ontime4	12499.274417758	Sum of GTIs [s]
date	2012-12-22T20:36:55	Date and time of file creation	ontime5	15795.199941158	Sum of GTIs [s]
revision	3	Processing version of data	ontime6	13704.765972406	Sum of GTIs [s]
			ontime7	15795.199941158	Sum of GTIs [s]
			ontime8	13967.284858823	Sum of GTIs [s]
			ontime9	13325.560883492	Sum of GTIs [s]
			l1events	2823963	Number of level 1 events

2.1.4 Events

	ccd 4	ccd 5	ccd 6	ccd 7	ccd 8	ccd 9		ccd 4	ccd 5	ccd 6	ccd 7	ccd 8	ccd 9
level 1 events	400255	511034	455487	535350	489090	432747	grade 0 events	173827	85373	190670	103665	199007	179095
rejected events	101385	114507	104152	99673	119590	105274		43%	16%	41%	19%	40%	41%
rejected %	25%	22%	22%	18%	24%	24%	grade 1 events	1341	1393	1003	304	1115	1109
								0%	0%	0%	0%	0%	0%
							grade 2 events	47128	143186	60884	96048	65337	56584
								11%	28%	13%	17%	13%	13%
							grade 3 events	20013	22558	22010	43600	24489	21255
								5%	4%	4%	8%	5%	4%
							grade 4 events	19711	22180	21772	43509	24153	21089
								4%	4%	4%	8%	4%	4%
							grade 5 events	5862	17607	6786	17636	8336	7038
								1%	3%	1%	3%	1%	1%
							grade 6 events	38191	123230	55999	148855	56514	49450
								9%	24%	12%	27%	11%	11%
							grade 7 events	94182	95507	96363	81733	110139	97127
								23%	18%	21%	15%	22%	22%

2.2 Compared Parameters

Parameter	Planned	Actual
Instrument	ACIS	ACIS
Detector	ACIS-456789	ACIS-456789
Grating	NONE	NONE
Data mode	FAINT	FAINT
Observation mode	SECONDARY	SECONDARY
[deg] Pointing RA	0	260.9728663807586
[deg] Pointing Dec	0	13.00960145256218
[deg] Pointing Roll	0.0	121.0919474694232
[mm] SIM focus pos	-0.684267	-0.7809083437167272
[mm] SIM defocus	0	0.7524282956875696
[mm] SIM translation stage pos	-190.132523	250.4635187648994
[mm] SIM translation stage offset	0	-0.007540371344731511
[s] Observation start time (MET)	231189724.051919	231189723.02691
Observation start date	2005-04-29T19:22:04	2005-04-29T19:22:03
[s] Observation end time (MET)	231213376.952996	231213375.92799
Observation end date	2005-04-30T01:56:17	2005-04-30T01:56:15
Read mode	TIMED	TIMED

Parameter	Planned	Actual
Obspar format version number	7	7
Obspar file type	PREDICTED	ACTUAL
Obspar update status	NONE	UPDATED
On-chip summing requested	N	N
Subarray requested	NONE	NONE
Alternating exposures requested	N	N
[s] Primary exposure time	3.2	3.2

2.3 Star Slots

2.4 FID Slots

A Summary

A.1 Status

V&V Scientist	Beth Sundheim
V&V Date (YYYY-MM-DD)	2013.01.15
V&V Edition	1
V&V Disposition and Status	OK
V&V Charge Time	15.795199941158

A.2 Comments