

# V&V Reference Report

## L2 ASCDS Version : 7.6.7.1

Observation 59598 - L2 Version 002  
Chandra X-Ray Center

L2 Processing Date : Mar 12 2006

## Contents

|          |                               |          |
|----------|-------------------------------|----------|
| <b>1</b> | <b>Front</b>                  | <b>2</b> |
| <b>2</b> | <b>OBI</b>                    | <b>3</b> |
| 2.1      | OBI . . . . .                 | 3        |
| 2.1.1    | Images . . . . .              | 3        |
| 2.1.2    | Bias . . . . .                | 3        |
| 2.1.3    | Parameters . . . . .          | 4        |
| 2.1.4    | Events . . . . .              | 4        |
| 2.2      | Compared Parameters . . . . . | 5        |
| 2.3      | Aspect . . . . .              | 6        |
| 2.4      | Star Slots . . . . .          | 8        |
| 2.5      | FID Slots . . . . .           | 8        |
| <b>A</b> | <b>Summary</b>                | <b>9</b> |
| A.1      | Status . . . . .              | 9        |
| A.2      | Comments . . . . .            | 9        |

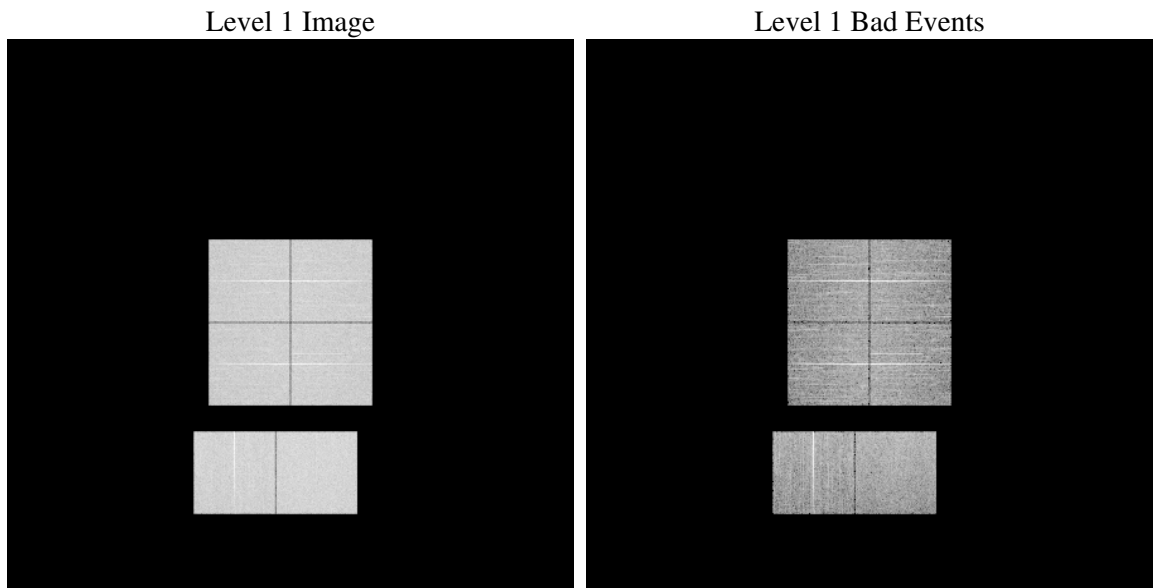
# 1 Front

|          |   |
|----------|---|
| seq_num  | &#160   |
| obs_id   | 59598   |
| title    | ACIS-012367 diagnostics                         |
| observer | CHANDRA engineering request/realtime commanding |
| object   | &#160   |
| dtcycle  | 0   |
| cycle    | P   |
| ra_targ  | 0.0   |
| dec_targ | 0.0   |
| ra_nom   | 257.98834318144                                 |
| dec_nom  | -1.0261055447046                                |
| roll_nom | 213.05710095558                                 |
| revision | 2   |
| ontime   | 8204.7999694347                                 |
| livetime | 8100.9058518843                                 |
| ontime0  | 7559.8454007208                                 |
| ontime1  | 7695.9667022526                                 |
| ontime2  | 7294.0852169096                                 |
| ontime3  | 7414.0012275875                                 |
| ontime6  | 7968.208568275                                  |
| ontime7  | 8204.7999694347                                 |
| l2events | 1071414   |

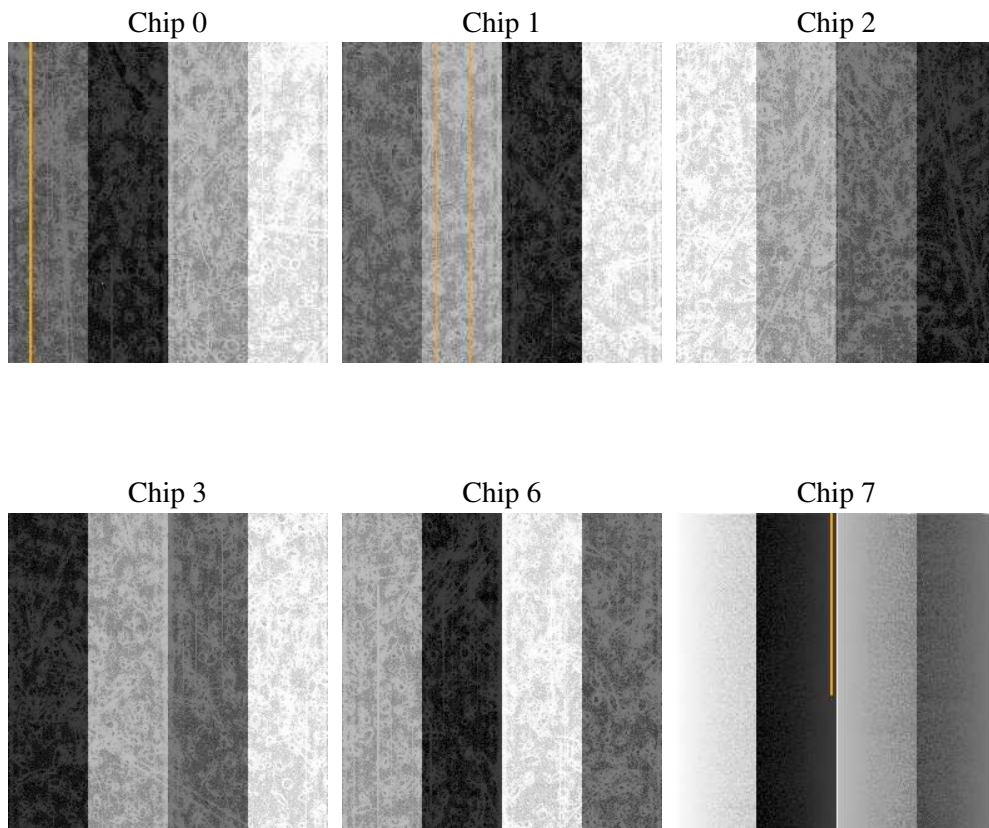
## 2 OBI

### 2.1 OBI

#### 2.1.1 Images



#### 2.1.2 Bias



### 2.1.3 Parameters

|          |                     |
|----------|---------------------|
| obi_num  | 0                   |
| ascdsver | 7.6.7.1             |
| caldbver | 3.2.1               |
| date     | 2006-03-12T05:45:08 |
| revision | 2                   |

|                |                 |
|----------------|-----------------|
| sched_exp_time | 0.0             |
| ontime         | 8280.7751082182 |
| ontime0        | 7635.8205395043 |
| ontime1        | 7768.700860709  |
| ontime2        | 7360.3374047875 |
| ontime3        | 7483.4943957329 |
| ontime6        | 8040.9427267909 |
| ontime7        | 8280.7751082182 |
| l1events       | 1488690         |

### 2.1.4 Events

|                 | ccd 0  | ccd 1  | ccd 2  | ccd 3  | ccd 6  | ccd 7  |
|-----------------|--------|--------|--------|--------|--------|--------|
| level 1 events  | 237384 | 242891 | 233162 | 238724 | 261838 | 274691 |
| rejected events | 56544  | 58288  | 57759  | 59747  | 63900  | 65540  |
| rejected %      | 23%    | 23%    | 24%    | 25%    | 24%    | 23%    |

|                | ccd 0  | ccd 1  | ccd 2 | ccd 3  | ccd 6  | ccd 7 |
|----------------|--------|--------|-------|--------|--------|-------|
| grade 0 events | 100066 | 100671 | 99017 | 101493 | 107203 | 32649 |
|                | 42%    | 41%    | 42%   | 42%    | 40%    | 11%   |
| grade 1 events | 601    | 551    | 674   | 720    | 555    | 119   |
|                | 0%     | 0%     | 0%    | 0%     | 0%     | 0%    |
| grade 2 events | 31669  | 34022  | 29666 | 30331  | 35081  | 65478 |
|                | 13%    | 14%    | 12%   | 12%    | 13%    | 23%   |
| grade 3 events | 11760  | 11728  | 11630 | 11686  | 12060  | 13950 |
|                | 4%     | 4%     | 4%    | 4%     | 4%     | 5%    |
| grade 4 events | 11788  | 11733  | 11365 | 11795  | 12253  | 13679 |
|                | 4%     | 4%     | 4%    | 4%     | 4%     | 4%    |
| grade 5 events | 3355   | 3454   | 3057  | 3484   | 3725   | 6924  |
|                | 1%     | 1%     | 1%    | 1%     | 1%     | 2%    |
| grade 6 events | 27225  | 28148  | 25222 | 25289  | 33048  | 85225 |
|                | 11%    | 11%    | 10%   | 10%    | 12%    | 31%   |
| grade 7 events | 50920  | 52584  | 52531 | 53926  | 57913  | 56667 |
|                | 21%    | 21%    | 22%   | 22%    | 22%    | 20%   |

## 2.2 Compared Parameters

| Parameter                         | Planned             | Actual               | Parameter                       | Planned   | Actual  |
|-----------------------------------|---------------------|----------------------|---------------------------------|-----------|---------|
| Instrument                        | ACIS                | ACIS                 | Obspar format version number    | 6         | 6       |
| Detector                          | ACIS-012367         | ACIS-012367          | Obspar file type                | PREDICTED | ACTUAL  |
| Grating                           | NONE                | NONE                 | Obspar update status            | NONE      | UPDATED |
| Data mode                         | FAINT               | FAINT                | On-chip summing requested       | N         | N       |
| Observation mode                  | SECONDARY           | SECONDARY            | Subarray requested              | NONE      | NONE    |
| Pointing RA                       | 0                   | 257.988343181439     | Alternating exposures requested | N         | N       |
| Pointing Dec                      | 0                   | -1.02610554470462    | Primary exposure time           | 3.2       | 3.2     |
| Pointing Roll                     | 0.0                 | 213.0571009555759    |                                 |           |         |
| SIM focus pos (mm)                | -0.782348           | -0.6828225247311905  |                                 |           |         |
| SIM defocus (mm)                  | 0                   | 0.8505141146731063   |                                 |           |         |
| SIM translation stage pos (mm)    | -233.592463         | 250.466033080201     |                                 |           |         |
| SIM translation stage offset (mm) | 0                   | -0.01005468664627074 |                                 |           |         |
| Observation start time            | 236034249.422764    | 236034248.39779      |                                 |           |         |
| Observation start date            | 2005-06-24T21:04:09 | 2005-06-24T21:04:08  |                                 |           |         |
| Observation end time              | 236055559.173756    | 236055558.14876      |                                 |           |         |
| Observation end date              | 2005-06-25T02:59:19 | 2005-06-25T02:59:18  |                                 |           |         |
| Read mode                         | TIMED               | TIMED                |                                 |           |         |

## 2.3 Aspect



## **2.4 Star Slots**

## **2.5 FID Slots**



# A Summary

## A.1 Status

|                            |            |
|----------------------------|------------|
| V&V Scientist              | Jen Lauer  |
| V&V Date (YYYY-MM-DD)      | 2006.03.13 |
| V&V Edition                | 1          |
| V&V Disposition and Status | OK         |
| V&V Charge Time            | 8.20479996 |

## A.2 Comments

ACIS focal plane temperature above the calibration limits after the first 2ksec of the observation.