

# V&V Reference Report

## L2 ASCDS Version : 7.6.7

Observation 5928 - L2 Version 3  
Chandra X-Ray Center

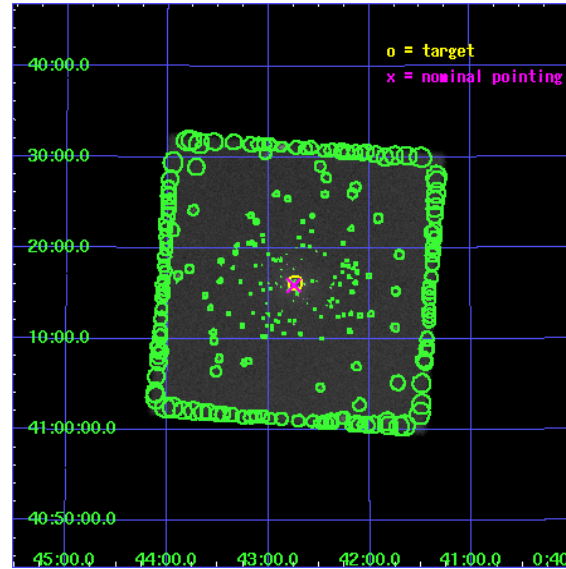
L2 Processing Date : Nov 24 2007

## Contents

<b>1</b>	<b>Front</b>	<b>2</b>
<b>2</b>	<b>OBI</b>	<b>3</b>
2.1	OBI . . . . .	3
2.1.1	Images . . . . .	3
2.1.2	Parameters . . . . .	4
2.1.3	Events . . . . .	4
2.2	Compared Parameters . . . . .	5
2.3	Aspect . . . . .	6
2.4	Star Slots . . . . .	9
2.4.1	Slot 3 . . . . .	9
2.4.2	Slot 4 . . . . .	10
2.4.3	Slot 5 . . . . .	11
2.4.4	Slot 6 . . . . .	12
2.4.5	Slot 7 . . . . .	13
2.5	FID Slots . . . . .	14
2.5.1	Slot 0 . . . . .	14
2.5.2	Slot 1 . . . . .	15
2.5.3	Slot 2 . . . . .	16
<b>3</b>	<b>Point Sources</b>	<b>17</b>
<b>A</b>	<b>Summary</b>	<b>18</b>
A.1	Status . . . . .	18
A.2	Comments . . . . .	18

# 1 Front

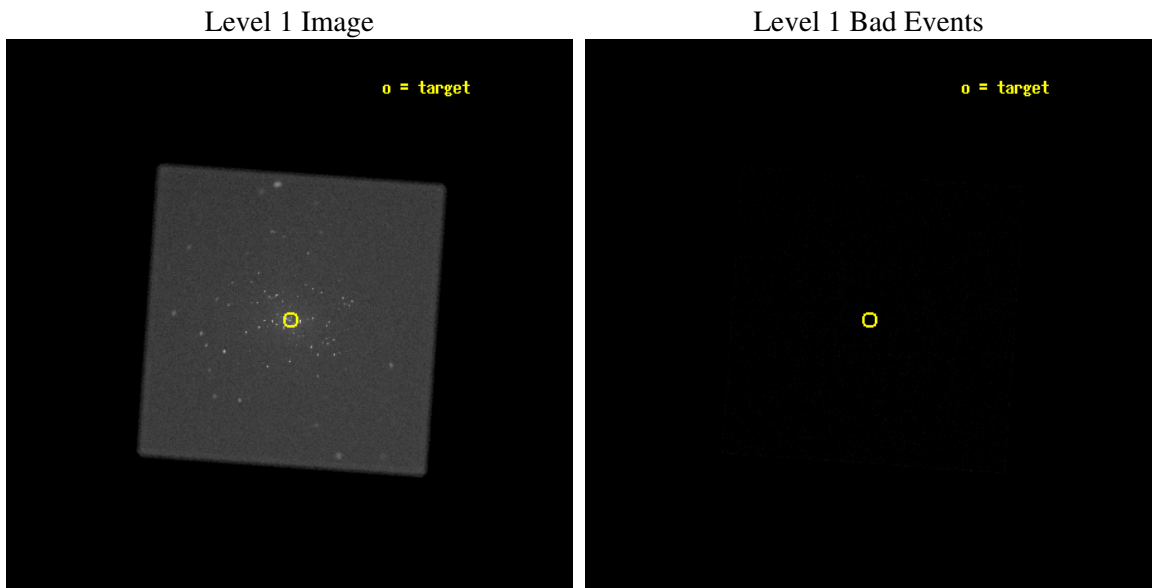
seq_num	600447
obs_id	5928
title	M31* - The Nearest Extra-galactic SuperMassive Black Hole
observer	Dr Michael Garcia
object	M31*
ra_targ	10.685
dec_targ	41.268972
ra_nom	10.687424610289
dec_nom	41.265282160856
roll_nom	319.06808568224
revision	3
ontime	45156.377044082
livetime	44855.758342636
l2events	1673518



## 2 OBI

### 2.1 OBI

#### 2.1.1 Images



### 2.1.2 Parameters

obi_num	0
ascdsver	7.6.11.2
caldbver	3.4.1
date	2007-11-24T07:09:36
revision	3

sched_exp_time	45000.000000
ontime	45156.377044082
l1events	2549409

### 2.1.3 Events

#### Level 1 Events

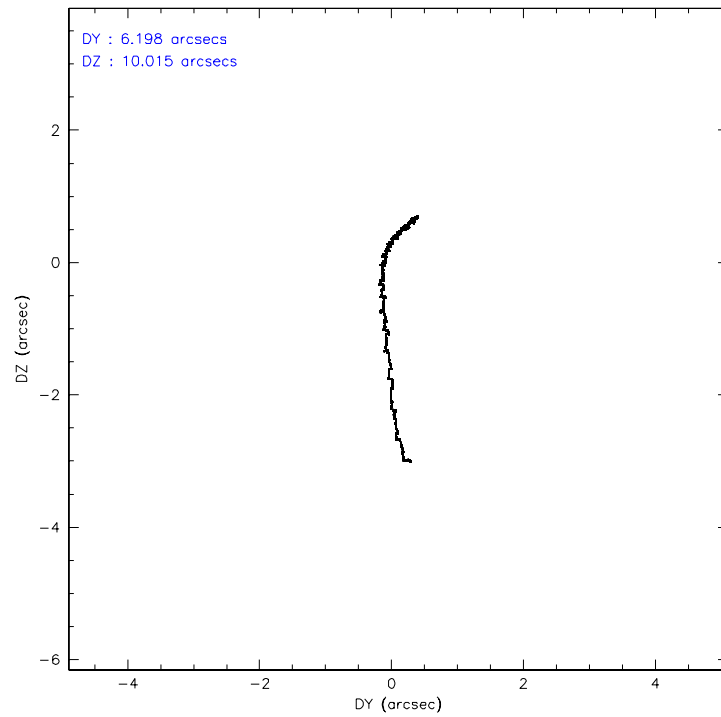
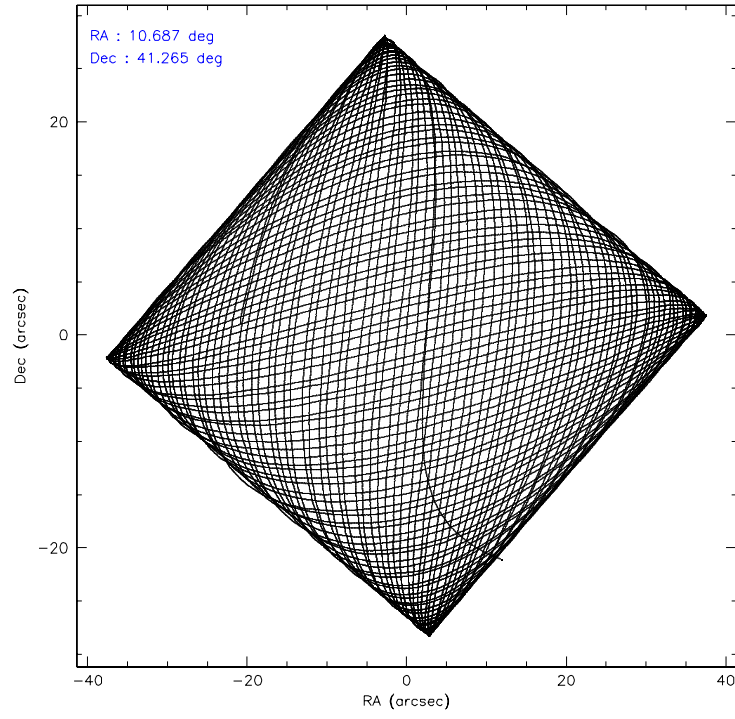
	<b>segment 0</b>
level 1 events	2549409
rejected events	108482
rejected %	4%

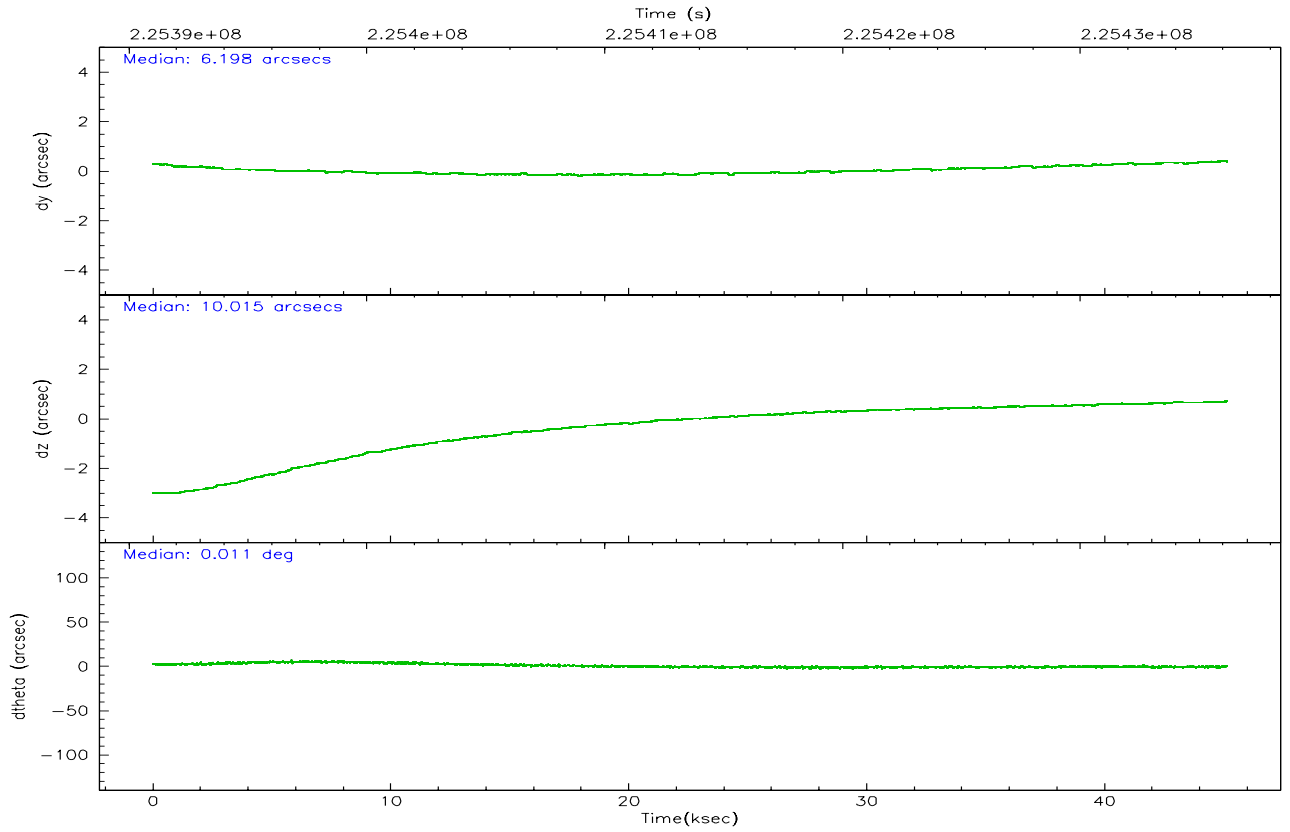
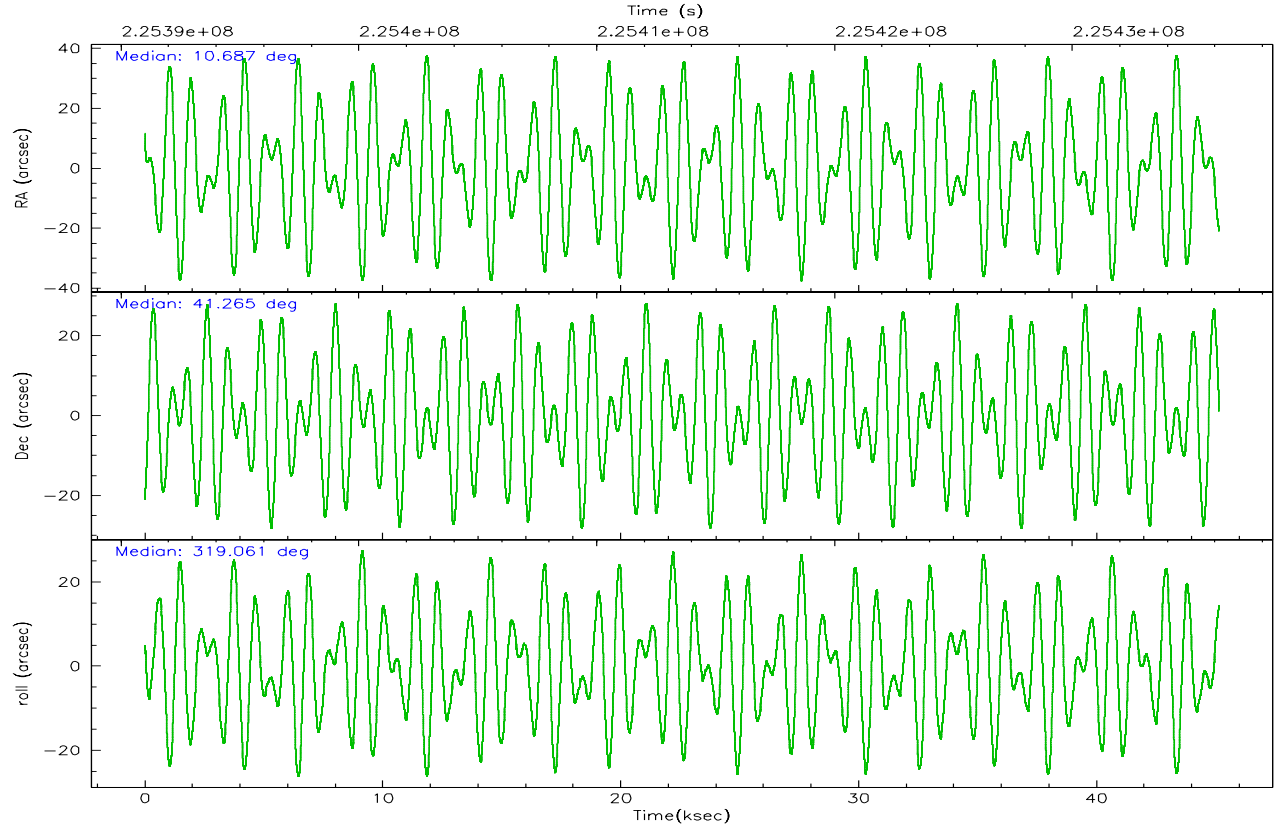


## 2.2 Compared Parameters

Parameter	Planned	Actual	Parameter	Planned	Actual
Instrument	HRC	HRC	Obspar format version number	6	6
Detector	HRC-I	HRC-I	Obspar file type	PREDICTED	ACTUAL
Grating	NONE	NONE	Obspar update status	NONE	UPDATED
Data mode	OBSERVING	OBSERVING			
Observation mode	POINTING	POINTING			
Pointing RA	10.651908	10.6874246102887			
Pointing Dec	41.269760	41.2652821608556			
Pointing Roll	319.187003	319.0680856822414			
SIM focus pos (mm)	-1.040293	-1.038866356238299			
SIM defocus (mm)	0	0.001426264420575141			
SIM translation stage pos (mm)	126.985494	126.9829799899862			
SIM translation stage offset (mm)	0	0.002508901615314585			
Observation start time	225391168.184000	225389870.96367			
Observation start date	2005-02-21T16:38:24	2005-02-21T16:17:50			
Observation end time	225436168.184000	225437142.42831			
Observation end date	2005-02-22T05:08:24	2005-02-22T05:25:42			

## 2.3 Aspect



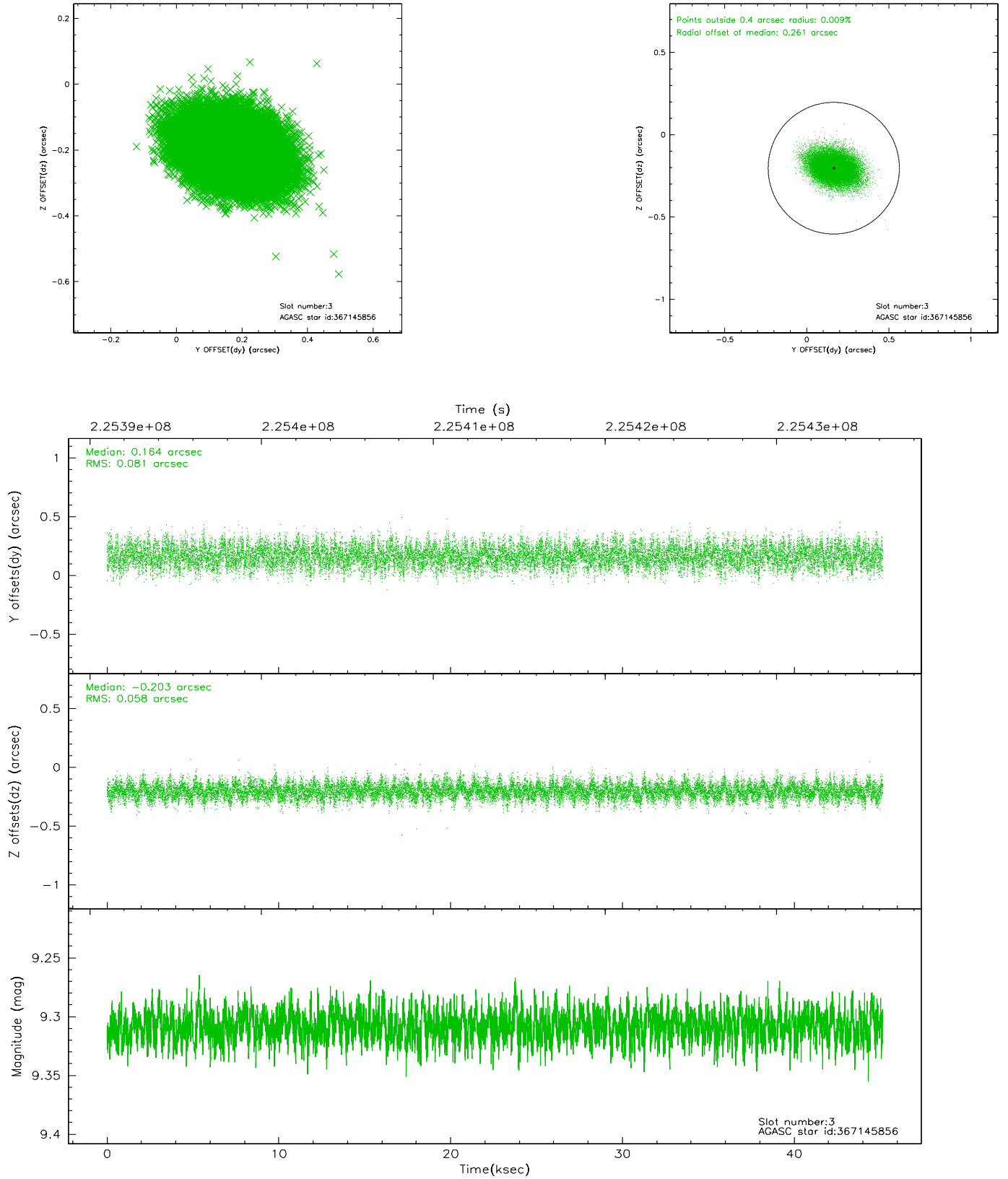


### Slot Statistics

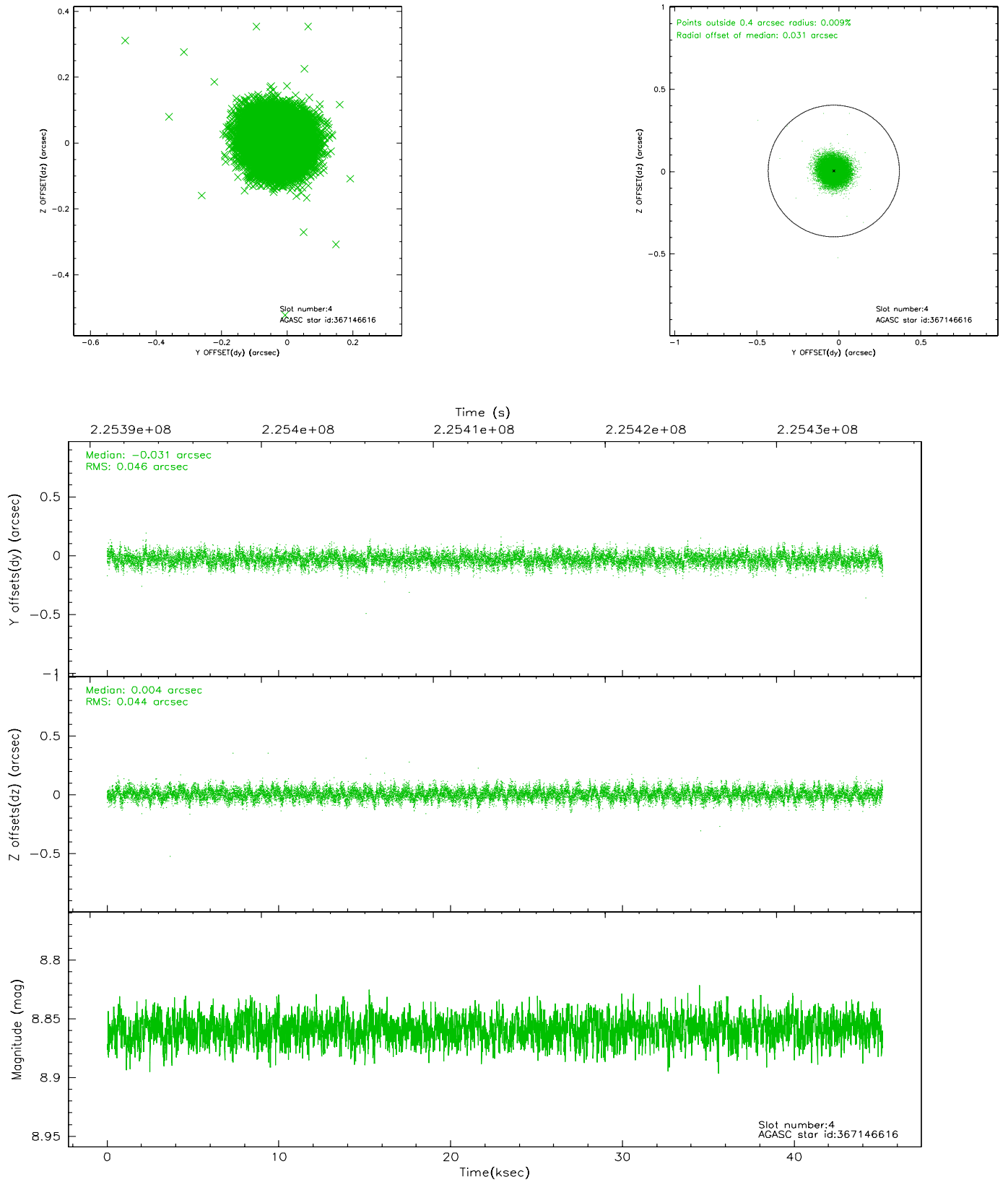
slot	status	id	mag	n_pts	med_dy	med_dz	dr1	dr2	ra	dec	mean_y	mean_z
0	FID	HRC-I-1	6.98	11014	-0.008	-0.052	0.020	0.047	0.000000	0.000000	-761.88	-1297.51
1	FID	HRC-I-2	7.02	11013	0.071	-0.039	0.020	0.049	0.000000	0.000000	850.77	-1299.28
2	FID	HRC-I-4	7.02	11014	0.056	-0.002	0.015	0.033	0.000000	0.000000	1281.18	1004.48
3	GUIDE	367145856	9.31	22014	0.164	-0.203	0.105	0.174	10.744946	40.402085	2235.38	-2197.42
4	GUIDE	367146616	8.86	22022	-0.031	0.004	0.068	0.110	11.418645	41.190163	1753.67	1147.81
5	GUIDE	367148872	7.22	22029	-0.084	-0.084	0.076	0.116	10.505940	40.688258	1067.23	-1844.78
6	GUIDE	367663272	9.29	22017	-0.123	0.107	0.084	0.138	10.656279	41.699429	-1002.16	1177.83
7	GUIDE	367657272	8.46	22019	0.073	0.175	0.065	0.104	11.834471	41.298907	2337.96	2186.86

## 2.4 Star Slots

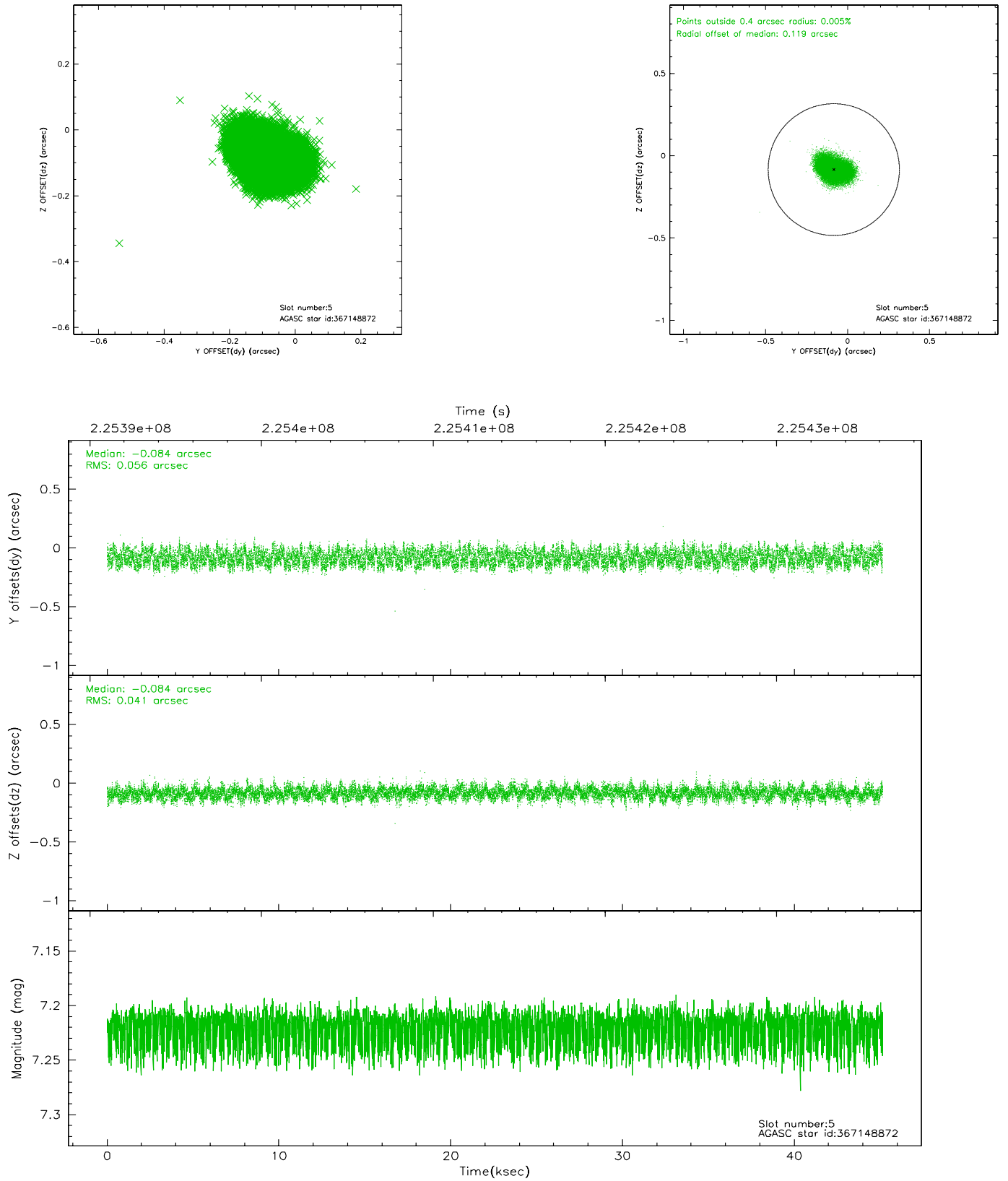
### 2.4.1 Slot 3



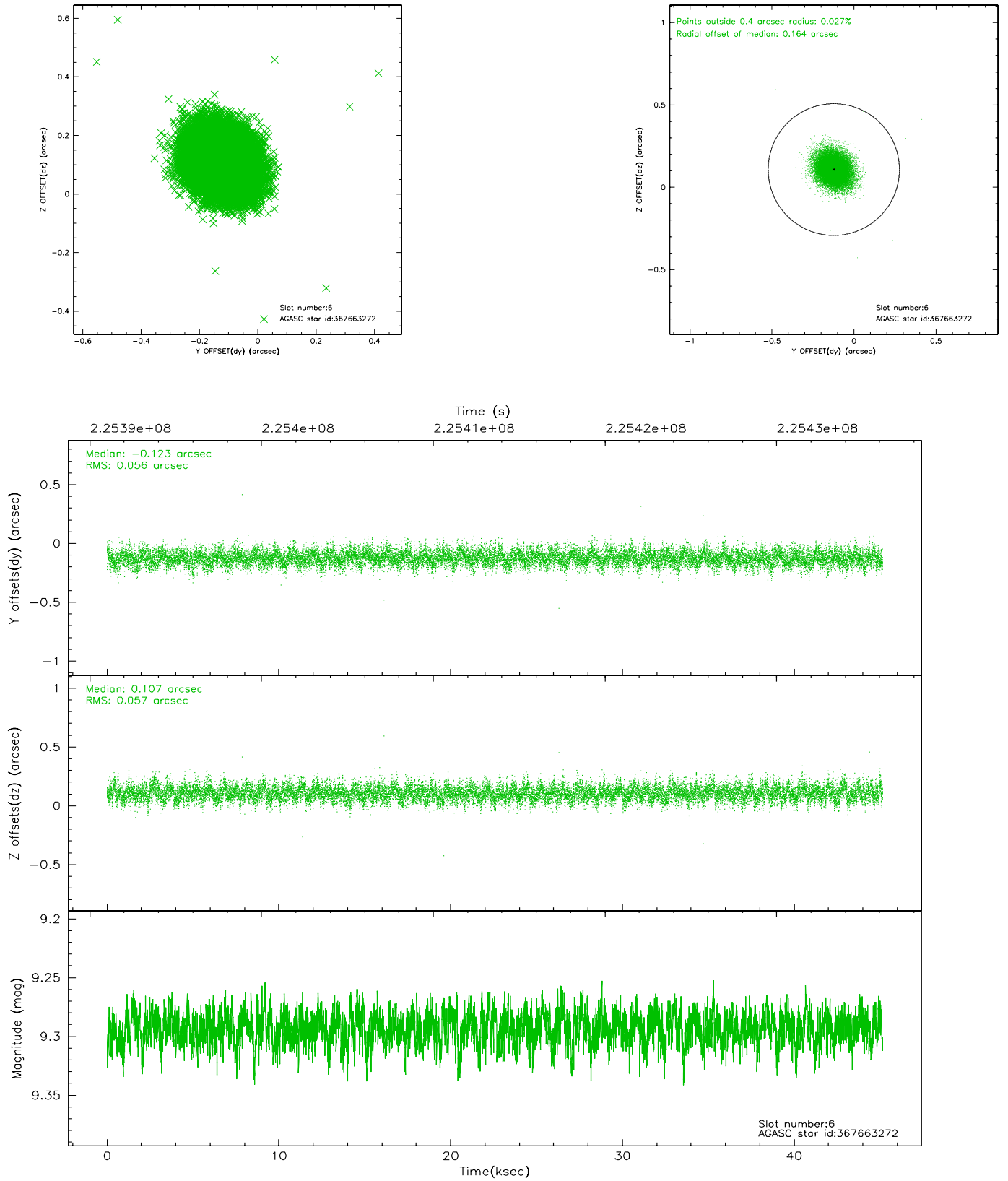
## 2.4.2 Slot 4



### 2.4.3 Slot 5

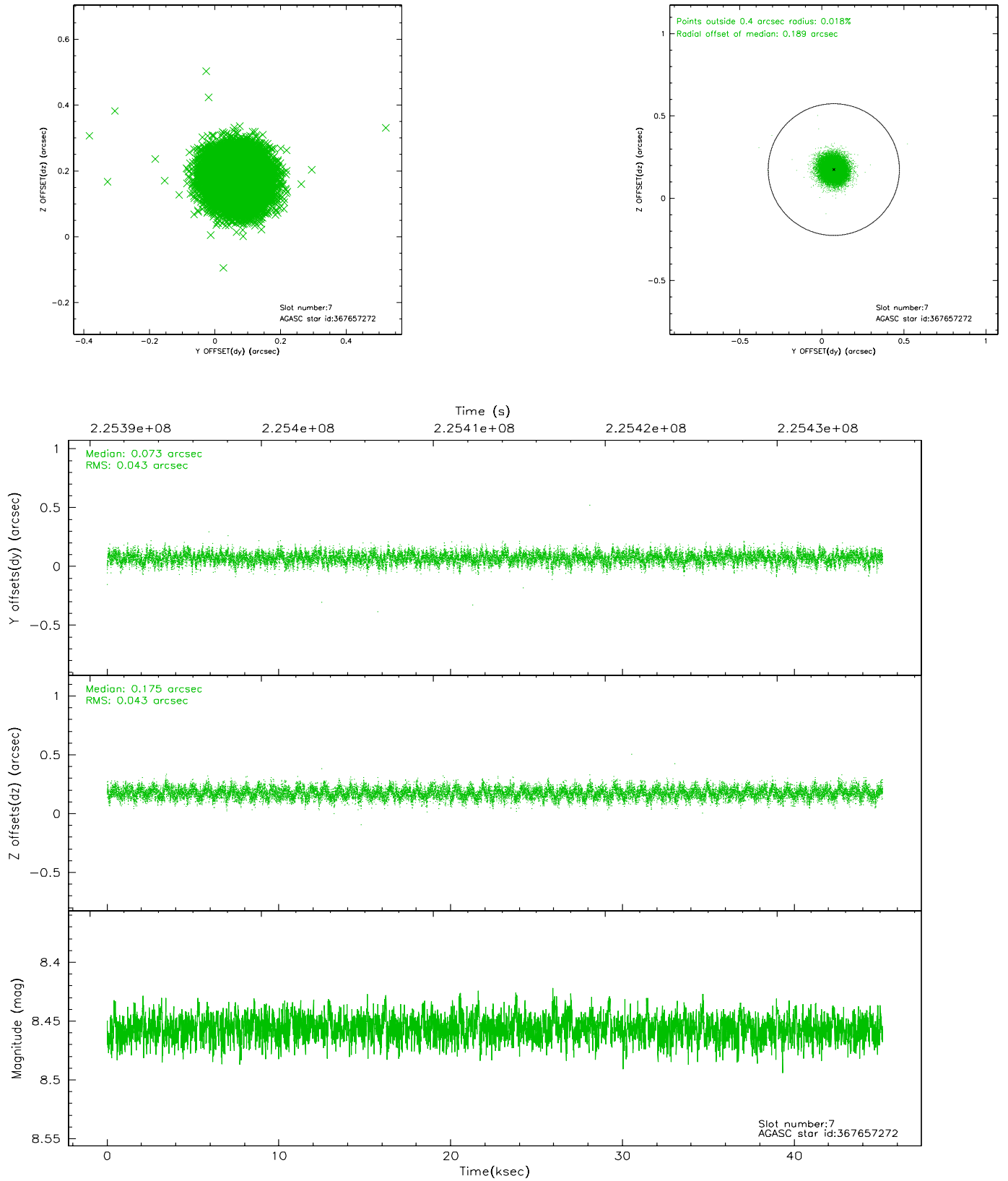


## 2.4.4 Slot 6



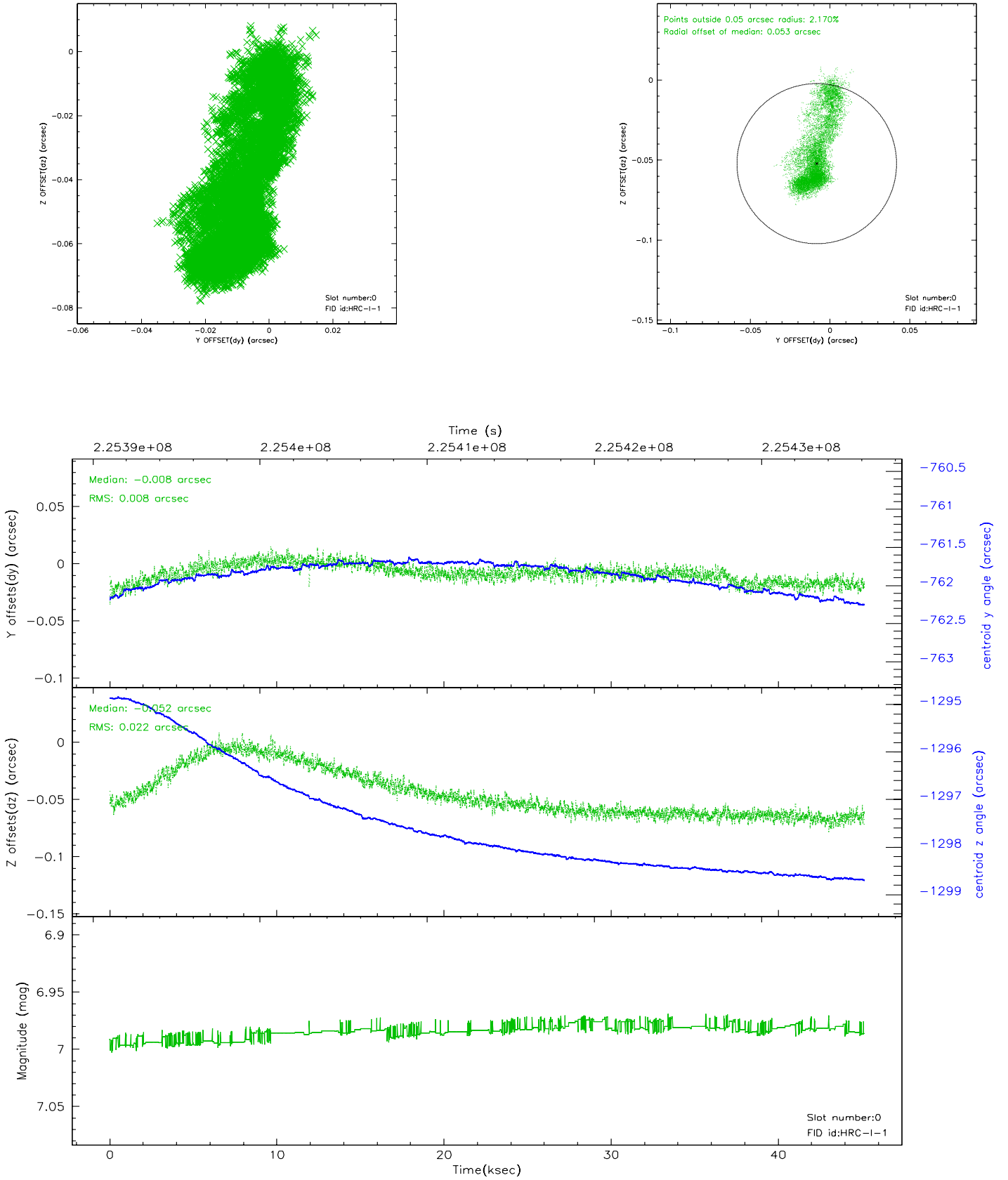


## 2.4.5 Slot 7

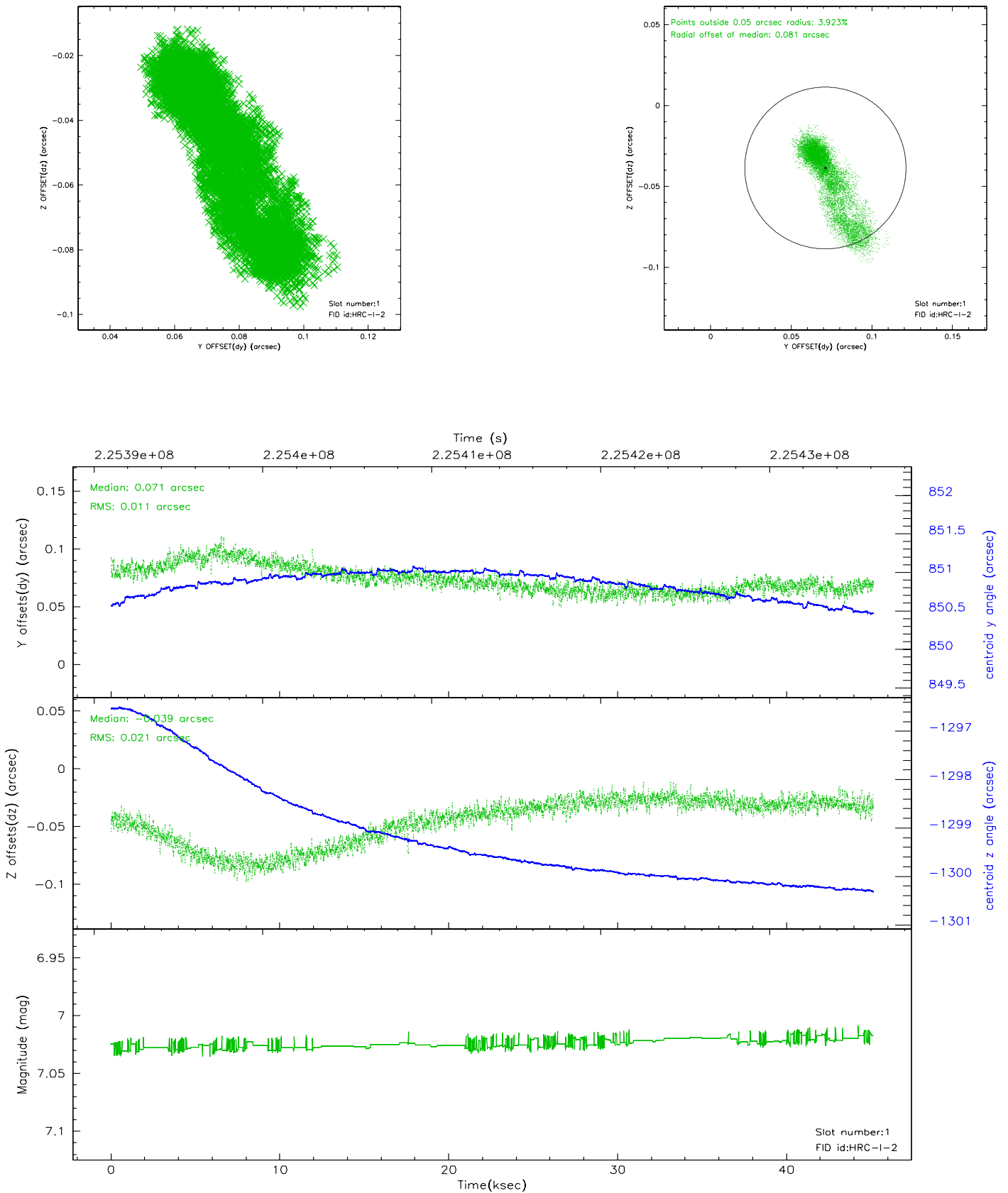


## 2.5 FID Slots

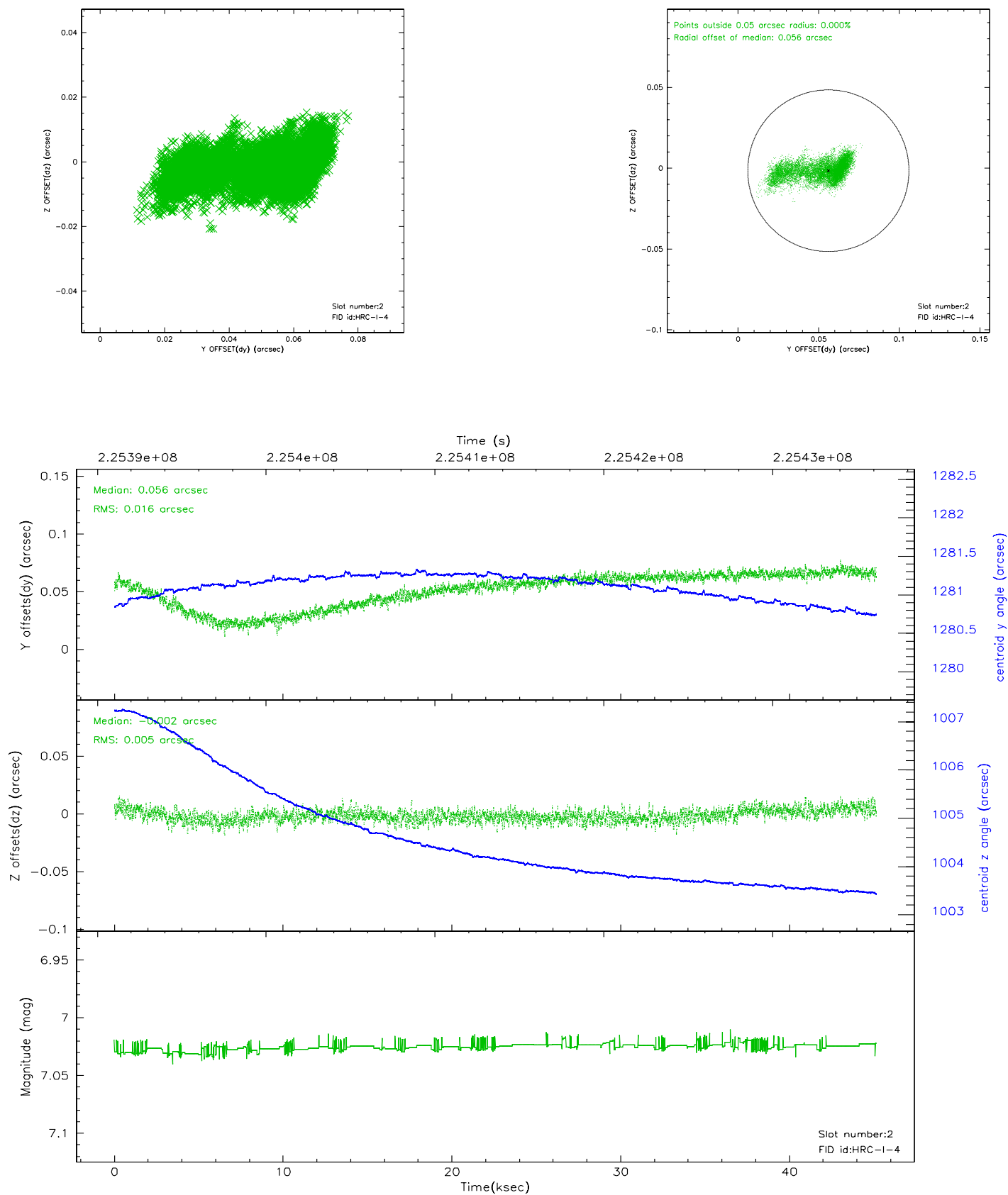
### 2.5.1 Slot 0



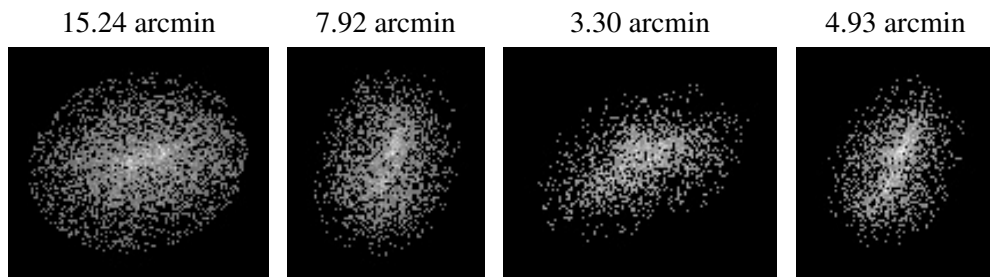
## 2.5.2 Slot 1



### 2.5.3 Slot 2



### 3 Point Sources



# A Summary

## A.1 Status

V&V Scientist	Beth Sundheim
V&V Date (YYYY-MM-DD)	2007.12.06
V&V Edition	1
V&V Disposition and Status	OK
V&V Charge Time	45.15637

## A.2 Comments

The current observation has been reprocessed as part of Repro III ('C' supplement) the purpose of which is to update all HRC-I ObsIDs since Jan 2000 to the latest calibrations available for that configuration. Specifically, we are updating the DEGAP solution and the Gain Maps applied. For more information see the Repro IIIC web page at:

<http://asc.harvard.edu/cda/repro3.html#IIIC>

and the associated links.