

V&V Reference Report

L2 ASCDS Version : 8.4.3.1

Observation 58608 - L2 Version 2
Chandra X-Ray Center

L2 Processing Date : Apr 16 2012

Contents

1	Front	2
2	OBI	3
2.1	OBI	3
2.1.1	Images	3
2.1.2	Bias	3
2.1.3	Parameters	4
2.1.4	Events	4
2.2	Compared Parameters	5
2.3	Star Slots	6
2.4	FID Slots	6
A	Summary	7
A.1	Status	7
A.2	Comments	7

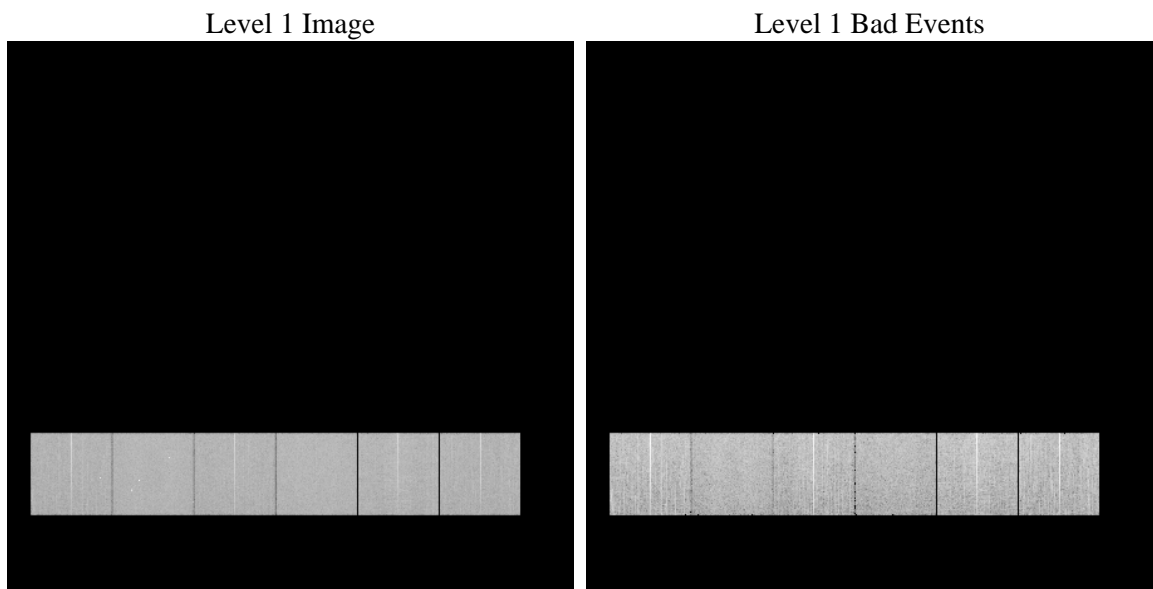
1 Front

seq_num	 	Sequence number
obs_id	58608	Observation id
title	ACIS-456789 diagnostics	Proposal title
observer	CHANDRA engineering request/realtime commanding	Principal investig
object	 	Source name
dtcycle	0	
cycle	P	events from which exps? Prim/Second/Both
ra_targ	0.0	Observer's specified target RA [deg]
dec_targ	0.0	Observer's specified target Dec [deg]
ra_nom	110.02023835697	Nominal RA [deg]
dec_nom	-4.97951686813	Nominal Dec [deg]
roll_nom	12.608534911217	Nominal Roll [deg]
revision	2	Processing version of data
ontime	7775.9999710917	Sum of GTIs [s]
livetime	7677.5355773127	Livetime [s]
ontime4	7775.9999710917	Sum of GTIs [s]
ontime5	7775.9999710917	Sum of GTIs [s]
ontime6	7775.9999710917	Sum of GTIs [s]
ontime7	7775.9999710917	Sum of GTIs [s]
ontime8	7775.9999710917	Sum of GTIs [s]
ontime9	7775.9999710917	Sum of GTIs [s]
l2events	768395	Number of level 2 events

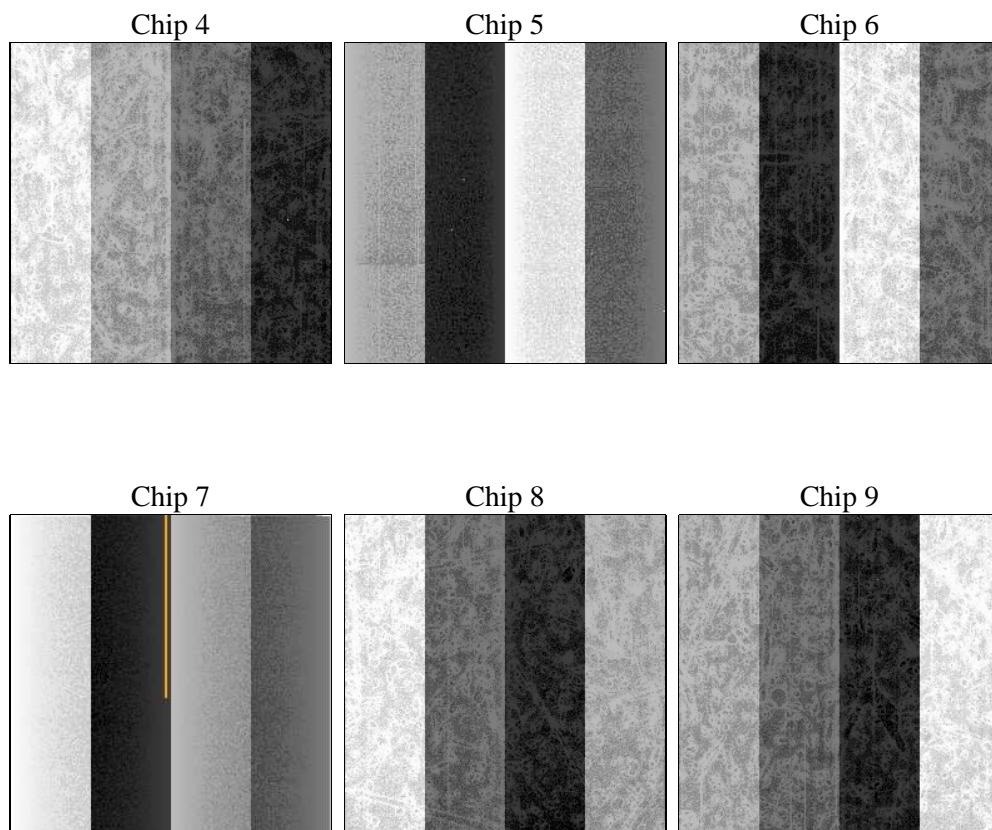
2 OBI

2.1 OBI

2.1.1 Images



2.1.2 Bias



2.1.3 Parameters

obi_num	0	Obi number	sched_exp_time	0.0	[s] Scheduled observation exposure time
ascdsver	8.4.3.1	Processing system revision	ontime	7775.9999710917	Sum of GTIs [s]
caldsver	4.4.9	 	ontime4	7775.9999710917	Sum of GTIs [s]
date	2012-04-16T13:57:22	Date and time of file creation	ontime5	7775.9999710917	Sum of GTIs [s]
revision	2	Processing version of data	ontime6	7775.9999710917	Sum of GTIs [s]
			ontime7	7775.9999710917	Sum of GTIs [s]
			ontime8	7775.9999710917	Sum of GTIs [s]
			ontime9	7775.9999710917	Sum of GTIs [s]
			l1events	1223178	Number of level 1 events

2.1.4 Events

	ccd 4	ccd 5	ccd 6	ccd 7	ccd 8	ccd 9		ccd 4	ccd 5	ccd 6	ccd 7	ccd 8	ccd 9
level 1 events	194153	207702	198570	213211	212273	197269	grade 0 events	70958	25817	70942	33993	73843	69209
rejected events	71740	61932	66949	56941	72241	70383		36%	12%	35%	15%	34%	35%
rejected %	36%	29%	33%	26%	34%	35%	grade 1 events	627	186	408	164	440	498
								0%	0%	0%	0%	0%	0%
							grade 2 events	19191	53621	23114	34425	25027	21747
								9%	25%	11%	16%	11%	11%
							grade 3 events	8321	7358	8465	15098	9697	8233
								4%	3%	4%	7%	4%	4%
							grade 4 events	8311	7232	8169	14765	9532	8365
								4%	3%	4%	6%	4%	4%
							grade 5 events	3769	8570	3741	9477	5004	4292
								1%	4%	1%	4%	2%	2%
							grade 6 events	15681	51809	20981	58056	22011	19391
								8%	24%	10%	27%	10%	9%
							grade 7 events	67295	53109	62750	47233	66719	65534
								34%	25%	31%	22%	31%	33%

2.2 Compared Parameters

Parameter	Planned	Actual	Parameter	Planned	Actual
Instrument	ACIS	ACIS	Obspar format version number	7	7
Detector	ACIS-456789	ACIS-456789	Obspar file type	PREDICTED	ACTUAL
Grating	NONE	NONE	Obspar update status	NONE	UPDATED
Data mode	FAINT	FAINT	On-chip summing requested	N	N
Observation mode	SECONDARY	SECONDARY	Subarray requested	NONE	NONE
[deg] Pointing RA	0	110.0202383569719	Alternating exposures requested	N	N
[deg] Pointing Dec	0	-4.979516868130021	[s] Primary exposure time	3.2	3.2
[deg] Pointing Roll	0.0	12.60853491121732			
[mm] SIM focus pos	-0.684267	-0.7809083437167272			
[mm] SIM defocus	0	0.7524282956875696			
[mm] SIM translation stage pos	-190.132523	250.4635187648994			
[mm] SIM translation stage offset	0	-0.007540371344731511			
[s] Observation start time (MET)	284196537.56456	284196536.53956			
Observation start date	2007-01-03T07:28:58	2007-01-03T07:28:56			
[s] Observation end time (MET)	284207925.3151	284207924.2901			
Observation end date	2007-01-03T10:38:45	2007-01-03T10:38:44			
Read mode	TIMED	TIMED			

2.3 Star Slots

2.4 FID Slots

A Summary

A.1 Status

V&V Scientist	Jen Lauer
V&V Date (YYYY-MM-DD)	2012.04.19
V&V Edition	1
V&V Disposition and Status	OK
V&V Charge Time	7.7759999710917

A.2 Comments