

V&V Reference Report

L2 ASCDS Version : 8.4.4

Observation 58528 - L2 Version 3
Chandra X-Ray Center

L2 Processing Date : Apr 20 2012

Contents

1	Front	2
2	OBI	3
2.1	OBI	3
2.1.1	Images	3
2.1.2	Bias	3
2.1.3	Parameters	4
2.1.4	Events	4
2.2	Compared Parameters	5
2.3	Star Slots	6
2.4	FID Slots	6
A	Summary	7
A.1	Status	7
A.2	Comments	7

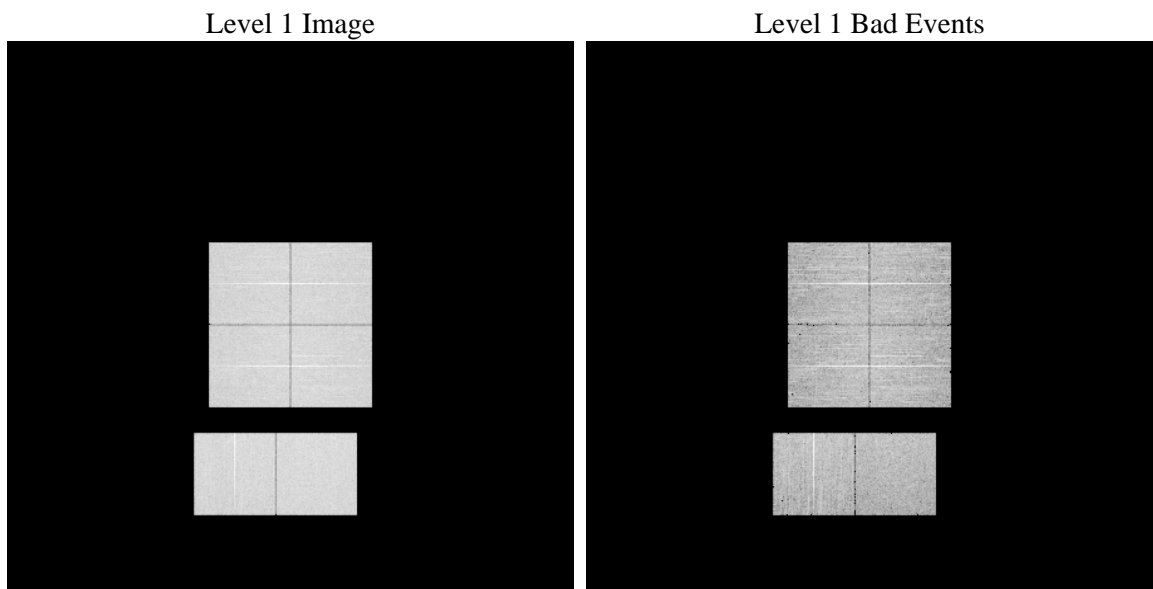
1 Front

seq_num	 	Sequence number
obs_id	58528	Observation id
title	ACIS-012367 diagnostics	Proposal title
observer	CHANDRA engineering request/realtime commanding	Principal investig
object	 	Source name
dtcycle	0	
cycle	P	events from which exps? Prim/Second/Both
ra_targ	0.0	Observer's specified target RA [deg]
dec_targ	0.0	Observer's specified target Dec [deg]
ra_nom	114.99758267968	Nominal RA [deg]
dec_nom	44.971400511561	Nominal Dec [deg]
roll_nom	233.76140437776	Nominal Roll [deg]
revision	3	Processing version of data
ontime	6466.6922738552	Sum of GTIs [s]
livetime	6384.807122509	Livetime [s]
ontime0	6463.4102335572	Sum of GTIs [s]
ontime1	6466.6101938486	Sum of GTIs [s]
ontime2	6466.5691538453	Sum of GTIs [s]
ontime3	6466.7333138585	Sum of GTIs [s]
ontime6	6463.2871831059	Sum of GTIs [s]
ontime7	6466.6922738552	Sum of GTIs [s]
l2events	703390	Number of level 2 events

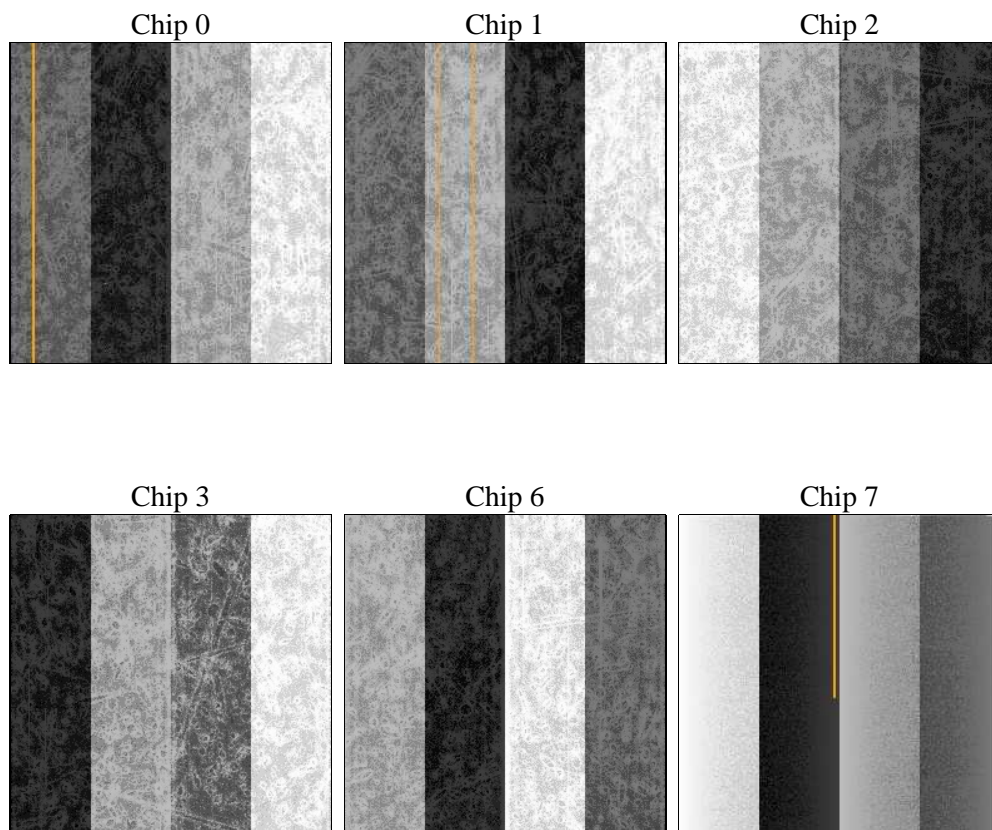
2 OBI

2.1 OBI

2.1.1 Images



2.1.2 Bias



2.1.3 Parameters

obi_num	0	Obi number	sched_exp_time	5100	[s] Scheduled observation exposure time
ascdsver	8.4.4	Processing system revision	ontime	6466.6922738552	Sum of GTIs [s]
caldsver	4.4.9	 	ontime0	6463.4102335572	Sum of GTIs [s]
date	2012-04-20T06:02:42	Date and time of file creation	ontime1	6466.6101938486	Sum of GTIs [s]
revision	3	Processing version of data	ontime2	6466.5691538453	Sum of GTIs [s]
			ontime3	6466.7333138585	Sum of GTIs [s]
			ontime6	6463.2871831059	Sum of GTIs [s]
			ontime7	6466.6922738552	Sum of GTIs [s]
			l1events	1087610	Number of level 1 events

2.1.4 Events

	ccd 0	ccd 1	ccd 2	ccd 3	ccd 6	ccd 7		ccd 0	ccd 1	ccd 2	ccd 3	ccd 6	ccd 7
level 1 events	176411	176595	175864	180759	185666	192315	grade 0 events	64803	63450	64151	66282	64967	31864
rejected events	57454	56843	58605	60409	62314	50756		36%	35%	36%	36%	34%	16%
rejected %	32%	32%	33%	33%	33%	26%	grade 1 events	470	355	463	516	384	165
								0%	0%	0%	0%	0%	0%
							grade 2 events	20769	22236	20096	20618	21891	31010
								11%	12%	11%	11%	11%	16%
							grade 3 events	7481	7597	7869	7918	7637	13430
								4%	4%	4%	4%	4%	6%
							grade 4 events	7740	7711	7693	7944	7660	13138
								4%	4%	4%	4%	4%	6%
							grade 5 events	3242	3238	3041	3465	3426	8230
								1%	1%	1%	1%	1%	4%
							grade 6 events	18789	19367	18051	18207	21822	52834
								10%	10%	10%	10%	11%	27%
							grade 7 events	53117	52641	54500	55809	57879	41644
								30%	29%	30%	30%	31%	21%

2.2 Compared Parameters

Parameter	Planned	Actual
Instrument	ACIS	ACIS
Detector	ACIS-012367	ACIS-012367
Grating	NONE	NONE
Data mode	FAINT	FAINT
Observation mode	SECONDARY	SECONDARY
[deg] Pointing RA	114.9976122457672	114.9975826796822
[deg] Pointing Dec	44.97152314659904	44.97140051156119
[deg] Pointing Roll	233.7613834822952	233.7614043777577
[mm] SIM focus pos	-0.68282252473119	-0.68282252473119
[mm] SIM defocus	0.8505140384245534	0.8505140384245534
[mm] SIM translation stage pos	250.4660330802	250.4660330802
[mm] SIM translation stage offset	-0.01005726120527584	-0.01005726120527584
[s] Observation start time (MET)	288082704.298869	288082704.298869
Observation start date	2007-02-17T07:48:00	2007-02-17T06:58:24
[s] Observation end time (MET)	288090923.03155	288090923.03155
Observation end date	2007-02-17T09:13:00	2007-02-17T09:15:23
Read mode	TIMED	TIMED

Parameter	Planned	Actual
Obspar format version number	7	7
Obspar file type	PREDICTED	ACTUAL
Obspar update status	OVERRIDE	OVERRIDE
Number of optional ACIS chips dropped	0	0
On-chip summing requested	N	N
Subarray requested	NONE	NONE
Alternating exposures requested	N	N
[s] Primary exposure time	3.2	3.2

2.3 Star Slots

2.4 FID Slots

A Summary

A.1 Status

V&V Scientist	Beth Sundheim
V&V Date (YYYY-MM-DD)	2012.04.22
V&V Edition	1
V&V Disposition and Status	OK
V&V Charge Time	6.4666922738552

A.2 Comments