

V&V Reference Report

L2 ASCDS Version : 8.4.4

Observation 58428 - L2 Version 2
Chandra X-Ray Center

L2 Processing Date : Apr 23 2012

Contents

1	Front	2
2	OBI	3
2.1	OBI	3
2.1.1	Images	3
2.1.2	Bias	3
2.1.3	Parameters	4
2.1.4	Events	4
2.2	Compared Parameters	5
2.3	Star Slots	6
2.4	FID Slots	6
A	Summary	7
A.1	Status	7
A.2	Comments	7

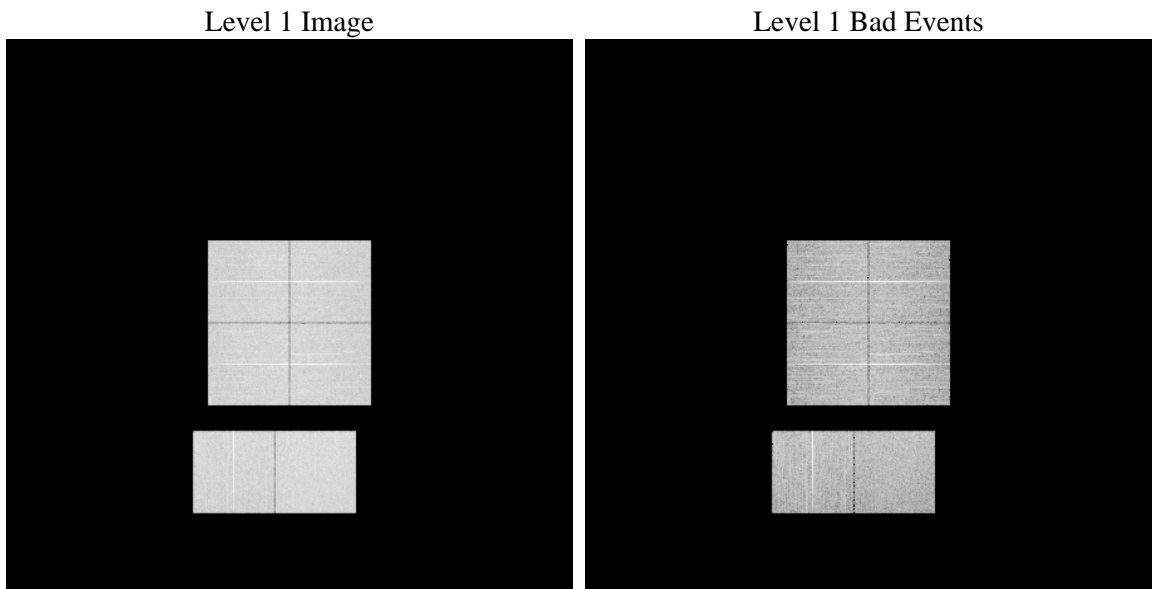
1 Front

seq_num	 	Sequence number
obs_id	58428	Observation id
title	ACIS-012367 diagnostics	Proposal title
observer	CHANDRA engineering request/realtime commanding	Principal investig
object	 	Source name
dtycle	0	
cycle	P	events from which exps? Prim/Second/Both
ra_targ	0.0	Observer's specified target RA [deg]
dec_targ	0.0	Observer's specified target Dec [deg]
ra_nom	236.97050986197	Nominal RA [deg]
dec_nom	19.006908386863	Nominal Dec [deg]
roll_nom	133.19177945651	Nominal Roll [deg]
revision	2	Processing version of data
ontime	8271.999969244	Sum of GTIs [s]
livetime	8167.254924833	Livetime [s]
ontime0	8271.999969244	Sum of GTIs [s]
ontime1	8271.999969244	Sum of GTIs [s]
ontime2	8271.999969244	Sum of GTIs [s]
ontime3	8271.999969244	Sum of GTIs [s]
ontime6	8271.999969244	Sum of GTIs [s]
ontime7	8271.999969244	Sum of GTIs [s]
l2events	754404	Number of level 2 events

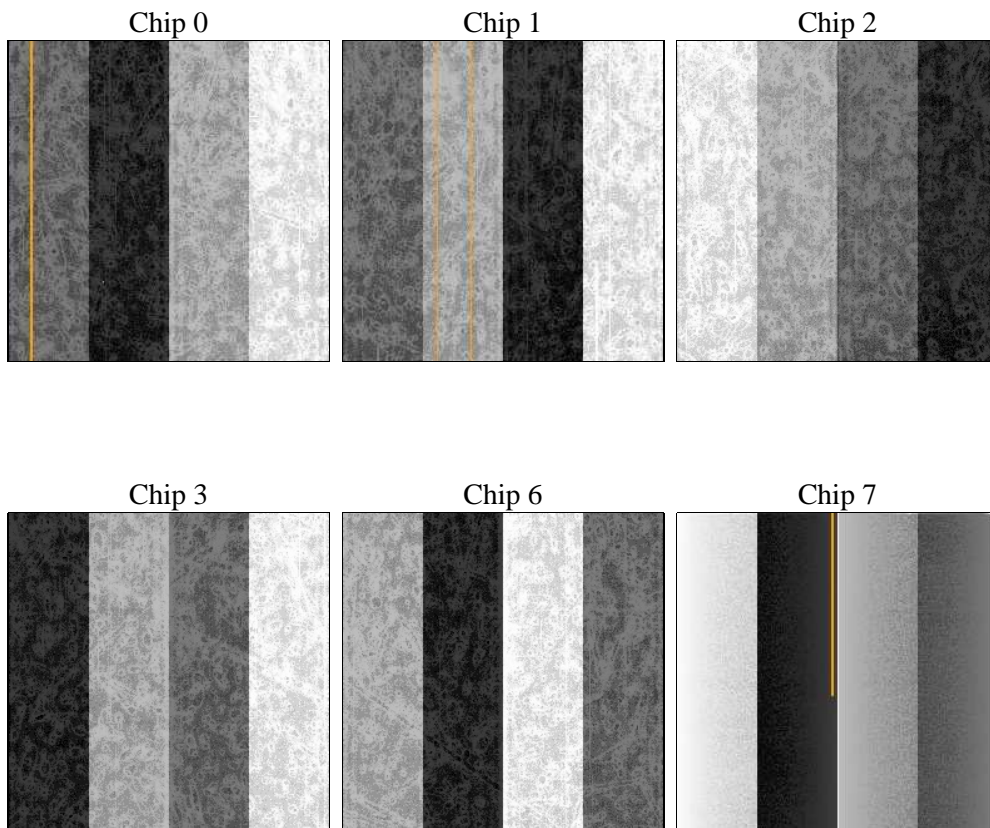
2 OBI

2.1 OBI

2.1.1 Images



2.1.2 Bias



2.1.3 Parameters

obi_num	0	Obi number	sched_exp_time	0.0	[s] Scheduled observation exposure time
ascdsver	8.4.4	Processing system revision	ontime	8271.999969244	Sum of GTIs [s]
caldsver	4.4.9	 	ontime0	8271.999969244	Sum of GTIs [s]
date	2012-04-23T11:46:16	Date and time of file creation	ontime1	8271.999969244	Sum of GTIs [s]
revision	2	Processing version of data	ontime2	8271.999969244	Sum of GTIs [s]
			ontime3	8271.999969244	Sum of GTIs [s]
			ontime6	8271.999969244	Sum of GTIs [s]
			ontime7	8271.999969244	Sum of GTIs [s]
			l1events	1225152	Number of level 1 events

2.1.4 Events

	ccd 0	ccd 1	ccd 2	ccd 3	ccd 6	ccd 7		ccd 0	ccd 1	ccd 2	ccd 3	ccd 6	ccd 7
level 1 events	197572	194161	202961	200350	205596	224512	grade 0 events	67898	67697	69493	70173	70317	33712
rejected events	71940	68384	76792	73554	74427	64576		34%	34%	34%	35%	34%	15%
rejected %	36%	35%	37%	36%	36%	28%	grade 1 events	484	430	553	513	440	155
								0%	0%	0%	0%	0%	0%
							grade 2 events	22483	22857	21444	21654	22978	34802
								11%	11%	10%	10%	11%	15%
							grade 3 events	8347	8232	8503	8497	8289	15570
								4%	4%	4%	4%	4%	6%
							grade 4 events	8278	8105	8349	8390	8365	15237
								4%	4%	4%	4%	4%	6%
							grade 5 events	3890	4057	3749	4426	4408	10919
								1%	2%	1%	2%	2%	4%
							grade 6 events	18669	18955	18430	18118	21271	60679
								9%	9%	9%	9%	10%	27%
							grade 7 events	67523	63828	72440	68579	69528	53438
								34%	32%	35%	34%	33%	23%

2.2 Compared Parameters

Parameter	Planned	Actual	Parameter	Planned	Actual
Instrument	ACIS	ACIS	Obspar format version number	7	7
Detector	ACIS-012367	ACIS-012367	Obspar file type	PREDICTED	ACTUAL
Grating	NONE	NONE	Obspar update status	NONE	UPDATED
Data mode	FAINT	FAINT	On-chip summing requested	N	N
Observation mode	SECONDARY	SECONDARY	Subarray requested	NONE	NONE
[deg] Pointing RA	0	236.970509861966	Alternating exposures requested	N	N
[deg] Pointing Dec	0	19.00690838686338	[s] Primary exposure time	3.2	3.2
[deg] Pointing Roll	0.0	133.1917794565134			
[mm] SIM focus pos	-0.782348	-0.7809083437167272			
[mm] SIM defocus	0	0.7524282956875696			
[mm] SIM translation stage pos	-233.592463	250.4635187648994			
[mm] SIM translation stage offset	0	-0.007540371344731511			
[s] Observation start time (MET)	293378410.100885	293378409.07589			
Observation start date	2007-04-19T14:00:10	2007-04-19T14:00:09			
[s] Observation end time (MET)	293400373.801932	293400372.77694			
Observation end date	2007-04-19T20:06:14	2007-04-19T20:06:12			
Read mode	TIMED	TIMED			

2.3 Star Slots

2.4 FID Slots

A Summary

A.1 Status

V&V Scientist	Jen Lauer
V&V Date (YYYY-MM-DD)	2012.04.24
V&V Edition	1
V&V Disposition and Status	OK
V&V Charge Time	8.271999969244

A.2 Comments