

V&V Reference Report

L2 ASCDS Version : 8.4.4

Observation 57878 - L2 Version 2
Chandra X-Ray Center

L2 Processing Date : May 12 2012

Contents

1	Front	2
2	OBI	3
2.1	OBI	3
2.1.1	Images	3
2.1.2	Bias	3
2.1.3	Parameters	4
2.1.4	Events	4
2.2	Compared Parameters	5
2.3	Star Slots	6
2.4	FID Slots	6
A	Summary	7
A.1	Status	7
A.2	Comments	7

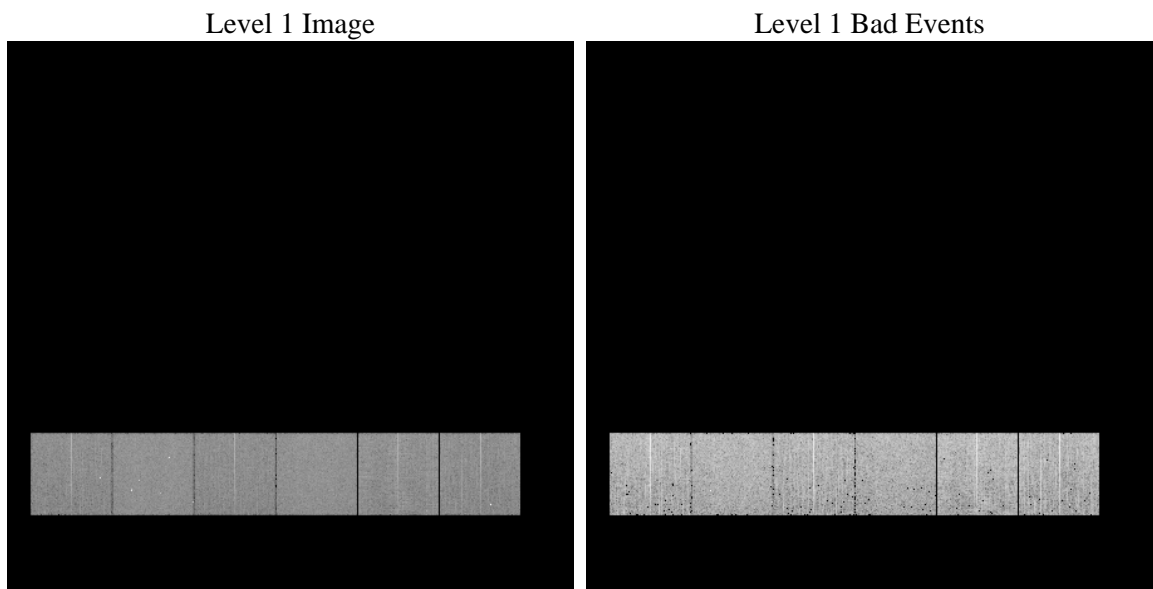
1 Front

seq_num	 	Sequence number
obs_id	57878	Observation id
title	ACIS-456789 diagnostics	Proposal title
observer	CHANDRA engineering request/realtime commanding	Principal investig
object	 	Source name
dtcycle	0	
cycle	P	events from which exps? Prim/Second/Both
ra_targ	0.0	Observer's specified target RA [deg]
dec_targ	0.0	Observer's specified target Dec [deg]
ra_nom	225.48770486919	Nominal RA [deg]
dec_nom	-11.974538276819	Nominal Dec [deg]
roll_nom	83.875750118882	Nominal Roll [deg]
revision	2	Processing version of data
ontime	4150.2738230228	Sum of GTIs [s]
livetime	4097.7205568809	Livetime [s]
ontime4	4150.1507030129	Sum of GTIs [s]
ontime5	4150.2327830195	Sum of GTIs [s]
ontime6	4150.1917430162	Sum of GTIs [s]
ontime7	4150.2738230228	Sum of GTIs [s]
ontime8	4150.1096630096	Sum of GTIs [s]
ontime9	4150.3148630261	Sum of GTIs [s]
l2events	319713	Number of level 2 events

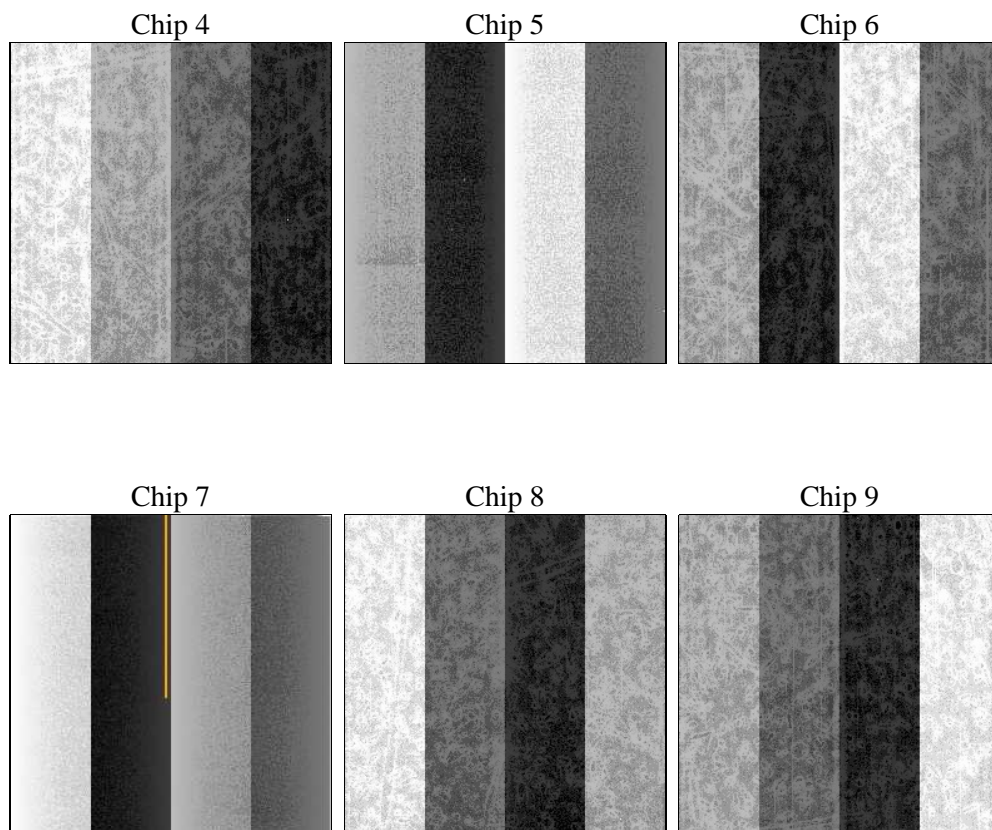
2 OBI

2.1 OBI

2.1.1 Images



2.1.2 Bias



2.1.3 Parameters

obi_num	0	Obi number	sched_exp_time	0.0	[s] Scheduled observation exposure time
ascdsver	8.4.4	Processing system revision	ontime	4150.2738230228	Sum of GTIs [s]
caldbver	4.4.9	 	ontime4	4150.1507030129	Sum of GTIs [s]
date	2012-05-12T16:23:29	Date and time of file creation	ontime5	4150.2327830195	Sum of GTIs [s]
revision	2	Processing version of data	ontime6	4150.1917430162	Sum of GTIs [s]
			ontime7	4150.2738230228	Sum of GTIs [s]
			ontime8	4150.1096630096	Sum of GTIs [s]
			ontime9	4150.3148630261	Sum of GTIs [s]
			l1events	562467	Number of level 1 events

2.1.4 Events

	ccd 4	ccd 5	ccd 6	ccd 7	ccd 8	ccd 9		ccd 4	ccd 5	ccd 6	ccd 7	ccd 8	ccd 9
level 1 events	87020	101225	86942	99686	98319	89275	grade 0 events	28859	12151	27957	14026	29985	28584
rejected events	37033	34628	34655	31558	39761	37149		33%	12%	32%	14%	30%	32%
rejected %	42%	34%	39%	31%	40%	41%	grade 1 events	266	260	178	76	208	226
								0%	0%	0%	0%	0%	0%
							grade 2 events	7881	23301	9184	14927	10705	8898
								9%	23%	10%	14%	10%	9%
							grade 3 events	3447	3332	3382	6400	4163	3447
								3%	3%	3%	6%	4%	3%
							grade 4 events	3338	3328	3336	6557	3959	3333
								3%	3%	3%	6%	4%	3%
							grade 5 events	1991	4916	2116	5158	2708	2353
								2%	4%	2%	5%	2%	2%
							grade 6 events	6462	24485	8428	26218	9792	7864
								7%	24%	9%	26%	9%	8%
							grade 7 events	34776	29452	32361	26324	36799	34570
								39%	29%	37%	26%	37%	38%

2.2 Compared Parameters

Parameter	Planned	Actual	Parameter	Planned	Actual
Instrument	ACIS	ACIS	Obspar format version number	7	7
Detector	ACIS-456789	ACIS-456789	Obspar file type	PREDICTED	ACTUAL
Grating	NONE	NONE	Obspar update status	NONE	UPDATED
Data mode	FAINT	FAINT	On-chip summing requested	N	N
Observation mode	SECONDARY	SECONDARY	Subarray requested	NONE	NONE
[deg] Pointing RA	0	225.4877048691858	Alternating exposures requested	N	N
[deg] Pointing Dec	0	-11.97453827681944	[s] Primary exposure time	3.2	3.2
[deg] Pointing Roll	0.0	83.87575011888183			
[mm] SIM focus pos	-1.429586	-0.6828225247311905			
[mm] SIM defocus	0.1037507710433287	0.8505141146731063			
[mm] SIM translation stage pos	250.455976	250.466033080201			
[mm] SIM translation stage offset	0	-0.01005468664627074			
[s] Observation start time (MET)	324186602.885555	324186601.86057			
Observation start date	2008-04-10T03:50:03	2008-04-10T03:50:01			
[s] Observation end time (MET)	324203000.836353	324202999.81137			
Observation end date	2008-04-10T08:23:21	2008-04-10T08:23:19			
Read mode	TIMED	TIMED			

2.3 Star Slots

2.4 FID Slots

A Summary

A.1 Status

V&V Scientist	Jen Lauer
V&V Date (YYYY-MM-DD)	2012.05.15
V&V Edition	1
V&V Disposition and Status	OK
V&V Charge Time	4.1502738230228

A.2 Comments