

# V&V Reference Report

## L2 ASCDS Version : 7.6.7.1

Observation 5778 - L2 Version 002  
Chandra X-Ray Center

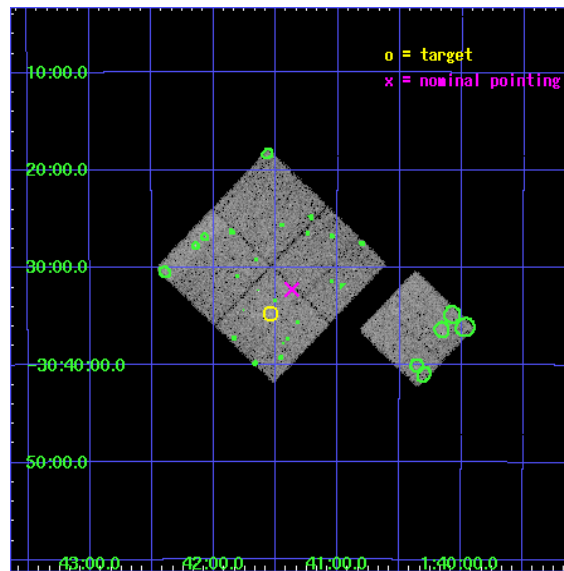
L2 Processing Date : Mar 8 2006

## Contents

<b>1</b>	<b>Front</b>	<b>2</b>
<b>2</b>	<b>OBI</b>	<b>3</b>
2.1	OBI . . . . .	3
2.1.1	Images . . . . .	3
2.1.2	Bias . . . . .	3
2.1.3	Parameters . . . . .	4
2.1.4	Events . . . . .	4
2.2	Compared Parameters . . . . .	5
2.3	Aspect . . . . .	6
2.4	Star Slots . . . . .	9
2.4.1	Slot 3 . . . . .	9
2.4.2	Slot 4 . . . . .	10
2.4.3	Slot 5 . . . . .	11
2.4.4	Slot 6 . . . . .	12
2.4.5	Slot 7 . . . . .	13
2.5	FID Slots . . . . .	14
2.5.1	Slot 0 . . . . .	14
2.5.2	Slot 1 . . . . .	15
2.5.3	Slot 2 . . . . .	16
<b>3</b>	<b>Point Sources</b>	<b>17</b>
<b>A</b>	<b>Summary</b>	<b>18</b>
A.1	Status . . . . .	18
A.2	Comments . . . . .	18

# 1 Front

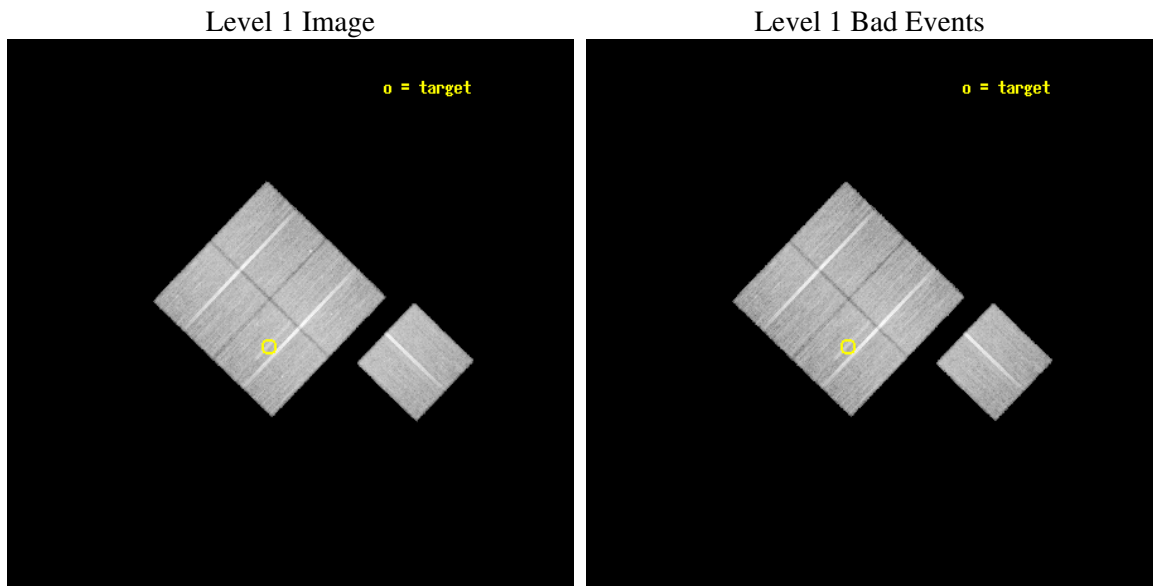
seq_num	800491
obs_id	5778
title	Chandra observations of high-redshift clusters of galaxies from the 400 Square Degrees ROSAT PSPC survey
observer	Dr. Steven Murray
object	cl0141-3034
dtcycle	0
cycle	P
ra_targ	25.384583
dec_targ	-30.578333
ra_nom	25.342631517167
dec_nom	-30.537835067547
roll_nom	133.82530357632
revision	2
ontime	30048.258971959
livetime	29655.656347284
ontime0	30051.399942219
ontime1	30048.258981973
ontime2	30045.117961884
ontime3	30048.258971959
ontime6	30045.117981821
l2events	83512



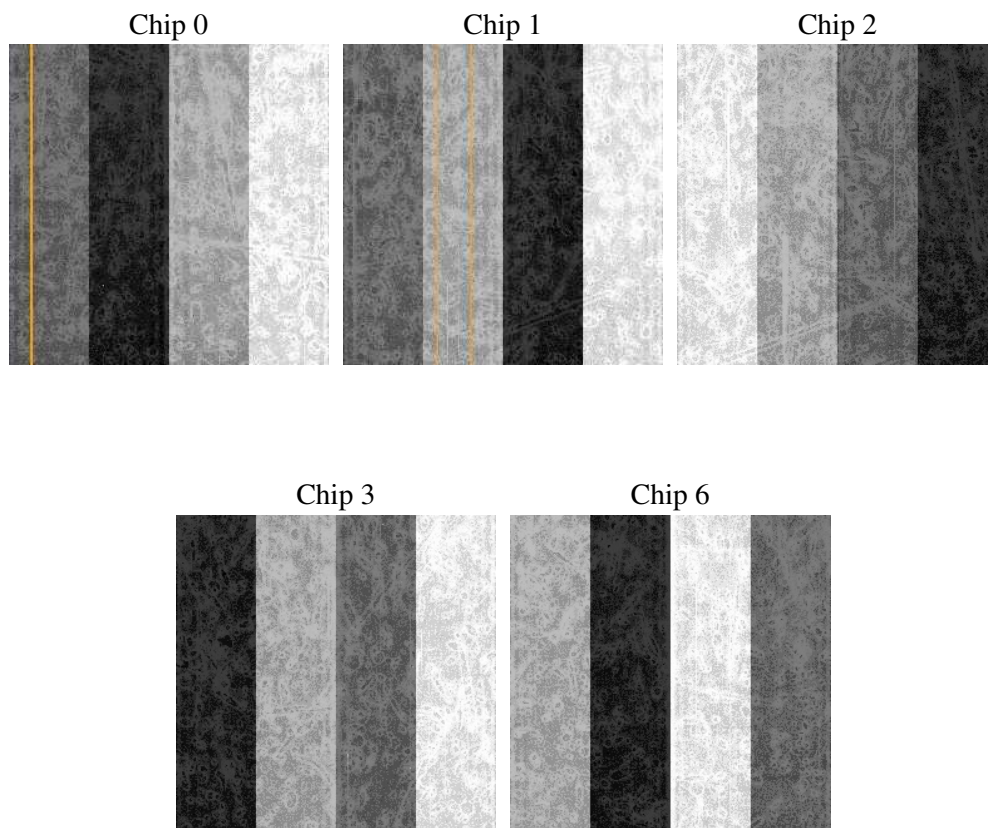
## 2 OBI

### 2.1 OBI

#### 2.1.1 Images



#### 2.1.2 Bias



### 2.1.3 Parameters

obi_num	0
ascdsver	7.6.7.1
caldbver	3.2.1
date	2006-03-08T22:02:27
revision	2

sched_exp_time	30000.000000
ontime	30053.123001516
ontime0	30056.264001667
ontime1	30053.123011529
ontime2	30049.98199144
ontime3	30053.123001516
ontime6	30049.98204127
l1events	956730

### 2.1.4 Events

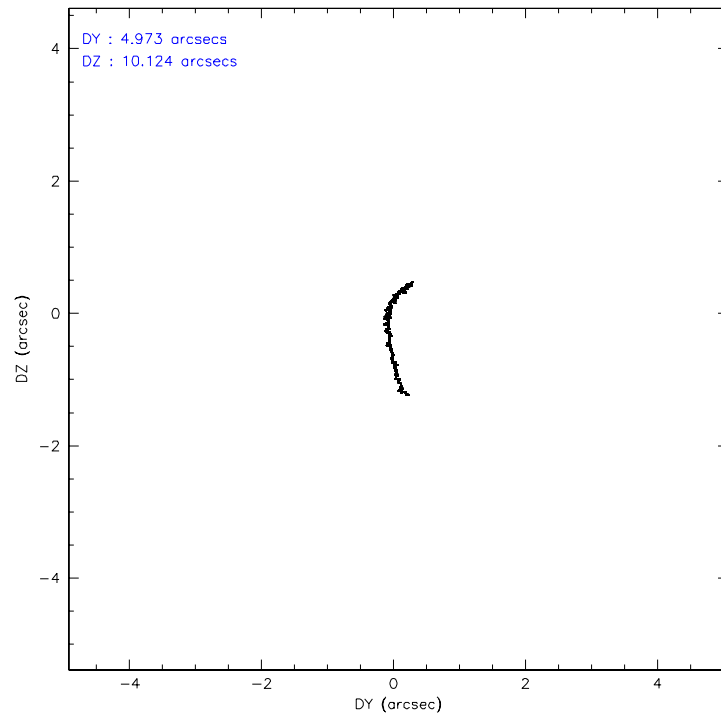
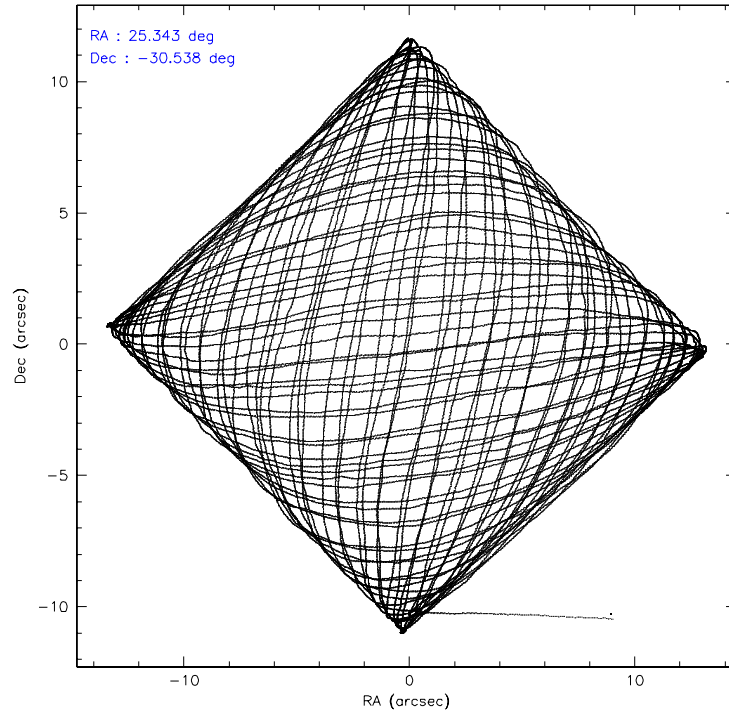
	ccd 0	ccd 1	ccd 2	ccd 3	ccd 6
level 1 events	181773	186278	203289	192881	192509
rejected events	162451	164610	184289	173389	172286
rejected %	89%	88%	90%	89%	89%

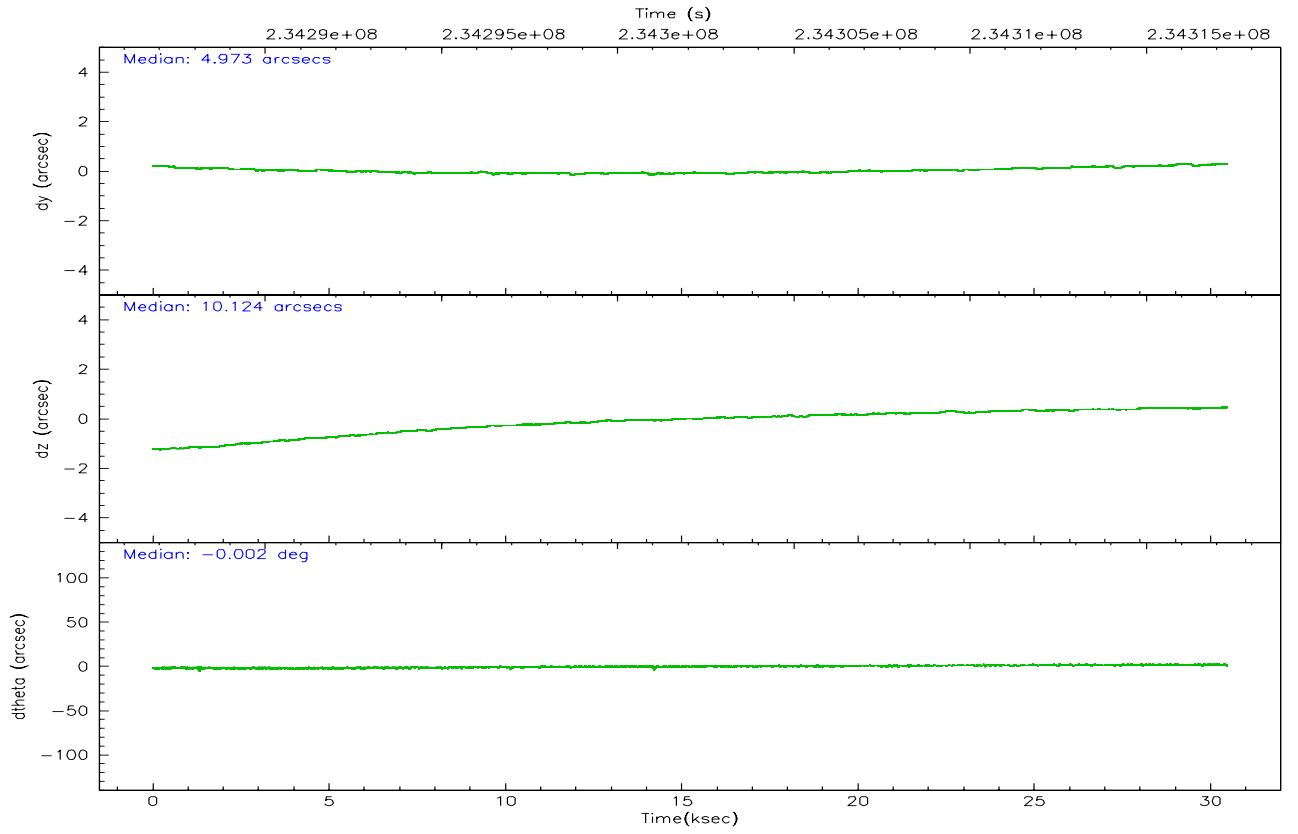
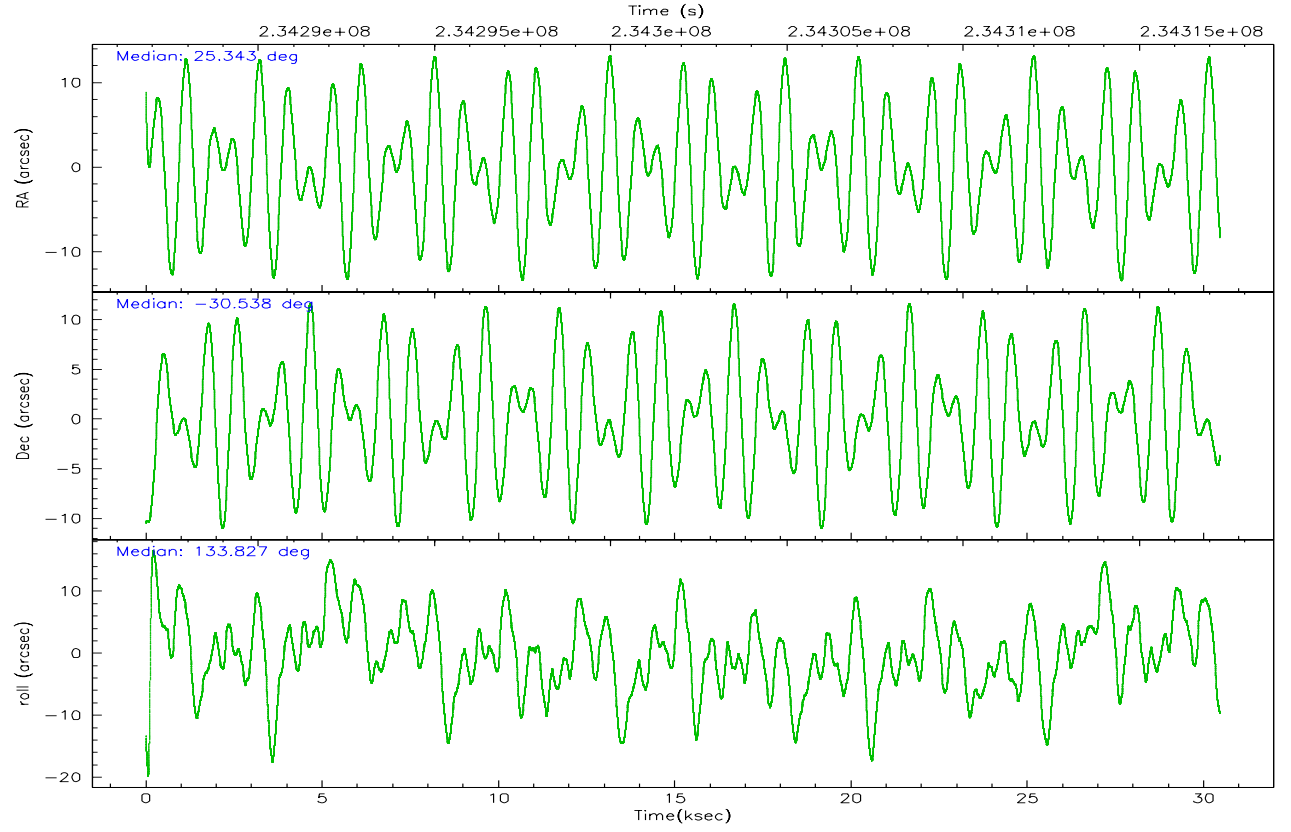
	ccd 0	ccd 1	ccd 2	ccd 3	ccd 6
grade 0 events	6849	8182	7021	7511	7469
	3%	4%	3%	3%	3%
grade 1 events	94	105	112	107	95
	0%	0%	0%	0%	0%
grade 2 events	4483	4554	4463	3988	4195
	2%	2%	2%	2%	2%
grade 3 events	2231	2334	2026	2112	2167
	1%	1%	0%	1%	1%
grade 4 events	2091	2402	1997	2187	2260
	1%	1%	0%	1%	1%
grade 5 events	7007	7454	6546	7882	7620
	3%	4%	3%	4%	3%
grade 6 events	3672	4199	3494	3695	4135
	2%	2%	1%	1%	2%
grade 7 events	155346	157048	177630	165399	164568
	85%	84%	87%	85%	85%

## 2.2 Compared Parameters

Parameter	Planned	Actual	Parameter	Planned	Actual
Instrument	ACIS	ACIS	Obspar format version number	6	6
Detector	ACIS-01236	ACIS-01236	Obspar file type	PREDICTED	ACTUAL
Grating	NONE	NONE	Obspar update status	NONE	UPDATED
Data mode	VFAINT	VFAINT	On-chip summing requested	N	N
Observation mode	POINTING	POINTING	Subarray requested	NONE	NONE
Pointing RA	25.373177	25.34263151716735	Alternating exposures requested	N	N
Pointing Dec	-30.545332	-30.53783506754682	Primary exposure time	0.000000	3.1
Pointing Roll	133.632151	133.8253035763153			
SIM focus pos (mm)	-0.782348	-0.7809083437167272			
SIM defocus (mm)	0	0.001439871863259334			
SIM translation stage pos (mm)	-225.840463	-225.8433433320239			
SIM translation stage offset (mm)	-7.752	-7.749109670905796			
Observation start time	234287289.184000	234286215.8805			
Observation start date	2005-06-04T15:47:05	2005-06-04T15:30:15			
Observation end time	234317289.184000	234317718.23193			
Observation end date	2005-06-05T00:07:05	2005-06-05T00:15:18			
Read mode	TIMED	TIMED			

## 2.3 Aspect





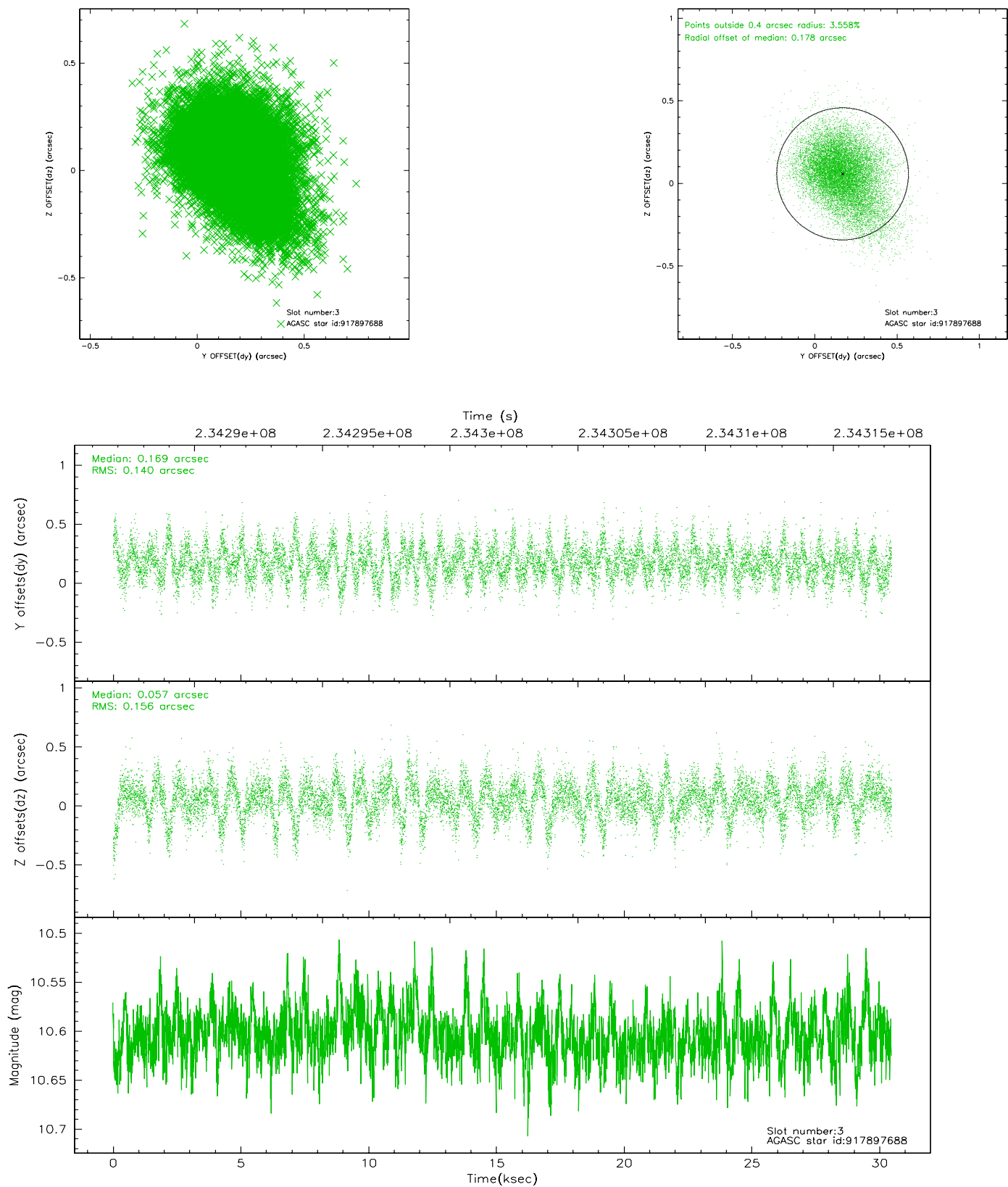
### Slot Statistics

slot	status	id	mag	n_pts	med_dy	med_dz	dr1	dr2	ra	dec	mean_y	mean_z
0	FID	ACIS-I-1	7.23	7431	0.084	-0.069	0.015	0.026	0.000000	0.000000	934.67	-992.61
1	FID	ACIS-I-5	7.22	7431	-0.242	0.072	0.010	0.017	0.000000	0.000000	-1813.71	904.98
2	FID	ACIS-I-6	7.25	7431	0.065	0.066	0.012	0.020	0.000000	0.000000	400.14	1549.55
3	GUIDE	917897688	10.60	14840	0.169	0.057	0.216	0.375	25.753534	-31.024920	-2060.20	343.54
4	BAD	917900624	11.63	13324	0.102	-0.604	0.397	0.701	25.497922	-30.175774	694.72	-1198.77
5	GUIDE	917902376	9.84	14843	-0.104	0.068	0.155	0.239	25.122165	-30.489033	683.71	424.31
6	GUIDE	917908384	10.33	14836	-0.266	0.102	0.163	0.260	24.381942	-30.609884	1941.53	2392.66
7	GUIDE	917898384	8.95	14857	0.110	0.327	0.118	0.193	25.987004	-30.727302	-1788.18	-918.77

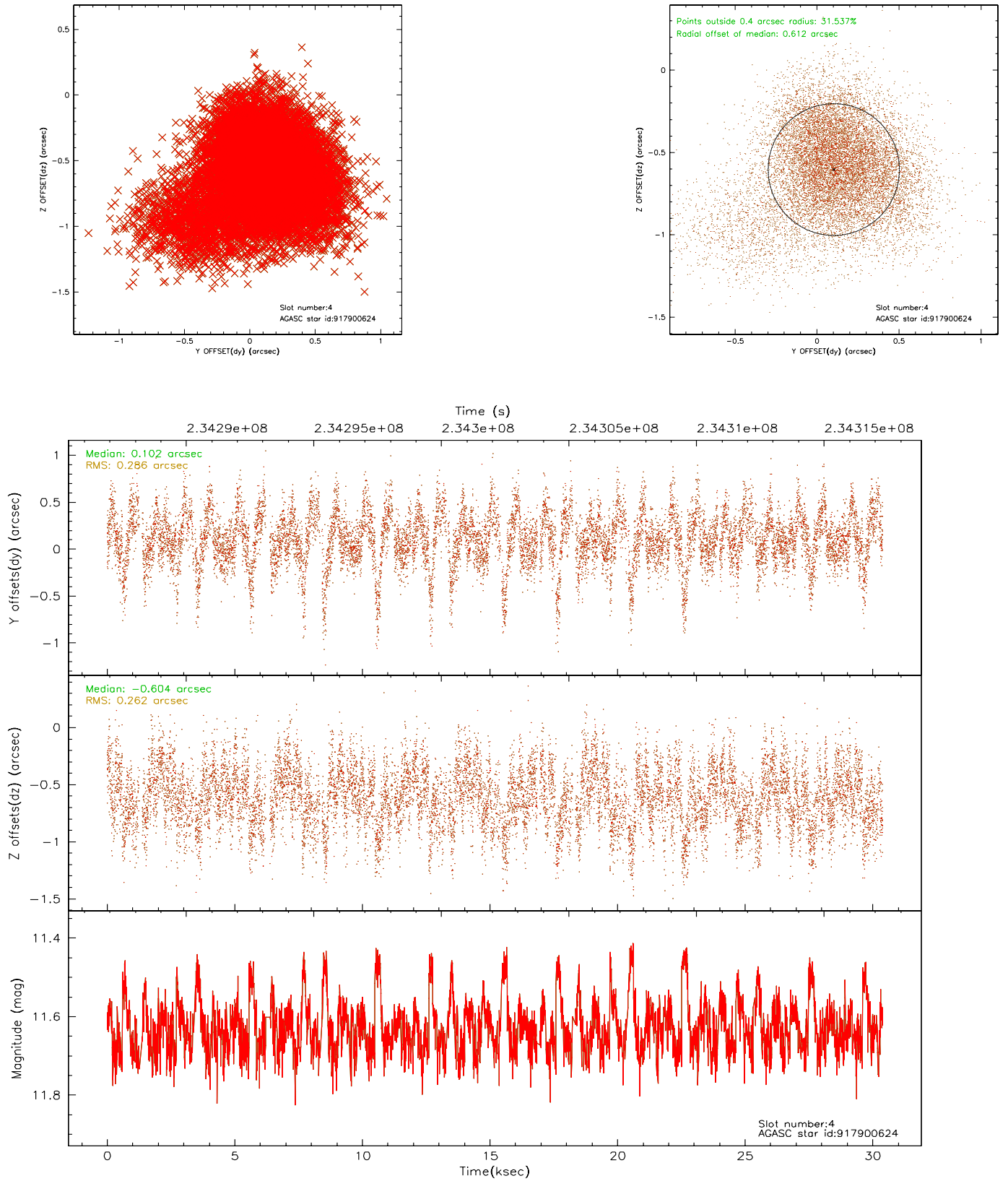


## 2.4 Star Slots

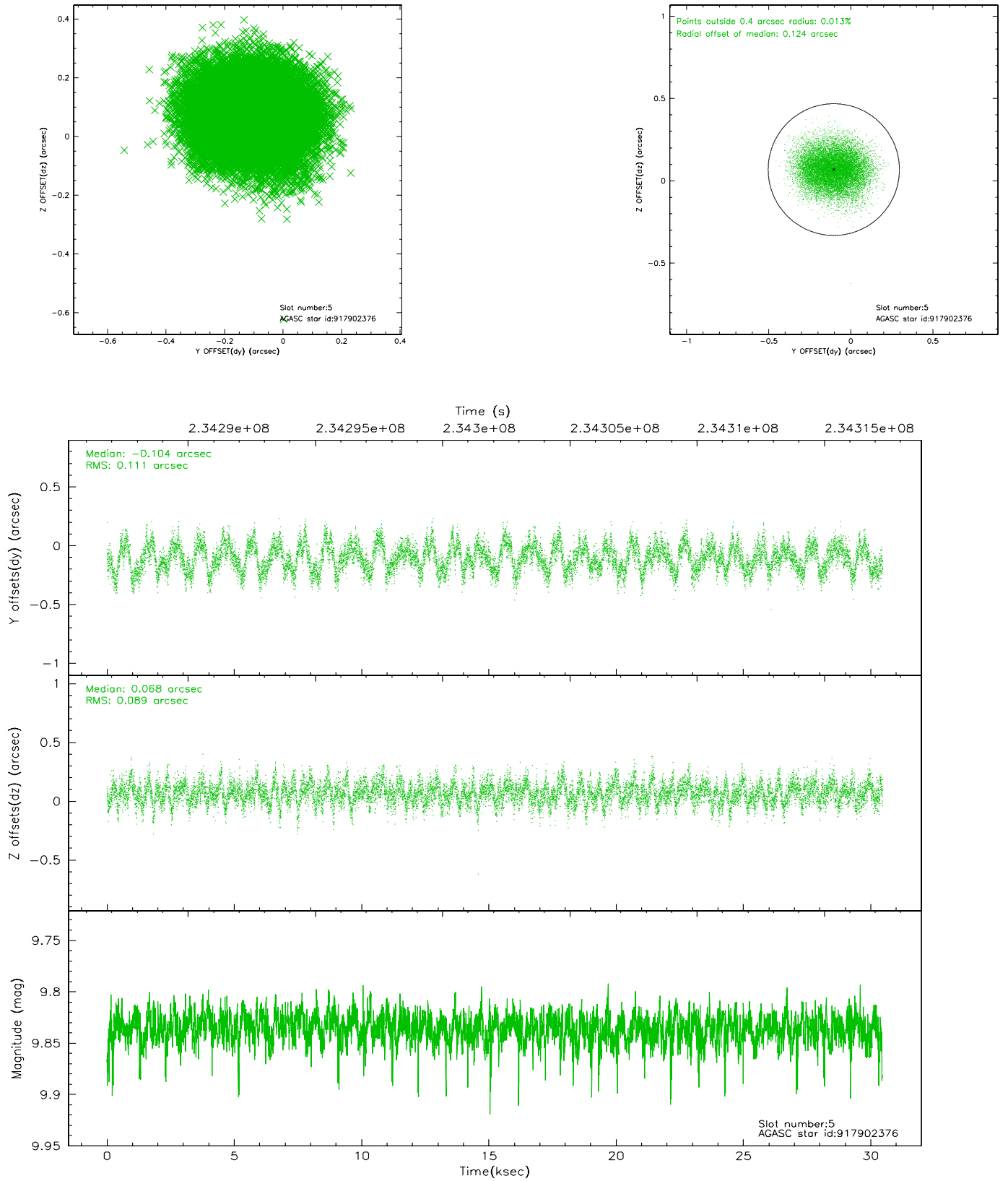
### 2.4.1 Slot 3



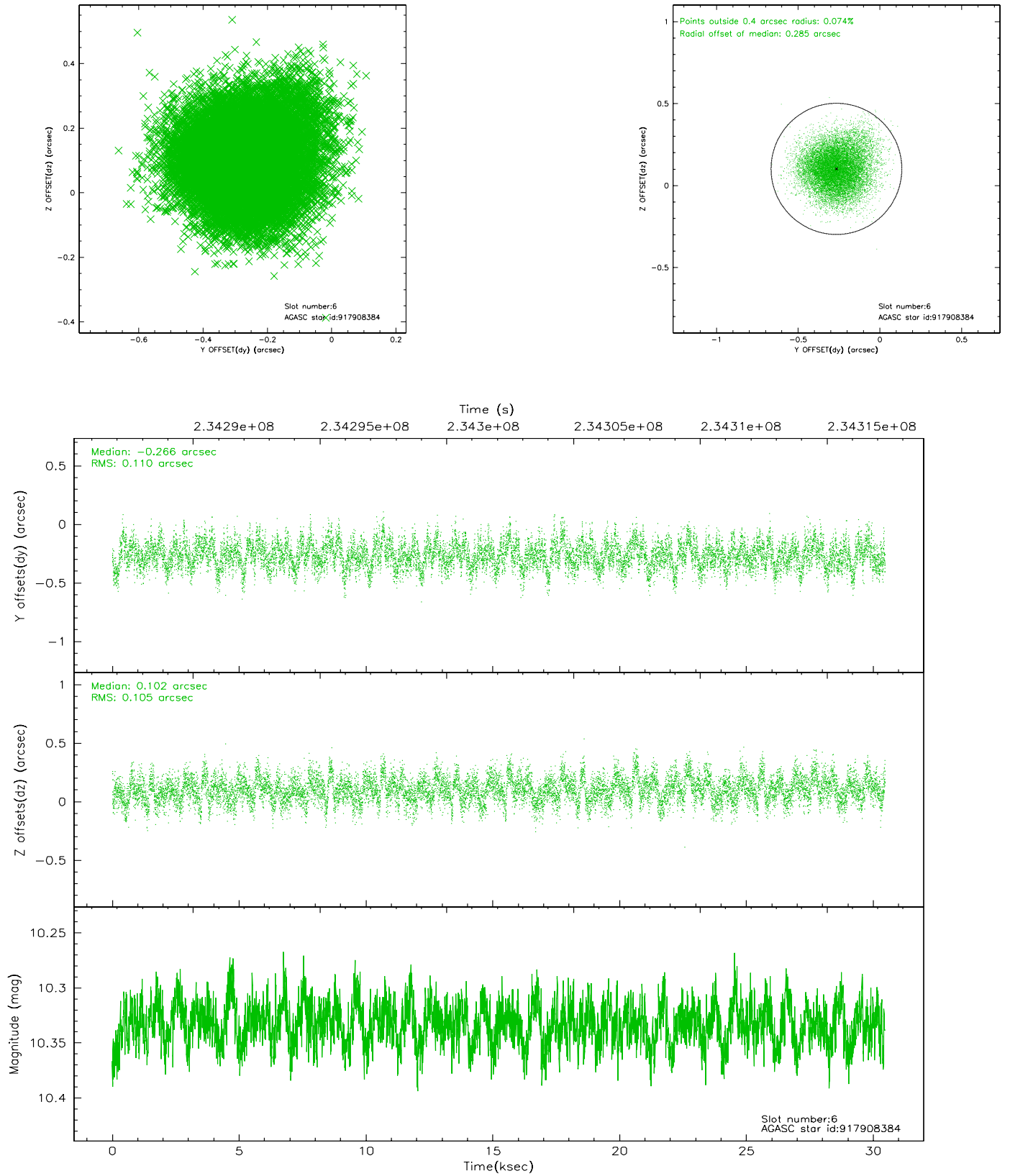
## 2.4.2 Slot 4



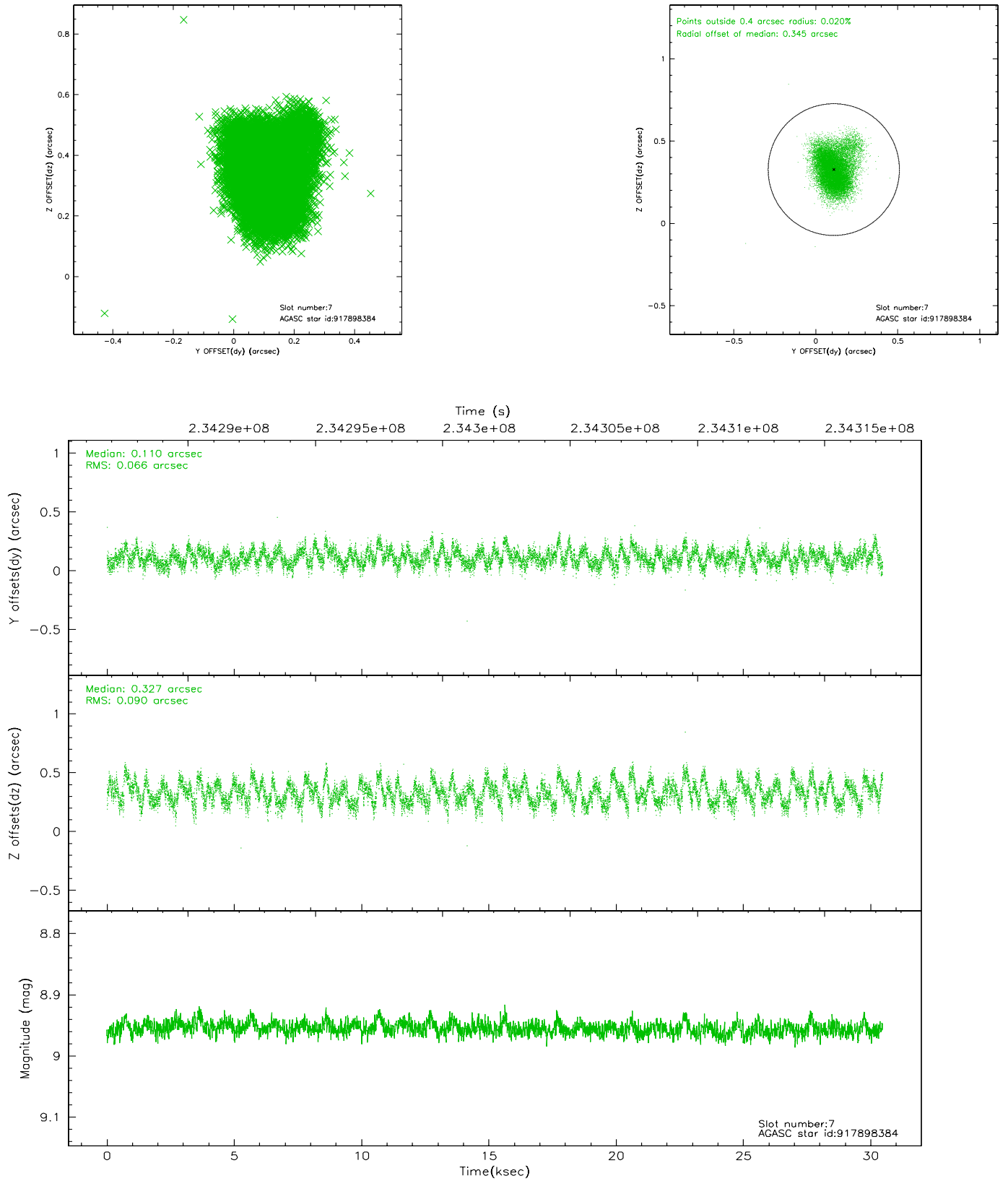
### 2.4.3 Slot 5



## 2.4.4 Slot 6

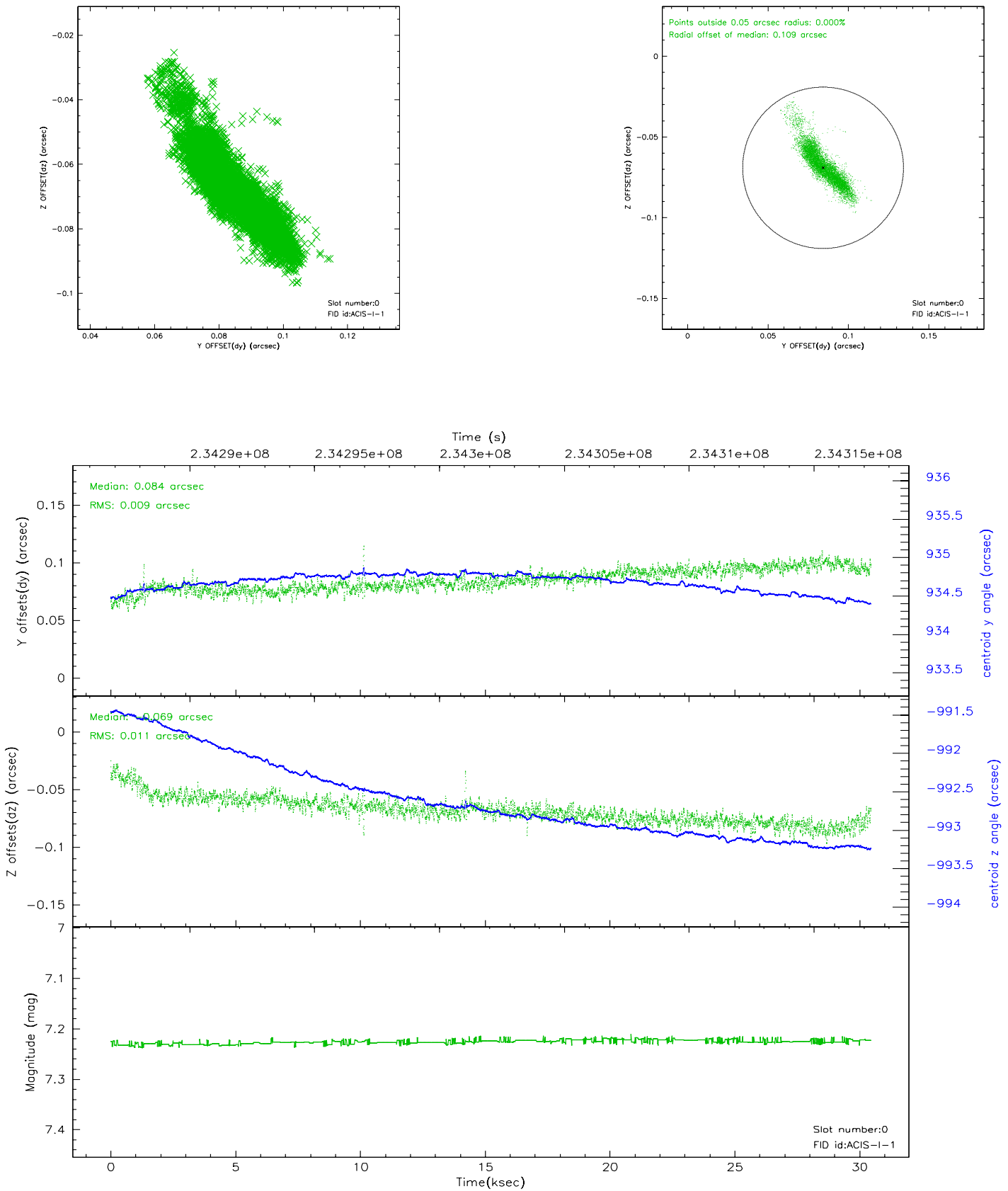


## 2.4.5 Slot 7

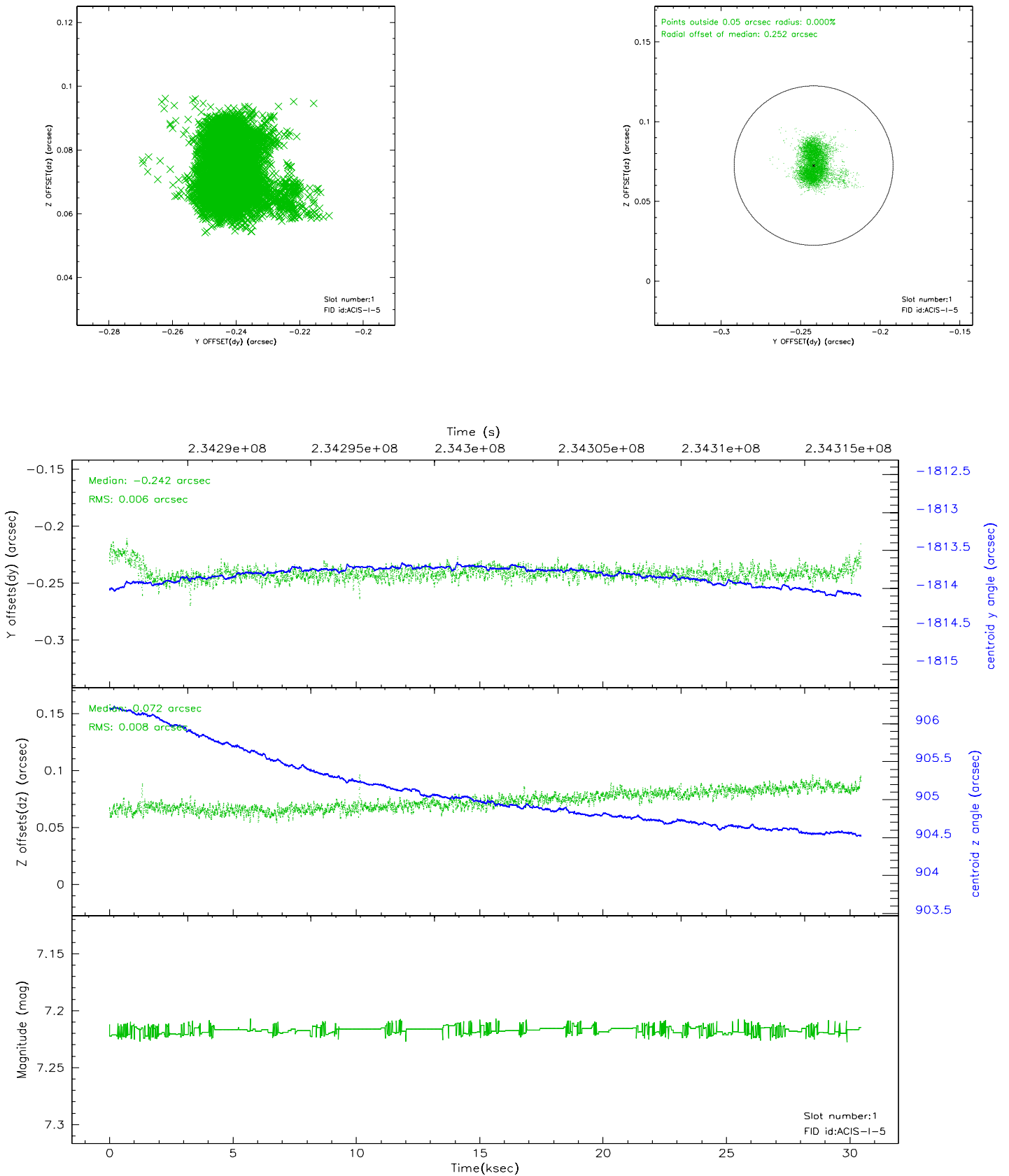


## 2.5 FID Slots

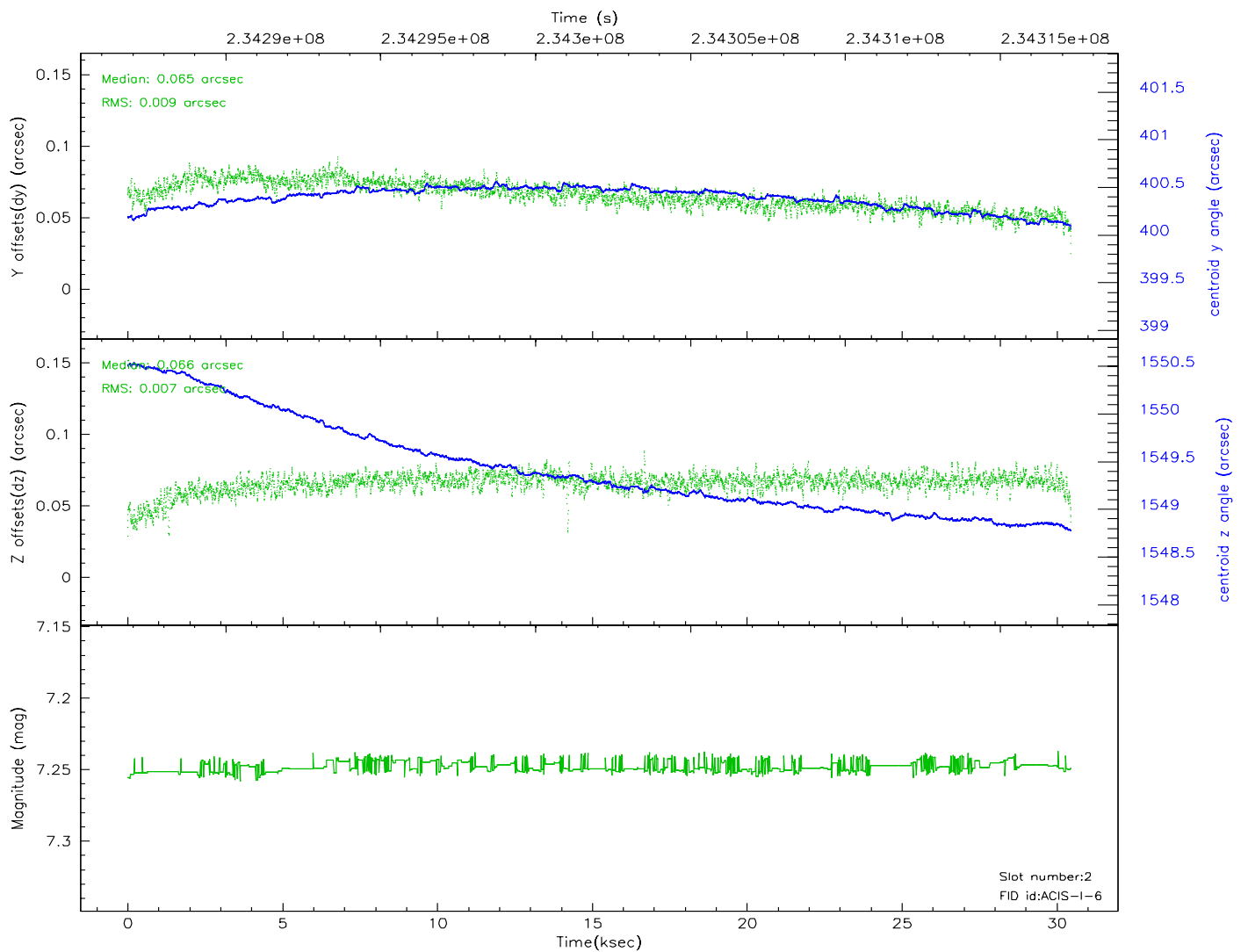
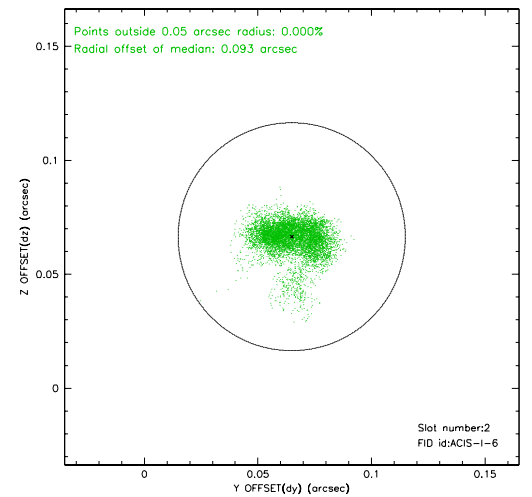
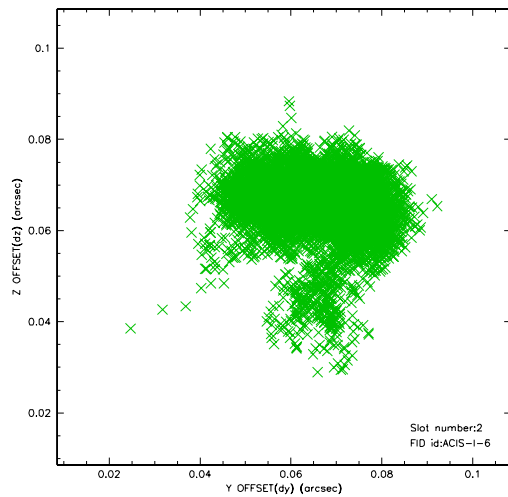
### 2.5.1 Slot 0



## 2.5.2 Slot 1

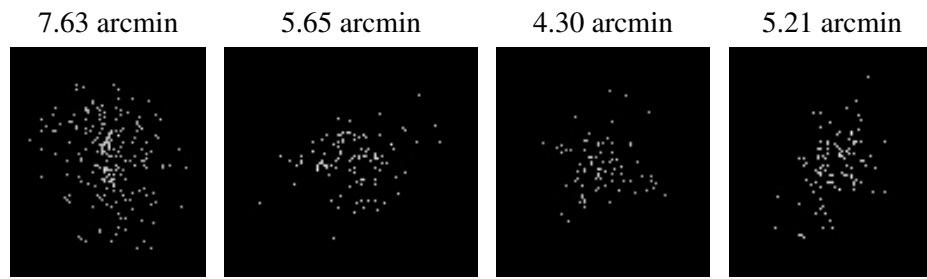


### 2.5.3 Slot 2





### 3 Point Sources



# A Summary

## A.1 Status

V&V Scientist	Jen Lauer
V&V Date (YYYY-MM-DD)	2006.03.09
V&V Edition	1
V&V Disposition and Status	OK
V&V Charge Time	30.04825

## A.2 Comments

Comments for Obi 0

Star in slot 4 has an RMS deviation > 0.200000 arcsec

Slot 4 was not used in the aspect solution.